

IAP Map

Archie Creek Fire
OR-UPF-000436

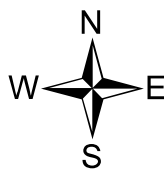
10/01/2020 0600 - 2000hrs

131,542 Acres

Map Page: 1

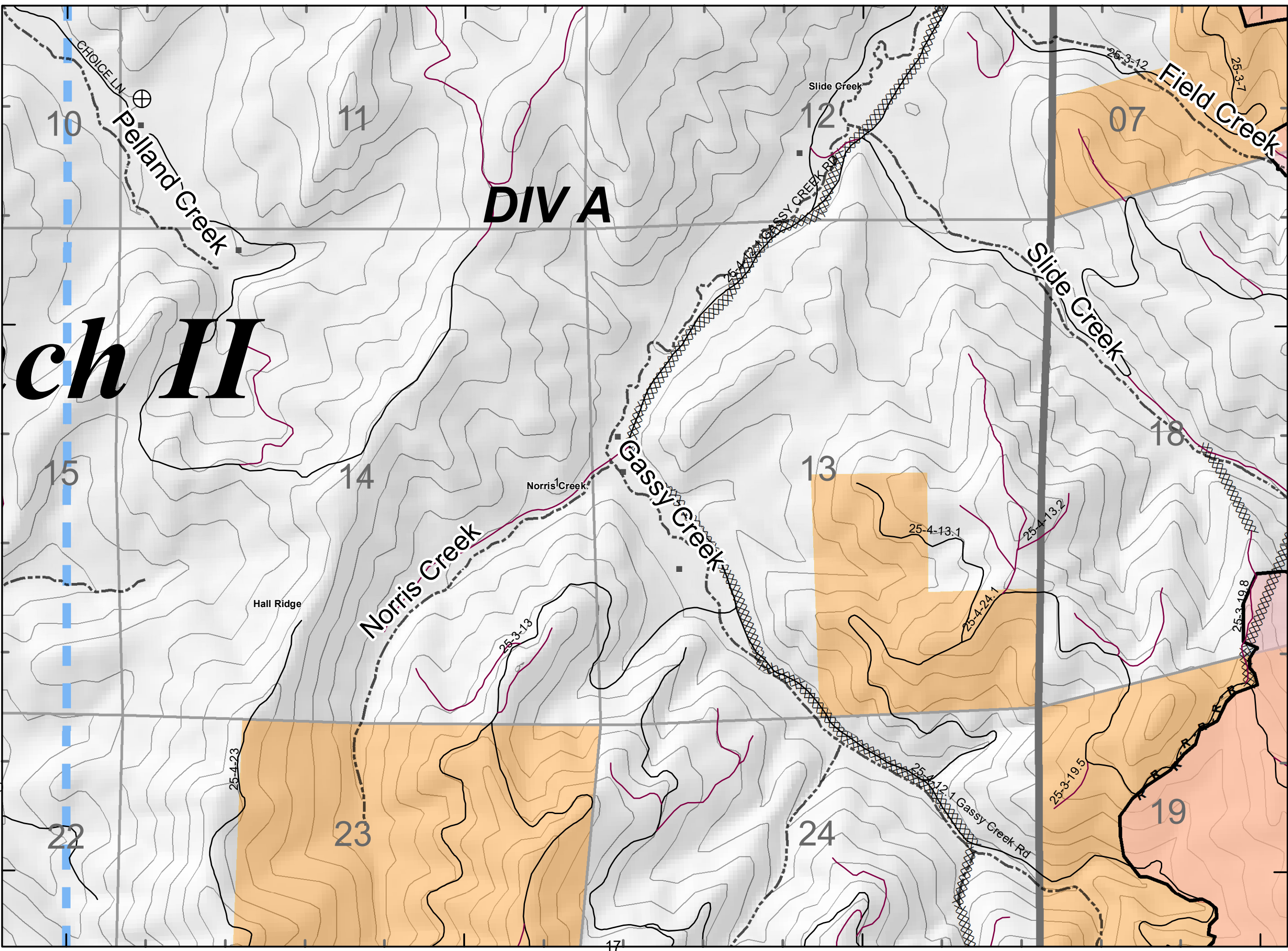
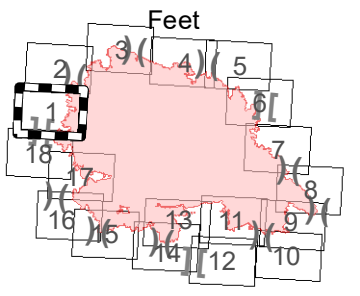
Div A

- ⊙ Camp
- × Closure
- ◆ Dip Site
- Drop Point
- 🚛 Dozer Push
- 🔥 Fire Origin
- 🌳 Hazard Tree
- 🚁 Helispot
- 📶 Internet Access
- 🏠 Lookout
- 🚚 Mobile Weather Unit
- 📡 Repeater
- ⚠️ Safety Zone
- 🔥 Spot Fire
- 📍 Staging Area
- 🌊 Water Source
- 🚰 Restricted Water Source
- ⊕ Water Development or Draft Site
- ⚠️ Value at Risk
- ⌘ Division Break
- ⌘ Branch Break
- 🔴 Uncontrolled Fire Edge
- 🟡 Contained Line
- ⌘ Completed Dozer Line
- H - Completed Hand Line
- R - Road as Completed Line
- 🛣️ Access or Improved Road
- 🚧 Completed Bumout
- ▬ Planned Fire Line
- Planned Secondary Line
- 🚫 Temporary Flight Restriction
- 🛠️ Road Repair
- 🚧 Management Action Point
- 🔴 Wildfire Daily Fire Perimeter



43°24'N

0 1,000 2,000



43°24'N

43°23'N

123°9'W

123°8'W

123°7'W

123°6'W

IAP Map

Archie Creek Fire
OR-UPF-000436

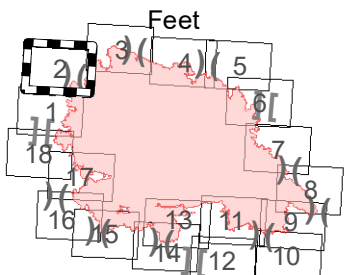
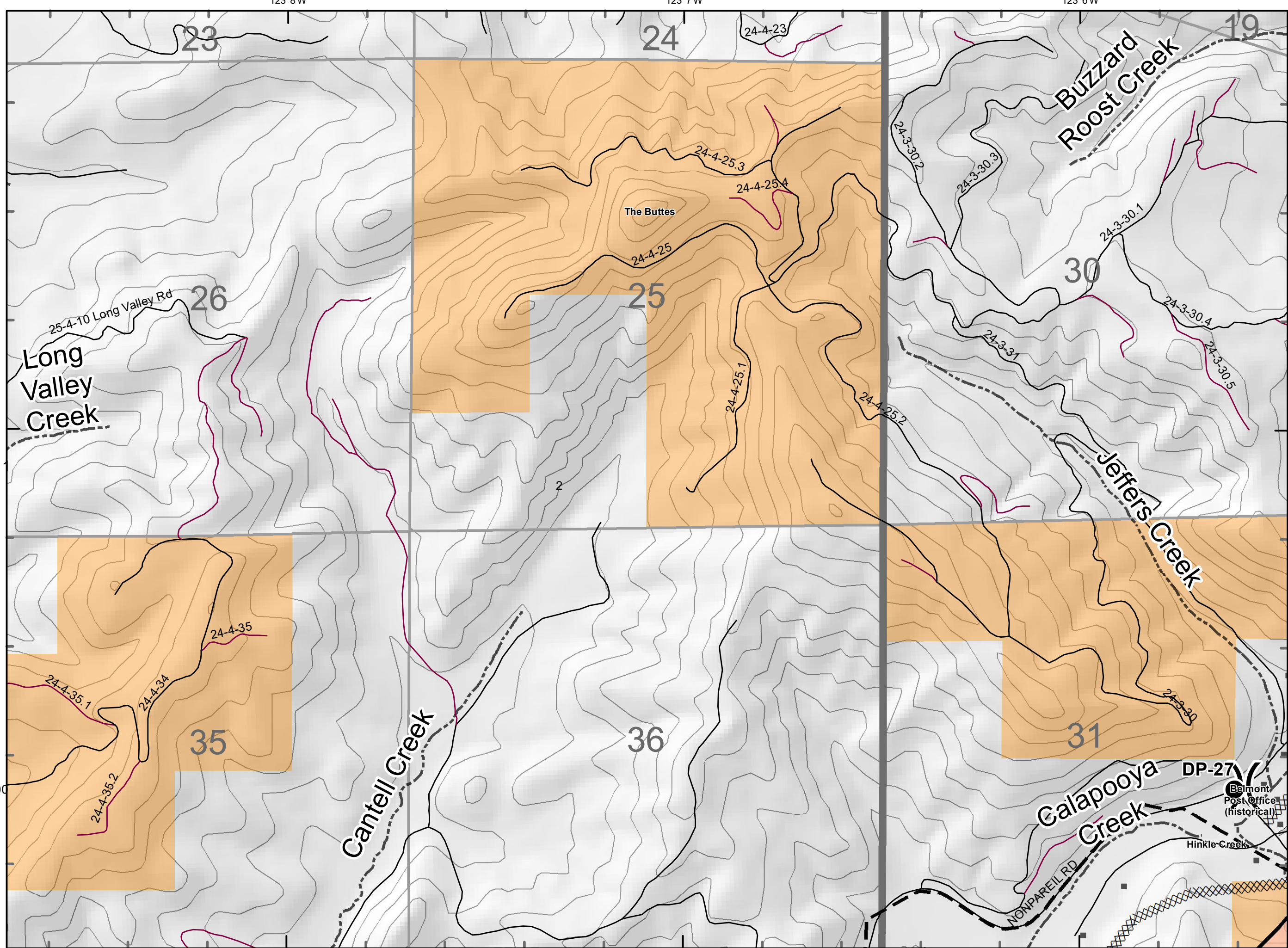
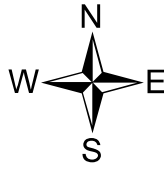
10/01/2020 0600 - 2000hrs

131,542 Acres

Map Page: 2

Div A, D

- ⊙ Camp
- × Closure
- ◆ Dip Site
- Drop Point
- 🚛 Dozer Push
- 🔥 Fire Origin
- 🌳 Hazard Tree
- 📍 Helispot
- 📶 Internet Access
- 🏠 Lookout
- 🚚 Mobile Weather Unit
- 📡 Repeater
- ⚠️ Safety Zone
- 🔥 Spot Fire
- 📍 Staging Area
- 🌊 Water Source
- 🌊 Restricted Water Source
- ⊕ Water Development or Draft Site
- 🏠 Value at Risk
- ⌘ Division Break
- ⌘ Branch Break
- 🔴 Uncontrolled Fire Edge
- 🟡 Contained Line
- ⌘ Completed Dozer Line
- H - Completed Hand Line
- R - Road as Completed Line
- 🛣️ Access or Improved Road
- 🚧 Completed Bumout
- ▬ Planned Fire Line
- Planned Secondary Line
- 🚫 Temporary Flight Restriction
- 🛠️ Road Repair
- 🚧 Management Action Point
- 🔴 Wildfire Daily Fire Perimeter



Index Map

123°8'W 123°7'W 123°6'W

IAP Map

Archie Creek Fire
OR-UPF-000436

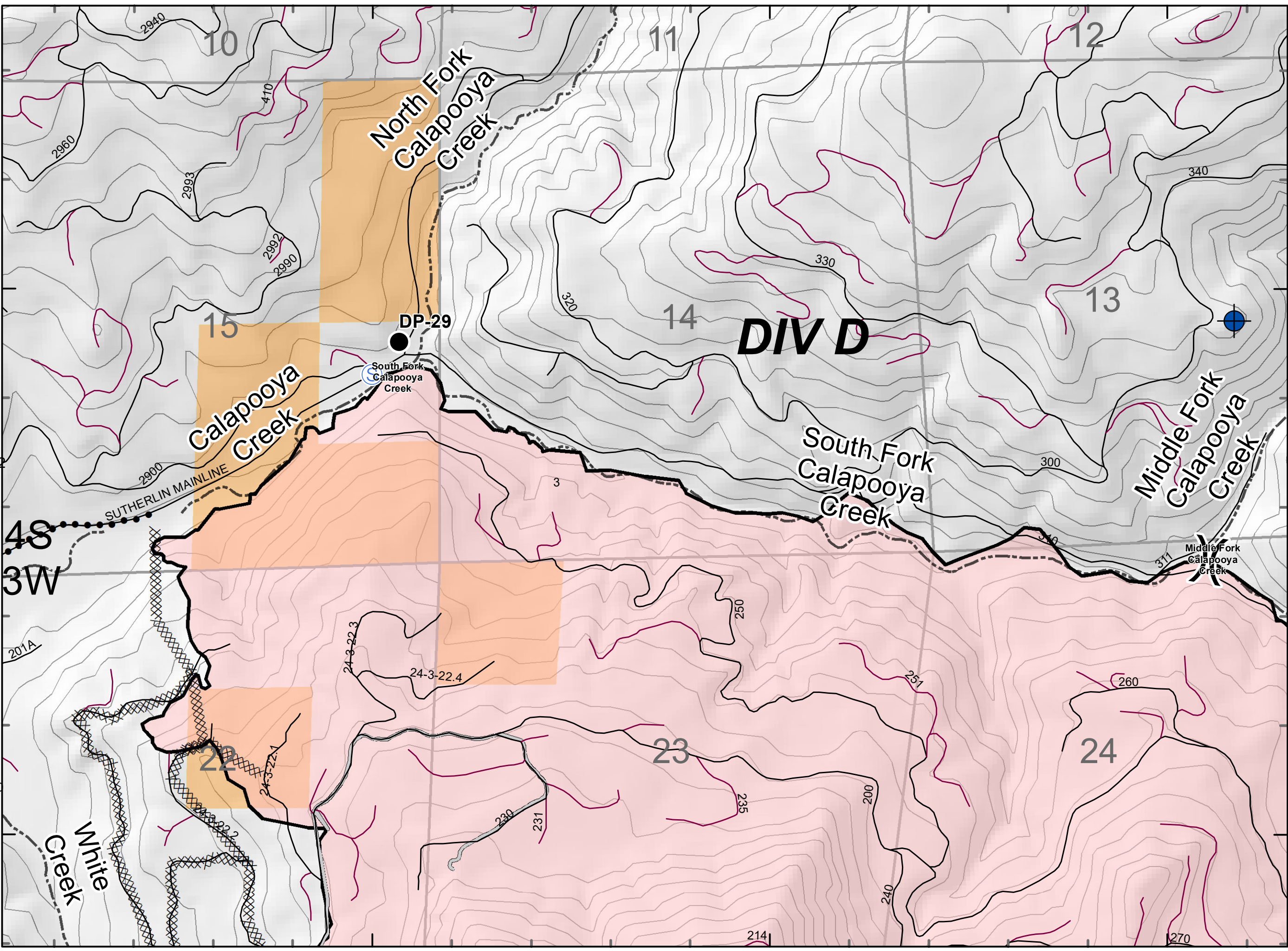
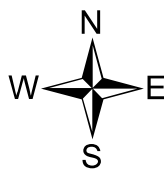
10/01/2020 0600 - 2000hrs

131,542 Acres

Map Page: 3

Div D, E

- Camp
- ✕ Closure
- ◆ Dip Site
- Drop Point
- 🚛 Dozer Push
- 🔥 Fire Origin
- 🌳 Hazard Tree
- 🚁 Helispot
- 📶 Internet Access
- 🏠 Lookout
- 🚚 Mobile Weather Unit
- 📡 Repeater
- ⚠️ Safety Zone
- 🔥 Spot Fire
- 📍 Staging Area
- 🌊 Water Source
- 🌊 Restricted Water Source
- ⚙️ Water Development or Draft Site
- 🏠 Value at Risk
- ✂️ Division Break
- ✂️ Branch Break
- 🔴 Uncontrolled Fire Edge
- 🟡 Contained Line
- 🚧 Completed Dozer Line
- 👤 Completed Hand Line
- 🛣️ Road as Completed Line
- 🛣️ Access or Improved Road
- 🚚 Completed Burnout
- 🚚 Planned Fire Line
- 🚚 Planned Secondary Line
- 🚚 Temporary Flight Restriction
- 🛣️ Road Repair
- 🚚 Management Action Point
- 🔴 Wildfire Daily Fire Perimeter



48
3W

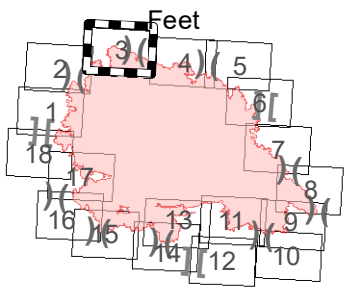
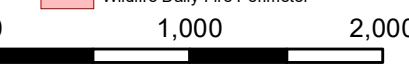
DIV D

201A

22

23

24



Index Map

IAP Map

Archie Creek Fire
OR-UPF-000436

10/01/2020 0600 - 2000hrs

131,542 Acres

Map Page: 4

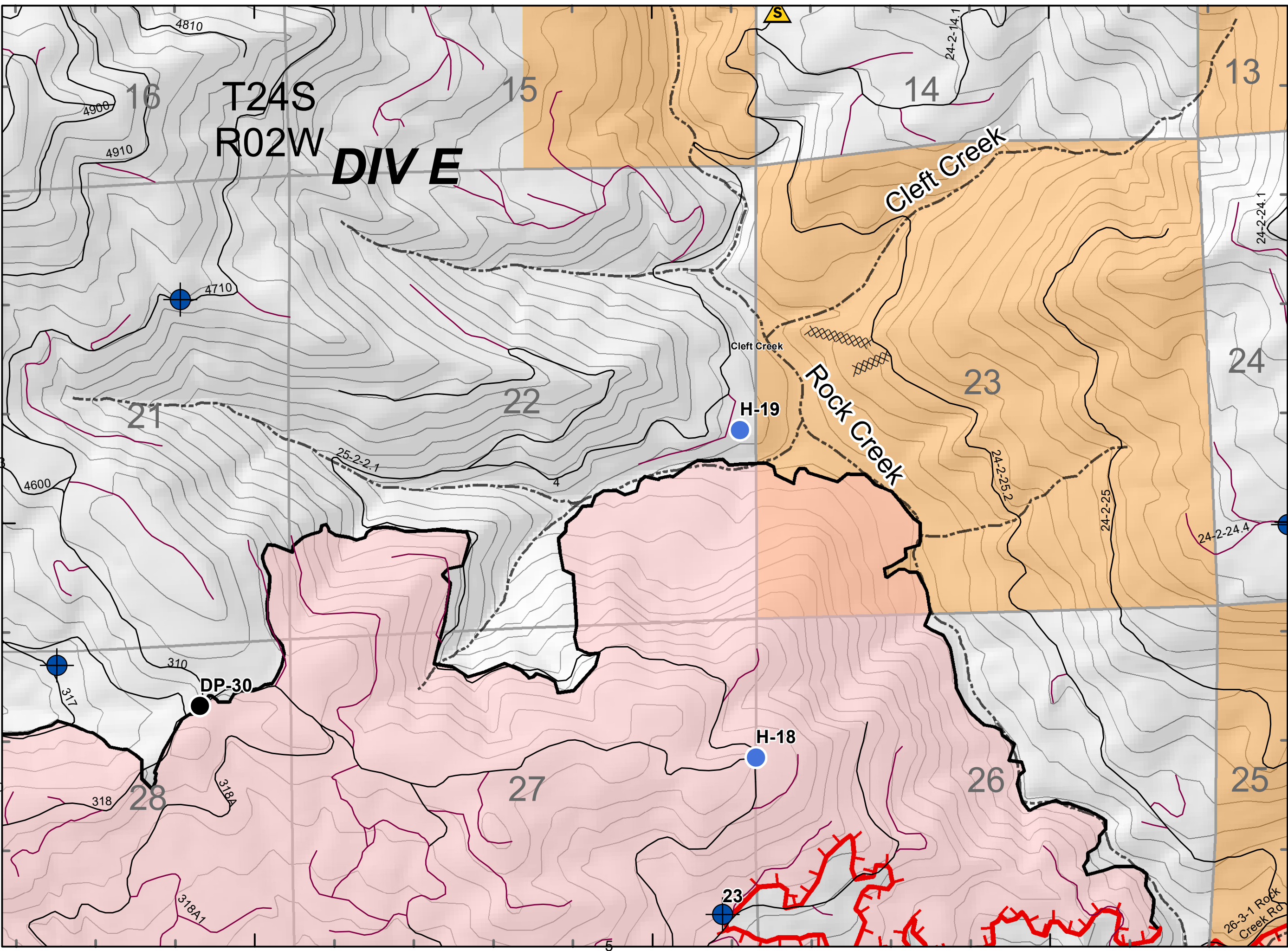
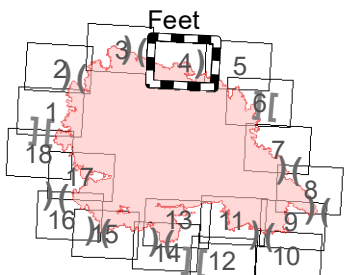
Div E

- ⊙ Camp
- × Closure
- ◆ Dip Site
- Drop Point
- 🚛 Dozer Push
- 🔥 Fire Origin
- 🌳 Hazard Tree
- 📍 Helispot
- 📶 Internet Access
- 🏠 Lookout
- 📶 Mobile Weather Unit
- 📶 Repeater
- ⚠️ Safety Zone
- 🔥 Spot Fire
- 📶 Staging Area
- 🌊 Water Source
- 🌊 Restricted Water Source
- ⊕ Water Development or Draft Site
- 🏠 Value at Risk
- ⌘ Division Break
- ⌘ Branch Break
- 🔴 Uncontrolled Fire Edge
- 🟢 Contained Line
- ⌘ Completed Dozer Line
- H - Completed Hand Line
- R - Road as Completed Line
- 🛣️ Access or Improved Road
- 🚧 Completed Burnout
- 🚧 Planned Fire Line
- Planned Secondary Line
- 🚧 Temporary Flight Restriction
- 🚧 Road Repair
- 🚧 Management Action Point
- 🔴 Wildfire Daily Fire Perimeter



43°28'N

0 1,000 2,000



122°56'W

122°55'W

122°54'W

26-3-1 Rock Creek Rd

IAP Map

Archie Creek Fire
OR-UPF-000436

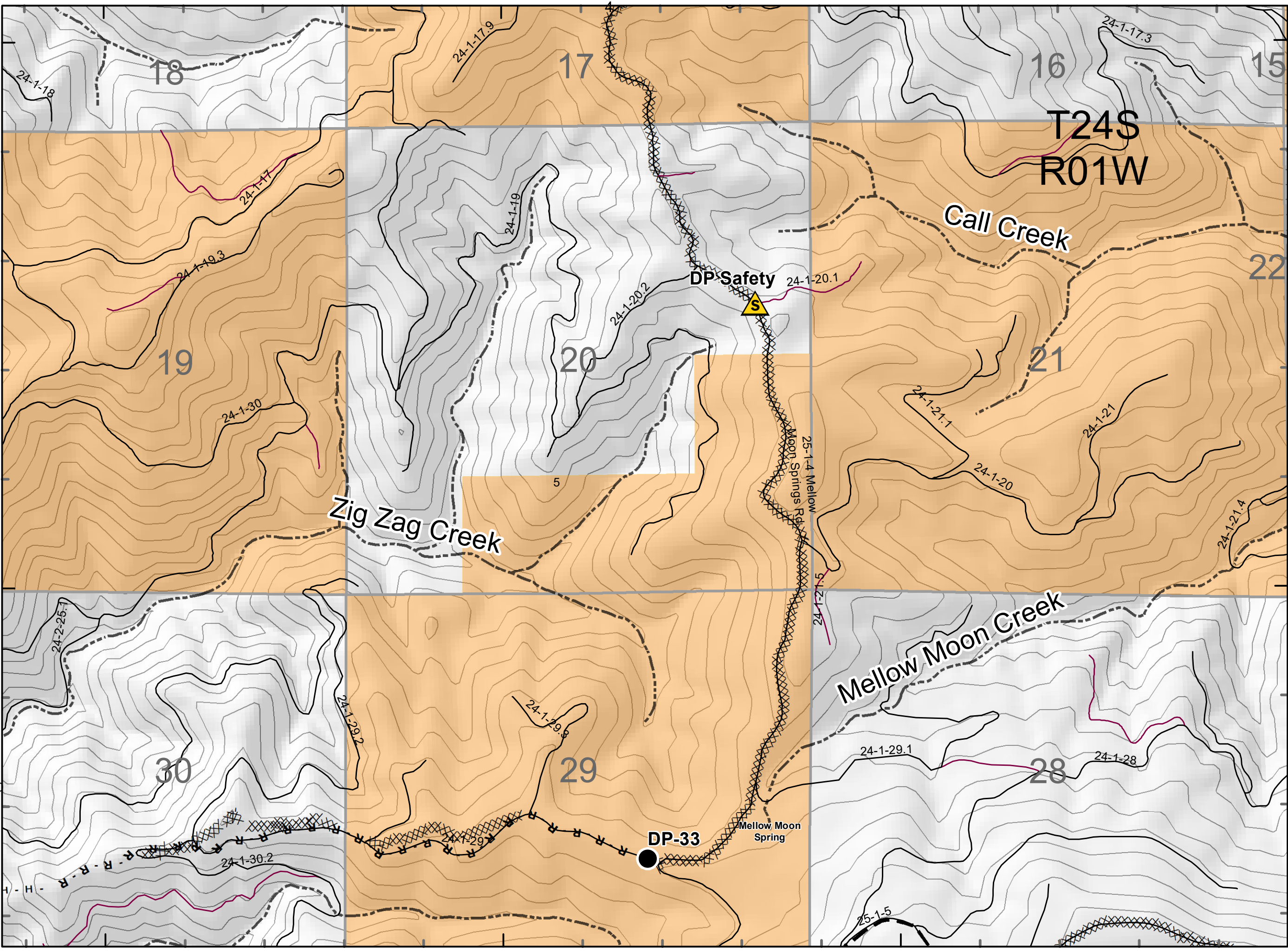
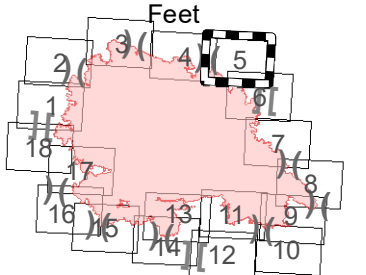
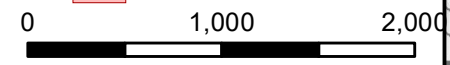
10/01/2020 0600 - 2000hrs

131,542 Acres

Map Page: 5

Div F

- ⊙ Camp
- × Closure
- ◆ Dip Site
- Drop Point
- 🚛 Dozer Push
- 🔥 Fire Origin
- 🌳 Hazard Tree
- 📡 Helispot
- 📶 Internet Access
- 🏠 Lookout
- 🚚 Mobile Weather Unit
- 📡 Repeater
- ⚠️ Safety Zone
- 🔥 Spot Fire
- 📍 Staging Area
- 🌊 Water Source
- 🌊 Restricted Water Source
- ⊕ Water Development or Draft Site
- 🏠 Value at Risk
- ⌘ Division Break
- ⌘ Branch Break
- 🔴 Uncontrolled Fire Edge
- 🟡 Contained Line
- ⌘ Completed Dozer Line
- H - Completed Hand Line
- R - Road as Completed Line
- 🛣️ Access or Improved Road
- 🚚 Completed Bumout
- ▬ Planned Fire Line
- Planned Secondary Line
- 🚫 Temporary Flight Restriction
- 🛣️ Road Repair
- 🚚 Management Action Point
- 🔴 Wildfire Daily Fire Perimeter



Index Map

IAP Map

Archie Creek Fire
OR-UPF-000436

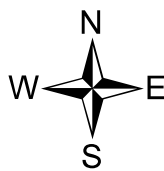
10/01/2020 0600 - 2000hrs

131,542 Acres

Map Page: 6

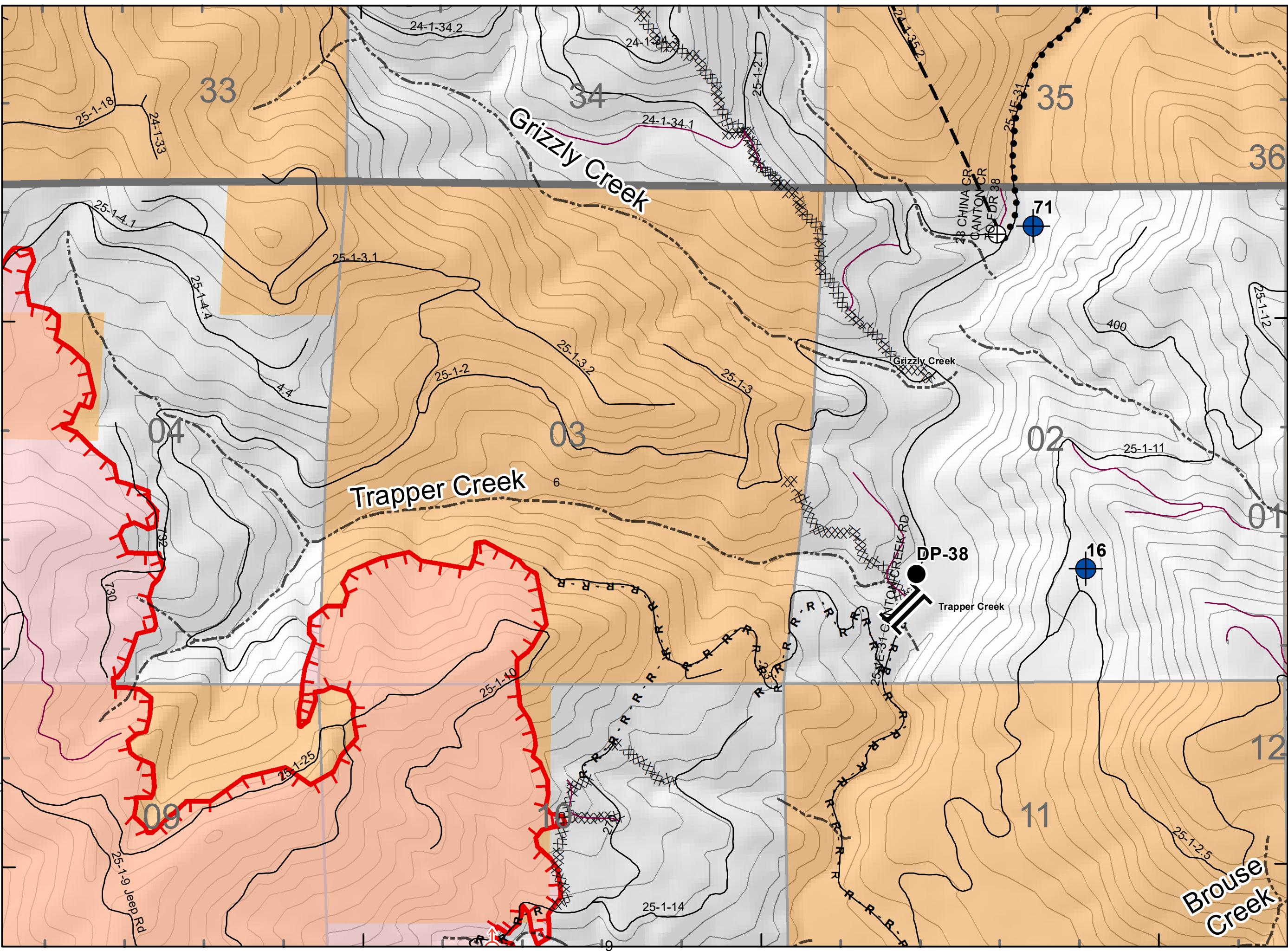
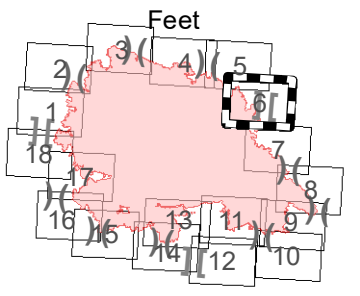
Div F, H

- Camp
- ✕ Closure
- ◆ Dip Site
- Drop Point
- 🚛 Dozer Push
- 🔥 Fire Origin
- 🌳 Hazard Tree
- 📍 Helispot
- 📶 Internet Access
- 🏠 Lookout
- 🚚 Mobile Weather Unit
- 📡 Repeater
- ⚠️ Safety Zone
- 🔥 Spot Fire
- 📍 Staging Area
- 🌊 Water Source
- 🌊 Restricted Water Source
- ⊕ Water Development or Draft Site
- 🏠 Value at Risk
- ⌘ Division Break
- ⌘ Branch Break
- 🔴 Uncontrolled Fire Edge
- 🟡 Contained Line
- ⌘ Completed Dozer Line
- H - Completed Hand Line
- R - Road as Completed Line
- 🛣️ Access or Improved Road
- 🚚 Completed Bumout
- 🚚 Planned Fire Line
- Planned Secondary Line
- 🚫 Temporary Flight Restriction
- 🛣️ Road Repair
- 🚚 Management Action Point
- 🔴 Wildfire Daily Fire Perimeter



43°26'N

0 1,000 2,000



43°26'N

43°26'N

122°48'W

122°47'W

122°46'W

Index Map

IAP Map

Archie Creek Fire
OR-UPF-000436

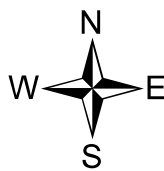
10/01/2020 0600 - 2000hrs

131,542 Acres

Map Page: 7

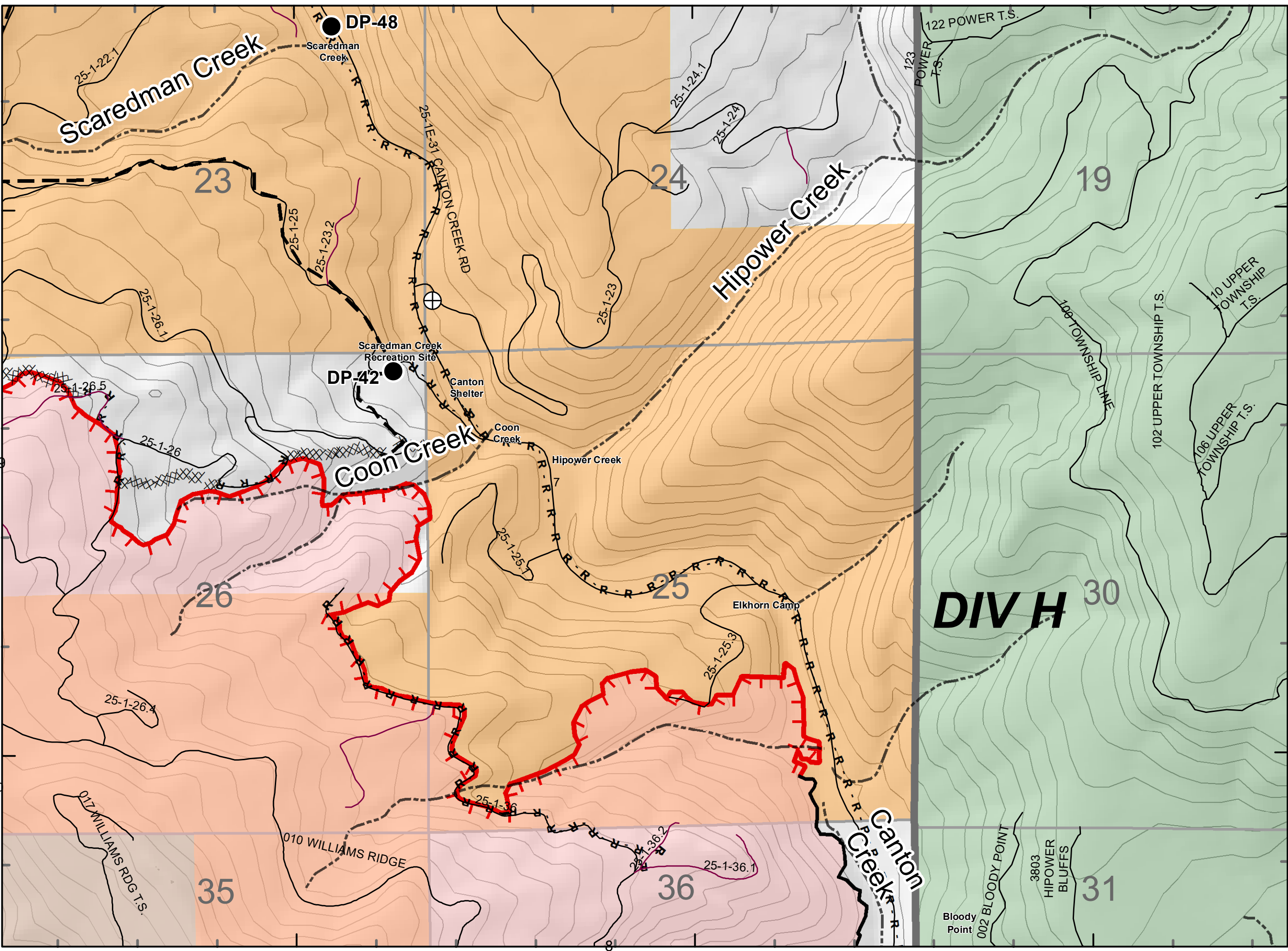
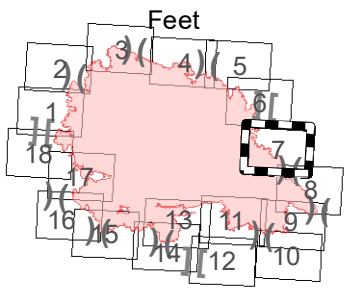
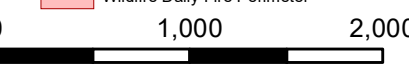
Div H

- Camp
- × Closure
- ◆ Dip Site
- Drop Point
- 🚛 Dozer Push
- 🔥 Fire Origin
- 🌳 Hazard Tree
- 📍 Helispot
- 📶 Internet Access
- 🏠 Lookout
- 📶 Mobile Weather Unit
- 📶 Repeater
- ⚠️ Safety Zone
- 🔥 Spot Fire
- 📶 Staging Area
- 🌊 Water Source
- 🌊 Restricted Water Source
- ⊕ Water Development or Draft Site
- 🏠 Value at Risk
- ✂️ Division Break
- ⌘ Branch Break
- 🔴 Uncontrolled Fire Edge
- 🟡 Contained Line
- 🔴 Completed Dozer Line
- H - Completed Hand Line
- R - Road as Completed Line
- 🛣️ Access or Improved Road
- 🚛 Completed Bumout
- 🟡 Planned Fire Line
- Planned Secondary Line
- 🚫 Temporary Flight Restriction
- 🛣️ Road Repair
- 🚛 Management Action Point
- 🔴 Wildfire Daily Fire Perimeter



43°23'N

43°22'N



122°46'W

122°45'W

122°44'W

43°23'N

43°22'N

43°23'N

43°22'N

IAP Map

Archie Creek Fire
OR-UPF-000436

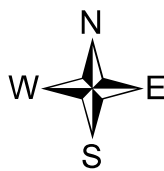
10/01/2020 0600 - 2000hrs

131,542 Acres

Map Page: 8

Div K

- Ⓒ Camp
- ✕ Closure
- ⬆ Dip Site
- Drop Point
- 🚛 Dozer Push
- 🔥 Fire Origin
- 🚒 Hazard Tree
- Helispot
- 📶 Internet Access
- 🏠 Lookout
- 🚚 Mobile Weather Unit
- 📡 Repeater
- ⚠ Safety Zone
- 🔥 Spot Fire
- 📍 Staging Area
- 🌊 Water Source
- 🚰 Restricted Water Source
- ⊕ Water Development or Draft Site
- 🏠 Value at Risk
- ⌘ Division Break
- ⌘ Branch Break
- 🔴 Uncontrolled Fire Edge
- 🟤 Contained Line
- ⌘ Completed Dozer Line
- H - Completed Hand Line
- R - Road as Completed Line
- 🛣 Access or Improved Road
- 🚚 Completed Bumout
- ▬ Planned Fire Line
- Planned Secondary Line
- 🚫 Temporary Flight Restriction
- 🛣 Road Repair
- 🚚 Management Action Point
- 🔴 Wildfire Daily Fire Perimeter



43°20'N

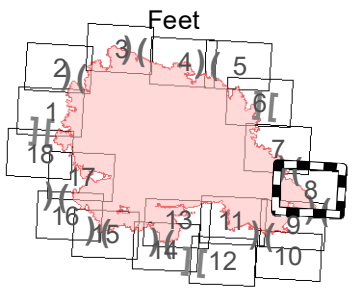
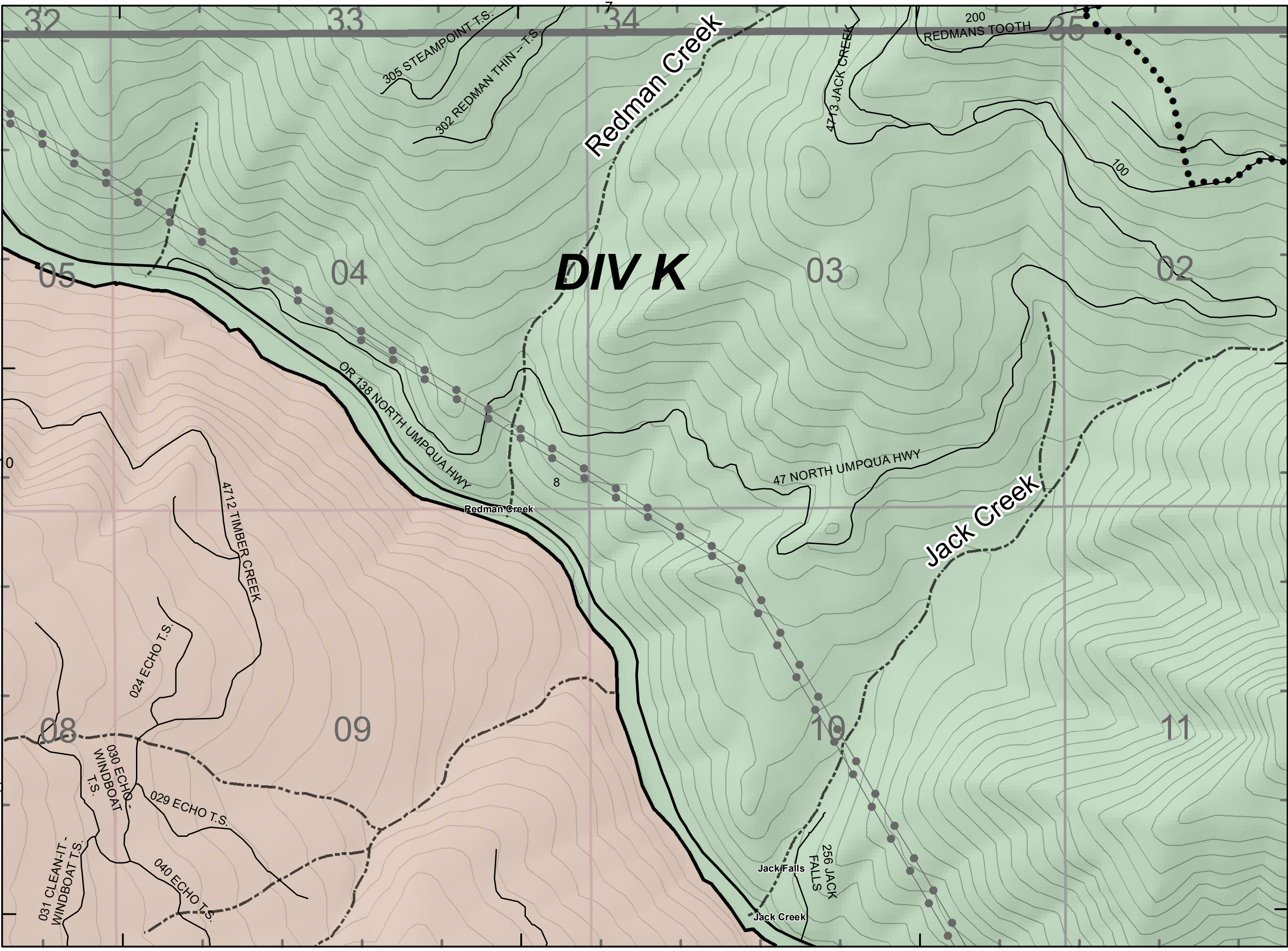
0

0

1,000

2,000

43°19'N



Index Map

122°43'W

122°42'W

122°41'W

122°43'W

122°42'W

122°41'W

43°20'N

43°19'N

IAP Map

Archie Creek Fire
OR-UPF-000436

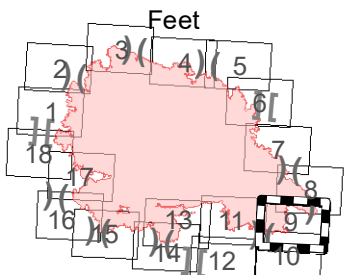
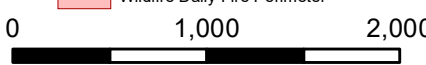
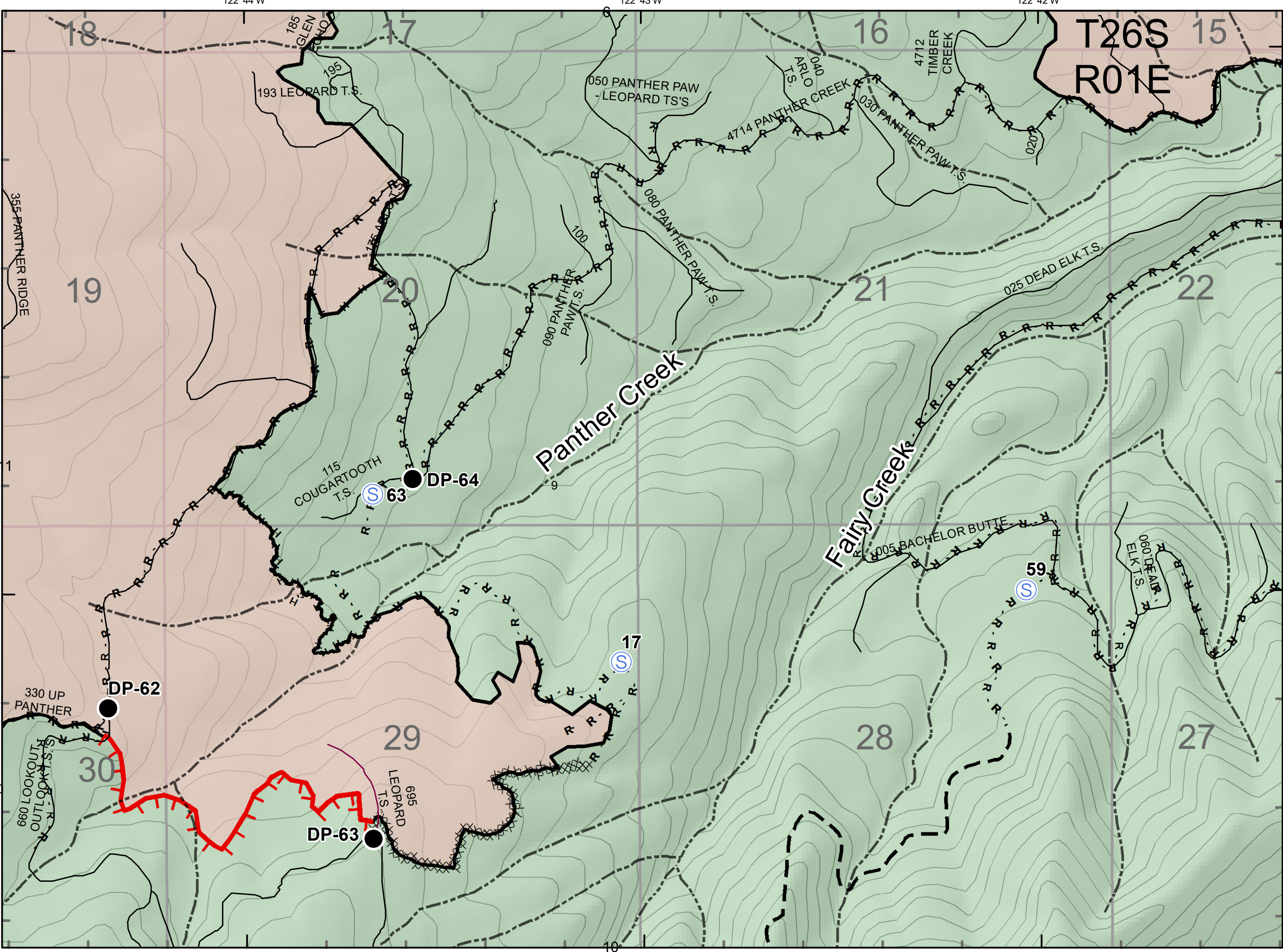
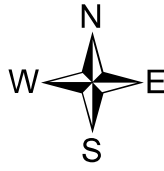
10/01/2020 0600 - 2000hrs

131,542 Acres

Map Page: 9

Div N

- Camp
- ✕ Closure
- ◆ Dip Site
- Drop Point
- 🚧 Dozer Push
- 🔥 Fire Origin
- 🌳 Hazard Tree
- Helispot
- 📶 Internet Access
- 🏠 Lookout
- 🚚 Mobile Weather Unit
- 📡 Repeater
- ⚠️ Safety Zone
- 🔥 Spot Fire
- 📶 Staging Area
- 🌊 Water Source
- 🚰 Restricted Water Source
- ⊕ Water Development or Draft Site
- 🏠 Value at Risk
- ✂️ Division Break
- ⌘ Branch Break
- 🔴 Uncontrolled Fire Edge
- 🟩 Contained Line
- 🚧 Completed Dozer Line
- H - Completed Hand Line
- R - Road as Completed Line
- 🛣️ Access or Improved Road
- 🚚 Completed Bumout
- 🟩 Planned Fire Line
- Planned Secondary Line
- 🚫 Temporary Flight Restriction
- 🛣️ Road Repair
- 🚚 Management Action Point
- 🔴 Wildfire Daily Fire Perimeter



Index Map

IAP Map

Archie Creek Fire
OR-UPF-000436

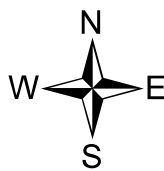
10/01/2020 0600 - 2000hrs

131,542 Acres

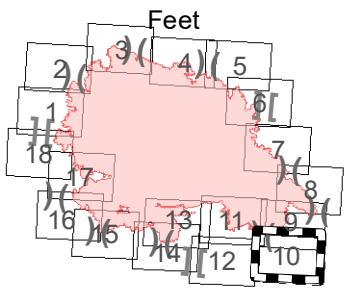
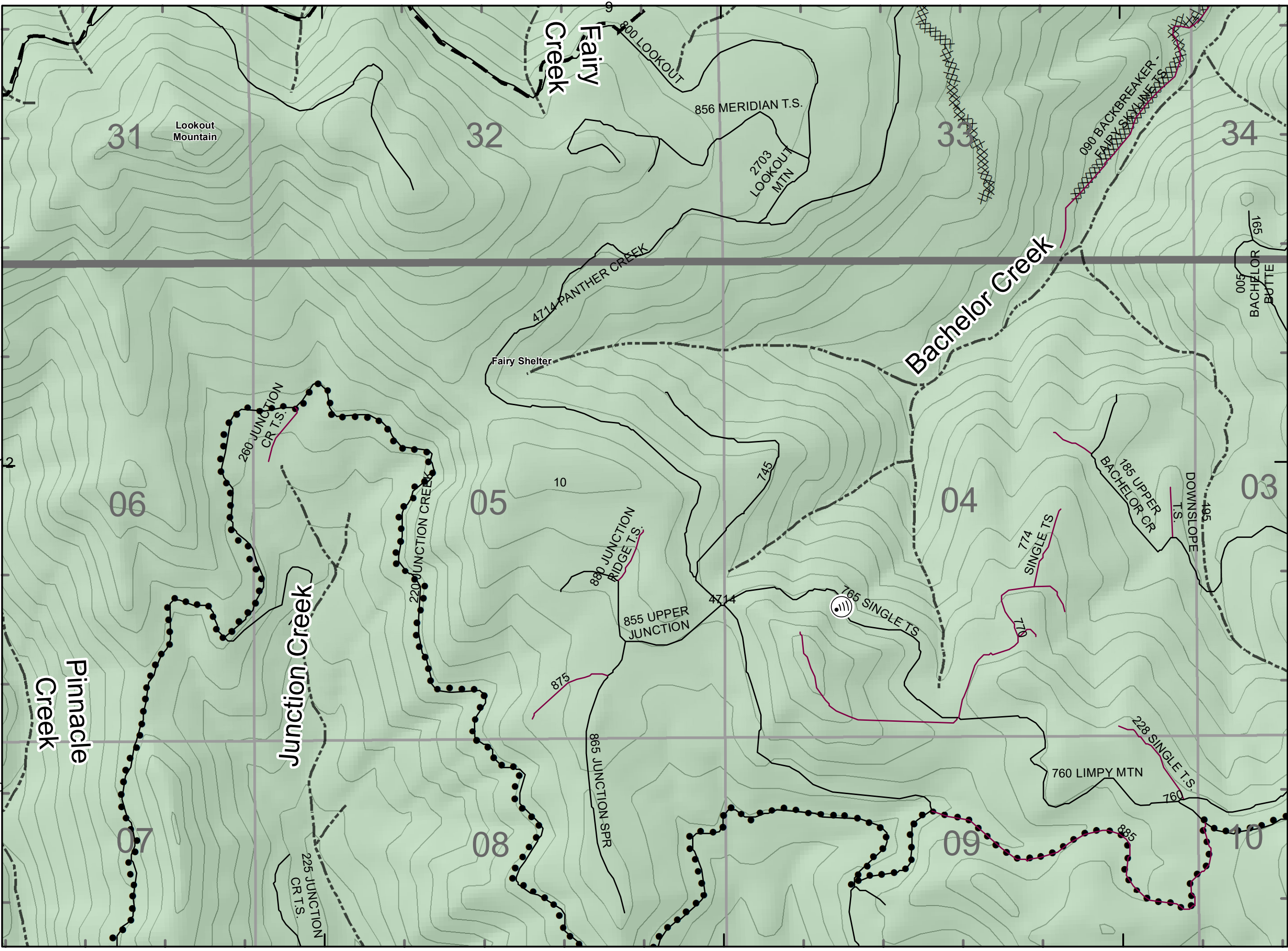
Map Page: 10

Div N

- Ⓒ Camp
- ✕ Closure
- ⬆ Dip Site
- Drop Point
- 🚛 Dozer Push
- 🔥 Fire Origin
- 🚒 Hazard Tree
- 📡 Helispot
- 📶 Internet Access
- 🏠 Lookout
- 🚚 Mobile Weather Unit
- 📡 Repeater
- ⚠ Safety Zone
- 🔥 Spot Fire
- 📶 Staging Area
- 🌊 Water Source
- 🚰 Restricted Water Source
- ⊕ Water Development or Draft Site
- ⚠ Value at Risk
- ✂ Division Break
- ⌘ Branch Break
- 🔴 Uncontrolled Fire Edge
- 🟩 Contained Line
- 🚧 Completed Dozer Line
- H - Completed Hand Line
- R - Road as Completed Line
- 🛣 Access or Improved Road
- 🚚 Completed Bumout
- 🚧 Planned Fire Line
- Planned Secondary Line
- 🚫 Temporary Flight Restriction
- 🛣 Road Repair
- 🚚 Management Action Point
- 🔴 Wildfire Daily Fire Perimeter



43°15'N



Index Map

122°44'W

122°43'W

122°42'W

IAP Map

Archie Creek Fire
OR-UPF-000436

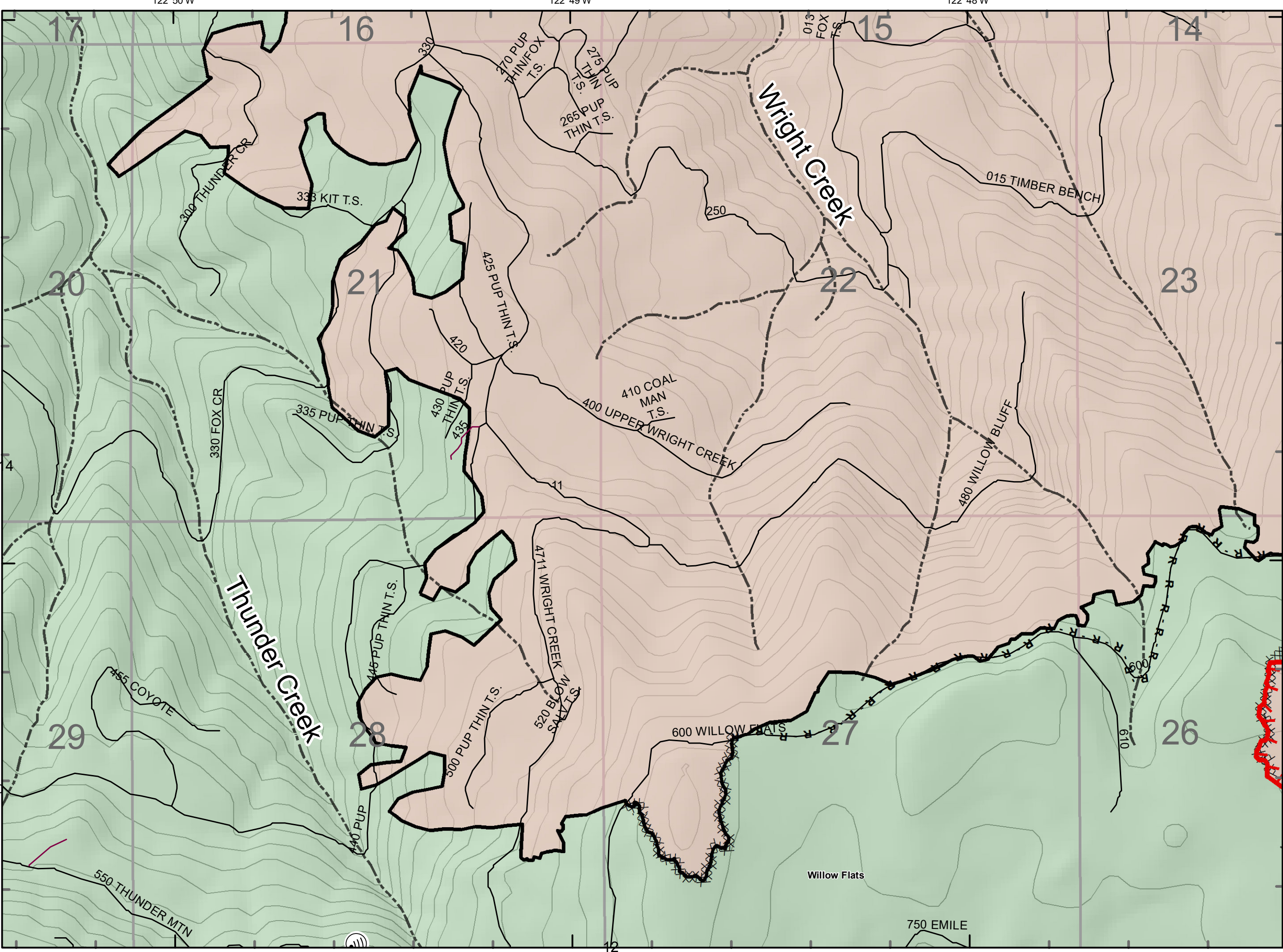
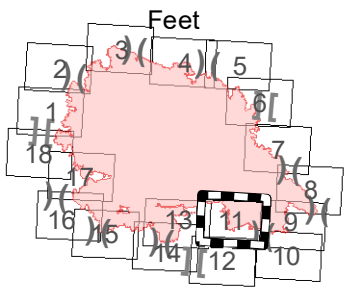
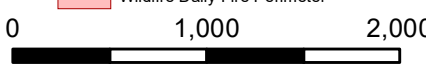
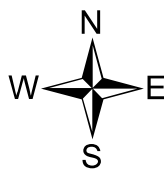
10/01/2020 0600 - 2000hrs

131,542 Acres

Map Page: 11

Div Q

- Camp
- ✕ Closure
- ◆ Dip Site
- Drop Point
- 🚛 Dozer Push
- 🔥 Fire Origin
- 🌳 Hazard Tree
- Helispot
- 📶 Internet Access
- 🏠 Lookout
- 🚚 Mobile Weather Unit
- 📡 Repeater
- ⚠️ Safety Zone
- 🔥 Spot Fire
- 📍 Staging Area
- 🌊 Water Source
- 🚰 Restricted Water Source
- ⊕ Water Development or Draft Site
- 🏠 Value at Risk
- ✂️ Division Break
- ⌘ Branch Break
- 🔴 Uncontrolled Fire Edge
- 🟡 Contained Line
- 🚧 Completed Dozer Line
- 👤 Completed Hand Line
- 🛣️ Road as Completed Line
- 🛣️ Access or Improved Road
- 🚧 Completed Bumout
- 🛣️ Planned Fire Line
- Planned Secondary Line
- 🚧 Temporary Flight Restriction
- 🛣️ Road Repair
- 🚧 Management Action Point
- 🔴 Wildfire Daily Fire Perimeter



Index Map

IAP Map

Archie Creek Fire
OR-UPF-000436

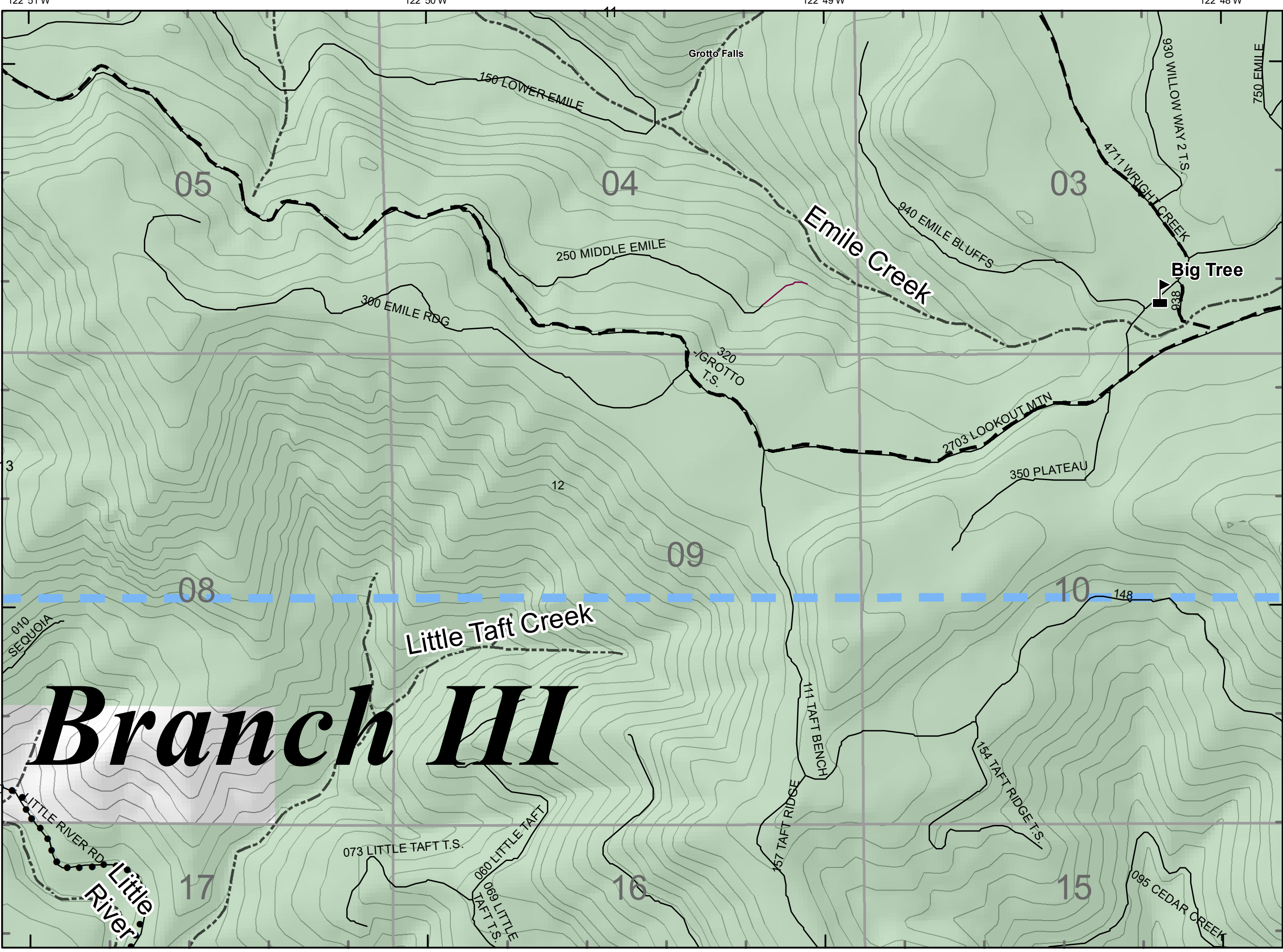
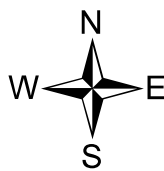
10/01/2020 0600 - 2000hrs

131,542 Acres

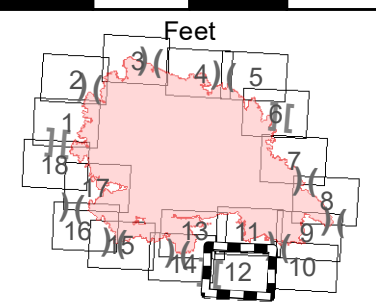
Map Page: 12

Div Q

- ⊙ Camp
- × Closure
- ⬆ Dip Site
- Drop Point
- 🚛 Dozer Push
- 🔥 Fire Origin
- 🌲 Hazard Tree
- 📡 Helispot
- 📶 Internet Access
- 🏠 Lookout
- 🚚 Mobile Weather Unit
- 📡 Repeater
- ⚠ Safety Zone
- 🔥 Spot Fire
- 📶 Staging Area
- 🌊 Water Source
- 🚰 Restricted Water Source
- ⊕ Water Development or Draft Site
- 🏠 Value at Risk
- ⌘ Division Break
- ⌘ Branch Break
- 🔴 Uncontrolled Fire Edge
- 🟤 Contained Line
- ⌘ Completed Dozer Line
- H - Completed Hand Line
- R - Road as Completed Line
- 🛣 Access or Improved Road
- 🚚 Completed Bumout
- 🔴 Planned Fire Line
- Planned Secondary Line
- 🚫 Temporary Flight Restriction
- 🛣 Road Repair
- 🚚 Management Action Point
- 🔴 Wildfire Daily Fire Perimeter



Branch III



Index Map

122°51'W 122°50'W 122°49'W 122°48'W

43°15'N 43°14'N

IAP Map

Archie Creek Fire
OR-UPF-000436

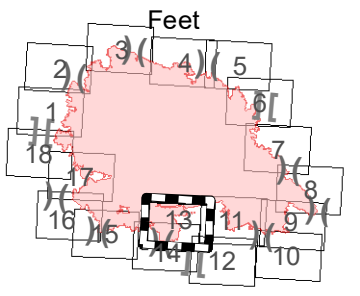
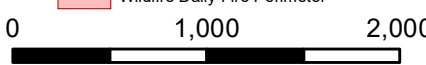
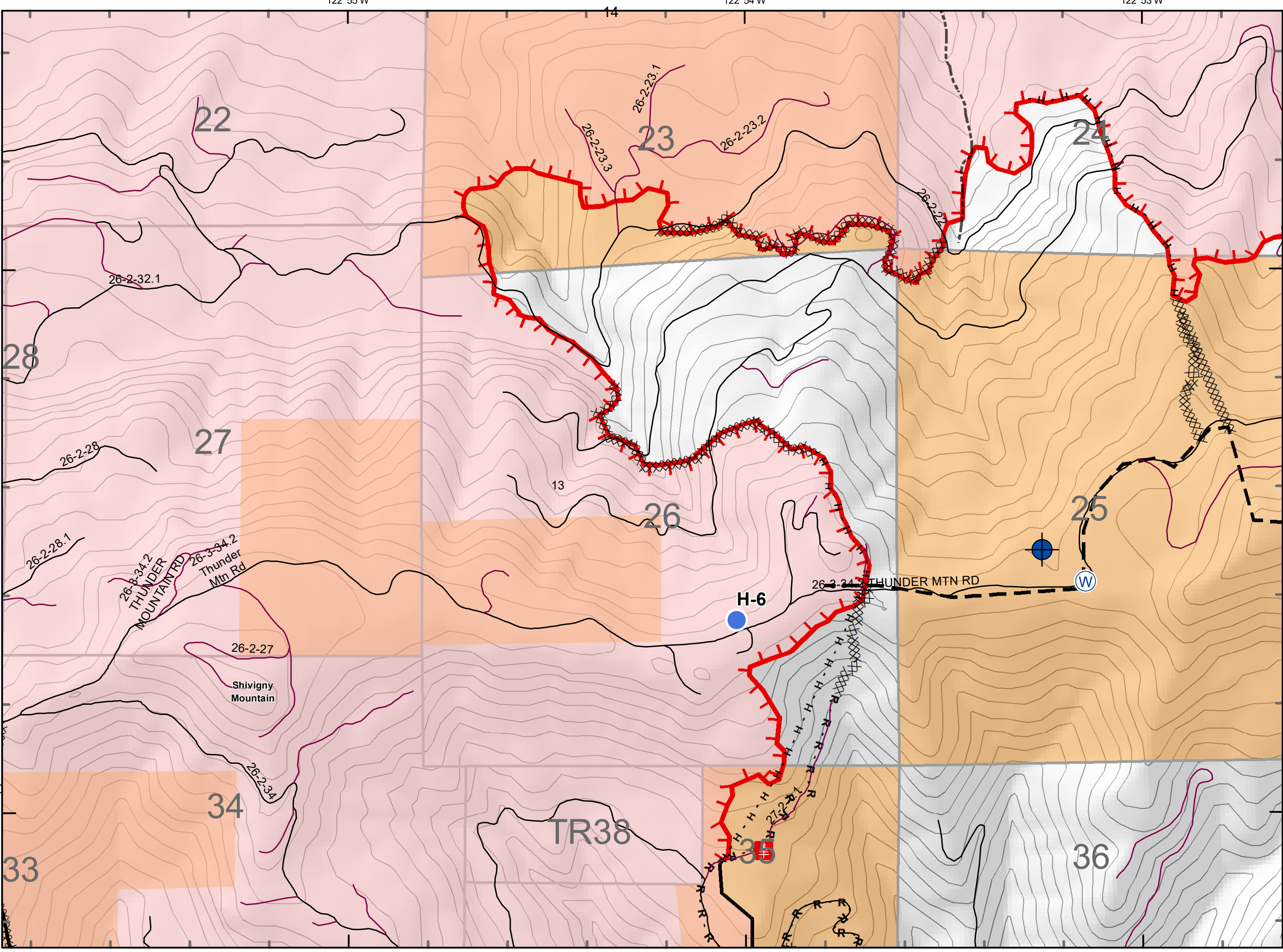
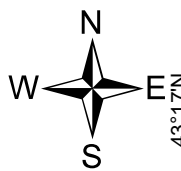
10/01/2020 0600 - 2000hrs

131,542 Acres

Map Page: 13

Div R, S

- Ⓒ Camp
- ✕ Closure
- ⬆ Dip Site
- Drop Point
- 🚛 Dozer Push
- 🔥 Fire Origin
- 🌳 Hazard Tree
- 📍 Helispot
- 📶 Internet Access
- 🏠 Lookout
- 🚚 Mobile Weather Unit
- 📡 Repeater
- ⚠ Safety Zone
- 🔥 Spot Fire
- 📍 Staging Area
- 🌊 Water Source
- 🌊 Restricted Water Source
- ⊕ Water Development or Draft Site
- 🏠 Value at Risk
- ✂ Division Break
- ⌌ Branch Break
- 🔴 Uncontrolled Fire Edge
- ⬜ Contained Line
- ⓧⓧⓧ Completed Dozer Line
- H - Completed Hand Line
- R - Road as Completed Line
- 🛣 Access or Improved Road
- 🚧 Completed Bumout
- 🚧 Planned Fire Line
- Planned Secondary Line
- 🚫 Temporary Flight Restriction
- 🛣 Road Repair
- 🚧 Management Action Point
- 🔴 Wildfire Daily Fire Perimeter



Index Map

122°55'W 122°54'W 122°53'W

33

34

TR38

35

36

22

23

24

28

27

26

25

13

12

H-6

26-8-34.2
THUNDER
MOUNTAIN RD

26-3-34.2
Thunder
Mtn Rd

26-3-34 THUNDER MTN RD

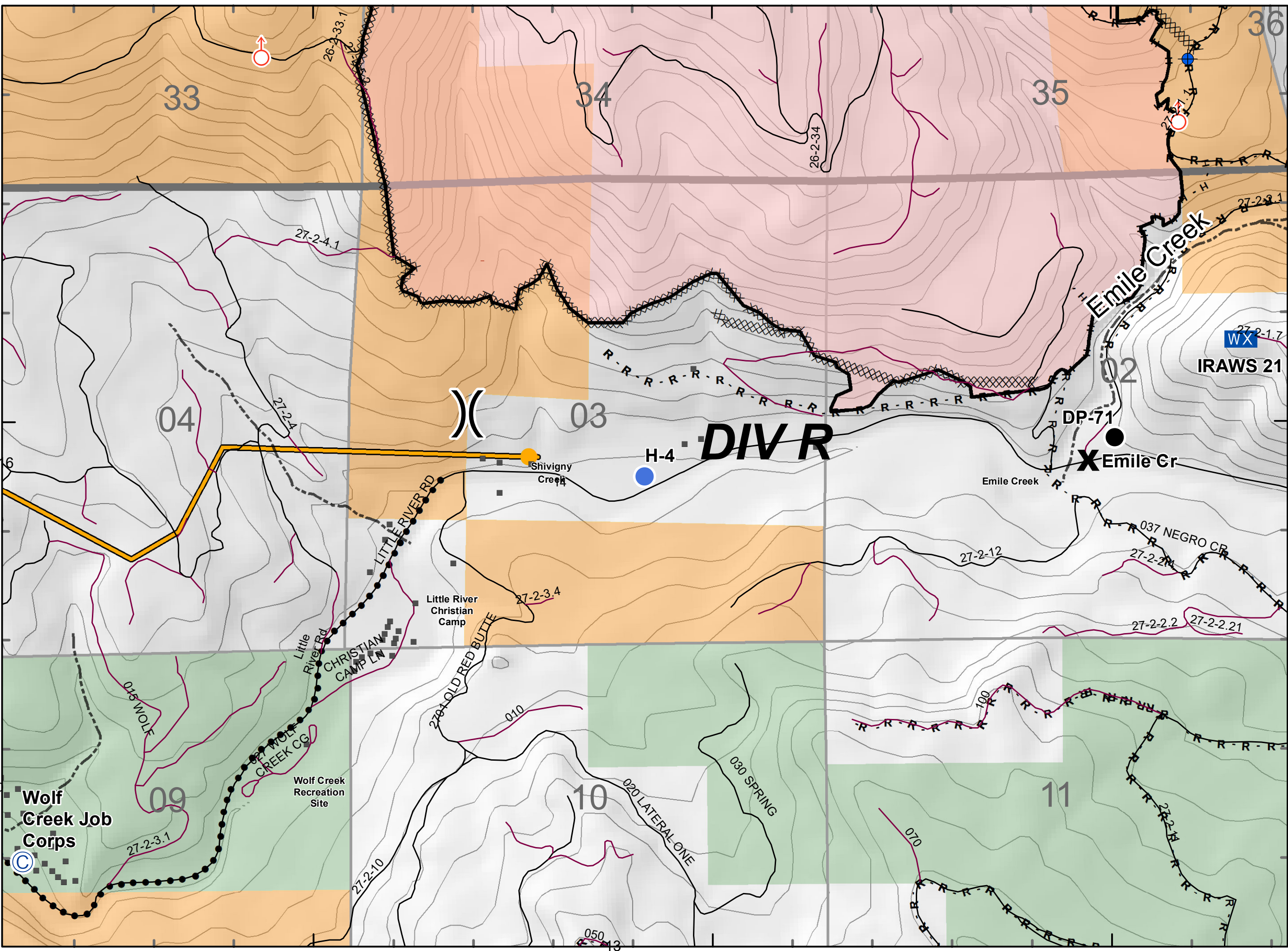
Shivigny
Mountain

122°56'W

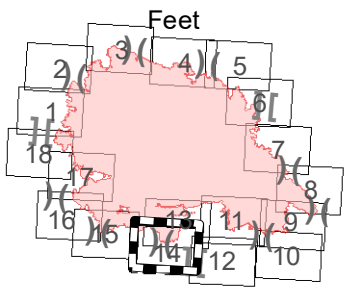
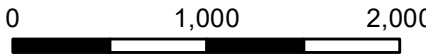
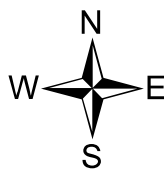
122°55'W

122°54'W

IAP Map
Archie Creek Fire
OR-UPF-000436
10/01/2020 0600 - 2000hrs
131,542 Acres
Map Page: 14
Div R, S



- ⊙ Camp
- ✕ Closure
- ⬆ Dip Site
- Drop Point
- 🚛 Dozer Push
- 🔥 Fire Origin
- 🌳 Hazard Tree
- 📍 Helispot
- 📶 Internet Access
- 🏠 Lookout
- WX Mobile Weather Unit
- 📡 Repeater
- ⚠ Safety Zone
- 🔥 Spot Fire
- 📍 Staging Area
- 🌊 Water Source
- 🌊 Restricted Water Source
- ⊕ Water Development or Draft Site
- 🏠 Value at Risk
- ⌘ Division Break
- ⌘ Branch Break
- 🔴 Uncontrolled Fire Edge
- 🟡 Contained Line
- ⌘ Completed Dozer Line
- H - Completed Hand Line
- R - Road as Completed Line
- 🛣 Access or Improved Road
- 🚧 Completed Bumout
- 🚧 Planned Fire Line
- Planned Secondary Line
- 🚧 Temporary Flight Restriction
- 🛣 Road Repair
- 🚧 Management Action Point
- 🔴 Wildfire Daily Fire Perimeter



122°56'W

122°55'W

122°54'W

Index Map

IAP Map

Archie Creek Fire
OR-UPF-000436

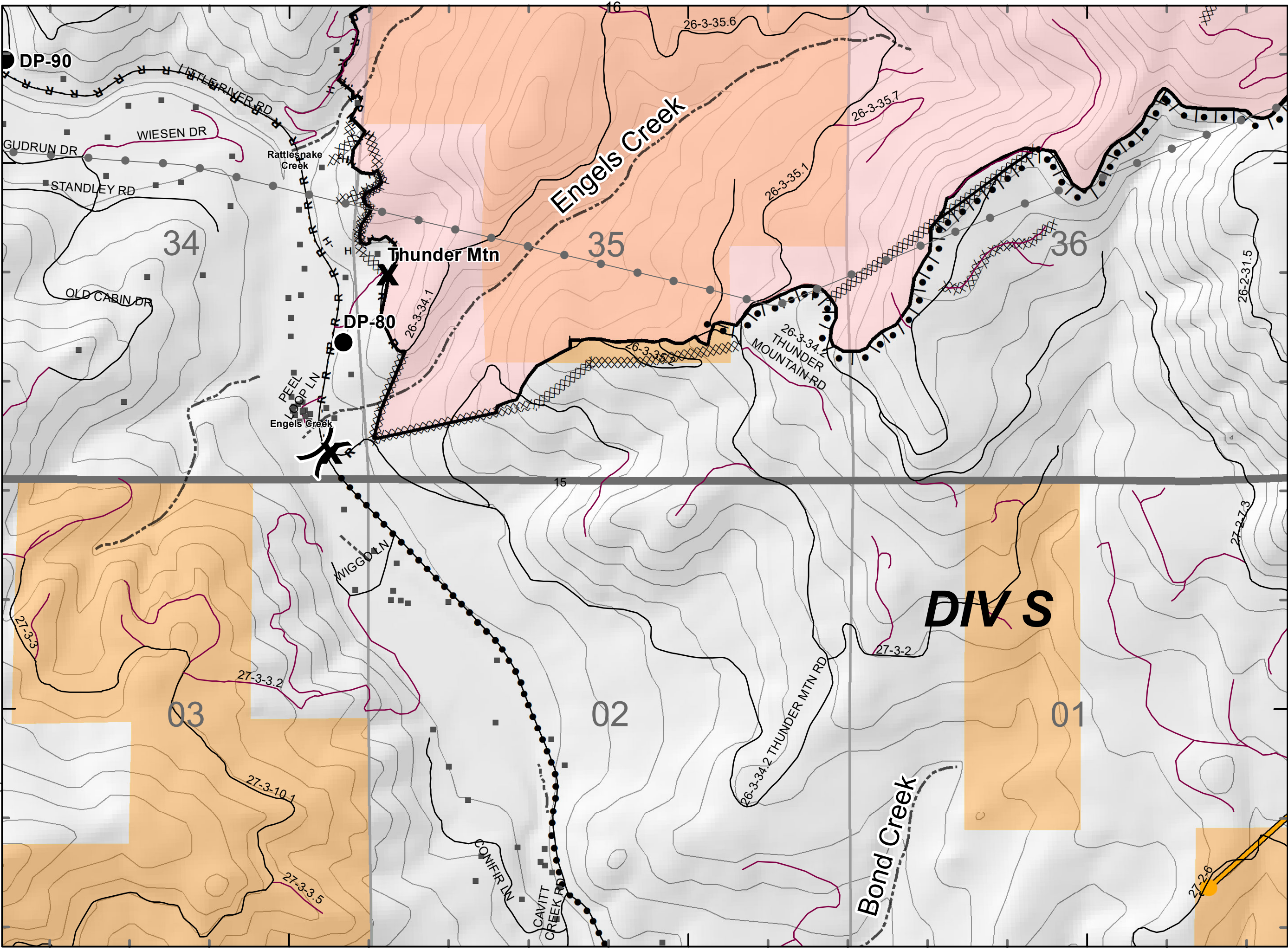
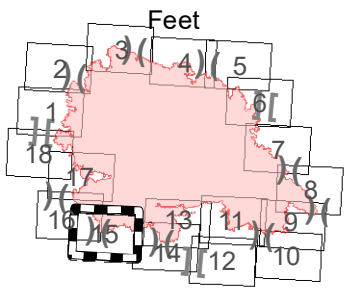
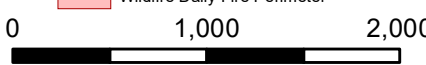
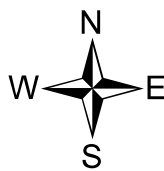
10/01/2020 0600 - 2000hrs

131,542 Acres

Map Page: 15

Div S, T

- Camp
- ✕ Closure
- ◆ Dip Site
- Drop Point
- 🚛 Dozer Push
- 🔥 Fire Origin
- 🌳 Hazard Tree
- Helispot
- 📶 Internet Access
- 🏠 Lookout
- 📡 Mobile Weather Unit
- 📡 Repeater
- ⚠️ Safety Zone
- 🔥 Spot Fire
- 📍 Staging Area
- 🌊 Water Source
- 🌊 Restricted Water Source
- ⊕ Water Development or Draft Site
- 🏠 Value at Risk
- ⌘ Division Break
- ⌘ Branch Break
- 🔴 Uncontrolled Fire Edge
- 🟡 Contained Line
- ⌘ Completed Dozer Line
- H - Completed Hand Line
- R - Road as Completed Line
- 🛣️ Access or Improved Road
- 🚛 Completed Bumout
- ▬ Planned Fire Line
- Planned Secondary Line
- 🚫 Temporary Flight Restriction
- 🛠️ Road Repair
- 🚛 Management Action Point
- 🔴 Wildfire Daily Fire Perimeter



Index Map

IAP Map

Archie Creek Fire
OR-UPF-000436

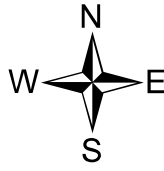
10/01/2020 0600 - 2000hrs

131,542 Acres

Map Page: 16

Div T

- ⊙ Camp
- × Closure
- ◆ Dip Site
- Drop Point
- 🚛 Dozer Push
- 🔥 Fire Origin
- 🌳 Hazard Tree
- 📍 Helispot
- 📶 Internet Access
- 🏠 Lookout
- 🚚 Mobile Weather Unit
- 📡 Repeater
- ⚠️ Safety Zone
- 🔥 Spot Fire
- 📍 Staging Area
- 🌊 Water Source
- 🚰 Restricted Water Source
- ⊕ Water Development or Draft Site
- 🏠 Value at Risk
- ⌘ Division Break
- ⌘ Branch Break
- 🔴 Uncontrolled Fire Edge
- 🟩 Contained Line
- ⌘ Completed Dozer Line
- H - Completed Hand Line
- R - Road as Completed Line
- 🛣️ Access or Improved Road
- 🚚 Completed Burnout
- ▬ Planned Fire Line
- Planned Secondary Line
- 🚫 Temporary Flight Restriction
- 🛣️ Road Repair
- 🚚 Management Action Point
- 🔴 Wildfire Daily Fire Perimeter

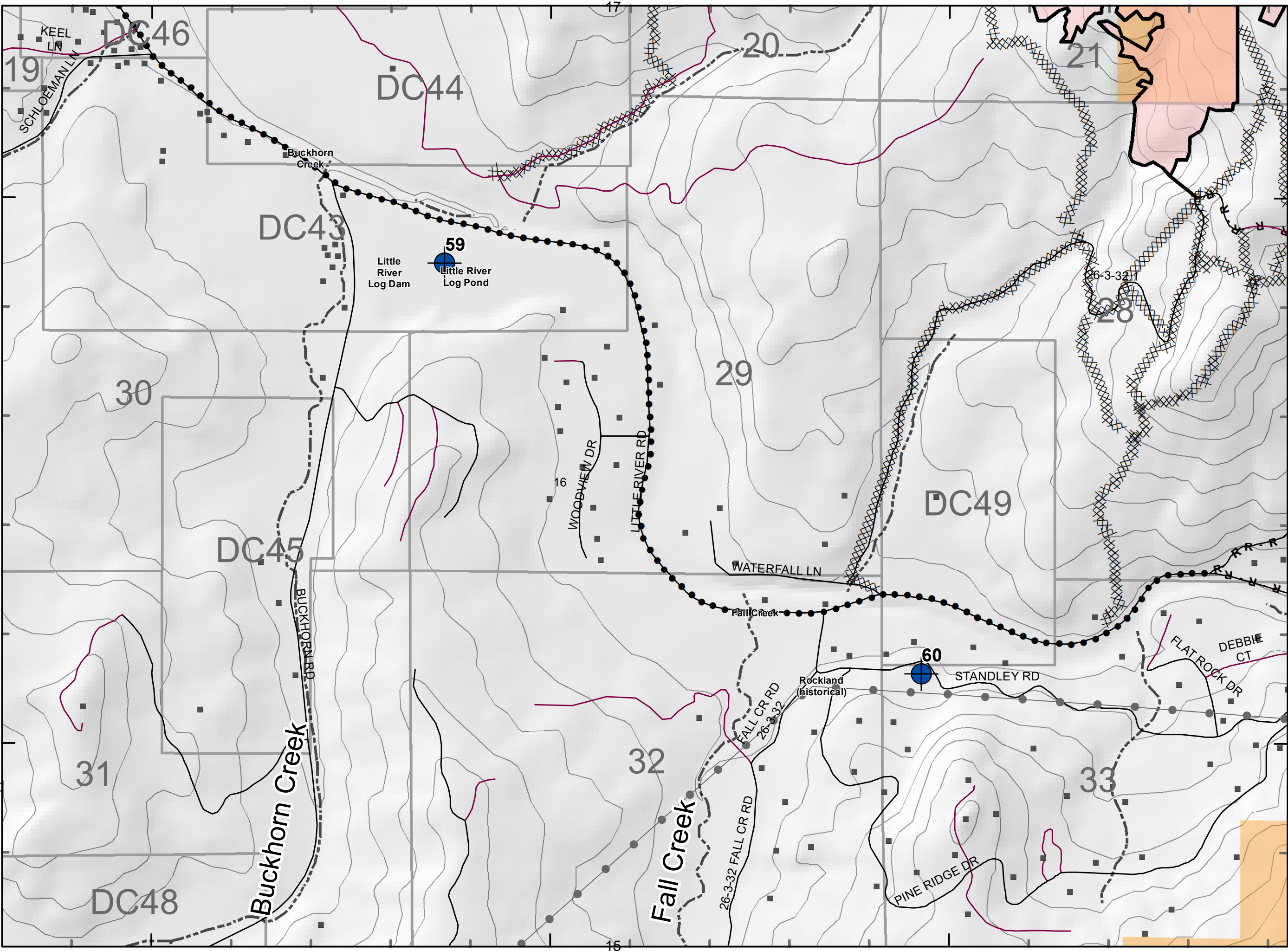
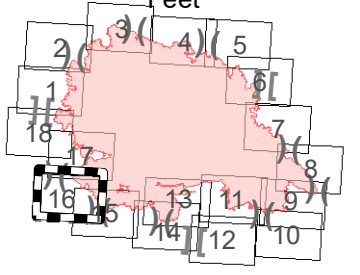


43°17'N

43°16'N

0 1,000 2,000

Feet



43°17'N

14

43°16'N

123°6'W

123°5'W

123°4'W

IAP Map

Archie Creek Fire
OR-UPF-000436

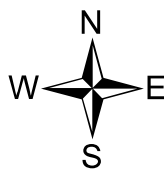
10/01/2020 0600 - 2000hrs

131,542 Acres

Map Page: 17

Div W

- Camp
- ✕ Closure
- ◆ Dip Site
- Drop Point
- 🚛 Dozer Push
- 🔥 Fire Origin
- 🌳 Hazard Tree
- Helispot
- 📶 Internet Access
- 🏠 Lookout
- 📶 Mobile Weather Unit
- 📶 Repeater
- ⚠️ Safety Zone
- 🔥 Spot Fire
- 📶 Staging Area
- 🌊 Water Source
- 🌊 Restricted Water Source
- ⊕ Water Development or Draft Site
- 🏠 Value at Risk
- ✂️ Division Break
- ✂️ Branch Break
- 🔴 Uncontrolled Fire Edge
- 🟩 Contained Line
- 🚧 Completed Dozer Line
- 👤 Completed Hand Line
- 🛣️ Road as Completed Line
- 🛣️ Access or Improved Road
- 🏠 Completed Burnout
- 🛣️ Planned Fire Line
- Planned Secondary Line
- 🚧 Temporary Flight Restriction
- 🛣️ Road Repair
- 🚧 Management Action Point
- 🟡 Wildfire Daily Fire Perimeter



43°20'N

43°19'N

123°5'W

123°4'W

123°3'W

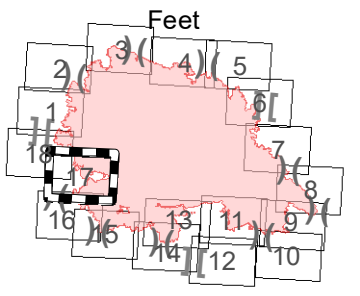
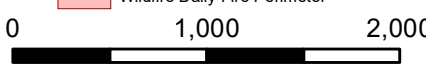
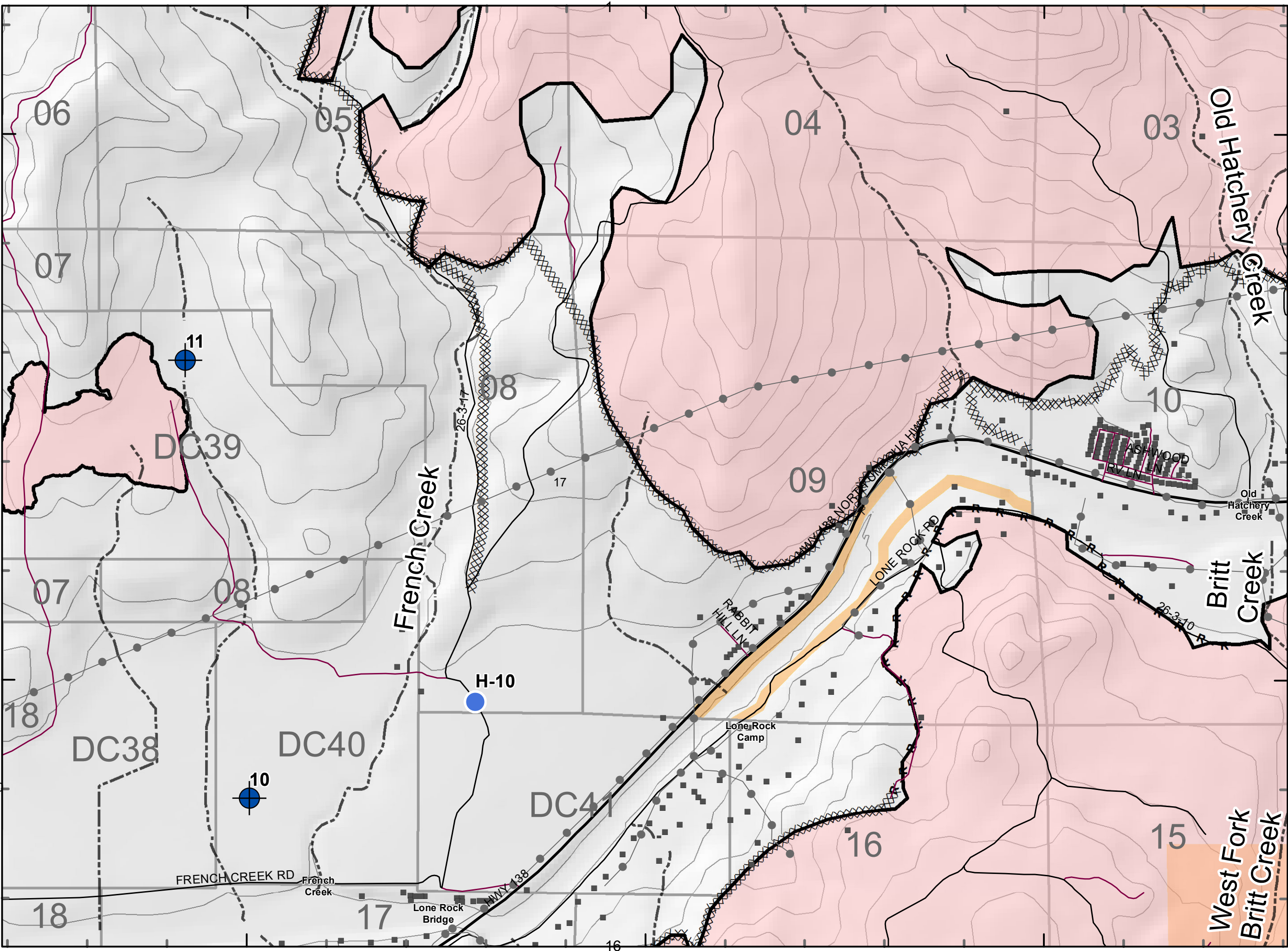
43°20'N

43°19'N

123°5'W

123°4'W

123°3'W



Index Map

IAP Map

Archie Creek Fire
OR-UPF-000436

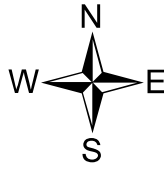
10/01/2020 0600 - 2000hrs

131,542 Acres

Map Page: 18

Div W

- ⊙ Camp
- × Closure
- ◆ Dip Site
- Drop Point
- 🚛 Dozer Push
- 🔥 Fire Origin
- 🌳 Hazard Tree
- 📶 Helispot
- 📶 Internet Access
- 🏠 Lookout
- 📶 Mobile Weather Unit
- 📶 Repeater
- ⚠️ Safety Zone
- 🔥 Spot Fire
- 📶 Staging Area
- 🌊 Water Source
- 🌊 Restricted Water Source
- ⊕ Water Development or Draft Site
- ⚠️ Value at Risk
- ⌘ Division Break
- ⌘ Branch Break
- 🔴 Uncontrolled Fire Edge
- 🟤 Contained Line
- ⌘⌘⌘ Completed Dozer Line
- H - Completed Hand Line
- R - Road as Completed Line
- 🛣️ Access or Improved Road
- 🚧 Completed Bumout
- Planned Fire Line
- Planned Secondary Line
- ⌘ Temporary Flight Restriction
- 🛣️ Road Repair
- 🚧 Management Action Point
- 🔴 Wildfire Daily Fire Perimeter



43°21'N

43°20'N

123°9'W

26

123°8'W

25

123°7'W

34

Cooper Creek

35

36

25-4-35

25-3-13

18

25-4-35.1

Huntley Creek

03

02

01

DIV W

Branch I

Hog Mountain

16

123°9'W

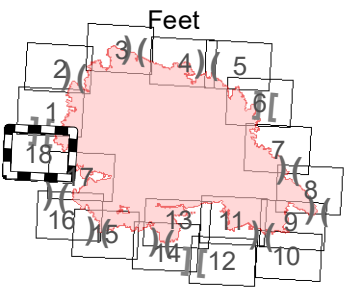
123°8'W

123°7'W

43°21'N

43°20'N

0 1,000 2,000
Feet



Index Map