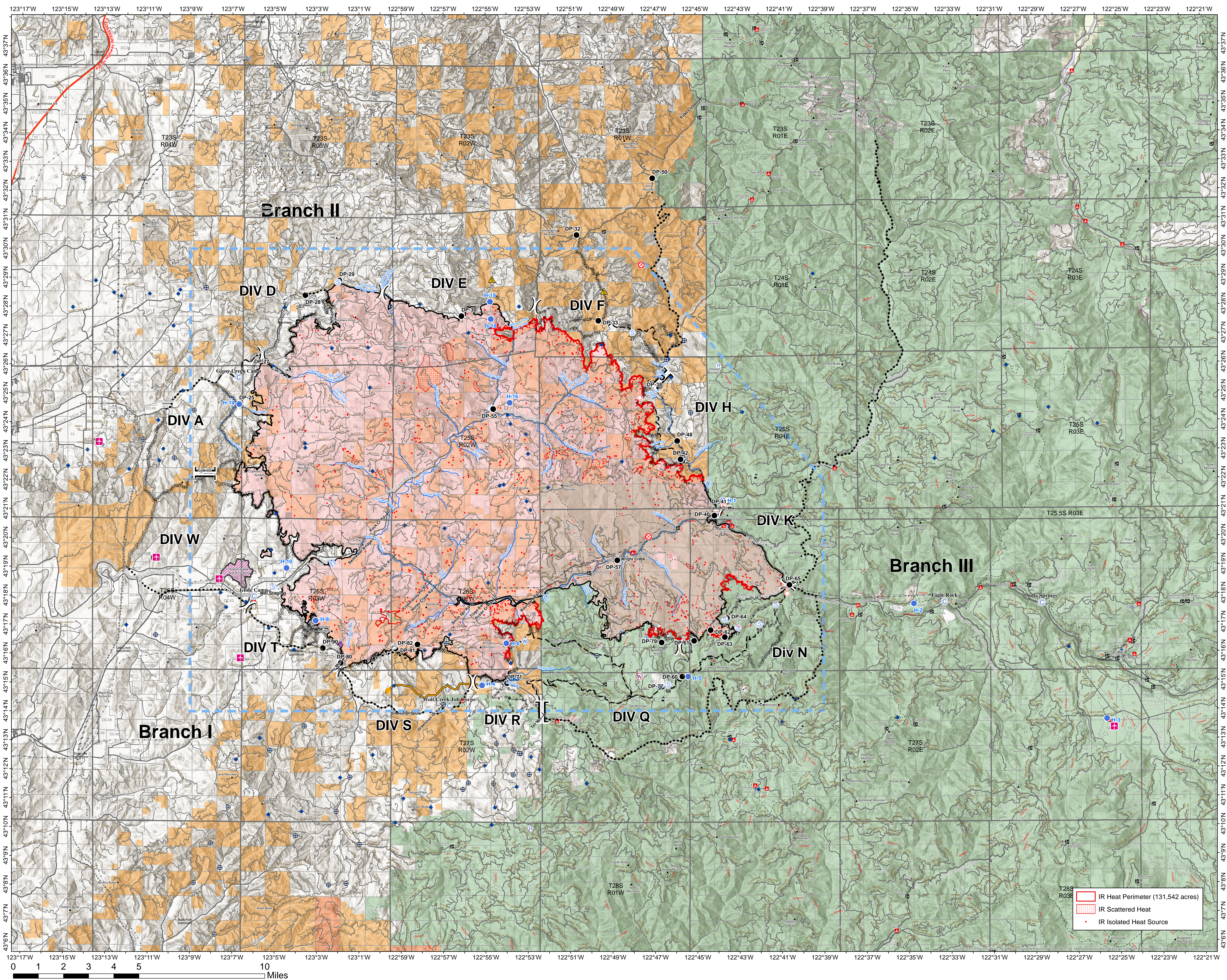




Operations
Map

131,542 Acres

- Airstrip or Airport
- Camp
- Closure
- Dip Site
- Drop Point
- Fence - Cut/Damaged
- Fire Origin
- Hazard Tree
- Helispot
- Internet Access
- Lookout
- Mobile Weather Unit
- Repair Point
- Repeater
- Retardant/Mud Pit
- Safety Zone
- Spot Fire
- Staging Area
- Water Source
- Restricted Water Source
- Water Development or Draft Site
- Value at Risk
- Division Break
- Branch Break
- Uncontrolled Fire Edge
- Contained Line
- Completed Dozer Line
- H - H - H Completed Hand Line
- R - R - R Road as Completed Line
- Access or Improved Road
- Completed Burnout
- Planned Fire Line
- Planned Secondary Line
- Temporary Flight Restriction
- Road Repair
- Management Action Point
- Interstate
- Paved
- All Weather/Dirt
- Main Non-Maritime Active
- Pump
- Other Property
- Water Tank
- PPAL Transmission Lines
- Other Fires
- Wildfire Daily Fire Perimeter
- Bureau of Indian Affairs
- Bureau of Land Management
- Corps of Engineers
- Lands Managed by Private
- Local Government
- State Agency
- U.S. Forest Service
- Undetermined



IR Heat Perimeter (131,542 acres)
IR Scattered Heat
IR Isolated Heat Source

