

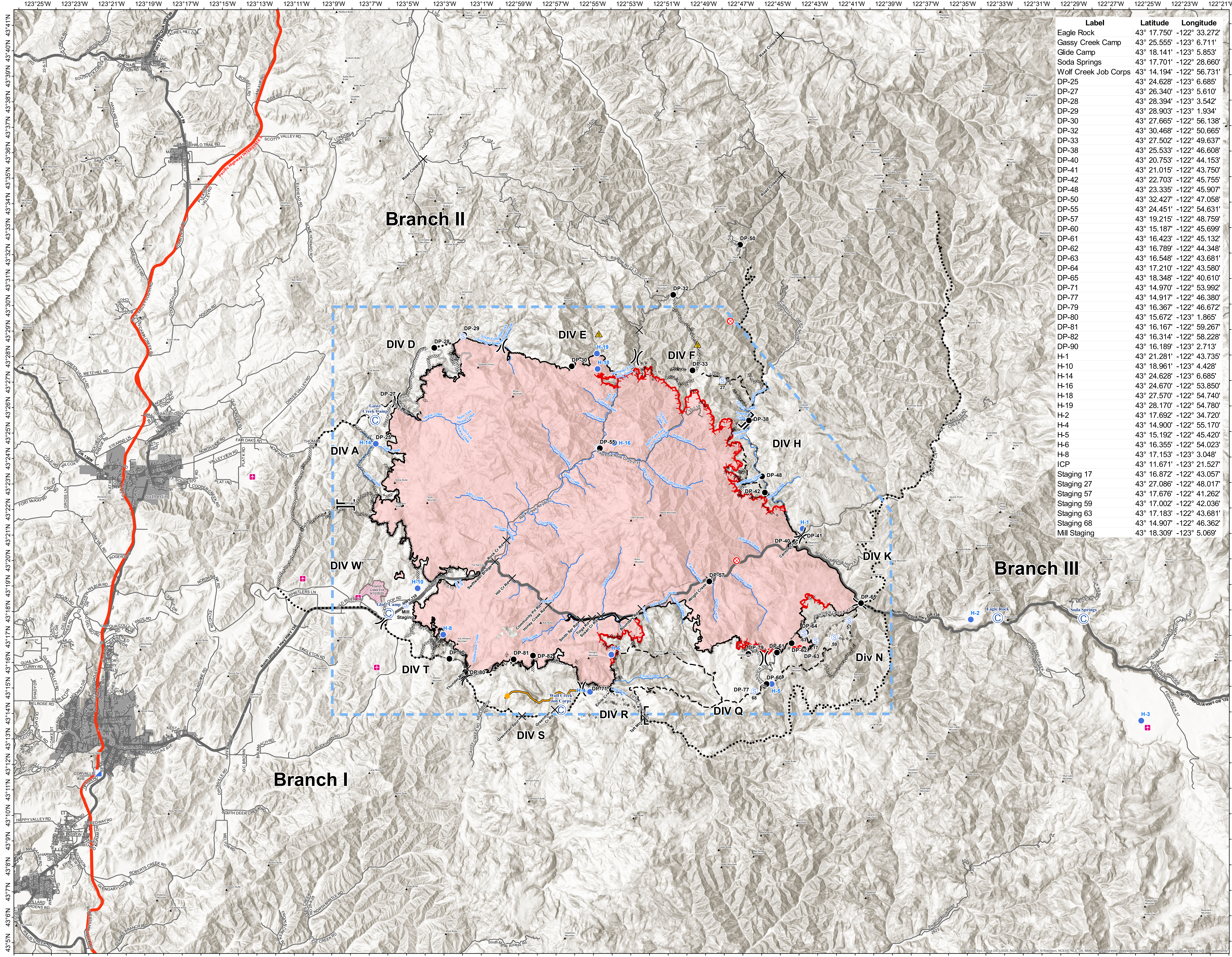
Archie Creek Fire
OR-JPF-000346
10/01/2020



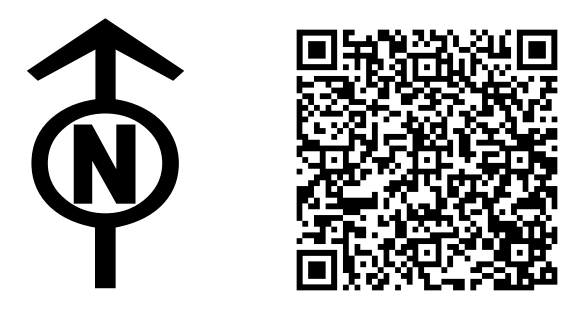
Transportation
Map

131,542 Acres

| Label | Latitude | Longitude |
|----------------------|-------------|---------------|
| Eagle Rock | 43° 17.750' | -122° 33.272' |
| Gassy Creek Camp | 43° 25.555' | -123° 6.711' |
| Glide Camp | 43° 18.141' | -123° 5.853' |
| Soda Springs | 43° 17.701' | -122° 28.660' |
| Wolf Creek Job Corps | 43° 14.194' | -122° 56.731' |
| DP-25 | 43° 24.628' | -123° 6.685' |
| DP-27 | 43° 26.340' | -123° 5.610' |
| DP-28 | 43° 28.394' | -123° 3.542' |
| DP-29 | 43° 28.903' | -123° 1.934' |
| DP-30 | 43° 27.665' | -122° 56.138' |
| DP-32 | 43° 30.468' | -122° 50.665' |
| DP-33 | 43° 27.502' | -122° 49.637' |
| DP-38 | 43° 25.533' | -122° 46.608' |
| DP-40 | 43° 20.753' | -122° 44.153' |
| DP-41 | 43° 21.015' | -122° 43.750' |
| DP-42 | 43° 22.703' | -122° 45.755' |
| DP-48 | 43° 23.335' | -122° 45.907' |
| DP-50 | 43° 32.427' | -122° 47.058' |
| DP-55 | 43° 24.451' | -122° 54.631' |
| DP-57 | 43° 19.215' | -122° 48.759' |
| DP-60 | 43° 15.187' | -122° 45.699' |
| DP-61 | 43° 16.423' | -122° 45.132' |
| DP-62 | 43° 16.789' | -122° 44.348' |
| DP-63 | 43° 16.548' | -122° 43.681' |
| DP-64 | 43° 17.210' | -122° 43.580' |
| DP-65 | 43° 18.348' | -122° 40.610' |
| DP-71 | 43° 14.970' | -122° 53.992' |
| DP-77 | 43° 14.917' | -122° 46.380' |
| DP-79 | 43° 16.367' | -122° 46.672' |
| DP-80 | 43° 15.672' | -123° 1.865' |
| DP-81 | 43° 16.167' | -122° 59.267' |
| DP-82 | 43° 16.314' | -122° 58.228' |
| DP-90 | 43° 16.189' | -123° 2.713' |
| H-1 | 43° 21.281' | -122° 43.735' |
| H-10 | 43° 18.961' | -123° 4.428' |
| H-14 | 43° 24.628' | -123° 6.685' |
| H-16 | 43° 24.670' | -122° 53.850' |
| H-18 | 43° 27.570' | -122° 54.740' |
| H-19 | 43° 28.170' | -122° 54.780' |
| H-2 | 43° 17.692' | -122° 34.720' |
| H-4 | 43° 14.900' | -122° 55.170' |
| H-5 | 43° 15.192' | -122° 45.420' |
| H-6 | 43° 16.355' | -122° 54.023' |
| H-8 | 43° 17.153' | -123° 3.048' |
| H-8 | 43° 17.153' | -123° 3.048' |
| ICP | 43° 11.671' | -123° 21.527' |
| Staging 17 | 43° 16.872' | -122° 43.057' |
| Staging 27 | 43° 27.086' | -122° 48.017' |
| Staging 57 | 43° 17.676' | -122° 41.262' |
| Staging 59 | 43° 17.002' | -122° 42.036' |
| Staging 63 | 43° 17.183' | -122° 43.681' |
| Staging 68 | 43° 14.907' | -122° 46.362' |
| Mill Staging | 43° 18.309' | -123° 5.069' |



- Airstrip or Airport
- Camp
- Closure
- Drop Point
- Fire Origin
- Helispot
- Incident Command Post
- Safety Zone
- Staging Area
- Division Break
- Branch Break
- Small Cities & Towns
- Uncontrolled Fire Edge
- Contained Line
- Completed Dozer Line
- Completed Hand Line
- Road as Completed Line
- Access or Improved Road
- Completed Burnout
- Planned Fire Line
- Planned Secondary Line
- Temporary Flight Restriction
- Road Repair
- Management Action Point
- Interstate
- Intermediate
- Paved
- Other Fires
- Cities & Towns
- Streams
- Wildfire Daily Fire Perimeter



9/30/2020 @ 2101
 NAD 1983 UTM Zone 10N
 SA Red Team GIS
 Latest Intel:
 20200928 @ 1919

0 1 2 3 4 5 10 Miles