

Archie Creek

OR-UPF-000436

Pilot Map

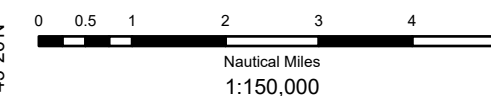
10/10/2020 Day Shift

Approx. 131,542 ac

Perimeter as of 10/02/2020 @ 2057
Datum: North American 1983

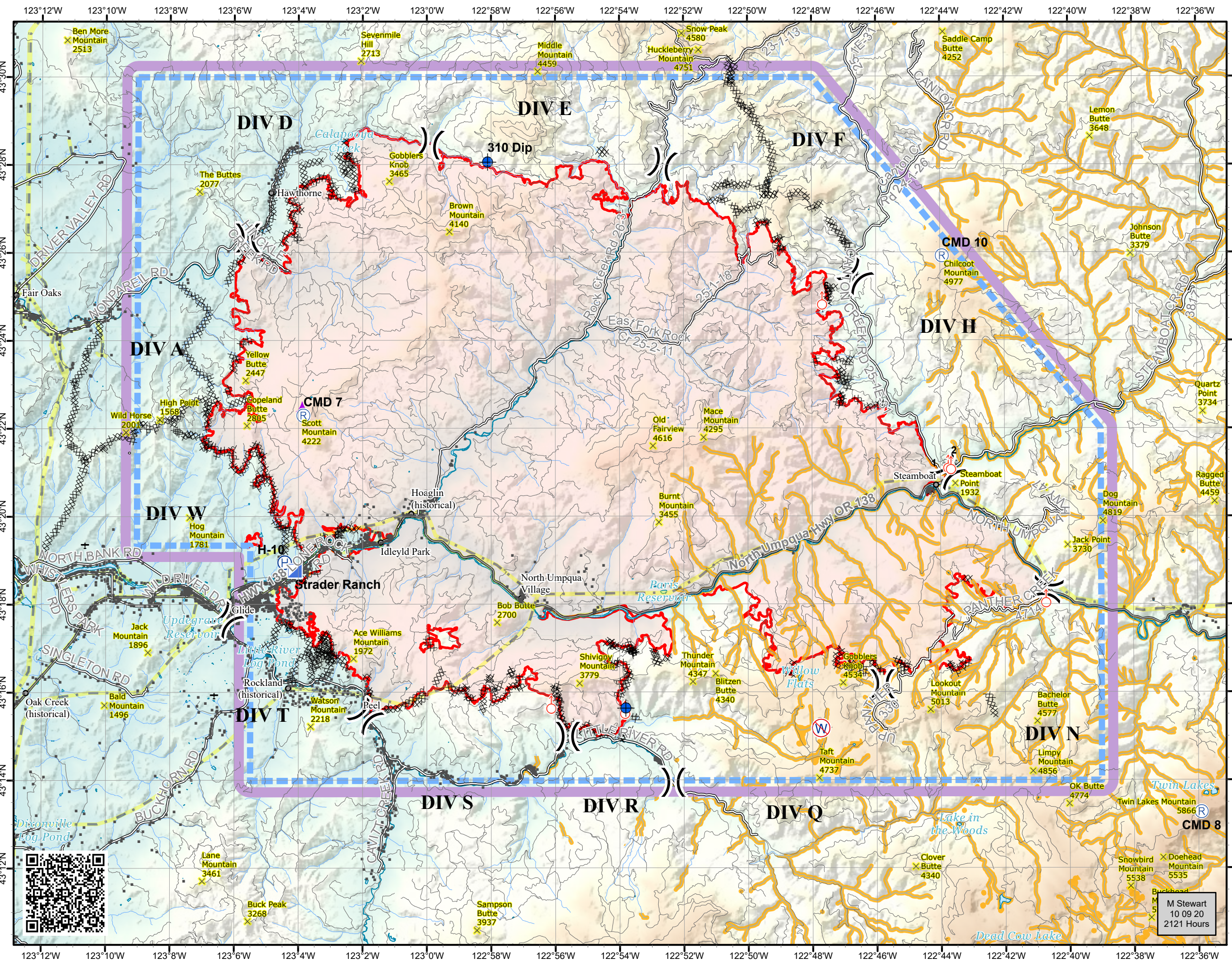


Declination 14.65° E



- TFR 0/9313 (8,000 MSL)
- Dip Site
- Helibase
- Incident Command Post
- Repeater
- Spot Fire
- Restricted Water Source
- Division Break
- Aerial Hazard
- Utility
- Retardant Avoidance
- Fire Area

FeatureCategory	Label	Lat DDM	Lon DDM
Dip Site		43° 15.663' N	122° 53.808' W
Dip Site	310 Dip	43° 28.084' N	122° 58.106' W
Helibase	H-10	43° 18.961' N	123° 4.428' W
Helispot	H-14	43° 24.628' N	123° 6.685' W
Helispot	H-16	43° 24.67' N	122° 53.85' W
Helispot	H-19	43° 28.17' N	122° 54.78' W
Helispot	H-2	43° 17.692' N	122° 34.72' W
Helispot	H-3	43° 13.683' N	122° 25.606' W
Helispot	H-4	43° 14.9' N	122° 55.17' W
Helispot	H-5	43° 15.192' N	122° 45.42' W
Helispot	H-6	43° 16.355' N	122° 54.023' W
Helispot	H-8	43° 17.142' N	123° 3.048' W
Incident Command Post	Strader Ranch	43° 18.78' N	123° 4.111' W
Repeater	CMD 10	43° 25.934' N	122° 43.934' W
Repeater	CMD 7	43° 22.315' N	123° 3.848' W
Repeater	CMD 8	43° 13.27' N	122° 35.91' W
Repeater	CMD 9	43° 9.935' N	122° 52.892' W
Restricted Water Source		43° 15.198' N	122° 47.735' W



M Stewart
10 09 20
2121 Hours

