

Archie Creek OR-UPF-000436 AirOps Map

10/11/2020 Day Shift

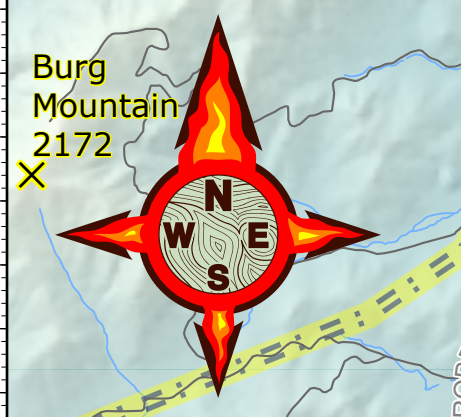
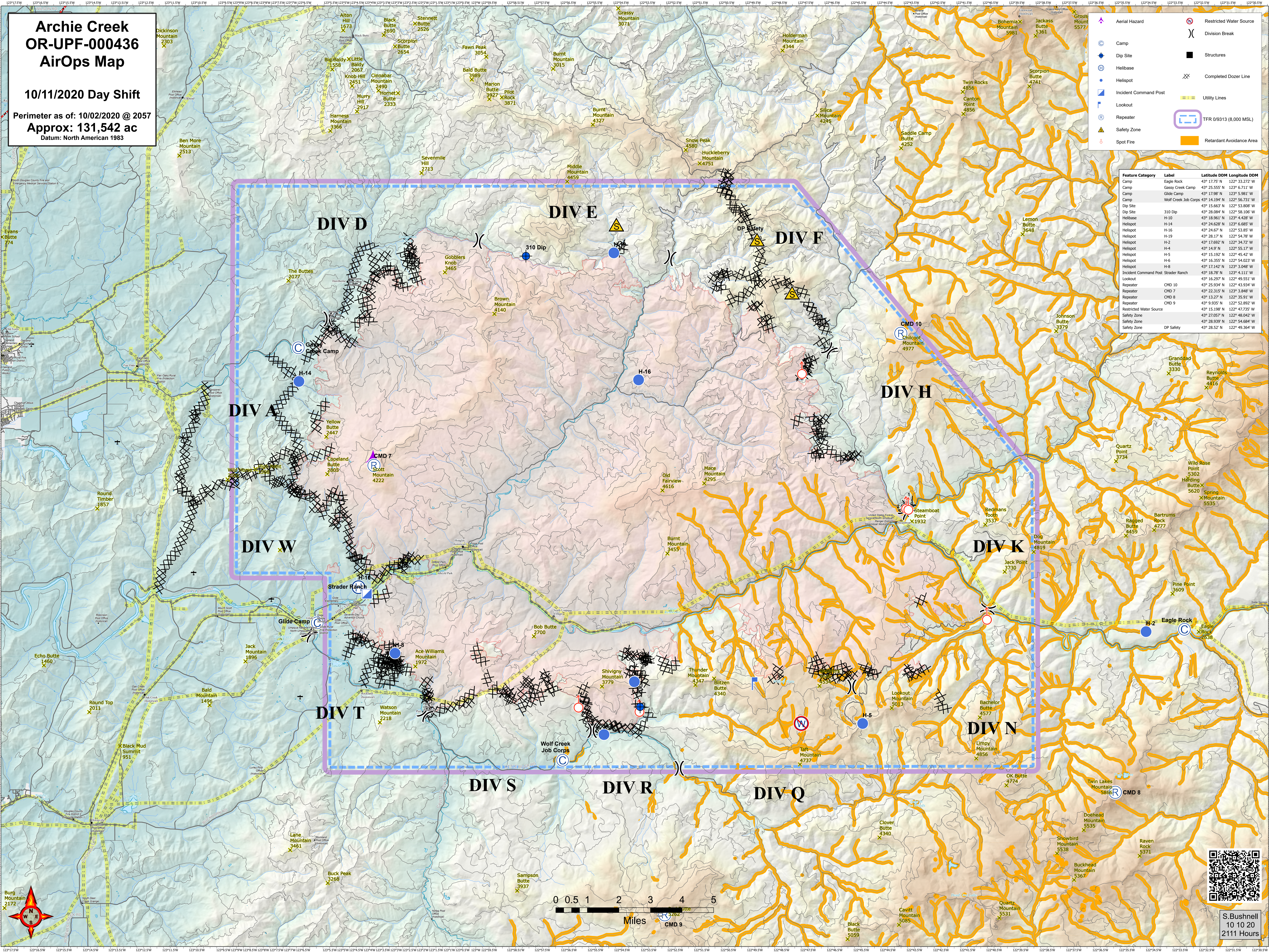
Perimeter as of: 10/02/2020 @ 2057

Approx: 131,542 ac

Datum: North American 1983

	Aerial Hazard		Restricted Water Source
	Camp		Division Break
	Dip Site		Structures
	Helibase		Completed Dozer Line
	Helispot		Utility Lines
	Incident Command Post		TFR 0/9131 (8,000 MSL)
	Lookout		Retardant Avoidance Area
	Repeater		
	Safety Zone		
	Spot Fire		

Feature Category	Label	Latitude DDM	Longitude DDM
Camp	Eagle Rock	43° 17'25" N	122° 33'22" W
Camp	Gassy Creek Camp	43° 25'55" N	123° 6'71" W
Camp	Glide Camp	43° 17'98" N	123° 5'981" W
Camp	Wolf Creek Job Corps	43° 14'594" N	122° 56'731" W
Dip Site	310 Dip	43° 28'084" N	122° 58'106" W
Helibase	H-10	43° 18'961" N	123° 4'428" W
Helispot	H-14	43° 24'628" N	122° 6'685" W
Helispot	H-16	43° 24'67" N	122° 5'385" W
Helispot	H-19	43° 28'17" N	122° 54'78" W
Helispot	H-2	43° 17'623" N	122° 54'751" W
Helispot	H-4	43° 14'9" N	122° 55'17" W
Helispot	H-5	43° 15'192" N	122° 45'42" W
Helispot	H-6	43° 16'355" N	122° 54'023" W
Helispot	H-8	43° 17'142" N	123° 3'048" W
Incident Command Post	Strader Ranch	43° 18'78" N	123° 4'111" W
Lookout	Lookout	43° 16'207" N	122° 49'51" W
Repeater	CMD 10	43° 25'934" N	122° 43'934" W
Repeater	CMD 7	43° 22'315" N	123° 3'848" W
Repeater	CMD 8	43° 13'27" N	122° 35'91" W
Repeater	CMD 9	43° 9'935" N	122° 52'892" W
Restricted Water Source	Restricted Water Source	43° 15'198" N	122° 47'735" W
Safety Zone	Safety Zone	43° 27'857" N	122° 48'942" W
Safety Zone	Safety Zone	43° 28'309" N	122° 54'684" W
Safety Zone	DP Safety	43° 28'52" N	122° 49'364" W



S. Bushnell
10 10 20
2111 Hours