

Archie Creek OR-UPF-000436 DIV F/H Suppression Repair

Datum: North American 1983
10/14/2020 Day Shift
Perimeter as of: 10/02/2020 @ 2057
Approx: 131,542 ac

| | | | |
|---------------------|------------------------|-------------|-------------------------|
| Clean Up Area | Staging Area | Fire Origin | Uncontrolled Fire Edge |
| Closure | Stream Crossing | Fire Origin | Contained Line |
| Culvert | Division Break | Fire Origin | Completed Dozer Line |
| Drop Point | Uncontrolled Fire Edge | Fire Origin | Completed Hand Line |
| Dozer Push | Contained Line | Fire Origin | Road as Completed Line |
| Fire Origin | Division Break | Fire Origin | Access or Improved Road |
| Gate | Uncontrolled Fire Edge | Fire Origin | Planned Fire Line |
| Hazard | Contained Line | Fire Origin | Planned Secondary Line |
| Internet Access | Division Break | Fire Origin | Repair Line |
| Landing or Log Deck | Uncontrolled Fire Edge | Fire Origin | Road Repair |
| Repair Point | Contained Line | Fire Origin | Main Transmission Lines |
| Repeater | Division Break | Fire Origin | |
| Resource Location | Uncontrolled Fire Edge | Fire Origin | |
| Road Repair | Contained Line | Fire Origin | |
| Safety Zone | Division Break | Fire Origin | |
| Spot Fire | Uncontrolled Fire Edge | Fire Origin | |

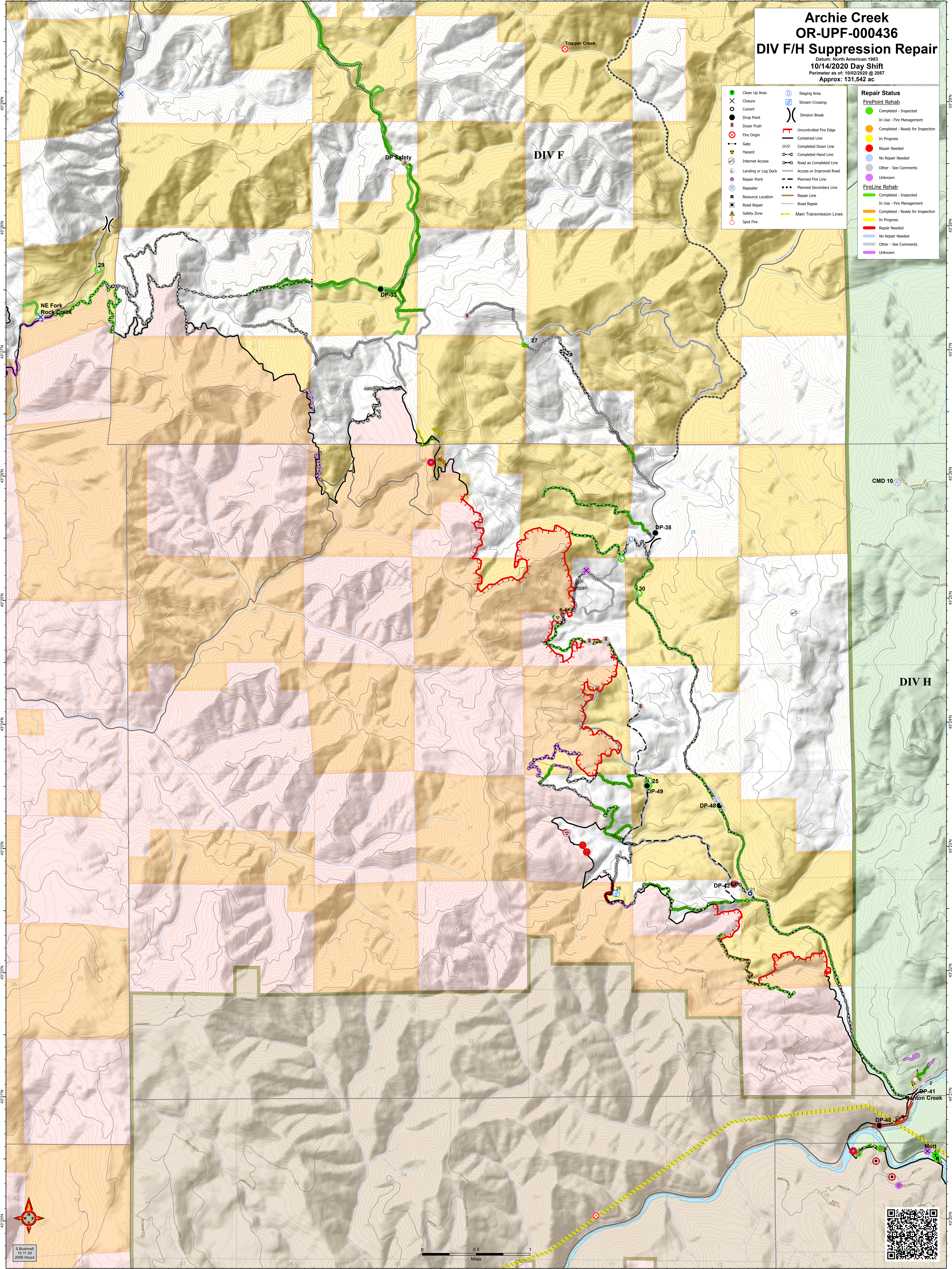
Repair Status

FirePoint Rehab

- Completed - Inspected
- In Use - Fire Management
- Completed - Ready for Inspection
- In Progress
- Repair Needed
- No Repair Needed
- Other - See Comments
- Unknown

FireLine Rehab

- In Use - Fire Management
- Completed - Ready for Inspection
- In Progress
- Repair Needed
- No Repair Needed
- Other - See Comments
- Unknown



S. Bushnell
10/14/20
2056 Hours

