

INCIDENT ACTION PLAN

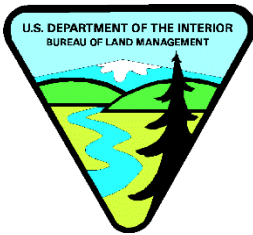
ARCHIE CREEK

OR-UPF-000436 – P6NKL8 (0615)

THIELSEN

OR-UPF-000441 – P6NKN621 (0615)

DOI-FFF200000NKN6021X



DAY OPERATIONAL PERIOD:
WEDNESDAY, OCTOBER 7, 2020
0700-1900



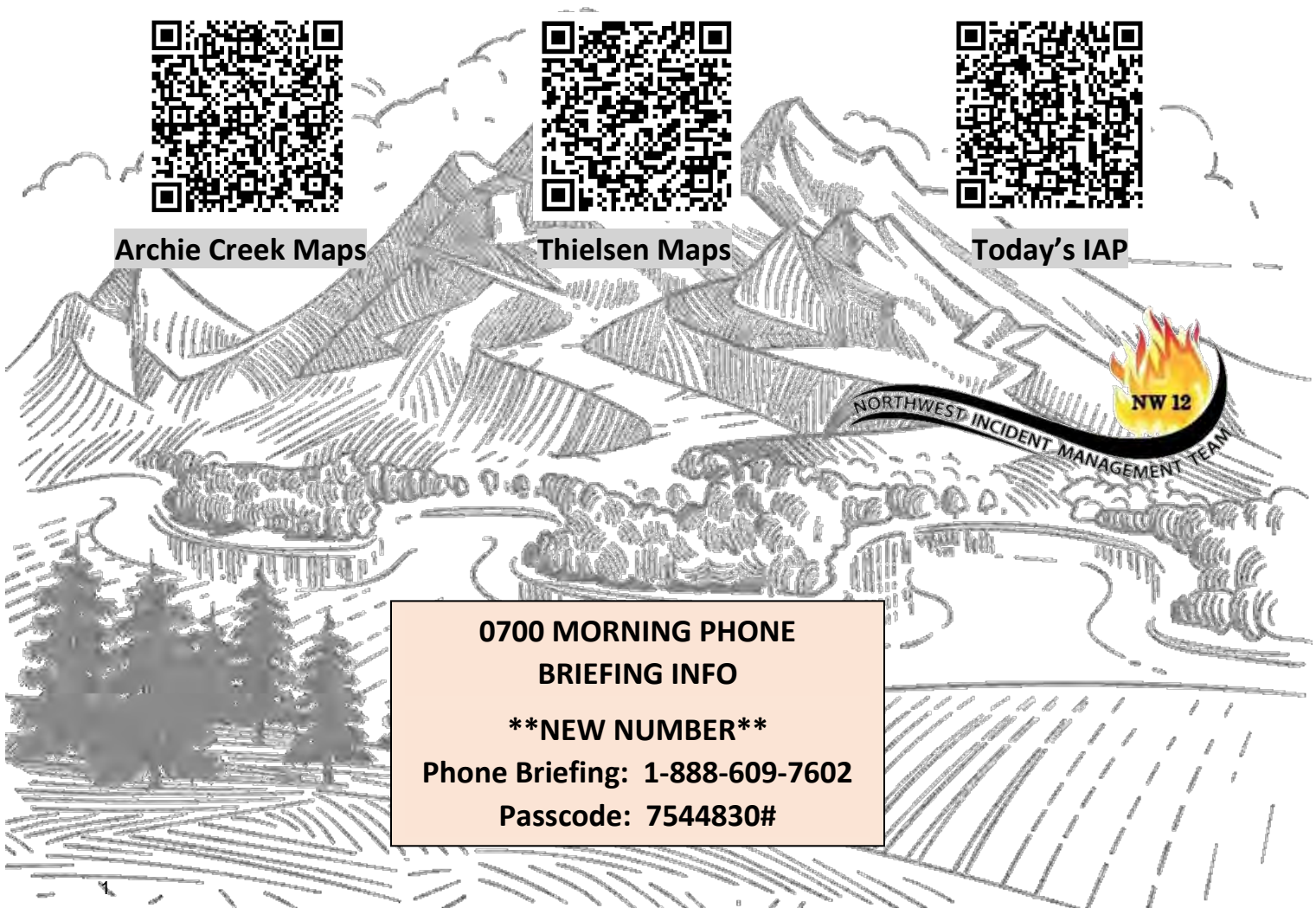
Archie Creek Maps



Thielsen Maps



Today's IAP



**0700 MORNING PHONE
BRIEFING INFO**

****NEW NUMBER****


Phone Briefing: 1-888-609-7602

Passcode: 7544830#

INCIDENT OBJECTIVES (ICS 202)

1. Incident Name:	2. Operational Period: DAY	
ARCHIE CREEK/THIELSEN	Date/Time From: 10/07/2020 0700 WED	Date/Time To: 10/07/2020 1900 WED
3. Objective(s):		
<p>Provide for the safety of all incident personnel and the public through the application of deliberate risk assessment (DRA).</p> <p>Base management decisions on meeting objectives while also minimizing the of COVID-19 exposure to responders and the public. COVID-19 considerations may alter how goals are achieved; however, should not lead to higher-risk tactics.</p> <p>Minimize acres burned on private lands and O&C lands managed by BLM. On Umpqua National Forest ownership, suppress the fire in the most efficient manner while maintaining a high probability of success protecting identified values.</p> <p>Implement and continue to coordinate suppression repair actions in close coordination with the lead READ to ensure, to the extent possible, impacts minimize further damage when safe to do so.</p> <p>Maintain and strengthen cooperater, partner and stakeholder relationships through clear communications and cooperation by showing increased sensitivity to the losses the community has experienced.</p> <p>Ensure sound financial stewardship through managing costs effectively while considering values at risk.</p>		
4. Operational Period Command Emphasis:		
Continue to implement the suppression repair plan and coordinate work assignments with assigned Resource Advisors.		
General Situational Awareness:		
Stay clear of heavy equipment operations and drive defensively.		
5. Site Safety Plan Required? Yes <input type="checkbox"/> No <input checked="" type="checkbox"/>		
Approved Site Safety Plan(s) Located at:		
6. Incident Action Plan (the items checked below are included in this Incident Action Plan):		
<input checked="" type="checkbox"/> ICS 202 <input type="checkbox"/> ICS 207 <input checked="" type="checkbox"/> ICS 203 <input type="checkbox"/> ICS 208 <input checked="" type="checkbox"/> ICS 204 <input checked="" type="checkbox"/> ICS 220 <input checked="" type="checkbox"/> ICS 205 <input type="checkbox"/> Map/Chart <input type="checkbox"/> ICS 205A <input checked="" type="checkbox"/> Weather Forecast/Tides/Currents <input checked="" type="checkbox"/> ICS 206	Other Attachments: <input checked="" type="checkbox"/> SAFETY MESSAGE <input checked="" type="checkbox"/> HUMAN RESOURCE MSG <input checked="" type="checkbox"/> COVID PRECAUTIONS & SCREENING TOOL <input checked="" type="checkbox"/> UNIT LOG	
7. Prepared by: MARGE HUTCHINSON Position/Title: PSC2	Signature: <i>Marge Hutchinson</i>	
8. Approved by Incident Commander:	Name: BOBBY SHINDELAR	Signature: <i>Bobby Shindelar</i>
ICS 202	IAP Page	Date/Time: 10/06/2020 2000

ORGANIZATION ASSIGNMENT LIST (ICS 203)

1. Incident Name:		2. Operational Period: DAY	
ARCHIE CREEK		Date/Time From: 10/07/2020 0700 WED	Date/Time To: 10/07/2020 1900 WED
3. Incident Commander(s) and Command Staff:		GROUND SUPPORT UNIT	MARK ANDERSON
INCIDENT COMMANDER	BOBBY SHINDELAR	COMMUNICATIONS UNIT	MISSY PARKER
DEPUTY		MEDICAL UNIT	EAMONN RYAN BONNIE GIBBONS
SAFETY OFFICER	TROY CORN JACK CATES	SECURITY UNIT	
INFORMATION OFFICER	MARY BEAN ROLAND EMETAZ	FOOD UNIT	JOHN SHACKELFORD
LIAISON OFFICER	SCOTT CRAWFORD		
HUMAN RESOURCE SPECIALIST	SUSIE MANEZES	7. Operations Section:	
		PLANNING OPS	MATT CASTLE
		OPERATION SECTION CHIEF	JEFF BOUSCHER TONY ENGEL
4. Agency/Organization Representative(s):			
Agency/Organization	Name		
UMPQUA NF - AA	ALICE CARLTON		
UMPQUA NF - AREP	K.C. BRIGGS SHERRI CHAMBERS	DIVISION/GROUP	ARCHIE CK - A/R/S LARRY LEACH
BLM - AA	HEATHER WHITMAN	DIVISION/GROUP	ARCHIE CK - F/H/K MATT KENNEDY
BLM - RESOURCE ADVISOR	JEFF MCENROE	DIVISION/GROUP	ARCHIE CK - N/Q MICHAEL JACKSON
BLM - AREP	CHRIS FOSTER	DIVISION/GROUP	ARCHIE CK - WRIGHT CREEK BOB HINDS
USFS - RESOURCE ADVISOR	RON MCMULLIN JED HANCOCK	BRANCH DIRECTOR	AARON ROWE
5. Planning Section:		DIVISION/GROUP	THIELSEN - NORTH DIAMOND RICHARD TINGLE
CHIEF	MARGE HUTCHINSON HOWARD JOHNSON (VIRTUAL)	DIVISION/GROUP	THIELSEN - A/M/P/W CODY ACORD CHRIS WHITE (T)
DEPUTY	ERIC BLACK		
RESOURCES UNIT	JILL JOHNSON	7b. Air Operations Branch:	
SITUATION UNIT	DAVE WISCHER	AIR OPS BRANCH DIRECTOR	TIM LYDA
DOCUMENTATION UNIT	JEFF DEARDORFF	AIR ATTACK SUPERVISOR	
DEMOBILIZATION UNIT	NATHAN JEFFRIES (VIRTUAL)	AIR SUPPORT SUPERVISOR	
FIRE BEHAVIOR ANALYST	DON STRAND		
TRAINING SPECIALIST	ERIKA DAVIS	8. Finance/Administration Section:	
GIS SPECIALIST	SHAWN BUSHNELL; BOB KIRK MATT STEWART (T)	CHIEF	CHERI FULLER
TECHNOLOGY SUPPORT SPECIALIST	GEORGE JENKINS TODD MALLERY	DEPUTY	BARB HAXBY
INCIDENT METEOROLOGIST	DAN BYRD	TIME UNIT	CAROL LONG
		PROCUREMENT UNIT	MARK BOHNET
		COST UNIT	STEVE CROW
		ICPI	ROB HECHINGER
6. Logistics Section:			
CHIEF	PETER FITZMAURICE		
DEPUTY			
SUPPLY UNIT	JOHN KAUPA		
FACILITIES UNIT	KEVIN HAUGHTON		
9. Prepared By:	Name: JILL JOHNSON	Position/Title: RESL	Signature: 
ICS 203	IAP Page	Date/Time: 10/06/2020 1720	



FIRE WEATHER FORECAST



FORECAST NO: 29
SHIFT DATE: Wednesday, Oct 7th, 2020
PREDICTION FOR: 0600-2000
UNIT: OR- Umpqua NF

INCIDENT NAME: Archie Creek/Thielsen
Incident Meteorologist – Dan Byrd
SIGNED: *Dan Byrd*

TIME AND DATE
FORECAST ISSUED: 2000 hrs. 10/6/20

WEATHER DISCUSSION: High pressure will continue to prevail over the area today with slightly cooler temperatures. Rh's will continue to be low, ranging from the upper teens in the upper elevations to around 30 percent over the western portions of the Archie Creek fire. The ridge will begin to weaken on Thursday, with isolated showers possible by Friday evening, out ahead of a strong Pacific storm system that will move into the region over the weekend. This storm system will produce widespread rainfall into Sunday. High pressure and warmer/drier conditions will return next week.

SKY/WEATHER TODAY: Sunny and slightly cooler. Some Haze/Smoke from other fires.

MAX TEMPERATURES / MIN RELATIVE HUMIDITY:

2000 FT: (Archie Creek) 75 to 82 degrees (Down 2-3) / 23 to 33 (Up 2-4%)
5000 FT: (Thielsen) 69 to 77 degrees (Down 2-3) / 18 to 28 (Up 2-4%)

EYE LEVEL WINDS:

Slope/Valley: Down slope/drainage 5 mph, becoming upslope from the south 5-10 mph late morning, then generally from the west and up drainage 5-10 G15 mph in the afternoon.
Ridges: Southwest 4 to 8 G12 mph.

Transport Wind: W 6 mph.

LAL: 1. **Chc of Wetting Rain (> or = to 0.25"):** 0%
Inversion: Weak at 1,000ft AGL early. **Afternoon Mixing Height:** 4,000ft AGL.

SKY/WEATHER TONIGHT: Clear skies. Patchy areas of fog possible in Canyons/Valleys.

MIN TEMPERATURES / MAX RELATIVE HUMIDITY

2000 FT: (Archie Creek) 52 to 58 degrees (Steady) / 70 to 80% (Up 20%)
5000 FT: (Thielsen) 38 to 45 degrees (Steady) / 60 to 70% (Up 20%)

EYE LEVEL WINDS:

Slope/Valley: Up slope and up drainage 4-7 mph early evening, becoming downslope and down drainage 4-8 mph overnight.
Ridges: Southwest 4 to 8 mph.

LAL: 1. **Chc of Wetting Rain (> OR = to 0.25"):** 0%
Inversion: Strong at 1000ft AGL.

2-5 Day Outlook, Thu-Sun (2000 Feet): * Pattern change late in the week, with increasing chances for rain*

Thursday: Partly Cloudy. **High Temp:** 62-72. **Min RH:** 35. **Wind:** Slope Driven.
Friday: Mostly Cloudy with a slight chance of showers. **High Temp:** 61-71 **Min RH:** 35. **Wind:** SW 10 G15.
Saturday: Cloudy with rain. **High Temp:** 45-55 **Min RH:** 75. **Wind:** SW 10 G20-25.
Sunday: Cloudy with light rain. **High Temp:** 44-54 **Min RH:** 60. **Wind:** W 10 G15.

Observations from midnight through 1800 PDT Tuesday, 10/6/20:

North Bank (1913ft): Temps 55F/77F, RH: 90%/41%, Pk Wind: NW 10 G13 mph.
Little River IRAWS (2100ft): Temps 56F/82F, RH: 76%/32%, Pk Wind: WSW 9 G13 mph.
Grandad (2900ft): Temps: 55F/86F, RH: 65%/21%, Pk Wind: SSW 6 G11 mph.
Lookout Mtn PRAWS (4739ft): Temps: 62F/77F, 45%/20%, Pk Wind: SSW 2 G3 mph.
Cinnamon (4834ft): Temps: 43F/83F, 66%/17%, Pk Wind: WSW 3 G9 mph.

FIRE BEHAVIOR FORECAST

FORECAST NUMBER: 27	TYPE OF FIRE: Wildland
FIRE NAME: Archie Creek / Thielsen	OPERATIONAL PERIOD: Oct. 7, 2020
DATE ISSUED: October 6, 2020	TIME ISSUED: 2000 Hours
UNIT: Umpqua NF	SIGNED: _____ Don Strand _____ Typed/printed:

INPUTS

WEATHER SUMMARY: See attached forecast
 Archie Creek: Temps 75-81, Min RH's 25%, Winds light and variable (Diurnal winds).
 Thielsen: Temps 73-83, Min RH's 18%, Winds light and variable (Diurnal winds).

OUTPUTS

FIRE BEHAVIOR

GENERAL: Fuels have continued to dry due to poor-moderate nighttime humidity recovery on mid and upper slopes along with afternoon low RH's. 1-hour and 10-hour fuels will remain receptive to ignition.
Archie Creek: During the afternoon, 1-hour fuel moistures minimums will be near 5% unshaded and 10- hour fuels will be near 6%. 1000- hour fuel moistures will continue to be near 14%. ERC-G values will continue to be near 51 today
Thielsen: In the afternoon, 1-hour fuels moistures will be near 5% unshaded, 10-hour fuels moistures will approach 7%, 1000-hour fuel moistures will remain near 16%. ERC-G values will continue to be near 43 today.

Overall, fire behavior will be minimal today although in places there will be limited smoldering and creeping. Some open flame may be present in larger down logs, old stumps, snags and in recent needle cast. As a result of slightly lower RH's, areas of dirty burn likely to experience creeping fire behavior with some open flame at times. In the event the fire has positioned itself below-down slope of heat-treated ladder fuels, slight chance for flare ups exist.

If fire starts outside containment lines, expect moderate rates of spread with potential for isolated torching.

Rate of spread and flame lengths are model outputs based on maximum values for the fuel models shown, with current fuel moistures in exposed locations on steep slope.

Fuel Model	Rate of Spread	Flame Length
Grass/Shrub (GS2)	8 chains/hour 9 feet/min	3 feet
Mature Timber (TU2 & TL5)	4 chains/hour 5feet/min	< 2 feet

In one hour, a spot fire would be approximately 1.4 acres in timber and 4 acres in grass/shrub.
 Probability of Ignition = 55%

AIR OPERATIONS: Light smokey haze today

SAFETY

Local Thresholds for Elevated Fire Behavior – Watch Outs - 20-foot winds > 13 mph, RH under 25%, Temperature over 85°, 1000-hour fuel moisture < 12%.

- Today on Archie Creek and Thielsen fires will meet RH thresholds in some locations.

Continue to watch for fire weakened trees and snags burning through and falling.

On steeper slopes, watch for rollouts.

With the days becoming shorter (losing 3 minutes/day), there's still potential in the right conditions for an increase of fire activity during the afternoon.

Safety Message

7 October 2020

INCIDENT: Archie Creek/Thielsen

OPERATIONAL PERIOD: 0700-1800

TOPICS:

MEDICAL RESOURCES

Take some time to familiarize yourself with medical resources on your division along with location and travel routes. Division Supervisors may move resources based on evolving or increased risk. Preplan actions needed should an issue arise within or near your work area.

PROPER MINDSET



A fixed mental attitude or disposition that predetermines a person's responses to and interpretations of situations.

What is the Mission at Archie Creek/Thielsen? While we had a quick ramp up to a month-long fire season, we are now well on the decline. Our mission here is repair and salvage, not firefighting. Change your focus to the tasks associated with such a mission and realize this is not a sprint, but rather a slow and methodical marathon. Proper mindset is key to an effective and safe operation.

“Don’t forget your COVID protocols and mitigations”

SAFETY OFFICER: Troy Corn, Jack Cates

Deliberate Risk Assessment-Hazard Summary

7 October 2020

Hazard	Mitigation	Post Risk
COVID Viral Transmission	Maintain awareness of health, perform self checks, maintain social distancing, wear face covering when within social distancing space (minimum 6'), report and isolate if not feeling well, implement Module of One and Hub/Spoke criteria to greatest extent possible, establish relationship with local public health, establish a schedule to clean all frequently touched surfaces, maintain cleanliness of own workspace, box meals by crew (no more than 20), single person distribution for meals and hydration (24 hour supply of hydration each day supplied with breakfast)	Low
Extraction Time	Identify medivac sites and helispots. Initiate ground transport to accident site. Identify EMT's from resources assigned to division. Provide line qualified paramedics to each division as available. Review IWI protocol to ensure familiarity. Utilize short haul in remote areas. Evaluate on-going need for repositioning medical personnel.	High
Steep Terrain/Gravity	Do not work crews above or below each other. Post lookouts for rolling material. Watch footing in loose soil, rock and around vegetation. Do not work below heavy equipment. Scout and identify travel routes. Establish LCES.	Moderate
Physical Factors	Maintain hydration schedule. Closely monitor work rate and implement rest periods. Maintain nutrition. Ensure adequate work/rest.	Moderate
Environmental Factors	Assign medical personnel to camp. Assess for known allergies and report to medical personnel. Obtain Bee Bopper/wasp spray and yellow jacket traps. Locate dumpsters/trash, food and feeding areas away from sleeping and assembly areas.	Moderate
Snags	Conduct on-going risk analysis of all work areas. Follow Hazard Tree Safety Guidelines (IRPG page 22). Ensure use of protective equipment.	High
Transportation	Signing of all incident roads that provide access to divisions. Daily updated travel plan maps. In local communities obey the posted speed limits. Use reader boards to control entry as needed. Identify and evaluate contingency and alternate escape and travel routes, implement controls as needed. Practice defensive driving. Maintain an awareness of wildlife, rock fall and heavy truck traffic. Reduce speed and increase following distance as needed.	High
Aircraft	Ensure all resources are a safe distance from all bucket and retardant drops. Establish LCES. Utilize air to ground primary radio channel. Reference IRPG (Safe aircraft operations pg. 56-58). Ensure IA resources have coordination with unassigned local air resources to provide deconfliction.	High
Public Interaction	Implement road and area closures in and adjacent to the perimeter.	Moderate
Heavy Equipment	Post lookouts around equipment work areas. Establish communications with equipment boss and operator. Do not work down slope from equipment. Familiarize crews with specialty equipment and processes.	High

Division/Group Assignment List (ICS 204 WF)
Controlled Unclassified Information//Basic

1. Incident Name:				3.		
ARCHIE CREEK				Branch:	Division/Group: A/R/S	
2. Operational Period: DAY						
Date/Time From: 10/07/2020 0700 WED		Date/Time To: 10/07/2020 1900 WED				
4. Operations Personnel						
OPERATIONS CHIEF		JEFF BOUSCHOR; TONY ENGEL MATT CASTLE		DIVISION/GROUP SUPERVISOR		LARRY LEACH
AIR ATTACK SUPERVISOR		TIM LYDA		SAFETY OFFICER		TROY CORN JACK CATES
5. Resources Assigned this Period						
Strike Team / Task Force / Resource Designator	LWD	Leader	Number Persons	Drop Off PT./Time	Pick Up PT./Time	
O-589.8 SOFR	10/18	CODY TRABER	1	ARCHIE CK ICP/0700	ARCHIE CK ICP/1900	
O-444 TFLD	10/07	NOLAN ROTH	1	ARCHIE CK ICP/0700	ARCHIE CK ICP/1900	
O-464 TFLD	10/10	JESSICA HILFERS	1	ARCHIE CK ICP/0700	ARCHIE CK ICP/1900	
O-453 HEQB (T)	10/08	ZACHARY FAULK	1	ARCHIE CK ICP/0700	ARCHIE CK ICP/1900	
O-96 FMOD STUFFLEBEAM	10/12	JAMES BORG	2	ARCHIE CK ICP/0700	ARCHIE CK ICP/1900	
C-62 HC2I SES AHTANUM	10/08	JASON HOERNER	20	ARCHIE CK ICP/0700	ARCHIE CK ICP/1900	
E-383 ENG3 OR-UPF	10/15	MARISSA DUARTE	5	ARCHIE CK ICP/0700	ARCHIE CK ICP/1900	
E-142 ENG4 J3 CONTRACTING	10/08	MESHEL RAD	3	ARCHIE CK ICP/0700	ARCHIE CK ICP/1900	
E-105 WTS2 IRELAND INC 46	10/10	CHRIS MCEWIN	1	ARCHIE CK ICP/0700	ARCHIE CK ICP/1900	
E-113 WTS2 PARTRIDGE	10/11	MICHELLE PARTRIDGE	1	ARCHIE CK ICP/0700	ARCHIE CK ICP/1900	
E-342 DOZ2 J B LOGGING	10/10		2	ARCHIE CK ICP/0700	ARCHIE CK ICP/1900	
E-118 SKD2 PACIFIC RIDGELINE FORESTRY	10/11	RONNIE ROSSITER	2	ARCHIE CK ICP/0700	ARCHIE CK ICP/1900	
E-312 EXCA WARREN PARTRIDGE CONTR	10/14	MICHELLE PARTRIDGE	1	ARCHIE CK ICP/0700	ARCHIE CK ICP/1900	
E-345 SKD2 MARK JONES TRUCKING	10/10		1	ARCHIE CK ICP/0700	ARCHIE CK ICP/1900	
E-319 CHIP PACIFIC RIDGELINE FORESTRY LLC	10/09		2	ARCHIE CK ICP/0700	ARCHIE CK ICP/1900	
O-10005 READ		MARK KEHOE	1	ARCHIE CK ICP/0700	ARCHIE CK ICP/1900	
8. Division/Group Communication Summary						
Function	Channel	RX Frequency N/W	RX Tone/NAC	TX Frequency N/W	TX Tone/NAC	Mode
TACTICAL	1	168.0500N	123.0	168.0500N	123.0	A
COMMAND	7	171.8250N	123.0	168.4250N	123.0	A
COMMAND	9	170.4500N	123.0	168.1000N	123.0	A
AIR TO GROUND	14	172.6750N		172.6750N		A
9. Prepared By (Resource Unit Leader)			Approved By (Planning Section Chief)		Date	Time
JILL JOHNSON			MARGE HUTCHINSON		10/06/2020	2000

Division/Group Assignment List (ICS 204 WF)
Controlled Unclassified Information//Basic

1. Incident Name:			3.			
ARCHIE CREEK			Branch:		Division/Group:	
2. Operational Period: DAY					A/R/S	
Date/Time From: 10/07/2020 0700 WED	Date/Time To: 10/07/2020 1900 WED					
4. Operations Personnel						
OPERATIONS CHIEF		JEFF BOUSCHOR; TONY ENGEL MATT CASTLE		DIVISION/GROUP SUPERVISOR		LARRY LEACH
AIR ATTACK SUPERVISOR		TIM LYDA		SAFETY OFFICER		TROY CORN JACK CATES
5. Resources Assigned this Period						
Strike Team / Task Force / Resource Designator		LWD	Leader	Number Persons	Drop Off PT./Time	Pick Up PT./Time
READ			WILLIAM KERWIN	1	ARCHIE CK ICP/0700	ARCHIE CK ICP/1900
READ			TOM MCNAMARA	1	ARCHIE CK ICP/0700	ARCHIE CK ICP/1900
O-10003 READ		10/07	JEFFREY MCENROE	1	ARCHIE CK ICP/0700	ARCHIE CK ICP/1900
O-93 ARCH (T)			KELSEY KNOX	1	ARCHIE CK ICP/0700	ARCHIE CK ICP/1900
E-175 AMBU AMR MEDIC 3		10/19	SEAN RAWSON	2	ARCHIE CK ICP/0700	ARCHIE CK ICP/1900
E-308 AMBU MEDIC 6		10/09	ADAM WHITE	2	ARCHIE CK ICP/0700	ARCHIE CK ICP/1900
O-331 EMTF		10/09	NICHOLAS EBLIN	1	ARCHIE CK ICP/0700	ARCHIE CK ICP/1900
O-430 REMS BEYOND THE EDGE		10/13	RAY STORM	4	ARCHIE CK ICP/0700	ARCHIE CK ICP/1900
6. Control Operations/Work Assignments:						
Task: Patrol and Mop-up as needed. Complete suppression repair per repair plan standards. Purpose: Continue to protect values and limit resource damage through suppression efforts.						
8. Division/Group Communication Summary						
Function	Channel	RX Frequency N/W	RX Tone/NAC	TX Frequency N/W	TX Tone/NAC	Mode
TACTICAL	1	168.0500N	123.0	168.0500N	123.0	A
COMMAND	7	171.8250N	123.0	168.4250N	123.0	A
COMMAND	9	170.4500N	123.0	168.1000N	123.0	A
AIR TO GROUND	14	172.6750N		172.6750N		A
9. Prepared By (Resource Unit Leader)			Approved By (Planning Section Chief)		Date	Time
JILL JOHNSON			MARGE HUTCHINSON		10/06/2020	2000

Division/Group Assignment List (ICS 204 WF)
 Controlled Unclassified Information//Basic

1. Incident Name:		3.	
ARCHIE CREEK		Branch:	Division/Group:
2. Operational Period: DAY			
Date/Time From: 10/07/2020 0700	WED	Date/Time To: 10/07/2020 1900	WED

4. Operations Personnel			
OPERATIONS CHIEF	JEFF BOUSCHOR; TONY ENGEL MATT CASTLE	DIVISION/GROUP SUPERVISOR	LARRY LEACH
AIR ATTACK SUPERVISOR	TIM LYDA	SAFETY OFFICER	TROY CORN JACK CATES

6. Control Operations/Work Assignments:
 End State: To eliminate the threat to improvements and timber values.

7. Special Instructions:

- Ensure all invasive species protocols for water handling are followed.

8. Division/Group Communication Summary

Function	Channel	RX Frequency N/W	RX Tone/NAC	TX Frequency N/W	TX Tone/NAC	Mode
TACTICAL	1	168.0500N	123.0	168.0500N	123.0	A
COMMAND	7	171.8250N	123.0	168.4250N	123.0	A
COMMAND	9	170.4500N	123.0	168.1000N	123.0	A
AIR TO GROUND	14	172.6750N		172.6750N		A

9. Prepared By (Resource Unit Leader)	Approved By (Planning Section Chief)	Date	Time
JILL JOHNSON	MARGE HUTCHINSON	10/06/2020	2000

Division/Group Assignment List (ICS 204 WF)
Controlled Unclassified Information//Basic

1. Incident Name:			3.			
ARCHIE CREEK			Branch:		Division/Group:	
2. Operational Period: DAY			F/H/K			
Date/Time From: 10/07/2020 0700 WED		Date/Time To: 10/07/2020 1900 WED				
4. Operations Personnel						
OPERATIONS CHIEF		JEFF BOUSCHOR; TONY ENGEL MATT CASTLE		DIVISION/GROUP SUPERVISOR		MATT KENNEDY
AIR ATTACK SUPERVISOR		TIM LYDA		SAFETY OFFICER		TROY CORN JACK CATES
5. Resources Assigned this Period						
Strike Team / Task Force / Resource Designator		LWD	Leader	Number Persons	Drop Off PT./Time	Pick Up PT./Time
O-589.8 SOFR		10/18	CODY TRABER	1	ARCHIE CK ICP/0700	ARCHIE CK ICP/1900
O-261 TFLD		10/08	JOHN S RYAN	1	ARCHIE CK ICP/0700	ARCHIE CK ICP/1900
O-314 FMOD C & K WILDLAND FIRE 6 (R&R 10/9-10/10)		10/08	RICKIE HUNT	2	ARCHIE CK ICP/0700	ARCHIE CK ICP/1900
C-61 HC2I PACIFIC OASIS WILDFIRE 9B		10/08	PACIFIC OASIS	18	ARCHIE CK ICP/0700	ARCHIE CK ICP/1900
E-239 ENG6 AMERICAN FIRE FIGHTING CO		10/09	MIKE RIDEOUT	3	ARCHIE CK ICP/0700	ARCHIE CK ICP/1900
E-151 SKG2 WYEAST FORESTRY MANAGEMENT		10/08	HARRY HERMAN BREEZY HERMAN	2	ARCHIE CK ICP/0700	ARCHIE CK ICP/1900
E-316 EXCA SANTUCCI RANCH TURF		10/10	BRAD SANTUCCI	2	ARCHIE CK ICP/0700	ARCHIE CK ICP/1900
E-320 CHIP HARRIS CREW 6 LLC		10/09	BUTCH SUNKLER	2	ARCHIE CK ICP/0700	ARCHIE CK ICP/1900
E-327 CHIP A&H FORESTRY, LLC		10/10	DREW STONEBERG	2	ARCHIE CK ICP/0700	ARCHIE CK ICP/1900
E-310 TUB GRINDER NEXTERRA		10/15	JOE NUPPBROCK	1	ARCHIE CK ICP/0700	ARCHIE CK ICP/1900
E-431 LDFR DEAN INNOVATIONS		01/27	ARTURO MICHEL	1	ARCHIE CK ICP/0700	ARCHIE CK ICP/1900
O-93 ARCH (T)		09/22	KELSEY KNOX	1	ARCHIE CK ICP/0700	ARCHIE CK ICP/1900
O-10003 READ		09/22	JEFFREY MCENROE	1	ARCHIE CK ICP/0700	ARCHIE CK ICP/1900
O-10005 READ		10/07	MARK KEHOE	1	ARCHIE CK ICP/0700	ARCHIE CK ICP/1900
READ		10/07	SUMMER CROSS	1	ARCHIE CK ICP/0700	ARCHIE CK ICP/1900
READ		10/07	NICK POPEJOY	1	ARCHIE CK ICP/0700	ARCHIE CK ICP/1900
READ		10/07	DARRIN WRIGHT	1	ARCHIE CK ICP/0700	ARCHIE CK ICP/1900
8. Division/Group Communication Summary						
Function	Channel	RX Frequency N/W	RX Tone/NAC	TX Frequency N/W	TX Tone/NAC	Mode
TACTICAL	2	168.2000N	123.0	168.2000N	123.0	A
COMMAND	10	169.5375N	123.0	164.7125N	123.0	A
COMMAND	13	170.5500N	103.5	164.8000N	192.8	A
AIR TO GROUND	14	172.6750N		172.6750N		A
9. Prepared By (Resource Unit Leader)			Approved By (Planning Section Chief)		Date	Time
JILL JOHNSON			MARGE HUTCHINSON		10/06/2020	2000

Division/Group Assignment List (ICS 204 WF)
Controlled Unclassified Information//Basic

1. Incident Name:				3.		
ARCHIE CREEK				Branch:	Division/Group: F/H/K	
2. Operational Period: DAY						
Date/Time From: 10/07/2020 0700 WED		Date/Time To: 10/07/2020 1900 WED				
4. Operations Personnel						
OPERATIONS CHIEF		JEFF BOUSCHOR; TONY ENGEL MATT CASTLE		DIVISION/GROUP SUPERVISOR		MATT KENNEDY
AIR ATTACK SUPERVISOR		TIM LYDA		SAFETY OFFICER		TROY CORN JACK CATES
5. Resources Assigned this Period						
Strike Team / Task Force / Resource Designator		LWD	Leader	Number Persons	Drop Off PT./Time	Pick Up PT./Time
E-286 AMBU MEDIC 4		10/09	ALBIN/PARSON	2	ARCHIE CK ICP/0700	ARCHIE CK ICP/1900
O-479 REMS ALBQ		10/10	ANDREW WEST	4	ARCHIE CK ICP/0700	ARCHIE CK ICP/1900
6. Control Operations/Work Assignments:						
<p>Task: Continue to secure lines, mop up and patrol to the extent necessary to ensure fire stays within established control features. Continue suppression repair per repair plan standards.</p> <p>Purpose: Protection of timber resources and improvements.</p> <p>End State: To eliminate the threat to improvements and timber values.</p>						
7. Special Instructions:						
<ul style="list-style-type: none"> • Identity IA resources. • All REAFs will check in and out of Division with DIVS. • During falling operations, ensure flaggers are in place when working on major roads. • Ensure all invasive species protocols for water handling are followed. • Logging operations and hauling off private is continuing. 						
8. Division/Group Communication Summary						
Function	Channel	RX Frequency N/W	RX Tone/NAC	TX Frequency N/W	TX Tone/NAC	Mode
TACTICAL	2	168.2000N	123.0	168.2000N	123.0	A
COMMAND	10	169.5375N	123.0	164.7125N	123.0	A
COMMAND	13	170.5500N	103.5	164.8000N	192.8	A
AIR TO GROUND	14	172.6750N		172.6750N		A
9. Prepared By (Resource Unit Leader)			Approved By (Planning Section Chief)		Date	Time
JILL JOHNSON			MARGE HUTCHINSON		10/06/2020	2000

Division/Group Assignment List (ICS 204 WF)
Controlled Unclassified Information//Basic

1. Incident Name:			3.			
ARCHIE CREEK			Branch:		Division/Group:	
2. Operational Period: DAY			N/Q			
Date/Time From: 10/07/2020 0700 WED		Date/Time To: 10/07/2020 1900 WED				
4. Operations Personnel						
OPERATIONS CHIEF		JEFF BOUSCHOR; TONY ENGEL MATT CASTLE		DIVISION/GROUP SUPERVISOR		MICHAEL JACKSON
AIR ATTACK SUPERVISOR		TIM LYDA		SAFETY OFFICER		TROY CORN JACK CATES
5. Resources Assigned this Period						
Strike Team / Task Force / Resource Designator		LWD	Leader	Number Persons	Drop Off PT./Time	Pick Up PT./Time
O-561 SOF1 (T)		10/15	JOHN FUGITT	1	ARCHIE CK ICP/0700	ARCHIE CK ICP/1900
O-515 TFLD		10/16	THADDEUS NIEBEL	1	ARCHIE CK ICP/0700	ARCHIE CK ICP/1900
O-409 HEQB		10/07	THOMAS FRANKLIN	1	ARCHIE CK ICP/0700	ARCHIE CK ICP/1900
O-454 HEQB (T)		10/08	JUSTIN HADWEN	1	ARCHIE CK ICP/0700	ARCHIE CK ICP/1900
O-291 FMOD FALLERS INCORPORATED		10/16	CALEB DENMAN	2	ARCHIE CK ICP/0700	ARCHIE CK ICP/1900
E-232 ENG4 WILDFIRE SERVICES 5		10/17	JASON SARE	3	ARCHIE CK ICP/0700	ARCHIE CK ICP/1900
E-353 ENG4 FOREST SERVICE		10/11	LUKE TALCOTT	8	ARCHIE CK ICP/0700	ARCHIE CK ICP/1900
E-365 ENG4 ORUPF ENGINE #14		10/13	IAN PROFETT	4	ARCHIE CK ICP/0700	ARCHIE CK ICP/1900
E-9 ENG6 FIRST STRIKE		10/09	ARMONDO OZUMA	2	ARCHIE CK ICP/0700	ARCHIE CK ICP/1900
E-2 WTS2 WILLIAM NASH 44		10/07	MARK NASH	1	ARCHIE CK ICP/0700	ARCHIE CK ICP/1900
E-109 WTS2 IRELAND INC 81		10/09	WAYNE ELLIGOTT	1	ARCHIE CK ICP/0700	ARCHIE CK ICP/1900
E-98 DOZ3 MARK JONES TRUCKING TD12		10/12	LARRY DAILY	2	ARCHIE CK ICP/0700	ARCHIE CK ICP/1900
E-244 DOZ3 PACIFIC RIDGELINE FORESTRY		10/17	TONY BALDWIN	2	ARCHIE CK ICP/0700	ARCHIE CK ICP/1900
E-313 EXCA OWENS FREIGHT LINES, INC		10/10	RHETT SMITH	2	ARCHIE CK ICP/0700	ARCHIE CK ICP/1900
E-337 EXCA MASTICATOR-BOOM MOUNTED,T3		10/11	DOUG STAFF	2	ARCHIE CK ICP/0700	ARCHIE CK ICP/1900
E-357 EXCA MARK JONES TRUCKING		10/12	MARK JONES	2	ARCHIE CK ICP/0700	ARCHIE CK ICP/1900
E-90 FEL2 MARK JONES TRUCKING		10/08	MARK GODWIN RICK BRADY	1	ARCHIE CK ICP/0700	ARCHIE CK ICP/1900
E-161 MAST JERRY SWEARINGEN CONSTR		10/14	JERRY SWEARINGEN	2	ARCHIE CK ICP/0700	ARCHIE CK ICP/1900
8. Division/Group Communication Summary						
Function	Channel	RX Frequency N/W	RX Tone/NAC	TX Frequency N/W	TX Tone/NAC	Mode
TACTICAL	5	166.7750N	123.0	166.7750N	123.0	A
COMMAND	8	173.5000N	123.0	168.5625N	123.0	A
COMMAND	9	170.4500N	123.0	168.1000N	123.0	A
AIR TO GROUND	14	172.6750N		172.6750N		A
9. Prepared By (Resource Unit Leader)			Approved By (Planning Section Chief)		Date	Time
JILL JOHNSON			MARGE HUTCHINSON		10/06/2020	2000

Division/Group Assignment List (ICS 204 WF)
Controlled Unclassified Information//Basic

1. Incident Name:				3.		
ARCHIE CREEK				Branch:	Division/Group: N/Q	
2. Operational Period: DAY						
Date/Time From: 10/07/2020 0700 WED		Date/Time To: 10/07/2020 1900 WED				
4. Operations Personnel						
OPERATIONS CHIEF		JEFF BOUSCHOR; TONY ENGEL MATT CASTLE		DIVISION/GROUP SUPERVISOR		MICHAEL JACKSON
AIR ATTACK SUPERVISOR		TIM LYDA		SAFETY OFFICER		TROY CORN JACK CATES
5. Resources Assigned this Period						
Strike Team / Task Force / Resource Designator		LWD	Leader	Number Persons	Drop Off PT./Time	Pick Up PT./Time
E-384 CHIP MISC - CHIPPER, T2 - 2392		10/15	JORDAN ALLBRITTON	2	ARCHIE CK ICP/0700	ARCHIE CK ICP/1900
E-385 CHIP PACIFIC RIDGLELINE		10/16	GARY WYLEY	1	ARCHIE CK ICP/0700	ARCHIE CK ICP/1900
E-386 CHIP SAYLOR CONSTRUCTION		10/15	JASON SAYLOR	1	ARCHIE CK ICP/0700	ARCHIE CK ICP/1900
E-49 LOG MARK JONES TRUCKING, INC.		10/06	RICK SMITH	1	ARCHIE CK ICP/0700	ARCHIE CK ICP/1900
E-48 LOG MARK JONES TRUCKING, INC.		10/10	JUSTIN CANNDEN	1	ARCHIE CK ICP/0700	ARCHIE CK ICP/1900
E-92 LDFR NW LOGGING INC		09/28	ROSS PAINTER	2	ARCHIE CK ICP/0700	ARCHIE CK ICP/1900
O-399 EMPF MEDIC 26- FIRELINE MEDIC		10/13	ANDREW BELCHER	1	ARCHIE CK ICP/0700	ARCHIE CK ICP/1900
O-382 REM DOUGLAS CO		10/19	NICK WECKS	4	ARCHIE CK ICP/0700	ARCHIE CK ICP/1900
E-29 AMBU MEDIC 1		10/06	HUDSON/PLUMMER	2	ARCHIE CK ICP/0700	ARCHIE CK ICP/1900
E-291 AMBU MEDIC 5		10/08	GREG EDWARDS	2	ARCHIE CK ICP/0700	ARCHIE CK ICP/1900
6. Control Operations/Work Assignments:						
Task: Continue to secure lines, mop up and patrol to the extent necessary to ensure fire stays within established control features. Continue suppression repair per repair plan standards. Open timber stands and mitigate hazard						
8. Division/Group Communication Summary						
Function	Channel	RX Frequency N/W	RX Tone/NAC	TX Frequency N/W	TX Tone/NAC	Mode
TACTICAL	5	166.7750N	123.0	166.7750N	123.0	A
COMMAND	8	173.5000N	123.0	168.5625N	123.0	A
COMMAND	9	170.4500N	123.0	168.1000N	123.0	A
AIR TO GROUND	14	172.6750N		172.6750N		A
9. Prepared By (Resource Unit Leader)			Approved By (Planning Section Chief)		Date	Time
JILL JOHNSON			MARGE HUTCHINSON		10/06/2020	2000

Division/Group Assignment List (ICS 204 WF)
Controlled Unclassified Information//Basic

1. Incident Name:		3.	
ARCHIE CREEK		Branch:	Division/Group:
2. Operational Period: DAY			
Date/Time From: 10/07/2020 0700	WED	Date/Time To: 10/07/2020 1900	WED
N/Q			

4. Operations Personnel			
OPERATIONS CHIEF	JEFF BOUSCHOR; TONY ENGEL MATT CASTLE	DIVISION/GROUP SUPERVISOR	MICHAEL JACKSON
AIR ATTACK SUPERVISOR	TIM LYDA	SAFETY OFFICER	TROY CORN JACK CATES

6. Control Operations/Work Assignments:
trees along 4712 road.
Purpose: Protection of timber resources and improvements. Allow current and future work forces to safely travel along the road corridors.
End State: To eliminate the threat to improvements and timber values. Roads are drivable and safe.

7. Special Instructions:

- Identity IA resources.
- All REAFs will check in and out of Division with DIVS.
- During falling operations, ensure flaggers are in place when working on major roads.
- Ensure all invasive species protocols for water handling are followed.
- Reduce road speeds across divisions and utilize tack channels to coordinate travel. Ensure when parking you are not obstructing travel routes.

8. Division/Group Communication Summary

Function	Channel	RX Frequency N/W	RX Tone/NAC	TX Frequency N/W	TX Tone/NAC	Mode
TACTICAL	5	166.7750N	123.0	166.7750N	123.0	A
COMMAND	8	173.5000N	123.0	168.5625N	123.0	A
COMMAND	9	170.4500N	123.0	168.1000N	123.0	A
AIR TO GROUND	14	172.6750N		172.6750N		A

9. Prepared By (Resource Unit Leader)	Approved By (Planning Section Chief)	Date	Time
JILL JOHNSON	MARGE HUTCHINSON	10/06/2020	2000

Division/Group Assignment List (ICS 204 WF)
Controlled Unclassified Information//Basic

1. Incident Name:			3.			
ARCHIE CREEK			Branch:		Division/Group:	
2. Operational Period: DAY			WRIGHT CREEK			
Date/Time From: 10/07/2020 0700 WED		Date/Time To: 10/07/2020 1900 WED				
4. Operations Personnel						
OPERATIONS CHIEF		JEFF BOUSCHOR; TONY ENGEL MATT CASTLE		DIVISION/GROUP SUPERVISOR		BOB HINDS
AIR ATTACK SUPERVISOR		TIM LYDA		SAFETY OFFICER		TROY CORN JACK CATES
5. Resources Assigned this Period						
Strike Team / Task Force / Resource Designator		LWD	Leader	Number Persons	Drop Off PT./Time	Pick Up PT./Time
O-488 SOFR		10/10	CHAD HYATT	1	ARCHIE CK ICP/0700	ARCHIE CK ICP/1900
O-550 SOFR (T)		10/15	RICHARD GILLASPY	1	ARCHIE CK ICP/0700	ARCHIE CK ICP/1900
O-524 TFLD		10/13	ERIC ANDERSON	1	ARCHIE CK ICP/0700	ARCHIE CK ICP/1900
O-598 HEQB		10/17	JOHN CAROON	1	ARCHIE CK ICP/0700	ARCHIE CK ICP/1900
O-607 HEQB (T)		10/17	KENNY LEMMONDS	1	ARCHIE CK ICP/0700	ARCHIE CK ICP/1900
O-14 FMOD TIMBER TIPPER (R&R 10/7-10/8)		10/06	C. ABAUGH/G. REDDEKOPP	2	ARCHIE CK ICP/0700	ARCHIE CK ICP/1900
O-313 FMOD C & K WILDLAND FIRE (R&R 10/8-10/9)		10/07	JIMMY THOMAS	2	ARCHIE CK ICP/0700	ARCHIE CK ICP/1900
O-361 FMOD TIMBER TIPPER		10/19	RAY SCHLATTER	2	ARCHIE CK ICP/0700	ARCHIE CK ICP/1900
E-317 EXCA T1 MARK JONES TRUCKING		10/10	JOHN JONES	1	ARCHIE CK ICP/0700	ARCHIE CK ICP/1900
E-318 EXCA URE OUTDOORS		10/17	DON GILBERT	1	ARCHIE CK ICP/0700	ARCHIE CK ICP/1900
E-336 EXCA T2 JUSTIN PITTS TRUCKING		10/11	KEN OGDEN	2	ARCHIE CK ICP/0700	ARCHIE CK ICP/1900
E-93 LOGL KEVIN SAYLOR LOG LOADER		10/11	KEVIN SAYLOR	1	ARCHIE CK ICP/0700	ARCHIE CK ICP/1900
E-329 LDFR MILLER TIMBER SVCS 280		10/10	KYLE SWANK	1	ARCHIE CK ICP/0700	ARCHIE CK ICP/1900
E-346 LDFR J&D LOGGING & CONTR		10/13	COLBY BRADFORD	2	ARCHIE CK ICP/0700	ARCHIE CK ICP/1900
E-347 LDFR J&D LOGGING & CONTR		10/13	JOHN SANOWSKI	2	ARCHIE CK ICP/0700	ARCHIE CK ICP/1900
E-8191 LDFR MARK JONES TRUCKING		10/07			ARCHIE CK ICP/0700	ARCHIE CK ICP/1900
E-341 SKD1 MARK JONES TRUCKING		10/10	SABASTIAN FLORENCE	2	ARCHIE CK ICP/0700	ARCHIE CK ICP/1900
E-360 SKD1 WARREN PARTRIDGE		10/15	WARREN PARTRIDGE	1	ARCHIE CK ICP/0700	ARCHIE CK ICP/1900
E-100 FEL1 PONSEE HARVESTER MILLER		10/18	TREVEN OKES	2	ARCHIE CK ICP/0700	ARCHIE CK ICP/1900
8. Division/Group Communication Summary						
Function	Channel	RX Frequency N/W	RX Tone/NAC	TX Frequency N/W	TX Tone/NAC	Mode
TACTICAL	3	168.6000N	123.0	168.6000N	123.0	A
COMMAND	7	171.8250N	123.0	168.4250N	123.0	A
COMMAND	10	169.5375N	123.0	164.7125N	123.0	A
AIR TO GROUND	14	172.6750N		172.6750N		A
9. Prepared By (Resource Unit Leader)			Approved By (Planning Section Chief)		Date	Time
JILL JOHNSON			MARGE HUTCHINSON		10/06/2020	2000

Division/Group Assignment List (ICS 204 WF)
Controlled Unclassified Information//Basic

1. Incident Name:				3.		
ARCHIE CREEK				Branch:	Division/Group: WRIGHT CREEK	
2. Operational Period: DAY						
Date/Time From: 10/07/2020 0700 WED		Date/Time To: 10/07/2020 1900 WED				
4. Operations Personnel						
OPERATIONS CHIEF		JEFF BOUSCHOR; TONY ENGEL MATT CASTLE		DIVISION/GROUP SUPERVISOR		BOB HINDS
AIR ATTACK SUPERVISOR		TIM LYDA		SAFETY OFFICER		TROY CORN JACK CATES
5. Resources Assigned this Period						
Strike Team / Task Force / Resource Designator		LWD	Leader	Number Persons	Drop Off PT./Time	Pick Up PT./Time
E-8200 TDMP BELLOIR TRUCKING INC		10/11	RANDY BELLOIR	1	ARCHIE CK ICP/0700	ARCHIE CK ICP/1900
E-8201 TDMP MARSHALL TRUCKING		10/11	JAMES ROARK	1	ARCHIE CK ICP/0700	ARCHIE CK ICP/1900
O-496 EMPF		10/13	CODY BENNETT	1	ARCHIE CK ICP/0700	ARCHIE CK ICP/1900
6. Control Operations/Work Assignments:						
<p>Task: Open timber stands and mitigate hazard trees along roads in Wright Creek Drainage and along 0150 road. Purpose: Allow current and future work forces to safely travel along the road corridors. End State: Roads are drivable and safe.</p>						
7. Special Instructions:						
<ul style="list-style-type: none"> • Identity IA resources. • All REAFs will check in and out of Division with DIVS. • During falling operations, ensure flaggers are in place when working on major roads. • Ensure all invasive species protocols for water handling are followed. • Logging operations and hauling off private is continuing. • Stay out of marked archaeological site. 						
8. Division/Group Communication Summary						
Function	Channel	RX Frequency N/W	RX Tone/NAC	TX Frequency N/W	TX Tone/NAC	Mode
TACTICAL	3	168.6000N	123.0	168.6000N	123.0	A
COMMAND	7	171.8250N	123.0	168.4250N	123.0	A
COMMAND	10	169.5375N	123.0	164.7125N	123.0	A
AIR TO GROUND	14	172.6750N		172.6750N		A
9. Prepared By (Resource Unit Leader)			Approved By (Planning Section Chief)		Date	Time
JILL JOHNSON			MARGE HUTCHINSON		10/06/2020	2000

Division/Group Assignment List (ICS 204 WF)
Controlled Unclassified Information//Basic

1. Incident Name:			3.			
ARCHIE CREEK			Branch:		Division/Group:	
2. Operational Period: DAY			DFPA W/T/D/E			
Date/Time From: 10/07/2020 0700 WED		Date/Time To: 10/07/2020 1900 WED				
4. Operations Personnel						
OPERATIONS CHIEF				DIVISION/GROUP SUPERVISOR PAUL RITTER (541) 580-7149		
SAFETY OFFICER						
5. Resources Assigned this Period						
Strike Team / Task Force / Resource Designator		LWD	Leader	Number Persons	Drop Off PT./Time	Pick Up PT./Time
TFLD #15-01			K. SMITH (541)530-0477	2		
HEQB			B.LEDBETTER (541)643-2208			
TFLD #11-15			T.BABIKOFF (541)671-3363	2		
FFT2			C. JAYNES (541)643-0005			
HEQB #89-88			J. BROWN (541)580-5117	2		
HEQB			J. MENDOZA (541)817-9458			
DIVS			B. PETTIBONE (541)733-6188	1		
TFLD			I. HULL	1		
HEQB			H. WILDING (541)643-8421	1		
T6 ODF COLUMBIA CITY			SWENSON (541)580-6596	2		
T6 ODF JOHN DAY			DUNCAN (541)419-0063	3		
T6 ODF PHILOMATH			ORME (541)915-0830	2		
T6 ODF ASTORIA			LIGHTY (541)637-8380	2		
PARKHURST EXCAVATOR				1		
SCOTT MARSHALL EXCAVATOR				1		
BENZEL DOZER				1		
FIRST STRIKE ENVIRONMENTAL				20		
FALLER			DUB JONES	1		
FALLER			LEON CHAPMAN	1		
DFPA DOZER #22						
8. Division/Group Communication Summary						
Function	Channel	RX Frequency N/W	RX Tone/NAC	TX Frequency N/W	TX Tone/NAC	Mode
COMMAND	11	151.1600N	146.2	159.4725N	146.2	A
TACTICAL	6	151.3400N	156.7	151.3400N	156.7	A
AIR TO GROUND	14	172.6750N		172.6750N		A
AIR TO GROUND	15	172.4625N		172.4625N		A
9. Prepared By (Resource Unit Leader)			Approved By (Planning Section Chief)		Date	Time
JESSICA VALDEZ			MARG OLSON		10/06/2020	2235

Division/Group Assignment List (ICS 204 WF)
Controlled Unclassified Information//Basic

1. Incident Name:			3.			
ARCHIE CREEK			Branch:		Division/Group:	
2. Operational Period: DAY			DFPA W/T/D/E			
Date/Time From: 10/07/2020 0700 WED		Date/Time To: 10/07/2020 1900 WED				
4. Operations Personnel						
OPERATIONS CHIEF				DIVISION/GROUP SUPERVISOR		PAUL RITTER (541) 580-7149
SAFETY OFFICER						
5. Resources Assigned this Period						
Strike Team / Task Force / Resource Designator		LWD	Leader	Number Persons	Drop Off PT./Time	Pick Up PT./Time
DZOP			DOOLITTLE (541)530-0276	1		
HEQB DFPA #52			HUNTER (541)643-7121	1		
6. Control Operations/Work Assignments:						
<ul style="list-style-type: none"> • Monitor and patrol lines • Backhaul equipment no longer needed • Identify and complete needed suppression repair on private lands • Coordinate and communicate with federal resources and IMT 						
7. Special Instructions:						
8. Division/Group Communication Summary						
Function	Channel	RX Frequency N/W	RX Tone/NAC	TX Frequency N/W	TX Tone/NAC	Mode
COMMAND	11	151.1600N	146.2	159.4725N	146.2	A
TACTICAL	6	151.3400N	156.7	151.3400N	156.7	A
AIR TO GROUND	14	172.6750N		172.6750N		A
AIR TO GROUND	15	172.4625N		172.4625N		A
9. Prepared By (Resource Unit Leader)			Approved By (Planning Section Chief)		Date	Time
JESSICA VALDEZ			MARG OLSON		10/06/2020	2235

Division/Group Assignment List (ICS 204 WF)
Controlled Unclassified Information//Basic

1. Incident Name:				3.		
THIELSEN				Branch: THIELSEN	Division/Group: A/M/P/W	
2. Operational Period: DAY						
Date/Time From: 10/07/2020 0700 WED		Date/Time To: 10/07/2020 1900 WED				
4. Operations Personnel						
OPERATIONS CHIEF		JEREMY BRAND		BRANCH DIRECTOR		AARON ROWE
DIVISION/GROUP SUPERVISOR		CODY ACORD CHRIS WHITE (T)		SAFETY OFFICER		TROY CORN JACK CATES
5. Resources Assigned this Period						
Strike Team / Task Force / Resource Designator	LWD	Leader	Number Persons	Drop Off PT./Time	Pick Up PT./Time	
O-549 SOF1	10/14	IVAN CUPP	1	THIELSEN SPIKE/0700	THIELSEN SPIKE/1900	
O-589.2 SOF2	10/18	TODD CAMM	1	THIELSEN SPIKE/0700	THIELSEN SPIKE/1900	
O-186 TFLD	10/16	LEE MICHAEL NELSON	1	THIELSEN SPIKE/0700	THIELSEN SPIKE/1900	
O-95 HEQB (T)	10/11	DUSTIN APPLETON	1	THIELSEN SPIKE/0700	THIELSEN SPIKE/1900	
O-96 HEQB	10/11	JAMES LINDSAY	1	THIELSEN SPIKE/0700	THIELSEN SPIKE/1900	
O-125 HEQB (T)	10/20	MAX LEIDENFROST	1	THIELSEN SPIKE/0700	THIELSEN SPIKE/1900	
C-6 HC2 PONDEROSA REFORESTATION	10/07	ANSELMO NARENO	20	THIELSEN SPIKE/0700	THIELSEN SPIKE/1900	
C-11 HC2 MOSQUEDA REFORESTATION	10/09	SAUL EQUIHUA	20	THIELSEN SPIKE/0700	THIELSEN SPIKE/1900	
E-23 ENG6 BIG BEAR LOGGING	10/07	TOM FULLERTON	3	THIELSEN SPIKE/0700	THIELSEN SPIKE/1900	
E-223 ENG6 LONE WOLF WILDFIRE 42	10/08	DAVE SARANTO	3	THIELSEN SPIKE/0700	THIELSEN SPIKE/1900	
E-247 ENG6 JR WILDFIRE 07	10/08	JAMES RETTSTATT	3	THIELSEN SPIKE/0700	THIELSEN SPIKE/1900	
E-52 ENG6 CONTRACT WATER WAGON	10/09	MUSIA MICHAEL	2	THIELSEN SPIKE/0700	THIELSEN SPIKE/1900	
E-8 DOZ3 BOB MURRAY LOGGING	10/09	GARCIA UNDERWOOD	1	THIELSEN SPIKE/0700	THIELSEN SPIKE/1900	
E-54 EXCA B ROCK READY	10/16	GLEN ROBINSON	1	THIELSEN SPIKE/0700	THIELSEN SPIKE/1900	
E-147 EXCA SCOTT MARSHALL TRUCKING	10/13	SCOTT MARSHALL	1	THIELSEN SPIKE/0700	THIELSEN SPIKE/1900	
E-45 FEL1 MARK JONES TRUCKING	10/08	TYLER LARCEY	2	THIELSEN SPIKE/0700	THIELSEN SPIKE/1900	
E-335 GRINDER		RAY BREWINGTON	2	THIELSEN SPIKE/0700	THIELSEN SPIKE/1900	
8. Division/Group Communication Summary						
Function	Channel	RX Frequency N/W	RX Tone/NAC	TX Frequency N/W	TX Tone/NAC	Mode
COMMAND	1	171.4250N	103.5	166.0000N	192.8	A
TACTICAL	5	168.2625N	103.5	168.2625N	103.5	A
AIR TO GROUND	13	171.1125N		171.1125N		A
AIR TO GROUND	14	173.8625N		173.8625N		A
AIR GUARD	16	168.6250N		168.6250N	110.9	A
9. Prepared By (Resource Unit Leader)			Approved By (Planning Section Chief)		Date	Time
JILL JOHNSON			MARGE HUTCHINSON		10/06/2020	2000

Division/Group Assignment List (ICS 204 WF)
Controlled Unclassified Information//Basic

1. Incident Name:				3.			
THIELSEN				Branch: THIELSEN		Division/Group: A/M/P/W	
2. Operational Period: DAY							
Date/Time From: 10/07/2020 0700		Date/Time To: 10/07/2020 1900					
WED		WED					
4. Operations Personnel							
OPERATIONS CHIEF		JEREMY BRAND		BRANCH DIRECTOR		AARON ROWE	
DIVISION/GROUP SUPERVISOR		CODY ACORD CHRIS WHITE (T)		SAFETY OFFICER		TROY CORN JACK CATES	
5. Resources Assigned this Period							
Strike Team / Task Force / Resource Designator		LWD	Leader	Number Persons	Drop Off PT./Time	Pick Up PT./Time	
O-6 READ		10/10	JEDIDIAH HANCOCK	1	THIELSEN SPIKE/0700	THIELSEN SPIKE/1900	
O-134 REAF		10/11	SOPHIA KIM	1	THIELSEN SPIKE/0700	THIELSEN SPIKE/1900	
O-59 EMTP		10/09	MATTHEW STIVERS	1	THIELSEN SPIKE/0700	THIELSEN SPIKE/1900	
O-157 EMTF		10/13	DALE HOOVER	1	THIELSEN SPIKE/0700	THIELSEN SPIKE/1900	
O-175 EMTF		10/15	CAYLA FORSYTHE	1	THIELSEN SPIKE/0700	THIELSEN SPIKE/1900	
O-328 EMPF		10/11		1			
E-71 AMBU AMBO 1571		10/12		1	THIELSEN SPIKE/0700	THIELSEN SPIKE/1900	
E-72 AMBU MED TRANSPORT		10/10	CHRIS ARVIDSON	2	THIELSEN SPIKE/0700	THIELSEN SPIKE/1900	
6. Control Operations/Work Assignments:							
Task: Patrol and Mop-up as needed. Complete suppression repair per repair plan standards.							
Purpose: Continue to protect values and limit resource damage through suppression efforts.							
End State: To eliminate the threat to values at risk.							
7. Special Instructions:							
8. Division/Group Communication Summary							
Function	Channel	RX Frequency N/W	RX Tone/NAC	TX Frequency N/W	TX Tone/NAC	Mode	
COMMAND	1	171.4250N	103.5	166.0000N	192.8	A	
TACTICAL	5	168.2625N	103.5	168.2625N	103.5	A	
AIR TO GROUND	13	171.1125N		171.1125N		A	
AIR TO GROUND	14	173.8625N		173.8625N		A	
AIR GUARD	16	168.6250N		168.6250N	110.9	A	
9. Prepared By (Resource Unit Leader)				Approved By (Planning Section Chief)		Date	Time
JILL JOHNSON				MARGE HUTCHINSON		10/06/2020	2000

Division/Group Assignment List (ICS 204 WF)
Controlled Unclassified Information//Basic

1. Incident Name:				3.		
THIELSEN				Branch: THIELSEN	Division/Group: NORTH DIAMOND	
2. Operational Period: DAY						
Date/Time From: 10/07/2020 0700 WED		Date/Time To: 10/07/2020 1900 WED				
4. Operations Personnel						
OPERATIONS CHIEF		JEFF BOUSCHOR; TONY ENGEL MATT CASTLE		BRANCH DIRECTOR		AARON ROWE
DIVISION/GROUP SUPERVISOR		RICHARD TINGLE		SAFETY OFFICER		TROY CORN JACK CATES
5. Resources Assigned this Period						
Strike Team / Task Force / Resource Designator	LWD	Leader	Number Persons	Drop Off PT./Time	Pick Up PT./Time	
O-549 SOF1	10/14	IVAN CUPP	1	THIELSEN SPIKE/0700	THIELSEN SPIKE/1900	
O-589.2 SOF2	10/18	TODD CAMM	1	THIELSEN SPIKE/0700	THIELSEN SPIKE/1900	
O- TFLD	10/16	JED GETMAN	1	THIELSEN SPIKE/0700	THIELSEN SPIKE/1900	
O-19 TFLD	10/10	BRIAN SMITH	1	THIELSEN SPIKE/0700	THIELSEN SPIKE/1900	
O-18 HEQB	10/11	MICHAEL KARR	1	THIELSEN SPIKE/0700	THIELSEN SPIKE/1900	
O-79 FMOD GOODSON LOGGING	10/18	NATHANIEL ZELLER	2	THIELSEN SPIKE/0700	THIELSEN SPIKE/1900	
O-85 FMOD C & K WILDLAND FIRE	10/08	SHAWN WILLIS	2	THIELSEN SPIKE/0700	THIELSEN SPIKE/1900	
E-9000 ENG3 UMPQUA 334	10/09	TOMMY DAVIS	8	THIELSEN SPIKE/0700	THIELSEN SPIKE/1900	
E-2 WTS2 SCOTT MARSHALL TRUCKING	10/13	JEREMIAH DIERDORF	1	THIELSEN SPIKE/0700	THIELSEN SPIKE/1900	
E-97 WTT2 ALL WET WATER TRUCKING	10/18	RICK BASSONETT	1	THIELSEN SPIKE/0700	THIELSEN SPIKE/1900	
E-35 DOZ3 PJF INC	10/13	AARON FENTER	2	THIELSEN SPIKE/0700	THIELSEN SPIKE/1900	
E-149 DOZ1 MARK JONES	10/14	KEEGAN COOPER	2	THIELSEN SPIKE/0700	THIELSEN SPIKE/1900	
E-55 CHIP VALLEY TIMBER INC.	10/09		2	THIELSEN SPIKE/0700	THIELSEN SPIKE/1900	
E-29 EXCA DENNY POTTER LOGGING	10/09	RAY ADAMS	2	THIELSEN SPIKE/0700	THIELSEN SPIKE/1900	
E-144 EXCA FS 1990**	10/13			THIELSEN SPIKE/0700	THIELSEN SPIKE/1900	
E-148 EXCA SHAD STUFFLEBEAM	10/13	JOE LILLIE	1	THIELSEN SPIKE/0700	THIELSEN SPIKE/1900	
E-314 EXCA TABLE MOUNTAIN FORESTRY	10/14	MICHELE PARTRIDGE	1	THIELSEN SPIKE/0700	THIELSEN SPIKE/1900	
E-315 EXCA TABLE ROCK FORESTRY	10/10	ART LACEY	2	THIELSEN SPIKE/0700	THIELSEN SPIKE/1900	
8. Division/Group Communication Summary						
Function	Channel	RX Frequency N/W	RX Tone/NAC	TX Frequency N/W	TX Tone/NAC	Mode
COMMAND	1	171.4250	103.5	166.0000	192.8	
TACTICAL	4	169.1250	103.5	169.1250	103.5	
AIR TO GROUND	13	171.1125N		171.1125N		A
AIR TO GROUND	14	173.8625N		173.8625N		A
AIR GUARD	16	168.6250N		168.6250N	110.9	A
9. Prepared By (Resource Unit Leader)			Approved By (Planning Section Chief)		Date	Time
JILL JOHNSON			MARGE HUTCHINSON		10/06/2020	2000

Division/Group Assignment List (ICS 204 WF)
Controlled Unclassified Information//Basic

1. Incident Name:				3.		
THIELSEN				Branch: THIELSEN	Division/Group: NORTH DIAMOND	
2. Operational Period: DAY						
Date/Time From: 10/07/2020 0700 WED		Date/Time To: 10/07/2020 1900 WED				
4. Operations Personnel						
OPERATIONS CHIEF		JEFF BOUSCHOR; TONY ENGEL MATT CASTLE		BRANCH DIRECTOR		AARON ROWE
DIVISION/GROUP SUPERVISOR		RICHARD TINGLE		SAFETY OFFICER		TROY CORN JACK CATES
5. Resources Assigned this Period						
Strike Team / Task Force / Resource Designator	LWD	Leader	Number Persons	Drop Off PT./Time	Pick Up PT./Time	
E-362 EXCA	10/15		2	THIELSEN SPIKE/0700	THIELSEN SPIKE/1900	
E-44 FEL2 RUDE LOGGING/ FEL2	10/16	STEVE KOWING	2	THIELSEN SPIKE/0700	THIELSEN SPIKE/1900	
E-156 FEL1 RUDE LOGGING	10/15	SHAWN SKIDGEL	1	THIELSEN SPIKE/0700	THIELSEN SPIKE/1900	
E-132 TUB GRINDER LANE FORESTRY	10/12	JOE TURNEY	1	THIELSEN SPIKE/0700	THIELSEN SPIKE/1900	
E-109 SKD1 MARK JONES TRUCKING	10/10		2	THIELSEN SPIKE/0700	THIELSEN SPIKE/1900	
E-151 SKD2 DAMON LOGGING	10/15	DAN KOMNING	2	THIELSEN SPIKE/0700	THIELSEN SPIKE/1900	
E-152 SKD2 MID VALLEY RANCH	10/14	BRAD HELLENTHAL	2	THIELSEN SPIKE/0700	THIELSEN SPIKE/1900	
E-145 LDFR FS 6304**	10/13			THIELSEN SPIKE/0700	THIELSEN SPIKE/1900	
E-153 LDFR LANE FOREST PRODUCTS	10/14	DARREL BOOTS	1	THIELSEN SPIKE/0700	THIELSEN SPIKE/1900	
E-42 LOG SELF LOADER MARK JONES	10/15	WILLIAM HOOVER	1	THIELSEN SPIKE/0700	THIELSEN SPIKE/1900	
E-43 LOG SELF LOADER MARK JONES	10/06	KEN HALE	2	THIELSEN SPIKE/0700	THIELSEN SPIKE/1900	
E-138 TDMP FS 2943**	10/13		1	THIELSEN SPIKE/0700	THIELSEN SPIKE/1900	
E-139 TDMP FS 4018**	10/13		1	THIELSEN SPIKE/0700	THIELSEN SPIKE/1900	
E-140 TDMP FS 6303**	10/13		1	THIELSEN SPIKE/0700	THIELSEN SPIKE/1900	
E-154 TDMP DEAN INNOVATIONS,	10/14	NICK ROPKINS	1	THIELSEN SPIKE/0700	THIELSEN SPIKE/1900	
E-155 TDMP DEAN INNOVATIONS	10/14	BRANDEN ROBERTS	1	THIELSEN SPIKE/0700	THIELSEN SPIKE/1900	
E-434 TDMP DEAN INNOVATIONS	10/20	MARSHALL MILLS	1	THIELSEN SPIKE/0700	THIELSEN SPIKE/1900	
E-141 TCTL FS 4020 TILT BED TRANSPORT**	10/13			THIELSEN SPIKE/0700	THIELSEN SPIKE/1900	
8. Division/Group Communication Summary						
Function	Channel	RX Frequency N/W	RX Tone/NAC	TX Frequency N/W	TX Tone/NAC	Mode
COMMAND	1	171.4250	103.5	166.0000	192.8	
TACTICAL	4	169.1250	103.5	169.1250	103.5	
AIR TO GROUND	13	171.1125N		171.1125N		A
AIR TO GROUND	14	173.8625N		173.8625N		A
AIR GUARD	16	168.6250N		168.6250N	110.9	A
9. Prepared By (Resource Unit Leader)			Approved By (Planning Section Chief)		Date	Time
JILL JOHNSON			MARGE HUTCHINSON		10/06/2020	2000

Division/Group Assignment List (ICS 204 WF)
Controlled Unclassified Information//Basic

1. Incident Name:			3.			
THIELSEN			Branch:		Division/Group:	
2. Operational Period: DAY			THIELSEN		NORTH DIAMOND	
Date/Time From: 10/07/2020 0700	WED	Date/Time To: 10/07/2020 1900				
4. Operations Personnel						
OPERATIONS CHIEF		JEFF BOUSCHOR; TONY ENGEL MATT CASTLE		BRANCH DIRECTOR		AARON ROWE
DIVISION/GROUP SUPERVISOR		RICHARD TINGLE		SAFETY OFFICER		TROY CORN JACK CATES
5. Resources Assigned this Period						
Strike Team / Task Force / Resource Designator	LWD	Leader	Number Persons	Drop Off PT./Time	Pick Up PT./Time	
E-142 TCTL FS PUP TRAILER**	10/13			THIELSEN SPIKE/0700	THIELSEN SPIKE/1900	
E-143 GRD GRADER FS 6302**	10/13			THIELSEN SPIKE/0700	THIELSEN SPIKE/1900	
O-149 REAF (T)	10/12	ERIC MICHAEL HELEBRANT	1	THIELSEN SPIKE/0700	THIELSEN SPIKE/1900	
6. Control Operations/Work Assignments:						
<p>Task: Remove all hazard trees w/in 150' of 005 road. Purpose: Protect life and property from fire weakened trees. End State: Hazardous trees are removed from roadways to create future contingency lines for Diamond Lake Community.</p>						
7. Special Instructions:						
8. Division/Group Communication Summary						
Function	Channel	RX Frequency N/W	RX Tone/NAC	TX Frequency N/W	TX Tone/NAC	Mode
COMMAND	1	171.4250	103.5	166.0000	192.8	
TACTICAL	4	169.1250	103.5	169.1250	103.5	
AIR TO GROUND	13	171.1125N		171.1125N		A
AIR TO GROUND	14	173.8625N		173.8625N		A
AIR GUARD	16	168.6250N		168.6250N	110.9	A
9. Prepared By (Resource Unit Leader)			Approved By (Planning Section Chief)		Date	Time
JILL JOHNSON			MARGE HUTCHINSON		10/06/2020	2000

AIR OPERATIONS SUMMARY 220		Prepared By: Tim Lyda	Prepared: 10/06/2020		Prepared Time: 1600		
1. INCIDENT NAME: ARCHIE CREEK		2. OPERATIONAL PERIOD 10/07/2020	START TIME: 0800	END TIME: 2000	SUNRISE: 0718	SUNSET: 1842	Pumpkin: 1912

3. REMARKS (Safety Notes, Hazards, Air Operations Special Equipment, etc.). <p style="text-align: center;"><u>AVIATION SAFETY IS A TEAM EFFORT</u></p> <p style="text-align: center;"><i>ODOT WILL BE FLYING INSIDE THE TFR FROM GLIDE TO STEAMBOAT ALONG THE 138 CORRIDOR FROM 1100 TO 1400</i></p> <p style="text-align: center;"><i>PACIFIC POWER WILL BE FLYING THEIR DRONE UP STEAMBOAT CREEK ALONG THE POWER LINES WILL BE MONITORING THE RADIO</i></p>		4. READY ALERT AIRCRAFT: <p style="text-align: center;">IA: TBD</p> <p style="text-align: center;">3JR - Short Haul Capable Staged at Sunriver, OR</p> <p style="text-align: center;">Order through Communications/Dispatch</p> <p style="text-align: center;">See Medical Plan in the IAP</p> <p style="text-align: center;">Life Flight @ 911</p>	5. TFR: 0/2507 (A-43) Freq: 126.4500 Exp: 10/18/20 0400 UTC Polygon (20NM x 42NM) 8,000' MSL Daylight Hrs
--	--	--	--

6. PERSONNEL	NAME	PHONE #	7. FREQUENCIES	Freq	Tone	8A. FIXED-WING Ordering
ASGS	Tim Lyda	541-761-2676	A/A Primary (A-9)	126.4500		AIRTANKERS/LEAD PLANES/SEATS: ATGS order through Dispatch
			A/A Secondary (A-10)	127.3500		
HEBM	Kristina Sheppard	541-821-2023	A/G Primary (A-8)	172.6750		8B. Aerial Supervision / Personnel / Location AIR ATTACK Platforms: Order through Dispatch, OR-RIC
			A/G Secondary (A-7)	172.4625		
USFS UAO	Jim Dotson	307-413-2024	ODF IA A/A(Primary)	134.7250		Air Guard: 168.6250 (110.9 Tx Tone)
DFPA UAO	Rory Collins	541-580-7158	ODF IA A/G (White Net Primary)	151.310	156.7	
DFPA Dispatch	541-672-6507	Ext 121 or 138	OR-RIC Dispatch	R170.025		S33 (Madras) Unicom: 122.8
OR-RIC		541-957-3253		T166.300	107.2	RDM (Redmond) Unicom: 122.95
			DFPA Dispatch	R151.1600	146.2	16S (Myrtle Creek): 122.7
				T159.4275	146.2	RBG (Roseburg) Unicom: 122.8
			Helibase and Deck	163.100		LMT (Klamath Falls) Unicom: 122.95
			ODF-IA A/G (Orange Net - Secondary)	151.4375	156.7	Myrtle Creek Helibase N42 59.84 W123 18.92 619' Elevation

9. HELICOPTERS

FAA N#	TY	MAKE/ MODEL	BASE	START	AVAIL	REMARKS	FAA N#	TY	MAKE/ MODEL	BASE	START	AVAIL	REMARKS
480	2	UH1B++(On loan if available)	16S	0930	0930	Call Air Support to Order	2WM	1	KMax	Strader	0800	0830	Jordan Olsen 704-418-6646
5MM	2	UH-1H++ (On loan if available)	16S	0930	0930	Call Air Support to Order							



AIR OPERATIONS SUMMARY

Prepared By: Tim Lyda

Prepared Date: 10/06/20

Prepared Time: 1600

INCIDENT NAME: Thielsen	OPS PERIOD DATE: 10/07/20	START TIME: 0800	END TIME: 2000	Sunrise Chemult: 0712	Sunset Chemult: 1837
3. REMARKS (Safety Notes, Hazards, and Air Operations Special Equipment, etc.): Call LIFC on Walker repeater when taking off and landing at Chemult. Transition to RICC as you enter the Umpqua.			MEDEVAC: Short Haul @ Sun River, OR. - Order thru Roseburg Aircraft Desk @ 541-957-3253		TFR #: 0/2378 Polygon to 10000 msl Freq-128.100
<i>Please Send all Aircraft costs to: Archiecreekhelibase@gmail.com</i>					

PERSONNEL	NAME	PHONE #	FREQUENCIES	AM	FM	FIXED-WING- Type/ Make-Model/ N#/ Base
ASGS	Tim Lyda	541-761-2676	A/G		171.1125	
			A/A	128.100		
						AERIAL SUPERVISION- Order through RICC Platforms in KLM and MFR.
HMGB – 0HX Line Medic Water tender	Tyler Davis Ryan Gregor Russ Belloir	360-220-5359 602-363-0770 541-430-0805	Cinnamon (Umpqua) - Rx: 171.425 tone 103.5 - Tx: 166.000 tone 192.8			
Roseburg Dispatch (RICC)		541-957-3325	Walker (Lakeview) - Rx: 170.525 tone: 103.5 - Tx: 162.750 tone: 141.3			
Lakeview Dispatch (LIFC)		541-947-6315				

HELICOPTERS

FAA N#	TY	MAKE/ MODEL	BASE	START	AVAIL	REMARKS	FAA N#	TY	MAKE/ MODEL	BASE	START	AVAIL	REMARKS
20HX	3	AS-350-B3	Beaver Marsh	0800	0900								

INCIDENT RADIO COMMUNICATIONS PLAN (ICS 205)

Controlled Unclassified Information//Basic

1. Incident Name:	2. Date/Time Prepared:	3. Operational Period: DAY	
ARCHIE CREEK	Date: 10/06/2020 Time: 2000	Date/Time From: 10/07/2020 0700 WED	Date/Time To: 10/07/2020 1900 WED

4. Basic Radio Channel Use:

Zone Group	Ch #	Function	Channel Name/Trunked Radio System Talkgroup	Assignment	RX Freq	RX Tone/NAC	TX Freq	TX Tone/NAC	Mode (A,D, or M)	Remarks
1	1	TACTICAL	TAC 1	DIV A / R / S	168.0500N	123.0	168.0500N	123.0	A	TAC 1
1	2	TACTICAL	TAC 2	DIV F / H / K	168.2000N	123.0	168.2000N	123.0	A	TAC 2
1	3	TACTICAL	TAC 3	WRIGHT CREEK	168.6000N	123.0	168.6000N	123.0	A	TAC 3
1	4	TACTICAL	TAC 4		166.7250N	123.0	166.7250N	123.0	A	RESERVED
1	5	TACTICAL	TAC 5	DIV N / Q	166.7750N	123.0	166.7750N	123.0	A	TAC 5
1	6	TACTICAL	RED NET	DFPA DIV W/T/D/E	151.3400N	156.7	151.3400N	156.7	A	DFPA REED NET
1	7	COMMAND	CMD 7	DIV A WRIGHT CRK	171.8250N	123.0	168.4250N	123.0	A	CMD REPEATER NORTH / WEST
1	8	COMMAND	CMD 8	DIV H/K N/Q	173.5000N	123.0	168.5625N	123.0	A	CMD REPEATER SOUTH / EAST
1	9	COMMAND	CMD 9	DIV N/Q R/S W/T/D/E	170.4500N	123.0	168.1000N	123.0	A	CMD REPEATER SOUTH / WEST
1	10	COMMAND	CMD 10	DIV F, H/K, WRIGHT CREEK	169.5375N	123.0	164.7125N	123.0	A	CMD REPEATER NORTH / EAST
1	11	COMMAND	DPFA RPT	DIV W/T/D/E	151.1600N	146.2	159.4725N	146.2	A	DFPA REPEATER
1	12	COMMAND	ROD LANE		170.0250N		166.3000N	107.2	A	BLM LANE MTN REPEATER
1	13	COMMAND	CHILCOOT	DIV F, H/K	170.5500N	103.5	164.8000N	192.8	A	FA CHILCOOT REPEATER
1	14	AIR TO GROUND	A/G PRI	ALL	172.6750N		172.6750N		A	AIR TO GROUND PRIMARY
1	15	AIR TO GROUND	A/G SEC	ALL	172.4625N		172.4625N		A	AIR TO GROUND SECONDARY
1	16	AIR GUARD	AIRGUARD	ALL	168.6250N		168.6250N	110.9	A	AIR GUARD

5. Special Instructions:

6. Prepared By (Communications Unit Leader)	Name: MISSY PARKER	Signature: <i>Missy Parker</i>
ICS 205	IAP Page	Date/Time: 10/06/2020 2000

INCIDENT RADIO COMMUNICATIONS PLAN (ICS 205)

Controlled Unclassified Information//Basic

1. Incident Name:	2. Date/Time Prepared:	3. Operational Period: DAY	
THIELSEN	Date: 10/06/2020 Time: 2000	Date/Time From: 10/07/2020 0700 WED	Date/Time To: 10/07/2020 1900 WED

4. Basic Radio Channel Use:										
Zone Group	Ch #	Function	Channel Name/Trunked Radio System Talkgroup	Assignment	RX Freq	RX Tone/NAC	TX Freq	TX Tone/NAC	Mode (A,D, or M)	Remarks
7	1	COMMAND	E CINNMN	UMPQUA NF CINNAMON BUTTE	171.4250	103.5	166.0000	192.8		DIV A/M, DIV P/W
7	2	COMMAND	E PIGIRN	UMPQUA NF PIG IRON RPTR	171.4250	103.5	166.0000	179.9		DIV P/W
7	3	COMMAND	E DOEHD	UMPQUA NF DOE HEAD RPTR	171.4250	103.5	166.0000	186.2		
7	4	TACTICAL	NURD PRJ	NURD/RRF PROJECT	169.1250	103.5	169.1250	103.5		
7	5	TACTICAL	DLRD PRJ	DIAMOND LAKE RD PROJECT	168.2625	103.5	168.2625	103.5		DIV A/M
7	6	TACTICAL	CG/T PRJ	COTTAGE GROVE/ TILLER PROJECT	167.3750	103.5	167.3750	103.5		DIV P/W
7	7	COMMAND	WNF WALK	WINEMA NF WALKER RPTR	170.5250	103.5	162.7500	141.3		
7	8	COMMAND	RRFHRS	ROGUE RIVER NF HERSHBERGER	169.5750	67.0	164.8750	67.0		
7	9	TACTICAL	CHILCOOT	FA CHILCOOT REPEATER	170.5500N	103.5	164.8000N	192.8	A	
7	10	TACTICAL	INTEROP	DOUGLAS CO. INTEROP	152.6600	151.4	157.8600	110.9		
7	11	COMMAND	CMD 11	THIELSON BASE CAMP	169.7500N	123	167.1000N	123	A	**NOT IN SERVICE**
7	12	COMMAND	CRATR LK	CRATER LAKE NP WATCHMEN	170.1000	110.9	166.2375	110.9		
7	13	AIR TO GROUND	A/G-PRIMARY	NIFC AIR TO GROUND	171.1125N		171.1125N		A	ALL DIVISIONS
7	14	AIR TO GROUND	A/G-SECONDARY	NIFC AIR TO GROUND	173.8625N		173.8625N		A	ALL DIVISIONS
7	15	TACTICAL	VMED 28	INCIDENT MEDIVAC	155.3400		155.3400			
7	16	AIR GUARD	AIR GUARD	AIR GUARD	168.6250N		168.6250N	110.9	A	ALL DIVISIONS

5. Special Instructions:

6. Prepared By (Communications Unit Leader)	Name: MISSY PARKER	Signature: <i>Missy Parker</i>
ICS 205	IAP Page	Date/Time: 10/06/2020 2000

Suppression Repair 101

Constructing Effective Waterbars

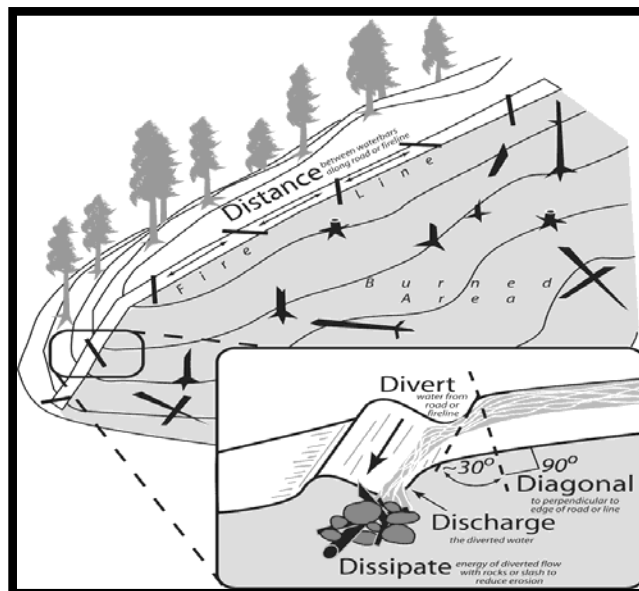
Who doesn't love Suppression Repair? Admittedly, it might not be as exciting as initial attack, but the reality is it is extremely important – our actions during the repair stage set the areas impacted by suppression efforts on a trajectory to heal more quickly than if left alone. Sure, nature is pretty good at healing from all sorts of disturbance, but our actions act like a catalyst....we can help speed up the recovery.

One of the most crucial things we do during Suppression Repair is construct waterbars on firelines. The purpose of a water bar is to slow water down as it travels downhill. When constructed correctly, waterbars help reduce rilling, excessive erosion, and mitigate sediment transfer to streams and rivers.

There are two types of waterbars; effective and ineffective. An effective waterbar has 5 main characteristics (see Figure 1);

- **Distance** – distance between waterbars is adequate for the slope – not too close, and not too far apart.
- **Divert** – the waterbar is effectively anchored into the uphill side so that water is funneled into the waterbar, and not over the top of the waterbar berm.
- **Diagonal** – the waterbar angle does not exceed 45 degrees – waterbars exceeding 45 degrees will not slow the water down.
- **Discharge** – the waterbar is deep enough to ensure there are no barriers, and the water is effectively delivered to the green filter at the end of the waterbar.
- **Dissipate** – the water is dissipated, or filtered, through the green filter at the end of the waterbar. This slows the runoff down and reduces erosion resulting from the energy flow of moving water.

Figure 1. The Five-D System for Effective Fireline Waterbars. Furniss (undated) PNW



Tentative Demob List

Archie Creek Fire - October 7, 2020

EQUIPMENT

E-131	0700	(ENG4)	C2C WILDFIRE 703
E-239	0730	(ENG6)	AMERICAN FIREFIGHTER
E-256	0830	(ENG4)	HI COUNTRY LLC
E-128	0845	(ENG6)	PATRICK ENVIRONMENTAL #12
E-259	0900	(ENG6)	C & K WILDLAND FIRE, LLC
E-29	0915	(AMBU)	HMW SERVICES, BAY CITIES
E-49	1030	(LOG)	MARK JONES TRUCKING, INC.
E-116	1045	(WTS2)	MARK JONES TRUCKING #20

OVERHEAD

O-408	0715	(HEQB)	CULP JR, ROBERT THOMAS
O-14	0745	(FMOD)	TIMBER TIPPER ENTERPRISES INC
O-445	0800	(TFLD)	ANA, RICHARD F
O-483	0800	(HEQB)	MCHATTON, AMANDA
O-400	0815	(EMTF)	CORPORATE MEDICAL SERVICES
O-165	1100	(EMPF)	VERDI, RYAN F
O-436	1800	(SEC1)	ROBINS, KENNETH

Thursday, October 8, 2020

OVERHEAD

O-396	0600	(FACL)	OWEN, DAVID P
O-304	1900	(SECM)	BRADFORD, KAREN L

Tentative Demob List
Thielsen Fire - October 7, 2020

EQUIPMENT

E-2	0930	(WTS2)	SCOTT MARSHALL TRUCKING
E-42	0945	(LOG)	MARK JONES TRUCKING, INC
E-43	1000	(LOG)	MARK JONES TRUCKING

OVERHEAD

O-110	0700	(HECM)	SNELLINGS, ALAN BRENT
-------	------	--------	-----------------------

Thursday, October 8, 2020

CREWS

C-6	0900	(HC2)	PONDEROSA REFORESTATION
-----	------	-------	-------------------------

EQUIPMENT

E-23	0915	(ENG6)	BIG BEAR LOGGING &
------	------	--------	--------------------

OVERHEAD

O-141	0600	(HMGB)	PREZIOSO, ELIJAH DAVID
-------	------	--------	------------------------

DEMOB INSTRUCTIONS

In the COVID-19 environment we are limiting direct contact where possible including within the demob process.

As such, much of the process will be completed via cellphone. Please wear a face covering during any in person interaction.

Demob steps for all resources (must be done in order):

1. Any resources that were off pavement must go through **weed wash**. Location @ Thielsen Fire = Diamond Lake Camp. Location @ Archie Creek Fire = ICP.
2. Check out with **Ground Support** at either camp.
3. Turn in any radios to the **Communications Unit** and checked out supplies to the **Supply Unit** at either camp.
4. Call **Demob Unit** @ 541-887-0815
5. Call **Finance** @ 509-949-3210 or 360-601-8820

If you follow this process you will be made available in the ordering system faster for your next assignment

Any questions about the process please contact the Demob Unit at 541-887-0815.

Thank you and safe travels!

Human Resource Message – Archie Creek/Thielson Fires October 7, 2020



Checking in With You!

Good morning everyone...

It is time to check in and find out how everyone is doing on this fire assignment. We realize many of you have been out on fires for a long time. You have spent some long days on this assignment and have completed a lot of hard work. This has already been a long fire season and it looks like there are many more weeks of hard work ahead for all, so we felt a check in was appropriate today. We also transferred command yesterday, so we want to make sure we have open lines of communication with everyone.

Given the size and complexity of these fires, we find ourselves spread out over many miles and in different camps. Not the best situation for many of us but one that we are dealing with now. We are also looking at cooler, wetter weather coming by the end of the week. Yes, rain and possibly snow in the higher elevations. We will get the rain down here at the ICP and you all may get rain and snow in your camp. Our Logistics folks have ordered extra sleeping bags and are looking at additional ways to make your living accommodations better during this inclement weather. We also ordered better weather, but that order was backlogged. Go figure.

In checking in with you, we also wanted to ask if you are checking in with your family. It is important to reach out to the folks back home and let them know that you are doing well and share with them your work experiences. Folks like to know how our day went and they too like to share their day's experiences. So, if you have not called home in a while, maybe take a moment today and check in with family and friends. Given the current situation with all the fires in the Pacific Northwest, family members are probably concerned with your safety. A reassuring call back home goes a long way in easing everyone's stress.

The work you have done and the work you are doing today is good work and appreciated by the Agencies, Community, and the Fire Teams involved with these fires. Keep up the good work. Take care of yourselves and each other. Stay warm and keep dry. Take the necessary breaks needed to battle fatigue. We consider everyone working with our team, part of our team. We are all in this together...Everyone is doing their part, and Everyone is Appreciated.

Thank you again for all the good work accomplished and have a safe day. If you have any questions or concerns, please let me know. I am at the ICP and I can be reached by phone, text, or email.

Susie Manezes, Human Resource Specialist PNW Team 12 – Contact: 602-571-9327

Located at the Incident Command Post (ICP) Glide, OR. smanezes@blm.gov





Union Contact Information

For

NFFE Bargaining Unit Employees of the Forest Service

As of September 18, 2020

Union Representative(s):	PRIMARY: Linda M. Spencer	SECONDARY: Erin Kidwell
Title:	Chief Steward for Umpqua BU	R6 FS Council VP
E-mail:	linda.m.spencer@usda.gov	erin.kidwell@usda.gov
Phone:	541-825-3163	971-333-4091

Notice of Right to Representation

As a bargaining unit employee represented by a labor organization, you have the right to request representation from your certified labor organization at any investigative examination/interview where you reasonably believe the examination might result in disciplinary action being taken against you. You may make this request at any time prior to or during the interview. If you request union representation, your agency may opt to: (1) suspend questioning and grant your request then resume the interview; (2) discontinue the interview; or (3) offer you the choice to proceed with the interview without a Union representative or to forego the interview.

Clarification about the Above Notice

If a management representative wants to question you (a bargaining unit employee) about an allegation that you were involved in some occurrence that could result in a proposal to discipline you, Union believes it is in your interest to have a Union representative present when you are questioned. **You have to invoke that right by asking for representation. Management is not obligated to inform you of this right, and they are not obligated to automatically arrange for a Union representative to be present.** In the event that you request representation and a Union representative has not been dispatched to the incident, contact will be made with the Union representative listed above, and arrangements will be made for that representative or his designee to come out on site, or to meet with you by telephone.



LINK TO YOUR LABOR CONTRACT

<http://www.nffe-fsc.org/?master>



Afterhours/Nighttime contact #: Erin Kidwell 971-333-4091

Archie Creek Fire & Thielsen Fire Training Message



Contact the Incident Training Specialist

Erika L. Davis (850) 841-0038, Erika.Davis@USDA.GOV, MS Teams, FaceTime, or WhatsApp

TRAINING REGISTRATION



<https://tinyurl.com/yxs7x4bm>

- Initiate registration via QR code
- Send Red Card and PTB cover
- Receive confirmation email w/forms

TRAINING CLOSE-OUT



<https://tinyurl.com/y54ufg3v>

- Initiate Close-out via QR code
- Send completed Performance Evaluation(s), Evaluation Record(s), Final Evaluators Verification (if necessary)

LOGISTICS INFORMATION

Archie Creek Kitchen
Breakfast: 0600-0830
Dinner: 1830-2130

Archie Creek Showers
Opens: 0500
Closed: 1200-1400
Closed: 2200

Thielsen Spike
Breakfast: 0530-0900
May change to 0600
Dinner: 1800-2100



For COVID mitigation, please reduce the numbers of individuals coming to the kitchen window. Send representatives to collect meals for groups.

FINANCE

Communications for Finance should be sent to
2020.Archiecreek.finance@firenet.gov

Send CTRs and Shift Tickets to the above email.

Please keep your CTRs and Shift Tickets up-to-date –**DON'T WAIT!**

Resource Order Numbers in 8000's
Beginning 10/05/2020 will demob from the
DFPA OFFICE
1758 NE Airport Road
Roseburg, OR 97470

Contact Information:

Equipment Time: Christina Goebel – 509-670-5889

Personnel Time: Carol Long – 509-433-1115

Procurement: Mark Bohnet – 509-531-7418

Compensation & Claims: Barb Haxby – 360-601-8820

Finance Section Chief: Cheri Fuller – 509-949-3210

Deputy Finance Section Chief: Barb Haxby – 360-601-8820

ICPI: Rob Hechinger – 509-675-5821



Finance Archie Creek

FINANCE

Communications for Finance should be sent to
2020.Thielsen.finance@firenet.gov

Submit all Personnel Time & Equipment Time to the email above!

All CTRs and Shift tickets must be signed by your incident supervisor.

Shift tickets shall also be signed by the contractor or their representative. Please write the fire name and your **Resource Order Number** on the CTR or shift tickets.

Only one person (single resource) on a Crew Time Report (CTR)

You should project time through you travel day if you are demobing. Follow the demobbing instructions during COVID previously listed in the IAP.

If you are scheduled to demob in the next day or so, please contact Finance **today to ensure that you time is complete and up to date.**

Finance is located at: 2300 NE Aviation Drive, Roseburg OR, 97470



Finance Thielsen

ARCHIE CREEK CONTACT LIST

FINANCE

2020.archiecreek.finance@firenet.gov

DMOB

2020.archiecreek.DMOB@firenet.gov

Situation

2020.archiecreek.situation@firenet.gov

PLANS

2020.archiecreek.plans@firenet.gov

LOGISTICS

All orders (ICS-213) need to be submitted electronically to:

2020.archiecreek.ordering@firenet.gov

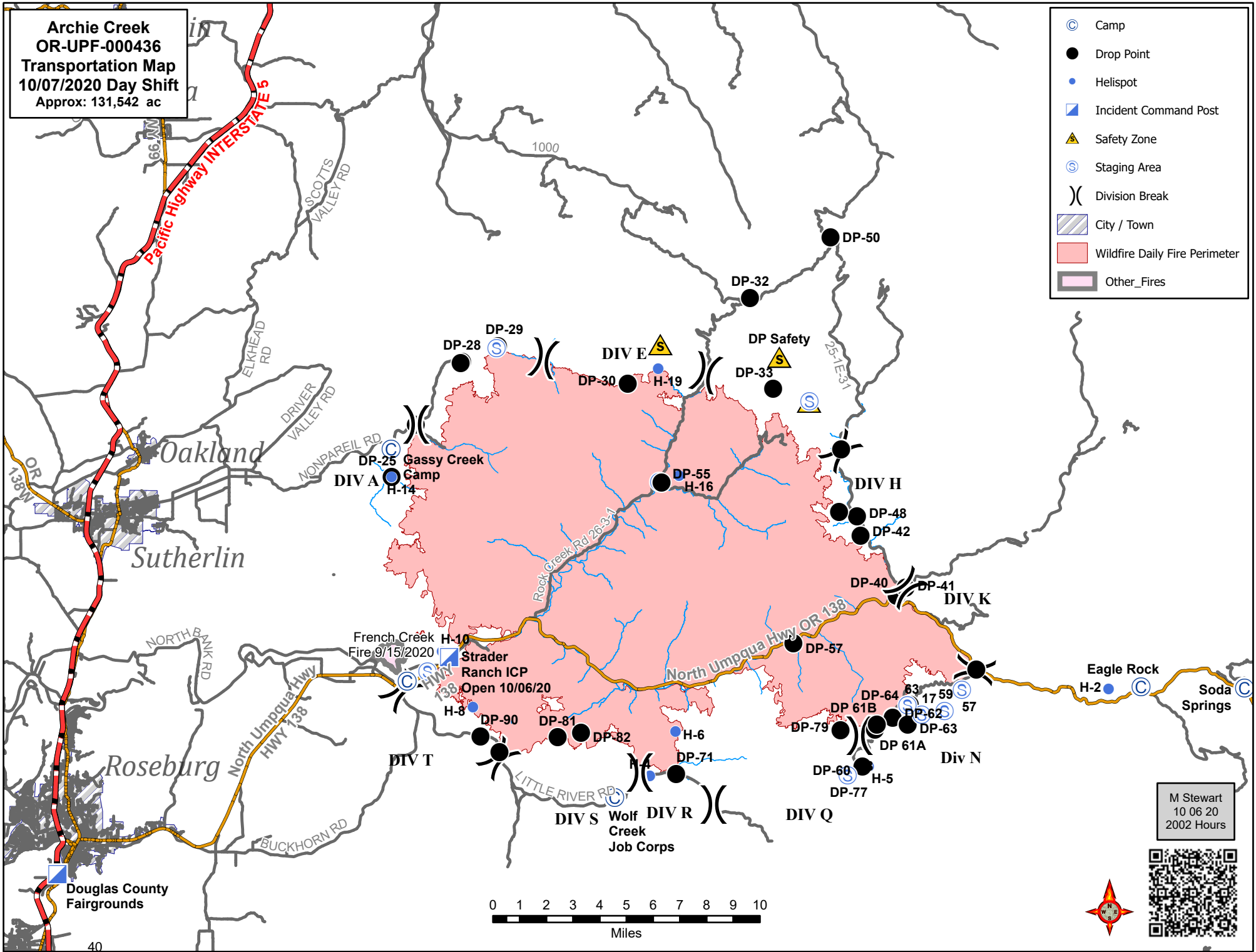
INFORMATION

2020.archiecreek@firenet.gov

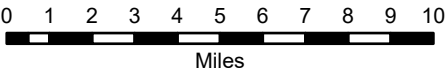
NOTE: These email addresses are used for both Thielsen and Archie Creek Fires.

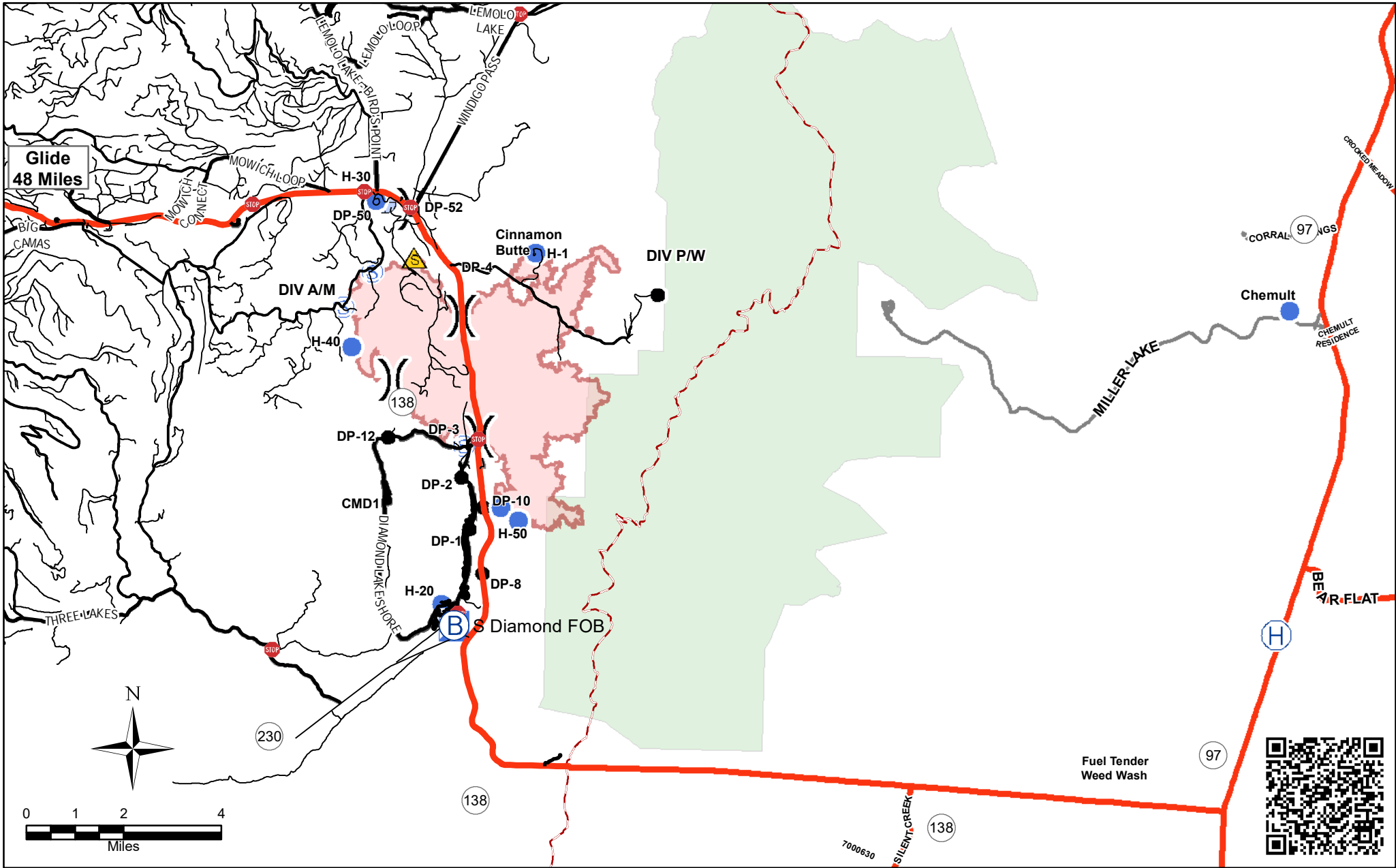
**Archie Creek
OR-UPF-000436
Transportation Map
10/07/2020 Day Shift
Approx: 131,542 ac**

-  Camp
-  Drop Point
-  Helispot
-  Incident Command Post
-  Safety Zone
-  Staging Area
-  Division Break
-  City / Town
-  Wildfire Daily Fire Perimeter
-  Other_Fires



M Stewart
10 06 20
2002 Hours





-  Checkpoint
-  Incident Command Post
-  Drop Point
-  Safety Zone
-  Staging Area
-  Water Development or Draft Site
-  Division Break
-  Wildfire Daily Fire Perimeter
-  Wilderness

Weed Wash:
 The access road to Buck Eye Cinder Pit is on the north side of HWY 138 approximately 1.25 miles west from the Junction with HWY 97. The road is signed in orange as "Staging Area."
 To access the weed wash, traffic travelling north will proceed to the Buck Eye cinder pit to turn around. They will then travel south and enter the weed wash on the right side of the road. The exit is the same pit access road back to HWY 138.

Thielsen Fire
OR-UPF-000441
IAP Transportation Map
10/06/2020 Day Shift

Incident Maps

Maps are not included in the IAP document due to size and page count. For detailed Operations, Transportation and other maps, scan the QR code (or click the link below it) for your fire:



[Archie Creek](#) (click to open)



[Thielsen](#) (click to open)

Send Map Updates

Send map updates by email to the Situation Unit email address for your fire:

Archie Creek: 2020.archiecreek.situation@firenet.gov

Thielsen: 2020.thielsen.situation@firenet.gov

Alternately, text/call the Situation Unit at 360-584-3373. Make sure to include your name, position and explanation of the update you send.

How to correctly send data from Avenza:

1. Open the map in Avenza.
2. Click the pin with three lines near the lower-right corner.
3. *iPhone*: In the lower right, click the square with up arrow. From the pop-up menu, choose Export to Others.
Android: In the lower right, click the circle with three lines. Click the pop-up circle with up arrow.
4. Set these options:
 - a. Filename – leave alone
 - b. Export Format – choose SHP, GPX or KML
 - c. Data – all features
 - d. Image size – no image
5. Click the Export button in the upper-right corner.
6. When the export is ready, choose your Mail application.
7. Send the email to the address for your fire.
8. Your email needs to include your name and position
9. Your email needs to include an explanation of the data you are sending.

REQUIRED BY ALL PERSONNEL: COVID-19 DAILY CHECKLIST

Supervisors are required to go over this list each morning with assigned resources. Please make a notation in the remarks section on your daily Crew Time Report documenting your daily health assessment check.

Self-Awareness / Screening

- Notify supervisor if you or others experience:
 - Fever or chills
 - Cough
 - Shortness of breath or difficulty breathing
 - Fatigue
 - Muscle or body aches
 - Headache
 - New loss of taste or smell
 - Sore throat
 - Congestion or runny nose
 - Nausea or vomiting
 - Diarrhea
- Have you had close contact within the last 14-days with someone who is currently sick with confirmed COVID-19? (Note: Close contact is defined as within 6 feet for more than 15 minutes per CDC Guidelines)
- Review and follow crew and division plans to isolate, triage, and transport symptomatic personnel: Contact line EMT or COVID Module personnel for next steps.

Covid-19 Prevention and Mitigation Measures

- Properly wash or sanitize your hands often, especially before and after eating or entering a public place, and after coughing or sneezing.
- Avoid handshakes and communal use items.
- Maintain a supply of hand sanitizer and hand wipes. Inform supervisor of needed resupply.
- Disinfect high touch surfaces often: Radios, phones, doors, pumps, fuel cans, etc.
- Camps will work off a “restricted camp” principle. Once you are checked into the incident, your ability to restock personal items may be limited.

Social Distancing and Protective Equipment

- Initiate, practice, and remind others of social distancing.
- Conduct briefings and conversations outdoors and at least 6 feet apart.
- Remain 6 feet apart while waiting in line for meals or showers
- Utilize face coverings indoors at all times and outdoors when you are less than 6 feet apart from others.
- Clean or replace dirty face coverings, equipment, and PPE.

Communications

- Face coverings and social distancing complicate communications. Ensure effective sender/receiver messaging.

COVID-19 MITIGATIONS FOR ARCHIE CREEK FIRE

- Masks must be worn at all times in base camp, spike camp and ICP.
- Modules (e.g. crews, engines) should send representatives to pick up meals for the entire group: 1 person for engine crews, 3-4 people for 20 person crews.
- Join morning briefing via phone (number provided in IAP)
- Observe 6-foot social distancing during briefings and while standing in line for meals, and any other time you are near people outside of your module.
- Limit contact between firefighters and the public as much as possible, use crew representatives to pick up supplies, fuel, etc.

WEAR YOUR MASK

WASH YOUR HANDS

WATCH YOUR DISTANCE



UNIT LOG	1. Incident Name	2. Date Prepared	3. Time Prepared
	4. Unit Name/Designators	5. Unit Leader (Name and Position)	6. Operational Period
7. Personnel Roster Assigned			
Name	ICS Position	Home Base	
8. Activity Log			
Time	Major Events		
9. Prepared by (Name and Position)			

Archie Creek Fire

ICP/Base Camp

MEDICAL EMERGENCY PROCEDURE

**YELL for HELP
STAY WITH PATIENT**

**SEND SOMEONE TO COMMUNICATIONS/OR
CALL:**

COMMUNICATIONS TRAILER IS AT THE BASE CAMP,
LOCATED IN GLIDE OREGON (BEHIND THE ROWS
OF YURTS). THE INCIDENT MEDICAL TENT IS
LOCATED IN THE EAST END OF THE YURT ROWS.

**COMMUNICATIONS WILL START
APPROPRIATE MEDICAL RESPONSE**

DAY AND NIGHT 24 HR

Communications:
Command or Cell: 206-450-6582

Thielsen Fire
**Spike Camp
In Camp Safety**

MEDICAL EMERGENCY PROCEDURE

**YELL for HELP
STAY WITH PATIENT**

CALL CELL NUMBER LISTED BELOW

**LEE ZANNING WILL START APPROPRIATE
MEDICAL RESPONSE**

DAY AND NIGHT 24 HR

Communications: Lee Zanning
Cell: 417-459-5759

EMERGENCY PLAN

INCIDENT WITHIN AN INCIDENT

ON SCENE SUPERVISOR

In the event of an accident or medical incident of any size, your primary responsibility is to ENSURE that the victim(s) receive prompt and effective Triage, Treatment and Transportation.

- Conduct size-up of the incident (nature of accident, number type of resources involved, latitude and longitude location); notify incident communications center and supervisor, request assistance as needed.
- Order and coordinate medical and support response to the accident.
- Evaluate special needs (law enforcement, haz mat, etc.).
- Clear the command frequency if medical emergency; coordinate with incident communications and air attack for air medical transportation needs
- Preserve and photograph the scene for accident investigation.
- Remain aware of surroundings and the status of the main incident (delegate personnel to monitor the main fire) to ensure safety of medical treatment personnel.
- Until relieved, supervise and manage all personnel involved at the incident scene.
- **ENSURE THE MEDICAL INCIDENT REPORT IN THE INCIDENT ACTION PLAN IS BEING USED AND FOLLOWED.**

MEDICAL PLAN (ICS 206 WF)

1. Incident/Project Name		2. Operational Period				
Archie Creek		Date/Time 10/07/2020 0600-1900				
3. Ambulance Services						
Name	Complete Address	Phone		Advanced Life Support (ALS) Yes No		
Douglas County Fire District #2	4200 Carnes Rd Roseburg, OR 97471	Dispatch 541-440-4471 or 911		x		
Glide Rural Fire Protection	18910 N. Umpqua Hwy Glide, OR 97443	Dispatch 541-440-4471 or 911			x	
4. Air Ambulance Services						
Name	Phone	Type of Aircraft & Capability				
Reach Helicopter Service	800-338-4045	EC-135 Night Capability (Roseburg)				
Life Flight / Airlink	800-232-0911	EC-135 Night Capability				
Forest Service Short Haul	Air Ops	Located in Sunriver, OR				
5. Hospitals						
Name Complete Address	GPS Datum – WGS 84 Coordinate Standard Degrees Decimal Minutes DD° MM.MMM' N - Lat DD° MM.MMM' W - Long	Travel Time From ICP Air Gnd		Phone	Helipad Yes No	Level of Care Facility
Legacy Emmanuel Medical 3001 N Gantenbein Ave. Portland, OR 97202	Lat: 45° 32.688 N	1 Hr 30 Min	3 Hr 10 Min	(888) 598-4232	X	Level 1 Trauma & Burn Center
	Long: 122° 40.293 W					
	VHF: 155.340					
Mercy Medical 2700 NW Stewart Pkwy. Roseburg, OR 97471	Lat: 43° 14.57 N	20 Min	40 Min	541-677-4333	X	Level 3 Trauma
	Long: 123° 21.99 W					
	VHF: 155.340					
Sacred Heart Medical Center 3333 Riverbend Dr. Springfield, OR 97477	Lat: 44° 04.87 N	35 Min	1 Hr 10 Min	541-222-6929	X	Level 2 Trauma
	Long: 123° 01.58 W					
	VHF: 155.340					
6. Division Branch Group						
	Capability	Personnel				
A/R/S	Medic 6 (E-308), Medic 3 (E-175), BTE REMS (0-430), EMTF Eblin (0-331)					
F/H/K	Medic 4, (E-286), Albuquerque REMS (0-479)					
N/Q	Medic 1 (E-29), Medic 5 (E-291), Douglas County REMS (0-382), EMPF Belcher (0-399)					
Wright Group	EMPF Bennet (0-496)					
7. Prepared By (Medical Unit Leader)						
8. Date/Time		9. Reviewed By (Safety Officer)		10. Date/Time		
Eamonn Ryan, Bonnie Gibbons <i>Eamonn Ryan</i>		Troy Corn <i>Troy Corn</i>				

MEDICAL PLAN (ICS 206 WF)

1. Incident/Project Name		2. Operational Period						
Thielsen		Date/Time 10/07/2020 0600-1900						
3. Ambulance Services								
Name	Complete Address	Phone	Advanced Life Support (ALS)					
			Yes	No				
Chemult Fire Protection	109800 US 97 Chemult, OR 97731	Dispatch 541-290-2172 or 911	x					
Crescent Fire and Ambulance	136727 Main Street Crescent, OR 97733	Dispatch 541-433-2466 or 911	x					
4. Air Ambulance Services								
Name	Phone	Type of Aircraft & Capability						
Mercy Flight	800-903-9000	Bell 407, Night Capability						
Life Flight / Airlink	800-232-0911	EC-135 Night Capability						
Forest Service Short Haul	Air Ops	Located in Sunriver, OR						
5. Hospitals								
Name Complete Address	GPS Datum – WGS 84 Coordinate Standard Degrees Decimal Minutes DD° MM.MMM' N - Lat DD° MM.MMM' W - Long		Travel Time From ICP		Phone	Helipad		Level of Care Facility
	Lat:	Long:	Air	Gnd		Yes	No	
Legacy Emmanuel Medical 3001 N Gantenbein Ave. Portland, OR 97202	45° 32.688 N	122° 40.293 W	1 Hr 30 Min	3 Hr 10 Min	(888) 598-4232	X		Level 1 Trauma Burn Center
	155.340							
St. Charles 2500 Neff Road Bend, OR 97701	44° 3.4904 N	121° 18.9185 W	40 Min	1 Hr 10 Min	541-706-4550 (ER)	X		Level 2 Trauma
	155.340							
Sacred Heart Medical Center 3333 Riverbend Dr. Springfield, OR 97477	44° 04.87 N	123° 01.58 W	35 Min	1 Hr 10 Min	541-222-6929	X		Level 2 Trauma
	155.340							
6. Division Branch Group	Capability	Personnel						
N. Diamond	TBA							
A/M/P/W	Chemult Ambulance (E-71), Med Transport Ambulance (E-72), EMP Stivers (O-59), EMT Hoover (O-157), EMT Forsythe (O-175), EMP Gregor (O-328)							
7. Prepared By (Medical Unit Leader)	8. Date/Time	9. Reviewed By (Safety Officer)		10. Date/Time				
Eamonn Ryan, Bonnie Gibbons <i>Eamonn Ryan</i>	10/6/2020 1900	Troy Corn <i>Troy Corn</i>						

MEDICAL PLAN (ICS 206 WF)

Controlled Unclassified Information//Basic

Medical Incident Report

FOR A NON-EMERGENCY INCIDENT, WORK THROUGH CHAIN OF COMMAND TO REPORT AND TRANSPORT INJURED PERSONNEL AS NECESSARY.

FOR A MEDICAL EMERGENCY: IDENTIFY ON SCENE INCIDENT COMMANDER BY NAME AND POSITION AND ANNOUNCE "MEDICAL EMERGENCY" TO INITIATE RESPONSE FROM IMT COMMUNICATIONS/DISPATCH.

Use the following items to communicate situation to communications/dispatch.

1. CONTACT COMMUNICATIONS / DISPATCH (**Verify correct frequency prior to starting report**)

Ex: "Communications, Div. Alpha. Stand-by for Emergency Traffic."

2. INCIDENT STATUS: *Provide incident summary (including number of patients) and command structure.*

Ex: "Communications, I have a Red priority patient, unconscious, struck by a falling tree. Requesting air ambulance to Forest Road 1 at (Lat./Long.) This will be the Trout Meadow Medical, IC is TFLD Jones. EMT Smith is providing medical care."

Severity of Emergency / Transport Priority	<input type="checkbox"/> RED / PRIORITY 1 Life or limb threatening injury or illness. Evacuation need is IMMEDIATE <i>Ex: Unconscious, difficulty breathing, bleeding severely, 2° – 3° burns more than 4 palm sizes, heat stroke, disoriented.</i> <input type="checkbox"/> YELLOW / PRIORITY 2 Serious Injury or illness. Evacuation may be DELAYED if necessary. <i>Ex: Significant trauma, unable to walk, 2° – 3° burns not more than 1-3 palm sizes.</i> <input type="checkbox"/> GREEN / PRIORITY 3 Minor Injury or illness. Non-Emergency transport <i>Ex: Sprains, strains, minor heat-related illness.</i>	
Nature of Injury or Illness & Mechanism of Injury		<i>Brief Summary of Injury or Illness (Ex: Unconscious, Struck by Falling Tree)</i>
Transport Request		<i>Air Ambulance / Short Haul/Hoist Ground Ambulance / Other</i>
Patient Location		<i>Descriptive Location & Lat. / Long. (WGS84)</i>
Incident Name		<i>Geographic Name + "Medical" (Ex: Trout Meadow Medical)</i>
On-Scene Incident Commander		<i>Name of on-scene IC of Incident within an Incident (Ex: TFLD Jones)</i>
Patient Care		<i>Name of Care Provider (Ex: EMT Smith)</i>

3. INITIAL PATIENT ASSESSMENT: *Complete this section for each patient as applicable (start with the most severe patient)*

Patient Assessment: See IRPG page 106

Treatment:

4. TRANSPORT PLAN:

Evacuation Location (if different): *(Descriptive Location (drop point, intersection, etc.) or Lat. / Long.)* Patient's ETA to Evacuation Location:

Helispot / Extraction Site Size and Hazards:

5. ADDITIONAL RESOURCES / EQUIPMENT NEEDS:

Example: Paramedic/EMT, Crews, Immobilization Devices, AED, Oxygen, Trauma Bag, IV/Fluid(s), Splints, Rope rescue, Wheeled litter, HAZMAT, Extrication

6. COMMUNICATIONS: Identify State Air/Ground EMS Frequencies and Hospital Contacts as applicable

Function	Channel Name/Number	Receive (RX)	Tone/NAC *	Transmit (TX)	Tone/NAC *
COMMAND					
AIR-TO-GRND					
TACTICAL					

7. CONTINGENCY: **Considerations:** *If primary options fail, what actions can be implemented in conjunction with primary evacuation method? Be thinking ahead.*

8. ADDITIONAL INFORMATION: *Updates/Changes, etc.*

REMEMBER: Confirm ETA's of resources ordered. Act according to your level of training. Be Alert. Keep Calm. Think Clearly. Act Decisively.

Controlled Unclassified Information//Basic