

INCIDENT ACTION PLAN

Archie Creek / Thielsen



**0700 MORNING PHONE
BRIEFING INFO**

Phone Briefing: 1-888-609-7602
Passcode: 7544830#

PLEASE remember to MUTE your phone
when you call in



October 8, 2020
0700-1900 Operational Period

Archie Creek
OR-UPF-000436
P6NKL8 (0615)

Thielsen
OR-UPF-000441
P6NKN621 (0615)

IAP



CHECK IN



Archie Creek Maps



Thielsen Maps




This page intentionally left blank.



INCIDENT OBJECTIVES (ICS 202)

1. Incident Name:	2. Operational Period: DAY	
ARCHIE CREEK / THIELSEN	Date/Time From: 10/08/2020 0700 THU	Date/Time To: 10/08/2020 1900 THU
3. Objective(s):		
Life and safety for firefighters and the public is priority.		
Protect communities, critical infrastructure, timber values, recreation sites and natural resource values.		
Implement Covid-19 prevention and mitigation procedures as outline by the CDC and the Geographic Wildfire Response Plan.		
Implement strategies and tactics that commit responders only to operations and tasks that will have a high probability of success with the least exposure necessary.		
Coordinate suppression repair tasks with Resource Advisors and implement in a manner that will minimize impacts to protected cultural and aquatic resources.		
4. Operational Period Command Emphasis:		
Continue to implement the suppression repair plan and coordinate work assignments with assigned Resource Advisors.		
General Situational Awareness:		
Stay clear of heavy equipment operations and drive defensively.		
5. Site Safety Plan Required? Yes <input type="checkbox"/> No <input checked="" type="checkbox"/>		
Approved Site Safety Plan(s) Located at:		
6. Incident Action Plan (the items checked below are included in this Incident Action Plan):		
<input checked="" type="checkbox"/> ICS 202	<input type="checkbox"/> ICS 207	Other Attachments:
<input checked="" type="checkbox"/> ICS 203	<input type="checkbox"/> ICS 208	<input checked="" type="checkbox"/> SAFETY MESSAGE
<input checked="" type="checkbox"/> ICS 204	<input checked="" type="checkbox"/> ICS 220	<input checked="" type="checkbox"/> HUMAN RESOURCE MSG
<input checked="" type="checkbox"/> ICS 205	<input type="checkbox"/> Map/Chart	<input checked="" type="checkbox"/> COVID PRECAUTIONS & SCREENING TOOL
<input type="checkbox"/> ICS 205A	<input checked="" type="checkbox"/> Weather Forecast/Tides/Currents	<input checked="" type="checkbox"/> UNIT LOG
<input checked="" type="checkbox"/> ICS 206		
7. Prepared by: MARGE HUTCHINSON	Position/Title: PSC2	Signature: <i>Marge Hutchinson</i>
8. Approved by Incident Commander:	Name: BOBBY SHINDELAR	Signature: <i>Bobby Shindelar</i>
ICS 202	IAP Page	Date/Time: 10/07/2020 2000

ORGANIZATION ASSIGNMENT LIST (ICS 203)

1. Incident Name:		2. Operational Period: DAY	
ARCHIE CREEK / THIELSEN		Date/Time From: 10/08/2020 0700 THU	Date/Time To: 10/08/2020 1900 THU
3. Incident Commander(s) and Command Staff:		GROUND SUPPORT UNIT	MARK ANDERSON
INCIDENT COMMANDER	BOBBY SHINDELAR	COMMUNICATIONS UNIT	MISSY PARKER
DEPUTY		MEDICAL UNIT	EAMONN RYAN BONNIE GIBBONS; LEEVENNING(T)
SAFETY OFFICER	TROY CORN JACK CATES	SECURITY UNIT	
INFORMATION OFFICER	MARY BEAN ROLAND EMETAZ	FOOD UNIT	JOHN SHACKELFORD
LIAISON OFFICER	SCOTT CRAWFORD		
HUMAN RESOURCE SPECIALIST	SUSIE MANEZES	7. Operations Section:	
		PLANNING OPS	MATT CASTLE
		OPERATION SECTION CHIEF	JEFF BOUSCHER TONY ENGEL
4. Agency/Organization Representative(s):			
Agency/Organization	Name		
UMPQUA NF - AA	ALICE CARLTON		
UMPQUA NF - AREP	K.C. BRIGGS SHERRI CHAMBERS	DIVISION/GROUP	ARCHIE CK - A/R/S LARRY LEACH
BLM - AA	HEATHER WHITMAN	DIVISION/GROUP	ARCHIE CK - F/H/K MATT KENNEDY
BLM - AREP	CHRIS FOSTER	DIVISION/GROUP	ARCHIE CK - N/Q MICHAEL JACKSON
BLM - RESOURCE ADVISOR	JEFF MCENROE	DIVISION/GROUP	ARCHIE CK - WRIGHT CREEK BOB HINDS
USFS - RESOURCE ADVISOR	RON MCMULLIN JED HANCOCK	BRANCH DIRECTOR	AARON ROWE
5. Planning Section:		DIVISION/GROUP	THIELSEN - NORTH DIAMOND RICHARD TINGLE
CHIEF	MARGE HUTCHINSON HOWARD JOHNSON (VIRTUAL)	DIVISION/GROUP	THIELSEN - A/M/P/W CODY ACORD CHRIS WHITE (T)
DEPUTY	ERIC BLACK		
RESOURCES UNIT	JILL JOHNSON	7b. Air Operations Branch:	
SITUATION UNIT	DAVE WISCHER	AIR OPS BRANCH DIRECTOR	TIM LYDA
DOCUMENTATION UNIT	JEFF DEARDORFF	AIR ATTACK SUPERVISOR	
DEMOBILIZATION UNIT	NATHAN JEFFRIES (VIRTUAL)	AIR SUPPORT SUPERVISOR	
FIRE BEHAVIOR ANALYST	DON STRAND		
TRAINING SPECIALIST	ERIKA DAVIS	8. Finance/Administration Section:	
GIS SPECIALIST	SHAWN BUSHNELL; BOB KIRK MATT STEWART (T)	CHIEF	CHERI FULLER
TECHNOLOGY SUPPORT SPECIALIST	GEORGE JENKINS TODD MALLERY	DEPUTY	BARB HAXBY
INCIDENT METEOROLOGIST	DAN BYRD	TIME UNIT	CAROL LONG
		PROCUREMENT UNIT	MARK BOHNET
		COST UNIT	STEVE CROW
		ICPI	ROB HECHINGER
6. Logistics Section:			
CHIEF	PETER FITZMAURICE		
DEPUTY			
SUPPLY UNIT	JOHN KAUPA		
FACILITIES UNIT	KEVIN HAUGHTON		
9. Prepared By:	Name: JILL JOHNSON	Position/Title: RESL	Signature: 
ICS 203	IAP Page	Date/Time: 10/07/2020 2000	



FIRE WEATHER FORECAST



FORECAST NO: 30
SHIFT DATE: Thursday, Oct 8th, 2020
PREDICTION FOR: 0600-2000
UNIT: OR- Umpqua NF

INCIDENT NAME: Archie Creek/Thielsen
Incident Meteorologist – Dan Byrd
SIGNED: *Dan Byrd*

TIME AND DATE
FORECAST ISSUED: 2000 hrs. 10/7/20

WEATHER DISCUSSION: The ridge will begin to weaken on Thursday with cooler temperatures and higher Rh's. Clouds will be on the increase on Friday, out ahead of a strong Pacific storm system that will move into the region over the weekend. Rain will move into the area early Saturday morning and this will continue through Saturday night. Snow may mix in Saturday night at higher elevations, with snow levels falling to around 5700 feet. Light rain will continue into Sunday, but snow levels will rise to around 7000 feet Sunday afternoon.

SKY/WEATHER TODAY: Partly cloudy and cooler. Areas of fog early, lifting by 10-11 am.

MAX TEMPERATURES / MIN RELATIVE HUMIDITY:

2000 FT: (Archie Creek) 68 to 73 degrees (Down 6-8) / 30 to 38 (Up 12-15%)
5000 FT: (Thielsen) 63 to 68 degrees (Down 5-7) / 25 to 32 (Up 7-10%)

EYE LEVEL WINDS:

Slope/Valley: Down slope/drainage 5 mph, becoming upslope from the south 5-10 mph late morning, then generally from the west and up drainage 5-10 G15 mph in the afternoon.
Ridges: Southwest 4 to 8 G12 mph.

Transport Wind: W 6 mph.

LAL: 1.

Inversion: Weak at 1,000ft AGL early.

Chc of Wetting Rain (> or = to 0.25"): 0%

Afternoon Mixing Height: 4,000ft AGL.

SKY/WEATHER TONIGHT: Partly cloudy. Areas of fog in Canyons/Valleys.

MIN TEMPERATURES / MAX RELATIVE HUMIDITY

2000 FT: (Archie Creek) 47 to 53 degrees (Down 3-5) / 80 to 90% (Up 20%)
5000 FT: (Thielsen) 33 to 40 degrees (Down 1-3) / 50 to 60% (Steady)

EYE LEVEL WINDS:

Slope/Valley: Up slope and up drainage 4-7 mph early evening, becoming downslope and down drainage 4-8 mph overnight.
Ridges: Southwest 4 to 8 mph.

LAL: 1.

Inversion: Strong at 1000ft AGL.

Chc of Wetting Rain (> OR = to 0.25"): 0%

2-5 Day Outlook, Fri-Mon (2000 Feet): * Pacific storm system bringing rain this weekend, warmup next week*

Friday: Partly becoming mostly cloudy. **High Temp:** 65-75 **Min RH:** 35. **Wind:** SW 10 G15.

Saturday: Cloudy with rain, slight chance of a thunderstorm. **High Temp:** 45-55 **Min RH:** 75. **Wind:** SW 10 G20-25.

Sunday: Cloudy with light rain likely. **High Temp:** 44-54 **Min RH:** 60. **Wind:** NW 10 G20.

Monday: Cloudy with a chance of light rain. **High Temp:** 50-60 **Min RH:** 50. **Wind:** NW 10 G15.

Observations from midnight through 1800 PDT Wednesday, 10/7/20:

North Bank (1913ft): Temps 58F/75F, RH: 66%/43%, Pk Wind: NW 10 G15 mph.

Little River IRAWS (2100ft): Temps 58F/79F, RH: 55%/30%, Pk Wind: WSW 11 G14 mph.

Grandad (2900ft): Temps: 52F/78F, RH: 69%/26%, Pk Wind: SW 6 G10 mph.

Lookout Mtn PRAWS (4739ft): Temps: 59F/71F, 49%/23%, Pk Wind: SSW 2 G5 mph.

Cinnamon (4834ft): Temps: 40F/73F, 82%/25%, Pk Wind: WNW 3 G9 mph.

FIRE BEHAVIOR FORECAST

FORECAST NUMBER: 28	TYPE OF FIRE: Wildland
FIRE NAME: Archie Creek / Thielsen	OPERATIONAL PERIOD: Oct. 8, 2020
DATE ISSUED: October 7, 2020	TIME ISSUED: 2000 Hours
UNIT: Umpqua NF	SIGNED: _____ Don Strand _____ Typed/printed:

INPUTS

WEATHER SUMMARY: See attached forecast
 Archie Creek: Temps 73, Min RH's 38%, Winds-ridgetop winds SW 8-12, otherwise light and variable (Diurnal winds).
 Thielsen: Temps 69, Min RH's 29%, Winds- ridgetop winds SW 8-12, otherwise light and variable (Diurnal winds).

OUTPUTS

FIRE BEHAVIOR

GENERAL: Slightly higher fuels moistures in the 1-hour and 10-hour fuels today, those fuels will still be receptive to ignition. Fuels moistures will be increasing the next few days.

Archie Creek: During the afternoon, 1-hour fuel moistures minimums will be near 7% unshaded and 10- hour fuels will be near 9%. 1000- hour fuel moistures will continue to be near 14%. ERC-G values will be near 50 today

Thielsen: In the afternoon, 1-hour fuels moistures will be near 6% unshaded, 10-hour fuels moistures will approach 8%, 1000-hour fuel moistures will remain near 16%. ERC-G values will continue to be near 42 today.

Overall, fire behavior will be minimal today although in places there will be limited smoldering and creeping. Some open flame may be present in larger down logs, old stumps, snags and in recent needle cast. Areas of dirty burn likely to experience minimal creeping fire behavior with some open flame at times. In the event the fire has positioned itself below-down slope of heat-treated ladder fuels, slight chance for flare ups exist.

If fire starts outside containment lines, expect moderate rates of spread with potential for isolated torching.

Rate of spread and flame lengths are model outputs based on maximum values for the fuel models shown, with current fuel moistures in exposed locations on steep slope.

Fuel Model	Rate of Spread	Flame Length
Grass/Shrub (GS2)	7 chains/hour 8 feet/min	3 feet
Mature Timber (TU2 & TL5)	3 chains/hour 3 feet/min	< 2 feet

In one hour, spot fire size would approach 1 acre in timber and 3 acres in grass/shrub.
 Probability of Ignition = 48%

AIR OPERATIONS: Light smokey haze today

SAFETY

Continue to watch for fire weakened trees and snags burning through and falling.

When falling hazard trees with live or dead needles, potential for flare ups exist if they land on a hot spot.

Safety Message

8 October 2020

INCIDENT: Archie Creek/Thielsen

OPERATIONAL PERIOD: 0700-1900

TOPICS:

DRIVING/TRANSPORTATION

Practice defensive driving skills and maintain time and distance from other vehicles and visual obstructions such as curves and blind spots. Be aware of debris fall and logs along the right-of-way. Keep your speeds low and take your time.

COOLER/WETTER WEATHER

Cool and wet weather is on the way. Significant rainfall is forecasted for the weekend. Take steps to stay warm and dry and prepare your camp for extended wet weather.

COMMON BARRIERS TO EFFECTIVE COMMUNICATION PART 1

Stress and out-of-control emotion. When you're stressed or emotionally overwhelmed, you're more likely to misread other people, send confusing or off-putting nonverbal signals, and lapse into unhealthy knee-jerk patterns of behavior. To avoid conflict and misunderstandings, you can learn how to quickly calm down before continuing a conversation.

“Don't forget your COVID protocols and mitigations”

SAFETY OFFICER: Troy Corn, Jack Cates

Deliberate Risk Assessment-Hazard Summary

8 October 2020

Hazard	Mitigation	Post Risk
COVID Viral Transmission	Maintain awareness of health, perform self checks, maintain social distancing, wear face covering when within social distancing space (minimum 6'), report and isolate if not feeling well, implement Module of One and Hub/Spoke criteria to greatest extent possible, establish relationship with local public health, establish a schedule to clean all frequently touched surfaces, maintain cleanliness of own workspace, box meals by crew (no more than 20), single person distribution for meals and hydration (24 hour supply of hydration each day supplied with breakfast)	Low
Extraction Time	Identify medivac sites and helispots. Initiate ground transport to accident site. Identify EMT's from resources assigned to division. Provide line qualified paramedics to each division as available. Review IWI protocol to ensure familiarity. Utilize short haul in remote areas. Evaluate on-going need for repositioning medical personnel.	High
Steep Terrain/Gravity	Do not work crews above or below each other. Post lookouts for rolling material. Watch footing in loose soil, rock and around vegetation. Do not work below heavy equipment. Scout and identify travel routes. Establish LCES.	Moderate
Physical Factors	Maintain hydration schedule. Closely monitor work rate and implement rest periods. Maintain nutrition. Ensure adequate work/rest.	Moderate
Environmental Factors	Assign medical personnel to camp. Assess for known allergies and report to medical personnel. Obtain Bee Bopper/wasp spray and yellow jacket traps. Locate dumpsters/trash, food and feeding areas away from sleeping and assembly areas.	Moderate
Snags	Conduct on-going risk analysis of all work areas. Follow Hazard Tree Safety Guidelines (IRPG page 22). Ensure use of protective equipment.	High
Transportation	Signing of all incident roads that provide access to divisions. Daily updated travel plan maps. In local communities obey the posted speed limits. Use reader boards to control entry as needed. Identify and evaluate contingency and alternate escape and travel routes, implement controls as needed. Practice defensive driving. Maintain an awareness of wildlife, rock fall and heavy truck traffic. Reduce speed and increase following distance as needed.	High
Aircraft	Ensure all resources are a safe distance from all bucket and retardant drops. Establish LCES. Utilize air to ground primary radio channel. Reference IRPG (Safe aircraft operations pg. 56-58). Ensure IA resources have coordination with unassigned local air resources to provide deconfliction.	High
Public Interaction	Implement road and area closures in and adjacent to the perimeter.	Moderate
Heavy Equipment	Post lookouts around equipment work areas. Establish communications with equipment boss and operator. Do not work down slope from equipment. Familiarize crews with specialty equipment and processes.	High

Division/Group Assignment List (ICS 204 WF)
Controlled Unclassified Information//Basic

1. Incident Name:			3.			
ARCHIE CREEK			Branch:		Division/Group:	
2. Operational Period: DAY			A/R/S			
Date/Time From: 10/08/2020 0700 THU		Date/Time To: 10/08/2020 1900 THU				
4. Operations Personnel						
OPERATIONS CHIEF		JEFF BOUSCHOR; TONY ENGEL MATT CASTLE		DIVISION/GROUP SUPERVISOR		LARRY LEACH
AIR ATTACK SUPERVISOR		TIM LYDA		SAFETY OFFICER		TROY CORN JACK CATES
5. Resources Assigned this Period						
Strike Team / Task Force / Resource Designator		LWD	Leader	Number Persons	Drop Off PT./Time	Pick Up PT./Time
O-589.8 SOFR		10/18	CODY TRABER	1	ARCHIE CK ICP/0700	ARCHIE CK ICP/1900
O-444 TFLD		10/07	NOLAN ROTH	1	ARCHIE CK ICP/0700	ARCHIE CK ICP/1900
O-464 TFLD		10/10	JESSICA HILFERS	1	ARCHIE CK ICP/0700	ARCHIE CK ICP/1900
O-453 HEQB (T)		10/08	ZACHARY FAULK	1	ARCHIE CK ICP/0700	ARCHIE CK ICP/1900
E-312 EXCA WARREN PARTRIDGE CONTR		10/14	MICHELLE PARTRIDGE	1	ARCHIE CK ICP/0700	ARCHIE CK ICP/1900
E-142 ENG4 J3 CONTRACTING		10/08	MESHEL RAD	3	ARCHIE CK ICP/0700	ARCHIE CK ICP/1900
E-383 ENG3 OR-UPF		10/15	MARISSA DUARTE	5	ARCHIE CK ICP/0700	ARCHIE CK ICP/1900
O-359 FFT2 (W/ READS)		10/03	BENJAMIN PURSLEY	1	ARCHIE CK ICP/0700	ARCHIE CK ICP/1900
O-360 REAF		10/03	ALAN HEATH	1	ARCHIE CK ICP/0700	ARCHIE CK ICP/1900
O-482 READ		10/21	JOSHUA CHAPMAN	1	ARCHIE CK ICP/0700	ARCHIE CK ICP/1900
O-502 ARCH		10/12	TROY FERONE	1	ARCHIE CK ICP/0700	ARCHIE CK ICP/1900
O-331 EMTF		10/09	NICHOLAS EBLIN	1	ARCHIE CK ICP/0700	ARCHIE CK ICP/1900
O-430 REMS BEYOND THE EDGE		10/13	RAY STORM	4	ARCHIE CK ICP/0700	ARCHIE CK ICP/1900
E-175 AMBU AMR MEDIC 3		10/19	SEAN RAWSON	2	ARCHIE CK ICP/0700	ARCHIE CK ICP/1900
6. Control Operations/Work Assignments:						
Task: Patrol and Mop-up as needed. Complete suppression repair per repair plan standards. Purpose: Continue to protect values and limit resource damage through suppression efforts. End State: To eliminate the threat to improvements and timber values.						
7. Special Instructions:						
8. Division/Group Communication Summary						
Function	Channel	RX Frequency N/W	RX Tone/NAC	TX Frequency N/W	TX Tone/NAC	Mode
TACTICAL	1	168.0500N	123.0	168.0500N	123.0	A
COMMAND	7	171.8250N	123.0	168.4250N	123.0	A
COMMAND	9	170.4500N	123.0	168.1000N	123.0	A
AIR TO GROUND	14	172.6750N		172.6750N		A
9. Prepared By (Resource Unit Leader)			Approved By (Planning Section Chief)		Date	Time
JILL JOHNSON			MARGE HUTCHINSON		10/07/2020	2000

Division/Group Assignment List (ICS 204 WF)
Controlled Unclassified Information//Basic

1. Incident Name:			3.			
ARCHIE CREEK			Branch:		Division/Group:	
2. Operational Period: DAY			F/H/K			
Date/Time From: 10/08/2020 0700 THU		Date/Time To: 10/08/2020 1900 THU				
4. Operations Personnel						
OPERATIONS CHIEF		JEFF BOUSCHOR; TONY ENGEL MATT CASTLE		DIVISION/GROUP SUPERVISOR		MATT KENNEDY
AIR ATTACK SUPERVISOR		TIM LYDA		SAFETY OFFICER		TROY CORN JACK CATES
5. Resources Assigned this Period						
Strike Team / Task Force / Resource Designator		LWD	Leader	Number Persons	Drop Off PT./Time	Pick Up PT./Time
O-589.8 SOFR		10/18	CODY TRABER	1	ARCHIE CK ICP/0700	ARCHIE CK ICP/1900
O-261 TFLD		10/08	JOHN S RYAN	1	ARCHIE CK ICP/0700	ARCHIE CK ICP/1900
O-314 FMOD C & K WILDLAND FIRE 6 (R&R 10/9-10/10)		10/08	RICKIE HUNT	2	ARCHIE CK ICP/0700	ARCHIE CK ICP/1900
C-61 HC2I PACIFIC OASIS WILDFIRE 9B		10/08	PACIFIC OASIS	18	ARCHIE CK ICP/0700	ARCHIE CK ICP/1900
E-239 ENG6 AMERICAN FIRE FIGHTING CO		10/09	MIKE RIDEOUT	3	ARCHIE CK ICP/0700	ARCHIE CK ICP/1900
E-151 SKG2 WYEAST FORESTRY MANAGEMENT		10/08	HARRY HERMAN BREEZY HERMAN	2	ARCHIE CK ICP/0700	ARCHIE CK ICP/1900
E-316 EXCA SANTUCCI RANCH TURF		10/10	BRAD SANTUCCI	2	ARCHIE CK ICP/0700	ARCHIE CK ICP/1900
E-320 CHIP HARRIS CREW 6 LLC		10/09	BUTCH SUNKLER	2	ARCHIE CK ICP/0700	ARCHIE CK ICP/1900
E-327 CHIP A&H FORESTRY, LLC		10/10	DREW STONEBERG	2	ARCHIE CK ICP/0700	ARCHIE CK ICP/1900
E-310 TUB GRINDER NEXTERRA		10/15	JOE NUPPBROCK	1	ARCHIE CK ICP/0700	ARCHIE CK ICP/1900
E-431 LDFR DEAN INNOVATIONS		01/27	ARTURO MICHEL	1	ARCHIE CK ICP/0700	ARCHIE CK ICP/1900
E-433 TDMP CLINT HATFIELD TRUCKING		10/20	BRIAN DELCOLLO	1	ARCHIE CK ICP/0700	ARCHIE CK ICP/1900
E-434 TDMP DEAN INNOVATIONS, DUMP TRUCK		10/19	MARSHALL MILLS	1	ARCHIE CK ICP/0700	ARCHIE CK ICP/1900
O-359 FFT2 (W/ READS)		10/03	BENJAMIN PURSLEY	1	ARCHIE CK ICP/0700	ARCHIE CK ICP/1900
O-360 REAF		10/03	ALAN HEATH	1	ARCHIE CK ICP/0700	ARCHIE CK ICP/1900
O-450 READ			RON MCMULLIN	1	ARCHIE CK ICP/0700	ARCHIE CK ICP/1900
O-482 READ		10/21	JOSHUA CHAPMAN	1	ARCHIE CK ICP/0700	ARCHIE CK ICP/1900
8. Division/Group Communication Summary						
Function	Channel	RX Frequency N/W	RX Tone/NAC	TX Frequency N/W	TX Tone/NAC	Mode
TACTICAL	2	168.2000N	123.0	168.2000N	123.0	A
COMMAND	10	169.5375N	123.0	164.7125N	123.0	A
COMMAND	13	170.5500N	103.5	164.8000N	192.8	A
AIR TO GROUND	14	172.6750N		172.6750N		A
9. Prepared By (Resource Unit Leader)			Approved By (Planning Section Chief)		Date	Time
JILL JOHNSON			MARGE HUTCHINSON		10/07/2020	2000

Division/Group Assignment List (ICS 204 WF)
Controlled Unclassified Information//Basic

1. Incident Name:				3.		
ARCHIE CREEK				Branch:	Division/Group: N/Q	
2. Operational Period: DAY						
Date/Time From: 10/08/2020 0700 THU		Date/Time To: 10/08/2020 1900 THU				
4. Operations Personnel						
OPERATIONS CHIEF		JEFF BOUSCHOR; TONY ENGEL MATT CASTLE		DIVISION/GROUP SUPERVISOR		MICHAEL JACKSON
AIR ATTACK SUPERVISOR		TIM LYDA		SAFETY OFFICER		TROY CORN JACK CATES
5. Resources Assigned this Period						
Strike Team / Task Force / Resource Designator		LWD	Leader	Number Persons	Drop Off PT./Time	Pick Up PT./Time
O-561 SOF1 (T)		10/15	JOHN FUGITT	1	ARCHIE CK ICP/0700	ARCHIE CK ICP/1900
O-515 TFLD		10/13	THADDEUS NIEBEL	1	ARCHIE CK ICP/0700	ARCHIE CK ICP/1900
O-454 HEQB (T)		10/08	JUSTIN HADWEN	1	ARCHIE CK ICP/0700	ARCHIE CK ICP/1900
O-96 FMOD STUFFLEBEAM		10/12	JAMES BORG	2	ARCHIE CK ICP/0700	ARCHIE CK ICP/1900
C-62 HC2I SES AHTANUM		10/08	JASON HOERNER	20	ARCHIE CK ICP/0700	ARCHIE CK ICP/1900
C-70 HC2I UMPQUA NORTH ZONE #3		10/19	SKYLER SHRUM	17	ARCHIE CK ICP/0700	ARCHIE CK ICP/1900
E-232 ENG4 WILDFIRE SERVICES 5		10/17	JASON SARE	3	ARCHIE CK ICP/0700	ARCHIE CK ICP/1900
E-353 ENG4 FOREST SERVICE		10/11	LUKE TALCOTT	8	ARCHIE CK ICP/0700	ARCHIE CK ICP/1900
E-365 ENG3 ORUPF ENGINE 14		10/13	IAN PROFITT	4	ARCHIE CK ICP/0700	ARCHIE CK ICP/1900
E-9 ENG6 FIRST STRIKE		10/09	ARMONDO OZUMA	2	ARCHIE CK ICP/0700	ARCHIE CK ICP/1900
E-109 WTS2 IRELAND INC 81		10/17	CRAIG VEY	1	ARCHIE CK ICP/0700	ARCHIE CK ICP/1900
E-98 DOZ3 MARK JONES TRUCKING TD12		10/19	EVERETT JONES	2	ARCHIE CK ICP/0700	ARCHIE CK ICP/1900
E-244 DOZ3 PACIFIC RIDGELINE FORESTRY		10/17	TONY BALDWIN	2	ARCHIE CK ICP/0700	ARCHIE CK ICP/1900
E-313 EXCA OWENS FREIGHT LINES, INC		10/10	RHETT SMITH	2	ARCHIE CK ICP/0700	ARCHIE CK ICP/1900
E-337 EXCA MASTICATOR-BOOM MOUNTED,T3		10/11	DOUG STAFF	2	ARCHIE CK ICP/0700	ARCHIE CK ICP/1900
E-357 EXCA MARK JONES TRUCKING		10/12	MARK JONES	2	ARCHIE CK ICP/0700	ARCHIE CK ICP/1900
E-90 FEL2 MARK JONES TRUCKING		10/15	MARK GODWIN	1	ARCHIE CK ICP/0700	ARCHIE CK ICP/1900
8. Division/Group Communication Summary						
Function	Channel	RX Frequency N/W	RX Tone/NAC	TX Frequency N/W	TX Tone/NAC	Mode
TACTICAL	5	166.7750N	123.0	166.7750N	123.0	A
COMMAND	8	173.5000N	123.0	168.5625N	123.0	A
COMMAND	9	170.4500N	123.0	168.1000N	123.0	A
AIR TO GROUND	14	172.6750N		172.6750N		A
9. Prepared By (Resource Unit Leader)			Approved By (Planning Section Chief)		Date	Time
JILL JOHNSON			MARGE HUTCHINSON		10/07/2020	2000

Division/Group Assignment List (ICS 204 WF)
Controlled Unclassified Information//Basic

1. Incident Name:				3.		
ARCHIE CREEK				Branch:	Division/Group: N/Q	
2. Operational Period: DAY						
Date/Time From: 10/08/2020 0700 THU		Date/Time To: 10/08/2020 1900 THU				
4. Operations Personnel						
OPERATIONS CHIEF		JEFF BOUSCHOR; TONY ENGEL MATT CASTLE		DIVISION/GROUP SUPERVISOR		MICHAEL JACKSON
AIR ATTACK SUPERVISOR		TIM LYDA		SAFETY OFFICER		TROY CORN JACK CATES
5. Resources Assigned this Period						
Strike Team / Task Force / Resource Designator		LWD	Leader	Number Persons	Drop Off PT./Time	Pick Up PT./Time
E-161 MAST JERRY SWEARINGEN CONSTR		10/14	JERRY SWEARINGEN	2	ARCHIE CK ICP/0700	ARCHIE CK ICP/1900
E-384 CHIP ZEBS TREE SVC		10/15	JORDAN ALLBRITTON	2	ARCHIE CK ICP/0700	ARCHIE CK ICP/1900
E-385 CHIP PACIFIC RIDGLELINE		10/16	GARY WYLEY	1	ARCHIE CK ICP/0700	ARCHIE CK ICP/1900
E-386 CHIP SAYLOR CONSTRUCTION		10/20	RYAN SAYLOR	1	ARCHIE CK ICP/0700	ARCHIE CK ICP/1900
E-319 CHIP PACIFIC RIDGELINE FORESTRY LLC		10/09		2	ARCHIE CK ICP/0700	ARCHIE CK ICP/1900
E-48 LOG MARK JONES TRUCKING, INC.		10/18	JUSTIN CAMDEN	1	ARCHIE CK ICP/0700	ARCHIE CK ICP/1900
E-49 LOG MARK JONES TRUCKING, INC.		10/06	RICK SMITH	1	ARCHIE CK ICP/0700	ARCHIE CK ICP/1900
E-92 LDFR NW LOGGING INC		09/28	ROSS PAINTER	2	ARCHIE CK ICP/0700	ARCHIE CK ICP/1900
O-66 REAF		09/24	JESSE SOY	1	ARCHIE CK ICP/0700	ARCHIE CK ICP/1900
O-140 READ		09/24	CHRIS WOODCOCK	1	ARCHIE CK ICP/0700	ARCHIE CK ICP/1900
O-360 REAF		10/03	ALAN HEATH	1	ARCHIE CK ICP/0700	ARCHIE CK ICP/1900
O-384 REAF (T)		10/06	JOHN ANTHONY	1	ARCHIE CK ICP/0700	ARCHIE CK ICP/1900
O-482 READ		10/21	JOSHUA CHAPMAN	1	ARCHIE CK ICP/0700	ARCHIE CK ICP/1900
O-486 REAF (T)		10/10	DANE SJODEN	1	ARCHIE CK ICP/0700	ARCHIE CK ICP/1900
O-502 ARCH		10/12	TROY FERONE	1	ARCHIE CK ICP/0700	ARCHIE CK ICP/1900
O-382 REM DOUGLAS CO		10/19	NICK WECKS	4	ARCHIE CK ICP/0700	ARCHIE CK ICP/1900
E-29 AMBU MEDIC 1		10/06	HUDSON/PLUMMER	2	ARCHIE CK ICP/0700	ARCHIE CK ICP/1900
E-291 AMBU MEDIC 5		10/08	GREG EDWARDS	2	ARCHIE CK ICP/0700	ARCHIE CK ICP/1900
8. Division/Group Communication Summary						
Function	Channel	RX Frequency N/W	RX Tone/NAC	TX Frequency N/W	TX Tone/NAC	Mode
TACTICAL	5	166.7750N	123.0	166.7750N	123.0	A
COMMAND	8	173.5000N	123.0	168.5625N	123.0	A
COMMAND	9	170.4500N	123.0	168.1000N	123.0	A
AIR TO GROUND	14	172.6750N		172.6750N		A
9. Prepared By (Resource Unit Leader)			Approved By (Planning Section Chief)		Date	Time
JILL JOHNSON			MARGE HUTCHINSON		10/07/2020	2000

Division/Group Assignment List (ICS 204 WF)
Controlled Unclassified Information//Basic

1. Incident Name:			3.			
ARCHIE CREEK			Branch:		Division/Group:	
2. Operational Period: DAY			N/Q			
Date/Time From: 10/08/2020 0700 THU		Date/Time To: 10/08/2020 1900 THU				
4. Operations Personnel						
OPERATIONS CHIEF		JEFF BOUSCHOR; TONY ENGEL MATT CASTLE		DIVISION/GROUP SUPERVISOR		MICHAEL JACKSON
AIR ATTACK SUPERVISOR		TIM LYDA		SAFETY OFFICER		TROY CORN JACK CATES
5. Resources Assigned this Period						
Strike Team / Task Force / Resource Designator		LWD	Leader	Number Persons	Drop Off PT./Time	Pick Up PT./Time
6. Control Operations/Work Assignments:						
<p>Task: Continue to secure lines, mop up and patrol to the extent necessary to ensure fire stays within established control features. Continue suppression repair per repair plan standards. Reduce Danger trees along 4712 road.</p> <p>Purpose: Protection of timber resources and improvements. Allow current and future work forces to safely travel along the road corridors.</p> <p>End State: To eliminate the threat to improvements and timber values. Reduce hazards along road system.</p>						
7. Special Instructions:						
8. Division/Group Communication Summary						
Function	Channel	RX Frequency N/W	RX Tone/NAC	TX Frequency N/W	TX Tone/NAC	Mode
TACTICAL	5	166.7750N	123.0	166.7750N	123.0	A
COMMAND	8	173.5000N	123.0	168.5625N	123.0	A
COMMAND	9	170.4500N	123.0	168.1000N	123.0	A
AIR TO GROUND	14	172.6750N		172.6750N		A
9. Prepared By (Resource Unit Leader)			Approved By (Planning Section Chief)		Date	Time
JILL JOHNSON			MARGE HUTCHINSON		10/07/2020	2000

Division/Group Assignment List (ICS 204 WF)
Controlled Unclassified Information//Basic

1. Incident Name:			3.			
ARCHIE CREEK			Branch:		Division/Group:	
2. Operational Period: DAY			WRIGHT CREEK			
Date/Time From: 10/08/2020 0700 THU		Date/Time To: 10/08/2020 1900 THU				
4. Operations Personnel						
OPERATIONS CHIEF		JEFF BOUSCHOR; TONY ENGEL MATT CASTLE		DIVISION/GROUP SUPERVISOR		BOB HINDS JAMES DICKINSON (T)
AIR ATTACK SUPERVISOR		TIM LYDA		SAFETY OFFICER		TROY CORN JACK CATES
5. Resources Assigned this Period						
Strike Team / Task Force / Resource Designator		LWD	Leader	Number Persons	Drop Off PT./Time	Pick Up PT./Time
O-488 SOFR		10/10	CHAD HYATT	1	ARCHIE CK ICP/0700	ARCHIE CK ICP/1900
O-550 SOFR (T)		10/15	RICHARD GILLASPY	1	ARCHIE CK ICP/0700	ARCHIE CK ICP/1900
O-524 TFLD		10/13	ERIC ANDERSON	1	ARCHIE CK ICP/0700	ARCHIE CK ICP/1900
O-598 HEQB		10/17	JOHN CAROON	1	ARCHIE CK ICP/0700	ARCHIE CK ICP/1900
O-607 HEQB (T)		10/17	KENNY LEMMONDS	1	ARCHIE CK ICP/0700	ARCHIE CK ICP/1900
O-14 FMOD TIMBER TIPPER (R&R 10/7-10/8)		10/06	C. ABAUGH/G. REDDEKOPP	2	ARCHIE CK ICP/0700	ARCHIE CK ICP/1900
O-313 FMOD C & K WILDLAND FIRE (R&R 10/8-10/9)		10/07	JIMMY THOMAS	2	ARCHIE CK ICP/0700	ARCHIE CK ICP/1900
O-361 FMOD TIMBER TIPPER		10/19	RAY SCHLATTER	2	ARCHIE CK ICP/0700	ARCHIE CK ICP/1900
E-317 EXCA T1 MARK JONES TRUCKING		10/10	JOHN JONES	1	ARCHIE CK ICP/0700	ARCHIE CK ICP/1900
E-318 EXCA URE OUTDOORS		10/17	DON GILBERT	1	ARCHIE CK ICP/0700	ARCHIE CK ICP/1900
E-336 EXCA T2 JUSTIN PITTS TRUCKING		10/11	KEN OGDEN	2	ARCHIE CK ICP/0700	ARCHIE CK ICP/1900
E-329 LDFR MILLER TIMBER SVCS 280		10/10	KYLE SWANK	1	ARCHIE CK ICP/0700	ARCHIE CK ICP/1900
E-346 LDFR J&D LOGGING & CONTR		10/13	COLBY BRADFORD	2	ARCHIE CK ICP/0700	ARCHIE CK ICP/1900
E-347 LDFR J&D LOGGING & CONTR		10/13	JOHN SANOWSKI	2	ARCHIE CK ICP/0700	ARCHIE CK ICP/1900
E-8191 LDFR MARK JONES TRUCKING		10/07	BILL DELANEY		ARCHIE CK ICP/0700	ARCHIE CK ICP/1900
E-341 SKD1 MARK JONES TRUCKING		10/10	SABASTIAN FLORENCE	2	ARCHIE CK ICP/0700	ARCHIE CK ICP/1900
E-360 SKD1 WARREN PARTRIDGE		10/15	WARREN PARTRIDGE	1	ARCHIE CK ICP/0700	ARCHIE CK ICP/1900
E-100 FEL1 PONSEE HARVESTER MILLER		10/18	TREVEN OKES	2	ARCHIE CK ICP/0700	ARCHIE CK ICP/1900
E-8200 TDMP BELLOIR TRUCKING INC		10/11	RANDY BELLOIR	1	ARCHIE CK ICP/0700	ARCHIE CK ICP/1900
8. Division/Group Communication Summary						
Function	Channel	RX Frequency N/W	RX Tone/NAC	TX Frequency N/W	TX Tone/NAC	Mode
TACTICAL	3	168.6000N	123.0	168.6000N	123.0	A
COMMAND	7	171.8250N	123.0	168.4250N	123.0	A
COMMAND	10	169.5375N	123.0	164.7125N	123.0	A
AIR TO GROUND	14	172.6750N		172.6750N		A
9. Prepared By (Resource Unit Leader)			Approved By (Planning Section Chief)		Date	Time
JILL JOHNSON			MARGE HUTCHINSON		10/07/2020	2000

Division/Group Assignment List (ICS 204 WF)
Controlled Unclassified Information//Basic

1. Incident Name:			3.			
ARCHIE CREEK			Branch:		Division/Group:	
2. Operational Period: DAY			WRIGHT CREEK			
Date/Time From: 10/08/2020 0700 THU	Date/Time To: 10/08/2020 1900 THU					
4. Operations Personnel						
OPERATIONS CHIEF		JEFF BOUSCHOR; TONY ENGEL MATT CASTLE		DIVISION/GROUP SUPERVISOR		BOB HINDS JAMES DICKINSON (T)
AIR ATTACK SUPERVISOR		TIM LYDA		SAFETY OFFICER		TROY CORN JACK CATES
5. Resources Assigned this Period						
Strike Team / Task Force / Resource Designator		LWD	Leader	Number Persons	Drop Off PT./Time	Pick Up PT./Time
E-8201 TDMP MARSHALL TRUCKING		10/11	JAMES ROARK	1	ARCHIE CK ICP/0700	ARCHIE CK ICP/1900
O-359 FFT2 (W/ READS)		10/03	BENJAMIN PURSLEY	1	ARCHIE CK ICP/0700	ARCHIE CK ICP/1900
O-360 REAF		10/03	ALAN HEATH	1	ARCHIE CK ICP/0700	ARCHIE CK ICP/1900
O-482 READ		10/21	JOSHUA CHAPMAN	1	ARCHIE CK ICP/0700	ARCHIE CK ICP/1900
O-485 FFT1 (W/ READS)		10/08	CHRISTOPHER MCGRATH	1	ARCHIE CK ICP/0700	ARCHIE CK ICP/1900
O-502 ARCH		10/12	TROY FERONE	1	ARCHIE CK ICP/0700	ARCHIE CK ICP/1900
O-496 EMPF		10/13	CODY BENNETT	1	ARCHIE CK ICP/0700	ARCHIE CK ICP/1900
6. Control Operations/Work Assignments:						
<p>Task: Utilize qualified READ to identify burned and scorched danger trees. Cut, process, remove and sort danger trees that could threaten the 4711 Road (see Archie Creek Suppression Repair Plan). Utilize mechanized equipment to limit exposure to falling and bucking hazards. Use hand falling and bucking only as needed. Transport merchantable material to designated storage areas. Transport non-merchantable material to designated areas for chipping and storage.</p> <p>Purpose: Remove danger trees that could potentially threaten the 4711 Road travel corridor. Prepare and store merchantable logs for disposal. Remove and chip resulting slash to reduce future fire hazard potential.</p> <p>End State: Danger trees are identified by qualified READs and removed based on Archie Creek Fire Repair Plan. Merchantable material is available for disposal and slash hazard is reduced.</p>						
7. Special Instructions:						
8. Division/Group Communication Summary						
Function	Channel	RX Frequency N/W	RX Tone/NAC	TX Frequency N/W	TX Tone/NAC	Mode
TACTICAL	3	168.6000N	123.0	168.6000N	123.0	A
COMMAND	7	171.8250N	123.0	168.4250N	123.0	A
COMMAND	10	169.5375N	123.0	164.7125N	123.0	A
AIR TO GROUND	14	172.6750N		172.6750N		A
9. Prepared By (Resource Unit Leader)			Approved By (Planning Section Chief)		Date	Time
JILL JOHNSON			MARGE HUTCHINSON		10/07/2020	2000

Division/Group Assignment List (ICS 204 WF)
Controlled Unclassified Information//Basic

1. Incident Name:			3.			
ARCHIE CREEK			Branch:		Division/Group:	
2. Operational Period: DAY			DFPA W/T/D/E			
Date/Time From: 10/08/2020 0700 THU		Date/Time To: 10/08/2020 1900 THU				
4. Operations Personnel						
OPERATIONS CHIEF				DIVISION/GROUP SUPERVISOR		PAUL RITTER (541) 580-7149
SAFETY OFFICER						
5. Resources Assigned this Period						
Strike Team / Task Force / Resource Designator		LWD	Leader	Number Persons	Drop Off PT./Time	Pick Up PT./Time
ENG T6 #15-01			K. SMITH (541)530-0477	2		
ENG T6 #11-15			T.BABIKOFF (541)671-3363	2		
ENG T6 #89-88			J. BROWN (541)580-5117	2		
DIVS			B. PETTIBONE (541)733-6188	1		
T6 ODF COLUMBIA CITY			SWENSON (541)580-6596	2		
T6 ODF JOHN DAY			DUNCAN (541)419-0063	3		
T6 ODF PHILOMATH			ORME (541)915-0830	2		
T6 ODF ASTORIA			LIGHTY (541)637-8380	2		
DFPA DOZER #22						
DZOP			DOOLITTLE (541)530-0276	1		
HEQB DFPA #52			HUNTER (541)643-7121	1		
6. Control Operations/Work Assignments:						
<ul style="list-style-type: none"> • Monitor and patrol lines • Backhaul equipment no longer needed • Identify and complete needed suppression repair on private lands • Coordinate and communicate with federal resources and IMT 						
7. Special Instructions:						
8. Division/Group Communication Summary						
Function	Channel	RX Frequency N/W	RX Tone/NAC	TX Frequency N/W	TX Tone/NAC	Mode
TACTICAL	6	151.3400N	156.7	151.3400N	156.7	A
COMMAND	11	151.1600N	146.2	159.4725N	146.2	A
AIR TO GROUND	14	172.6750N		172.6750N		A
AIR TO GROUND	15	172.4625N		172.4625N		A
9. Prepared By (Resource Unit Leader)			Approved By (Planning Section Chief)		Date	Time
JILL JOHNSON			MARGE HUTCHINSON		10/07/2020	2000

Division/Group Assignment List (ICS 204 WF)
Controlled Unclassified Information//Basic

1. Incident Name:				3.		
THIELSEN				Branch: THIELSEN	Division/Group: A/M/P/W	
2. Operational Period: DAY						
Date/Time From: 10/08/2020 0700 THU		Date/Time To: 10/08/2020 1900 THU				
4. Operations Personnel						
OPERATIONS CHIEF		JEFF BOUSCHOR; TONY ENGEL MATT CASTLE		BRANCH DIRECTOR		AARON ROWE
DIVISION/GROUP SUPERVISOR		CODY ACORD CHRIS WHITE (T)		SAFETY OFFICER		TROY CORN JACK CATES
5. Resources Assigned this Period						
Strike Team / Task Force / Resource Designator	LWD	Leader	Number Persons	Drop Off PT./Time	Pick Up PT./Time	
O-549 SOF1	10/14	IVAN CUPP	1	THIELSEN SPIKE/0700	THIELSEN SPIKE/1900	
O-589.2 SOF2	10/18	TODD CAMM	1	THIELSEN SPIKE/0700	THIELSEN SPIKE/1900	
O-186 TFLD	10/16	LEE MICHAEL NELSON	1	THIELSEN SPIKE/0700	THIELSEN SPIKE/1900	
O-95 HEQB (T)	10/11	DUSTIN APPLETON	1	THIELSEN SPIKE/0700	THIELSEN SPIKE/1900	
O-96 HEQB	10/11	JAMES LINDSAY	1	THIELSEN SPIKE/0700	THIELSEN SPIKE/1900	
O-125 HEQB (T)	10/20	MAX LEIDENFROST	1	THIELSEN SPIKE/0700	THIELSEN SPIKE/1900	
C-11 HC2 MOSQUEDA REFORESTATION	10/09	SAUL EQUIHUA	20	THIELSEN SPIKE/0700	THIELSEN SPIKE/1900	
E-223 ENG6 LONE WOLF WILDFIRE 42	10/08	DAVE SARANTO	3	THIELSEN SPIKE/0700	THIELSEN SPIKE/1900	
E-247 ENG6 JR WILDFIRE 07	10/08	JAMES RETTSTATT	3	THIELSEN SPIKE/0700	THIELSEN SPIKE/1900	
E-52 ENG6 CONTRACT WATER WAGON	10/09	MUSIA MICHAEL	2	THIELSEN SPIKE/0700	THIELSEN SPIKE/1900	
E-8 DOZ3 BOB MURRAY LOGGING	10/09	GARCIA UNDERWOOD	1	THIELSEN SPIKE/0700	THIELSEN SPIKE/1900	
E-109 SKD1 MARK JONES TRUCKING	10/10	WILL DUFFIELD	2	THIELSEN SPIKE/0700	THIELSEN SPIKE/1900	
E-54 EXCA B ROCK READY	10/16	GLEN ROBINSON	1	THIELSEN SPIKE/0700	THIELSEN SPIKE/1900	
E-147 EXCA SCOTT MARSHALL TRUCKING	10/13	SCOTT MARSHALL	1	THIELSEN SPIKE/0700	THIELSEN SPIKE/1900	
E-45 FEL1 MARK JONES TRUCKING	10/08	TYLER LARCEY	2	THIELSEN SPIKE/0700	THIELSEN SPIKE/1900	
E-335 GRINDER		RAY BREWINGTON	2	THIELSEN SPIKE/0700	THIELSEN SPIKE/1900	
O-6 READ	10/10	JEDIDIAH HANCOCK	1	THIELSEN SPIKE/0700	THIELSEN SPIKE/1900	
O-134 REAF	10/11	SOPHIA KIM	1	THIELSEN SPIKE/0700	THIELSEN SPIKE/1900	
8. Division/Group Communication Summary						
Function	Channel	RX Frequency N/W	RX Tone/NAC	TX Frequency N/W	TX Tone/NAC	Mode
COMMAND	1	171.4250N	103.5	166.0000N	192.8	A
TACTICAL	5	168.2625N	103.5	168.2625N	103.5	A
AIR TO GROUND	13	171.1125N		171.1125N		A
9. Prepared By (Resource Unit Leader)		Approved By (Planning Section Chief)		Date	Time	
JILL JOHNSON		MARGE HUTCHINSON		10/07/2020	2045	

Division/Group Assignment List (ICS 204 WF)
Controlled Unclassified Information//Basic

1. Incident Name:			3.			
THIELSEN			Branch:		Division/Group:	
2. Operational Period: DAY			THIELSEN		A/M/P/W	
Date/Time From: 10/08/2020 0700 THU		Date/Time To: 10/08/2020 1900 THU				
4. Operations Personnel						
OPERATIONS CHIEF		JEFF BOUSCHOR; TONY ENGEL MATT CASTLE		BRANCH DIRECTOR		AARON ROWE
DIVISION/GROUP SUPERVISOR		CODY ACORD CHRIS WHITE (T)		SAFETY OFFICER		TROY CORN JACK CATES
5. Resources Assigned this Period						
Strike Team / Task Force / Resource Designator		LWD	Leader	Number Persons	Drop Off PT./Time	Pick Up PT./Time
O-59 EMTP		10/09	MATTHEW STIVERS	1	THIELSEN SPIKE/0700	THIELSEN SPIKE/1900
O-157 EMTF		10/13	DALE HOOVER	1	THIELSEN SPIKE/0700	THIELSEN SPIKE/1900
O-175 EMTF		10/15	CAYLA FORSYTHE	1	THIELSEN SPIKE/0700	THIELSEN SPIKE/1900
O-328 EMPF		10/11		1	THIELSEN SPIKE/0700	THIELSEN SPIKE/1900
E-71 AMBU AMBO 1571		10/12		1	THIELSEN SPIKE/0700	THIELSEN SPIKE/1900
E-72 AMBU MED TRANSPORT		10/10	CHRIS ARVIDSON	2	THIELSEN SPIKE/0700	THIELSEN SPIKE/1900
6. Control Operations/Work Assignments:						
Task: Patrol and Mop-up as needed. Complete suppression repair per repair plan standards. Purpose: Continue to protect values and limit resource damage through suppression efforts. End State: To eliminate the threat to values at risk.						
7. Special Instructions:						
8. Division/Group Communication Summary						
Function	Channel	RX Frequency N/W	RX Tone/NAC	TX Frequency N/W	TX Tone/NAC	Mode
COMMAND	1	171.4250N	103.5	166.0000N	192.8	A
TACTICAL	5	168.2625N	103.5	168.2625N	103.5	A
AIR TO GROUND	13	171.1125N		171.1125N		A
9. Prepared By (Resource Unit Leader)			Approved By (Planning Section Chief)		Date	Time
JILL JOHNSON			MARGE HUTCHINSON		10/07/2020	2045

Division/Group Assignment List (ICS 204 WF)
Controlled Unclassified Information//Basic

1. Incident Name:				3.		
THIELSEN				Branch: THIELSEN	Division/Group: NORTH DIAMOND	
2. Operational Period: DAY						
Date/Time From: 10/08/2020 0700 THU		Date/Time To: 10/08/2020 1900 THU				
4. Operations Personnel						
OPERATIONS CHIEF		JEFF BOUSCHOR; TONY ENGEL MATT CASTLE		BRANCH DIRECTOR		AARON ROWE
DIVISION/GROUP SUPERVISOR		RICHARD TINGLE		SAFETY OFFICER		TROY CORN JACK CATES
5. Resources Assigned this Period						
Strike Team / Task Force / Resource Designator	LWD	Leader	Number Persons	Drop Off PT./Time	Pick Up PT./Time	
O-549 SOF1	10/14	IVAN CUPP	1	THIELSEN SPIKE/0700	THIELSEN SPIKE/1900	
O-589.2 SOF2	10/18	TODD CAMM	1	THIELSEN SPIKE/0700	THIELSEN SPIKE/1900	
O- TFLD	10/16	JED GETMAN	1	THIELSEN SPIKE/0700	THIELSEN SPIKE/1900	
O-19 TFLD	10/10	BRIAN SMITH	1	THIELSEN SPIKE/0700	THIELSEN SPIKE/1900	
O-646 TFLD	10/21	MEREDITH CHILDS	1	THIELSEN SPIKE/0700	THIELSEN SPIKE/1900	
O-18 HEQB	10/11	MICHAEL KARR	1	THIELSEN SPIKE/0700	THIELSEN SPIKE/1900	
O-79 FMOD GOODSON LOGGING	10/18	NATHANIEL ZELLER	2	THIELSEN SPIKE/0700	THIELSEN SPIKE/1900	
O-85 FMOD C & K WILDLAND FIRE	10/08	SHAWN WILLIS	2	THIELSEN SPIKE/0700	THIELSEN SPIKE/1900	
E-9000 ENG3 UMPQUA 334	10/09	TOMMY DAVIS	8	THIELSEN SPIKE/0700	THIELSEN SPIKE/1900	
E-97 WTT2 ALL WET WATER TRUCKING	10/18	RICK BASSONETT	1	THIELSEN SPIKE/0700	THIELSEN SPIKE/1900	
E-35 DOZ3 PJF INC	10/13	AARON FENTER	2	THIELSEN SPIKE/0700	THIELSEN SPIKE/1900	
E-149 DOZ1 MARK JONES	10/14	KEEGAN COOPER	2	THIELSEN SPIKE/0700	THIELSEN SPIKE/1900	
E-55 CHIP VALLEY TIMBER INC.	10/09		2	THIELSEN SPIKE/0700	THIELSEN SPIKE/1900	
E-29 EXCA DENNY POTTER LOGGING	10/09	RAY ADAMS	2	THIELSEN SPIKE/0700	THIELSEN SPIKE/1900	
E-144 EXCA FS 1990	10/13			THIELSEN SPIKE/0700	THIELSEN SPIKE/1900	
E-148 EXCA SHAD STUFFLEBEAM	10/13	JOE LILLIE	1	THIELSEN SPIKE/0700	THIELSEN SPIKE/1900	
E-314 EXCA TABLE MOUNTAIN FORESTRY	10/14	MICHELE PARTRIDGE	1	THIELSEN SPIKE/0700	THIELSEN SPIKE/1900	
E-315 EXCA TABLE ROCK FORESTRY	10/10	ART LACEY	2	THIELSEN SPIKE/0700	THIELSEN SPIKE/1900	
E-362 EXCA	10/15		2	THIELSEN SPIKE/0700	THIELSEN SPIKE/1900	
E-44 FEL2 RUDE LOGGING/ FEL2	10/16	STEVE KOWING	2	THIELSEN SPIKE/0700	THIELSEN SPIKE/1900	
8. Division/Group Communication Summary						
Function	Channel	RX Frequency N/W	RX Tone/NAC	TX Frequency N/W	TX Tone/NAC	Mode
COMMAND	1	171.4250N	103.5	166.0000N	192.8	A
TACTICAL	4	169.1250N	103.5	169.1250N	103.5	A
AIR TO GROUND	13	171.1125N		171.1125N		A
9. Prepared By (Resource Unit Leader)			Approved By (Planning Section Chief)		Date	Time
JILL JOHNSON			MARGE HUTCHINSON		10/07/2020	2045

Division/Group Assignment List (ICS 204 WF)
Controlled Unclassified Information//Basic

1. Incident Name:				3.			
THIELSEN				Branch:		Division/Group:	
2. Operational Period: DAY				THIELSEN		NORTH DIAMOND	
Date/Time From: 10/08/2020 0700 THU		Date/Time To: 10/08/2020 1900 THU					
4. Operations Personnel							
OPERATIONS CHIEF		JEFF BOUSCHOR; TONY ENGEL MATT CASTLE		BRANCH DIRECTOR		AARON ROWE	
DIVISION/GROUP SUPERVISOR		RICHARD TINGLE		SAFETY OFFICER		TROY CORN JACK CATES	
5. Resources Assigned this Period							
Strike Team / Task Force / Resource Designator		LWD	Leader	Number Persons	Drop Off PT./Time	Pick Up PT./Time	
E-156 FEL1 RUDE LOGGING		10/15	SHAWN SKIDGEL	1	THIELSEN SPIKE/0700	THIELSEN SPIKE/1900	
E-132 TUB GRINDER LANE FORESTRY		10/12	JOE TURNEY	1	THIELSEN SPIKE/0700	THIELSEN SPIKE/1900	
E-151 SKD2 DAMON LOGGING		10/15	DAN KOMNING	2	THIELSEN SPIKE/0700	THIELSEN SPIKE/1900	
E-152 SKD2 MID VALLEY RANCH		10/14	BRAD HELLENTHAL	2	THIELSEN SPIKE/0700	THIELSEN SPIKE/1900	
E-145 LDFR FS 6304		10/13			THIELSEN SPIKE/0700	THIELSEN SPIKE/1900	
E-153 LDFR LANE FOREST PRODUCTS		10/14	DARREL BOOTS	1	THIELSEN SPIKE/0700	THIELSEN SPIKE/1900	
E-42 LOG SELF LOADER MARK JONES		10/15	WILLIAM HOOVER	1	THIELSEN SPIKE/0700	THIELSEN SPIKE/1900	
E-138 TDMP FS 2943		10/13		1	THIELSEN SPIKE/0700	THIELSEN SPIKE/1900	
E-139 TDMP FS 4018		10/13		1	THIELSEN SPIKE/0700	THIELSEN SPIKE/1900	
E-140 TDMP FS 6303		10/13		1	THIELSEN SPIKE/0700	THIELSEN SPIKE/1900	
E-154 TDMP DEAN INNOVATIONS,		10/14	NICK ROPKINS	1	THIELSEN SPIKE/0700	THIELSEN SPIKE/1900	
E-155 TDMP DEAN INNOVATIONS		10/14	BRANDEN ROBERTS	1	THIELSEN SPIKE/0700	THIELSEN SPIKE/1900	
E-141 TCTL FS 4020 TILT BED TRANSPORT		10/13			THIELSEN SPIKE/0700	THIELSEN SPIKE/1900	
E-142 TCTL FS PUP TRAILER		10/13			THIELSEN SPIKE/0700	THIELSEN SPIKE/1900	
E-143 GRD GRADER FS 6302		10/13			THIELSEN SPIKE/0700	THIELSEN SPIKE/1900	
O-149 REAF (T)		10/12	ERIC MICHAEL HELEBRANT	1	THIELSEN SPIKE/0700	THIELSEN SPIKE/1900	
8. Division/Group Communication Summary							
Function	Channel	RX Frequency N/W	RX Tone/NAC	TX Frequency N/W	TX Tone/NAC	Mode	
COMMAND	1	171.4250N	103.5	166.0000N	192.8	A	
TACTICAL	4	169.1250N	103.5	169.1250N	103.5	A	
AIR TO GROUND	13	171.1125N		171.1125N		A	
9. Prepared By (Resource Unit Leader)			Approved By (Planning Section Chief)		Date	Time	
JILL JOHNSON			MARGE HUTCHINSON		10/07/2020	2045	

Division/Group Assignment List (ICS 204 WF)
Controlled Unclassified Information//Basic

1. Incident Name:			3.			
THIELSEN			Branch:		Division/Group:	
2. Operational Period: DAY			THIELSEN		NORTH DIAMOND	
Date/Time From: 10/08/2020 0700 THU	Date/Time To: 10/08/2020 1900 THU					
4. Operations Personnel						
OPERATIONS CHIEF		JEFF BOUSCHOR; TONY ENGEL MATT CASTLE		BRANCH DIRECTOR		AARON ROWE
DIVISION/GROUP SUPERVISOR		RICHARD TINGLE		SAFETY OFFICER		TROY CORN JACK CATES
5. Resources Assigned this Period						
Strike Team / Task Force / Resource Designator		LWD	Leader	Number Persons	Drop Off PT./Time	Pick Up PT./Time
6. Control Operations/Work Assignments:						
<p>Task: Remove all Danger Trees within 150ft of road. Improve ingress and egress from the 005 to Hwy 138. Deck merchantable logs. Tub Grind non-merch and spread chips.</p> <p>Purpose: Protect life and property from fire weakened trees.</p> <p>End State: Trees are removed from roadways to create future contingency lines for Diamond Lake Community.</p>						
7. Special Instructions:						
8. Division/Group Communication Summary						
Function	Channel	RX Frequency N/W	RX Tone/NAC	TX Frequency N/W	TX Tone/NAC	Mode
COMMAND	1	171.4250N	103.5	166.0000N	192.8	A
TACTICAL	4	169.1250N	103.5	169.1250N	103.5	A
AIR TO GROUND	13	171.1125N		171.1125N		A
9. Prepared By (Resource Unit Leader)			Approved By (Planning Section Chief)		Date	Time
JILL JOHNSON			MARGE HUTCHINSON		10/07/2020	2045

AIR OPERATIONS SUMMARY 220		Prepared By: Tim Lyda	Prepared: 10/07/2020		Prepared Time: 1600			
1. INCIDENT NAME: ARCHIE CREEK		2. OPERATIONAL PERIOD 10/08/2020		START TIME: 0800	END TIME: 2000	SUNRISE: 0718	SUNSET: 1839	Pumpkin: 1909

3. REMARKS (Safety Notes, Hazards, Air Operations Special Equipment, etc.). <u>AVIATION SAFETY IS A TEAM EFFORT</u>			4. READY ALERT AIRCRAFT: IA: TBD 3JR - Short Haul Capable Staged at Sunriver, OR <i>Order through Communications/Dispatch</i> See Medical Plan in the IAP Life Flight @ 911			5. TFR: 0/2507 (A-43) Freq: 126.4500 Exp: 10/18/20 0400 UTC Polygon (20NM x 42NM) 8,000' MSL Daylight Hrs		
--	--	--	---	--	--	---	--	--

6. PERSONNEL	NAME	PHONE #	7. FREQUENCIES	Freq	Tone	8A. FIXED-WING Ordering
ASGS	Tim Lyda	541-761-2676	A/A Primary (A-9)	126.4500		AIRTANKERS/LEAD PLANES/SEATS: ATGS order through Dispatch
			A/A Secondary (A-10)	127.3500		8B. Aerial Supervision / Personnel / Location
HEBM	Kristina Sheppard	541-821-2023	A/G Primary (A-8)	172.6750		AIR ATTACK Platforms: Order through Dispatch, OR-RIC
			A/G Secondary (A-7)	172.4625		
USFS UAO	Jim Dotson	307-413-2024	ODF IA A/A(Primary)	134.7250		
DFPA UAO	Rory Collins	541-580-7158	ODF IA A/G (White Net Primary)	151.310	156.7	Air Guard: 168.6250 (110.9 Tx Tone)
DFPA Dispatch	541-672-6507	Ext 121 or 138	OR-RIC Dispatch	R170.025		S33 (Madras) Unicom: 122.8
OR-RIC		541-957-3253		T166.300	107.2	RDM (Redmond) Unicom: 122.95
			DFPA Dispatch	R151.1600	146.2	16S (Myrtle Creek): 122.7
				T159.4275	146.2	RBG (Roseburg) Unicom: 122.8
			Helibase and Deck	163.100		LMT (Klamath Falls) Unicom: 122.95
			ODF-IA A/G (Orange Net - Secondary)	151.4375	156.7	Myrtle Creek Helibase N42 59.84 W123 18.92 619' Elevation

9. HELICOPTERS

FAA N#	TY	MAKE/ MODEL	BASE	START	AVAIL	REMARKS	FAA N#	TY	MAKE/ MODEL	BASE	START	AVAIL	REMARKS
480	2	UH1B++(On loan if available)	16S	0930	0930	Call Air Support to Order	2WM	1	KMax	Strader	0800	0830	Jordan Olsen 704-418-6646
5MM	2	UH-1H++ (On loan if available)	16S	0930	0930	Call Air Support to Order							

AIR OPERATIONS SUMMARY

Prepared By: Tim Lyda

Prepared Date: 10/07/20

Prepared Time: 1600

INCIDENT NAME: Thielsen	OPS PERIOD DATE: 10/08/20	START TIME: 0800	END TIME: 2000	Sunrise Chemult: 0713	Sunset Chemult: 1833
3. REMARKS (Safety Notes, Hazards, and Air Operations Special Equipment, etc.): Call LIFC on Walker repeater when taking off and landing at Chemult. Transition to RICC as you enter the Umpqua.			MEDEVAC: Short Haul @ Sun River, OR. - Order thru Roseburg Aircraft Desk @ 541-957-3253		TFR #: 0/2378 Polygon to 10000 msl Freq-128.100
<i>Please Send all Aircraft costs to: Archiecreekhelibase@gmail.com</i>					

PERSONNEL	NAME	PHONE #	FREQUENCIES	AM	FM	FIXED-WING- Type/ Make-Model/ N#/ Base
ASGS	Tim Lyda	541-761-2676	A/G		171.1125	
			A/A	128.100		
						AERIAL SUPERVISION- Order through RICC Platforms in KLM and MFR.
HMGB – 0HX Line Medic Water tender	Tyler Davis Ryan Gregor Russ Belloir	360-220-5359 602-363-0770 541-430-0805	Cinnamon (Umpqua) - Rx: 171.425 tone 103.5 - Tx: 166.000 tone 192.8			
Roseburg Dispatch (RICC)		541-957-3325	Walker (Lakeview) - Rx: 170.525 tone: 103.5 - Tx: 162.750 tone: 141.3			
Lakeview Dispatch (LIFC)		541-947-6315				

HELICOPTERS

FAA N#	TY	MAKE/ MO DEL	BASE	START	AVAIL	REMARKS	FAA N#	TY	MAKE/ MO DEL	BASE	START	AVAIL	REMARKS
20HX	3	AS-350-B3	Beaver Marsh	0800	0900								

INCIDENT RADIO COMMUNICATIONS PLAN (ICS 205)

Controlled Unclassified Information//Basic

1. Incident Name:	2. Date/Time Prepared:	3. Operational Period: DAY	
ARCHIE CREEK	Date: 10/07/2020 Time: 1028	Date/Time From: 10/08/2020 0700 THU	Date/Time To: 10/08/2020 1900 THU

4. Basic Radio Channel Use:

Zone Group	Ch #	Function	Channel Name/Trunked Radio System Talkgroup	Assignment	RX Freq	RX Tone/NAC	TX Freq	TX Tone/NAC	Mode (A,D, or M)	Remarks
AC	1	TACTICAL	TAC 1	DIV A / R / S	168.0500N	123.0	168.0500N	123.0	A	TAC 1
AC	2	TACTICAL	TAC 2	DIV F / H / K	168.2000N	123.0	168.2000N	123.0	A	TAC 2
AC	3	TACTICAL	TAC 3	WRIGHT CREEK	168.6000N	123.0	168.6000N	123.0	A	TAC 3
AC	4	TACTICAL	TAC 4		166.7250N	123.0	166.7250N	123.0	A	RESERVED
AC	5	TACTICAL	TAC 5	DIV N/Q	166.7750N	123.0	166.7750N	123.0	A	TAC 5
AC	6	TACTICAL	RED NET	DFPA DIV W/T/D/E	151.3400N	156.7	151.3400N	156.7	A	DFPA RED NET
AC	7	COMMAND	CMD 7	DIV A, WRIGHT CRK	171.8250N	123.0	168.4250N	123.0	A	SCOTT MOUNTAIN
AC	8	COMMAND	CMD 8	DIV H/K, N/Q	173.5000N	123.0	168.5625N	123.0	A	TWIN LAKES
AC	9	COMMAND	CMD 9	DIV N/Q, R/S, W/T/D/E	170.4500N	123.0	168.1000N	123.0	A	RED BUTTE
AC	10	COMMAND	CMD 10	DIV F, H/K, WRIGHT CREEK	169.5375N	123.0	164.7125N	123.0	A	CHILCOOT MOUNTAIN
AC	11	COMMAND	DFPA RPT	DIV W/T/D/E	151.1600N	146.2	159.4725N	146.2	A	DFPA SIMULCAST REPEATER
AC	12	COMMAND	ROD LANE		170.0250N		166.3000N	107.2	A	BLM LANE MTN REPEATER
AC	13	COMMAND	CHILCOOT	DIV F, H/K	170.5500N	103.5	164.8000N	192.8	A	FS CHILCOOT REPEATER
AC	14	AIR TO GROUND	A/G PRI	ALL	172.6750N		172.6750N		A	AIR TO GROUND PRIMARY
AC	15	AIR TO GROUND	A/G SEC	ALL	172.4625N		172.4625N		A	AIR TO GROUND SECONDARY
AC	16	AIR GUARD	AIRGUARD	ALL	168.6250N		168.6250N	110.9	A	AIRGUARD

5. Special Instructions:

6. Prepared By (Communications Unit Leader)	Name: MISSY PARKER	Signature: <i>Missy Parker</i>
ICS 205	IAP Page	Date/Time: 10/07/2020 1028

INCIDENT RADIO COMMUNICATIONS PLAN (ICS 205)

Controlled Unclassified Information//Basic

1. Incident Name:	2. Date/Time Prepared:	3. Operational Period: DAY	
THIELSEN	Date: 10/07/2020 Time: 2000	Date/Time From: 10/08/2020 0700 THU	Date/Time To: 10/08/2020 1900 THU

4. Basic Radio Channel Use:										
Zone Group	Ch #	Function	Channel Name/Trunked Radio System Talkgroup	Assignment	RX Freq	RX Tone/NAC	TX Freq	TX Tone/NAC	Mode (A,D, or M)	Remarks
	1	COMMAND	CIMMAMON	UMPQUA NF CINNAMON BUTTE	171.4250N	103.5	166.0000N	192.8	A	DIV A/M, P/W, NORTH DIAMOND
	2	COMMAND	PIG IRON	UMPQUA NF PIG IRON RPTR	171.4250N	103.5	166.0000N	179.9	A	DIV P/W
	3	COMMAND	E DOEHD	UMPQUA NF DOE HEAD RPTR	171.4250N	103.5	166.0000N	186.2	A	
	4	TACTICAL	NURD PROJ	NURD/RRF PROJECT	169.1250N	103.5	169.1250N	103.5	A	NORTH DIAMOND
	5	TACTICAL	DLRD PROJ	DIAMOND LAKE RD PROJECT	168.2625N	103.5	168.2625N	103.5	A	DIV A/M/P/W
	6	TACTICAL	CG/T PRJ	COTTAGE GROVE/TILLER	167.3750N	103.5	167.3750N	103.5	A	
	7	COMMAND	WNF WALK	WINEMA NF WALKER RPTR	170.5250N	103.5	162.7500N	141.3	A	
	8	COMMAND	RRFHersh	ROUGE RIVER NF HERSHBERGER	169.5750N	67.0	164.8750N	67.0	A	
	9	COMMAND	CHILCOOT	FA CHILCOOT REPEATER	170.5500N	103.5	164.8000N	192.8	A	
	10	COMMAND	INTEROP	DOUGLAS CO. INTEROP	152.6600N	151.4	157.8600N	110.9	A	
	11	COMMAND	CMD 11	THIELSEN BASE CAMP	169.7500N	123.0	167.1000N	123.0	A	**NOT IN SERVICE **
	12	COMMAND	CRATR LK	CRATER LAKE NP WATCHMEN	170.1000N	110.9	166.2375N	110.9	A	
	13	AIR TO GROUND	A/G-PRI	NIFC AIR TO GROUND	171.1125N		171.1125N		A	A/G PRIMARY- ALL DIVISIONS
	14	AIR TO GROUND	A/G-SEC	NIFC AIR TO GROUND	173.8625N		173.8625N		A	A/G SECONARY-ALL DIVISIONS
	15	TACTICAL	VMED 28	INCIDENT MEDVAC	153.3400N		153.3400N		A	** MEDIVAC **
	16	AIR GUARD	AIR GUARD	AIR GUARD	168.6250N		168.6250N	110.9	A	ALL DIVISIONS

5. Special Instructions:		

6. Prepared By (Communications Unit Leader)	Name: MISSY PARKER	Signature: <i>Missy Parker</i>
ICS 205	IAP Page	Date/Time: 10/07/2020 2000

Thank You

On behalf of Roseburg District Bureau of Land Management, Umpqua National Forest, and all cooperators on this incident, we'd just like to thank you for your efforts to clean up trash and other debris around and within the fire area. Several of us who have worked on incidents around the West and the nation have noticed how 'clean' our work areas / Divisions have been. Thanks again for your diligence and keep up the great work!



Cheers!

Resource Advisors and Agency personnel

Weed Wash!!



Good news....the weed wash is still up and running! Our objective, at this point in the game, is to complete suppression repair while minimizing damage to natural resources. Thank you for your continued vigilance in helping us achieve that goal!

There is one weed wash location on the Archie Creek Fire;

- Currently it is at **Glide ICP** (for all heavy equipment, and all vehicles).
- Stay tuned for an update on location – we are trying to get the weed wash moved before the weekend (10/10 and 10/11) is over.

We ask that you **wash your vehicles** during the following situations;

- Prior to demob....**DO NOT** take our weeds home with you!
- Whenever logistically possible, wash equipment/vehicles prior to moving from the BLM/Private checkerboard to Forest Service-administered lands.

****If you are just arriving to the Archie Creek Fire, take all vehicles through the weed wash before entering the Archie Creek Fire.****

To review, please wash your vehicle / equipment upon:

1. Initial mobilization into camp;
2. Final demobilization;
3. Moving from BLM to FS;
4. As often as possible!

*Reminder: all heavy equipment at Archie Creek must go to **Glide** for weed washing.*

*Federal agencies and private industry spend thousands of dollars a year in the fight against noxious weeds as they spread from the valleys (or other infested areas) into un-infested Public Lands and plantations. Prevention is by far the most effective proactive weapon we have; it saves taxpayer dollars, and all it takes is a little extra time.

DEMOB INSTRUCTIONS

In the COVID-19 environment we are limiting direct contact where possible including within the demob process.

As such, much of the process will be completed via cellphone. Please wear a face covering during any in person interaction.

Demob steps for all resources (must be done in order):

1. Any resources that were off pavement must go through **weed wash**. Location @ Thielsen Fire = Diamond Lake Camp. Location @ Archie Creek Fire = ICP.
2. Check out with **Ground Support** at either camp.
3. Turn in any radios to the **Communications Unit** and checked out supplies to the **Supply Unit** at either camp.
4. Call **Demob Unit** @ 541-887-0815
5. Call **Finance** @ 509-949-3210 or 360-601-8820
6. Scan this QR code and review the information on COVID.



If you follow this process you will be made available in the ordering system faster for your next assignment.

Any questions about the process please contact the Demob Unit at 541-887-0815.

Thank you and safe travels!

**Tentative Demob List
Archie Creek Fire - October 8, 2020**

EQUIPMENT

E-2	0900	(WTS2)	WILLIAM NASH 44
E-39	1145	(PU)	C&K WILDLAND FIRE
E-105	1200	(WTS2)	IRELAND INC 46
E-113	1215	(WTS2)	PARTRIDGE
E-342	1230	(DOZ2)	J B LOGGING
E-118	1245	(SKD2)	PACIFIC RIDGELINE FORESTRY
E-345	1300	(SKD2)	MARK JONES TRUCKING

OVERHEAD

O-604	0700	(TFLD)	JOHANSEN, JUSTEN WILLIAM
O-409	0715	(HEQB)	FRANKLIN, THOMAS
O-615	0745	(ITSS)	MALLERY, TODD GLENN
O-399	0815	(EMPF)	FIRELINE MEDICS ANDREW
O-261	0845	(TFLD)	RYAN, JOHN S
O-314	0930	(FMOD)	C & K WILDLAND FIRE, LLC -
O-313	0945	(FMOD)	C & K WILDLAND FIRE, LLC
O-515	1045	(TFLD)	NIEBEL, THADDEUS
O-10003	1100	(READ)	MCENROE, JEFFREY
O-10005	1115	(READ)	KEHOE, MARK
O-380	1600	(EMPF)	ABEL, FRANK HOYLE
O-454	1830	(HEQB)	HADWEN, JUSTIN
O-443	1845	(BCMG)	MCCORKLE, CHRISTOPHER M
O-304	1900	(SECM)	BRADFORD, KAREN L
O-453	2000	(HEQB)	FAULK, ZACHARY THOMAS

Friday, October 9, 2020

CREWS

C-61	(HC2I)	PACIFIC OASIS WILDFIRE
C-62	(HC2I)	SES AHTANUM, WA-STATE

EQUIPMENT

E-142	(ENG4)	J3 CONTRACTING, LLC
E-151	(SKG2)	WYEAST FORESTRY
E-247	(ENG6)	JR WILDFIRE 07
E-291	(AMBU)	AMERICAN MEDICAL RESPONSE,

OVERHEAD

O-216	(DRIV)	ADAMSKI, KEVIN J
O-452	(SEC1)	BOSCH, BRANDON J
O-221.38	(TNSP)	DAVIS, ERIKA L
O-485	(FFT1)	MCGRATH, CHRISTOPHER J
O-387	(PIOF)	ENGLE, JASON

Human Resource Message – Archie Creek/Thielson Fires October 8, 2020



Helpful Information

We find there are many times when fire personnel need to have things/items/stuff mailed to them while they are on fire assignments. Therefore, we contacted the local post office to find the best mailing address, as there is no physical mailing address for the Archie Creek ICP or the Thielson Spike Camp.

To receive mail, please follow this process:

1. Have the sender address to: Your Name, General Delivery, Glide, Oregon 97443
2. To pick up your mail at the Glide Post Office, you will need to provide your identification to the Post Office. Per the Postmaster, we cannot pick up anyone's mail.
3. Glide Post Office Hours: M-F 0800-12:00 and 12:30-4:30. You may also pick up your mail on Saturday morning from 08:30-10:00 A.M. at the Glide Post Office caller window.

To send mail, please follow this process:

4. If you need to mail a letter, etc. and you are not able to drop it off at the post office, you may drop off your stamped letter at the Information yurt at the Archie Creek ICP and we will take it to the post office for you. For folks at the Thielson Spike Camp, if you need to send mail or receive mail, please contact the Public Information folks at the Archie ICP.

Lost and Found

If you lost something, we may have found it. Please contact the Public Information folks at the Archie Creek ICP. They have a few items and one of them may be yours. 2020.archiecreek@firenet.gov, or call the Archie Creek Information phone number at 941-334-7674.

Please have a safe and successful day!

Quote for the Day

When things do not go your way, remember that every challenge – every adversity – contains within it the seeds of opportunity and growth.

Roy T. Bennett

Susie Manezes, Human Resource Specialist PNW Team 12 – Contact: 602-571-9327
Located at the Incident Command Post (ICP) Glide, OR. smanezes@blm.gov

Diversity, Teamwork, Appropriate Behavior...Mutual Respect...You Make the Difference!



ARCHIE CREEK / THIELSEN CONTACT LIST

FINANCE

2020.archiecreek.finance@firenet.gov

DMOB

2020.archiecreek.DMOB@firenet.gov

SITUATION UNIT

2020.archiecreek.situation@firenet.gov

PLANS

2020.archiecreek.plans@firenet.gov

LOGISTICS

All orders (ICS-213) need to be submitted electronically to:

2020.archiecreek.ordering@firenet.gov

INFORMATION

2020.archiecreek@firenet.gov

NOTE: These email addresses are used for both Thielsen and Archie Creek Fires.

Archie Creek Fire & Thielsen Fire Training Message

**LAST DAY TO START NEW TRAINING ASSIGNMENTS
SUNDAY 10/11/2020!!!**



TNSP will be on R&R Oct. 8 & 9

Starting Oct. 10th, TNSP will be available 6-9am by appointment only and 3-8pm daily

Erika L. Davis ~ (850) 841-0038 ~ Erika.Davis@USDA.GOV

TRAINING REGISTRATION



<https://tinyurl.com/yxs7x4bm>

- Initiate registration via QR code
- Send Red Card and PTB cover
- Receive confirmation email w/forms

TRAINING CLOSE-OUT



<https://tinyurl.com/y54ufg3v>

- Initiate Close-out via QR code
- Send completed Performance Evaluation(s), Evaluation Record(s), Final Evaluators Verification (if necessary)

LOGISTICS INFORMATION

Archie Creek Kitchen
Breakfast: 0600-0830
Dinner: 1830-2130

Archie Creek Showers
Opens: 0500
Closed: 1200-1400
Closed: 2200

Thielsen Spike
Breakfast: 0600-0900
Dinner: 1600-2200



For COVID mitigation, please reduce the numbers of individuals coming to the kitchen window. Send representatives to collect meals for groups.

FINANCE

Communications for Finance should be sent to
2020.Archiecreek.finance@firenet.gov

Send CTRs and Shift Tickets to the above email.

Please keep your CTRs and Shift Tickets up-to-date –**DON'T WAIT!**

Resource Order Numbers in 8000's
Beginning 10/05/2020 will demob from the
DFPA OFFICE
1758 NE Airport Road
Roseburg, OR 97470

Contact Information:

Equipment Time: Christina Goebel – 509-670-5889

Personnel Time: Carol Long – 509-433-1115

Procurement: Mark Bohnet – 509-531-7418

Compensation & Claims: Barb Haxby – 360-601-8820

Finance Section Chief: Cheri Fuller – 509-949-3210

Deputy Finance Section Chief: Barb Haxby – 360-601-8820

ICPI: Rob Hechinger – 509-675-5821



Finance Archie Creek

FINANCE

Communications for Finance should be sent to
2020.Thielsen.finance@firenet.gov

Submit all Personnel Time & Equipment Time to the email above!

All CTRs and Shift tickets must be signed by your incident supervisor.

Shift tickets shall also be signed by the contractor or their representative. Please write the fire name and your **Resource Order Number** on the CTR or shift tickets.

Only one person (single resource) on a Crew Time Report (CTR)

You should project time through you travel day if you are demobing. Follow the demobbing instructions during COVID previously listed in the IAP.

If you are scheduled to demob in the next day or so, please contact Finance **today to ensure that you time is complete and up to date.**

Finance is located at: 2300 NE Aviation Drive, Roseburg OR, 97470




Finance Thielsen

Note

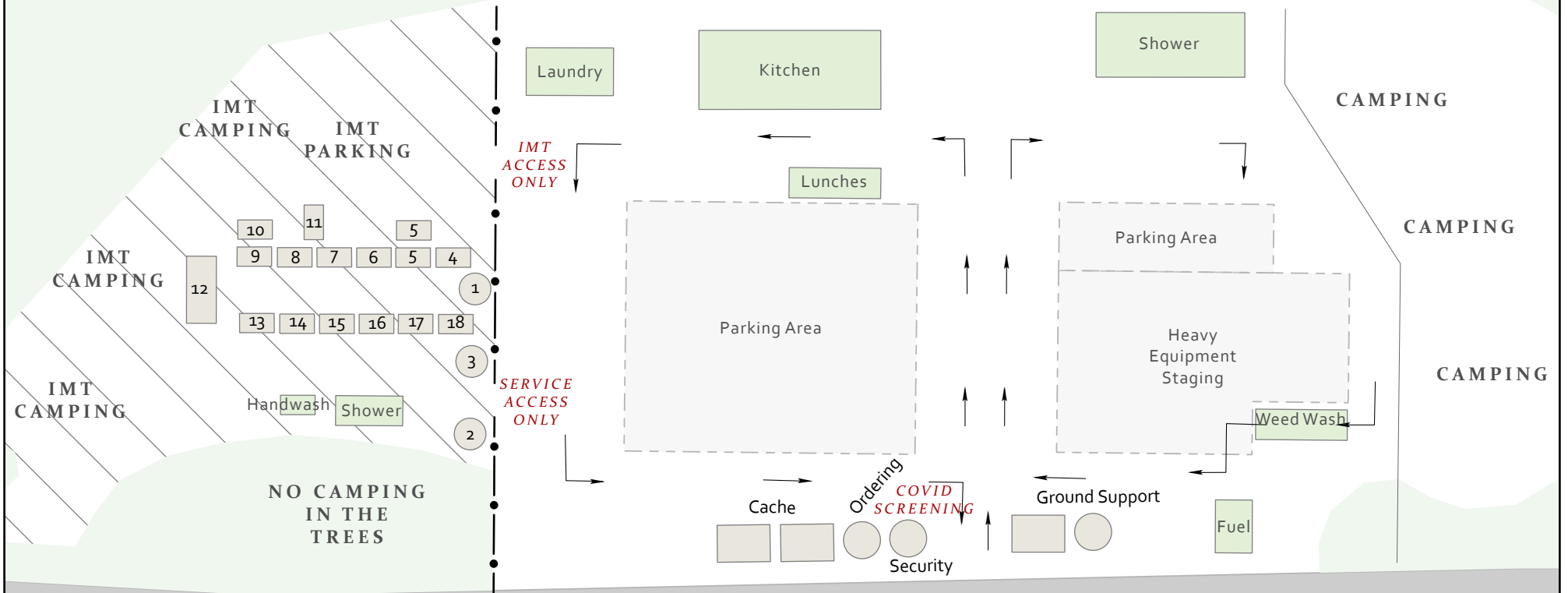
To comply with COVID-19 mitigations, only personnel assigned and working within the ICP are allowed within the IMT Area.

Access to Check-in / Demob and the Medical Unit are in place.

IMT Personnel should keep contact with the Base Camp Area to a minimum.

- | | | |
|-----------------------|-------------------|--|
| 1 - Check-in / Demob | 8- Plans | 15- Documentation |
| 2- Cooperator Meeting | 9- Situation | 16- LOGS |
| 3- READ | 10- GS | 17- Finance |
| 4- Medical Unit | 11- Copy Service | 18- Public Information |
| 5- Communications | 12- Large Meeting |  IMT Area |
| 6- Small Mtg | 13- IC | |
| 7- Safety / OPS | 14- HR | |

**Archie Creek
OR-UPF-000436
Strader Ranch ICP
10/08/2020**










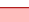



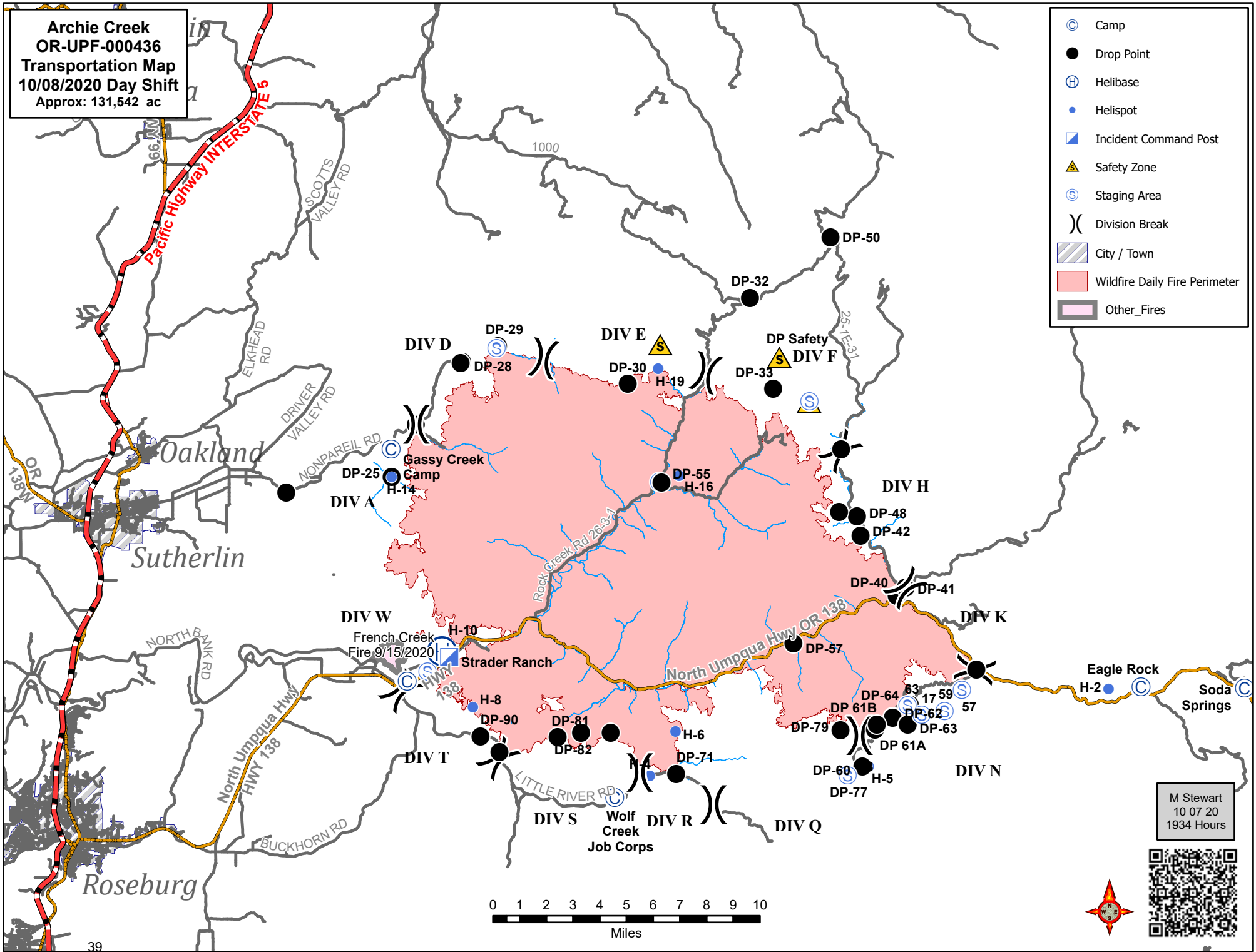
S. Bushnell
10 07 20
2150 Hours

North Umpqua River

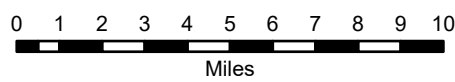


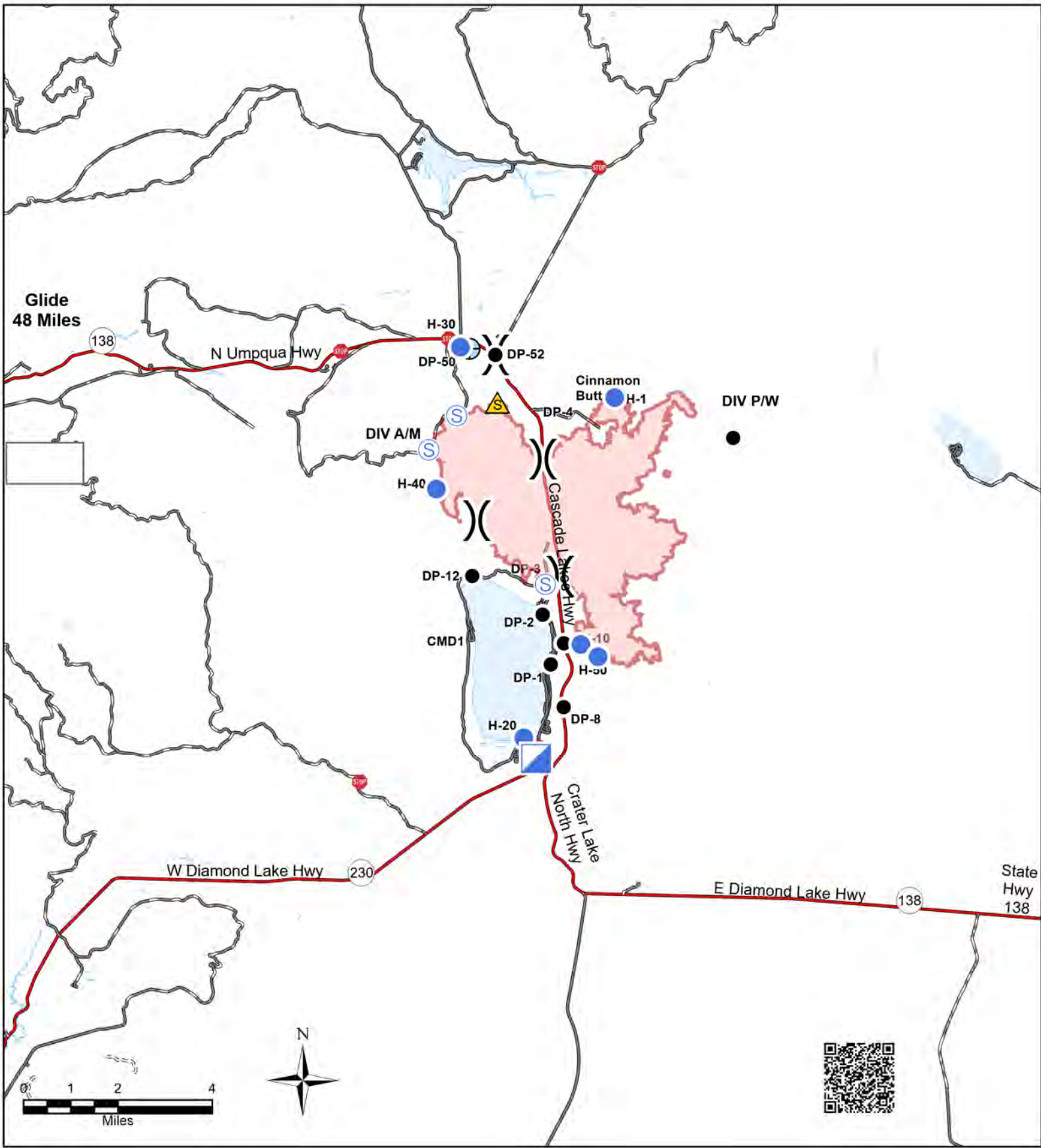
**Archie Creek
OR-UPF-000436
Transportation Map
10/08/2020 Day Shift
Approx: 131,542 ac**

-  Camp
-  Drop Point
-  Helibase
-  Helispot
-  Incident Command Post
-  Safety Zone
-  Staging Area
-  Division Break
-  City / Town
-  Wildfire Daily Fire Perimeter
-  Other_Fires



M Stewart
10 07 20
1934 Hours





Thielsen
OR-UPF-000441
IAP Transportation Map
10/08/2020 Day Shift

- | | | |
|------------|-----------------------|---------------------------------|
| | | |
| Checkpoint | Incident Command Post | Water Development or Draft Site |
| | | |
| Drop Point | Safety Zone | Division Break |
| | | |
| Hellspot | Staging Area | Wildfire Daily Fire Perimeter |

Incident Maps

Maps are not included in the IAP document due to size and page count. For detailed Operations, Transportation and other maps, scan the QR code (or click the link below it) for your fire:



[Archie Creek](#) (click to open)



[Thielsen](#) (click to open)

Send Map Updates

Send map updates by email to the Situation Unit email address for your fire:

Archie Creek: 2020.archiecreek.situation@firenet.gov

Thielsen: 2020.thielsen.situation@firenet.gov

Alternately, text/call the Situation Unit at 360-584-3373. Make sure to include your name, position and explanation of the update you send.

How to correctly send data from Avenza:

1. Open the map in Avenza.
2. Click the pin with three lines near the lower-right corner.
3. *iPhone*: In the lower right, click the square with up arrow. From the pop-up menu, choose Export to Others.
Android: In the lower right, click the circle with three lines. Click the pop-up circle with up arrow.
4. Set these options:
 - a. Filename – leave alone
 - b. Export Format – choose SHP, GPX or KML
 - c. Data – all features
 - d. Image size – no image
5. Click the Export button in the upper-right corner.
6. When the export is ready, choose your Mail application.
7. Send the email to the address for your fire.
8. Your email needs to include your name and position
9. Your email needs to include an explanation of the data you are sending.

REQUIRED BY ALL PERSONNEL: COVID-19 DAILY CHECKLIST

Supervisors are required to go over this list each morning with assigned resources. Please make a notation in the remarks section on your daily Crew Time Report documenting your daily health assessment check.

Self-Awareness / Screening

- Notify supervisor if you or others experience:
 - Fever or chills
 - Cough
 - Shortness of breath or difficulty breathing
 - Fatigue
 - Muscle or body aches
 - Have you had close contact within the last 14-days with someone who is currently sick with confirmed COVID-19? (Note: Close contact is defined as within 6 feet for more than 15 minutes per CDC Guidelines)
 - Headache
 - New loss of taste or smell
 - Sore throat
 - Congestion or runny nose
 - Nausea or vomiting
 - Diarrhea
- Review and follow crew and division plans to isolate, triage, and transport symptomatic personnel: Contact line EMT or COVID Module personnel for next steps.
 - Masks must be worn at all times in base camp, spike camp and ICP.
 - Modules (e.g. crews, engines) should send representatives to pick up meals for the entire group: 1 person for engine crews, 3-4 people for 20 person crews.
 - Join morning briefing via phone (number provided in IAP)
 - Observe 6-foot social distancing during briefings and while standing in line for meals, and any other time you are near people outside of your module.
 - Limit contact between firefighters and the public as much as possible, use crew representatives to pick up supplies, fuel, etc.

**WEAR YOUR MASK
WASH YOUR HANDS
WATCH YOUR DISTANCE**

Archie Creek Fire

ICP/Base Camp

MEDICAL EMERGENCY PROCEDURE

**YELL for HELP
STAY WITH PATIENT**

**SEND SOMEONE TO COMMUNICATIONS/OR
CALL:**

COMMUNICATIONS TRAILER IS AT THE BASE CAMP,
LOCATED IN GLIDE OREGON (BEHIND THE ROWS
OF YURTS). THE INCIDENT MEDICAL TENT IS
LOCATED IN THE EAST END OF THE YURT ROWS.

**COMMUNICATIONS WILL START
APPROPRIATE MEDICAL RESPONSE**

DAY AND NIGHT 24 HR

Communications:
Command or Cell: 206-450-6582

Thielsen Fire
Spike Camp
In Camp Safety

MEDICAL EMERGENCY PROCEDURE

YELL for HELP
STAY WITH PATIENT

CALL CELL NUMBER LISTED BELOW

**LEE ZANNING WILL START APPROPRIATE
MEDICAL RESPONSE**

DAY AND NIGHT 24 HR

Communications: Lee
Venning Cell: 417-459-5759

EMERGENCY PLAN

INCIDENT WITHIN AN INCIDENT

ON SCENE SUPERVISOR

In the event of an accident or medical incident of any size, your primary responsibility is to ENSURE that the victim(s) receive prompt and effective Triage, Treatment and Transportation.

- Conduct size-up of the incident (nature of accident, number type of resources involved, latitude and longitude location); notify incident communications center and supervisor, request assistance as needed.
- Order and coordinate medical and support response to the accident.
- Evaluate special needs (law enforcement, haz mat, etc.).
- Clear the command frequency if medical emergency; coordinate with incident communications and air attack for air medical transportation needs
- Preserve and photograph the scene for accident investigation.
- Remain aware of surroundings and the status of the main incident (delegate personnel to monitor the main fire) to ensure safety of medical treatment personnel.
- Until relieved, supervise and manage all personnel involved at the incident scene.
- **ENSURE THE MEDICAL INCIDENT REPORT IN THE INCIDENT ACTION PLAN IS BEING USED AND FOLLOWED.**

MEDICAL PLAN (ICS 206 WF)

1. Incident/Project Name		2. Operational Period				
Archie Creek		Date/Time 10/08/2020 0600-1900				
3. Ambulance Services						
Name	Complete Address	Phone		Advanced Life Support (ALS) Yes No		
Douglas County Fire District #2	4200 Carnes Rd Roseburg, OR 97471	Dispatch 541-440-4471 or 911		x		
Glide Rural Fire Protection	18910 N. Umpqua Hwy Glide, OR 97443	Dispatch 541-440-4471 or 911			x	
4. Air Ambulance Services						
Name	Phone	Type of Aircraft & Capability				
Reach Helicopter Service	800-338-4045	EC-135 Night Capability (Roseburg)				
Life Flight / Airlink	800-232-0911	EC-135 Night Capability				
Forest Service Short Haul	Air Ops	Located in Sunriver, OR				
5. Hospitals						
Name Complete Address	GPS Datum – WGS 84 Coordinate Standard Degrees Decimal Minutes DD° MM.MMM' N - Lat DD° MM.MMM' W - Long	Travel Time From ICP Air Gnd		Phone	Helipad Yes No	Level of Care Facility
Legacy Emmanuel Medical 3001 N Gantenbein Ave. Portland, OR 97202	Lat: 45° 32.688 N	1 Hr 30 Min	3 Hr 10 Min	(888) 598-4232	X	Level 1 Trauma & Burn Center
	Long: 122° 40.293 W					
	VHF: 155.340					
Mercy Medical 2700 NW Stewart Pkwy. Roseburg, OR 97471	Lat: 43° 14.57 N	20 Min	40 Min	541-677-4333	X	Level 3 Trauma
	Long: 123° 21.99 W					
	VHF: 155.340					
Sacred Heart Medical Center 3333 Riverbend Dr. Springfield, OR 97477	Lat: 44° 04.87 N	35 Min	1 Hr 10 Min	541-222-6929	X	Level 2 Trauma
	Long: 123° 01.58 W					
	VHF: 155.340					
6. Division Branch Group						
	Capability	Personnel				
A/R/S	Medic 3 (E-175), BTE REMS (0-430), EMTF Eblin (0-331)					
F/H/K	Medic 4, (E-286), Albuquerque REMS (0-479)					
N/Q	Medic 1 (E-29), Medic 5 (E-291), Douglas County REMS (0-382)					
Wright Group	EMPF Bennet (0-496)					
7. Prepared By (Medical Unit Leader)						
8. Date/Time		9. Reviewed By (Safety Officer)		10. Date/Time		
Eamonn Ryan, Bonnie Gibbons <i>Eamonn Ryan</i>		Troy Corn <i>Troy Corn</i>				

MEDICAL PLAN (ICS 206 WF)

1. Incident/Project Name		2. Operational Period				
Thielsen		Date/Time 10/08/2020 0600-1900				
3. Ambulance Services						
Name	Complete Address	Phone		Advanced Life Support (ALS) Yes No		
Chemult Fire Protection	109800 US 97 Chemult, OR 97731	Dispatch 541-290-2172 or 911		x		
Crescent Fire and Ambulance	136727 Main Street Crescent, OR 97733	Dispatch 541-433-2466 or 911		x		
4. Air Ambulance Services						
Name	Phone	Type of Aircraft & Capability				
Mercy Flight	800-903-9000	Bell 407, Night Capability				
Life Flight / Airlink	800-232-0911	EC-135 Night Capability				
Forest Service Short Haul	Air Ops	Located in Sunriver, OR				
5. Hospitals						
Name Complete Address	GPS Datum – WGS 84 Coordinate Standard Degrees Decimal Minutes DD° MM.MMM' N - Lat DD° MM.MMM' W - Long	Travel Time From ICP Air Gnd		Phone	Helipad Yes No	Level of Care Facility
Legacy Emmanuel Medical 3001 N Gantenbein Ave. Portland, OR 97202	Lat: 45° 32.688 N	1 Hr 30 Min	3 Hr 10 Min	(888) 598-4232	X	Level 1 Trauma Burn Center
	Long: 122° 40.293 W					
	VHF: 155.340					
St. Charles 2500 Neff Road Bend, OR 97701	Lat: 44° 3.4904 N	40 Min	1 Hr 10 Min	541-706-4550 (ER)	X	Level 2 Trauma
	Long: 121° 18.9185 W					
	VHF: 155.340					
Sacred Heart Medical Center 3333 Riverbend Dr. Springfield, OR 97477	Lat: 44° 04.87 N	35 Min	1 Hr 10 Min	541-222-6929	X	Level 2 Trauma
	Long: 123° 01.58 W					
	VHF: 155.340					
6. Division Branch Group		Capability		Personnel		
N. Diamond		TBA				
A/M/P/W		Chemult Ambulance (E-71), Med Transport Ambulance (E-72), EMP Stivers (O-59), EMT Hoover (O-157), EMT Forsythe (O-175), EMP Gregor (O-328)				
7. Prepared By (Medical Unit Leader)		8. Date/Time	9. Reviewed By (Safety Officer)		10. Date/Time	
Eamonn Ryan, Bonnie Gibbons <i>Eamonn Ryan</i>		10/7/2020 1900	Troy Corn <i>Troy Corn</i>			

MEDICAL PLAN (ICS 206 WF)

Controlled Unclassified Information//Basic

Medical Incident Report

FOR A NON-EMERGENCY INCIDENT, WORK THROUGH CHAIN OF COMMAND TO REPORT AND TRANSPORT INJURED PERSONNEL AS NECESSARY.

FOR A MEDICAL EMERGENCY: IDENTIFY ON SCENE INCIDENT COMMANDER BY NAME AND POSITION AND ANNOUNCE "MEDICAL EMERGENCY" TO INITIATE RESPONSE FROM IMT COMMUNICATIONS/DISPATCH.

Use the following items to communicate situation to communications/dispatch.

1. CONTACT COMMUNICATIONS / DISPATCH (**Verify correct frequency prior to starting report**)

Ex: "Communications, Div. Alpha. Stand-by for Emergency Traffic."

2. INCIDENT STATUS: *Provide incident summary (including number of patients) and command structure.*

Ex: "Communications, I have a Red priority patient, unconscious, struck by a falling tree. Requesting air ambulance to Forest Road 1 at (Lat./Long.) This will be the Trout Meadow Medical, IC is TFLD Jones. EMT Smith is providing medical care."

Severity of Emergency / Transport Priority	<input type="checkbox"/> RED / PRIORITY 1 Life or limb threatening injury or illness. Evacuation need is IMMEDIATE <i>Ex: Unconscious, difficulty breathing, bleeding severely, 2° – 3° burns more than 4 palm sizes, heat stroke, disoriented.</i> <input type="checkbox"/> YELLOW / PRIORITY 2 Serious Injury or illness. Evacuation may be DELAYED if necessary. <i>Ex: Significant trauma, unable to walk, 2° – 3° burns not more than 1-3 palm sizes.</i> <input type="checkbox"/> GREEN / PRIORITY 3 Minor Injury or illness. Non-Emergency transport <i>Ex: Sprains, strains, minor heat-related illness.</i>	
Nature of Injury or Illness & Mechanism of Injury		<i>Brief Summary of Injury or Illness (Ex: Unconscious, Struck by Falling Tree)</i>
Transport Request		<i>Air Ambulance / Short Haul/Hoist Ground Ambulance / Other</i>
Patient Location		<i>Descriptive Location & Lat. / Long. (WGS84)</i>
Incident Name		<i>Geographic Name + "Medical" (Ex: Trout Meadow Medical)</i>
On-Scene Incident Commander		<i>Name of on-scene IC of Incident within an Incident (Ex: TFLD Jones)</i>
Patient Care		<i>Name of Care Provider (Ex: EMT Smith)</i>

3. INITIAL PATIENT ASSESSMENT: *Complete this section for each patient as applicable (start with the most severe patient)*

Patient Assessment: See IRPG page 106

Treatment:

4. TRANSPORT PLAN:

Evacuation Location (if different): *(Descriptive Location (drop point, intersection, etc.) or Lat. / Long.)* Patient's ETA to Evacuation Location:

Helispot / Extraction Site Size and Hazards:

5. ADDITIONAL RESOURCES / EQUIPMENT NEEDS:

Example: Paramedic/EMT, Crews, Immobilization Devices, AED, Oxygen, Trauma Bag, IV/Fluid(s), Splints, Rope rescue, Wheeled litter, HAZMAT, Extrication

6. COMMUNICATIONS: Identify State Air/Ground EMS Frequencies and Hospital Contacts as applicable

Function	Channel Name/Number	Receive (RX)	Tone/NAC *	Transmit (TX)	Tone/NAC *
COMMAND					
AIR-TO-GRND					
TACTICAL					

7. CONTINGENCY: **Considerations:** *If primary options fail, what actions can be implemented in conjunction with primary evacuation method? Be thinking ahead.*

8. ADDITIONAL INFORMATION: *Updates/Changes, etc.*

REMEMBER: Confirm ETA's of resources ordered. Act according to your level of training. Be Alert. Keep Calm. Think Clearly. Act Decisively.

Controlled Unclassified Information//Basic