



INCIDENT ACTION PLAN

Archie Creek Thielsen

October 10, 2020

Operational Period 0700-1900



IAP



CHECK IN



Archie Creek
OR-UPF-000436
P6NKL8 (0615)
221 IWO



Archie Creek Maps



Thielsen Maps

Thielsen
OR-UPF-000441
P6NKN621 (0615)

**ALL FS Employees refer
to FINANCE MESSAGE for
INFO**



MORNING BRIEFING @ 0700 Morning briefing will be a conference call, use the information below to connect:

Phone: 1-888-609-7602

Participant Number: 7544830#

-ALL PERSONNEL-

MUTE your phone when you call in to Briefing




This page intentionally left blank.



INCIDENT OBJECTIVES (ICS 202)

1. Incident Name:	2. Operational Period: DAY	
ARCHIE CREEK / THIELSEN	Date/Time From: 10/10/2020 0700 SAT	Date/Time To: 10/10/2020 1900 SAT
3. Objective(s):		
Provide for the safety of all responders and public at all times.		
Protect communities, critical infrastructure, timber values, recreation sites and natural resource values.		
Implement Covid-19 prevention and mitigation procedures as outlined by the CDC and the Geographic Wildfire Response Plan.		
Implement strategies and tactics that commit responders only to operations and tasks that will have a high probability of success with the least exposure necessary.		
Coordinate suppression repair tasks with Resource Advisors and implement in a manner that will minimize impacts to protected cultural and aquatic resources.		
4. Operational Period Command Emphasis:		
Continue to implement the suppression repair plan and coordinate work assignments with assigned Resource Advisors.		
General Situational Awareness:		
Be prepared for the changing weather conditions, including rain and cooler temperatures.		
5. Site Safety Plan Required? Yes <input type="checkbox"/> No <input checked="" type="checkbox"/>		
Approved Site Safety Plan(s) Located at:		
6. Incident Action Plan (the items checked below are included in this Incident Action Plan):		
<input checked="" type="checkbox"/> ICS 202	<input type="checkbox"/> ICS 207	Other Attachments:
<input checked="" type="checkbox"/> ICS 203	<input type="checkbox"/> ICS 208	<input checked="" type="checkbox"/> SAFETY MESSAGE
<input checked="" type="checkbox"/> ICS 204	<input checked="" type="checkbox"/> ICS 220	<input checked="" type="checkbox"/> HUMAN RESOURCE MSG
<input checked="" type="checkbox"/> ICS 205	<input type="checkbox"/> Map/Chart	<input checked="" type="checkbox"/> COVID PRECAUTIONS & SCREENING TOOL
<input type="checkbox"/> ICS 205A	<input checked="" type="checkbox"/> Weather Forecast/Tides/Currents	<input checked="" type="checkbox"/> UNIT LOG
<input checked="" type="checkbox"/> ICS 206		
7. Prepared by: MARGE HUTCHINSON Position/Title: PSC2	Signature: <i>Marge Hutchinson</i>	
8. Approved by Incident Commander:	Name: BOBBY SHINDELAR	Signature: <i>Bobby Schindelar</i>
ICS 202	IAP Page	Date/Time: 10/09/2020 2000

ORGANIZATION ASSIGNMENT LIST (ICS 203)

1. Incident Name:		2. Operational Period: DAY	
ARCHIE CREEK / THIELSEN		Date/Time From: 10/10/2020 0700 SAT	Date/Time To: 10/10/2020 1900 SAT
3. Incident Commander(s) and Command Staff:		GROUND SUPPORT UNIT	MARK ANDERSON
INCIDENT COMMANDER	BOBBY SHINDELAR	COMMUNICATIONS UNIT	MISSY PARKER
DEPUTY		SUPPLY UNIT	JOHN KAUPA
SAFETY OFFICER	TROY CORN JACK CATES	MEDICAL UNIT	EAMONN RYAN BONNIE GIBBONS;LEE VENNING(T)
INFORMATION OFFICER	MARY BEAN ROLAND EMETAZ	SECURITY UNIT	KEVIN REISH
LIAISON OFFICER	SCOTT CRAWFORD	FOOD UNIT	JOHN SHACKELFORD
HUMAN RESOURCE SPECIALIST	SUSIE MANEZES		
COVID COORDINATOR	LIV STECKER	7. Operations Section:	
		OPERATION SECTION CHIEF	JEFF BOUSCHOR TONY ENGEL
4. Agency/Organization Representative(s):		PLANNING OPS	MATT CASTLE
Agency/Organization	Name		
UMPQUA NF - AA	ALICE CARLTON		
UMPQUA NF - AREP	K.C. BRIGGS SHERRI CHAMBERS	DIVISION/GROUP	ARCHIE CK - A/R/S LARRY LEACH
BLM - AA	HEATHER WHITMAN	DIVISION/GROUP	ARCHIE CK - F/H/K MATT KENNEDY
BLM - AREP	CHRIS FOSTER	DIVISION/GROUP	ARCHIE CK - N/Q MICHAEL JACKSON
BLM - RESOURCE ADVISOR	JEFF MCENROE	DIVISION/GROUP	ARCHIE CK - WRIGHT CREEK BOB HINDS JAMES DICKINSON (T)
USFS - RESOURCE ADVISOR	JOSH CHAPMAN JED HANCOCK	BRANCH DIRECTOR	AARON ROWE
5. Planning Section:		DIVISION/GROUP	THIELSEN - NORTH DIAMOND RICHARD TINGLE JEFF PRICHER
CHIEF	MARGE HUTCHINSON HOWARD JOHNSON (VIRTUAL)	DIVISION/GROUP	THIELSEN - A/M/P/W CODY ACORD CHRIS WHITE (T)
DEPUTY	ERIC BLACK		
RESOURCES UNIT	JILL JOHNSON		
SITUATION UNIT	DAVE WISCHER	7b. Air Operations Branch:	
DOCUMENTATION UNIT	JEFF DEARDORFF	AIR OPS BRANCH DIRECTOR	TIM LYDA
DEMOBILIZATION UNIT	NATHAN JEFFRIES (VIRTUAL)	AIR ATTACK SUPERVISOR	
FIRE BEHAVIOR ANALYST	DON STRAND	AIR SUPPORT SUPERVISOR	
TRAINING SPECIALIST	ERIKA DAVIS		
GIS SPECIALIST	SHAWN BUSHNELL; BOB KIRK MATT STEWART (T)	8. Finance/Administration Section:	
TECHNOLOGY SUPPORT SPECIALIST	GEORGE JENKINS DAVID JOHNSON	CHIEF	CHERI FULLER
INCIDENT METEOROLOGIST	BOB TOBIN (VIRTUAL)	DEPUTY	BARB HAXBY
		TIME UNIT	CAROL LONG
		PROCUREMENT UNIT	MARK BOHNET
		COST UNIT	STEVE CROW
		ICPI	ROB HECHINGER
6. Logistics Section:			
CHIEF	PETER FITZMAURICE		
DEPUTY			
FACILITIES UNIT	KEVIN HAUGHTON		
9. Prepared By:	Name: JILL JOHNSON	Position/Title: RESL	Signature:
ICS 203	IAP Page	Date/Time: 10/09/2020 2000	



FIRE WEATHER FORECAST



FORECAST NO: 31
SHIFT DATE: Saturday, Oct 10th, 2020
PREDICTION FOR: 0600-2000
UNIT: OR- Umpqua NF

INCIDENT NAME: Archie Creek/Thielsen
Incident Meteorologist – Dan Byrd
SIGNED: *Dan Byrd*

TIME AND DATE
FORECAST ISSUED: 2000 hrs. 10/9/20

WEATHER DISCUSSION: Rain will move into the area early this morning and this will continue into tonight. The rain will begin to diminish this evening, but occasional light rain will be possible through the night. Light snow may mix with the rain tonight at higher elevations, with snow levels falling to around 5800 feet. Showers will continue to be possible on Sunday, but snow levels will rise to around 7000 feet Sunday afternoon. Rain accumulations will range from 1 to 1.5 inches through Sunday. Light rain showers will continue to be possible on Monday and Tuesday with high temperatures warming into the low 70s by Tuesday afternoon.

SKY/WEATHER TODAY: Cloudy with rain. The rain will taper off during the evening hours. Accumulations of 1 to 1.5 inches.

MAX TEMPERATURES / MIN RELATIVE HUMIDITY:

2000 FT: (Archie Creek) 51 to 56 degrees (Down 17-20) / 70 to 75 (Up 50)
5000 FT: (Thielsen) 45 to 50 degrees (Down 17-20) / 70 to 75 (Up 50)

EYE LEVEL WINDS:

Slope/Valley: Southwest 8-12 G20, Higher in W to E aligned canyons and drainages.
Ridges: Southwest 10-15 G20-25 mph.

Transport Wind: SW 15 mph.

LAL: 1.

Chc of Wetting Rain (> or = to 0.25"): 100%
Afternoon Mixing Height: 4,000ft AGL.

Inversion: Weak at 1,000ft AGL early.

SKY/WEATHER TONIGHT: Cloudy with occasional light rain. The rain should end early on Sunday. Snow may mix with rain at higher elevations, with Snow levels falling to 5800 feet overnight. No accumulations of snow is expected.

MIN TEMPERATURES / MAX RELATIVE HUMIDITY

2000 FT: (Archie Creek) 41 to 46 degrees (Down 5-7) / 90 to 100% (Up 20%)
5000 FT: (Thielsen) 30 to 36 degrees (Down 1-3) / 90 to 100% (Up 20%)

EYE LEVEL WINDS:

Slope/Valley: Southwest to West 8-12.
Ridges: Southwest to West 10-15 G 25.

LAL: 1.

Chc of Wetting Rain (> OR = to 0.25"): 10%

Inversion: Weak at 1000ft AGL.

2-5 Day Outlook, Sun-Wed (2000 Feet): * Upper level disturbances will bring a chance for showers through Tuesday*

Sunday: Cloudy with a chance of light rain. **High Temp:** 52-58 **Min RH:** 60. **Wind:** SW-W 10 G20.

Monday: Mostly cloudy with light rain likely. **High Temp:** 61-66 **Min RH:** 50. **Wind:** SW-W 5 G12.

Tuesday: Cloudy with a chance of rain showers. **High Temp:** 66-71 **Min RH:** 50. **Wind:** WSW 10 G20.

Wednesday: Partly Cloudy. **High Temp:** 67-72 **Min RH:** 30. **Wind:** WSW 10 G15.

Observations from midnight through 1700 PDT Friday, 10/9/20:

North Bank (1913ft): Temps 51F/72F, RH: 94%/48%, Pk Wind: NW 14 G20 mph.

Little River IRAWS (2100ft): Temps 50F/77F, RH: 84%/35%, Pk Wind: SW 9 G16 mph.

Grandad (2900ft): Temps: 47F/75F, RH: 94%/29%, Pk Wind: SW 6 G11 mph.

Lookout Mtn PRAWS (4739ft): Temps: 53F/68F, 57%/33%, Pk Wind: W 1 G4 mph.

Cinnamon (4834ft): Temps: 35F/71F, 88%/23%, Pk Wind: WNW 5 G15 mph.

FIRE BEHAVIOR FORECAST

FORECAST NUMBER: 30	TYPE OF FIRE: Wildland
FIRE NAME: Archie Creek / Thielsen	OPERATIONAL PERIOD: Oct. 10, 2020 0700-1900
DATE ISSUED: October 9, 2020	TIME ISSUED: 2000 Hours
UNIT: Umpqua NF	SIGNED: _____ Don Strand _____ Typed/printed:

INPUTS

WEATHER SUMMARY: See attached forecast
Archie Creek: Temps 56, Min RH's 75%, Winds-SW 10 mph with gusts 20-25 mph.
Thielsen: Temps 50, Min RH's 75%, Winds- SW 10 mph with gusts 20-25 mph.

OUTPUTS

FIRE BEHAVIOR

GENERAL: Expect minimal fire behavior due to precipitation. 100-hour surface fuels and smaller will become unavailable to burn. Larger logs and woody debris may continue to be consumed in those areas where visible smokes have been present the last couple of days.

Archie Creek: Forecasted 1-hour fuel moistures minimums will be near 17% and 10- hour fuels near 26%, 1000- hour fuel moistures near 16%. ERC-G values will be near 21 today, down 25 from yesterday.

Thielsen: Forecasted 1-hour fuels moistures 16%, 10-hour fuels moistures will approach 26%, 1000-hour fuel moistures will be near 18%. ERC-G values will be near 18 today, down 24.

AIR OPERATIONS: Cloudy with rain and breezy. Likely low cloud ceilings

SAFETY

Gusty winds, 20 to 25 mph have potential to cause fire weakened trees and snags fall.

Maintain Situation Awareness, Adjust depending weather conditions.

Safety Message

10 October 2020

INCIDENT: Archie Creek/Thielsen

OPERATIONAL PERIOD: 0700-1900

TOPICS:

DRIVING/TRANSPORTATION

Continually evaluate road and work areas for weather impacts. Set MAP's to disengage before conditions become unsafe.

Practice defensive driving skills and maintain time and distance from other vehicles and visual obstructions such as curves and blind spots. Be aware of debris fall and logs along the right-of-way. Keep your speeds low and take your time.

COOLER/WETTER WEATHER

Cool and wet weather is here. Significant rainfall is forecasted through today and Sunday. Hopefully you have waterproofed your camp, taken steps to stay warm and dry and set MAP's to adjust your operation as weather impacts arise.

COMMON BARRIERS TO EFFECTIVE COMMUNICATION PART 3

Inconsistent body language. Nonverbal communication should reinforce what is being said, not contradict it. If you say one thing, but your body language says something else, your listener will likely feel you are being dishonest. For example, you cannot say “yes” while shaking your head no.

“Don’t forget your COVID protocols and mitigations”

SAFETY OFFICER: Troy Corn, Jack Cates

Deliberate Risk Assessment-Hazard Summary

10 October 2020

Hazard	Mitigation	Post Risk
COVID Viral Transmission	Maintain awareness of health, perform self-checks, maintain social distancing, wear face covering when within social distancing space (minimum 6'), report and isolate if not feeling well, implement Module of One and Hub/Spoke criteria to greatest extent possible, establish relationship with local public health, establish a schedule to clean all frequently touched surfaces, maintain cleanliness of own workspace, box meals by crew (no more than 20), single person distribution for meals and hydration (24 hour supply of hydration each day supplied with breakfast)	Low
Extraction Time	Identify medivac sites and helispots. Initiate ground transport to accident site. Identify EMT's from resources assigned to division. Provide line qualified paramedics to each division as available. Review IWI protocol to ensure familiarity. Utilize short haul in remote areas. Evaluate on-going need for repositioning medical personnel.	High
Steep Terrain/Gravity	Do not work crews above or below each other. Post lookouts for rolling material. Watch footing in loose soil, rock and around vegetation. Do not work below heavy equipment. Scout and identify travel routes. Establish LCES.	Moderate
Physical Factors	Maintain hydration schedule. Closely monitor work rate and implement rest periods. Maintain nutrition. Ensure adequate work/rest.	Moderate
Environmental Factors	Assign medical personnel to camp. Assess for known allergies and report to medical personnel. Obtain Bee Bopper/wasp spray and yellow jacket traps. Locate dumpsters/trash, food and feeding areas away from sleeping and assembly areas. Establish work windows during periods of heavy rainfall and/or cold weather conditions. Evaluate transportation routes for washout and debris fall potential and establish MAP for disengagement.	Moderate
Snags/Falling	Conduct on-going risk analysis of all work areas. Use mechanized falling to the greatest extent possible. Avoid use of agency personnel for hand falling. Follow Hazard Tree Safety Guidelines (IRPG page 22). Ensure use of protective equipment. Use qualified personnel for danger tree identification.	High
Transportation	Signing of all incident roads that provide access to divisions. Daily updated travel plan maps. In local communities obey the posted speed limits. Use reader boards to control entry as needed. Identify and evaluate contingency and alternate escape and travel routes, implement controls as needed. Practice defensive driving. Maintain an awareness of wildlife, rock fall and heavy truck traffic. Reduce speed and increase following distance as needed.	High
Aircraft	Ensure all resources are a safe distance from all bucket and retardant drops. Establish LCES. Utilize air to ground primary radio channel. Reference IRPG (Safe aircraft operations pg. 56-58). Ensure IA resources have coordination with unassigned local air resources to provide deconfliction.	High
Public Interaction	Implement road and area closures in and adjacent to the perimeter.	Moderate
Heavy Equipment	Post lookouts around equipment work areas. Establish communications with equipment boss and operator. Do not work down slope from equipment. Familiarize crews with specialty equipment and processes.	High

Division/Group Assignment List (ICS 204 WF)
Controlled Unclassified Information//Basic

1. Incident Name:			3.			
ARCHIE CREEK			Branch:		Division/Group:	
2. Operational Period: DAY			A/R/S			
Date/Time From: 10/10/2020 0700 SAT		Date/Time To: 10/10/2020 1900 SAT				
4. Operations Personnel						
OPERATIONS CHIEF		JEFF BOUSCHOR; TONY ENGEL MATT CASTLE		DIVISION/GROUP SUPERVISOR		LARRY LEACH
AIR ATTACK SUPERVISOR		TIM LYDA		SAFETY OFFICER		TROY CORN JACK CATES
5. Resources Assigned this Period						
Strike Team / Task Force / Resource Designator		LWD	Leader	Number Persons	Drop Off PT./Time	Pick Up PT./Time
O-589.8 SOFR		10/18	CODY TRABER	1	ARCHIE CK ICP/0700	ARCHIE CK ICP/1900
E-383 ENG3 OR-UPF 35		10/15	MARISSA DUARTE	5	ARCHIE CK ICP/0700	ARCHIE CK ICP/1900
E-312 EXCA WARREN PARTRIDGE CONTR T2		10/14	MICHELLE PARTRIDGE	1	ARCHIE CK ICP/0700	ARCHIE CK ICP/1900
E-8190 LDFR DEAN LOGGING				1	GLIDE LOG YARD/0700	GLIDE LOG YARD/1900
O-70 REAF			LUIS PALACIOS	1	ARCHIE CK ICP/0700	ARCHIE CK ICP/1900
O-359 FFT2 (W/ READS)			BENJAMIN PURSLEY	1	ARCHIE CK ICP/0700	ARCHIE CK ICP/1900
O-360 REAF			ALAN HEATH	1	ARCHIE CK ICP/0700	ARCHIE CK ICP/1900
O-502 ARCH		10/12	TROY FERONE	1	ARCHIE CK ICP/0700	ARCHIE CK ICP/1900
O-430 REMS BEYOND THE EDGE		10/13	RAY STORM	4	ARCHIE CK ICP/0700	ARCHIE CK ICP/1900
E-175 AMBU AMR MEDIC 3		10/19	SEAN RAWSON	2	ARCHIE CK ICP/0700	ARCHIE CK ICP/1900
6. Control Operations/Work Assignments:						
Task: Patrol and Mop-up as needed. Complete suppression repair per repair plan standards. Purpose: Continue to protect values and limit resource damage through suppression efforts. End State: To eliminate the threat to improvements and timber values.						
7. Special Instructions:						
8. Division/Group Communication Summary						
Function	Channel	RX Frequency N/W	RX Tone/NAC	TX Frequency N/W	TX Tone/NAC	Mode
TACTICAL	1	168.0500N	123.0	168.0500N	123.0	A
COMMAND	7	171.8250N	123.0	168.4250N	123.0	A
COMMAND	9	170.4500N	123.0	168.1000N	123.0	A
AIR TO GROUND	14	172.6750N		172.6750N		A
9. Prepared By (Resource Unit Leader)			Approved By (Planning Section Chief)		Date	Time
JILL JOHNSON			MARGE HUTCHINSON		10/09/2020	2000

Division/Group Assignment List (ICS 204 WF)
Controlled Unclassified Information//Basic

1. Incident Name:			3.			
ARCHIE CREEK			Branch:		Division/Group:	
2. Operational Period: DAY					F/H/K	
Date/Time From: 10/10/2020 0700 SAT		Date/Time To: 10/10/2020 1900 SAT				
4. Operations Personnel						
OPERATIONS CHIEF		JEFF BOUSCHOR; TONY ENGEL MATT CASTLE		DIVISION/GROUP SUPERVISOR		MATT KENNEDY
AIR ATTACK SUPERVISOR		TIM LYDA		SAFETY OFFICER		TROY CORN JACK CATES
5. Resources Assigned this Period						
Strike Team / Task Force / Resource Designator		LWD	Leader	Number Persons	Drop Off PT./Time	Pick Up PT./Time
O-589.8 SOFR		10/18	CODY TRABER	1	ARCHIE CK ICP/0700	ARCHIE CK ICP/1900
E-316 EXCA SANTUCCI RANCH TURF		10/21	ROSS PHINNEY	2	ARCHIE CK ICP/0700	ARCHIE CK ICP/1900
E-327 CHIP A&H FORESTRY, LLC		10/10	DREW STONEBERG	2	ARCHIE CK ICP/0700	ARCHIE CK ICP/1900
E-310 TUB GRINDER NEXTERRA		10/15	JOE NUTTBROCK	1	ARCHIE CK ICP/0700	ARCHIE CK ICP/1900
E-431 LDFR DEAN INNOVATIONS		10/19	ARTURO MICHEL	1	ARCHIE CK ICP/0700	ARCHIE CK ICP/1900
E-432 TDMP CLINT HATFIELD TRUCKING		10/22	RICHARD HILLYARD	1		
E-433 TDMP CLINT HATFIELD TRUCKING		10/20	BRIAN DELCOLLO	1	ARCHIE CK ICP/0700	ARCHIE CK ICP/1900
E-434 TDMP DEAN INNOVATIONS, DUMP TRUCK		10/19	MARSHALL MILLS	1	ARCHIE CK ICP/0700	ARCHIE CK ICP/1900
O-70 REAF			LUIS PALACIOS	1	ARCHIE CK ICP/0700	ARCHIE CK ICP/1900
O-359 FFT2 (W/ READS)			BENJAMIN PURSLEY	1	ARCHIE CK ICP/0700	ARCHIE CK ICP/1900
O-360 REAF			ALAN HEATH	1	ARCHIE CK ICP/0700	ARCHIE CK ICP/1900
O-450 READ		10/12	RON MCMULLIN	1	ARCHIE CK ICP/0700	ARCHIE CK ICP/1900
O-502 ARCH		10/12	TROY FERONE	1	ARCHIE CK ICP/0700	ARCHIE CK ICP/1900
E-286 AMBU MEDIC 4		10/09	ALBIN/PARSON	2	ARCHIE CK ICP/0700	ARCHIE CK ICP/1900
O-479 REMS ALBQ		10/10	ANDREW WEST	4	ARCHIE CK ICP/0700	ARCHIE CK ICP/1900
8. Division/Group Communication Summary						
Function	Channel	RX Frequency N/W	RX Tone/NAC	TX Frequency N/W	TX Tone/NAC	Mode
TACTICAL	2	168.2000N	123.0	168.2000N	123.0	A
COMMAND	10	169.5375N	123.0	164.7125N	123.0	A
COMMAND	13	170.5500N	103.5	164.8000N	192.8	A
AIR TO GROUND	14	172.6750N		172.6750N		A
9. Prepared By (Resource Unit Leader)			Approved By (Planning Section Chief)		Date	Time
JILL JOHNSON			MARGE HUTCHINSON		10/09/2020	2000

Division/Group Assignment List (ICS 204 WF)
Controlled Unclassified Information//Basic

1. Incident Name:			3.			
ARCHIE CREEK			Branch:		Division/Group:	
2. Operational Period: DAY					F/H/K	
Date/Time From: 10/10/2020 0700 SAT		Date/Time To: 10/10/2020 1900 SAT				
4. Operations Personnel						
OPERATIONS CHIEF		JEFF BOUSCHOR; TONY ENGEL MATT CASTLE		DIVISION/GROUP SUPERVISOR		MATT KENNEDY
AIR ATTACK SUPERVISOR		TIM LYDA		SAFETY OFFICER		TROY CORN JACK CATES
5. Resources Assigned this Period						
Strike Team / Task Force / Resource Designator		LWD	Leader	Number Persons	Drop Off PT./Time	Pick Up PT./Time
6. Control Operations/Work Assignments:						
<p>Task: Patrol to ensure fire stays within established control features. Continue suppression repair per repair plan standards. Purpose: Protection of timber resources and improvements. End State To eliminate the threat to improvements and timber values.</p>						
7. Special Instructions:						
O-314 FMOD C&K Wildland Fire 6 on R&R 10/9-10/10, will return to Division on 10/11.						
8. Division/Group Communication Summary						
Function	Channel	RX Frequency N/W	RX Tone/NAC	TX Frequency N/W	TX Tone/NAC	Mode
TACTICAL	2	168.2000N	123.0	168.2000N	123.0	A
COMMAND	10	169.5375N	123.0	164.7125N	123.0	A
COMMAND	13	170.5500N	103.5	164.8000N	192.8	A
AIR TO GROUND	14	172.6750N		172.6750N		A
9. Prepared By (Resource Unit Leader)			Approved By (Planning Section Chief)		Date	Time
JILL JOHNSON			MARGE HUTCHINSON		10/09/2020	2000

Division/Group Assignment List (ICS 204 WF)
Controlled Unclassified Information//Basic

1. Incident Name:			3.			
ARCHIE CREEK			Branch:		Division/Group:	
2. Operational Period: DAY			N/Q			
Date/Time From: 10/10/2020 0700 SAT		Date/Time To: 10/10/2020 1900 SAT				
4. Operations Personnel						
OPERATIONS CHIEF		JEFF BOUSCHOR; TONY ENGEL MATT CASTLE		DIVISION/GROUP SUPERVISOR		MICHAEL JACKSON
AIR ATTACK SUPERVISOR		TIM LYDA		SAFETY OFFICER		TROY CORN JACK CATES
5. Resources Assigned this Period						
Strike Team / Task Force / Resource Designator		LWD	Leader	Number Persons	Drop Off PT./Time	Pick Up PT./Time
O-561 SOF1 (T)		10/15	JOHN FUGITT	1	ARCHIE CK ICP/0700	ARCHIE CK ICP/1900
O-515 TFLD		10/13	THADDEUS NIEBEL	1	ARCHIE CK ICP/0700	ARCHIE CK ICP/1900
O-96 FMOD STUFFLEBEAM		10/12	JAMES BORG	2	ARCHIE CK ICP/0700	ARCHIE CK ICP/1900
C-70 HC2I UMPQUA NORTH ZONE #3		10/19	SKYLER SHRUM	17	ARCHIE CK ICP/0700	ARCHIE CK ICP/1900
C-72 HC2I UMPQUA SOUTH ZONE 2		10/24	JASON DUNN	13	ARCHIE CK ICP/0700	ARCHIE CK ICP/1900
E-232 ENG4 WILDFIRE SERVICES 5		10/17	JASON SARE	3	ARCHIE CK ICP/0700	ARCHIE CK ICP/1900
E-353 ENG4 FOREST SERVICE		10/11	LUKE TALCOTT	8	ARCHIE CK ICP/0700	ARCHIE CK ICP/1900
E-365 ENG3 ORUPF ENGINE 14		10/13	IAN PROFITT	4	ARCHIE CK ICP/0700	ARCHIE CK ICP/1900
E-244 DOZ3 PACIFIC RIDGELINE FORESTRY		10/17	TONY BALDWIN	2	ARCHIE CK ICP/0700	ARCHIE CK ICP/1900
E-313 EXCA OWENS FREIGHT LINES, INC		10/10	RHETT SMITH	2	ARCHIE CK ICP/0700	ARCHIE CK ICP/1900
E-337 EXCA MASTICATOR-BOOM MOUNTED,T3		10/11	DOUG STAFF	2	ARCHIE CK ICP/0700	ARCHIE CK ICP/1900
E-357 EXCA MARK JONES TRUCKING		10/12	MARK BARTLETT	2	ARCHIE CK ICP/0700	ARCHIE CK ICP/1900
E-90 FEL2 MARK JONES TRUCKING		10/15	MARK GODWIN	1	ARCHIE CK ICP/0700	ARCHIE CK ICP/1900
E-161 MAST JERRY SWEARINGEN CONSTR		10/14	JERRY SWEARINGEN	2	ARCHIE CK ICP/0700	ARCHIE CK ICP/1900
E-385 CHIP PACIFIC RIDGLELINE		10/16	GARY WYLEY	1	ARCHIE CK ICP/0700	ARCHIE CK ICP/1900
E-384 CHIP ZEBS TREE SVC		10/15	JORDAN ALLBRITTON	2	ARCHIE CK ICP/0700	ARCHIE CK ICP/1900
E-386 CHIP SAYLOR CONSTRUCTION		10/20	RYAN SAYLOR	1	ARCHIE CK ICP/0700	ARCHIE CK ICP/1900
8. Division/Group Communication Summary						
Function	Channel	RX Frequency N/W	RX Tone/NAC	TX Frequency N/W	TX Tone/NAC	Mode
TACTICAL	5	166.7750N	123.0	166.7750N	123.0	A
COMMAND	8	173.5000N	123.0	168.5625N	123.0	A
COMMAND	9	170.4500N	123.0	168.1000N	123.0	A
AIR TO GROUND	14	172.6750N		172.6750N		A
9. Prepared By (Resource Unit Leader)			Approved By (Planning Section Chief)		Date	Time
JILL JOHNSON			MARGE HUTCHINSON		10/09/2020	2000

Division/Group Assignment List (ICS 204 WF)
Controlled Unclassified Information//Basic

1. Incident Name:				3.		
ARCHIE CREEK				Branch:	Division/Group: N/Q	
2. Operational Period: DAY						
Date/Time From: 10/10/2020 0700 SAT		Date/Time To: 10/10/2020 1900 SAT				
4. Operations Personnel						
OPERATIONS CHIEF		JEFF BOUSCHOR; TONY ENGEL MATT CASTLE		DIVISION/GROUP SUPERVISOR		MICHAEL JACKSON
AIR ATTACK SUPERVISOR		TIM LYDA		SAFETY OFFICER		TROY CORN JACK CATES
5. Resources Assigned this Period						
Strike Team / Task Force / Resource Designator		LWD	Leader	Number Persons	Drop Off PT./Time	Pick Up PT./Time
E-48 LOG TRK MARK JONES TRUCKING		10/18	MARK JONES	1	ARCHIE CK ICP/0700	ARCHIE CK ICP/1900
E-49 LOG TRK MARK JONES TRUCKING		10/06	RICK SMITH	1	ARCHIE CK ICP/0700	ARCHIE CK ICP/1900
E-92 LDFR NW LOGGING INC		10/18	LEO MILLER	2	ARCHIE CK ICP/0700	ARCHIE CK ICP/1900
O-66 REAF			JESSE SOY	1	ARCHIE CK ICP/0700	ARCHIE CK ICP/1900
O-70 REAF			LUIS PALACIOS	1	ARCHIE CK ICP/0700	ARCHIE CK ICP/1900
O-140 READ			CHRIS WOODCOCK	1	ARCHIE CK ICP/0700	ARCHIE CK ICP/1900
O-359 FFT2		10/08	BENJAMIN PURSLEY	1	ARCHIE CK ICP/0700	ARCHIE CK ICP/1900
O-360 REAF			ALAN HEATH	1	ARCHIE CK ICP/0700	ARCHIE CK ICP/1900
O-384 REAF (T)			JOHN ANTHONY	1	ARCHIE CK ICP/0700	ARCHIE CK ICP/1900
O-486 REAF (T)		10/10	DANE SJODEN	1	ARCHIE CK ICP/0700	ARCHIE CK ICP/1900
O-502 ARCH		10/12	TROY FERONE	1	ARCHIE CK ICP/0700	ARCHIE CK ICP/1900
O-382 REM DOUGLAS CO		10/19	MIKE WECKS	4	ARCHIE CK ICP/0700	ARCHIE CK ICP/1900
E-29 AMBU MEDIC 1		10/12	HUDSON/PLUMMER	2	ARCHIE CK ICP/0700	ARCHIE CK ICP/1900
E-291 AMBU MEDIC 5		10/14	GREG EDWARDS	2	ARCHIE CK ICP/0700	ARCHIE CK ICP/1900
8. Division/Group Communication Summary						
Function	Channel	RX Frequency N/W	RX Tone/NAC	TX Frequency N/W	TX Tone/NAC	Mode
TACTICAL	5	166.7750N	123.0	166.7750N	123.0	A
COMMAND	8	173.5000N	123.0	168.5625N	123.0	A
COMMAND	9	170.4500N	123.0	168.1000N	123.0	A
AIR TO GROUND	14	172.6750N		172.6750N		A
9. Prepared By (Resource Unit Leader)			Approved By (Planning Section Chief)		Date	Time
JILL JOHNSON			MARGE HUTCHINSON		10/09/2020	2000

Division/Group Assignment List (ICS 204 WF)
Controlled Unclassified Information//Basic

1. Incident Name:			3.			
ARCHIE CREEK			Branch:		Division/Group:	
2. Operational Period: DAY			N/Q			
Date/Time From: 10/10/2020 0700 SAT		Date/Time To: 10/10/2020 1900 SAT				
4. Operations Personnel						
OPERATIONS CHIEF		JEFF BOUSCHOR; TONY ENGEL MATT CASTLE		DIVISION/GROUP SUPERVISOR		MICHAEL JACKSON
AIR ATTACK SUPERVISOR		TIM LYDA		SAFETY OFFICER		TROY CORN JACK CATES
5. Resources Assigned this Period						
Strike Team / Task Force / Resource Designator		LWD	Leader	Number Persons	Drop Off PT./Time	Pick Up PT./Time
6. Control Operations/Work Assignments:						
<p>Task: Patrol to ensure fire stays within established control features. Continue suppression repair per repair plan standards. Reduce Danger trees along 4712 road.</p> <p>Purpose: Protection of timber resources and improvements. Allow current and future work forces to safely travel along the road corridors.</p> <p>End State: To eliminate the threat to improvements and timber values. Reduce hazards along road system.</p>						
7. Special Instructions:						
E-9 ENG6 First Strike - R&R on 10/10-10/11, return to Division on 10/12.						
8. Division/Group Communication Summary						
Function	Channel	RX Frequency N/W	RX Tone/NAC	TX Frequency N/W	TX Tone/NAC	Mode
TACTICAL	5	166.7750N	123.0	166.7750N	123.0	A
COMMAND	8	173.5000N	123.0	168.5625N	123.0	A
COMMAND	9	170.4500N	123.0	168.1000N	123.0	A
AIR TO GROUND	14	172.6750N		172.6750N		A
9. Prepared By (Resource Unit Leader)			Approved By (Planning Section Chief)		Date	Time
JILL JOHNSON			MARGE HUTCHINSON		10/09/2020	2000

Division/Group Assignment List (ICS 204 WF)
Controlled Unclassified Information//Basic

1. Incident Name:			3.			
ARCHIE CREEK			Branch:		Division/Group:	
2. Operational Period: DAY			WRIGHT CREEK			
Date/Time From: 10/10/2020 0700 SAT		Date/Time To: 10/10/2020 1900 SAT				
4. Operations Personnel						
OPERATIONS CHIEF		JEFF BOUSCHOR; TONY ENGEL MATT CASTLE		DIVISION/GROUP SUPERVISOR		BOB HINDS JAMES DICKINSON (T)
AIR ATTACK SUPERVISOR		TIM LYDA		SAFETY OFFICER		TROY CORN JACK CATES
5. Resources Assigned this Period						
Strike Team / Task Force / Resource Designator		LWD	Leader	Number Persons	Drop Off PT./Time	Pick Up PT./Time
O-488 SOFR		10/10	CHAD HYATT	1	ARCHIE CK ICP/0700	ARCHIE CK ICP/1900
O-643 SOF2		10/22	JOHN STUCHELL	1	ARCHIE CK ICP/0700	ARCHIE CK ICP/1900
O-464 TFLD		10/10	JESSICA HILFERS	1	ARCHIE CK ICP/0700	ARCHIE CK ICP/1900
O-524 TFLD		10/13	ERIC ANDERSON	1	ARCHIE CK ICP/0700	ARCHIE CK ICP/1900
O-598 HEQB		10/17	JOHN CAROON	1	ARCHIE CK ICP/0700	ARCHIE CK ICP/1900
O-607 HEQB (T)		10/17	KENNY LEMMONDS	1	ARCHIE CK ICP/0700	ARCHIE CK ICP/1900
O-14 FMOD TIMBER TIPPER		10/22	C. ABAUGH/G. REDDEKOPP	2	ARCHIE CK ICP/0700	ARCHIE CK ICP/1900
O-361 FMOD TIMBER TIPPER		10/19	RAY SCHLATTER	2	ARCHIE CK ICP/0700	ARCHIE CK ICP/1900
E-317 EXCA T1 MARK JONES TRUCKING		10/10	JOHN JONES	1	ARCHIE CK ICP/0700	ARCHIE CK ICP/1900
E-318 EXCA URE OUTDOORS		10/17	DON GILBERT	1	ARCHIE CK ICP/0700	ARCHIE CK ICP/1900
E-336 EXCA T2 JUSTIN PITTS TRUCKING		10/11	KEN OGDEN	2	ARCHIE CK ICP/0700	ARCHIE CK ICP/1900
E-329 LDFR MILLER TIMBER SVCS 280		10/10	KYLE SWANK	1	ARCHIE CK ICP/0700	ARCHIE CK ICP/1900
E-346 LDFR J&D LOGGING & CONTR		10/13	COLBY BRADFORD	2	ARCHIE CK ICP/0700	ARCHIE CK ICP/1900
E-347 LDFR J&D LOGGING & CONTR		10/13	JOHN SANOWSKI	2	ARCHIE CK ICP/0700	ARCHIE CK ICP/1900
E-8191 LDFR MARK JONES TRUCKING		10/16	BILL DELANEY	2	ARCHIE CK ICP/0700	ARCHIE CK ICP/1900
E-341 SKD1 MARK JONES TRUCKING		10/10	SABASTIAN FLORENCE	2	ARCHIE CK ICP/0700	ARCHIE CK ICP/1900
E-360 SKD1 WARREN PARTRIDGE		10/15	WARREN PARTRIDGE	1	ARCHIE CK ICP/0700	ARCHIE CK ICP/1900
E-100 FEL1 PONSEE HARVESTER MILLER		10/18	TREVEN OKES	2	ARCHIE CK ICP/0700	ARCHIE CK ICP/1900
E-8200 TDMP BELLOIR TRUCKING INC		10/11	RANDY BELLOIR	1	ARCHIE CK ICP/0700	ARCHIE CK ICP/1900
E-8201 TDMP MARSHALL TRUCKING		10/11	JAMES ROARK	1	ARCHIE CK ICP/0700	ARCHIE CK ICP/1900
8. Division/Group Communication Summary						
Function	Channel	RX Frequency N/W	RX Tone/NAC	TX Frequency N/W	TX Tone/NAC	Mode
TACTICAL	3	168.6000N	123.0	168.6000N	123.0	A
COMMAND	7	171.8250N	123.0	168.4250N	123.0	A
COMMAND	10	169.5375N	123.0	164.7125N	123.0	A
AIR TO GROUND	14	172.6750N		172.6750N		A
9. Prepared By (Resource Unit Leader)			Approved By (Planning Section Chief)		Date	Time
JILL JOHNSON			MARGE HUTCHINSON		10/09/2020	2000

Division/Group Assignment List (ICS 204 WF)
Controlled Unclassified Information//Basic

1. Incident Name:			3.			
ARCHIE CREEK			Branch:		Division/Group:	
2. Operational Period: DAY			WRIGHT CREEK			
Date/Time From: 10/10/2020 0700 SAT		Date/Time To: 10/10/2020 1900 SAT				
4. Operations Personnel						
OPERATIONS CHIEF		JEFF BOUSCHOR; TONY ENGEL MATT CASTLE		DIVISION/GROUP SUPERVISOR		BOB HINDS JAMES DICKINSON (T)
AIR ATTACK SUPERVISOR		TIM LYDA		SAFETY OFFICER		TROY CORN JACK CATES
5. Resources Assigned this Period						
Strike Team / Task Force / Resource Designator		LWD	Leader	Number Persons	Drop Off PT./Time	Pick Up PT./Time
O-70 REAF			LUIS PALACIOS	1	ARCHIE CK ICP/0700	ARCHIE CK ICP/1900
O-140 READ			CHRIS WOODCOCK	1	ARCHIE CK ICP/0700	ARCHIE CK ICP/1900
O-359 FFT2 (W/ READS)			BENJAMIN PURSLEY	1	ARCHIE CK ICP/0700	ARCHIE CK ICP/1900
O-360 REAF			ALAN HEATH	1	ARCHIE CK ICP/0700	ARCHIE CK ICP/1900
O-502 ARCH		10/12	TROY FERONE	1	ARCHIE CK ICP/0700	ARCHIE CK ICP/1900
O-496 EMPF		10/13	CODY BENNETT	1	ARCHIE CK ICP/0700	ARCHIE CK ICP/1900
6. Control Operations/Work Assignments:						
<p><u>Task:</u> Utilize qualified READ to identify burned and scorched danger trees. Cut, process, remove and sort danger trees that could threaten the 4711 Road (see Archie Creek and Thielsen Danger tree falling specifications). Utilize mechanized equipment to limit exposure to falling and bucking hazards. Use hand falling and bucking only as needed. Transport merchantable material to designated storage areas. Transport non-merchantable material to designated areas for chipping and storage.</p> <p><u>Purpose:</u> Remove danger trees that could potentially threaten the 4711 Road travel corridor. Prepare and store merchantable logs for disposal. Remove and chip resulting slash to reduce future fire hazard potential.</p> <p><u>End State:</u> Danger trees are identified by qualified READs and removed based on Archie Creek Fire Repair Plan. Merchantable material is available for disposal and slash hazard is reduced.</p>						
7. Special Instructions:						
O-313 FMOD C&K Wildland Fire on R&R 10/8-10/10, will return to the Division on 10/11.						
8. Division/Group Communication Summary						
Function	Channel	RX Frequency N/W	RX Tone/NAC	TX Frequency N/W	TX Tone/NAC	Mode
TACTICAL	3	168.6000N	123.0	168.6000N	123.0	A
COMMAND	7	171.8250N	123.0	168.4250N	123.0	A
COMMAND	10	169.5375N	123.0	164.7125N	123.0	A
AIR TO GROUND	14	172.6750N		172.6750N		A
9. Prepared By (Resource Unit Leader)			Approved By (Planning Section Chief)		Date	Time
JILL JOHNSON			MARGE HUTCHINSON		10/09/2020	2000

Division/Group Assignment List (ICS 204 WF)
Controlled Unclassified Information//Basic

1. Incident Name:			3.			
ARCHIE CREEK			Branch:		Division/Group:	
2. Operational Period: DAY			DFPA W/T/D/E			
Date/Time From: 10/10/2020 0700 SAT		Date/Time To: 10/10/2020 1900 SAT				
4. Operations Personnel						
OPERATIONS CHIEF				DIVISION/GROUP SUPERVISOR		PAUL RITTER (541) 580-7149
SAFETY OFFICER						
5. Resources Assigned this Period						
Strike Team / Task Force / Resource Designator		LWD	Leader	Number Persons	Drop Off PT./Time	Pick Up PT./Time
ENG T6 #15-01			K. SMITH (541)530-0477	2		
ENG T6 #11-15			T.BABIKOFF (541)671-3363	2		
ENG T6 #89-88			J. BROWN (541)580-5117	2		
6. Control Operations/Work Assignments:						
<ul style="list-style-type: none"> • Monitor and patrol lines • Backhaul equipment no longer needed • Identify and complete needed suppression repair on private lands • Coordinate and communicate with federal resources and IMT 						
7. Special Instructions:						
8. Division/Group Communication Summary						
Function	Channel	RX Frequency N/W	RX Tone/NAC	TX Frequency N/W	TX Tone/NAC	Mode
TACTICAL	6	151.3400N	156.7	151.3400N	156.7	A
COMMAND	11	151.1600N	146.2	159.4725N	146.2	A
AIR TO GROUND	14	172.6750N		172.6750N		A
AIR TO GROUND	15	172.4625N		172.4625N		A
9. Prepared By (Resource Unit Leader)			Approved By (Planning Section Chief)		Date	Time
JILL JOHNSON			MARGE HUTCHINSON		10/09/2020	2000

Division/Group Assignment List (ICS 204 WF)
Controlled Unclassified Information//Basic

1. Incident Name:			3.			
THIELSEN			Branch:		Division/Group:	
2. Operational Period: DAY			THIELSEN		A/M/P/W	
Date/Time From: 10/10/2020 0700 SAT		Date/Time To: 10/10/2020 1900 SAT				
4. Operations Personnel						
OPERATIONS CHIEF		JEFF BOUSCHOR; TONY ENGEL MATT CASTLE		BRANCH DIRECTOR		AARON ROWE
DIVISION/GROUP SUPERVISOR		CODY ACORD CHRIS WHITE (T)		SAFETY OFFICER		TROY CORN JACK CATES
5. Resources Assigned this Period						
Strike Team / Task Force / Resource Designator	LWD	Leader	Number Persons	Drop Off PT./Time	Pick Up PT./Time	
O-549 SOF1	10/14	IVAN CUPP	1	THIELSEN SPIKE/0700	THIELSEN SPIKE/1900	
O-589.2 SOF2	10/18	TODD CAMM	1	THIELSEN SPIKE/0700	THIELSEN SPIKE/1900	
O-186 TFLD	10/16	LEE MICHAEL NELSON	1	THIELSEN SPIKE/0700	THIELSEN SPIKE/1900	
O-646 TFLD	10/21	MEREDITH CHILDS	1	THIELSEN SPIKE/0700	THIELSEN SPIKE/1900	
O-95 HEQB (T)	10/11	DUSTIN APPLETON	1	THIELSEN SPIKE/0700	THIELSEN SPIKE/1900	
O-96 HEQB	10/11	JAMES LINDSAY	1	THIELSEN SPIKE/0700	THIELSEN SPIKE/1900	
O-125 HEQB (T)	10/20	MAX LEIDENFROST	1	THIELSEN SPIKE/0700	THIELSEN SPIKE/1900	
E-247 ENG6 JR WILDFIRE 07	10/22	JAMES RETTSTATT	3	THIELSEN SPIKE/0700	THIELSEN SPIKE/1900	
E-8 DOZ3 BOB MURRAY LOGGING	10/23	GARCIA UNDERWOOD	1	THIELSEN SPIKE/0700	THIELSEN SPIKE/1900	
E-109 SKD1 MARK JONES TRUCKING	10/10	CASEY HUNTLEY	2	THIELSEN SPIKE/0700	THIELSEN SPIKE/1900	
E-54 EXCA B ROCK READY	10/16	GLEN ROBINSON	1	THIELSEN SPIKE/0700	THIELSEN SPIKE/1900	
E-147 EXCA SCOTT MARSHALL TRUCKING	10/13	KEVIN HOLMSTROM	1	THIELSEN SPIKE/0700	THIELSEN SPIKE/1900	
E-148 EXCA SHAD STUFFLEBEAM CUTTING	10/13	JOE LILLIE	1	THIELSEN SPIKE/0700	THIELSEN SPIKE/1900	
E-45 FEL1 MARK JONES TRUCKING	10/11	TYLER LARCEY	2	THIELSEN SPIKE/0700	THIELSEN SPIKE/1900	
E-335 GRINDER		RAY BREWINGTON	2	THIELSEN SPIKE/0700	THIELSEN SPIKE/1900	
O-6 READ	10/10	JEDIDIAH HANCOCK	1	THIELSEN SPIKE/0700	THIELSEN SPIKE/1900	
O-134 REAF	10/11	SOPHIA KIM	1	THIELSEN SPIKE/0700	THIELSEN SPIKE/1900	
O-191 READ (T)	10/22	DYLAN HOKANSON	1	THIELSEN SPIKE/0700	THIELSEN SPIKE/1900	
8. Division/Group Communication Summary						
Function	Channel	RX Frequency N/W	RX Tone/NAC	TX Frequency N/W	TX Tone/NAC	Mode
COMMAND	1	171.4250N	103.5	166.0000N	192.8	A
COMMAND	11	169.7500N	123.0	167.1000N	123.0	A
TACTICAL	5	168.2625N	103.5	168.2625N	103.5	A
AIR TO GROUND	13	171.1125N		171.1125N		A
9. Prepared By (Resource Unit Leader)		Approved By (Planning Section Chief)		Date	Time	
JILL JOHNSON		MARGE HUTCHINSON		10/09/2020	2000	

Division/Group Assignment List (ICS 204 WF)
Controlled Unclassified Information//Basic

1. Incident Name:			3.			
THIELSEN			THIELSEN		A/M/P/W	
2. Operational Period: DAY						
Date/Time From: 10/10/2020 0700 SAT		Date/Time To: 10/10/2020 1900 SAT				
4. Operations Personnel						
OPERATIONS CHIEF		JEFF BOUSCHOR; TONY ENGEL MATT CASTLE		BRANCH DIRECTOR		AARON ROWE
DIVISION/GROUP SUPERVISOR		CODY ACORD CHRIS WHITE (T)		SAFETY OFFICER		TROY CORN JACK CATES
5. Resources Assigned this Period						
Strike Team / Task Force / Resource Designator		LWD	Leader	Number Persons	Drop Off PT./Time	Pick Up PT./Time
O-157 EMTF		10/13	DALE HOOVER	1	THIELSEN SPIKE/0700	THIELSEN SPIKE/1900
O-175 EMTF		10/15	CAYLA FORSYTHE	1	THIELSEN SPIKE/0700	THIELSEN SPIKE/1900
O-328 EMPF		10/11	RYAN GREGOR	1	THIELSEN SPIKE/0700	THIELSEN SPIKE/1900
E-71 AMBU AMBO 1571		10/12	FRED SIEWERT	1	THIELSEN SPIKE/0700	THIELSEN SPIKE/1900
6. Control Operations/Work Assignments:						
<p>Task: Patrol and Mop-up as needed. Complete suppression repair per repair plan standards. Purpose: Continue to protect values and limit resource damage through suppression efforts. End State: To eliminate the threat to values at risk.</p>						
7. Special Instructions:						
8. Division/Group Communication Summary						
Function	Channel	RX Frequency N/W	RX Tone/NAC	TX Frequency N/W	TX Tone/NAC	Mode
COMMAND	1	171.4250N	103.5	166.0000N	192.8	A
COMMAND	11	169.7500N	123.0	167.1000N	123.0	A
TACTICAL	5	168.2625N	103.5	168.2625N	103.5	A
AIR TO GROUND	13	171.1125N		171.1125N		A
9. Prepared By (Resource Unit Leader)			Approved By (Planning Section Chief)		Date	Time
JILL JOHNSON			MARGE HUTCHINSON		10/09/2020	2000

Division/Group Assignment List (ICS 204 WF)
Controlled Unclassified Information//Basic

1. Incident Name:			3.			
THIELSEN			Branch:		Division/Group:	
2. Operational Period: DAY			THIELSEN		NORTH DIAMOND	
Date/Time From: 10/10/2020 0700 SAT		Date/Time To: 10/10/2020 1900 SAT				
4. Operations Personnel						
OPERATIONS CHIEF		JEFF BOUSCHOR; TONY ENGEL MATT CASTLE		BRANCH DIRECTOR		AARON ROWE
DIVISION/GROUP SUPERVISOR		RICHARD TINGLE JEFF PRICHER		SAFETY OFFICER		TROY CORN JACK CATES
5. Resources Assigned this Period						
Strike Team / Task Force / Resource Designator	LWD	Leader	Number Persons	Drop Off PT./Time	Pick Up PT./Time	
O-549 SOF1	10/14	IVAN CUPP	1	THIELSEN SPIKE/0700	THIELSEN SPIKE/1900	
O-589.2 SOF2	10/18	TODD CAMM	1	THIELSEN SPIKE/0700	THIELSEN SPIKE/1900	
O-19 TFLD	10/10	BRIAN SMITH	1	THIELSEN SPIKE/0700	THIELSEN SPIKE/1900	
O-187 TFLD	10/16	JED GETMAN	1	THIELSEN SPIKE/0700	THIELSEN SPIKE/1900	
O-18 HEQB	10/11	MICHAEL KARR	1	THIELSEN SPIKE/0700	THIELSEN SPIKE/1900	
O-188 HEQB (T)	10/16	SARAH LEE	1	THIELSEN SPIKE/0700	THIELSEN SPIKE/1900	
O-79 FMOD GOODSON LOGGING	10/18	NATHANIEL ZELLER	2	THIELSEN SPIKE/0700	THIELSEN SPIKE/1900	
E-9000 ENG3 UMPQUA 334	10/13	TOMMY DAVIS	8	THIELSEN SPIKE/0700	THIELSEN SPIKE/1900	
E-1 WTS2 LEE ROY BELLOIR & SONS	10/17	ROSS BELLOIR	1	THIELSEN SPIKE/0700	THIELSEN SPIKE/1900	
E-2 WTS2 SCOTT MARSHALL TRUCKING	10/13	JEREMIAH DIERDORF	1	THIELSEN SPIKE/0700	THIELSEN SPIKE/1900	
E-97 WTT2 ALL WET WATER TRUCKING	10/20	RICK BASSONETT	1	THIELSEN SPIKE/0700	THIELSEN SPIKE/1900	
E-109 WTS2 IRELAND INC 81	10/17	CRAIG VEY	1	THIELSEN SPIKE/0700	THIELSEN SPIKE/1900	
E-35 DOZ3 PJF INC	10/13	AARON FENTER	2	THIELSEN SPIKE/0700	THIELSEN SPIKE/1900	
E-149 DOZ1 MARK JONES	10/14	KEEGAN COOPER	2	THIELSEN SPIKE/0700	THIELSEN SPIKE/1900	
E-29 EXCA DENNY POTTER LOGGING	10/18	RAY ADAMS	2	THIELSEN SPIKE/0700	THIELSEN SPIKE/1900	
E-144 EXCA FS 1990	10/15	(USE AS NEEDED)	2	THIELSEN SPIKE/0700	THIELSEN SPIKE/1900	
E-314 EXCA TABLE MOUNTAIN FORESTRY	10/14	RYAN MINER	2	THIELSEN SPIKE/0700	THIELSEN SPIKE/1900	
E-315 EXCA TABLE ROCK FORESTRY	10/10	ART LACEY	2	THIELSEN SPIKE/0700	THIELSEN SPIKE/1900	
8. Division/Group Communication Summary						
Function	Channel	RX Frequency N/W	RX Tone/NAC	TX Frequency N/W	TX Tone/NAC	Mode
COMMAND	1	171.4250N	103.5	166.0000N	192.8	A
TACTICAL	4	169.1250N	103.5	169.1250N	103.5	A
COMMAND	11	169.7500N	123.0	167.1000N	123.0	A
AIR TO GROUND	13	171.1125N		171.1125N		A
9. Prepared By (Resource Unit Leader)			Approved By (Planning Section Chief)		Date	Time
JILL JOHNSON			MARGE HUTCHINSON		10/09/2020	2000

Division/Group Assignment List (ICS 204 WF)
Controlled Unclassified Information//Basic

1. Incident Name:			3.			
THIELSEN			Branch:		Division/Group:	
2. Operational Period: DAY			THIELSEN		NORTH DIAMOND	
Date/Time From: 10/10/2020 0700 SAT		Date/Time To: 10/10/2020 1900 SAT				
4. Operations Personnel						
OPERATIONS CHIEF		JEFF BOUSCHOR; TONY ENGEL MATT CASTLE		BRANCH DIRECTOR		AARON ROWE
DIVISION/GROUP SUPERVISOR		RICHARD TINGLE JEFF PRICHER		SAFETY OFFICER		TROY CORN JACK CATES
5. Resources Assigned this Period						
Strike Team / Task Force / Resource Designator	LWD	Leader	Number Persons	Drop Off PT./Time	Pick Up PT./Time	
E-362 EXCA MARK JONES TRUCKING	10/15	DARYLE STUBBFIELD	2	THIELSEN SPIKE/0700	THIELSEN SPIKE/1900	
E-44 FEL2 RUDE LOGGING/ FEL2	10/16	STEVE KOWING	2	THIELSEN SPIKE/0700	THIELSEN SPIKE/1900	
E-156 FEL1 RUDE LOGGING	10/15	SHAWN SKIDGEL	1	THIELSEN SPIKE/0700	THIELSEN SPIKE/1900	
E-132 TUB GRINDER LANE FORESTRY	10/12	JOE TURNEY	1	THIELSEN SPIKE/0700	THIELSEN SPIKE/1900	
E-151 SKD2 DAMON LOGGING	10/24	DAN KOMNING	2	THIELSEN SPIKE/0700	THIELSEN SPIKE/1900	
E-152 SKD2 MID VALLEY RANCH	10/14	BRAD HELLENTHAL	2	THIELSEN SPIKE/0700	THIELSEN SPIKE/1900	
E-162 SKD2 MARK JONES TRUCKING, INC	10/15	ALLAN SANFORD	1	THIELSEN SPIKE/0700	THIELSEN SPIKE/1900	
E-145 LDFR FS 6304		(STAFF AS NEEDED)		THIELSEN SPIKE/0700	THIELSEN SPIKE/1900	
E-153 LDFR LANE FOREST PRODUCTS	10/14	DARREL BOOTS	1	THIELSEN SPIKE/0700	THIELSEN SPIKE/1900	
E-42 LOG SELF LOADER MARK JONES	10/22	WILLIAM HOOVER	1	THIELSEN SPIKE/0700	THIELSEN SPIKE/1900	
E-138 TDMP FS 2943	10/13	JUSTIN GUNN	1	THIELSEN SPIKE/0700	THIELSEN SPIKE/1900	
E-139 TDMP FS 4018	10/13	RYAN NORTON	1	THIELSEN SPIKE/0700	THIELSEN SPIKE/1900	
E-140 TDMP FS 6303		(STAFF AS NEEDED)	1	THIELSEN SPIKE/0700	THIELSEN SPIKE/1900	
E-154 TDMP DEAN INNOVATIONS,	10/14	NICK ROPKINS	1	THIELSEN SPIKE/0700	THIELSEN SPIKE/1900	
E-155 TDMP DEAN INNOVATIONS	10/14	BRANDEN ROBERTS	1	THIELSEN SPIKE/0700	THIELSEN SPIKE/1900	
E-160 TDMP DUMP TRUCK FS 2996	10/15	PARISH	1	THIELSEN SPIKE/0700	THIELSEN SPIKE/1900	
E-161 TDMP DUMP TRUCK FS 6017	10/15	JOSH MARR	1	THIELSEN SPIKE/0700	THIELSEN SPIKE/1900	
E-163 TDMP DUMP TRUCK FS 7320	10/15	STOVER	1	THIELSEN SPIKE/0700	THIELSEN SPIKE/1900	
E-141 TCTL FS 4020 TILT BED TRANSPORT		(STAFF AS NEEDED)	1	THIELSEN SPIKE/0700	THIELSEN SPIKE/1900	
8. Division/Group Communication Summary						
Function	Channel	RX Frequency N/W	RX Tone/NAC	TX Frequency N/W	TX Tone/NAC	Mode
COMMAND	1	171.4250N	103.5	166.0000N	192.8	A
TACTICAL	4	169.1250N	103.5	169.1250N	103.5	A
COMMAND	11	169.7500N	123.0	167.1000N	123.0	A
AIR TO GROUND	13	171.1125N		171.1125N		A
9. Prepared By (Resource Unit Leader)			Approved By (Planning Section Chief)		Date	Time
JILL JOHNSON			MARGE HUTCHINSON		10/09/2020	2000

Division/Group Assignment List (ICS 204 WF)
Controlled Unclassified Information//Basic

1. Incident Name:			3.			
THIELSEN			Branch:		Division/Group:	
2. Operational Period: DAY			THIELSEN		NORTH DIAMOND	
Date/Time From: 10/10/2020 0700 SAT	Date/Time To: 10/10/2020 1900 SAT					
4. Operations Personnel						
OPERATIONS CHIEF		JEFF BOUSCHOR; TONY ENGEL MATT CASTLE		BRANCH DIRECTOR		AARON ROWE
DIVISION/GROUP SUPERVISOR		RICHARD TINGLE JEFF PRICHER		SAFETY OFFICER		TROY CORN JACK CATES
5. Resources Assigned this Period						
Strike Team / Task Force / Resource Designator	LWD	Leader	Number Persons	Drop Off PT./Time	Pick Up PT./Time	
E-143 GRD GRADER FS 6302		(STAFF AS NEEDED)	1	THIELSEN SPIKE/0700	THIELSEN SPIKE/1900	
O-149 REAF (T)	10/13	ERIC MICHAEL HELEBRANT	1	THIELSEN SPIKE/0700	THIELSEN SPIKE/1900	
E-72 AMBU MED TRANSPORT	10/13	CHRIS ARVIDSON	2	THIELSEN SPIKE/0700	THIELSEN SPIKE/1900	
6. Control Operations/Work Assignments:						
Task: Remove all Danger Trees within 150ft of road. Improve ingress and egress from the 005 to Hwy 138. Deck merchantable logs. Tub Grind non-merch and spread chips. Purpose: Protect life and property from fire weakened trees. End State: Trees are removed from roadways to create future contingency lines for Diamond Lake Community.						
7. Special Instructions:						
8. Division/Group Communication Summary						
Function	Channel	RX Frequency N/W	RX Tone/NAC	TX Frequency N/W	TX Tone/NAC	Mode
COMMAND	1	171.4250N	103.5	166.0000N	192.8	A
TACTICAL	4	169.1250N	103.5	169.1250N	103.5	A
COMMAND	11	169.7500N	123.0	167.1000N	123.0	A
AIR TO GROUND	13	171.1125N		171.1125N		A
9. Prepared By (Resource Unit Leader)			Approved By (Planning Section Chief)		Date	Time
JILL JOHNSON			MARGE HUTCHINSON		10/09/2020	2000

AIR OPERATIONS SUMMARY 220		Prepared By: Tim Lyda	Prepared: 10/09/2020		Prepared Time: 1600		
1. INCIDENT NAME: ARCHIE CREEK		2. OPERATIONAL PERIOD 10/10/2020	START TIME: 0800	END TIME: 2000	SUNRISE: 0721	SUNSET: 1836	Pumpkin: 1906

3. REMARKS (Safety Notes, Hazards, Air Operations Special Equipment, etc.). <p style="text-align: center;"><u>AVIATION SAFETY IS A TEAM EFFORT</u></p> <p style="text-align: center;"><i>DUE TO INCLEMENT WEATHER 2WM WILL BE ON A 1 HOUR DELAY.</i></p>		4. READY ALERT AIRCRAFT: <p style="text-align: center;">IA: TBD</p> <p style="text-align: center;">3JR - Short Haul Capable Staged at Sunriver, OR</p> <p style="text-align: center;"><i>Order through Communications/Dispatch See Medical Plan in the IAP</i></p> <p style="text-align: center;">Life Flight @ 911</p>	5. TFR: 0/2507 (A-43) Freq: 126.4500 Exp: 10/18/20 0400 UTC Polygon (20NM x 42NM) 8,000' MSL Daylight Hrs
--	--	--	---

6. PERSONNEL	NAME	PHONE #	7. FREQUENCIES	Freq	Tone	8A. FIXED-WING Ordering
ASGS	Tim Lyda	541-761-2676	A/A Primary (A-9)	126.4500		AIRTANKERS/LEAD PLANES/SEATS: ATGS order through Dispatch
			A/A Secondary (A-10)	127.3500		8B. Aerial Supervision / Personnel / Location
2WM	Jordan Olsen	704-418-6646	A/G Primary (A-8)	172.6750		AIR ATTACK Platforms: Order through Dispatch, OR-RIC
			A/G Secondary (A-7)	172.4625		
USFS UAO	Jim Dotson	307-413-2024	ODF IA A/A(Primary)	134.7250		
DFPA UAO	Rory Collins	541-580-7158	ODF IA A/G (White Net Primary)	151.310	156.7	Air Guard: 168.6250 (110.9 Tx Tone)
DFPA Dispatch	541-672-6507	Ext 121 or 138	OR-RIC Dispatch	R170.025		S33 (Madras) Unicom: 122.8
OR-RIC		541-957-3253		T166.300	107.2	RDM (Redmond) Unicom: 122.95
			DFPA Dispatch	R151.1600	146.2	16S (Myrtle Creek): 122.7
				T159.4275	146.2	RBG (Roseburg) Unicom: 122.8
			Helibase and Deck	163.100		LMT (Klamath Falls) Unicom: 122.95
			ODF-IA A/G (Orange Net - Secondary)	151.4375	156.7	Myrtle Creek Helibase N42 59.84 W123 18.92 619' Elevation

9. HELICOPTERS

FAA N#	TY	MAKE/ MODEL	BASE	START	AVAIL	REMARKS	FAA N#	TY	MAKE/ MODEL	BASE	START	AVAIL	REMARKS
							2WM	1	KMax	Strader	0800	0830	Jordan Olsen 704-418-6646

INCIDENT RADIO COMMUNICATIONS PLAN (ICS 205)

Controlled Unclassified Information//Basic

1. Incident Name:	2. Date/Time Prepared:	3. Operational Period: DAY	
ARCHIE CREEK	Date: 10/09/2020 Time: 2000	Date/Time From: 10/10/2020 0700 SAT	Date/Time To: 10/10/2020 1900 SAT

4. Basic Radio Channel Use:

Zone Group	Ch #	Function	Channel Name/Trunked Radio System Talkgroup	Assignment	RX Freq	RX Tone/NAC	TX Freq	TX Tone/NAC	Mode (A,D, or M)	Remarks
AC	1	TACTICAL	TAC 1	DIV A / R / S	168.0500N	123.0	168.0500N	123.0	A	TAC 1
AC	2	TACTICAL	TAC 2	DIV F / H / K	168.2000N	123.0	168.2000N	123.0	A	TAC 2
AC	3	TACTICAL	TAC 3	WRIGHT CREEK	168.6000N	123.0	168.6000N	123.0	A	TAC 3
AC	4	TACTICAL	TAC 4		166.7250N	123.0	166.7250N	123.0	A	RESERVED
AC	5	TACTICAL	TAC 5	DIV N/Q	166.7750N	123.0	166.7750N	123.0	A	TAC 5
AC	6	TACTICAL	RED NET	DFPA DIV W/T/D/E	151.3400N	156.7	151.3400N	156.7	A	DFPA RED NET
AC	7	COMMAND	CMD 7	DIV A, WRIGHT CRK	171.8250N	123.0	168.4250N	123.0	A	SCOTT MOUNTAIN
AC	8	COMMAND	CMD 8	DIV H/K, N/Q	173.5000N	123.0	168.5625N	123.0	A	TWIN LAKES
AC	9	COMMAND	CMD 9	DIV N/Q, R/S, W/T/D/E	170.4500N	123.0	168.1000N	123.0	A	RED BUTTE
AC	10	COMMAND	CMD 10	DIV F, H/K, WRIGHT CREEK	169.5375N	123.0	164.7125N	123.0	A	CHILCOOT MOUNTAIN
AC	11	COMMAND	DFPA RPT	DIV W/T/D/E	151.1600N	146.2	159.4725N	146.2	A	DFPA SIMULCAST REPEATER
AC	12	COMMAND	ROD LANE		170.0250N		166.3000N	107.2	A	BLM LANE MTN REPEATER
AC	13	COMMAND	CHILCOOT	DIV F, H/K	170.5500N	103.5	164.8000N	192.8	A	FS CHILCOOT REPEATER
AC	14	AIR TO GROUND	A/G PRI	ALL	172.6750N		172.6750N		A	AIR TO GROUND PRIMARY
AC	15	AIR TO GROUND	A/G SEC	ALL	172.4625N		172.4625N		A	AIR TO GROUND SECONDARY
AC	16	AIR GUARD	AIRGUARD	ALL	168.6250N		168.6250N	110.9	A	AIRGUARD

5. Special Instructions:

6. Prepared By (Communications Unit Leader)	Name: MISSY PARKER	Signature: <i>Missy Parker</i>
ICS 205	IAP Page	Date/Time: 10/09/2020 2000

INCIDENT RADIO COMMUNICATIONS PLAN (ICS 205)

Controlled Unclassified Information//Basic

1. Incident Name:	2. Date/Time Prepared:	3. Operational Period: DAY	
THIELSEN	Date: 10/09/2020 Time: 2000	Date/Time From: 10/10/2020 0700 SAT	Date/Time To: 10/10/2020 1900 SAT

4. Basic Radio Channel Use:

Zone Group	Ch #	Function	Channel Name/Trunked Radio System Talkgroup	Assignment	RX Freq	RX Tone/NAC	TX Freq	TX Tone/NAC	Mode (A,D, or M)	Remarks
	1	COMMAND	CIMMAMON	UMPQUA NF CINNAMON BUTTE	171.4250N	103.5	166.0000N	192.8	A	DIV A/M, P/W, NORTH DIAMOND
	2	COMMAND	PIG IRON	UMPQUA NF PIG IRON RPTR	171.4250N	103.5	166.0000N	179.9	A	DIV P/W
	3	COMMAND	E DOEHD	UMPQUA NF DOE HEAD RPTR	171.4250N	103.5	166.0000N	186.2	A	
	4	TACTICAL	NURD PROJ	NURD/RRF PROJECT	169.1250N	103.5	169.1250N	103.5	A	NORTH DIAMOND
	5	TACTICAL	DLRD PROJ	DIAMOND LAKE RD PROJECT	168.2625N	103.5	168.2625N	103.5	A	DIV A/M/P/W
	6	TACTICAL	CG/T PRJ	COTTAGE GROVE/TILLER	167.3750N	103.5	167.3750N	103.5	A	
	7	COMMAND	WNF WALK	WINEMA NF WALKER RPTR	170.5250N	103.5	162.7500N	141.3	A	
	8	COMMAND	RRFHersh	ROUGE RIVER NF HERSHBERGER	169.5750N	67.0	164.8750N	67.0	A	
	9	COMMAND	CHILCOOT	FA CHILCOOT REPEATER	170.5500N	103.5	164.8000N	192.8	A	
	10	COMMAND	INTEROP	DOUGLAS CO. INTEROP	152.6600N	151.4	157.8600N	110.9	A	
	11	COMMAND	CMD 11	THIELSEN BASE CAMP	169.7500N	123.0	167.1000N	123.0	A	ALL DIVISIONS
	12	COMMAND	CRATR LK	CRATER LAKE NP WATCHMEN	170.1000N	110.9	166.2375N	110.9	A	
	13	AIR TO GROUND	A/G-PRI	NIFC AIR TO GROUND	171.1125N		171.1125N		A	A/G PRIMARY- ALL DIVISIONS
	14	AIR TO GROUND	A/G-SEC	NIFC AIR TO GROUND	173.8625N		173.8625N		A	A/G SECONARY-ALL DIVISIONS
	15	TACTICAL	VMED 28	INCIDENT MEDVAC	153.3400N		153.3400N		A	** MEDIVAC **
	16	AIR GUARD	AIR GUARD	AIR GUARD	168.6250N		168.6250N	110.9	A	ALL DIVISIONS

5. Special Instructions:

6. Prepared By (Communications Unit Leader)	Name: MISSY PARKER	Signature: <i>Missy Parker</i>
ICS 205	IAP Page	Date/Time: 10/09/2020 2000

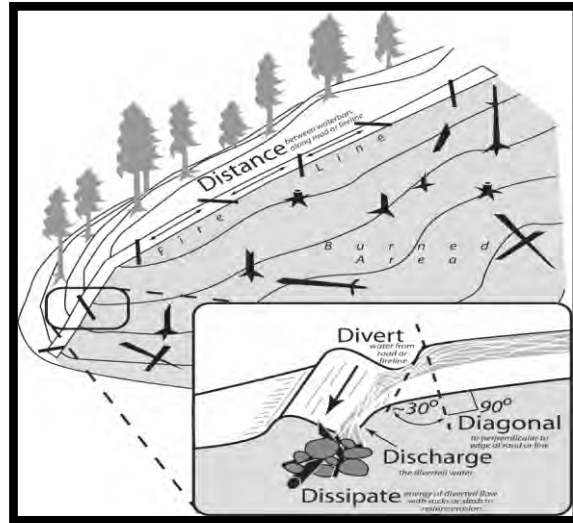
Top 10 Natural Resources Take-homes from Archie Creek

These are the top 10 messaging points and/ or tidbits of 'gee-whiz' info that we have shared that will prove useful no matter what incident you work on. Thank you for your most excellent work here and safe travels as you time out and return to your home units! Note: these are not listed in order of importance.

- 1) Constructing EFFECTIVE waterbars on firelines includes attention following the 5-D's; Distance, Divert, Diagonal, Discharge, and Dissipate. The purpose of waterbars is to slow water down as it travels downhill. When constructed correctly, waterbars help reduce excessive erosion and mitigate sediment transfer to streams and rivers.

Fireline Slope	Maximum Spacing
1-6%	300 ft.
7-9%	200 ft.
10-14%	150 ft.
15-20%	90 ft.
21-40%	50 ft.
41-60+%	25 ft.

Figure 1. The Five-D System for Effective Fireline Waterbars. Furniss (undated) PNW



- 2) Raptors have 3 eyelids.
- 3) Control efforts and economic losses stemming from noxious weeds are extremely costly – upwards of \$125 million, in Oregon alone. The best thing we can do is to prevent the spread; use the weed wash whenever possible, check your clothing for seeds, and ensure no plant parts/seeds make the journey home with you.
- 4) **In areas where there are cultural sites, please do not move the items from where you discovered them. Simply collect point location, and pass the data to a READ/F on your division.**
- 5) As pumps are set up for mop-up, please keep fuel as far from the streams as possible, and make sure each pump has a containment kit. Set pumps, fuel, jerry cans, etc. on level ground and ensure absorbent pads are changed when they become 50% saturated.
- 6) Avoid drafting from smaller streams – if you need help finding water sources, please contact a Resource Advisor, as on most incidents, at least a few of them are local, have incredible knowledge of the area, and can assist with minimal response time.
- 7) Splash erosion occurs when raindrops (which can travel at up to 20 mph) strike soil without any plant cover or woody debris to intercept the drop's kinetic energy, soil particles can splash up to five feet horizontally and two feet in the air.
- 8) You'd be surprised how long trash persists; thanks for your efforts on this incident!
- 9) Noxious weed seeds can remain viable for 1 – 80 years, depending on species.

- 10) The Chinook is the biggest of all of the Pacific salmon, growing as long as 53 inches and weighing as much as 126 pounds. This fish holds a significant stature culturally, economically, and recreationally.



Fun fact for the day; one-half inch of rain over the 130K acres of Archie creek equals approximately 1.7 BILLION gallons of water.

Archie Creek and Thielsen Danger Tree Felling Specifications

For the safety of firefighters ingress and egress to patrol and manage suppression response work on the Archie Creek Fire dead and dying trees along the identified priority roads need to be felled and removed (in some cases). The following is a draft prescription of the danger tree mitigation treatment:

- All dead trees along the prioritized roads that are at risk to hit the road need to be felled consistent with the [Region 6 Danger Tree Identification document](#). Additionally, any trees with combinations of scorched and live crowns need to be evaluated by a person certified in danger tree identification for potential felling utilizing the criteria established in [Smith and Cluck \(2011\)](#).
- Do not cut live green trees with intact crowns.
- For tree removal, any danger tree that is felled and hits the road should be limbed and decked. Most limbs that break off within 40-75 ft of the edge of the road prism should be piled or chipped on uphill slopes adjacent to the roads.
- On steep slopes above the road, fell all danger trees within 1 ½ tree lengths. On steep slopes, where professional judgement identifies a likelihood that a tree will slide onto the road, consider removing the tree and all limbs within 40-75 ft of the road. If the tree cannot be safely pulled to the road, consider contour falling where appropriate and safe.
- For slash created by fallen trees, pile along roadsides in consultation with READs.
- Only yard trees to the road outside of riparian areas or areas where removal could cause slope erosion concerns.
- For Incense and Western Red Cedar with green needles, evaluate root scorch, if 50% or greater, consider felling for safety in consultation with READs.
- For slopes below the road, only fall dead trees that have the potential to hit the road. Only remove such trees if they hit the road and can be removed without causing resource damage.
- If for safety reasons, an area cannot be treated with danger tree felling operations, please map the area, and share it with the lead Resource Advisor for mapping purposes.

Slash Specifications

- Remove slash created by danger tree felling within 40' of edge of the road.
- Where possible, prefer to haul and chip slash rather than piling.
- Where not possible to haul, chipping into stands is preferred before piling. Don't chip to a depth greater than one foot. Where possible, shoot chips to the downhill side of the road.
- Where not possible, pile slash alongside roads in coordination with READs to avoid sensitive areas and culverts.
- When building slash piles, size is not a concern, but ensure they are at a sufficient distance from live trees to avoid killing the trees when the pile is burned.
- Cover all piles with plastic sufficiently to allow for the interior of pile to remain dry over winter.

Weed Wash!!



The weed wash stations are still up and running! The objective, is to complete suppression repair and minimize damage to the natural resources. Thank you for your continued vigilance in helping us achieve that objective!

There is a weed wash located at the Archie Creek ICP and at the Thielsen Spike camp.

- The Archie Weed Wash has MOVED.

Directions: Take 138 West into Glide, make a right (North) just West of the Glide Community Center (about 0.8 miles from Archie ICP). You'll see signs at the entrance. This is also the new Staging Area.

PLEASE wash your vehicles during the following situations:

- Prior to demob....DO NOT take our weeds home with you!
- Whenever logistically possible, wash equipment/vehicles prior to moving from the BLM/Private checkerboard to Forest Service- administered lands.

****If you are just arriving to the Archie Creek or Thielsen Fire, take all vehicles through the weed wash before entering the fire areas.****

To review, please wash your vehicle / equipment upon:

1. Initial mobilization into camp;
2. Final demobilization;
3. Moving from BLM to FS;
4. As often as possible!

*Federal agencies and private industry spend thousands of dollars a year in the fight against noxious weeds as they spread from the valleys (or other infested areas) into un-infested Public Lands and plantations. Prevention is by far the most effective proactive weapon we have; it saves taxpayer dollars, and all it takes is a little extra time.

DEMOB INSTRUCTIONS

In the COVID-19 environment we are limiting direct contact where possible including within the demob process.

As such, much of the process will be completed via cellphone. Please wear a face covering during any in person interaction.

Demob steps for all resources (must be done in order):

1. Any resources that were off pavement must go through **weed wash**. Location @ Thielsen Fire = Diamond Lake Camp. Location @ Archie Creek Fire = ICP.
2. Check out with **Ground Support** at either camp.
3. Turn in any radios to the **Communications Unit** and checked out supplies to the **Supply Unit** at either camp.
4. Call **Demob Unit** @ 541-887-0815
5. Call **Finance** @ 509-949-3210 or 360-601-8820
6. Scan this QR code and review the information on COVID.



If you follow this process you will be made available in the ordering system faster for your next assignment.

Any questions about the process please contact the Demob Unit at 541-887-0815.

Thank you and safe travels!

Tentative Demob List
Archie Creek Fire - October 10, 2020

EQUIPMENT

E-239	0730	(ENG6)	AMERICAN FIREFIGHTER
E-251	0845	(STK)	ARCHER MOUNTAIN
E-311	0915	(EXCA)	BOB MURRAY LOGGING
E-312	0930	(EXCA)	WARREN PARTRIDGE
E-109	0945	(WTS2)	IRELAND INC 81
E-9	1000	(ENG6)	FIRST STRIKE

OVERHEAD

O-550	0700	(SOFR)	GILLASPY, RICHARD JAMES
O-331	0715	(EMTF)	EBLIN, NICHOLAS
O-435	1400	(IMET)	BYRD, DANIEL HOWARD
O-494	1415	(PIOF)	MYERS, ERIN
O-488	1800	(SOFR)	HYATT, CHAD EARLE

Sunday, October 11, 2020

EQUIPMENT

E-50		(STK)	TRANSPORTATION - STAKESIDE
E-313		(EXCA)	OWENS FREIGHT LINES, INC
E-314		(EXCA)	TABLE MOUNTAIN FORESTRY
E-315		(EXCA)	TABLE ROCK FORESTRY
E-317		(EXCA)	MARK JONES TRUCKING
E-327		(CHIP)	A&H FORESTRY, LLC
E-329		(LDFR)	MILLER TIMBER SERVICES
E-336		(EXCA)	JUSTIN PITTS TRUCKING, INC.
E-341		(SKD1)	MARK JONES TRUCKING
E-309		(PU)	ENTERPRISE TRUCK RENTAL

OVERHEAD

O-8165		(FAL1)	CHAPMAN, LEVI
O-448		(SOF2)	FLOYD JR, TROY E
O-464		(TFLD)	HILFERS, JESSICA
O-486		(REAF)	SJODEN, DANE
O-140		(READ)	WOODCOCK, CHRIS
O-510		(SEC2)	CLEMENTE-ORTIZ, YUNIELIS
O-449		(SEC1)	SCOGGINS, EMILY BROOKE
O-414		(SEC1)	OAKS, ERIC O

Tentative Demob List

Thielsen Fire - October 10, 2020

CREWS

C-11 0900 (HC2) MOSQUEDA REFORESTATION

EQUIPMENT

E-52 0745 (ENG6) CONTRACT WATER WAGON
 E-29 0815 (EXCA) DENNY POTTER LOGGING
 E-8 0830 (DOZ3) BOB MURRAY LOGGING
 E-142 1000 (TCTL) FOREST SERVICE PUP TRAILER
 E-166 1015 (GRD) COMPACTOR, PRO RENTALS &

OVERHEAD

O-148 0800 (HMGB) GORDON, JARRED

Sunday, October 11, 2020

EQUIPMENT

E-68 (SHW) ROCKWELL AMERICAN SERVICES,
 E-109 (SKD1) MARK JONES TRUCKING
 E-110 (PU) INBOUND C18
 E-112 (PU) 4Q TIMBER
 E-133 (STK) DIAMOND FIRE /
 E-134 (PU) DIAMOND FIRE /

OVERHEAD

O-6 (READ) HANCOCK, JEDIDIAH
 O-19 (DIVS) SMITH, BRIAN

COVID Mitigated Check In Process....


*With the many changes due to COVID, efforts are being made to keep our resources (you!) safe by social distancing. Although our process has changed, we are still here for you... The Team is attempting to make the check-in process as easy as possible, however the need to rely on technology can be a challenge at times. If at any time you run into issues or have questions, please call the assisted check-in desk at **425-324-1367** between **0600 - 2100**.*

The Process:

Step 1: Ground Support Inspection

- **Non-Agency Resources Only** (includes contract crews, equipment and overhead) need to report to Ground Support at Archie Creek ICP for inspection prior to engaging in the incident.

Step 2: Fill out the Virtual Check-In Form (Use the option below that works best for you)

- Option 1: Use your smart phone or tablet to Scan the QR code. In most cases, your phone camera will successfully scan the code and take you to the virtual form. 
- Option 2: Open your internet browser (from your phone, tablet or computer) and type the following in the address bar <https://bit.ly/2SHj9bD>
- Option 3: For on-site check in, please call 425-324-1367 – an iPad can be provided for you to complete the Check-In process.
- Option 4: If you can't complete any of the above methods of accessing the form or for any check-in issues, please call 425-324-1367.

Step 3: Provide Supplemental Check-In Information (either email or text documents)

- Please provide the following documents:
 - **Crews** – crew manifest with vehicle information, red cards
 - **Equipment** – crew manifest (if information is not provided in check-in form), red/blue card(s)
 - **Overhead** –red card
- Methods to provide documents:
 - Email documents to 2020.archiecreek.resources@firenet.gov
 - Text documents to 425-324-1367

Step 4: Determine Your Reporting Location

- **Fireline resources** – pick up an IAP from Check-in, then call Matt in Operations at 509-630-8033.
- **Other resources** - if you're unsure where to report, call Check-In for assistance at 425-324-1367.



Firefighter Photography, Videography, and Social Media Guidance

Good Morning Everyone:

Forest Service and BLM wildland firefighters who shoot photos and videos of work related activities and post them on their personal social media accounts must be mindful that images and messages reflect not only on their own professionalism, but also on the professionalism of their unit, the agency, and the interagency wildland fire community.

It is the responsibility of all agency wildland firefighters to ensure their conduct is appropriate both on the fireline and online.

Check it before you wreck it....before you post a photo or video, take a minute to think about the content. Does the photo or video involve firefighters without proper PPE? Does the photo or video portray something that could embarrass you or your crew?

Think about the content....is it inappropriate or would it have a negative effect on firefighters or the firefighting community? Once a video goes viral there is no way of getting back. Photos or videos taken in unsafe, unprofessional, or embarrassing circumstances reflect poorly on the entire fire and aviation community.

Never lose your situational awareness. A firefighter who is concentrating on a camera cannot be looking up, looking down and looking all around.

For your information (FYI) - following are the links to the FS and BLM policies:

<https://www.ocio.usda.gov/document/departmental-regulation-1495-001>

<http://www.ocio.usda.gov/document/departmental-regulation-4070-735-001>

<https://www.doi.gov/notices/Social-Media-Policy>

If you ever have questions, feel free to contact your local public affairs specialist or the National Fire Center's Office of External Affairs:

208-387-5050



Susie Manezes, Human Resource Specialist PNW Team 12 – Contact: 602-571-9327
Located at the Incident Command Post (ICP) Glide, OR. smanezes@blm.gov

Diversity, Teamwork, Appropriate Behavior...Mutual Respect...You Make the Difference!



ARCHIE CREEK / THIELSEN CONTACT LIST

FINANCE

2020.archiecreek.finance@firenet.gov

DMOB

2020.archiecreek.DMOB@firenet.gov

SITUATION UNIT

2020.archiecreek.situation@firenet.gov

PLANS

2020.archiecreek.plans@firenet.gov

LOGISTICS

All orders (ICS-213) need to be submitted electronically to:

2020.archiecreek.ordering@firenet.gov

INFORMATION

2020.archiecreek@firenet.gov

NOTE: These email addresses are used for both Thielsen and Archie Creek Fires.

Archie Creek Fire & Thielsen Fire Training Message

**LAST DAY TO START NEW TRAINING ASSIGNMENTS
SUNDAY 10/11/2020!!!**



TNSP will be on R&R Oct. 8 & 9

Starting Oct. 10th, TNSP will be available 6-9am by appointment only and 3-8pm daily

Erika L. Davis ~ (850) 841-0038 ~ Erika.Davis@USDA.GOV

TRAINING REGISTRATION



<https://tinyurl.com/yxs7x4bm>

- Initiate registration via QR code
- Send Red Card and PTB cover
- Receive confirmation email w/forms

TRAINING CLOSE-OUT



<https://tinyurl.com/y54ufg3v>

- Initiate Close-out via QR code
- Send completed Performance Evaluation(s), Evaluation Record(s), Final Evaluators Verification (if necessary)

LOGISTICS INFORMATION

October 10, 2020



Archie Creek Kitchen
Breakfast: 0600-0830
Dinner: 1800-2100
NEW HOURS!!

Thielsen Spike Kitchen
Breakfast: 0600-0900
Dinner: 1600-2200



Archie Creek Showers
Opens: 0500
Closed: 1200-1400
Closed: 2200

Thielsen Spike
Opens: 0600
Closed: 1200-1600
Closed: 2200

For COVID mitigation, please reduce the numbers of individuals coming to the kitchen window. Send representatives to collect meals for groups.

FINANCE

Communications for Finance should be sent to

2020.Thielsen.finance@firenet.gov

2020.Archiecreek.finance@firenet.gov

We would like to send a shout out to all the folks who have turned in the CTRs and Shift tickets – WE appreciate it!!!!

We would also like to thank all the folks who are volunteering on these fires – all you folks that have not turned in any CTRs or Shift tickets.

If you don't want to continue volunteering please use the QR codes below to submit your time.



Archie Creek

FINANCE SECTION OFFICE ADDRESS:

BLM Cache
2300 NW Aviation Drive
Roseburg, OR 97470



Thielsen

Reminder for Forest Service Resources:

When you enter your time in Paycheck this week use the Fiscal year 20 shorthand code for the fire you are working on, and then do a corrected T&A next payperiod to the Fiscal year 21 shorthand code once it is in the system.

Contact Information:

Equipment Time: Christina Goebel – 509-670-5889

Personnel Time: Carol Long – 509-433-1115

Procurement: Mark Bohnet – 509-531-7418

Compensation & Claims: Barb Haxby – 360-601-8820

Finance Section Chief: Cheri Fuller – 509-949-3210

Deputy Finance Section Chief: Barb Haxby – 360-601-8820


ICPI: Rob Hechinger – 509-675-5821

Note

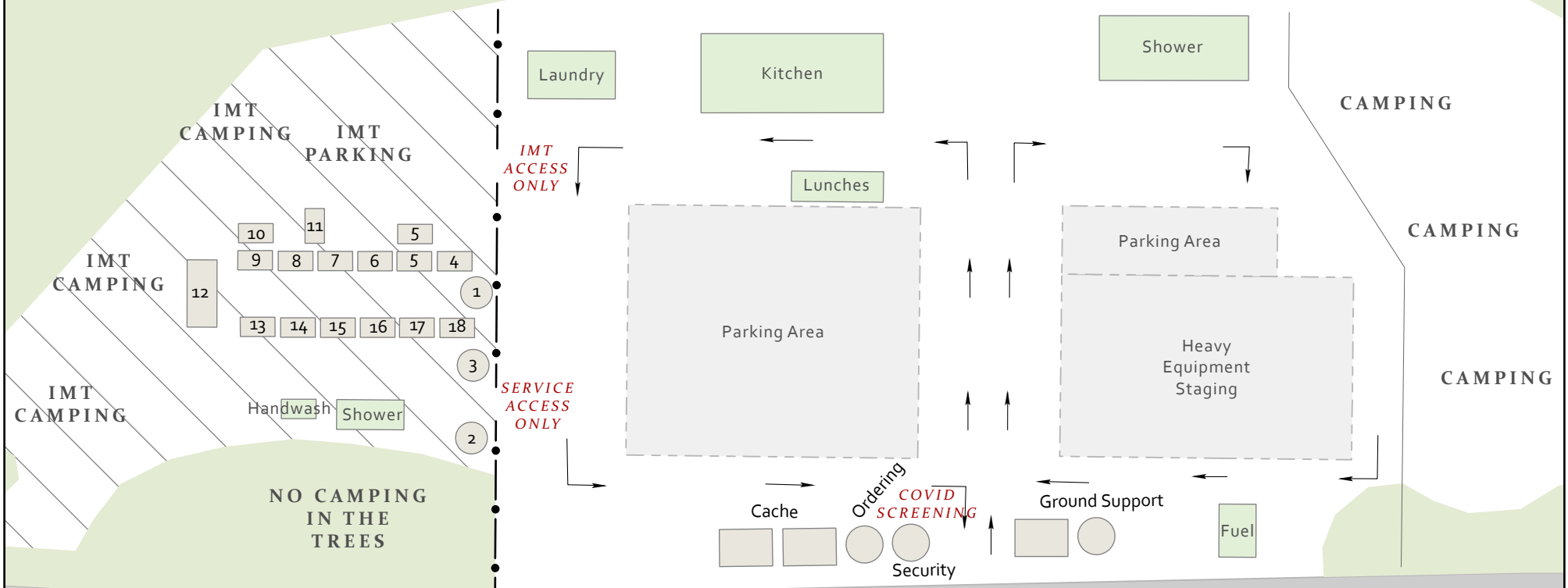
To comply with COVID-19 mitigations, only personnel assigned and working within the ICP are allowed within the IMT Area.

Access to Check-in / Demob and the Medical Unit are in place.

IMT Personnel should keep contact with the Base Camp Area to a minimum.

- | | | |
|-----------------------|-------------------|--|
| 1 - Check-in / Demob | 8- Plans | 15- Documentation |
| 2- Cooperator Meeting | 9- Situation | 16- LOGS |
| 3- READ | 10- GS | 17- Finance |
| 4- Medical Unit | 11- Copy Service | 18- Public Information |
| 5- Communications | 12- Large Meeting |  IMT Area |
| 6- Small Mtg | 13- IC | |
| 7- Safety / OPS | 14- HR | |

**Archie Creek
OR-UPF-000436
Strader Ranch ICP
10/10/2020**



<--- Weed Wash (Hwy 138 & Bar L Road)

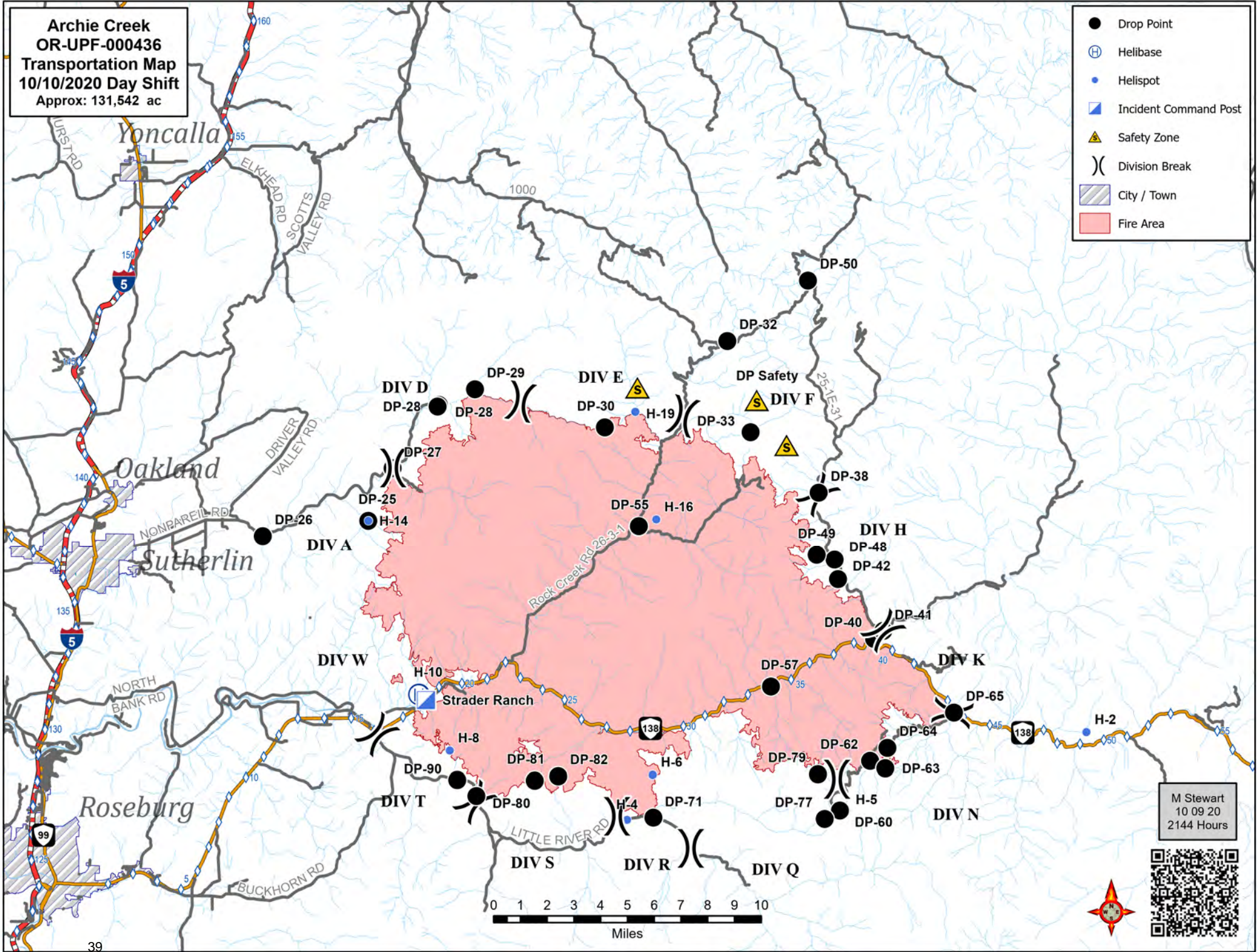
S. Bushnell
10 09 20
2035 Hours

North Umpqua River



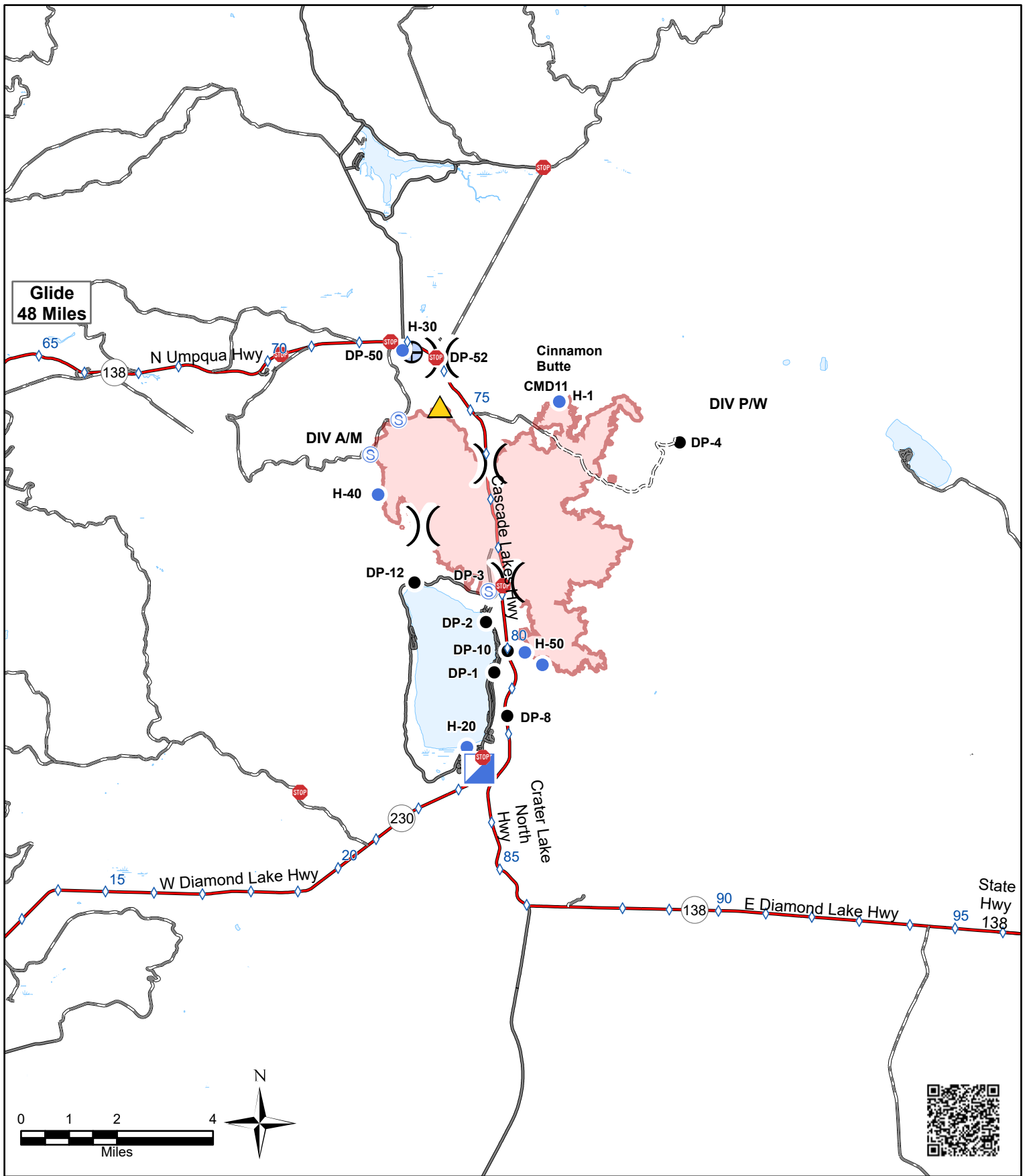
**Archie Creek
OR-UPF-000436
Transportation Map
10/10/2020 Day Shift
Approx: 131,542 ac**


- Drop Point
- Ⓜ Helibase
- Helispot
- ▣ Incident Command Post
- ▲ Safety Zone
-) Division Break
- ▨ City / Town
- Fire Area



M Stewart
10 09 20
2144 Hours





-  Checkpoint
-  Drop Point
-  Helispot
-  Incident Command Post
-  Safety Zone
-  Staging Area
-  Water Development or Draft Site
-  Wildfire Daily Fire Perimeter
-  Division Break
-  Mileposts

Thielsen
OR-UPF-000441
IAP Transportation Map
10/10/2020 Day Shift

Created by: B Kirk
Date Created: 10/9/2020 10:06 PM

Incident Maps

Maps are not included in the IAP document due to size and page count. For detailed Operations, Transportation and other maps, scan the QR code (or click the link below it) for your fire:



[Archie Creek](#) (click to open)



[Thielsen](#) (click to open)

Send Map Updates

Send map updates by email to the Situation Unit email address for your fire:

Archie Creek: 2020.archiecreek.situation@firenet.gov

Thielsen: 2020.thielsen.situation@firenet.gov

Alternately, text/call the Situation Unit at 360-584-3373. Make sure to include your name, position and explanation of the update you send.

How to correctly send data from Avenza:

1. Open the map in Avenza.
2. Click the pin with three lines near the lower-right corner.
3. *iPhone*: In the lower right, click the square with up arrow. From the pop-up menu, choose Export to Others.
Android: In the lower right, click the circle with three lines. Click the pop-up circle with up arrow.
4. Set these options:
 - a. Filename – leave alone
 - b. Export Format – choose SHP, GPX or KML
 - c. Data – all features
 - d. Image size – no image
5. Click the Export button in the upper-right corner.
6. When the export is ready, choose your Mail application.
7. Send the email to the address for your fire.
8. Your email needs to include your name and position
9. Your email needs to include an explanation of the data you are sending.

REQUIRED BY ALL PERSONNEL: COVID-19 DAILY CHECKLIST

Supervisors are required to go over this list each morning with assigned resources. Please make a notation in the remarks section on your daily Crew Time Report documenting your daily health assessment check.

Self-Awareness / Screening

- Notify supervisor if you or others experience:
 - Fever or chills
 - Cough
 - Shortness of breath or difficulty breathing
 - Fatigue
 - Muscle or body aches
 - Have you had close contact within the last 14-days with someone who is currently sick with confirmed COVID-19? (Note: Close contact is defined as within 6 feet for more than 15 minutes per CDC Guidelines)
 - Headache
 - New loss of taste or smell
 - Sore throat
 - Congestion or runny nose
 - Nausea or vomiting
 - Diarrhea
- Review and follow crew and division plans to isolate, triage, and transport symptomatic personnel: Contact line EMT or COVID Module personnel for next steps.
 - Masks must be worn at all times in base camp, spike camp and ICP.
 - Modules (e.g. crews, engines) should send representatives to pick up meals for the entire group: 1 person for engine crews, 3-4 people for 20 person crews.
 - Join morning briefing via phone (number provided in IAP)
 - Observe 6-foot social distancing during briefings and while standing in line for meals, and any other time you are near people outside of your module.
 - Limit contact between firefighters and the public as much as possible, use crew representatives to pick up supplies, fuel, etc.

**WEAR YOUR MASK
WASH YOUR HANDS
WATCH YOUR DISTANCE**

Archie Creek Fire

ICP/Base Camp

MEDICAL EMERGENCY PROCEDURE

**YELL for HELP
STAY WITH PATIENT**

**SEND SOMEONE TO COMMUNICATIONS/OR
CALL:**

COMMUNICATIONS TRAILER IS AT THE BASE CAMP,
LOCATED IN GLIDE OREGON (BEHIND THE ROWS
OF YURTS). THE INCIDENT MEDICAL TENT IS
LOCATED AT THE EAST END OF THE YURT ROWS,
NEAR CHECK-IN.

**COMMUNICATIONS WILL START
APPROPRIATE MEDICAL RESPONSE**

DAY AND NIGHT 24 HR

Communications:
Command or Cell: 206-450-6582

Thielsen Fire
Spike Camp
In Camp Safety

MEDICAL EMERGENCY PROCEDURE

YELL for HELP
STAY WITH PATIENT

CALL CELL NUMBER LISTED BELOW

**LEE VENNING WILL START APPROPRIATE
MEDICAL RESPONSE**

DAY AND NIGHT 24 HR

Communications:
Lee Venning Cell: 417-459-5759

EMERGENCY PLAN

INCIDENT WITHIN AN INCIDENT

ON SCENE SUPERVISOR

In the event of an accident or medical incident of any size, your primary responsibility is to ENSURE that the victim(s) receive prompt and effective Triage, Treatment and Transportation.

- Conduct size-up of the incident (nature of accident, number type of resources involved, latitude and longitude location); notify incident communications center and supervisor, request assistance as needed.
- Order and coordinate medical and support response to the accident.
- Evaluate special needs (law enforcement, haz mat, etc.).
- Clear the command frequency if medical emergency; coordinate with incident communications and air attack for air medical transportation needs
- Preserve and photograph the scene for accident investigation.
- Remain aware of surroundings and the status of the main incident (delegate personnel to monitor the main fire) to ensure safety of medical treatment personnel.
- Until relieved, supervise and manage all personnel involved at the incident scene.
- **ENSURE THE MEDICAL INCIDENT REPORT IN THE INCIDENT ACTION PLAN IS BEING USED AND FOLLOWED.**

MEDICAL PLAN (ICS 206 WF)

1. Incident/Project Name		2. Operational Period				
Archie Creek		Date/Time 10/10/2020 0700-1900				
3. Ambulance Services						
Name	Complete Address	Phone		Advanced Life Support (ALS) Yes No		
Douglas County Fire District #2	4200 Carnes Rd Roseburg, OR 97471	Dispatch 541-440-4471 or 911		x		
Glide Rural Fire Protection	18910 N. Umpqua Hwy Glide, OR 97443	Dispatch 541-440-4471 or 911			x	
4. Air Ambulance Services						
Name	Phone	Type of Aircraft & Capability				
Reach Helicopter Service	800-338-4045	EC-135 Night Capability (Roseburg)				
Life Flight / Airlink	800-232-0911	EC-135 Night Capability				
Forest Service Short Haul	Air Ops	Located in Sunriver, OR				
5. Hospitals						
Name Complete Address	GPS Datum – WGS 84 Coordinate Standard Degrees Decimal Minutes DD° MM.MMM' N - Lat DD° MM.MMM' W - Long	Travel Time From ICP Air Gnd		Phone	Helipad Yes No	Level of Care Facility
Legacy Emmanuel Medical 3001 N Gantenbein Ave. Portland, OR 97202	Lat: 45° 32.688 N	1 Hr 30 Min	3 Hr 10 Min	(888) 598-4232	X	Level 1 Trauma & Burn Center
	Long: 122° 40.293 W					
	VHF: 155.340					
Mercy Medical 2700 NW Stewart Pkwy. Roseburg, OR 97471	Lat: 43° 14.57 N	20 Min	40 Min	541-677-4333	X	Level 3 Trauma
	Long: 123° 21.99 W					
	VHF: 155.340					
Sacred Heart Medical Center 3333 Riverbend Dr. Springfield, OR 97477	Lat: 44° 04.87 N	35 Min	1 Hr 10 Min	541-222-6929	X	Level 2 Trauma
	Long: 123° 01.58 W					
	VHF: 155.340					
6. Division Branch Group						
	Capability	Personnel				
A/R/S	Medic 3 (E-175), BTE REMS (0-430)					
F/H/K	Medic 4, (E-286), Albuquerque REMS (0-479)					
N/Q	Medic 1 (E-29), Medic 5 (E-291), Douglas County REMS (0-382)					
Wright Group	EMPF Bennet (0-496)					
7. Prepared By (Medical Unit Leader)						
8. Date/Time		9. Reviewed By (Safety Officer)		10. Date/Time		
Eamonn Ryan, Bonnie Gibbons <i>Eamonn Ryan</i>		Troy Corn <i>Troy Corn</i>				

MEDICAL PLAN (ICS 206 WF)

1. Incident/Project Name				2. Operational Period							
Thielsen				Date/Time 10/10/2020 0700-1900							
3. Ambulance Services											
Name		Complete Address		Phone		Advanced Life Support (ALS) Yes No					
Chemult Fire Protection		109800 US 97 Chemult, OR 97731		Dispatch 541-290-2172 or 911		x					
Crescent Fire and Ambulance		136727 Main Street Crescent, OR 97733		Dispatch 541-433-2466 or 911		x					
4. Air Ambulance Services											
Name		Phone		Type of Aircraft & Capability							
Mercy Flight		800-903-9000		Bell 407, Night Capability							
Life Flight / Airlink		800-232-0911		EC-135 Night Capability							
Forest Service Short Haul		Air Ops		Located in Sunriver, OR							
5. Hospitals											
Name Complete Address		GPS Datum – WGS 84 Coordinate Standard Degrees Decimal Minutes DD° MM.MMM' N - Lat DD° MM.MMM' W - Long		Travel Time From ICP		Phone		Helipad Yes No		Level of Care Facility	
		Lat:	Long:	VHF:	Air			Gnd	Yes		
Legacy Emmanuel Medical 3001 N Gantenbein Ave. Portland, OR 97202		45° 32.688 N	122° 40.293 W	155.340	1 Hr 30 Min	3 Hr 10 Min	(888) 598-4232		X		Level 1 Trauma Burn Center
		44° 3.4904 N	121° 18.9185 W	155.340	40 Min	1 Hr 10 Min	541-706-4550 (ER)		X		Level 2 Trauma
		44° 04.87 N	123° 01.58 W	155.340	35 Min	1 Hr 10 Min	541-222-6929		X		Level 2 Trauma
St. Charles 2500 Neff Road Bend, OR 97701		44° 04.87 N	123° 01.58 W	155.340	35 Min	1 Hr 10 Min	541-222-6929		X		Level 2 Trauma
		44° 04.87 N	123° 01.58 W	155.340	35 Min	1 Hr 10 Min	541-222-6929		X		Level 2 Trauma
		44° 04.87 N	123° 01.58 W	155.340	35 Min	1 Hr 10 Min	541-222-6929		X		Level 2 Trauma
Sacred Heart Medical Center 3333 Riverbend Dr. Springfield, OR 97477		44° 04.87 N	123° 01.58 W	155.340	35 Min	1 Hr 10 Min	541-222-6929		X		Level 2 Trauma
		44° 04.87 N	123° 01.58 W	155.340	35 Min	1 Hr 10 Min	541-222-6929		X		Level 2 Trauma
		44° 04.87 N	123° 01.58 W	155.340	35 Min	1 Hr 10 Min	541-222-6929		X		Level 2 Trauma
6. Division Branch Group		Capability				Personnel					
N. Diamond		Med transport Ambulance (E-72)									
A/M/P/W		Chemult Ambulance (E-71), EMT Hoover (O-157), EMT Forsythe (O-175), EMP Gregor (O-328)									
7. Prepared By (Medical Unit Leader)				8. Date/Time		9. Reviewed By (Safety Officer)			10. Date/Time		
Eamonn Ryan, Bonnie Gibbons <i>Eamonn Ryan</i>				10/9/2020 1900		Troy Corn <i>Troy Corn</i>					

MEDICAL PLAN (ICS 206 WF)

Controlled Unclassified Information//Basic

Medical Incident Report

FOR A NON-EMERGENCY INCIDENT, WORK THROUGH CHAIN OF COMMAND TO REPORT AND TRANSPORT INJURED PERSONNEL AS NECESSARY.

FOR A MEDICAL EMERGENCY: IDENTIFY ON SCENE INCIDENT COMMANDER BY NAME AND POSITION AND ANNOUNCE "MEDICAL EMERGENCY" TO INITIATE RESPONSE FROM IMT COMMUNICATIONS/DISPATCH.

Use the following items to communicate situation to communications/dispatch.

1. CONTACT COMMUNICATIONS / DISPATCH (Verify correct frequency prior to starting report)

Ex: "Communications, Div. Alpha. Stand-by for Emergency Traffic."

2. INCIDENT STATUS: Provide incident summary (including number of patients) and command structure.

Ex: "Communications, I have a Red priority patient, unconscious, struck by a falling tree. Requesting air ambulance to Forest Road 1 at (Lat./Long.) This will be the Trout Meadow Medical, IC is TFLD Jones. EMT Smith is providing medical care."

Severity of Emergency / Transport Priority	<input type="checkbox"/> RED / PRIORITY 1 Life or limb threatening injury or illness. Evacuation need is IMMEDIATE <i>Ex: Unconscious, difficulty breathing, bleeding severely, 2° – 3° burns more than 4 palm sizes, heat stroke, disoriented.</i> <input type="checkbox"/> YELLOW / PRIORITY 2 Serious Injury or illness. Evacuation may be DELAYED if necessary. <i>Ex: Significant trauma, unable to walk, 2° – 3° burns not more than 1-3 palm sizes.</i> <input type="checkbox"/> GREEN / PRIORITY 3 Minor Injury or illness. Non-Emergency transport <i>Ex: Sprains, strains, minor heat-related illness.</i>	
Nature of Injury or Illness & Mechanism of Injury		<i>Brief Summary of Injury or Illness (Ex: Unconscious, Struck by Falling Tree)</i>
Transport Request		<i>Air Ambulance / Short Haul/Hoist Ground Ambulance / Other</i>
Patient Location		<i>Descriptive Location & Lat. / Long. (WGS84)</i>
Incident Name		<i>Geographic Name + "Medical" (Ex: Trout Meadow Medical)</i>
On-Scene Incident Commander		<i>Name of on-scene IC of Incident within an Incident (Ex: TFLD Jones)</i>
Patient Care		<i>Name of Care Provider (Ex: EMT Smith)</i>

3. INITIAL PATIENT ASSESSMENT: Complete this section for each patient as applicable (start with the most severe patient)

Patient Assessment: See IRPG page 106

Treatment:

4. TRANSPORT PLAN:

Evacuation Location (if different): (Descriptive Location (drop point, intersection, etc.) or Lat. / Long.) Patient's ETA to Evacuation Location:

Helispot / Extraction Site Size and Hazards:

5. ADDITIONAL RESOURCES / EQUIPMENT NEEDS:

Example: Paramedic/EMT, Crews, Immobilization Devices, AED, Oxygen, Trauma Bag, IV/Fluid(s), Splints, Rope rescue, Wheeled litter, HAZMAT, Extrication

6. COMMUNICATIONS: Identify State Air/Ground EMS Frequencies and Hospital Contacts as applicable

Function	Channel Name/Number	Receive (RX)	Tone/NAC *	Transmit (TX)	Tone/NAC *
COMMAND					
AIR-TO-GRND					
TACTICAL					

7. CONTINGENCY: Considerations: If primary options fail, what actions can be implemented in conjunction with primary evacuation method? Be thinking ahead.

8. ADDITIONAL INFORMATION: Updates/Changes, etc.

REMEMBER: Confirm ETA's of resources ordered. Act according to your level of training. Be Alert. Keep Calm. Think Clearly. Act Decisively.

Controlled Unclassified Information//Basic