

# INCIDENT ACTION PLAN

## Archie Creek / Thielsen

October 12, 2020

Operational Period 0700-1900

**MORNING BRIEFING @ 0700** Morning briefing will be a conference call, use the information below to connect:

Phone: 1-888-609-7602

Participant Number: 7544830#

-ALL PERSONNEL-

**MUTE** your phone when you call in to Briefing

Archie Creek  
OR-UPF-000436  
P6NKL8 (0615)  
221 IWO

Thielsen  
OR-UPF-000441  
P6NKN621 (0615)



IAP



CHECK IN



Archie Creek Maps




Thielsen Maps



## INCIDENT OBJECTIVES (ICS 202)

<b>1. Incident Name:</b>	<b>2. Operational Period: DAY</b>	
ARCHIE CREEK / THIELSEN	Date/Time From: 10/12/2020 0700      MON	Date/Time To: 10/12/2020 1900      MON
<b>3. Objective(s):</b>		
Provide for the safety of all responders and public at all times.		
Protect communities, critical infrastructure, timber values, recreation sites and natural resource values.		
Implement Covid-19 prevention and mitigation procedures as outlined by the CDC and the Geographic Wildfire Response Plan.		
Implement strategies and tactics that commit responders only to operations and tasks that will have a high probability of success with the least exposure necessary.		
Coordinate suppression repair tasks with Resource Advisors and implement in a manner that will minimize impacts to protected cultural and aquatic resources.		
<b>4. Operational Period Command Emphasis:</b>		
Continue to implement the suppression repair plan and coordinate work assignments with assigned Resource Advisors.		
<b>General Situational Awareness:</b>		
Monitor the weather, scout work area for hazards and adjust your work assignment based on conditions.		
<b>5. Site Safety Plan Required?</b> Yes <input type="checkbox"/> No <input checked="" type="checkbox"/>		
<b>Approved Site Safety Plan(s) Located at:</b>		
<b>6. Incident Action Plan</b> (the items checked below are included in this Incident Action Plan):		
<input checked="" type="checkbox"/> ICS 202	<input type="checkbox"/> ICS 207	Other Attachments:
<input checked="" type="checkbox"/> ICS 203	<input type="checkbox"/> ICS 208	<input checked="" type="checkbox"/> SAFETY MESSAGE
<input checked="" type="checkbox"/> ICS 204	<input checked="" type="checkbox"/> ICS 220	<input checked="" type="checkbox"/> HUMAN RESOURCE MSG
<input checked="" type="checkbox"/> ICS 205	<input type="checkbox"/> Map/Chart	<input checked="" type="checkbox"/> COVID PRECAUTIONS & SCREENING TOOL
<input type="checkbox"/> ICS 205A	<input checked="" type="checkbox"/> Weather Forecast/Tides/Currents	<input checked="" type="checkbox"/> UNIT LOG
<input checked="" type="checkbox"/> ICS 206		
<b>7. Prepared by:</b> MARGE HUTCHINSON      Position/Title:      PSC2	Signature: <i>Marge Hutchinson</i>	
<b>8. Approved by Incident Commander:</b>	Name:      BOBBY SHINDELAR	Signature: <i>Bobby Shindelar</i>
<b>ICS 202</b>	<b>IAP Page</b>	Date/Time:      10/11/2020 2020

## ORGANIZATION ASSIGNMENT LIST (ICS 203)

<b>1. Incident Name:</b>		<b>2. Operational Period:</b> DAY	
ARCHIE CREEK / THIELSEN		Date/Time From: 10/12/2020 0700 MON	Date/Time To: 10/12/2020 1900 MON
<b>3. Incident Commander(s) and Command Staff:</b>		COMMUNICATIONS UNIT	MISSY PARKER
INCIDENT COMMANDER	BOBBY SHINDELAR	SUPPLY UNIT	JOHN KAUPA
DEPUTY		MEDICAL UNIT	BONNIE GIBBONS LEE VENNING (T)
SAFETY OFFICER	TROY CORN JACK CATES	SECURITY UNIT	KEVIN REISH
INFORMATION OFFICER	MARY BEAN ROLAND EMETAZ	FOOD UNIT	JOHN SHACKELFORD
LIAISON OFFICER	SCOTT CRAWFORD		
HUMAN RESOURCE SPECIALIST	SUSIE MANEZES	<b>7. Operations Section:</b>	
COVID COORDINATOR	LIV STECKER	PLANNING OPS	MATT CASTLE
		OPERATION SECTION CHIEF	JEFF BOUSCHOR TONY ENGEL
<b>4. Agency/Organization Representative(s):</b>			
<b>Agency/Organization</b>	<b>Name</b>		
UMPQUA NF - AA	ALICE CARLTON	DIVISION/GROUP	ARCHIE CK - A/R/S LARRY LEACH
UMPQUA NF - AREP	K.C. BRIGGS SHERRI CHAMBERS	DIVISION/GROUP	ARCHIE CK - F/H/K MATT KENNEDY
BLM - AA	HEATHER WHITMAN	DIVISION/GROUP	ARCHIE CK - N/Q MICHAEL JACKSON
BLM - RESOURCE ADVISOR	JEFF MCENROE	DIVISION/GROUP	ARCHIE CK - WRIGHT CREEK BOB HINDS JAMES DICKINSON (T)
BLM - AREP	CHRIS FOSTER	BRANCH DIRECTOR	AARON ROWE
USFS - RESOURCE ADVISOR	JOSH CHAPMAN JED HANCOCK	DIVISION/GROUP	THIELSEN - NORTH DIAMOND RICHARD TINGLE JEFF PRICHER
<b>5. Planning Section:</b>		DIVISION/GROUP	THIELSEN - A/M/P/W CODY ACORD CHRIS WHITE (T)
CHIEF	MARGE HUTCHINSON HOWARD JOHNSON (VIRTUAL)		
DEPUTY	ERIC BLACK	<b>7b. Air Operations Branch:</b>	
RESOURCES UNIT	JILL JOHNSON	AIR OPS BRANCH DIRECTOR	
SITUATION UNIT	DAVE WISCHER	AIR ATTACK SUPERVISOR	
DOCUMENTATION UNIT	JEFF DEARDORFF	AIR SUPPORT SUPERVISOR	
DEMOBILIZATION UNIT	NATHAN JEFFRIES (VIRTUAL)		
FIRE BEHAVIOR ANALYST	DON STRAND		
TRAINING SPECIALIST	ERIKA DAVIS	<b>8. Finance/Administration Section:</b>	
GIS SPECIALIST	SHAWN BUSHNELL; BOB KIRK	CHIEF	CHERI FULLER
TECHNOLOGY SUPPORT SPECIALIST	GEORGE JENKINS DAVID JOHNSON	DEPUTY	BARB HAXBY
INCIDENT METEOROLOGIST	BOB TOBIN (VIRTUAL)	TIME UNIT	CAROL LONG
		PROCUREMENT UNIT	MARK BOHNET
		COST UNIT	STEVE CROW
		ICPI	ROB HECHINGER
<b>6. Logistics Section:</b>			
CHIEF	PETER FITZMAURICE		
DEPUTY			
FACILITIES UNIT	KEVIN HAUGHTON		
GROUND SUPPORT UNIT	MARK ANDERSON		
<b>9. Prepared By:</b>	<b>Name:</b> JILL JOHNSON	<b>Position/Title:</b> RESL	<b>Signature:</b> 
ICS 203	IAP Page	<b>Date/Time:</b> 10/11/2020 2025	

**FIRE WEATHER FORECAST**

**FORECAST NO:** 33  
**SHIFT DATE:** Monday, Oct 12<sup>th</sup>, 2020  
**PREDICTION FOR:** 0700-1900  
**UNIT:** OR- Umpqua NF

**INCIDENT NAME:** Archie Creek/Thielsen  
**Incident Meteorologist –** Bob Tobin  
**SIGNED:** *Bob Tobin*

**TIME AND DATE**  
**FORECAST ISSUED:** 2000 hrs. 10/11/20

---

**WEATHER DISCUSSION:** Mainly westerly flow over the region today through Tuesday night. This will keep a cool and unsettled atmosphere over the fire area with a good chance of showers and a wetting rain again on Tuesday. A ridge of high pressure will build into the region on Wednesday and strengthen over the west through at least Sunday. This will result in a warming and drying trend through next weekend.

---

**SKY/WEATHER TODAY:** Mostly Cloudy with a chance of morning rain. Clearing through the afternoon.

**MAX TEMPERATURES / MIN RELATIVE HUMIDITY:**

**3000 FT: (Archie Creek)** 52 to 57 degrees (Up 2-3) / 65 to 70 (Down 5)  
**5000 FT: (Thielsen)** 44 to 48 degrees (Up 3-4) / 80 to 85 (Little change)

**20 FOOT WINDS:**

**Slope/Valley:** Southwest 8-12 mph.  
**Ridges:** Southwest 15-18 with gusts 25 to 30 mph.

**Transport Wind:** W 12-15 mph.

**LAL:** 1. **Chc of Wetting Rain (> or = to 0.25"):** 35%  
**Inversion:** Moderate at 700 ft AGL early. **Afternoon Mixing Height:** 3200 ft AGL.

---

**SKY/WEATHER TONIGHT:** Increasing clouds with a chance of rain by morning. Snow levels 8500 feet overnight. Rain amounts less than 0.10.

**MIN TEMPERATURES / MAX RELATIVE HUMIDITY**

**3000 FT: (Archie Creek)** 48 to 52 degrees (Up 3-5) / 80 to 90% (Down 5-10%)  
**5000 FT: (Thielsen)** 38 to 42 degrees (Up 2-3) / 80 to 90% (Down 5%)

**20 FOOT WINDS:**

**Slope/Valley:** South 7-10.  
**Ridges:** South-Southwest 10-15 mph.

**LAL:** 1. **Chc of Wetting Rain (> OR = to 0.25"):** 15%  
**Inversion:** Moderate at 1000 ft AGL.

---

**2-5 Day Outlook, Tue-Fri (3000 Feet):** Zonal flow will keep conditions cool and unsettled through Tuesday. High pressure at the end of the week will result in a warming and drying trend.

---

**Tuesday:** Mostly cloudy with rain likely. **High Temp:** 50-60 **Min RH:** 65-80. **Wind:** SW 8-10 G12 mph.

**Wednesday:** Variable clouds.. **High Temp:** 55-60 **Min RH:** 45-55. **Wind:** NW-N 8-10 mph.

**Thursday:** Mostly sunny. **High Temp:** 55-65 **Min RH:** 40-45. **Wind:** N-NE 8-12 mph.

**Friday:** Sunny. **High Temp:** 60-70 **Min RH:** 40-45. **Wind:** N-NE 10-12 mph.

---

**Observations from midnight through 1700 PDT Saturday, 10/10/20:**

**North Bank (1913ft):** Temps 47F/62F, RH: 99%/60%, Pk Wind: SE 13 G24 mph.

**Little River IRAWS (2100ft):** Temps 46F/60F, RH: 100%/63%, Pk Wind: E-SE 3g12.

**Grandad (2900ft):** Temps: 44F/56F, RH: 99%/74%, Pk Wind: SW 4 G 12.

**Lookout Mtn PRAWS (4739ft):** Temps: 38F/47F, 100%/90%, Pk Wind: NW 5 G 12 mph.

**Cinnamon (4834ft):** Temps: 39F/56F, 100%/71%, Pk Wind: E 3 G 8 mph.

## FIRE BEHAVIOR FORECAST

<b>FORECAST NUMBER:</b> 32	<b>TYPE OF FIRE:</b> Wildland
<b>FIRE NAME:</b> Archie Creek / Thielsen	<b>OPERATIONAL PERIOD:</b> Oct. 12, 2020 (0700-1900)
<b>DATE ISSUED:</b> October 11, 2020	<b>TIME ISSUED:</b> 2000 Hours
<b>UNIT:</b> Umpqua NF	<b>SIGNED:</b> _____ Don Strand _____

### INPUTS

**WEATHER SUMMARY:** See attached forecast  
Archie Creek: Temps 52-57, Min RH's 65-70%, Winds: slope/valley SW 8-12 mph, ridges SW 15-18, gusts 25-30 mph.  
Thielsen: Temps 44-48, Min RH's 80-85%, Winds: slope/valley SW 8-12 mph, ridges SW 15-18 with gusts 25-30 mph.

### OUTPUTS

#### FIRE BEHAVIOR

**GENERAL:** Expect minimal fire behavior to continue due to precipitation. Larger logs and woody debris may continue to smolder in those areas where visible smokes have been present the last couple of days.

**Archie Creek:** Forecasted 1-hour fuel moistures minimums will be near 14% and 10- hour fuels near 28%, 1000- hour fuel moistures near 18%. ERC-G values yesterday were 25 and forecasted to be 15 today, down 9.

**Thielsen:** Forecasted 1-hour fuels moistures 15%, 10-hour fuels moistures will approach 28%, 1000-hour fuel moistures will be near 20%. ERC-G values yesterday were 18 and forecasted to be near 10 today, down 8.

**AIR OPERATIONS:** Mostly cloudy with a chance of morning rain.

### Safety

**Most of this fire has been going for over a month. Much of the fire area has very little heat and what heat there is there is mostly large diameter logs, stumps live and dead trees. What hazards are associated with those larger fuels?**

**In the areas we are working occasionally stop and look around to see if your situation has changed. Periodically update you Situational Awareness.**

# Safety Message

12 October 2020

INCIDENT: Archie Creek/Thielsen

OPERATIONAL PERIOD: 0700-1900

## TOPICS:

### MISSION CREEP

Mission Creep is the expansion of a mission or task beyond original objectives or assignment. In our business this is most often undesirable unless serious life considerations are at risk. Many times, Mission Creep will continue once started until catastrophic failure or undesirable outcomes are encountered. Plans are built based on set and measurable objectives. Stay in your lane and avoid the urge to creep and remember, mission creep occurs during all missions, not just during suppression activities.

### INSECT FRIENDS

The wet and cooler weather has pushed our eight leg friends to seek warm and dry conditions within our tents. Please check your doors and seams before opening/entering your tent.

### DRIVING/TRANSPORTATION

Practice defensive driving skills and maintain time and distance from other vehicles and visual obstructions such as curves and blind spots. Be aware of debris fall and logs along the right-of-way. Keep your speeds low and take your time.

**“Don’t forget your COVID protocols and mitigations”**

SAFETY OFFICER: Troy Corn, Jack Cates

## Deliberate Risk Assessment-Hazard Summary

### 12 October 2020

Hazard	Mitigation	Post Risk
COVID Viral Transmission	Maintain awareness of health, perform self-checks, maintain social distancing, wear face covering when within social distancing space (minimum 6'), report and isolate if not feeling well, implement Module of One and Hub/Spoke criteria to greatest extent possible, establish relationship with local public health, establish a schedule to clean all frequently touched surfaces, maintain cleanliness of own workspace, box meals by crew (no more than 20), single person distribution for meals and hydration (24 hour supply of hydration each day supplied with breakfast)	Low
Extraction Time	Identify medivac sites and helispots. Initiate ground transport to accident site. Identify EMT's from resources assigned to division. Provide line qualified paramedics to each division as available. Review IWI protocol to ensure familiarity. Utilize short haul in remote areas. Evaluate on-going need for repositioning medical personnel.	High
Steep Terrain/Gravity	Do not work crews above or below each other. Post lookouts for rolling material. Watch footing in loose soil, rock and around vegetation. Do not work below heavy equipment. Scout and identify travel routes. Establish LCES.	Moderate
Physical Factors	Maintain hydration schedule. Closely monitor work rate and implement rest periods. Maintain nutrition. Ensure adequate work/rest.	Moderate
Environmental Factors	Assign medical personnel to camp. Assess for known allergies and report to medical personnel. Obtain Bee Bopper/wasp spray and yellow jacket traps. Locate dumpsters/trash, food and feeding areas away from sleeping and assembly areas. <b>Establish work windows during periods of heavy rainfall and/or cold weather conditions. Evaluate transportation routes for washout and debris fall potential and establish MAP for disengagement.</b>	Moderate
Snags/Falling	<b>Conduct on-going risk analysis of all work areas. Use mechanized falling to the greatest extent possible. Avoid use of agency personnel for hand falling. Follow Hazard Tree Safety Guidelines (IRPG page 22). Ensure use of protective equipment. Use qualified personnel for danger tree identification.</b>	High
Transportation	Signing of all incident roads that provide access to divisions. Daily updated travel plan maps. In local communities obey the posted speed limits. Use reader boards to control entry as needed. Identify and evaluate contingency and alternate escape and travel routes, implement controls as needed. <b>Practice defensive driving. Maintain an awareness of wildlife, rock fall and heavy truck traffic. Reduce speed and increase following distance as needed.</b>	High
Public Interaction	Implement road and area closures in and adjacent to the perimeter.	Moderate
Heavy Equipment	Post lookouts around equipment work areas. Establish communications with equipment boss and operator. Do not work down slope from equipment. <b>Familiarize crews with specialty equipment and processes.</b>	High

**Division/Group Assignment List (ICS 204 WF)**  
**Controlled Unclassified Information//Basic**

<b>1. Incident Name:</b>			<b>3.</b>			
ARCHIE CREEK			<b>Branch:</b>		<b>Division/Group:</b>	
<b>2. Operational Period: DAY</b>			<b>A/R/S</b>			
Date/Time From: 10/12/2020 0700 MON		Date/Time To: 10/12/2020 1900 MON				
<b>4. Operations Personnel</b>						
<b>OPERATIONS CHIEF</b>		JEFF BOUSCHOR; TONY ENGEL MATT CASTLE		<b>DIVISION/GROUP SUPERVISOR</b>		LARRY LEACH
<b>AIR ATTACK SUPERVISOR</b>		TIM LYDA		<b>SAFETY OFFICER</b>		TROY CORN JACK CATES
<b>5. Resources Assigned this Period</b>						
Strike Team / Task Force / Resource Designator		LWD	Leader	Number Persons	Drop Off PT./Time	Pick Up PT./Time
O-589.8 SOFR		10/18	CODY TRABER	1	ARCHIE CK ICP/0700	ARCHIE CK ICP/1900
E-383 ENG3 OR-UPF 35		10/15	MARISSA DUARTE	5	ARCHIE CK ICP/0700	ARCHIE CK ICP/1900
E-312 EXCA WARREN PARTRIDGE CONTR T2		10/14	MICHELLE PARTRIDGE	1	ARCHIE CK ICP/0700	ARCHIE CK ICP/1900
E-8190 LDFR DEAN LOGGING		10/16	BILL DELANEY	2	LOG YARD/0700	LOG YARD/1900
O-10003 READ (BLM)		10/31	JEFFREY MCENROE	1	ARCHIE CK ICP/0700	ARCHIE CK ICP/1900
E-175 AMBU AMR MEDIC 3		10/19	SEAN RAWSON	2	ARCHIE CK ICP/0700	ARCHIE CK ICP/1900
<b>6. Control Operations/Work Assignments:</b>						
<p>Task: Patrol and Mop-up as needed. Complete suppression repair per repair plan standards.          Purpose: Continue to protect values and limit resource damage through suppression efforts.          End State: To eliminate the threat to improvements and timber values.</p>						
<b>7. Special Instructions:</b>						
<b>8. Division/Group Communication Summary</b>						
Function	Channel	RX Frequency N/W	RX Tone/NAC	TX Frequency N/W	TX Tone/NAC	Mode
TACTICAL	1	168.0500N	123.0	168.0500N	123.0	A
COMMAND	7	171.8250N	123.0	168.4250N	123.0	A
COMMAND	9	170.4500N	123.0	168.1000N	123.0	A
AIR TO GROUND	14	168.2875N		168.2875N		A
<b>9. Prepared By (Resource Unit Leader)</b>			<b>Approved By (Planning Section Chief)</b>		<b>Date</b>	<b>Time</b>
JILL JOHNSON			MARGE HUTCHINSON		10/11/2020	2025



**Division/Group Assignment List (ICS 204 WF)**  
**Controlled Unclassified Information//Basic**

<b>1. Incident Name:</b>			<b>3.</b>			
ARCHIE CREEK			<b>Branch:</b>		<b>Division/Group:</b>	
<b>2. Operational Period: DAY</b>			<b>F/H/K</b>			
Date/Time From: 10/12/2020 0700 MON		Date/Time To: 10/12/2020 1900 MON				
<b>4. Operations Personnel</b>						
<b>OPERATIONS CHIEF</b>		JEFF BOUSCHOR; TONY ENGEL MATT CASTLE		<b>DIVISION/GROUP SUPERVISOR</b>		MATT KENNEDY
<b>AIR ATTACK SUPERVISOR</b>		TIM LYDA		<b>SAFETY OFFICER</b>		TROY CORN JACK CATES
<b>5. Resources Assigned this Period</b>						
Strike Team / Task Force / Resource Designator		LWD	Leader	Number Persons	Drop Off PT./Time	Pick Up PT./Time
O-589.8 SOFR		10/18	CODY TRABER	1	ARCHIE CK ICP/0700	ARCHIE CK ICP/1900
O-314 FMOD C & K WILDLAND FIRE 6		10/24	RICKIE HUNT	2	ARCHIE CK ICP/0700	ARCHIE CK ICP/1900
E-310 TUB GRINDER NEXTERRA		10/15	JOE NUTTBROCK	1	ARCHIE CK ICP/0700	ARCHIE CK ICP/1900
E-431 LDFR DEAN INNOVATIONS		10/19	ARTURO MICHEL	1	ARCHIE CK ICP/0700	ARCHIE CK ICP/1900
E-432 TDMP CLINT HATFIELD TRUCKING		10/22	RICHARD HILLYARD	1	ARCHIE CK ICP/0700	ARCHIE CK ICP/1900
E-433 TDMP CLINT HATFIELD TRUCKING		10/20	BRIAN DELCOLLO	1	ARCHIE CK ICP/0700	ARCHIE CK ICP/1900
E-434 TDMP DEAN INNOVATIONS, DUMP TRUCK		10/19	MARSHALL MILLS	1	ARCHIE CK ICP/0700	ARCHIE CK ICP/1900
O-10003 READ (BLM)		10/31	JEFFREY MCENROE	1	ARCHIE CK ICP/0700	ARCHIE CK ICP/1900
O-70 REAF (FS)		10/22	LUIS PALACIOS	1	ARCHIE CK ICP/0700	ARCHIE CK ICP/1900
O-359 FFT2 (W/ FS READS)		10/17	BENJAMIN PURSLEY	1	ARCHIE CK ICP/0700	ARCHIE CK ICP/1900
O-360 REAF (FS)			ALAN HEATH	1	ARCHIE CK ICP/0700	ARCHIE CK ICP/1900
O-450 READ (FS)		10/12	RON MCMULLIN	1	ARCHIE CK ICP/0700	ARCHIE CK ICP/1900
O-502 ARCH (FS)		10/12	TROY FERONE	1	ARCHIE CK ICP/0700	ARCHIE CK ICP/1900
<b>6. Control Operations/Work Assignments:</b>						
Task: Patrol. Continue suppression repair per repair plan standards. Purpose: Protection of timber resources and improvements. End State To eliminate the threat to improvements and timber values.						
<b>7. Special Instructions:</b>						
<b>8. Division/Group Communication Summary</b>						
Function	Channel	RX Frequency N/W	RX Tone/NAC	TX Frequency N/W	TX Tone/NAC	Mode
TACTICAL	2	168.2000N	123.0	168.2000N	123.0	A
COMMAND	10	169.5375N	123.0	164.7125N	123.0	A
COMMAND	13	170.5500N	103.5	164.8000N	192.8	A
AIR TO GROUND	14	168.2875N		168.2875N		A
<b>9. Prepared By (Resource Unit Leader)</b>			<b>Approved By (Planning Section Chief)</b>		<b>Date</b>	<b>Time</b>
JILL JOHNSON			MARGE HUTCHINSON		10/11/2020	2025

**Division/Group Assignment List (ICS 204 WF)**  
**Controlled Unclassified Information//Basic**

<b>1. Incident Name:</b>			<b>3.</b>			
ARCHIE CREEK			<b>Branch:</b>		<b>Division/Group:</b>	
<b>2. Operational Period: DAY</b>			<b>N/Q</b>			
Date/Time From: 10/12/2020 0700      MON		Date/Time To: 10/12/2020 1900      MON				
<b>4. Operations Personnel</b>						
<b>OPERATIONS CHIEF</b>		JEFF BOUSCHOR; TONY ENGEL MATT CASTLE		<b>DIVISION/GROUP SUPERVISOR</b>		MICHAEL JACKSON
<b>AIR ATTACK SUPERVISOR</b>		TIM LYDA		<b>SAFETY OFFICER</b>		TROY CORN JACK CATES
<b>5. Resources Assigned this Period</b>						
Strike Team / Task Force / Resource Designator		LWD	Leader	Number Persons	Drop Off PT./Time	Pick Up PT./Time
O-561 SOF1 (T)		10/15	JOHN FUGITT	1	ARCHIE CK ICP/0700	ARCHIE CK ICP/1900
O-515 TFLD		10/13	THADDEUS NIEBEL	1	ARCHIE CK ICP/0700	ARCHIE CK ICP/1900
C-70 HC2I UMPQUA NORTH ZONE #3		10/19	SKYLER SHRUM	17	ARCHIE CK ICP/0700	ARCHIE CK ICP/1900
C-72 HC2I UMPQUA SOUTH ZONE 2		10/23	JASON DUNN	13	ARCHIE CK ICP/0700	ARCHIE CK ICP/1900
E-9 ENG6 FIRST STRIKE		10/25	GERALD COATS	2	ARCHIE CK ICP/0700	ARCHIE CK ICP/1900
E-232 ENG4 WILDFIRE SERVICES 5		10/17	JASON SARE	3	ARCHIE CK ICP/0700	ARCHIE CK ICP/1900
E-365 ENG3 ORUPF ENGINE 14		10/13	IAN PROFITT	4	ARCHIE CK ICP/0700	ARCHIE CK ICP/1900
E-244 DOZ3 PACIFIC RIDGELINE FORESTRY		10/17	TONY BALDWIN	2	ARCHIE CK ICP/0700	ARCHIE CK ICP/1900
E-313 EXCA OWENS FREIGHT LINES, INC		10/23	ZACH BIRKEY	2	ARCHIE CK ICP/0700	ARCHIE CK ICP/1900
E-337 EXCA ZEBS TREE SERVICE T3		10/18	DOUG STAFF	2	ARCHIE CK ICP/0700	ARCHIE CK ICP/1900
E-357 EXCA MARK JONES TRUCKING		10/23	MARK BARTLETT	2	ARCHIE CK ICP/0700	ARCHIE CK ICP/1900
E-90 FEL2 MARK JONES TRUCKING		10/15	MARK GODWIN	1	ARCHIE CK ICP/0700	ARCHIE CK ICP/1900
E-161 MAST JERRY SWEARINGEN CONSTR		10/14	JERRY SWEARINGEN	2	ARCHIE CK ICP/0700	ARCHIE CK ICP/1900
E-385 CHIP PACIFIC RIDGLELINE		10/16	GARY WYLEY	1	ARCHIE CK ICP/0700	ARCHIE CK ICP/1900
E-384 CHIP ZEBS TREE SVC		10/15	JORDAN ALLBRITTON	2	ARCHIE CK ICP/0700	ARCHIE CK ICP/1900
E-386 CHIP SAYLOR CONSTRUCTION		10/20	JASON SAYLOR	1	ARCHIE CK ICP/0700	ARCHIE CK ICP/1900
E-48 LOG TRK MARK JONES TRUCKING		10/23	MARK JONES	1	ARCHIE CK ICP/0700	ARCHIE CK ICP/1900
E-49 LOG TRK MARK JONES TRUCKING		10/19	RICK SMITH	1	ARCHIE CK ICP/0700	ARCHIE CK ICP/1900
<b>8. Division/Group Communication Summary</b>						
Function	Channel	RX Frequency N/W	RX Tone/NAC	TX Frequency N/W	TX Tone/NAC	Mode
TACTICAL	5	166.7750N	123.0	166.7750N	123.0	A
COMMAND	8	173.5000N	123.0	168.5625N	123.0	A
COMMAND	9	170.4500N	123.0	168.1000N	123.0	A
AIR TO GROUND	14	168.2875N		168.2875N		A
<b>9. Prepared By (Resource Unit Leader)</b>			<b>Approved By (Planning Section Chief)</b>		<b>Date</b>	<b>Time</b>
JILL JOHNSON			MARGE HUTCHINSON		10/11/2020	2025

**Division/Group Assignment List (ICS 204 WF)**  
**Controlled Unclassified Information//Basic**

<b>1. Incident Name:</b>			<b>3.</b>			
ARCHIE CREEK			<b>Branch:</b>		<b>Division/Group:</b>	
<b>2. Operational Period: DAY</b>			<b>N/Q</b>			
Date/Time From: 10/12/2020 0700 MON		Date/Time To: 10/12/2020 1900 MON				
<b>4. Operations Personnel</b>						
<b>OPERATIONS CHIEF</b>		JEFF BOUSCHOR; TONY ENGEL MATT CASTLE		<b>DIVISION/GROUP SUPERVISOR</b>		MICHAEL JACKSON
<b>AIR ATTACK SUPERVISOR</b>		TIM LYDA		<b>SAFETY OFFICER</b>		TROY CORN JACK CATES
<b>5. Resources Assigned this Period</b>						
Strike Team / Task Force / Resource Designator		LWD	Leader	Number Persons	Drop Off PT./Time	Pick Up PT./Time
E-92 LDFR NW LOGGING INC		10/23	ROSS PAINTER	2	ARCHIE CK ICP/0700	ARCHIE CK ICP/1900
O-66 REAF (FS)			JESSE SOY	1	ARCHIE CK ICP/0700	ARCHIE CK ICP/1900
O-70 REAF (FS)		10/22	LUIS PALACIOS	1	ARCHIE CK ICP/0700	ARCHIE CK ICP/1900
O-140 READ (FS)			CHRIS WOODCOCK	1	ARCHIE CK ICP/0700	ARCHIE CK ICP/1900
O-359 FFT2 (W/ FS READS)		10/17	BENJAMIN PURSLEY	1	ARCHIE CK ICP/0700	ARCHIE CK ICP/1900
O-360 REAF (FS)			ALAN HEATH	1	ARCHIE CK ICP/0700	ARCHIE CK ICP/1900
O-384 REAF (T) (FS)			JOHN ANTHONY	1	ARCHIE CK ICP/0700	ARCHIE CK ICP/1900
O-486 REAF (T) (FS)		10/10	DANE SJODEN	1	ARCHIE CK ICP/0700	ARCHIE CK ICP/1900
O-502 ARCH (FS)		10/12	TROY FERONE	1	ARCHIE CK ICP/0700	ARCHIE CK ICP/1900
O-382 REM DOUGLAS CO		10/19	MIKE MERLINO	4	ARCHIE CK ICP/0700	ARCHIE CK ICP/1900
E-29 AMBU MEDIC 1		10/12	HUDSON/PLUMMER	2	ARCHIE CK ICP/0700	ARCHIE CK ICP/1900
E-291 AMBU MEDIC 5		10/14	GREG EDWARDS	2	ARCHIE CK ICP/0700	ARCHIE CK ICP/1900
<b>6. Control Operations/Work Assignments:</b>						
Task: Patrol. Continue suppression repair per repair plan standards. Reduce Danger trees along 4712 road.						
Purpose: Protection of timber resources and improvements. Allow current and future work forces to safely travel along the road corridors.						
End State: To eliminate the threat to improvements and timber values. Reduce hazards along road system.						
<b>7. Special Instructions:</b>						
E-353 ENG4 Forest Service will R&R on 10/12-10/13, returning to the Division on 10/14.						
<b>8. Division/Group Communication Summary</b>						
Function	Channel	RX Frequency N/W	RX Tone/NAC	TX Frequency N/W	TX Tone/NAC	Mode
TACTICAL	5	166.7750N	123.0	166.7750N	123.0	A
COMMAND	8	173.5000N	123.0	168.5625N	123.0	A
COMMAND	9	170.4500N	123.0	168.1000N	123.0	A
AIR TO GROUND	14	168.2875N		168.2875N		A
<b>9. Prepared By (Resource Unit Leader)</b>			<b>Approved By (Planning Section Chief)</b>		<b>Date</b>	<b>Time</b>
JILL JOHNSON			MARGE HUTCHINSON		10/11/2020	2025

**Division/Group Assignment List (ICS 204 WF)**  
**Controlled Unclassified Information//Basic**

<b>1. Incident Name:</b>				<b>3.</b>		
ARCHIE CREEK				<b>Branch:</b>	<b>Division/Group:</b>  <b>WRIGHT CREEK</b>	
<b>2. Operational Period: DAY</b>						
Date/Time From: 10/12/2020 0700 MON		Date/Time To: 10/12/2020 1900 MON				
<b>4. Operations Personnel</b>						
<b>OPERATIONS CHIEF</b>		JEFF BOUSCHOR; TONY ENGEL MATT CASTLE		<b>DIVISION/GROUP SUPERVISOR</b>		BOB HINDS JAMES DICKINSON (T)
<b>AIR ATTACK SUPERVISOR</b>		TIM LYDA		<b>SAFETY OFFICER</b>		TROY CORN JACK CATES
<b>5. Resources Assigned this Period</b>						
Strike Team / Task Force / Resource Designator	LWD	Leader	Number Persons	Drop Off PT./Time	Pick Up PT./Time	
O-643 SOF2	10/22	JOHN STUCHELL	1	ARCHIE CK ICP/0700	ARCHIE CK ICP/1900	
O-524 TFLD	10/13	ERIC ANDERSON	1	ARCHIE CK ICP/0700	ARCHIE CK ICP/1900	
O-684 TFLD	10/24	BOB DANCHOK	1	ARCHIE CK ICP/0700	ARCHIE CK ICP/1900	
O-598 HEQB	10/17	JOHN CAROON	1	ARCHIE CK ICP/0700	ARCHIE CK ICP/1900	
O-607 HEQB (T)	10/17	KENNY LEMMONDS	1	ARCHIE CK ICP/0700	ARCHIE CK ICP/1900	
O-669 FELB	10/23	CALIB BALDWIN	1	ARCHIE CK ICP/0700	ARCHIE CK ICP/1900	
O-14 FMOD TIMBER TIPPER	10/22	C. ABAUGH/G. REDDEKOPP	2	ARCHIE CK ICP/0700	ARCHIE CK ICP/1900	
O-313 FMOD C & K WILDLAND FIRE, LLC	10/24	JIMMY THOMAS	2	ARCHIE CK ICP/0700	ARCHIE CK ICP/1900	
O-361 FMOD TIMBER TIPPER	10/19	RAY SCHLATTER	2	ARCHIE CK ICP/0700	ARCHIE CK ICP/1900	
E-318 EXCA URE OUTDOORS	10/17	DON GILBERT	1	ARCHIE CK ICP/0700	ARCHIE CK ICP/1900	
E-329 LDFR MILLER TIMBER SVCS 280	10/15	KYLE SWANK	1	ARCHIE CK ICP/0700	ARCHIE CK ICP/1900	
E-346 LDFR J&D LOGGING & CONTR	10/13	COLBY BRADFORD	2	ARCHIE CK ICP/0700	ARCHIE CK ICP/1900	
E-347 LDFR J&D LOGGING & CONTR	10/13	JOHN SANOWSKI	2	ARCHIE CK ICP/0700	ARCHIE CK ICP/1900	
E-8191 LDFR MARK JONES TRUCKING	10/16	BILL DELANEY	2	ARCHIE CK ICP/0700	ARCHIE CK ICP/1900	
E-341 SKD1 MARK JONES TRUCKING	10/12	SABASTIAN FLORENCE	2	ARCHIE CK ICP/0700	ARCHIE CK ICP/1900	
E-360 SKD1 WARREN PARTRIDGE	10/15	WARREN PARTRIDGE	1	ARCHIE CK ICP/0700	ARCHIE CK ICP/1900	
E-100 FEL1 PONSEE HARVESTER MILLER	10/18	TREVEN OKES	2	ARCHIE CK ICP/0700	ARCHIE CK ICP/1900	
<b>8. Division/Group Communication Summary</b>						
Function	Channel	RX Frequency N/W	RX Tone/NAC	TX Frequency N/W	TX Tone/NAC	Mode
TACTICAL	3	168.6000N	123.0	168.6000N	123.0	A
COMMAND	7	171.8250N	123.0	168.4250N	123.0	A
COMMAND	10	169.5375N	123.0	164.7125N	123.0	A
AIR TO GROUND	14	168.2875N		168.2875N		A
<b>9. Prepared By (Resource Unit Leader)</b>			<b>Approved By (Planning Section Chief)</b>		<b>Date</b>	<b>Time</b>
JILL JOHNSON			MARGE HUTCHINSON		10/11/2020	2025

**Division/Group Assignment List (ICS 204 WF)**  
**Controlled Unclassified Information//Basic**

<b>1. Incident Name:</b>			<b>3.</b>			
ARCHIE CREEK			<b>Branch:</b>		<b>Division/Group:</b>	
<b>2. Operational Period: DAY</b>			<b>WRIGHT CREEK</b>			
Date/Time From: 10/12/2020 0700 MON		Date/Time To: 10/12/2020 1900 MON				
<b>4. Operations Personnel</b>						
<b>OPERATIONS CHIEF</b>		JEFF BOUSCHOR; TONY ENGEL MATT CASTLE		<b>DIVISION/GROUP SUPERVISOR</b>		BOB HINDS JAMES DICKINSON (T)
<b>AIR ATTACK SUPERVISOR</b>		TIM LYDA		<b>SAFETY OFFICER</b>		TROY CORN JACK CATES
<b>5. Resources Assigned this Period</b>						
Strike Team / Task Force / Resource Designator		LWD	Leader	Number Persons	Drop Off PT./Time	Pick Up PT./Time
O-70 REAF (FS)		10/22	LUIS PALACIOS	1	ARCHIE CK ICP/0700	ARCHIE CK ICP/1900
O-140 READ (FS)			CHRIS WOODCOCK	1	ARCHIE CK ICP/0700	ARCHIE CK ICP/1900
O-502 ARCH (FS)		10/12	TROY FERONE	1	ARCHIE CK ICP/0700	ARCHIE CK ICP/1900
E-286 AMBU AMERICAN MEDICAL RESPONSE 0988 AMR ALS		10/16	ALBIN / PARSON	2	ARCHIE CK ICP/0700	ARCHIE CK ICP/1900
O-430 REMS BEYOND THE EDGE		10/20	RAY STORM	1	ARCHIE CK ICP/0700	ARCHIE CK ICP/1900
O-496 EMPF		10/13	CODY BENNETT	1	ARCHIE CK ICP/0700	ARCHIE CK ICP/1900
<b>6. Control Operations/Work Assignments:</b>						
<p><u>Task:</u> Utilize qualified READ to identify burned and scorched danger trees. Cut, process, remove and deck danger trees that could threaten the 4711 Road (see Archie Creek and Thielsen Danger tree falling specifications). Utilize mechanized equipment to limit exposure to falling and bucking hazards. Use hand falling and bucking only as needed. Transport non-merchantable material to designated areas for chipping and storage.</p> <p><u>Purpose:</u> Remove danger trees that could potentially threaten the 4711 Road travel corridor. Prepare and store merchantable logs for disposal. Remove and chip resulting slash to reduce future fire hazard potential.</p> <p><u>End State:</u> Danger trees are identified by qualified READs and removed based on Archie Creek Fire Repair Plan. Merchantable material is available for disposal and slash hazard is reduced.</p>						
<b>7. Special Instructions:</b>						
<p>E-8200 TDMP Belloir Trucking Inc will R&amp;R on 10/12-10/13, returning to Division on 10/14.  E-8201 TDMP Marshall Trucking will R&amp;R on 10/12-10/13, returning to Division on 10/14.</p>						
<b>8. Division/Group Communication Summary</b>						
Function	Channel	RX Frequency N/W	RX Tone/NAC	TX Frequency N/W	TX Tone/NAC	Mode
TACTICAL	3	168.6000N	123.0	168.6000N	123.0	A
COMMAND	7	171.8250N	123.0	168.4250N	123.0	A
COMMAND	10	169.5375N	123.0	164.7125N	123.0	A
AIR TO GROUND	14	168.2875N		168.2875N		A
<b>9. Prepared By (Resource Unit Leader)</b>			<b>Approved By (Planning Section Chief)</b>		<b>Date</b>	<b>Time</b>
JILL JOHNSON			MARGE HUTCHINSON		10/11/2020	2025

**Division/Group Assignment List (ICS 204 WF)**  
**Controlled Unclassified Information//Basic**

<b>1. Incident Name:</b>			<b>3.</b>			
ARCHIE CREEK			<b>Branch:</b>		<b>Division/Group:</b>	
<b>2. Operational Period: DAY</b>			<b>DFPA W/T/D/E</b>			
Date/Time From: 10/12/2020 0700 MON		Date/Time To: 10/12/2020 1900 MON				
<b>4. Operations Personnel</b>						
<b>OPERATIONS CHIEF</b>				<b>DIVISION/GROUP SUPERVISOR</b>		PAUL RITTER (541) 580-7149
<b>SAFETY OFFICER</b>						
<b>5. Resources Assigned this Period</b>						
Strike Team / Task Force / Resource Designator		LWD	Leader	Number Persons	Drop Off PT./Time	Pick Up PT./Time
ENG T6 #15-01			K. SMITH (541)530-0477	2		
ENG T6 #11-15			T.BABIKOFF (541)671-3363	2		
ENG T6 #89-88			J. BROWN (541)580-5117	2		
<b>6. Control Operations/Work Assignments:</b>						
<ul style="list-style-type: none"> <li>• Monitor and patrol lines</li> <li>• Backhaul equipment no longer needed</li> <li>• Identify and complete needed suppression repair on private lands</li> <li>• Coordinate and communicate with federal resources and IMT</li> </ul>						
<b>7. Special Instructions:</b>						
<b>8. Division/Group Communication Summary</b>						
Function	Channel	RX Frequency N/W	RX Tone/NAC	TX Frequency N/W	TX Tone/NAC	Mode
TACTICAL	6	151.3400N	156.7	151.3400N	156.7	A
COMMAND	11	151.1600N	146.2	159.4725N	146.2	A
AIR TO GROUND	14	168.2875N		168.2875N		A
<b>9. Prepared By (Resource Unit Leader)</b>			<b>Approved By (Planning Section Chief)</b>		<b>Date</b>	<b>Time</b>
JILL JOHNSON			MARGE HUTCHINSON		10/11/2020	2025

**Division/Group Assignment List (ICS 204 WF)**  
**Controlled Unclassified Information//Basic**

<b>1. Incident Name:</b>			<b>3.</b>			
THIELSEN			<b>Branch:</b>		<b>Division/Group:</b>	
<b>2. Operational Period:</b> DAY			<b>THIELSEN</b>		<b>A/M/P/W</b>	
Date/Time From: 10/12/2020 0700 MON		Date/Time To: 10/12/2020 1900 MON				
<b>4. Operations Personnel</b>						
<b>OPERATIONS CHIEF</b>		JEFF BOUSCHOR; TONY ENGEL MATT CASTLE		<b>BRANCH DIRECTOR</b>		AARON ROWE
<b>DIVISION/GROUP SUPERVISOR</b>		CODY ACORD CHRIS WHITE (T)		<b>SAFETY OFFICER</b>		TROY CORN JACK CATES
<b>5. Resources Assigned this Period</b>						
Strike Team / Task Force / Resource Designator	LWD	Leader	Number Persons	Drop Off PT./Time	Pick Up PT./Time	
O-549 SOF1	10/14	IVAN CUPP	1	THIELSEN SPIKE/0700	THIELSEN SPIKE/1900	
O-589.2 SOF2	10/18	TODD CAMM	1	THIELSEN SPIKE/0700	THIELSEN SPIKE/1900	
O-186 TFLD	10/16	LEE MICHAEL NELSON	1	THIELSEN SPIKE/0700	THIELSEN SPIKE/1900	
O-646 TFLD	10/21	MEREDITH CHILDS	1	THIELSEN SPIKE/0700	THIELSEN SPIKE/1900	
O-125 HEQB (T)	10/20	MAX LEIDENFROST	1	THIELSEN SPIKE/0700	THIELSEN SPIKE/1900	
E-247 ENG6 JR WILDFIRE 07	10/22	JAMES RETTSTATT	3	THIELSEN SPIKE/0700	THIELSEN SPIKE/1900	
E-8 DOZ3 BOB MURRAY LOGGING	10/23	GARCIA UNDERWOOD	1	THIELSEN SPIKE/0700	THIELSEN SPIKE/1900	
E-54 EXCA B ROCK READY	10/16	GLEN ROBINSON	1	THIELSEN SPIKE/0700	THIELSEN SPIKE/1900	
E-147 EXCA SCOTT MARSHALL TRUCKING	10/25	SCOTT MARSHALL	1	THIELSEN SPIKE/0700	THIELSEN SPIKE/1900	
E-148 EXCA SHAD STUFFLEBEAM CUTTING	10/25	JOSIAH SCOFIELD	1	THIELSEN SPIKE/0700	THIELSEN SPIKE/1900	
E-335 GRINDER LANE FOREST PRODUCTS	10/14	RAY BREWINGTON	2	THIELSEN SPIKE/0700	THIELSEN SPIKE/1900	
O-6 READ	10/10	JEDIDIAH HANCOCK	1	THIELSEN SPIKE/0700	THIELSEN SPIKE/1900	
O-134 REAF	10/11	SOPHIA KIM	1	THIELSEN SPIKE/0700	THIELSEN SPIKE/1900	
O-191 READ (T)	10/22	DYLAN HOKANSON	1	THIELSEN SPIKE/0700	THIELSEN SPIKE/1900	
O-157 EMTF	10/20	DALE HOOVER	1	THIELSEN SPIKE/0700	THIELSEN SPIKE/1900	
O-175 EMTF	10/15	CAYLA FORSYTHE	1	THIELSEN SPIKE/0700	THIELSEN SPIKE/1900	
E-71 AMBU AMBO 1571	10/12	FRED SIEWERT	1	THIELSEN SPIKE/0700	THIELSEN SPIKE/1900	
<b>8. Division/Group Communication Summary</b>						
Function	Channel	RX Frequency N/W	RX Tone/NAC	TX Frequency N/W	TX Tone/NAC	Mode
COMMAND	1	171.4250N	103.5	166.0000N	192.8	A
COMMAND	11	169.7500N	123.0	167.1000N	123.0	A
TACTICAL	5	168.2625N	103.5	168.2625N	103.5	A
AIR TO GROUND	13	168.2875N		168.2875N		A
<b>9. Prepared By (Resource Unit Leader)</b>		<b>Approved By (Planning Section Chief)</b>		<b>Date</b>	<b>Time</b>	
JILL JOHNSON		MARGE HUTCHINSON		10/11/2020	2025	

**Division/Group Assignment List (ICS 204 WF)**  
**Controlled Unclassified Information//Basic**

<b>1. Incident Name:</b>			<b>3.</b>			
THIELSEN			<b>Branch:</b>  <b>THIELSEN</b>	<b>Division/Group:</b>  <b>A/M/P/W</b>		
<b>2. Operational Period:</b> <b>DAY</b>						
Date/Time From:	MON	Date/Time To:	MON			
10/12/2020 0700		10/12/2020 1900				
<b>4. Operations Personnel</b>						
<b>OPERATIONS CHIEF</b>	JEFF BOUSCHOR; TONY ENGEL MATT CASTLE		<b>BRANCH DIRECTOR</b>	AARON ROWE		
<b>DIVISION/GROUP SUPERVISOR</b>	CODY ACORD CHRIS WHITE (T)		<b>SAFETY OFFICER</b>	TROY CORN JACK CATES		
<b>5. Resources Assigned this Period</b>						
Strike Team / Task Force / Resource Designator	LWD	Leader	Number Persons	Drop Off PT./Time	Pick Up PT./Time	
<b>6. Control Operations/Work Assignments:</b>						
Task: Patrol. Complete suppression repair per repair plan standards.						
Purpose: Continue to protect values and limit resource damage through suppression efforts.						
End State: To eliminate the threat to values at risk.						
<b>7. Special Instructions:</b>						
<b>8. Division/Group Communication Summary</b>						
Function	Channel	RX Frequency N/W	RX Tone/NAC	TX Frequency N/W	TX Tone/NAC	Mode
COMMAND	1	171.4250N	103.5	166.0000N	192.8	A
COMMAND	11	169.7500N	123.0	167.1000N	123.0	A
TACTICAL	5	168.2625N	103.5	168.2625N	103.5	A
AIR TO GROUND	13	168.2875N		168.2875N		A
<b>9. Prepared By (Resource Unit Leader)</b>		<b>Approved By (Planning Section Chief)</b>		<b>Date</b>	<b>Time</b>	
JILL JOHNSON		MARGE HUTCHINSON		10/11/2020	2025	



**Division/Group Assignment List (ICS 204 WF)**  
**Controlled Unclassified Information//Basic**

<b>1. Incident Name:</b>				<b>3.</b>		
THIELSEN				<b>Branch:</b>  <b>THIELSEN</b>	<b>Division/Group:</b>  <b>NORTH DIAMOND</b>	
<b>2. Operational Period: DAY</b>						
Date/Time From: 10/12/2020 0700 MON		Date/Time To: 10/12/2020 1900 MON				
<b>4. Operations Personnel</b>						
<b>OPERATIONS CHIEF</b>		JEFF BOUSCHOR; TONY ENGEL MATT CASTLE		<b>BRANCH DIRECTOR</b>		AARON ROWE
<b>DIVISION/GROUP SUPERVISOR</b>		RICHARD TINGLE (R&R 10/13-10/14) JEFF PRICHER		<b>SAFETY OFFICER</b>		TROY CORN JACK CATES
<b>5. Resources Assigned this Period</b>						
Strike Team / Task Force / Resource Designator	LWD	Leader	Number Persons	Drop Off PT./Time	Pick Up PT./Time	
O-549 SOF1	10/14	IVAN CUPP	1	THIELSEN SPIKE/0700	THIELSEN SPIKE/1900	
O-589.2 SOF2	10/18	TODD CAMM	1	THIELSEN SPIKE/0700	THIELSEN SPIKE/1900	
O-187 TFLD	10/16	JED GETMAN	1	THIELSEN SPIKE/0700	THIELSEN SPIKE/1900	
O-673 TFLD	10/24	JASON WICKIZER	1	THIELSEN SPIKE/0700	THIELSEN SPIKE/1900	
O-188 HEQB (T)	10/16	SARAH LEE	1	THIELSEN SPIKE/0700	THIELSEN SPIKE/1900	
O-79 FMOD GOODSON LOGGING	10/18	NATHANIEL ZELLER	2	THIELSEN SPIKE/0700	THIELSEN SPIKE/1900	
E-9000 ENG3 UMPQUA 334	10/13	TOMMY DAVIS	8	THIELSEN SPIKE/0700	THIELSEN SPIKE/1900	
E-1 WTS2 LEE ROY BELLOIR & SONS	10/17	ROSS BELLOIR	1	THIELSEN SPIKE/0700	THIELSEN SPIKE/1900	
E-2 WTS2 SCOTT MARSHALL TRUCKING	10/13	JEREMIAH DIERDORF	1	THIELSEN SPIKE/0700	THIELSEN SPIKE/1900	
E-97 WTT2 ALL WET WATER TRUCKING	10/20	RICK BASSONETT	1	THIELSEN SPIKE/0700	THIELSEN SPIKE/1900	
E-35 DOZ3 PJF INC	10/13	AARON FENTER	2	THIELSEN SPIKE/0700	THIELSEN SPIKE/1900	
E-149 DOZ1 MARK JONES TRUCKING	10/14	KEEGAN COOPER	1	THIELSEN SPIKE/0700	THIELSEN SPIKE/1900	
E-29 EXCA DENNY POTTER LOGGING	10/18	DENNY POTTER	2	THIELSEN SPIKE/0700	THIELSEN SPIKE/1900	
E-144 EXCA FS 1990	10/15	(USE AS NEEDED)	2	THIELSEN SPIKE/0700	THIELSEN SPIKE/1900	
E-171 EXCA MID VALLEY RANCH			2	THIELSEN SPIKE/0700	THIELSEN SPIKE/1900	
E-314 EXCA TABLE MOUNTAIN FORESTRY	10/14	RYAN MINER	2	THIELSEN SPIKE/0700	THIELSEN SPIKE/1900	
E-315 EXCA TABLE ROCK FORESTRY	10/24	MARK CUMMINGS; RON ROWDY	2	THIELSEN SPIKE/0700	THIELSEN SPIKE/1900	
E-362 EXCA MARK JONES TRUCKING	10/15	DARYLE STUBBFIELD	2	THIELSEN SPIKE/0700	THIELSEN SPIKE/1900	
<b>8. Division/Group Communication Summary</b>						
Function	Channel	RX Frequency N/W	RX Tone/NAC	TX Frequency N/W	TX Tone/NAC	Mode
COMMAND	1	171.4250N	103.5	166.0000N	192.8	A
TACTICAL	4	169.1250N	103.5	169.1250N	103.5	A
COMMAND	11	169.7500N	123.0	167.1000N	123.0	A
AIR TO GROUND	13	168.2875N		168.2875N		A
<b>9. Prepared By (Resource Unit Leader)</b>			<b>Approved By (Planning Section Chief)</b>		<b>Date</b>	<b>Time</b>
JILL JOHNSON			MARGE HUTCHINSON		10/11/2020	2025

**Division/Group Assignment List (ICS 204 WF)**  
**Controlled Unclassified Information//Basic**

<b>1. Incident Name:</b>				<b>3.</b>		
THIELSEN				<b>Branch:</b>  <b>THIELSEN</b>	<b>Division/Group:</b>  <b>NORTH DIAMOND</b>	
<b>2. Operational Period: DAY</b>						
Date/Time From: 10/12/2020 0700      MON		Date/Time To: 10/12/2020 1900      MON				
<b>4. Operations Personnel</b>						
<b>OPERATIONS CHIEF</b>		JEFF BOUSCHOR; TONY ENGEL MATT CASTLE		<b>BRANCH DIRECTOR</b>		AARON ROWE
<b>DIVISION/GROUP SUPERVISOR</b>		RICHARD TINGLE (R&R 10/13-10/14) JEFF PRICHER		<b>SAFETY OFFICER</b>		TROY CORN JACK CATES
<b>5. Resources Assigned this Period</b>						
Strike Team / Task Force / Resource Designator	LWD	Leader	Number Persons	Drop Off PT./Time	Pick Up PT./Time	
E-44 FEL2 RUDE LOGGING/ FEL2	10/16	STEVE KOWING	2	THIELSEN SPIKE/0700	THIELSEN SPIKE/1900	
E-45 FEL1 MARK JONES TRUCKING INC	10/12		2	THIELSEN SPIKE/0700	THIELSEN SPIKE/1900	
E-156 FEL1 RUDE LOGGING	10/15	SHAWN SKIDGEL	1	THIELSEN SPIKE/0700	THIELSEN SPIKE/1900	
E-132 TUB GRINDER LANE FORESTRY	10/12	JOE TURNEY	1	THIELSEN SPIKE/0700	THIELSEN SPIKE/1900	
E-109 SKD1 MARK JONES TRUCKING	10/23	CASEY HUNTLEY	2	THIELSEN SPIKE/0700	THIELSEN SPIKE/1900	
E-151 SKD2 DAMON LOGGING	10/24	DAN KOMNING	2	THIELSEN SPIKE/0700	THIELSEN SPIKE/1900	
E-152 SKD2 MID VALLEY RANCH	10/14	BRAD HELLENTHAL	2	THIELSEN SPIKE/0700	THIELSEN SPIKE/1900	
E-145 LDFR FS 6304		(STAFF AS NEEDED)		THIELSEN SPIKE/0700	THIELSEN SPIKE/1900	
E-153 LDFR LANE FOREST PRODUCTS	10/14	DARREL BOOTS	1	THIELSEN SPIKE/0700	THIELSEN SPIKE/1900	
E-42 LOG SELF LOADER MARK JONES	10/22	WILLIAM HOOVER	1	THIELSEN SPIKE/0700	THIELSEN SPIKE/1900	
E-172 LOG SELF LOADER ROGUE RV FIRE	10/24	JIM HUTTEMA	1	THIELSEN SPIKE/0700	THIELSEN SPIKE/1900	
E-138 TDMP FS 2943	10/13	JUSTIN GUNN	1	THIELSEN SPIKE/0700	THIELSEN SPIKE/1900	
E-139 TDMP FS 4018	10/13	RYAN NORTON	1	THIELSEN SPIKE/0700	THIELSEN SPIKE/1900	
E-140 TDMP FS 6303		(STAFF AS NEEDED)	1	THIELSEN SPIKE/0700	THIELSEN SPIKE/1900	
E-154 TDMP DEAN INNOVATIONS,	10/14	NICK ROPKINS	1	THIELSEN SPIKE/0700	THIELSEN SPIKE/1900	
E-155 TDMP DEAN INNOVATIONS	10/14	BRANDEN ROBERTS	1	THIELSEN SPIKE/0700	THIELSEN SPIKE/1900	
E-160 TDMP DUMP TRUCK FS 2996	10/15	PARISH	1	THIELSEN SPIKE/0700	THIELSEN SPIKE/1900	
E-161 TDMP DUMP TRUCK FS 6017	10/15	JOSH MARR	1	THIELSEN SPIKE/0700	THIELSEN SPIKE/1900	
E-162 TDMP DUMP TRUCK FS 7040	10/15	ALLAN SANFORD	1	THIELSEN SPIKE/0700	THIELSEN SPIKE/1900	
<b>8. Division/Group Communication Summary</b>						
Function	Channel	RX Frequency N/W	RX Tone/NAC	TX Frequency N/W	TX Tone/NAC	Mode
COMMAND	1	171.4250N	103.5	166.0000N	192.8	A
TACTICAL	4	169.1250N	103.5	169.1250N	103.5	A
COMMAND	11	169.7500N	123.0	167.1000N	123.0	A
AIR TO GROUND	13	168.2875N		168.2875N		A
<b>9. Prepared By (Resource Unit Leader)</b>			<b>Approved By (Planning Section Chief)</b>		<b>Date</b>	<b>Time</b>
JILL JOHNSON			MARGE HUTCHINSON		10/11/2020	2025

**Division/Group Assignment List (ICS 204 WF)**  
**Controlled Unclassified Information//Basic**

<b>1. Incident Name:</b>			<b>3.</b>			
THIELSEN			<b>Branch:</b>		<b>Division/Group:</b>	
<b>2. Operational Period:</b> DAY			<b>THIELSEN</b>		<b>NORTH DIAMOND</b>	
Date/Time From: 10/12/2020 0700 MON		Date/Time To: 10/12/2020 1900 MON				
<b>4. Operations Personnel</b>						
<b>OPERATIONS CHIEF</b>		JEFF BOUSCHOR; TONY ENGEL MATT CASTLE		<b>BRANCH DIRECTOR</b>		AARON ROWE
<b>DIVISION/GROUP SUPERVISOR</b>		RICHARD TINGLE (R&R 10/13-10/14) JEFF PRICHER		<b>SAFETY OFFICER</b>		TROY CORN JACK CATES
<b>5. Resources Assigned this Period</b>						
Strike Team / Task Force / Resource Designator		LWD	Leader	Number Persons	Drop Off PT./Time	Pick Up PT./Time
E-163 TDMP DUMP TRUCK FS 7320		10/15	STOVER	1	THIELSEN SPIKE/0700	THIELSEN SPIKE/1900
E-141 TCTL FS 4020 TILT BED TRANSPORT			(STAFF AS NEEDED)	1	THIELSEN SPIKE/0700	THIELSEN SPIKE/1900
E-143 GRD GRADER FS 6302			(STAFF AS NEEDED)	1	THIELSEN SPIKE/0700	THIELSEN SPIKE/1900
O-149 REAF (T)		10/13	ERIC MICHAEL HELEBRANT	1	THIELSEN SPIKE/0700	THIELSEN SPIKE/1900
E-72 AMBU MED TRANSPORT		10/13	CHRIS ARVIDSON	2	THIELSEN SPIKE/0700	THIELSEN SPIKE/1900
<b>6. Control Operations/Work Assignments:</b>						
Task: Remove all Danger Trees within 150ft of road. Improve ingress and egress from the 005 to Hwy 138. Deck merchantable logs. Tub Grind non-merch and spread chips. Purpose: Protect life and property from fire weakened trees. End State: Trees are removed from roadways to create future contingency lines for Diamond Lake Community.						
<b>7. Special Instructions:</b>						
O-19 TFLD Brian Smith will R&R on 10/11 - 10/12, returning to the Division on 10/13. O-18 HEQB Michael Karr will R&R on 10/12-13, returning to Division on 10/14.						
<b>8. Division/Group Communication Summary</b>						
Function	Channel	RX Frequency N/W	RX Tone/NAC	TX Frequency N/W	TX Tone/NAC	Mode
COMMAND	1	171.4250N	103.5	166.0000N	192.8	A
TACTICAL	4	169.1250N	103.5	169.1250N	103.5	A
COMMAND	11	169.7500N	123.0	167.1000N	123.0	A
AIR TO GROUND	13	168.2875N		168.2875N		A
<b>9. Prepared By (Resource Unit Leader)</b>			<b>Approved By (Planning Section Chief)</b>		<b>Date</b>	<b>Time</b>
JILL JOHNSON			MARGE HUTCHINSON		10/11/2020	2025

# INCIDENT RADIO COMMUNICATIONS PLAN (ICS 205)

Controlled Unclassified Information//Basic

<b>1. Incident Name:</b>	<b>2. Date/Time Prepared:</b>	<b>3. Operational Period: DAY</b>	
ARCHIE CREEK	Date: 10/11/2020 Time: 2025	Date/Time From: 10/12/2020 0700 MON	Date/Time To: 10/12/2020 1900 MON

**4. Basic Radio Channel Use:**

Zone Group	Ch #	Function	Channel Name/Trunked Radio System Talkgroup	Assignment	RX Freq	RX Tone/NAC	TX Freq	TX Tone/NAC	Mode (A,D, or M)	Remarks
AC	1	TACTICAL	TAC 1	DIV A / R / S	168.0500N	123.0	168.0500N	123.0	A	TAC 1
AC	2	TACTICAL	TAC 2	DIV F / H / K	168.2000N	123.0	168.2000N	123.0	A	TAC 2
AC	3	TACTICAL	TAC 3	WRIGHT CREEK	168.6000N	123.0	168.6000N	123.0	A	TAC 3
AC	4	TACTICAL	TAC 4		166.7250N	123.0	166.7250N	123.0	A	RESERVED
AC	5	TACTICAL	TAC 5	DIV N/Q	166.7750N	123.0	166.7750N	123.0	A	TAC 5
AC	6	TACTICAL	RED NET	DFPA DIV W/T/D/E	151.3400N	156.7	151.3400N	156.7	A	DFPA RED NET
AC	7	COMMAND	CMD 7	DIV A, WRIGHT CRK	171.8250N	123.0	168.4250N	123.0	A	SCOTT MOUNTAIN
AC	8	COMMAND	CMD 8	DIV H/K, N/Q	173.5000N	123.0	168.5625N	123.0	A	TWIN LAKES
AC	9	COMMAND	CMD 9	DIV N/Q, R/S, W/T/D/E	170.4500N	123.0	168.1000N	123.0	A	RED BUTTE
AC	10	COMMAND	CMD 10	DIV F, H/K, WRIGHT CREEK	169.5375N	123.0	164.7125N	123.0	A	CHILCOOT MOUNTAIN
AC	11	COMMAND	DFPA RPT	DIV W/T/D/E	151.1600N		159.4275N	146.2	A	DFPA SIMULCAST REPEATER
AC	12	COMMAND	ROD LANE		170.0250N		166.3000N	107.2	A	BLM LANE MTN REPEATER
AC	13	COMMAND	CHILCOOT	DIV F, H/K	170.5500N	103.5	164.8000N	192.8	A	FS CHILCOOT REPEATER
AC	14	AIR TO GROUND	A/G 50	ALL	168.2875N		168.2875N		A	A/G PRIMARY UPF
AC	15	AIR TO GROUND	ODF A/G	ALL	151.3100N		151.3100N	156.7	A	ODF IA WHITE NET
AC	16	AIR GUARD	AIRGUARD	ALL	168.6250N		168.6250N	110.9	A	AIRGUARD

**5. Special Instructions: Zone or Group on the Radio is labeled 10/12/2020**

<b>6. Prepared By</b> (Communications Unit Leader)	Name: MISSY PARKER	Signature: <i>Missy Parker</i>
ICS 205	IAP Page	Date/Time: 10/11/2020 2025

# INCIDENT RADIO COMMUNICATIONS PLAN (ICS 205)

Controlled Unclassified Information//Basic

<b>1. Incident Name:</b>	<b>2. Date/Time Prepared:</b>	<b>3. Operational Period: DAY</b>	
THIELSEN	Date: 10/11/2020 Time: 2025	Date/Time From: 10/12/2020 0700 MON	Date/Time To: 10/12/2020 1900 MON

**4. Basic Radio Channel Use:**

Zone Group	Ch #	Function	Channel Name/Trunked Radio System Talkgroup	Assignment	RX Freq	RX Tone/NAC	TX Freq	TX Tone/NAC	Mode (A,D, or M)	Remarks
	1	COMMAND	CIMMAMON	UMPQUA NF CINNAMON BUTTE	171.4250N	103.5	166.0000N	192.8	A	DIV A/M, P/W, NORTH DIAMOND
	2	COMMAND	PIG IRON	UMPQUA NF PIG IRON RPTR	171.4250N	103.5	166.0000N	179.9	A	DIV P/W
	3	COMMAND	E DOEHD	UMPQUA NF DOE HEAD RPTR	171.4250N	103.5	166.0000N	186.2	A	
	4	TACTICAL	NURD PROJ	NURD/RRF PROJECT	169.1250N	103.5	169.1250N	103.5	A	NORTH DIAMOND
	5	TACTICAL	DLRD PROJ	DIAMOND LAKE RD PROJECT	168.2625N	103.5	168.2625N	103.5	A	DIV A/M/P/W
	6	TACTICAL	CG/T PRJ	COTTAGE GROVE/TILLER	167.3750N	103.5	167.3750N	103.5	A	
	7	COMMAND	WNF WALK	WINEMA NF WALKER RPTR	170.5250N	103.5	162.7500N	141.3	A	
	8	COMMAND	RRFHersh	ROUGE RIVER NF HERSHBERGER	169.5750N	67.0	164.8750N	67.0	A	
	9	COMMAND	CHILCOOT	FA CHILCOOT REPEATER	170.5500N	103.5	164.8000N	192.8	A	
	10	COMMAND	INTEROP	DOUGLAS CO. INTEROP	152.6600N	151.4	157.8600N	110.9	A	
	11	COMMAND	CMD 11	THIELSEN BASE CAMP	169.7500N	123.0	167.1000N	123.0	A	ALL DIVISIONS
	12	COMMAND	CRATR LK	CRATER LAKE NP WATCHMEN	170.1000N	110.9	166.2375N	110.9	A	
	13	AIR TO GROUND	A/G 50	ALL	168.2875N		168.2875N		A	A/G PRIMARY- UMPQUA NF
	14	AIR TO GROUND	ODF A/G	ALL	151.3100N		151.3100N	156.7	A	ODF A/G IA - WHITE NET
	15	TACTICAL	VMED 28	INCIDENT MEDVAC	153.3400N		153.3400N		A	** MEDIVAC **
	16	AIR GUARD	AIR GUARD	AIR GUARD	168.6250N		168.6250N	110.9	A	ALL DIVISIONS

**5. Special Instructions: Zone or Group on the Radio is labeled THIELSEN**

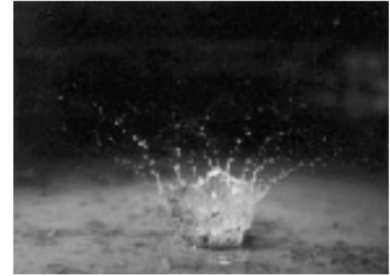
<b>6. Prepared By</b> (Communications Unit Leader)	Name: MISSY PARKER	Signature: <i>Missy Parker</i>
ICS 205	IAP Page	Date/Time: 10/11/2020 2025

# The Power of the Humble Raindrop

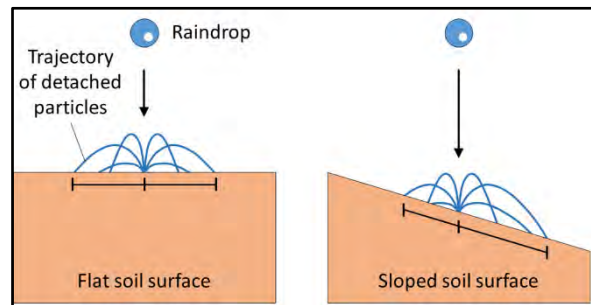
---

Erosion starts with a single raindrop.

Individual raindrops can travel at speeds up to 20 miles per hour. When raindrops strike soil directly, without any plant cover or woody debris to intercept the drop's kinetic energy, soil particles can splash up to five feet horizontally and two feet in the air. This is known as splash erosion.



The volume of soil material detached by raindrop splash is determined by raindrop diameter (larger drops are heavier and have more kinetic energy), median grain size of the soil, and slope. A sloped surface will result in more soil particles splashing downhill, and these particles will move at higher velocities.



Eventually the soil may become saturated and water will start to flow over the soil surface as sheet flow. Soil loosened by the action of splash erosion may then be moved off site by sheet erosion. As water moves downhill, it may concentrate and form rills and eventually gullies.

**Much of what we do during Suppression Repair are actions to mitigate future erosion events on suppression lines. Pulling coarse woody debris onto suppression lines and mulching with straw and hay help intercept the kinetic energy of raindrops. Seeding native species provides soil cover in future years and stabilizes the soil through root development. Waterbars help intercept and diffuse sheet flow before it can lead to rilling.**

*Thank you for your help with this important work!*



*Fun fact: The total energy for 30 inches of annual precipitation occurring over 1 square mile is equivalent to the energy of 8,256 tons of TNT.*

## Archie Creek and Thielsen Danger Tree Felling Specifications

For the safety of firefighters ingress and egress to patrol and manage suppression response work on the Archie Creek Fire dead and dying trees along the identified priority roads need to be felled and removed (in some cases). The following is a draft prescription of the danger tree mitigation treatment:

- All dead trees along the prioritized roads that are at risk to hit the road need to be felled consistent with the [Region 6 Danger Tree Identification document](#). Additionally, any trees with combinations of scorched and live crowns need to be evaluated by a person certified in danger tree identification for potential felling utilizing the criteria established in [Smith and Cluck \(2011\)](#).
- Do not cut live green trees with intact crowns.
- For tree removal, any danger tree that is felled and hits the road should be limbed and decked. Most limbs that break off within 40-75 ft of the edge of the road prism should be piled or chipped on uphill slopes adjacent to the roads.
- On steep slopes above the road, fell all danger trees within 1 ½ tree lengths. On steep slopes, where professional judgement identifies a likelihood that a tree will slide onto the road, consider removing the tree and all limbs within 40-75 ft of the road. If the tree cannot be safely pulled to the road, consider contour falling where appropriate and safe.
- For slash created by fallen trees, pile along roadsides in consultation with READs.
- Only yard trees to the road outside of riparian areas or areas where removal could cause slope erosion concerns.
- For Incense and Western Red Cedar with green needles, evaluate root scorch, if 50% or greater, consider felling for safety in consultation with READs.
- For slopes below the road, only fall dead trees that have the potential to hit the road. Only remove such trees if they hit the road and can be removed without causing resource damage.
- If for safety reasons, an area cannot be treated with danger tree felling operations, please map the area, and share it with the lead Resource Advisor for mapping purposes.

### Slash Specifications

- Remove slash created by danger tree felling within 40' of edge of the road.
- Where possible, prefer to haul and chip slash rather than piling.
- Where not possible to haul, chipping into stands is preferred before piling. Don't chip to a depth greater than one foot. Where possible, shoot chips to the downhill side of the road.
- Where not possible, pile slash alongside roads in coordination with READs to avoid sensitive areas and culverts.
- When building slash piles, size is not a concern, but ensure they are at a sufficient distance from live trees to avoid killing the trees when the pile is burned.
- Cover all piles with plastic sufficiently to allow for the interior of pile to remain dry over winter.

# Weed Wash!!



The weed wash stations are still up and running! The objective, is to complete suppression repair and minimize damage to the natural resources. Thank you for your continued vigilance in helping us achieve that objective!

## **BOTH FIRES HAVE A WEED WASH.**

- **Archie Creek Weed Wash location. (not at the ICP)**

Directions: Take 138 West into Glide, make a right (North) just West of the Glide Community Center (about 0.8 miles from Archie ICP). You'll see signs at the entrance. This is also the new Staging Area.

- **Thielsen Weed Wash location is at DP-3.**

PLEASE wash your vehicles during the following situations:

- **Prior to demob...DO NOT take our weeds home with you!**
- **Whenever logistically possible, wash equipment/vehicles prior to moving from the BLM/Private checkerboard to Forest Service- administered lands.**

**\*\*If you are just arriving to the Archie Creek or Thielsen Fire, take all vehicles through the weed wash before entering the fire areas.\*\***

To review, please wash your vehicle / equipment upon:

1. Initial mobilization into camp;
2. Final demobilization;
3. Moving from BLM to FS;
4. As often as possible!

\*Federal agencies and private industry spend thousands of dollars a year in the fight against noxious weeds as they spread from the valleys (or other infested areas) into un-infested Public Lands and plantations. Prevention is by far the most effective proactive weapon we have; it saves taxpayer dollars, and all it takes is a little extra time.



# DEMOB INSTRUCTIONS

In the COVID-19 environment we are limiting direct contact where possible including within the demob process.

As such, much of the process will be completed via cellphone. Please wear a face covering during any in person interaction.

## **Demob steps for all resources (must be done in order):**

1. Any resources that were off pavement must go through **weed wash**. Location @ Thielsen Fire = Diamond Lake Camp. Location @ Archie Creek Fire = ICP.
2. Check out with **Ground Support** at either camp.
3. Turn in any radios to the **Communications Unit** and checked out supplies to the **Supply Unit** at either camp.
4. Call **Demob Unit** @ 541-887-0815
5. Call **Finance** @ 509-949-3210 or 360-601-8820
6. Scan this QR code and review the information on COVID.



If you follow this process you will be made available in the ordering system faster for your next assignment.

Any questions about the process please contact the Demob Unit at 541-887-0815.

Thank you and safe travels!

**Tentative Demob List**  
**Archie Creek Fire - October 12, 2020**

**EQUIPMENT**

E-253	0730	(STK)	ARCHER MOUNTAIN
E-53	0745	(STK)	TRANSPORTATION - STAKESIDE
E-336	0830	(EXCA)	JUSTIN PITTS TRUCKING, INC.
E-316	0900	(EXCA)	SANTUCCI RANCH TURF LLC

**OVERHEAD**

O-328	0715	(EMPF)	CORPORATE MEDICAL SERVICES
O-589.27	0800	(MEDL)	RYAN, EAMONN FRANCIS

**Tuesday, October 13, 2020**

**EQUIPMENT**

E-341		(SKD1)	MARK JONES TRUCKING
-------	--	--------	---------------------

**OVERHEAD**

E-341		(SKD1)	MARK JONES TRUCKING
O-535		(DRIV)	PATTERSON, RALPH
O-524		(TFLD)	ANDERSON, ERIC JOHN

**Tentative Demob List**  
**Thielsen Fire - October 12, 2020**

**OVERHEAD**

O-96	0700	(HEQB)	LINDSAY, JAMES A
O-134	0815	(REAF)	KIM, SOPHIA

**Tuesday, October 13, 2020**

**EQUIPMENT**

E-2		(WTS2)	SCOTT MARSHALL TRUCKING
E-132		(CHIP)	LANE FOREST PRODUCTS, INC

**OVERHEAD**

O-149		(REAF)	HELEBRANT, ERIC MICHAEL
-------	--	--------	-------------------------

## COVID Mitigated Check In Process....


*With the many changes due to COVID, efforts are being made to keep our resources (you!) safe by social distancing. Although our process has changed, we are still here for you... The Team is attempting to make the check-in process as easy as possible, however the need to rely on technology can be a challenge at times. If at any time you run into issues or have questions, please call the assisted check-in desk at **425-324-1367** between **0600 - 2100**.*

### The Process:

#### Step 1: Ground Support Inspection

- **Non-Agency Resources Only** (includes contract crews, equipment and overhead) need to report to Ground Support at Archie Creek ICP for inspection prior to engaging in the incident.

#### Step 2: Fill out the Virtual Check-In Form (Use the option below that works best for you)

- Option 1: Use your smart phone or tablet to Scan the QR code. In most cases, your phone camera will successfully scan the code and take you to the virtual form. 
- Option 2: Open your internet browser (from your phone, tablet or computer) and type the following in the address bar <https://bit.ly/2SHj9bD>
- Option 3: For on-site check in, please call 425-324-1367 – an iPad can be provided for you to complete the Check-In process.
- Option 4: If you can't complete any of the above methods of accessing the form or for any check-in issues, please call 425-324-1367.

#### Step 3: Provide Supplemental Check-In Information (either email or text documents)

- Please provide the following documents:
  - **Crews** – crew manifest with vehicle information, red cards
  - **Equipment** – crew manifest (if information is not provided in check-in form), red/blue card(s)
  - **Overhead** –red card
- Methods to provide documents:
  - Email documents to [2020.archiecreek.resources@firenet.gov](mailto:2020.archiecreek.resources@firenet.gov)
  - Text documents to 425-324-1367

#### Step 4: Determine Your Reporting Location

- **Fireline resources** – pick up an IAP from Check-in, then call Matt in Operations at 509-630-8033.
- **Other resources** - if you're unsure where to report, call Check-In for assistance at 425-324-1367.

## Human Resource Message – Archie Creek / Thielsen Fires October 12, 2020



### **"DO WHAT'S RIGHT"**

As a reminder to everyone, inappropriate behavior can distract incident personnel which could cause an accident. Do what is right, be professional, and lead by example. Be mindful of your actions and your behavior and treat others with respect.

Each of us must take the responsibility for our conduct, our speech, and our dress to provide for a positive work environment.

Drug or alcohol abuse resulting in unfitness for duty is a major safety concern and there is zero tolerance for possessing, selling, distributing or personally using any intoxicating beverage or any narcotic drug or hallucinogen while on official duty; or while transporting fire personnel. It is your responsibility to abide by agency and incident conduct regulations.

At the end of the day, we want everyone to come home safely with a sense of a job **well done**. **With your continued professionalism and "can do" attitude, we can achieve that goal and ensure a positive work environment for all incident personnel.**



**Susie Manezes, Human Resource Specialist PNW Team 12 – Contact: 602-571-9327**  
**Located at the Incident Command Post (ICP) Glide, OR. [smanezes@blm.gov](mailto:smanezes@blm.gov)**

Mutual Respect...You Make the Difference



# ARCHIE CREEK / THIELSEN CONTACT LIST

## **FINANCE**

**2020.archiecreek.finance@firenet.gov**

## **DMOB**

**2020.archiecreek.DMOB@firenet.gov**

## **SITUATION UNIT**

**2020.archiecreek.situation@firenet.gov**

## **PLANS**

**2020.archiecreek.plans@firenet.gov**

## **LOGISTICS**

**All orders (ICS-213) need to be submitted electronically to:**

**2020.archiecreek.ordering@firenet.gov**

## **INFORMATION**

**2020.archiecreek@firenet.gov**

**NOTE: These email addresses are used for both Thielsen and Archie Creek Fires.**

# Archie Creek Fire & Thielsen Fire Training Message

*In order to receive formal credit for your training assignment from this incident—  
you must close out with the Training Specialist before you Demob!*



*TNSP Hours:*

6-9am by appointment only

3-8pm daily

Erika L. Davis ~ (850) 841-0038 ~ [Erika.Davis@USDA.GOV](mailto:Erika.Davis@USDA.GOV)

---

## TRAINING CLOSE-OUT PROCEDURES

<https://tinyurl.com/y54ufg3v>



- Initiate Close-out via QR code
- Send completed Performance Evaluation(s), Evaluation Record(s), Final Evaluators Verification (if applicable)

## LOGISTICS INFORMATION



**Archie Creek Kitchen**  
**Breakfast: 0600-0830**  
**Dinner: 1800-2100**

**Thielsen Spike Kitchen**  
**Breakfast: 0600-0900**  
**Dinner: 1600-2200**



**Archie Creek Showers**  
**Opens: 0500**  
**Closed: 1200-1400**  
**Closed: 2200**

**Thielsen Spike**  
**Opens: 0600**  
**Closed: 1200-1600**  
**Closed: 2200**

**For COVID mitigation, please reduce the numbers of individuals coming to the kitchen window. Send representatives to collect meals for groups.**

# FINANCE

Communications for Finance should be sent to

**[2020.Thielsen.finance@firenet.gov](mailto:2020.Thielsen.finance@firenet.gov)**

**[2020.Archiecreek.finance@firenet.gov](mailto:2020.Archiecreek.finance@firenet.gov)**

If you have a need to file a claim – don't wait till you are demobbing

**Call us now!!!!**

Demobbing tomorrow? Make sure all your CTRs or Shift tickets are turned in.



Archie Creek

FINANCE SECTION OFFICE ADDRESS:

BLM Cache  
2300 NW Aviation Drive  
Roseburg, OR 97470



Thielsen

### ***Contact Information:***

Equipment Time: Christina Goebel – 509-670-5889

Personnel Time: Carol Long – 509-433-1115

Procurement: Mark Bohnet – 509-531-7418

Compensation & Claims: Barb Haxby – 360-601-8820

Finance Section Chief: Cheri Fuller – 509-949-3210

Deputy Finance Section Chief: Barb Haxby – 360-601-8820

ICPI: Rob Hechinger – 509-675-5821



To comply with COMD-19 mitigations, only personnel assigned and working within the ICP are allowed within the IMT Area

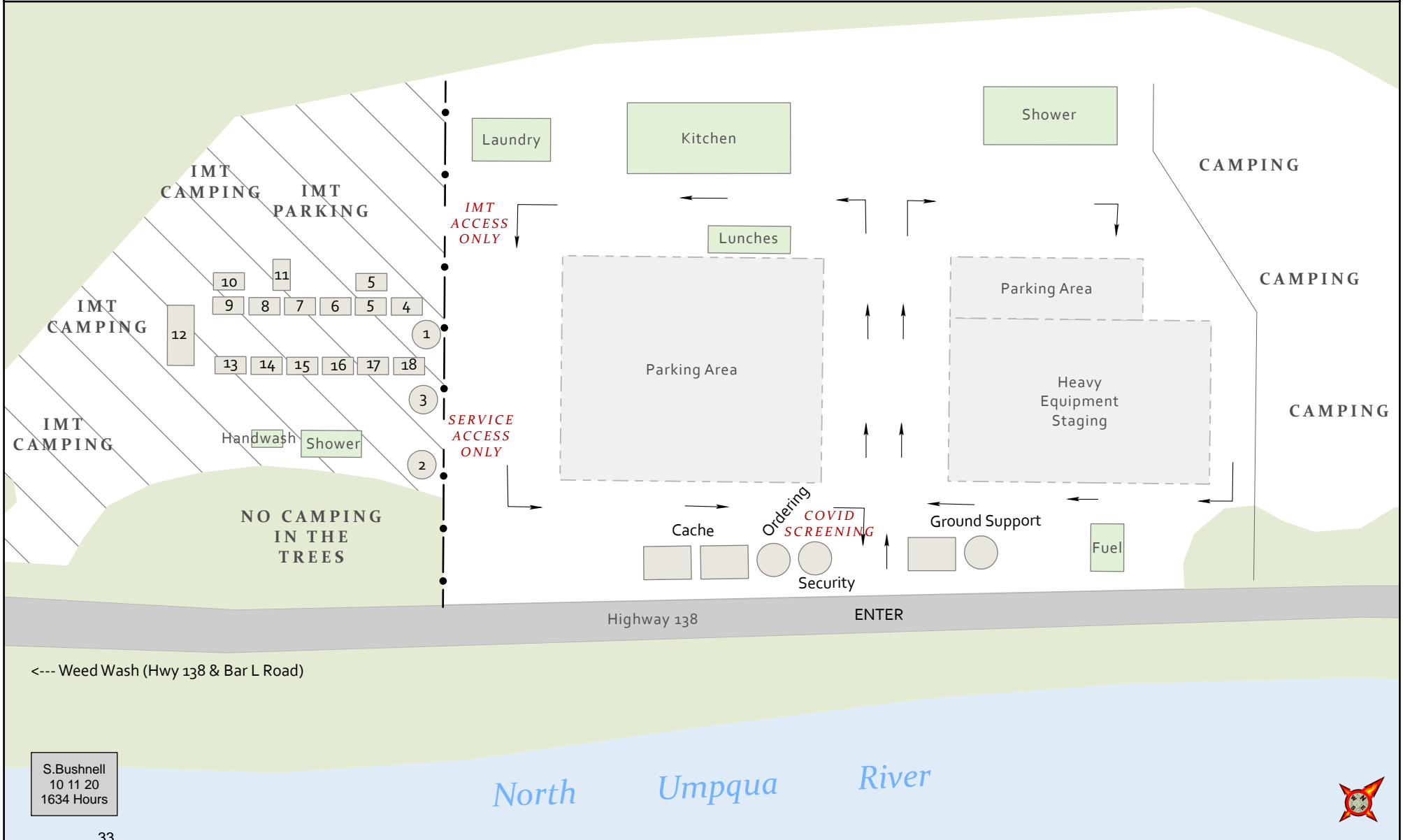
Access to Check-in / Demob and the Medical Unit are in place

IMT Personnel should keep contact with the Base Camp Area to a minimum

- |                        |                    |                         |
|------------------------|--------------------|-------------------------|
| 1 - Check-in / Demob   | 8 - Plans          | 15 - Documentation      |
| 2 - Cooperator Meeting | 9 - Situation      | 16 - LOGS               |
| 3 - READ               | 10 - GS            | 17 - Finance            |
| 4 - Medical Unit       | 11 - Copy Service  | 18 - Public Information |
| 5 - Communications     | 12 - Large Meeting |                         |
| 6 - Small Mtg          | 13 - IC            |                         |
| 7 - Safety / OPS       | 14 - HR            |                         |

**Archie Creek  
OR-UPF-000436  
Strader Ranch ICP**

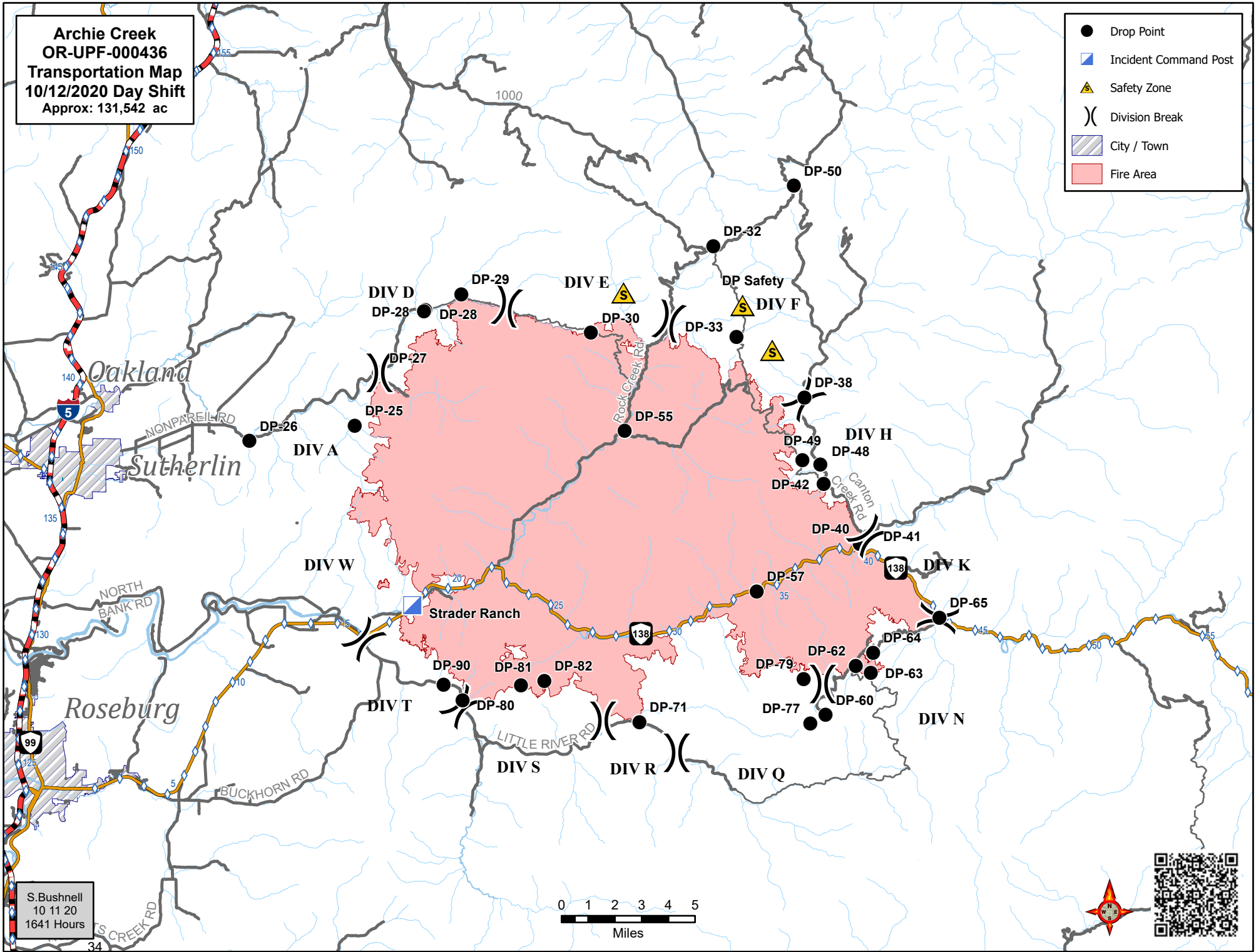
 IMT Area



S. Bushnell  
10 11 20  
1634 Hours

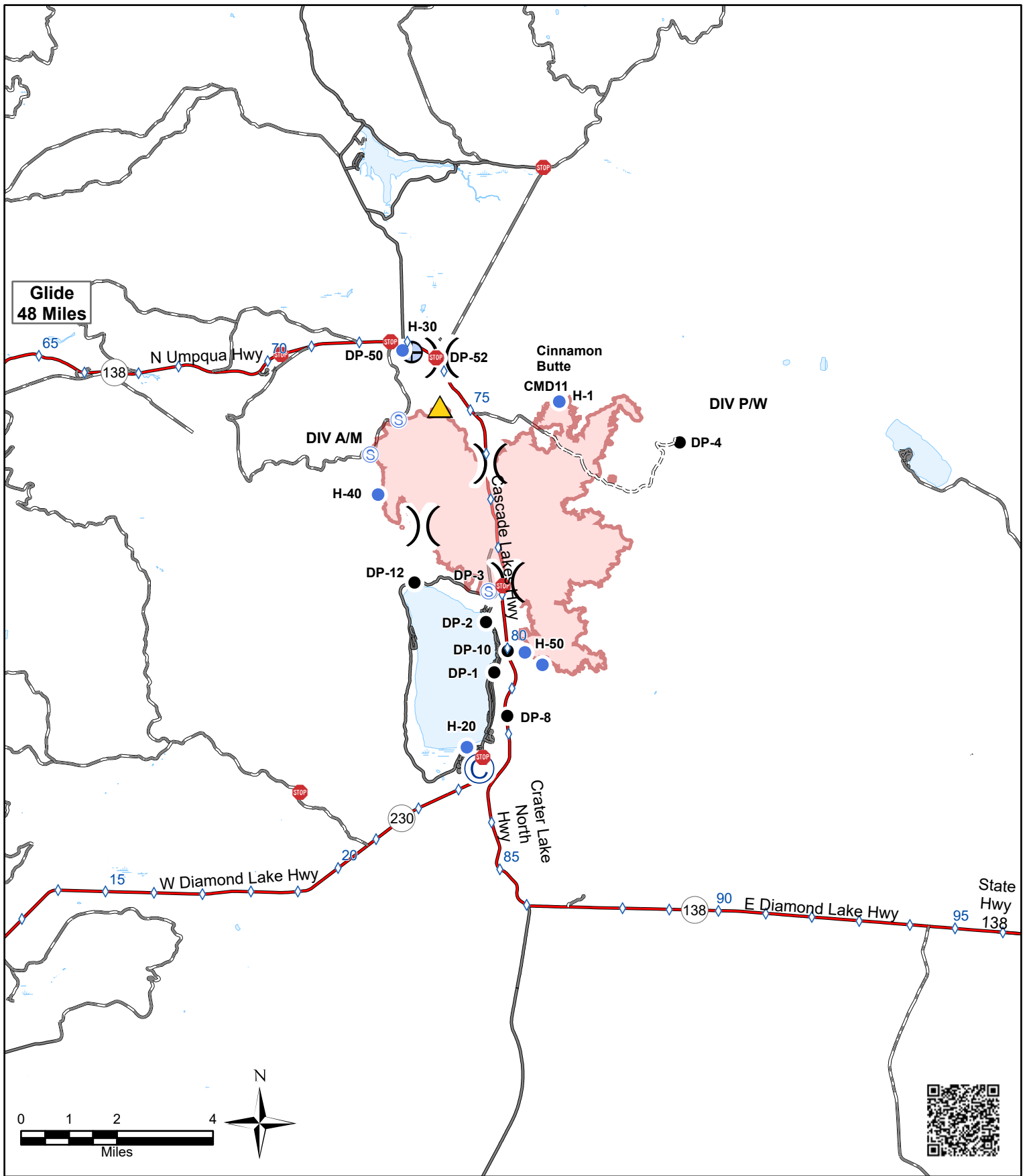
**Archie Creek  
OR-UPF-000436  
Transportation Map  
10/12/2020 Day Shift  
Approx: 131,542 ac**











- Drop Point
- ▣ Incident Command Post
- ▲ Safety Zone
- ) ( Division Break
- ▨ City / Town
- Fire Area



S. Bushnell  
10 11 20  
1641 Hours





-  Checkpoint
-  Helispot
-  Camp
-  Safety Zone
-  Drop Point
-  Staging Area
-  Water Development or Draft Site
-  Division Break
-  Wildfire Daily Fire Perimeter
-  Mileposts

**Thielsen**  
**OR-UPF-000441**  
**IAP Transportation Map**  
**10/12/2020 Day Shift**

Created by: B Kirk  
 Date Created: 10/11/2020 7:52 PM

# Incident Maps

Maps are not included in the IAP document due to size and page count. For detailed Operations, Transportation and other maps, scan the QR code (or click the link below it) for your fire:



[Archie Creek](#) (click to open)



[Thielsen](#) (click to open)

## Send Map Updates

Send map updates by email to the Situation Unit email address for your fire:

Archie Creek: [2020.archiecreek.situation@firenet.gov](mailto:2020.archiecreek.situation@firenet.gov)

Thielsen: [2020.thielsen.situation@firenet.gov](mailto:2020.thielsen.situation@firenet.gov)

Alternately, text/call the Situation Unit at 360-584-3373. Make sure to include your name, position and explanation of the update you send.

### How to correctly send data from Avenza:

1. Open the map in Avenza.
2. Click the pin with three lines near the lower-right corner.
3. *iPhone*: In the lower right, click the square with up arrow. From the pop-up menu, choose Export to Others.  
*Android*: In the lower right, click the circle with three lines. Click the pop-up circle with up arrow.
4. Set these options:
  - a. Filename – leave alone
  - b. Export Format – choose SHP, GPX or KML
  - c. Data – all features
  - d. Image size – no image
5. Click the Export button in the upper-right corner.
6. When the export is ready, choose your Mail application.
7. Send the email to the address for your fire.
8. Your email needs to include your name and position
9. Your email needs to include an explanation of the data you are sending.

## **REQUIRED BY ALL PERSONNEL: COVID-19 DAILY CHECKLIST**

**Supervisors are required to go over this list each morning with assigned resources. Please make a notation in the remarks section on your daily Crew Time Report documenting your daily health assessment check.**

### **Self-Awareness / Screening**

- Notify supervisor if you or others experience:
  - Fever or chills
  - Cough
  - Shortness of breath or difficulty breathing
  - Fatigue
  - Muscle or body aches
  - Headache
  - New loss of taste or smell
  - Sore throat
  - Congestion or runny nose
  - Nausea or vomiting
  - Diarrhea
- Have you had close contact within the last 14-days with someone who is currently sick with confirmed COVID-19? (Note: Close contact is defined as within 6 feet for more than 15 minutes per CDC Guidelines)
- Review and follow crew and division plans to isolate, triage, and transport symptomatic personnel: Contact line EMT or COVID Module personnel for next steps.
- Masks must be worn at all times in base camp, spike camp and ICP.
- Modules (e.g. crews, engines) should send representatives to pick up meals for the entire group: 1 person for engine crews, 3-4 people for 20 person crews.
- Join morning briefing via phone (number provided in IAP)
- Observe 6-foot social distancing during briefings and while standing in line for meals, and any other time you are near people outside of your module.
- Limit contact between firefighters and the public as much as possible, use crew representatives to pick up supplies, fuel, etc.

**WEAR YOUR MASK  
WASH YOUR HANDS  
WATCH YOUR DISTANCE**



# **IN-CAMP EMERGENCY MEDICAL PROCEDURE**

## **Archie Creek**

**ICP/Base Camp**

- 1. Stay with Patient**
- 2. YELL for HELP**
- 3. Send someone to Communications or Call:**

**24 hours 206-450-6582**

**Communications will start the appropriate medical response**

---

## **Thielsen**

**Spike Camp**

- 1. Stay with Patient**
- 2. YELL for HELP**
- 3. Call Lee Venning to start appropriate medical response:**

**24 hours 417-459-5759**

## EMERGENCY PLAN

### INCIDENT WITHIN AN INCIDENT

#### ON SCENE SUPERVISOR

**In the event of an accident or medical incident of any size, your primary responsibility is to ENSURE that the victim(s) receive prompt and effective Triage, Treatment and Transportation.**

- Conduct size-up of the incident (nature of accident, number type of resources involved, latitude and longitude location); notify incident communications center and supervisor, request assistance as needed.
- Order and coordinate medical and support response to the accident.
- Evaluate special needs (law enforcement, haz mat, etc.).
- Clear the command frequency if medical emergency; coordinate with incident communications and air attack for air medical transportation needs
- Preserve and photograph the scene for accident investigation.
- Remain aware of surroundings and the status of the main incident (delegate personnel to monitor the main fire) to ensure safety of medical treatment personnel.
- Until relieved, supervise and manage all personnel involved at the incident scene.
- **ENSURE THE MEDICAL INCIDENT REPORT IN THE INCIDENT ACTION PLAN IS BEING USED AND FOLLOWED.**



# MEDICAL PLAN (ICS 206 WF)

1. Incident/Project Name		2. Operational Period						
<b>Archie Creek</b>		Date/Time 10/12/2020 0700-1900						
3. Ambulance Services								
Name	Complete Address	Phone	Advanced Life Support (ALS)					
			Yes	No				
Douglas County Fire District #2	4200 Carnes Rd Roseburg, OR 97471	Dispatch 541-440-4471 or 911	x					
Glide Rural Fire Protection	18910 N. Umpqua Hwy Glide, OR 97443	Dispatch 541-440-4471 or 911		x				
4. Air Ambulance Services								
Name	Phone	Type of Aircraft & Capability						
Reach Helicopter Service	800-338-4045	EC-135 Night Capability (Roseburg)						
Life Flight / Airlink	800-232-0911	EC-135 Night Capability						
Forest Service Short Haul	541-957-3253	Located in Sunriver, OR (35 min)						
5. Hospitals								
Name Complete Address	GPS Datum – WGS 84 Coordinate Standard Degrees Decimal Minutes DD° MM.MMM' N - Lat DD° MM.MMM' W - Long		Travel Time From ICP		Phone	Helipad		Level of Care Facility
	Lat:	Long:	Air	Gnd		Yes	No	
Legacy Emmanuel Medical 3001 N Gantenbein Ave. Portland, OR 97202	45° 32.688 N	122° 40.293 W	1 Hr 30 Min	3 Hr 10 Min	(888) 598-4232	X		Level 1 Trauma & Burn Center
Mercy Medical 2700 NW Stewart Pkwy. Roseburg, OR 97471	43° 14.57 N	123° 21.99 W	20 Min	40 Min	541-677-4333	X		Level 3 Trauma
Sacred Heart Medical Center 3333 Riverbend Dr. Springfield, OR 97477	44° 04.87 N	123° 01.58 W	35 Min	1 Hr 10 Min	541-222-6929	X		Level 2 Trauma
6. Division   Branch   Group		Capability	Personnel					
<b>A/R/S</b>		Medic 3 (E-175)						
<b>F/H/K</b>								
<b>N/Q</b>		Medic 1 (E-29), Medic 5 (E-291), Douglas County REMS (0-382)						
<b>Wright Creek</b>		EMPF Bennet (0-496), BTE REMS (0-430), Medic 4 (E-286)						
7. Prepared By (Medical Unit Leader)		8. Date/Time	9. Reviewed By (Safety Officer)		10. Date/Time			
Bonnie Gibbons <i>Bonnie Gibbons</i>		10/11/2020 1900	Troy Corn <i>Troy Corn</i>		10/11/2020 1900			

# MEDICAL PLAN (ICS 206 WF)

<b>1. Incident/Project Name</b>		<b>2. Operational Period</b>			
<b>Thielsen</b>		Date/Time <b>10/12/2020 0700-1900</b>			
<b>3. Ambulance Services</b>					
<b>Name</b>	<b>Complete Address</b>	<b>Phone</b>		<b>Advanced Life Support (ALS)</b> Yes No	
Chemult Fire Protection	109800 US 97 Chemult, OR 97731	Dispatch 541-290-2172 or 911		x	
Crescent Fire and Ambulance	136727 Main Street Crescent, OR 97733	Dispatch 541-433-2466 or 911		x	
<b>4. Air Ambulance Services</b>					
<b>Name</b>	<b>Phone</b>	<b>Type of Aircraft &amp; Capability</b>			
Mercy Flight	800-903-9000	Bell 407, Night Capability			
Life Flight / Airlink	800-232-0911	EC-135 Night Capability			
Forest Service Short Haul	541-957-3253	Located in Sunriver, OR (35min)			
<b>5. Hospitals</b>					
<b>Name</b> <b>Complete Address</b>	<b>GPS Datum – WGS 84</b> <b>Coordinate Standard</b> <b>Degrees Decimal Minutes</b> <b>DD° MM.MMM' N - Lat</b> <b>DD° MM.MMM' W - Long</b>	<b>Travel Time</b> <b>From ICP</b> <b>Air Gnd</b>		<b>Phone</b>	<b>Helipad</b> Yes No
<b>Legacy Emmanuel Medical</b> 3001 N Gantenbein Ave. Portland, OR 97202	<b>Lat:</b> 45° 32.688 N	<b>1 Hr</b> <b>30</b> <b>Min</b>	<b>3 Hr</b> <b>10</b> <b>Min</b>	(888) 598-4232	X
	<b>Long:</b> 122° 40.293 W				
	<b>VHF:</b> 155.340				
<b>St. Charles</b> 2500 Neff Road Bend, OR 97701	<b>Lat:</b> 44° 3.4904 N	<b>40</b> <b>Min</b>	<b>1 Hr</b> <b>10</b> <b>Min</b>	541-706-4550 (ER)	X
	<b>Long:</b> 121° 18.9185 W				
	<b>VHF:</b> 155.340				
<b>Sacred Heart Medical Center</b> 3333 Riverbend Dr. Springfield, OR 97477	<b>Lat:</b> 44° 04.87 N	<b>35</b> <b>Min</b>	<b>1 Hr</b> <b>10</b> <b>Min</b>	541-222-6929	X
	<b>Long:</b> 123° 01.58 W				
	<b>VHF:</b> 155.340				
<b>6. Division   Branch   Group</b>		<b>Capability</b>		<b>Personnel</b>	
<b>N. Diamond</b>		Med transport Ambulance (E-72)			
<b>A/M/P/W</b>		Chemult Ambulance (E-71), EMT Hoover (O-157), EMT Forsythe (O-175),			
<b>7. Prepared By (Medical Unit Leader)</b>		<b>8. Date/Time</b>	<b>9. Reviewed By (Safety Officer)</b>		<b>10. Date/Time</b>
<b>Bonnie Gibbons</b> <i>Bonnie Gibbons</i>		<b>10/11/2020</b> <b>1900</b>	<b>Troy Corn</b> <i>Troy Corn</i>		<b>10/11/2020</b> <b>1900</b>

# MEDICAL PLAN (ICS 206 WF)

Controlled Unclassified Information//Basic

## Medical Incident Report

**FOR A NON-EMERGENCY INCIDENT, WORK THROUGH CHAIN OF COMMAND TO REPORT AND TRANSPORT INJURED PERSONNEL AS NECESSARY.**

**FOR A MEDICAL EMERGENCY: IDENTIFY ON SCENE INCIDENT COMMANDER BY NAME AND POSITION AND ANNOUNCE "MEDICAL EMERGENCY" TO INITIATE RESPONSE FROM IMT COMMUNICATIONS/DISPATCH.**

Use the following items to communicate situation to communications/dispatch.

1. CONTACT COMMUNICATIONS / DISPATCH (**Verify correct frequency prior to starting report**)

*Ex: "Communications, Div. Alpha. Stand-by for Emergency Traffic."*

2. INCIDENT STATUS: *Provide incident summary (including number of patients) and command structure.*

*Ex: "Communications, I have a Red priority patient, unconscious, struck by a falling tree. Requesting air ambulance to Forest Road 1 at (Lat./Long.) This will be the Trout Meadow Medical, IC is TFLD Jones. EMT Smith is providing medical care."*

Severity of Emergency / Transport Priority	<input type="checkbox"/> RED / PRIORITY 1 Life or limb threatening injury or illness. Evacuation need is IMMEDIATE <i>Ex: Unconscious, difficulty breathing, bleeding severely, 2° – 3° burns more than 4 palm sizes, heat stroke, disoriented.</i> <input type="checkbox"/> YELLOW / PRIORITY 2 Serious Injury or illness. Evacuation may be DELAYED if necessary. <i>Ex: Significant trauma, unable to walk, 2° – 3° burns not more than 1-3 palm sizes.</i> <input type="checkbox"/> GREEN / PRIORITY 3 Minor Injury or illness. Non-Emergency transport <i>Ex: Sprains, strains, minor heat-related illness.</i>	
Nature of Injury or Illness & Mechanism of Injury		<i>Brief Summary of Injury or Illness (Ex: Unconscious, Struck by Falling Tree)</i>
Transport Request		<i>Air Ambulance / Short Haul/Hoist Ground Ambulance / Other</i>
Patient Location		<i>Descriptive Location &amp; Lat. / Long. (WGS84)</i>
Incident Name		<i>Geographic Name + "Medical" (Ex: Trout Meadow Medical)</i>
On-Scene Incident Commander		<i>Name of on-scene IC of Incident within an Incident (Ex: TFLD Jones)</i>
Patient Care		<i>Name of Care Provider (Ex: EMT Smith)</i>

3. INITIAL PATIENT ASSESSMENT: *Complete this section for each patient as applicable (start with the most severe patient)*

Patient Assessment: See IRPG page 106

Treatment:

4. TRANSPORT PLAN:

Evacuation Location (if different): *(Descriptive Location (drop point, intersection, etc.) or Lat. / Long.)* Patient's ETA to Evacuation Location:

Helispot / Extraction Site Size and Hazards:

5. ADDITIONAL RESOURCES / EQUIPMENT NEEDS:

*Example: Paramedic/EMT, Crews, Immobilization Devices, AED, Oxygen, Trauma Bag, IV/Fluid(s), Splints, Rope rescue, Wheeled litter, HAZMAT, Extrication*

6. COMMUNICATIONS: Identify State Air/Ground EMS Frequencies and Hospital Contacts as applicable

Function	Channel Name/Number	Receive (RX)	Tone/NAC *	Transmit (TX)	Tone/NAC *
COMMAND					
AIR-TO-GRND					
TACTICAL					

7. CONTINGENCY: **Considerations:** *If primary options fail, what actions can be implemented in conjunction with primary evacuation method? Be thinking ahead.*

8. ADDITIONAL INFORMATION: *Updates/Changes, etc.*

**REMEMBER:** Confirm ETA's of resources ordered. Act according to your level of training. Be Alert. Keep Calm. Think Clearly. Act Decisively.

Controlled Unclassified Information//Basic