

Incident Action Plan

Archie Creek / Thielsen Fires

October 17-18, 2020 0700-1800 Operational Period

MORNING BRIEFING @ 0700

Phone: 1-888-609-7602

Participant Number: 7544830#

-ALL PERSONNEL-

MUTE your phone when you call in to Briefing

Archie Creek
OR-UPF-000436

P6NKL8 (0615)
221 IWO

Thielsen
OR-UPF-000441

P6NKN621 (0615)

NORTHWEST INCIDENT MANAGEMENT TEAM



This is the last IAP for NW Team 12...

**THANK YOU FOR
WORKING WITH
OUR TEAM!**

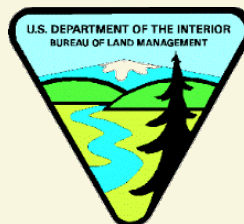
DOWNLOAD MAPS



Archie
Creek



Thielsen




IAP

INCIDENT OBJECTIVES (ICS 202)

1. Incident Name:	2. Operational Period: DAY
ARCHIE CREEK / THIELSEN	Date/Time: 10/17/2020 0700 - 1800 SAT and 10/18/2020 0700 - 1800 SUN
3. Objective(s):	
Provide for the safety of all responders and public at all times.	
Protect communities, critical infrastructure, timber values, recreation sites and natural resource values.	
Implement Covid-19 prevention and mitigation procedures as outlined by the CDC and the Geographic Wildfire Response Plan.	
Implement strategies and tactics that commit responders only to operations and tasks that will have a high probability of success with the least exposure necessary.	
Coordinate suppression repair tasks with Resource Advisors and implement in a manner that will minimize impacts to protected cultural and aquatic resources.	
4. Operational Period Command Emphasis:	
Manage span of control with assigned resources and develop organization for transition on 10/18/2020.	
General Situational Awareness:	
Monitor the weather, scout work area for hazards and adjust your work assignment based on conditions.	
5. Site Safety Plan Required? Yes <input type="checkbox"/> No <input checked="" type="checkbox"/>	
Approved Site Safety Plan(s) Located at:	
6. Incident Action Plan (the items checked below are included in this Incident Action Plan):	
<input checked="" type="checkbox"/> ICS 202 <input checked="" type="checkbox"/> ICS 203 <input checked="" type="checkbox"/> ICS 204 <input checked="" type="checkbox"/> ICS 205 <input type="checkbox"/> ICS 205A <input checked="" type="checkbox"/> ICS 206	<input type="checkbox"/> ICS 207 <input type="checkbox"/> ICS 208 <input checked="" type="checkbox"/> ICS 220 <input type="checkbox"/> Map/Chart <input checked="" type="checkbox"/> Weather Forecast/Tides/Currents
Other Attachments: <input checked="" type="checkbox"/> SAFETY MESSAGE <input checked="" type="checkbox"/> HUMAN RESOURCE MSG <input checked="" type="checkbox"/> COVID PRECAUTIONS & SCREENING TOOL <input checked="" type="checkbox"/> UNIT LOG	
7. Prepared by: MARGE HUTCHINSON	Position/Title: PSC2
8. Approved by Incident Commander:	Name: JEFF DIMKE
ICS 202	IAP Page
Signature: <i>Marge Hutchinson</i>	Signature: <i>Jeff Dimke</i>
Date/Time: 10/16/2020 1010	

ORGANIZATION ASSIGNMENT LIST (ICS 203)

1. Incident Name:		2. Operational Period: DAY	
ARCHIE CREEK / THIELSEN		Date/Time: 10/17/2020 0700 - 1800 SAT and 10/18/2020 0700 - 1800 SUN	
3. Incident Commander(s) and Command Staff:			
INCIDENT COMMANDER	BOBBY SHINDELAR	SUPPLY UNIT	JOHN KAUPA
DEPUTY	JEFF DIMKE	MEDICAL UNIT	BONNIE GIBBONS LEE VENNING (T)
SAFETY OFFICER	TROY CORN JACK CATES	SECURITY UNIT	KEVIN REISH
INFORMATION OFFICER	MARY BEAN ROLAND EMETAZ	FOOD UNIT	JOHN SHACKELFORD
LIAISON OFFICER	SCOTT CRAWFORD	7. Operations Section:	
HUMAN RESOURCE SPECIALIST	SUSIE MANEZES	OPERATION SECTION CHIEF	JEFF BOUSCHOR
COVID COORDINATOR	LIV STECKER	PLANNING OPS	TONY ENGEL
4. Agency/Organization Representative(s):			
Agency/Organization	Name	DIVISION/GROUP	ARCHIE CK - A/R/S
UMPQUA NF - AA	ALICE CARLTON		LARRY LEACH
UMPQUA NF - AREP	SHERRI CHAMBERS	DIVISION/GROUP	ARCHIE CK - F/H/K
BLM - AA	HEATHER WHITMAN		MATT KENNEDY
BLM - AREP	CHRIS FOSTER	DIVISION/GROUP	ARCHIE CK - N/Q
BLM - RESOURCE ADVISOR	JEFF MCENROE		MICHAEL JACKSON
USFS - RESOURCE ADVISOR	JOSH CHAPMAN JED HANCOCK	DIVISION/GROUP	ARCHIE CK - WRIGHT CREEK
		BRANCH DIRECTOR	AARON ROWE
		DIVISION/GROUP	THIELSEN - NORTH DIAMOND
			CODY ACORD; RICHARD TINGLE CHRIS WHITE (T)
		DIVISION/GROUP	THIELSEN - A/M/P/W
			CODY ACORD CHRIS WHITE (T)
5. Planning Section:			
CHIEF	MARGE HUTCHINSON HOWARD JOHNSON (VIRTUAL)	7b. Air Operations Branch:	
DEPUTY	ERIC BLACK	AIR OPS BRANCH DIRECTOR	
RESOURCES UNIT	JILL JOHNSON	AIR ATTACK SUPERVISOR	
SITUATION UNIT		AIR SUPPORT SUPERVISOR	
DOCUMENTATION UNIT	JEFF DEARDORFF		
DEMOBILIZATION UNIT	NATHAN JEFFRIES (VIRTUAL)	8. Finance/Administration Section:	
FIRE BEHAVIOR ANALYST	DON STRAND	CHIEF	CHERI FULLER
TRAINING SPECIALIST	ERIKA DAVIS	DEPUTY	BARB HAXBY
GIS SPECIALIST	SHAWN BUSHNELL; BOB KIRK	TIME UNIT	CAROL LONG
TECHNOLOGY SUPPORT SPECIALIST	GEORGE JENKINS DAVID JOHNSON	PROCUREMENT UNIT	MARK BOHNET
INCIDENT METEOROLOGIST	BOB TOBIN (VIRTUAL)	COST UNIT	STEVE CROW
		ICPI	ROB HECHINGER
6. Logistics Section:			
CHIEF	PETER FITZMAURICE		
DEPUTY			
FACILITIES UNIT	KEVIN HAUGHTON		
GROUND SUPPORT UNIT	MARK ANDERSON		
COMMUNICATIONS	MISSY PARKER		
9. Prepared By:	Name: JILL JOHNSON	Position/Title: RESL	Signature: 
ICS 203	IAP Page	Date/Time: 10/16/2020 2015	

FIRE WEATHER FORECAST

FORECAST NO: 38
SHIFT DATE: Saturday, Oct 17-18, 2020
PREDICTION FOR: 0700-1800
UNIT: OR- Umpqua NF
TIME AND DATE
FORECAST ISSUED: 2000 hrs. 10/16/20

INCIDENT NAME: Archie Creek/Thielsen
Incident Meteorologist – Bob Tobin
SIGNED: *Bob Tobin*

WEATHER DISCUSSION: High pressure is sitting out in the eastern Pacific through next week. This puts the Pacific Northwest in a general northwest flow. Several weather systems will move through the region. The first system will move through Saturday morning and bring increasing clouds to the region. The second Sunday afternoon will bring a few light showers that are expected to remain north of the area. More light rain will be possible at times through next week. Easterly winds on Friday will become northwest to north the remainder of the weekend. This will result in slightly cooler temperatures and higher relative humidity.

SKY/WEATHER TODAY: Mostly cloudy in the morning. Clearing in the afternoon.

MAX TEMPERATURES / MIN RELATIVE HUMIDITY:

3000 FT: (Archie Creek) 62 to 67 degrees (Down 3-5) / 40 to 45 (Up 5%)

5000 FT: (Thielsen) 60 to 65 degrees (Down 3-5) / 35 to 40 (Up 5%)

20 FOOT WINDS:

Slope/Valley: West-northwest 8-10 mph.

Ridges: West-northwest 10-12 mph.

LAL: 1.

Inversion: Moderate at 400 ft AGL.

Chc of Wetting Rain (> or = to 0.25"): 0%

Afternoon Mixing Height: 3300 ft AGL.

SKY/WEATHER TONIGHT: Partly to mostly cloudy.

MIN TEMPERATURES / MAX RELATIVE HUMIDITY

3000 FT: (Archie Creek) 45 to 50 degrees (Up 2 to 3) / 55 to 65% (Little change%)

5000 FT: (Thielsen) 33 to 38 degrees (Up 1 to 2) / 65 to 75% (Up 10-15%)

20 FOOT WINDS:

Slope/Valley: Northwest-north 5-8 mph.

Ridges: Northwest 5-10 mph.

LAL: 1.

Chc of Wetting Rain (> OR = to 0.25"): 0%

SKY/WEATHER SUNDAY Partly cloudy in the morning...becoming mostly cloudy.

MAX TEMPERATURES / MIN RELATIVE HUMIDITY:

3000 FT: (Archie Creek) 58 to 62 degrees (Down 3-5) / 50 to 55 (Up 5-10%)

5000 FT: (Thielsen) 52 to 57 degrees (Down 3-5) / 55 to 60 (Up 10-15%)

20 FOOT WINDS:

Slope/Valley: West 5-7 mph.

Ridges: West 8-12 mph.

LAL: 1.

Chc of Wetting Rain (> or = to 0.25"): 0%

3-5 Day Outlook, Mon-Wed (3000 Feet): High pressure remains anchored in the eastern Pacific through the week.

Monday: Mostly cloudy. **High Temp:** 50-60 **Min RH:** 50-60%. **Wind:** NW 8-12 mph.

Tuesday: Partly cloudy. **High Temp:** 60-65 **Min RH:** 50-60%. **Wind:** NW 8-12 mph.

Wednesday: Mostly sunny. **High Temp:** 50-60 **Min RH:** 45-55%. **Wind:** NW 8-10 mph.

Observations from midnight through 1700 PDT Friday, 10/16/20:

North Bank (1913ft): Temps 45F/66F, RH: 100%/58%, Pk Wind: ESE 7g12 mph.

Little River IRAWS (2100ft): Temps 44F/70F, RH: 97/53%, Pk Wind: SW 7g12 mph.

Grandad (2900ft): Temps: 46F/72F, RH: 82%/37%, Pk Wind: SW 3g4 mph.

Lookout Mtn PRAWS (4739ft): Temps: 49/72, 57%/29%, Pk Wind: ENE 2g3 mph.

Cinnamon⁴(4834ft): Temps: 38F/73F, 93%/31%, Pk Wind: NW 5g14 mph.

FIRE BEHAVIOR FORECAST

FORECAST NUMBER: 37	TYPE OF FIRE: Wildland
FIRE NAME: Archie Creek / Thielsen	OPERATIONAL PERIODS: Oct. 17-18 2020 0700-1800
DATE ISSUED: October 16, 2020	TIME ISSUED: 2000 Hours
UNIT: Umpqua NF	SIGNED: ____ Don Strand _____
Typed/printed:	

INPUTS

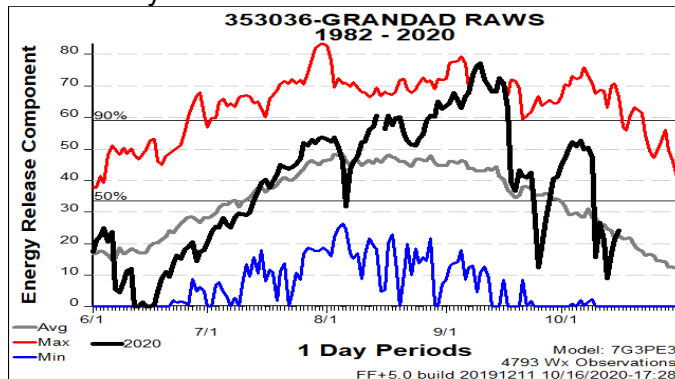
WEATHER SUMMARY: See attached forecast

OUTPUTS

FIRE BEHAVIOR

GENERAL: Continued moderate weather with temps near or slightly above average for this time of year. Fuel moistures continue to slowly drop with 1-hr and 10-hr becoming receptive to ignition for a few hours in the afternoon. Still expect minimal smoldering fire behavior due to the effects of recent precipitation. Larger logs, snags, stumps and woody debris (mega chunks) will continue to smolder with occasional small open flame. There may be a few more smokes visible during the afternoon.

Archie Creek: Forecasted 1-hour fuel moistures minimums will be near 8% and 10- hour fuels near 8%, 1000-hour fuel moistures near 21%. ERC-G values yesterday were 23 and forecasted to be 24 today. Trend is a little higher for Sunday. ERC chart for yesterday at Grandad RAWs – located several miles NE of Archie Creek Fire. ERC's are about average for this time of year.



Thielsen: Forecasted 1-hour fuels moistures 6%, 10-hour fuels moistures will approach 11%, 1000-hour fuel moistures will be near 22%. ERC-G values yesterday were 20 and forecasted to be near 20 today. Trend is for a little higher on Sunday.

Safety

While doing fire suppression repair, continue to watch for trees and snags burning at their base while traveling through or working in or adjacent to the black. These snags can burn until they fall, posing a serious hazard to folks below.

Safety Message

17-18 October 2020

INCIDENT: Archie Creek/Thielsen

OPERATIONAL PERIOD: 0700-1800

TOPICS:

COOL NIGHTS/WEATHER

The weather has moderated for the duration of our tour. However, we can expect cool nights with lows near 40. Make sure you have the means to stay warm through demobe. Now is not the time to compromise your immune system with deep Fall/early Winter right around the corner.

HEAVY EQUIPMENT

Post lookouts around equipment work areas. Establish communications with equipment boss and operator. Do not work down slope from equipment. Familiarize crews with specialty equipment and processes.

DRIVING/TRANSPORTATION

Practice defensive driving skills and maintain time and distance from other vehicles and visual obstructions such as curves and blind spots. Be aware of debris fall and logs along the right-of-way. Keep your speeds low and take your time.

“Complacency is the handmaiden of serious injury.”

“Don’t forget your COVID protocols and mitigations”

SAFETY OFFICER: Troy Corn, Jack Cates

Deliberate Risk Assessment-Hazard Summary 17-18 October 2020

Hazard	Mitigation	Post Risk
COVID Viral Transmission	Maintain awareness of health, perform self-checks, maintain social distancing, wear face covering when within social distancing space (minimum 6'), report and isolate if not feeling well, implement Module of One and Hub/Spoke criteria to greatest extent possible, establish relationship with local public health, establish a schedule to clean all frequently touched surfaces, maintain cleanliness of own workspace, box meals by crew (no more than 20), single person distribution for meals and hydration (24 hour supply of hydration each day supplied with breakfast)	Low
Extraction Time	Identify medivac sites and helispots. Initiate ground transport to accident site. Identify EMT's from resources assigned to division. Provide line qualified paramedics to each division as available. Review IWI protocol to ensure familiarity. Utilize short haul in remote areas. Evaluate on-going need for repositioning medical personnel.	High
Steep Terrain/Gravity	Do not work crews above or below each other. Post lookouts for rolling material. Watch footing in loose soil, rock and around vegetation. Do not work below heavy equipment. Scout and identify travel routes. Establish LCES.	Moderate
Physical Factors	Maintain hydration schedule. Closely monitor work rate and implement rest periods. Maintain nutrition. Ensure adequate work/rest.	Moderate
Environmental Factors	Assign medical personnel to camp. Assess for known allergies and report to medical personnel. Obtain Bee Bopper/wasp spray and yellow jacket traps. Locate dumpsters/trash, food and feeding areas away from sleeping and assembly areas. Establish work windows during periods of heavy rainfall and/or cold weather conditions. Evaluate transportation routes for washout and debris fall potential and establish MAP for disengagement.	Moderate
Snags/Falling	Conduct on-going risk analysis of all work areas. Use mechanized falling to the greatest extent possible. Avoid use of agency personnel for hand falling. Follow Hazard Tree Safety Guidelines (IRPG page 22). Ensure use of protective equipment. Use qualified personnel for danger tree identification.	High
Transportation	Signing of all incident roads that provide access to divisions. Daily updated travel plan maps. In local communities obey the posted speed limits. Use reader boards to control entry as needed. Identify and evaluate contingency and alternate escape and travel routes, implement controls as needed. Practice defensive driving. Maintain an awareness of wildlife, rock fall and heavy truck traffic. Reduce speed and increase following distance as needed.	High
Public Interaction	Implement road and area closures in and adjacent to the perimeter.	Moderate
Heavy Equipment	Post lookouts around equipment work areas. Establish communications with equipment boss and operator. Do not work down slope from equipment. Familiarize crews with specialty equipment and processes.	High

Division/Group Assignment List (ICS 204 WF)
Controlled Unclassified Information//Basic

1. Incident Name:			3.			
ARCHIE CREEK			Branch:		Division/Group:	
2. Operational Period: DAY			A/R/S			
Date/Time: 10/17/2020 0700-1800 SAT		Date/Time: 10/18/2020 0700-1800 SUN				
4. Operations Personnel						
OPERATIONS CHIEF		JEFF BOUSCHOR; TONY ENGEL		DIVISION/GROUP SUPERVISOR		LARRY LEACH
AIR ATTACK SUPERVISOR				SAFETY OFFICER		TROY CORN JACK CATES
5. Resources Assigned this Period						
Strike Team / Task Force / Resource Designator		LWD	Leader	Number Persons	Drop Off PT./Time	Pick Up PT./Time
O-10003 READ (BLM)		10/31	JEFFREY MCENROE	1	ARCHIE CK ICP/0700	ARCHIE CK ICP/1800
6. Control Operations/Work Assignments:						
Task: Patrol.						
Purpose: Protect values and limit resource damage.						
End State: Incident is no longer a threat to improvements and timber values.						
7. Special Instructions:						
See ICS 205 Communications Plan for the current day.						
8. Division/Group Communication Summary						
Function	Channel	RX Frequency N/W	RX Tone/NAC	TX Frequency N/W	TX Tone/NAC	Mode
COMMAND						
TACTICAL						
LOGISTICS						
AIR TO GROUND						
9. Prepared By (Resource Unit Leader)			Approved By (Planning Section Chief)		Date	Time
JILL JOHNSON			MARGE HUTCHINSON		10/16/2020	2010

Division/Group Assignment List (ICS 204 WF)
Controlled Unclassified Information//Basic

1. Incident Name:			3.			
ARCHIE CREEK			Branch:		Division/Group:	
2. Operational Period: DAY					F/H/K	
Date/Time: 10/17/2020 0700-1800 SAT		Date/Time: 10/18/2020 0700-1800 SUN				
4. Operations Personnel						
OPERATIONS CHIEF		JEFF BOUSCHOR; TONY ENGEL		DIVISION/GROUP SUPERVISOR		MATT KENNEDY
AIR ATTACK SUPERVISOR				SAFETY OFFICER		TROY CORN JACK CATES
5. Resources Assigned this Period						
Strike Team / Task Force / Resource Designator		LWD	Leader	Number Persons	Drop Off PT./Time	Pick Up PT./Time
O-643 SOF2 DEMOB 10/18-1800		10/18	JOHN STUCHELL	1	ARCHIE CK ICP/0700	ARCHIE CK ICP/1800
O-10003 READ (BLM)		10/31	JEFFREY MCENROE	1	ARCHIE CK ICP/0700	ARCHIE CK ICP/1800
O-359 FFT2 (W/ FS READS)		10/17	BENJAMIN PURSLEY	1	ARCHIE CK ICP/0700	ARCHIE CK ICP/1800
O-502 ARCH (FS)		10/17	TROY FERONE	1	ARCHIE CK ICP/0700	ARCHIE CK ICP/1800
E-175 AMBU AMR MEDIC 3 DEMBOB 10/18		10/19	SEAN RAWSON	2	ARCHIE CK ICP/0700	ARCHIE CK ICP/1800
O-681 EMPF DEMOB 10/18		10/25	NATHAN BLAKELY	1	ARCHIE CK ICP/0700	ARCHIE CK ICP/1800
6. Control Operations/Work Assignments:						
Task: Patrol. Purpose: Protection of timber resources and improvements. End State: Incident is no longer a threat to improvements and timber values.						
7. Special Instructions:						
See ICS 205 Communications Plan for the current day. See Demob List for times to start Demob process						
8. Division/Group Communication Summary						
Function	Channel	RX Frequency N/W	RX Tone/NAC	TX Frequency N/W	TX Tone/NAC	Mode
COMMAND						
TACTICAL						
LOGISTICS						
AIR TO GROUND						
9. Prepared By (Resource Unit Leader)			Approved By (Planning Section Chief)		Date	Time
JILL JOHNSON			MARGE HUTCHINSON		10/16/2020	2010

Division/Group Assignment List (ICS 204 WF)
Controlled Unclassified Information//Basic

1. Incident Name:			3.			
ARCHIE CREEK			Branch:		Division/Group:	
2. Operational Period: DAY			N/Q			
Date/Time: 10/17/2020 0700-1800 SAT		Date/Time: 10/18/2020 0700-1800 SUN				
4. Operations Personnel						
OPERATIONS CHIEF		JEFF BOUSCHOR; TONY ENGEL		DIVISION/GROUP SUPERVISOR		MICHAEL JACKSON
AIR ATTACK SUPERVISOR				SAFETY OFFICER		TROY CORN JACK CATES
5. Resources Assigned this Period						
Strike Team / Task Force / Resource Designator		LWD	Leader	Number Persons	Drop Off PT./Time	Pick Up PT./Time
E-353 ENG4 USFS 465			LUKE TALCOTT	8	ARCHIE CK ICP/0700	ARCHIE CK ICP/1800
RESOURCES DEMOBING SUNDAY 10/18					ARCHIE CK ICP/0700	ARCHIE CK ICP/1800
O-643 SOF2		10/22	JOHN STUCHELL	1	ARCHIE CK ICP/0700	ARCHIE CK ICP/1800
O-194 TFLD		10/25	DENNIS MAWHINNEY	1	ARCHIE CK ICP/0700	ARCHIE CK ICP/1800
O-686 HEQB		10/26	BLAKE LINDSAY	1	ARCHIE CK ICP/0700	ARCHIE CK ICP/1800
E-357 EXCA MARK JONES TRUCKING		10/23	JUSTIN BLACK	2	ARCHIE CK ICP/0700	ARCHIE CK ICP/1800
E-48 LOG TRK MARK JONES TRUCKING		10/25	JUSTIN CAMDEN	1	ARCHIE CK ICP/0700	ARCHIE CK ICP/1800
E-49 LOG TRK MARK JONES TRUCKING		10/19	RICK SMITH	1	ARCHIE CK ICP/0700	ARCHIE CK ICP/1800
E-337 EXCA ZEBS TREE SERVICE		10/18	DOUG STAFF	2	ARCHIE CK ICP/0700	ARCHIE CK ICP/1800
E-29 AMBU MEDIC 1		10/18	JASONN BUCHNER	2	ARCHIE CK ICP/0700	ARCHIE CK ICP/1800
O-66 REAF (FS)		10/22	JESSE SOY	1	ARCHIE CK ICP/0700	ARCHIE CK ICP/1800
O-359 FFT2 (W/ FS READS)		10/17	BENJAMIN PURSLEY	1	ARCHIE CK ICP/0700	ARCHIE CK ICP/1800
O-502 ARCH (FS)		10/17	TROY FERONE	1	ARCHIE CK ICP/0700	ARCHIE CK ICP/1800
O-683 READ (T) (FS)		10/26	COURTNEY DEVER	1	ARCHIE CK ICP/0700	ARCHIE CK ICP/1800
6. Control Operations/Work Assignments:						
Task: Patrol. Continue suppression repair per repair plan standards. Reduce Danger trees along 4712 road. Purpose: Protection of timber resources and improvements. Remove danger trees that could impact road						
8. Division/Group Communication Summary						
Function	Channel	RX Frequency N/W	RX Tone/NAC	TX Frequency N/W	TX Tone/NAC	Mode
COMMAND						
TACTICAL						
LOGISTICS						
AIR TO GROUND						
9. Prepared By (Resource Unit Leader)			Approved By (Planning Section Chief)		Date	Time
JILL JOHNSON			MARGE HUTCHINSON		10/16/2020	2010

Division/Group Assignment List (ICS 204 WF)
 Controlled Unclassified Information//Basic

1. Incident Name:			3.			
ARCHIE CREEK			Branch:	Division/Group:		
2. Operational Period: DAY						
Date/Time: 10/17/2020 0700-1800 SAT		Date/Time: 10/18/2020 0700-1800 SUN		N/Q		
4. Operations Personnel						
OPERATIONS CHIEF		JEFF BOUSCHOR; TONY ENGEL		DIVISION/GROUP SUPERVISOR		MICHAEL JACKSON
AIR ATTACK SUPERVISOR				SAFETY OFFICER		TROY CORN JACK CATES
6. Control Operations/Work Assignments:						
corridors. End State: Incident is no longer a threat to improvements and timber values. Reduce hazards along road system.						
7. Special Instructions:						
See ICS 205 Communications Plan for the current day. See Demob List for times to start Demob process.						
8. Division/Group Communication Summary						
Function	Channel	RX Frequency N/W	RX Tone/NAC	TX Frequency N/W	TX Tone/NAC	Mode
COMMAND						
TACTICAL						
LOGISTICS						
AIR TO GROUND						
9. Prepared By (Resource Unit Leader)			Approved By (Planning Section Chief)		Date	Time
JILL JOHNSON			MARGE HUTCHINSON		10/16/2020	2010

Division/Group Assignment List (ICS 204 WF)
Controlled Unclassified Information//Basic

1. Incident Name:			3.			
ARCHIE CREEK			Branch:		Division/Group:	
2. Operational Period: DAY			WRIGHT CREEK			
Date/Time: 10/17/2020 0700-1800 SAT		Date/Time: 10/18/2020 0700-1800 SUN				
4. Operations Personnel						
OPERATIONS CHIEF		JEFF BOUSCHOR; TONY ENGEL		DIVISION/GROUP SUPERVISOR		BOB HINDS
AIR ATTACK SUPERVISOR				SAFETY OFFICER		TROY CORN JACK CATES
5. Resources Assigned this Period						
Strike Team / Task Force / Resource Designator		LWD	Leader	Number Persons	Drop Off PT./Time	Pick Up PT./Time
RESOURCES DEMOBING SUNDAY 10/18						
O-643 SOF2		10/22	JOHN STUCHELL	1	ARCHIE CK ICP/0700	ARCHIE CK ICP/1800
O-684 TFLD		10/24	BOB DANCHOK	1	ARCHIE CK ICP/0700	ARCHIE CK ICP/1800
O-598 HEQB		10/17	JOHN CAROON	1	ARCHIE CK ICP/0700	ARCHIE CK ICP/1800
E-346 LDFR J&D LOGGING & CONTR		10/20	LJ SANOWSKI	2	ARCHIE CK ICP/0700	ARCHIE CK ICP/1800
E-347 LDFR J&D LOGGING & CONTR		10/25	JOHN SANOWSKI	2	ARCHIE CK ICP/0700	ARCHIE CK ICP/1800
O-496 EMPF (DEMOB 10/18)			CODY BENNETT	1	ARCHIE CK ICP/0700	ARCHIE CK ICP/1800
RESOURCES DEMOBING SATURDAY 10/17						
O-607 HEQB (T)		10/17	KENNY LEMMONDS	1	ARCHIE CK ICP/0700	ARCHIE CK ICP/1800
O-669 FELB		10/23	CALIB BALDWIN	1	ARCHIE CK ICP/0700	ARCHIE CK ICP/1800
O-361 FMOD TIMBER TIPPER		10/19	RAY SCHLATTER	2	ARCHIE CK ICP/0700	ARCHIE CK ICP/1800
E-318 EXCA URE OUTDOORS		10/17	DON GILBERT	1	ARCHIE CK ICP/0700	ARCHIE CK ICP/1800
E-360 SKD1 WARREN PARTRIDGE		10/24	WARREN PARTRIDGE	1	ARCHIE CK ICP/0700	ARCHIE CK ICP/1800
E-100 FEL1 PONSEE HARV MILLER TIMBER		10/18	TREVEN OKES	2	ARCHIE CK ICP/0700	ARCHIE CK ICP/1800
O-140 READ (FS)		10/21	CHRIS WOODCOCK	1	ARCHIE CK ICP/0700	ARCHIE CK ICP/1800
O-502 ARCH (FS)		10/17	TROY FERONE	1	ARCHIE CK ICP/0700	ARCHIE CK ICP/1800
8. Division/Group Communication Summary						
Function	Channel	RX Frequency N/W	RX Tone/NAC	TX Frequency N/W	TX Tone/NAC	Mode
COMMAND						
TACTICAL						
LOGISTICS						
AIR TO GROUND						
9. Prepared By (Resource Unit Leader)			Approved By (Planning Section Chief)		Date	Time
JILL JOHNSON			MARGE HUTCHINSON		10/16/2020	2010

Division/Group Assignment List (ICS 204 WF)
Controlled Unclassified Information//Basic

1. Incident Name:			3.			
ARCHIE CREEK			Branch:	Division/Group: WRIGHT CREEK		
2. Operational Period: DAY						
Date/Time: 10/17/2020 0700-1800 SAT		Date/Time: 10/18/2020 0700-1800 SUN				
4. Operations Personnel						
OPERATIONS CHIEF		JEFF BOUSCHOR; TONY ENGEL		DIVISION/GROUP SUPERVISOR		BOB HINDS
AIR ATTACK SUPERVISOR				SAFETY OFFICER		TROY CORN JACK CATES
5. Resources Assigned this Period						
Strike Team / Task Force / Resource Designator		LWD	Leader	Number Persons	Drop Off PT./Time	Pick Up PT./Time
6. Control Operations/Work Assignments:						
<p><u>Task:</u> Utilize qualified READ to identify burned and scorched danger trees. Cut, process, remove and deck danger trees that could threaten the 4711 Road (see Archie Creek and Thielsen Danger tree falling specifications). Utilize mechanized equipment to limit exposure to falling and bucking hazards. Use hand falling and bucking only as needed. Pile Slash for future disposal.</p> <p><u>Purpose:</u> Remove danger trees that could potentially threaten the 4711 Road travel corridor. Prepare and store merchantable logs for removal.</p> <p><u>End State:</u> Danger trees are identified by qualified READs and removed based on Archie Creek Fire Repair Plan. Merchantable material is available for removal and remaining slash is piled for future treatment or disposal.</p>						
7. Special Instructions:						
<p>See ICS 205 Communications Plan for the current day. See Demob List for times to start Demob process.</p>						
8. Division/Group Communication Summary						
Function	Channel	RX Frequency N/W	RX Tone/NAC	TX Frequency N/W	TX Tone/NAC	Mode
COMMAND						
TACTICAL						
LOGISTICS						
AIR TO GROUND						
9. Prepared By (Resource Unit Leader)			Approved By (Planning Section Chief)		Date	Time
JILL JOHNSON			MARGE HUTCHINSON		10/16/2020	2010

Division/Group Assignment List (ICS 204 WF)

Controlled Unclassified Information//Basic

1. Incident Name:			3.			
ARCHIE CREEK			Branch:		Division/Group:	
2. Operational Period: DAY						
Date/Time: 10/17/2020 0700-1800 SAT		Date/Time: 10/18/2020 0700-1800 SUN		DFPA W/T/D/E		
4. Operations Personnel						
OPERATIONS CHIEF				DIVISION/GROUP SUPERVISOR		PAUL RITTER (541) 580-7149
SAFETY OFFICER						
5. Resources Assigned this Period						
Strike Team / Task Force / Resource Designator		LWD	Leader	Number Persons	Drop Off PT./Time	Pick Up PT./Time
ENG T6 #15-01			K. SMITH (541)530-0477	2		
ENG T6 #11-15			T.BABIKOFF (541)671-3363	2		
ENG T6 #89-88			J. BROWN (541)580-5117	2		
6. Control Operations/Work Assignments:						
<ul style="list-style-type: none"> Monitor and patrol lines Backhaul equipment no longer needed Identify and complete needed suppression repair on private lands Coordinate and communicate with federal resources and IMT 						
7. Special Instructions:						
See ICS 205 Communications Plan for the current day.						
8. Division/Group Communication Summary						
Function	Channel	RX Frequency N/W	RX Tone/NAC	TX Frequency N/W	TX Tone/NAC	Mode
COMMAND						
TACTICAL						
LOGISTICS						
AIR TO GROUND						
9. Prepared By (Resource Unit Leader)			Approved By (Planning Section Chief)		Date	Time
JILL JOHNSON			MARGE HUTCHINSON		10/16/2020	2010

Division/Group Assignment List (ICS 204 WF)

Controlled Unclassified Information//Basic

1. Incident Name:			3.			
THIELSEN			Branch:		Division/Group:	
2. Operational Period: DAY			THIELSEN		A/M/P/W	
Date/Time: 10/17/2020 0700-1800 SAT	Date/Time: 10/18/2020 0700-1800 SUN					
4. Operations Personnel						
OPERATIONS CHIEF		JEFF BOUSCHOR; TONY ENGEL		BRANCH DIRECTOR		AARON ROWE
DIVISION/GROUP SUPERVISOR		CODY ACORD CHRIS WHITE (T)		SAFETY OFFICER		TROY CORN JACK CATES
5. Resources Assigned this Period						
Strike Team / Task Force / Resource Designator	LWD	Leader	Number Persons	Drop Off PT./Time		Pick Up PT./Time
E-147 EXCA SCOTT MARSHALL TRUCKING	10/25	SCOTT MARSHALL	1	NO DIA CHIP PILE/0700		NO DIA CHIP PILE/1800
E-148 EXCA SHAD STUFFLEBEAM CUTTING	10/25	JOSIAH SCOFIELD	1	NO DIA CHIP PILE/0700		NO DIA CHIP PILE/1800
RESOURCES DEMOBING SUNDAY 10/18				NO DIA CHIP PILE/0700		NO DIA CHIP PILE/1800
O-589.2 SOF2	10/18	TODD CAMM	1	NO DIA CHIP PILE/0700		NO DIA CHIP PILE/1800
O-125 HEQB (T)	10/20	MAX LEIDENFROST	1	NO DIA CHIP PILE/0700		NO DIA CHIP PILE/1800
E-247 ENG6 JR WILDFIRE 07	10/22	ROBERT WEAVER	3	NO DIA CHIP PILE/0700		NO DIA CHIP PILE/1800
E-71 AMBU AMBO 1571	10/26	RICHARD HERRMANN	1	NO DIA CHIP PILE/0700		NO DIA CHIP PILE/1800
O-6 READ	10/18	JEDIDIAH HANCOCK	1	NO DIA CHIP PILE/0700		NO DIA CHIP PILE/1800
O-134 REAF	10/18	SOPHIA KIM	1	NO DIA CHIP PILE/0700		NO DIA CHIP PILE/1800
6. Control Operations/Work Assignments:						
Task: Patrol. Complete suppression repair per repair plan standards.						
Purpose: Continue to protect values and limit resource damage through suppression efforts.						
End State: Incident is no longer a threat to values at risk.						
7. Special Instructions:						
See ICS 205 Communications Plan for the current day.						
See Demob list for times to start Demob process.						
8. Division/Group Communication Summary						
Function	Channel	RX Frequency N/W	RX Tone/NAC	TX Frequency N/W	TX Tone/NAC	Mode
COMMAND						
TACTICAL						
LOGISTICS						
AIR TO GROUND						
9. Prepared By (Resource Unit Leader)			Approved By (Planning Section Chief)		Date	Time
JILL JOHNSON			MARGE HUTCHINSON		10/16/2020	2010

Division/Group Assignment List (ICS 204 WF)
Controlled Unclassified Information//Basic

1. Incident Name:			3.			
THIELSEN			Branch:		Division/Group:	
2. Operational Period: DAY			THIELSEN		NORTH DIAMOND	
Date/Time: 10/17/2020 0700-1800 SAT		Date/Time: 10/18/2020 0700-1800 SUN				
4. Operations Personnel						
OPERATIONS CHIEF		JEFF BOUSCHOR; TONY ENGEL		BRANCH DIRECTOR		AARON ROWE
DIVISION/GROUP SUPERVISOR		CODY ACORD; RICHARD TINGLE CHRIS WHITE (T)		SAFETY OFFICER		TROY CORN JACK CATES
5. Resources Assigned this Period						
Strike Team / Task Force / Resource Designator		LWD	Leader	Number Persons	Drop Off PT./Time	Pick Up PT./Time
O-19 TFLD		10/27	BRIAN SMITH	1	NO DIA CHIP PILE/0700	NO DIA CHIP PILE/1800
O-204 TFLD		10/21	TRACY MARTINDALE	1	NO DIA CHIP PILE/0700	NO DIA CHIP PILE/1800
O-685 HEQB		10/25	MELISSA STEELE	1	NO DIA CHIP PILE/0700	NO DIA CHIP PILE/1800
E-178 ENG3 UMPQUA 334		10/28	TOMMY DAVIS	8	NO DIA CHIP PILE/0700	NO DIA CHIP PILE/1800
E-171 EXCA MID VALLEY RANCH		10/24	JAKE BRADY	2	NO DIA CHIP PILE/0700	NO DIA CHIP PILE/1800
RESOURCES DEMOBING SUNDAY 10/18					NO DIA CHIP PILE/0700	NO DIA CHIP PILE/1800
O-589.2 SOF2		10/18	TODD CAMM	1	NO DIA CHIP PILE/0700	NO DIA CHIP PILE/1800
O-18 HEQB		10/27	MICHAEL KARR	1	NO DIA CHIP PILE/0700	NO DIA CHIP PILE/1800
E-35 DOZ3 PJF INC		10/27	PAUL FENTER	2	NO DIA CHIP PILE/0700	NO DIA CHIP PILE/1800
E-29 EXCA DENNY POTTER LOGGING		10/18	DENNY POTTER	2	NO DIA CHIP PILE/0700	NO DIA CHIP PILE/1800
E-144 EXCA FS 1990		10/15	(STAFF AS NEEDED)	2	NO DIA CHIP PILE/0700	NO DIA CHIP PILE/1800
E-145 LDFR FS 6304			(STAFF AS NEEDED)		NO DIA CHIP PILE/0700	NO DIA CHIP PILE/1800
E-153 LDFR LANE FOREST PRODUCTS		10/22	DARREL BOOTS	1	NO DIA CHIP PILE/0700	NO DIA CHIP PILE/1800
E-138 TDMP DUMP TRUCK FS 2943		10/27	JUSTIN GUNN	1	NO DIA CHIP PILE/0700	NO DIA CHIP PILE/1800
E-139 TDMP DUMP TRUCK FS 4018			RYAN NORTON	1	NO DIA CHIP PILE/0700	NO DIA CHIP PILE/1800
E-140 TDMP DUMP TRUCK FS 6303			(STAFF AS NEEDED)	1	NO DIA CHIP PILE/0700	NO DIA CHIP PILE/1800
E-155 TDMP DEAN INNOVATIONS		10/28	BRANDON ROBERTS	1	NO DIA CHIP PILE/0700	NO DIA CHIP PILE/1800
8. Division/Group Communication Summary						
Function	Channel	RX Frequency N/W	RX Tone/NAC	TX Frequency N/W	TX Tone/NAC	Mode
COMMAND						
TACTICAL						
LOGISTICS						
AIR TO GROUND						
9. Prepared By (Resource Unit Leader)			Approved By (Planning Section Chief)		Date	Time
JILL JOHNSON			MARGE HUTCHINSON		10/16/2020	2010

Division/Group Assignment List (ICS 204 WF)
Controlled Unclassified Information//Basic

1. Incident Name:			3.			
THIELSEN			Branch:		Division/Group:	
2. Operational Period: DAY			THIELSEN		NORTH DIAMOND	
Date/Time: 10/17/2020 0700-1800 SAT		Date/Time : 10/18/2020 0700-1800 SUN				
4. Operations Personnel						
OPERATIONS CHIEF		JEFF BOUSCHOR; TONY ENGEL		BRANCH DIRECTOR		AARON ROWE
DIVISION/GROUP SUPERVISOR		CODY ACORD; RICHARD TINGLE CHRIS WHITE (T)		SAFETY OFFICER		TROY CORN JACK CATES
5. Resources Assigned this Period						
Strike Team / Task Force / Resource Designator		LWD	Leader	Number Persons	Drop Off PT./Time	Pick Up PT./Time
E-141 TCTL FOREST SERVICE TILT BED 4020			(STAFF AS NEEDED)	1	NO DIA CHIP PILE/0700	NO DIA CHIP PILE/1800
E-143 GRD GRADER FS 6302			(STAFF AS NEEDED)	1	NO DIA CHIP PILE/0700	NO DIA CHIP PILE/1800
RESOURCES DEMOBING SATURDAY 10/17					NO DIA CHIP PILE/0700	NO DIA CHIP PILE/1800
E-154 TDMP DEAN INNOVATIONS		10/28	NICK ROPKINS	1	NO DIA CHIP PILE/0700	NO DIA CHIP PILE/1800
6. Control Operations/Work Assignments:						
Task: Haul chips and slash to No Di, chip slash, spread chips at NoDi chip area. Process, remove, and deck merchantable logs. Repair Dozer lines. Purpose: Protect values and limit resource damage. End State: Incident is no longer a threat to values at risk. Contingency lines are in place for future protection of Diamond Lake Community.						
7. Special Instructions:						
See ICS 205 Communications Plan for the current day. See Demob List for times to start Demob process.						
8. Division/Group Communication Summary						
Function	Channel	RX Frequency N/W	RX Tone/NAC	TX Frequency N/W	TX Tone/NAC	Mode
COMMAND						
TACTICAL						
LOGISTICS						
AIR TO GROUND						
9. Prepared By (Resource Unit Leader)			Approved By (Planning Section Chief)		Date	Time
JILL JOHNSON			MARGE HUTCHINSON		10/16/2020	2010

INCIDENT RADIO COMMUNICATIONS PLAN (ICS 205)

Controlled Unclassified Information//Basic

1. Incident Name:	2. Date/Time Prepared:	3. Operational Period: DAY	
ARCHIE CREEK - SATURDAY 10/17	Date: 10/16/2020 Time: 2010	Date/Time From: 10/17/2020 0700 SAT	Date/Time To: 10/17/2020 1800 SAT

4. Basic Radio Channel Use:

Zone Group	Ch #	Function	Channel Name/Trunked Radio System Talkgroup	Assignment	RX Freq	RX Tone/NAC	TX Freq	TX Tone/NAC	Mode (A,D, or M)	Remarks
AC	1	TACTICAL	TAC 1	DIV A / R / S	168.0500N	123.0	168.0500N	123.0	A	TAC 1
AC	2	TACTICAL	TAC 2	DIV F / H / K	168.2000N	123.0	168.2000N	123.0	A	TAC 2
AC	3	TACTICAL	TAC 3	WRIGHT CREEK	168.6000N	123.0	168.6000N	123.0	A	TAC 3
AC	4	TACTICAL	TAC 4		166.7250N	123.0	166.7250N	123.0	A	RESERVED
AC	5	TACTICAL	TAC 5	DIV N/Q	166.7750N	123.0	166.7750N	123.0	A	TAC 5
AC	6	TACTICAL	RED NET	DFPA DIV W/T/D/E	151.3400N	156.7	151.3400N	156.7	A	DFPA RED NET
AC	7	COMMAND	CMD 7	DIV A, WRIGHT CRK	171.8250N	123.0	168.4250N	123.0	A	SCOTT MOUNTAIN
AC	8	COMMAND	CMD 8	DIV H/K, N/Q	173.5000N	123.0	168.5625N	123.0	A	TWIN LAKES
AC	9	COMMAND	CMD 9	DIV N/Q, R/S, W/T/D/E	170.4500N	123.0	168.1000N	123.0	A	RED BUTTE
AC	10	COMMAND	CMD 10	DIV F, H/K, WRIGHT CREEK	169.5375N	123.0	164.7125N	123.0	A	CHILCOOT MOUNTAIN
AC	11	COMMAND	DFPA RPT	DIV W/T/D/E	151.1600N		159.4275N	146.2	A	DFPA SIMULCAST REPEATER
AC	12	COMMAND	ROD LANE		170.0250N		166.3000N	107.2	A	BLM LANE MTN REPEATER
AC	13	COMMAND	CHILCOOT	DIV F, H/K	170.5500N	103.5	164.8000N	192.8	A	FS CHILCOOT REPEATER
AC	14	AIR TO GROUND	A/G 50	ALL	168.2875N		168.2875N		A	A/G PRIMARY UPF
AC	15	AIR TO GROUND	ODF A/G	ALL	151.3100N		151.3100N	156.7	A	ODF IA WHITE NET
AC	16	AIR GUARD	AIRGUARD	ALL	168.6250N		168.6250N	110.9	A	AIRGUARD

5. Special Instructions:

6. Prepared By (Communications Unit Leader)	Name: MISSY PARKER	Signature: <i>Missy Parker</i>
ICS 205	IAP Page	Date/Time: 10/16/2020 2010

Controlled Unclassified Information//Basic

FINAL

INCIDENT RADIO COMMUNICATIONS PLAN (ICS 205)

Controlled Unclassified Information//Basic

1. Incident Name:	2. Date/Time Prepared:	3. Operational Period: DAY	
THIELSEN - SATURDAY 10/17	Date: 10/16/2020 Time: 2000	Date/Time From: 10/17/2020 0700 SAT	Date/Time To: 10/17/2020 1800 SAT

4. Basic Radio Channel Use:										
Zone Group	Ch #	Function	Channel Name/Trunked Radio System Talkgroup	Assignment	RX Freq	RX Tone/NAC	TX Freq	TX Tone/NAC	Mode (A,D, or M)	Remarks
T	1	COMMAND	FAIRVIEW		170.5500N	103.5	164.8000N	173.8		
T	2	COMMAND	RED BUTTE		170.5500N	103.5	164.8000N	179.9	A	
T	3	COMMAND	CHILCOOT	ALL DIVISIONS	170.5500N	103.5	164.8000N	192.8	A	COMMS TO ARCHIE FIRE
T	4	COMMAND	E DOEHD		171.4250N	103.5	166.0000N	186.2	A	
T	5	COMMAND	CINNAMON	ALL DIVISIONS	171.4250N	103.5	166.0000N	192.8	A	UMPQUA NF CINNAMON BUTTE
T	6	COMMAND	PIG IRON		171.4250N	103.5	166.0000N	179.2	A	
T	7	COMMAND	PICKETT		172.3500N	103.5	166.2625N	192.8	A	
T	8	COMMAND	ACKER		172.3500N	103.5	166.2625N	173.8	A	
T	9	COMMAND	CEDAR		172.3500N	103.5	166.2625N	186.2	A	
T	10	TACTICAL	UPF PRJ	DIV A/M/P/W	163.7125N	103.5	163.7125N	103.5	A	
T	11	TACTICAL	NURD PRJ	NORTH DIAMOND	169.1250N	103.5	169.1250N	103.5	A	
T	12	TACTICAL	DLRD PRJ		168.2625N	103.5	168.2625N	103.5	A	
T	13	TACTICAL	CG/T PRJ		167.3750N	103.5	167.3750N	103.5	A	
T	14	COMMAND	RRFHERSH		169.5750N	67.0	164.8750N	67.0	A	
T	15	COMMAND	INTEROP		152.6600N	151.4	157.8600N	110.9	A	
T	16	AIR TO GROUND	A/G 50	ALL DIVISIONS	168.2875N		168.2875N		A	UMPQUA NF A/G PRIMARY

5. Special Instructions:

6. Prepared By (Communications Unit Leader)	Name: MISSY PARKER	Signature: <i>Missy Parker</i>
ICS 205	IAP Page	Date/Time: 10/16/2020 2000

Controlled Unclassified Information//Basic

FINAL

INCIDENT RADIO COMMUNICATIONS PLAN (ICS 205)

Controlled Unclassified Information//Basic

1. Incident Name:	2. Date/Time Prepared:	3. Operational Period: DAY	
ARCHIE / THIELSEN - SUNDAY 10/18	Date: 10/16/2020 Time: 2000	Date/Time From: 10/18/2020 0700 SUN	Date/Time To: 10/18/2020 1800 SUN

4. Basic Radio Channel Use:										
Zone Group	Ch #	Function	Channel Name/Trunked Radio System Talkgroup	Assignment	RX Freq	RX Tone/NAC	TX Freq	TX Tone/NAC	Mode (A,D, or M)	Remarks
AT	1	COMMAND	FAIRVIEW		170.5500N	103.5	164.8000N	173.8	A	
AT	2	COMMAND	RED BUTTE	DIV A/R/S AND WEST WRIGHT CK	170.5500N	103.5	164.8000N	179.9	A	ARCHIE FIRE
AT	3	COMMAND	CHILCOOT	DIV F/H/K	170.5500N	103.5	164.8000N	192.8	A	ARCHIE FIRE-IF PIG IRON DOESN'T WORK
AT	4	COMMAND	E DOEHD	DIV N/Q	171.4250N	103.5	166.0000N	186.2	A	ARCHIE FIRE
AT	5	COMMAND	CINNAMON	ALL DIVISIONS	171.4250N	103.5	166.0000N	192.8	A	THIELSEN FIRE
AT	6	COMMAND	PIG IRON	DIF F/H/K AND EAST WRIGHT CK	171.4250N	103.5	166.0000N	179.2	A	ARCHIE FIRE-IF CHILCOOT DOESN'T WORK
AT	7	COMMAND	PICKETT		172.3500N	103.5	166.2625N	192.8	A	
AT	8	COMMAND	ACKER		172.3500N	103.5	166.2625N	173.8	A	
AT	9	COMMAND	CEDAR		172.3500N	103.5	166.2625N	186.2	A	
AT	10	TACTICAL	UPF PRJ	DIV A/M/P/W	163.7125N	103.5	163.7125N	103.5	A	THIELSEN FIRE
AT	11	TACTICAL	NURD PRJ	NORTH DIAMOND	169.1250N	103.5	169.1250N	103.5	A	THIELSEN FIRE
AT	12	TACTICAL	DLRD PRJ	DIV N/Q AND A/R/S	168.2625N	103.5	168.2625N	103.5	A	ARCHIE FIRE
AT	13	TACTICAL	CG/T PRJ	DIV F/H/K AND WRIGHT CREEK	167.3750N	103.5	167.3750N	103.5	A	ARCHIE FIRE
AT	14	COMMAND	RRFHERSH		169.5750N	67.0	164.8750N	67.0	A	
AT	15	COMMAND	INTEROP		152.6600N	151.4	157.8600N	110.9	A	
AT	16	AIR TO GROUND	A/G 50	BOTH FIRES	168.2875N		168.2875N		A	UMPQUA NF A/G PRIMARY

5. Special Instructions:

6. Prepared By (Communications Unit Leader)	Name: MISSY PARKER	Signature: <i>Missy Parker</i>
ICS 205	IAP Page	Date/Time: 10/16/2020 2000

Controlled Unclassified Information//Basic

FINAL

Thank You

On behalf of Roseburg District Bureau of Land Management, Umpqua National Forest, and all cooperators on this incident, we'd just like to thank you for your efforts to clean up trash and other debris around and within the fire area. Several of us who have worked on incidents around the West and the nation have noticed how 'clean' our work areas / Divisions have been. Thanks again for your diligence and keep up the great work!



Cheers!

Resource Advisors and Agency personnel

Weed Wash!!



The weed wash stations are still up and running! The objective, is to complete suppression repair and minimize damage to the natural resources. Thank you for your continued vigilance in helping us achieve that objective!

BOTH FIRES HAVE A WEED WASH.

- **Archie Creek Weed Wash location. (not at the ICP)**

Directions: Take 138 West into Glide, make a right (North) just West of the Glide Community Center (about 0.8 miles from Archie ICP). You'll see signs at the entrance. This is also the new Staging Area.

- **Thielsen Weed Wash location is at DP-3.**

PLEASE wash your vehicles during the following situations:

- Prior to demob...**DO NOT** take our weeds home with you!
- Whenever logistically possible, wash equipment/vehicles prior to moving from the BLM/Private checkerboard to Forest Service- administered lands.

****If you are just arriving to the Archie Creek or Thielsen Fire, take all vehicles through the weed wash before entering the fire areas.****

To review, please wash your vehicle / equipment upon:

1. Initial mobilization into camp;
2. Final demobilization;
3. Moving from BLM to FS;
4. As often as possible!

*Federal agencies and private industry spend thousands of dollars a year in the fight against noxious weeds as they spread from the valleys (or other infested areas) into un-infested Public Lands and plantations. Prevention is by far the most effective proactive weapon we have; it saves taxpayer dollars, and all it takes is a little extra time.

DEMOB INSTRUCTIONS

Follow all COVID-19 mitigations and steps below while demobing.

Demob steps for all resources (must be done in order):

1. Any resources that were off pavement must go through **weed wash**. See the **weed wash** page in this IAP for locations and further instructions.
2. Check out with **Ground Support** at either camp.
3. Turn in any radios to the **Communications Unit** and checked out supplies to the **Supply Unit** at either camp.
4. Call **Demob Unit @ 541-887-0815**
5. Call **Finance @ 509-949-3210 or 360-601-8820**
6. Scan this QR code and review the information on COVID.



If you follow this process you will be made available in the ordering system faster for your next assignment.

Any questions about the process please contact the Demob Unit at 541-887-0815.

Thank you and safe travels!

ARCHIE CREEK FIRE

DEMOB LIST

Saturday, October 17

CREWS

C-72 0845 (HC2I) UMPQUA SZ CREW 2

EQUIPMENT

**E-161 0815 (MAST) JERRY SWEARINGEN
E-315 1030 (EXCA) TABLE ROCK FORESTRY
E-100 1600 (FEL1) MILLER TIMBER SERVICES
E-318 1615 (EXCA) URE OUTDOORS
E-360 1645 (SKD1) WARREN PARTRIDGE**

OVERHEAD

**O-588 0730 (GISS) KIRK, ROBERT J
O-673 0715 (TFLD) WICKIZER, JASON ALAN
O-14 0800 (FMOD) TIMBER TIPPER ENTERPRISES INC
O-646 0830 (TFLD) CHILDS, MEREDITH
O-632 1300 (BCMG) LORD JR, ROBERT J
O-607 1400 (HEQB) LEMMONDS, KENNY LEE
O-361 1630 (FMOD) TIMBER TIPPER ENTERPRISES INC
O-502 1700 (ARCH) FERONE, TROY
O-669 1715 (FELB) BALDWIN, CALIB T
O-140 1745 (READ) WOODCOCK, CHRIS
O-496 1800 (EMPF) BENNETT, CODY JUSTIN
O-382 1900 (REM) DOUGLAS CTY REMS**

ARCHIE CREEK FIRE

DEMOB LIST

Sunday, October 18

CREWS

C-65 1800 (CC) CROW CAMP CREW #3

EQUIPMENT

E-175 0700 (AMBU) AMR (MEDIC 3)
E-337 0745 (EXCA) ZEBS TREE SERVICE
E-247 1000 (ENG6) JR WILDFIRE 07
E-48 1315 (LOG) MARK JONES TRUCKING, INC.
E-357 1330 (EXCA) MARK JONES TRUCKING
E-49 1345 (LOG) MARK JONES TRUCKING, INC.
E-346 1600 (LDFR) J&D LOGGING & CONTRACTING,
E-347 1615 (LDFR) J&D LOGGING & CONTRACTING,
E-29 1700 (AMBU) MEDIC 1

OVERHEAD

O-681 0715 (EMPF) BLAKELY, NATHAN
O-598 0730 (HEQB) CAROON, JOHN K
O-684 0745 (TFLD) DANCHOK, ROBERT S
O-686 0800 (HEQB) LINDSAY, BLAKE CATLIN
O-610 0900 (THSP) WIGGINS, BRAD
O-624 1200 (SEC2) SIMON, JOHN
O-676 1400 (TNSP) DAVIS, ERIKA L
O-481 1430 (COMT) MENARD, ROGER
O-636 1445 (COML) MINER, JEFF SCOTT
O-677 1500 (COML) REGAN, RONALD B
O-623 1515 (SEC1) CASTRO, JUSTIN ANTHONY
O-667 1530 (SECM) JANKE, CODY
O-661 1545 (SECG) YOUNG, RUSSEL
O-660 1630 (SECG) LEIBMAN, ERIC
O-659 1645 (SECG) PITNER, LENARD
O-662 1700 (SECG) RABIEH, JAMAL
O-614 1715 (INCM) STACY, DEBRA J
O-511 1730 (RADO) YAHNKE, JESSICA A
O-674 1745 (PIO2) BRUMM, JOEL N

THIELSEN FIRE
DEMOB LIST
Saturday, October 17

EQUIPMENT

E-72	0700	(AMBU)	MED TRANSPORT
E-68	0900	(SHW)	ROCKWELL AMERICAN SERVICES,
E-78	0915	(HNDW)	DIRT PHOBIA LLC/
E-82	0930	(FT2)	MID COLUMBIA PRODUCERS/
E-67	1000	(POT2)	H2O 2 GO/POTABLE WATER
E-1	1015	(WTS2)	BELLOIR TRUCKING
E-2	1115	(WTS2)	SCOTT MARSHALL TRUCKING
E-48	1200	(REF)	BRASETH PROPERTIES LLC /
E-154	1415	(TDMP)	DEAN INNOVATIONS

OVERHEAD

O-184	0945	(SECM)	CASEY, MARK E
O-157	1015	(EMTF)	HOOVER, DALE

Sunday, October 18

EQUIPMENT

E-132	0815	(CHIP)	LANE FOREST PRODUCTS, INC
E-141	0830	(TCTL)	FOREST SERVICE TILT BED
E-29	0845	(EXCA)	DENNY POTTER LOGGING
E-138	0915	(TDMP)	LONE WOLF WILDFIRE LLC
E-35	0945	(DOZ3)	PJF INC/ DOZ3 *IA*
E-139	1100	(TDMP)	FS DUMP TRUCK 4018
E-140	1115	(TDMP)	FS DUMP TRUCK 6303
E-155	1130	(TDMP)	DEAN INNOVATIONS
E-153	1145	(LDFR)	LANE FOREST PRODUCTS
E-69	1215	(GWT2)	ALPINE WATER SERVICE- T2 -
E-33	1230	(WEED)	AUTOBROT WATER LLC/WEED
E-143	1245	(GRD)	GRADER FS 6302
E-144	1300	(EXCA)	FOREST SERVICE EXCAVATOR
E-145	1415	(LDFR)	FRONT END LOADER 6304
E-70	1630	(AMBU)	CHEMULT RURAL FIRE PRO DIST
E-71	1630	(AMBU)	CHEMULT AMBO 1571

OVERHEAD

O-18	0930	(HEQB)	KARR, MICHAEL
O-125	1015	(HEQB)	LEIDENFROST, MAX
O-194	1030	(TFLD)	MAWHINNEY, DENNIS A

ARCHIE CREEK / THIELSEN CONTACT LIST

FINANCE

2020.archiecreek.finance@firenet.gov

DMOB

2020.archiecreek.DMOB@firenet.gov

SITUATION UNIT

2020.archiecreek.situation@firenet.gov

PLANS

2020.archiecreek.plans@firenet.gov

LOGISTICS

All orders (ICS-213) need to be submitted electronically to:

archiecreekordering@gmail.com

INFORMATION

2020.archiecreek@firenet.gov

NOTE: These email addresses are used for both Thielsen and Archie Creek Fires.



Good Morning Everyone and Heads Up!

Heads Up:

Just wanted to call attention to the fact that we are at the end of this assignment and our crews will begin tearing down both the ICP and the Thielsen Spike Camps this weekend. There will be a lot more activity in both camps as the yurts are taken down and vehicles are driving back and forth. Because of the increased activity, as always, situational awareness is key to our safety. Be sure to look up, look down, and look all around as you go about your day and look both ways before you take off across the parking lot or field regardless of whether you are walking or driving. There are a lot of moving parts at the end of an assignment so Heads Up!

Lost and Found: Lost and found at the Archie Creek ICP is in the Communication Yurt. If you are missing something you might check in with the Info. folks as they just may have what you are looking for. Information yurt located across from the Medical yurt at the ICP.



Finance: Understand we still have some volunteers out there but just learned that there is funding so if any of you volunteers want to get paid all you have to do is turn in your shift tickets and CTRs, and our Finance folks will see that you get a check. If you have any questions about your time, contact Finance at any of the numbers listed on the Finance page in this IAP.

H C A R T E R C R R Y B D E H N N B N C
S S L P O K O U H E E N O N A A O U O V
U X U K G O H G L O A W I T Y M S C S N
P D L B L T S N R L O X O W E U I H I O
H O X I R M I E E A O V B H S R D A R T
P G D A V K U V V N N D E C N T A N R G
D G A D C S E S I E C T Y R K E M A A N
E L W K U L E R O M L L I F F T S N H I
H F E Q C I T J T A F T I O R U P I D H
A Y H I K N A D M A N O S N H O J W E S
R D D B F C T S O R E L Y T T W L N H A
D R Q E K R V A N B U R E N P O O Y P W
I O U S N B A Y R W J G Z I J S N O A Z
N F O C J N T G O G E X E B L S Y H Z T
G N V X Q L E E E F A R Q I A D A M S X
B L T U C M I K C G C Y W I B T U F I H
J E F F E R S O N E I N A G A E R J Y S

Word Search for past presidents of the United States. Take care and have a great day!

Susie Manezes, HRSP 602-571-9327

ADAMS	ARTHUR	BUCHANAN
BUSH	CARTER	CLEVELAND
CLINTON	COOLIDGE	EISENHOWER
FILLMORE	FORD	GARFIELD
GRANT	HARDING	HARRISON
HAYES	HOOVER	JACKSON
JEFFERSON	JOHNSON	MCKINLEY
KENNEDY	MADISON	MONROE
NIXON	PIERCE	POLK
REAGAN	ROOSEVELT	TAFT
TAYLOR	TRUMAN	TYLER
VANBUREN	WASHINGTON	WILSON



THANK YOU FOR A JOB WELL DONE!

Good Morning Everyone!

Today is our last day on this incident. We will be turning this assignment over to a Type 4 Team at 1800 hours today. We want to thank all fire personnel for the outstanding work done on the Archie Creek and the Thielsen Fires. Because of your dedication and hard work, we were able to meet the Incident Objectives timely and safely.

It was a pleasure working with you on this incident and we expect that we will be seeing you again on another incident sometime in the future. We appreciate your work ethic and your can-do attitude which contributed to a very positive work environment for everyone.

The fire season was quite devastating for many families here in the Pacific Northwest and the Archie Creek fire was no exception. Families lost homes, property, and many valuables. Lives were changed because of the devastation. Thank you for being here and helping this community. There are not enough words to express the gratefulness of the families living in this community, the businesses, and the agencies whom you helped. **The words "Thank You" seem inadequate but they are nonetheless heartfelt.**

As you travel back to your home units, please drive defensively. If you become fatigued, please safely pull over and rest until you can continue your route home. **Remember we are always in the public's eye so keep in mind appropriate behavior and always do what is right.**

Take care, be safe and we will see you on the next fire assignment.

Thought for the Day

Adversity doesn't develop character, adversity reveals

character. ~ Dr. Tony Bacon, The Art of Servant Leadership

NWCG Wildland Fire Leadership Development Program

Respectfully,
PNW Team 12

Susie Manezes, Human Resource Specialist – Contact – 602-571-9327
PNW Team 12 HRSP

Archie Creek Fire & Thielsen Fire Training Message

*All open training assignments on this incident must be “closed out” with the TNSP by end of shift Saturday October 17th.
Remember to check for signatures....*



TNSP Hours:

7am - 7pm PST

Erika L. Davis ~ (850) 841-0038 ~ Erika.Davis@USDA.GOV

TRAINING CLOSE-OUT PROCEDURES



<https://tinyurl.com/y54ufg3v>

- Initiate Close-out via QR code
- Send completed Performance Evaluation(s), Evaluation Record(s), Final Evaluators Verification (if applicable)

Logistics Information

Archie Creek Kitchen

Breakfast: 0600-0830

Dinner: 1800-2030

Last meal served will be breakfast on Sunday, 10/18.

Archie Creek Showers

0500-1200

1400-2200

Last Shower at Basecamp: Sunday 0800

Last Shower at ICP: Sunday 0900

Archie Creek Laundry Service

Last drop off Saturday 1200

Pick up laundry no later than Sunday 0900

Thielsen Spike Kitchen

Breakfast: 0600-0900

Dinner: 1800-2030

Last meal served will be breakfast on Saturday, 10/17

Thielsen Spike Showers

0600-1200

1600-2200

Last Shower: Saturday 0900

FINANCE

Communications for Finance should be sent to

2020.Thielsen.finance@firenet.gov

2020.Archiecreek.finance@firenet.gov

If you have a need to file a claim – don't wait till you are demobing

Call us now!!!!

Demobing tomorrow? Make sure all your CTRs or Shift tickets are turned in.



Archie Creek

FINANCE SECTION OFFICE ADDRESS:

BLM Cache
2300 NW Aviation Drive
Roseburg, OR 97470



Thielsen

Contact Information:

Equipment Time: Christina Goebel – 509-670-5889

Personnel Time: Carol Long – 509-433-1115

Procurement: Mark Bohnet – 509-531-7418

Compensation & Claims: Barb Haxby – 360-601-8820

Finance Section Chief: Cheri Fuller – 509-949-3210

Deputy Finance Section Chief: Barb Haxby – 360-601-8820

ICPI: Rob Hechinger – 509-675-5821

To comply with COMD-19 mitigations, only personnel assigned and working within the ICP are allowed within the IMT Area

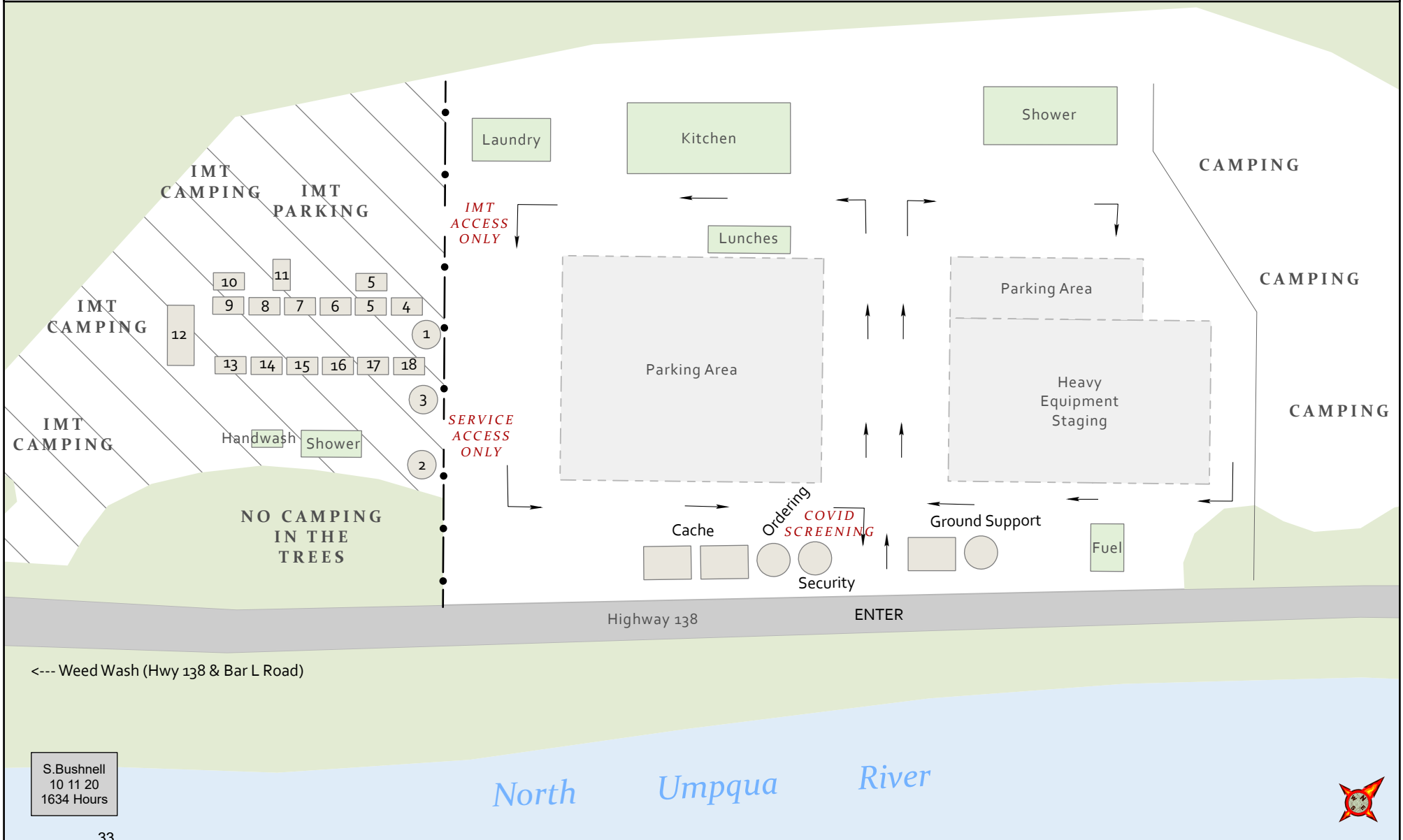
Access to Check-in / Demob and the Medical Unit are in place

IMT Personnel should keep contact with the Base Camp Area to a minimum

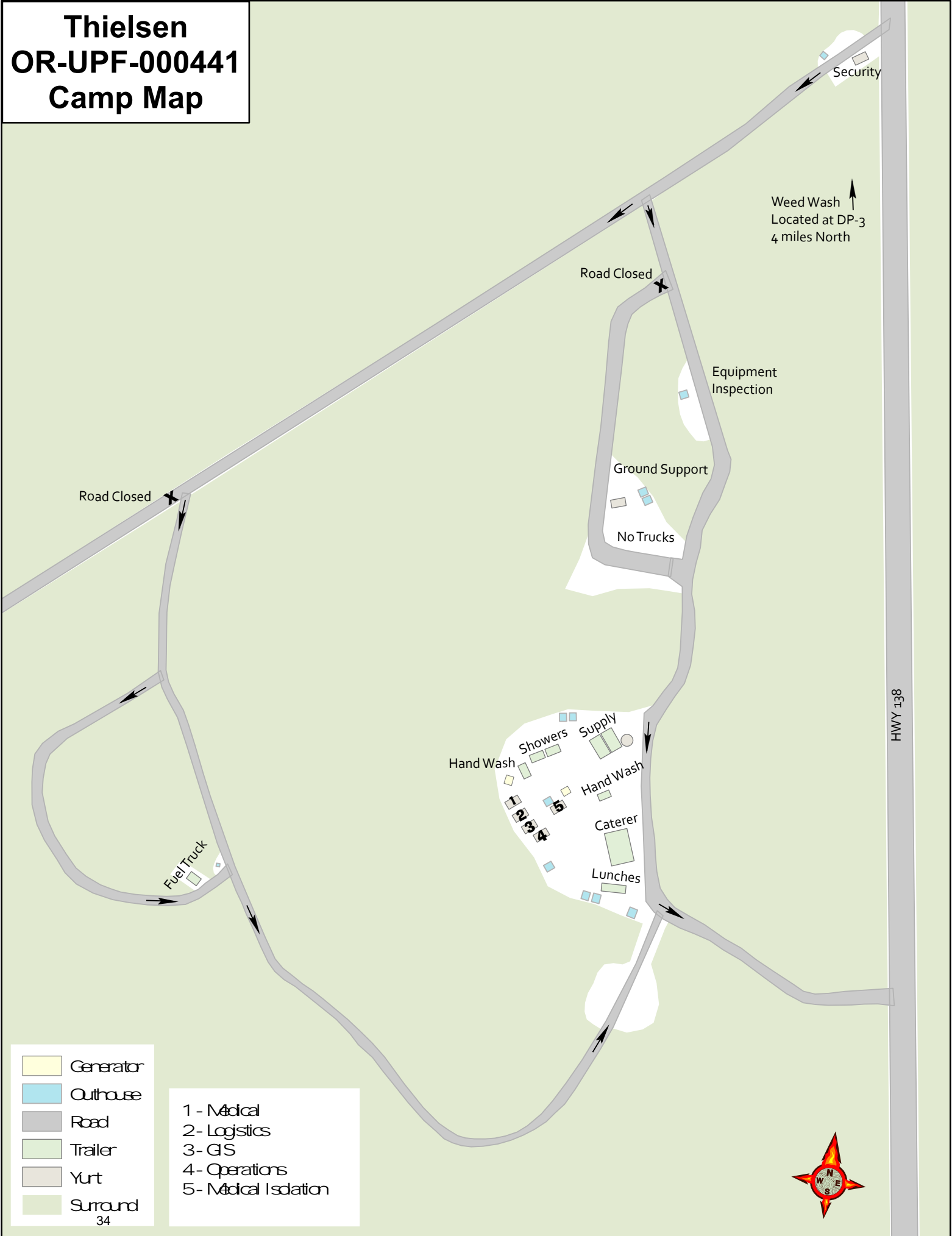
- | | | |
|------------------------|--------------------|-------------------------|
| 1 - Check-in / Demob | 8 - Plans | 15 - Documentation |
| 2 - Cooperator Meeting | 9 - Situation | 16 - LOGS |
| 3 - READ | 10 - GS | 17 - Finance |
| 4 - Medical Unit | 11 - Copy Service | 18 - Public Information |
| 5 - Communications | 12 - Large Meeting | |
| 6 - Small Mtg | 13 - IC | |
| 7 - Safety / OPS | 14 - HR | |

**Archie Creek
OR-UPF-000436
Strader Ranch ICP**

 IMT Area

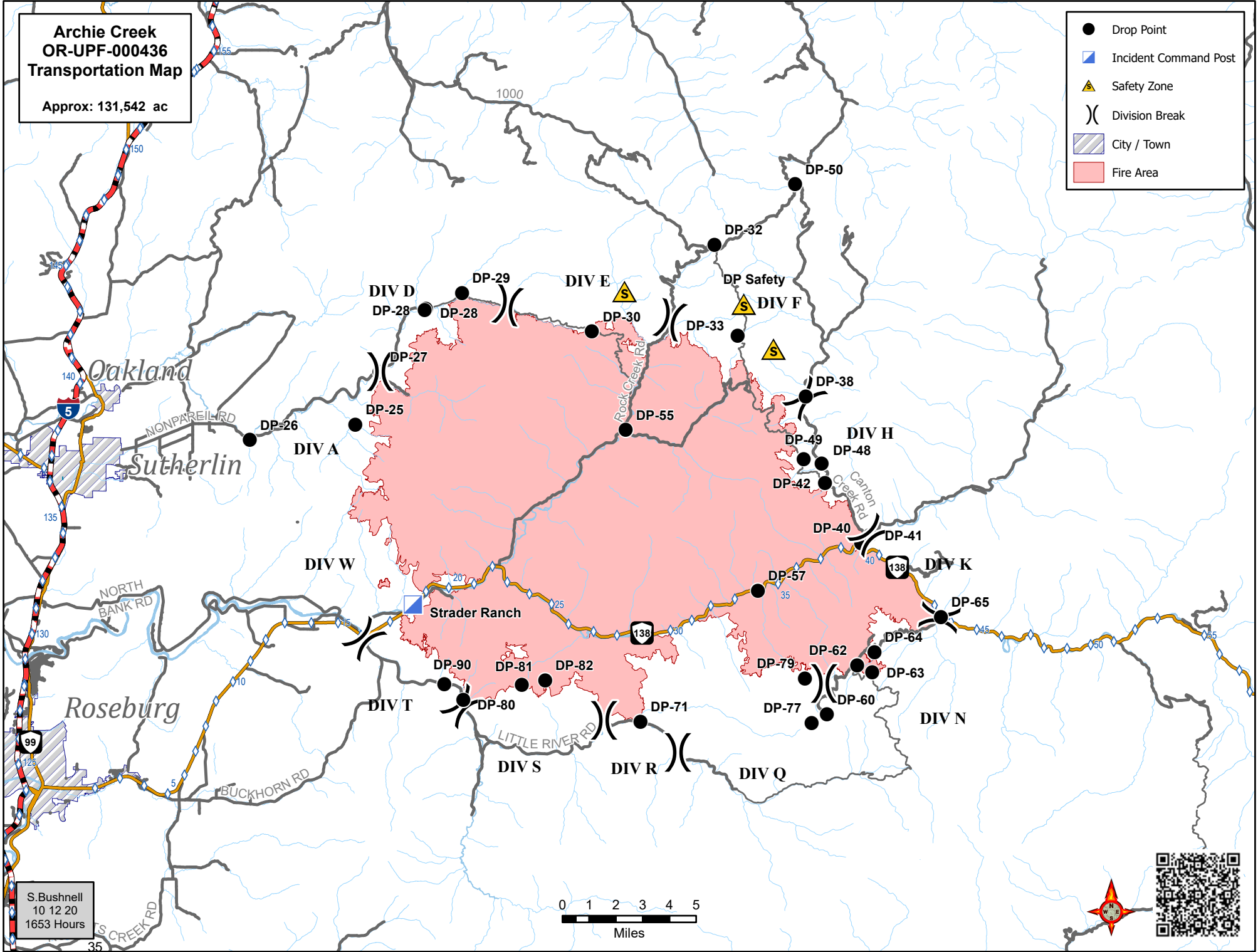


Thielsen OR-UPF-000441 Camp Map



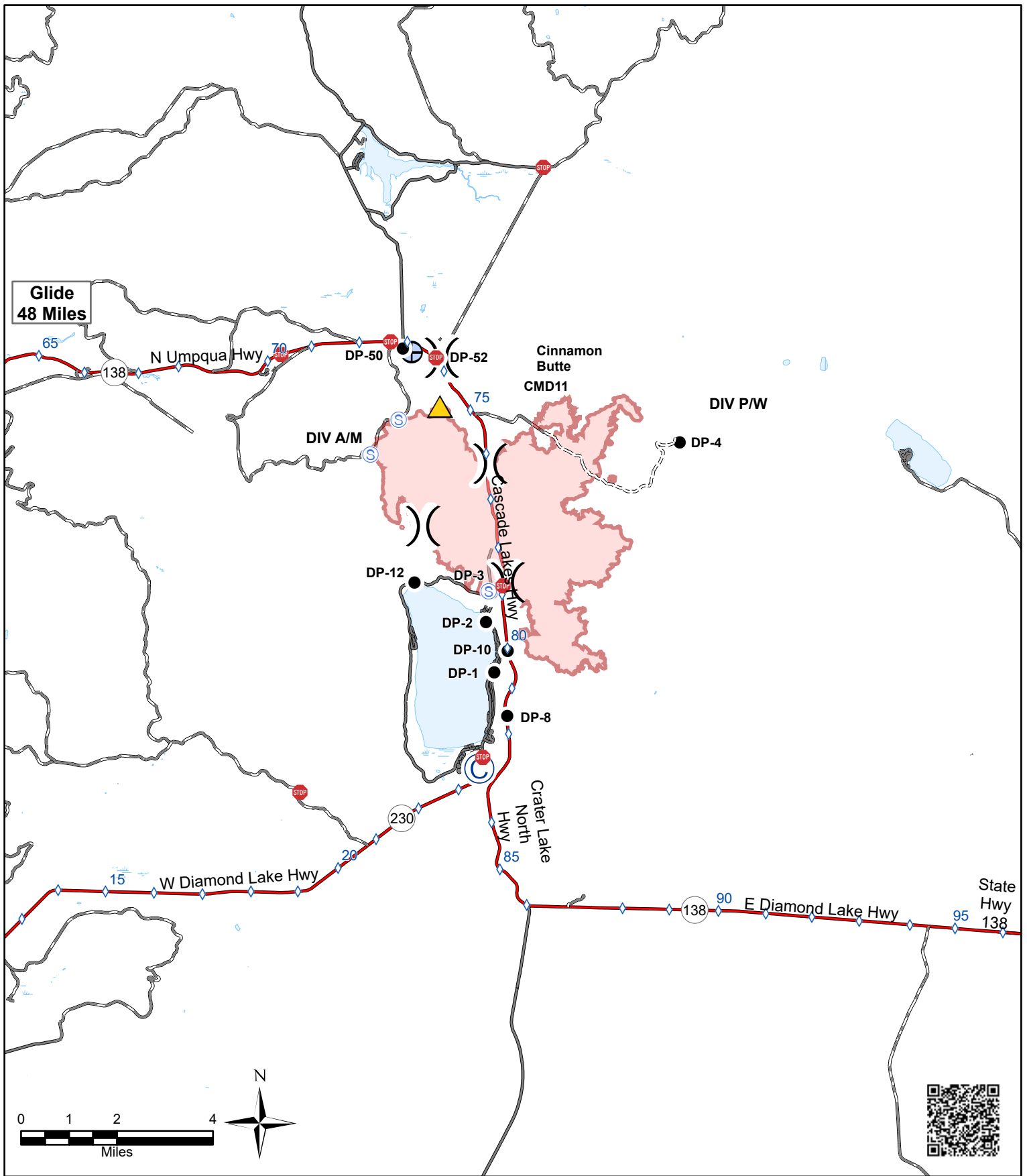
**Archie Creek
OR-UPF-000436
Transportation Map**
Approx: 131,542 ac

- Drop Point
- ▣ Incident Command Post
- ▲ Safety Zone
-) Division Break
- ▨ City / Town
- Fire Area



S. Bushnell
10 12 20
1653 Hours





-  Checkpoint
 -  Camp
 -  Drop Point
 -  Safety Zone
 -  Staging Area
 -  Water Development or Draft Site
 -  Division Break
 -  Wildfire Daily Fire Perimeter
 -  Mileposts
- 36

Thielsen

OR-UPF-000441

IAP Transportation Map

REQUIRED BY ALL PERSONNEL: COVID-19 DAILY CHECKLIST

Supervisors are required to go over this list each morning with assigned resources. Please make a notation in the remarks section on your daily Crew Time Report documenting your daily health assessment check.

Self-Awareness / Screening

- Notify supervisor if you or others experience:
 - Fever or chills
 - Cough
 - Shortness of breath or difficulty breathing
 - Fatigue
 - Muscle or body aches
 - Have you had close contact within the last 14-days with someone who is currently sick with confirmed COVID-19? (Note: Close contact is defined as within 6 feet for more than 15 minutes per CDC Guidelines)
 - Headache
 - New loss of taste or smell
 - Sore throat
 - Congestion or runny nose
 - Nausea or vomiting
 - Diarrhea
- Review and follow crew and division plans to isolate, triage, and transport symptomatic personnel: Contact line EMT or COVID Module personnel for next steps.
 - Masks must be worn at all times in base camp, spike camp and ICP.
 - Modules (e.g. crews, engines) should send representatives to pick up meals for the entire group: 1 person for engine crews, 3-4 people for 20 person crews.
 - Join morning briefing via phone (number provided in IAP)
 - Observe 6-foot social distancing during briefings and while standing in line for meals, and any other time you are near people outside of your module.
 - Limit contact between firefighters and the public as much as possible, use crew representatives to pick up supplies, fuel, etc.

**WEAR YOUR MASK
WASH YOUR HANDS
WATCH YOUR DISTANCE**

IN-CAMP EMERGENCY MEDICAL PROCEDURE

Archie Creek

ICP/Base Camp

- 1. Stay with Patient**
- 2. YELL for HELP**
- 3. Send someone to Communications or Call:**

24 hours 206-450-6582

Communications will start the appropriate medical response

Thielsen

Spike Camp

- 1. Stay with Patient**
- 2. YELL for HELP**
- 3. Call Lee Venning to start appropriate medical response:**

24 hours 417-459-5759

EMERGENCY PLAN

INCIDENT WITHIN AN INCIDENT

ON SCENE SUPERVISOR

In the event of an accident or medical incident of any size, your primary responsibility is to ENSURE that the victim(s) receive prompt and effective Triage, Treatment and Transportation.

- Conduct size-up of the incident (nature of accident, number type of resources involved, latitude and longitude location); notify incident communications center and supervisor, request assistance as needed.
- Order and coordinate medical and support response to the accident.
- Evaluate special needs (law enforcement, haz mat, etc.).
- Clear the command frequency if medical emergency; coordinate with incident communications and air attack for air medical transportation needs
- Preserve and photograph the scene for accident investigation.
- Remain aware of surroundings and the status of the main incident (delegate personnel to monitor the main fire) to ensure safety of medical treatment personnel.
- Until relieved, supervise and manage all personnel involved at the incident scene.
- **ENSURE THE MEDICAL INCIDENT REPORT IN THE INCIDENT ACTION PLAN IS BEING USED AND FOLLOWED.**

MEDICAL PLAN (ICS 206 WF)

1. Incident/Project Name				2. Operational Period												
Archie Creek				Date/Time 10/17-18/2020 0700-1800												
3. Ambulance Services																
Name		Complete Address		Phone		Advanced Life Support (ALS) Yes No										
Douglas County Fire District #2		4200 Carnes Rd Roseburg, OR 97471		Dispatch 541-440-4471 or 911		x										
Glide Rural Fire Protection		18910 N. Umpqua Hwy Glide, OR 97443		Dispatch 541-440-4471 or 911		x										
4. Air Ambulance Services																
Name		Phone		Type of Aircraft & Capability												
Reach Helicopter Service		800-338-4045		EC-135 Night Capability (Roseburg)												
Life Flight / Airlink		800-232-0911		EC-135 Night Capability												
Forest Service Short Haul		541-957-3253		Located in Sunriver, OR (35 min)												
5. Hospitals																
Name Complete Address		GPS Datum – WGS 84 Coordinate Standard Degrees Decimal Minutes DD° MM.MMM' N - Lat DD° MM.MMM' W - Long		Travel Time From ICP		Phone		Helipad Yes No		Level of Care Facility						
		Lat:	Long:	VHF:	Air							Gnd				
Legacy Emmanuel Medical 3001 N Gantenbein Ave. Portland, OR 97202		45° 32.688 N	122° 40.293 W	155.340	1 Hr 30 Min	3 Hr 10 Min	(888) 598-4232	X		Level 1 Trauma & Burn Center						
		43° 14.57 N	123° 21.99 W	155.340	20 Min	40 Min						541-677-4333	X		Level 3 Trauma	
		44° 04.87 N	123° 01.58 W	155.340	35 Min	1 Hr 10 Min										
Sacred Heart Medical Center 3333 Riverbend Dr. Springfield, OR 97477																
6. Division Branch Group		Capability				Personnel										
A/R/S																
F/H/K		Medic 3 (E-175 – Demob Sunday 0700), EMPF Blakley (O-681 Demob Sunday 0715)														
N/Q		Medic 1 (E-29 -Demob Sunday 1700), Douglas County REMS (0-382 – Demob Saturday 1900)														
Wright Creek																
7. Prepared By (Medical Unit Leader)		8. Date/Time		9. Reviewed By (Safety Officer)			10. Date/Time									
Bonnie Gibbons <i>Bonnie Gibbons</i>		10/16/2020 1900		Troy Corn <i>Troy Corn</i>			10/16/2020 1900									

MEDICAL PLAN (ICS 206 WF)

1. Incident/Project Name		2. Operational Period					
Thielsen		Date/Time 10/17-18/2020 0700-1800					
3. Ambulance Services							
Name	Complete Address	Phone	Advanced Life Support (ALS) Yes No				
Chemult Fire Protection	109800 US 97 Chemult, OR 97731	Dispatch 541-290-2172 or 911	x				
Crescent Fire and Ambulance	136727 Main Street Crescent, OR 97733	Dispatch 541-433-2466 or 911	x				
4. Air Ambulance Services							
Name	Phone	Type of Aircraft & Capability					
Mercy Flight	800-903-9000	Bell 407, Night Capability					
Life Flight / Airlink	800-232-0911	EC-135 Night Capability					
Forest Service Short Haul	541-957-3253	Located in Sunriver, OR (35min)					
5. Hospitals							
Name Complete Address	GPS Datum – WGS 84 Coordinate Standard Degrees Decimal Minutes DD° MM.MMM' N - Lat DD° MM.MMM' W - Long		Travel Time From ICP		Phone	Helipad Yes No	Level of Care Facility
	Lat:	Long:	Air	Gnd			
Legacy Emmanuel Medical 3001 N Gantenbein Ave. Portland, OR 97202	45° 32.688 N	122° 40.293 W	1 Hr 30 Min	3 Hr 10 Min	(888) 598-4232	X	Level 1 Trauma Burn Center
	155.340						
St. Charles 2500 Neff Road Bend, OR 97701	44° 3.4904 N	121° 18.9185 W	40 Min	1 Hr 10 Min	541-706-4550 (ER)	X	Level 2 Trauma
	155.340						
Sacred Heart Medical Center 3333 Riverbend Dr. Springfield, OR 97477	44° 04.87 N	123° 01.58 W	35 Min	1 Hr 10 Min	541-222-6929	X	Level 2 Trauma
	155.340						
6. Division Branch Group		Capability	Personnel				
N. Diamond							
A/M/P/W		Chemult Ambulance (E-71 Demob Sunday 1630), EMT Hoover (O-157 Demob Saturday 1015)					
7. Prepared By (Medical Unit Leader)		8. Date/Time	9. Reviewed By (Safety Officer)		10. Date/Time		
Bonnie Gibbons <i>Bonnie Gibbons</i>		10/16/2020 1900	Troy Corn <i>Troy Corn</i>		10/16/2020 1900		

MEDICAL PLAN (ICS 206 WF)

Controlled Unclassified Information//Basic

Medical Incident Report

FOR A NON-EMERGENCY INCIDENT, WORK THROUGH CHAIN OF COMMAND TO REPORT AND TRANSPORT INJURED PERSONNEL AS NECESSARY.

FOR A MEDICAL EMERGENCY: IDENTIFY ON SCENE INCIDENT COMMANDER BY NAME AND POSITION AND ANNOUNCE "MEDICAL EMERGENCY" TO INITIATE RESPONSE FROM IMT COMMUNICATIONS/DISPATCH.

Use the following items to communicate situation to communications/dispatch.

1. CONTACT COMMUNICATIONS / DISPATCH (**Verify correct frequency prior to starting report**)

Ex: "Communications, Div. Alpha. Stand-by for Emergency Traffic."

2. INCIDENT STATUS: *Provide incident summary (including number of patients) and command structure.*

Ex: "Communications, I have a Red priority patient, unconscious, struck by a falling tree. Requesting air ambulance to Forest Road 1 at (Lat./Long.) This will be the Trout Meadow Medical, IC is TFLD Jones. EMT Smith is providing medical care."

Severity of Emergency / Transport Priority	<input type="checkbox"/> RED / PRIORITY 1 Life or limb threatening injury or illness. Evacuation need is IMMEDIATE <i>Ex: Unconscious, difficulty breathing, bleeding severely, 2° – 3° burns more than 4 palm sizes, heat stroke, disoriented.</i> <input type="checkbox"/> YELLOW / PRIORITY 2 Serious Injury or illness. Evacuation may be DELAYED if necessary. <i>Ex: Significant trauma, unable to walk, 2° – 3° burns not more than 1-3 palm sizes.</i> <input type="checkbox"/> GREEN / PRIORITY 3 Minor Injury or illness. Non-Emergency transport <i>Ex: Sprains, strains, minor heat-related illness.</i>	
Nature of Injury or Illness & Mechanism of Injury		<i>Brief Summary of Injury or Illness (Ex: Unconscious, Struck by Falling Tree)</i>
Transport Request		<i>Air Ambulance / Short Haul/Hoist Ground Ambulance / Other</i>
Patient Location		<i>Descriptive Location & Lat. / Long. (WGS84)</i>
Incident Name		<i>Geographic Name + "Medical" (Ex: Trout Meadow Medical)</i>
On-Scene Incident Commander		<i>Name of on-scene IC of Incident within an Incident (Ex: TFLD Jones)</i>
Patient Care		<i>Name of Care Provider (Ex: EMT Smith)</i>

3. INITIAL PATIENT ASSESSMENT: *Complete this section for each patient as applicable (start with the most severe patient)*

Patient Assessment: See IRPG page 106

Treatment:

4. TRANSPORT PLAN:

Evacuation Location (if different): *(Descriptive Location (drop point, intersection, etc.) or Lat. / Long.)* Patient's ETA to Evacuation Location:

Helispot / Extraction Site Size and Hazards:

5. ADDITIONAL RESOURCES / EQUIPMENT NEEDS:

Example: Paramedic/EMT, Crews, Immobilization Devices, AED, Oxygen, Trauma Bag, IV/Fluid(s), Splints, Rope rescue, Wheeled litter, HAZMAT, Extrication

6. COMMUNICATIONS: Identify State Air/Ground EMS Frequencies and Hospital Contacts as applicable

Function	Channel Name/Number	Receive (RX)	Tone/NAC *	Transmit (TX)	Tone/NAC *
COMMAND					
AIR-TO-GRND					
TACTICAL					

7. CONTINGENCY: **Considerations:** *If primary options fail, what actions can be implemented in conjunction with primary evacuation method? Be thinking ahead.*

8. ADDITIONAL INFORMATION: *Updates/Changes, etc.*

REMEMBER: Confirm ETA's of resources ordered. Act according to your level of training. Be Alert. Keep Calm. Think Clearly. Act Decisively.

Controlled Unclassified Information//Basic