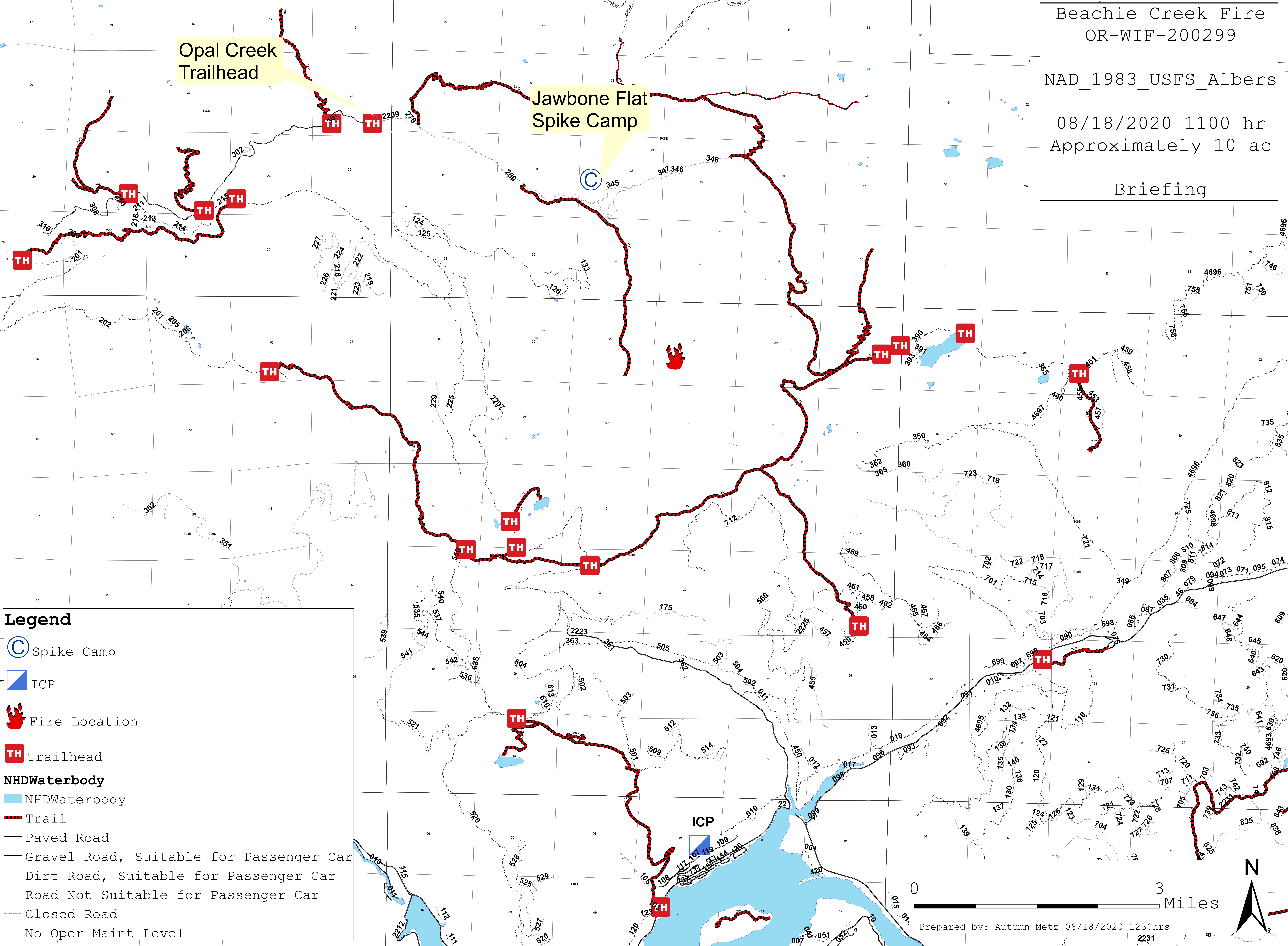


Beachie Creek Fire
 OR-WIF-200299

NAD_1983_USFS_Albers

08/18/2020 1100 hr
 Approximately 10 ac

Briefing



Legend

- Spike Camp
- ICP
- Fire_Location
- Trailhead
- NHDWaterbody**
- NHDWaterbody
- Trail
- Paved Road
- Gravel Road, Suitable for Passenger Car
- Dirt Road, Suitable for Passenger Car
- Road Not Suitable for Passenger Car
- Closed Road
- No Oper Maint Level

Prepared by: Autumn Metz 08/18/2020 1230hrs
 2231