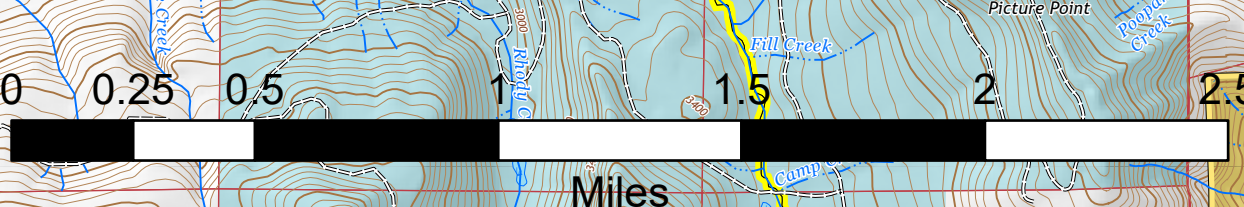


Aviation Map

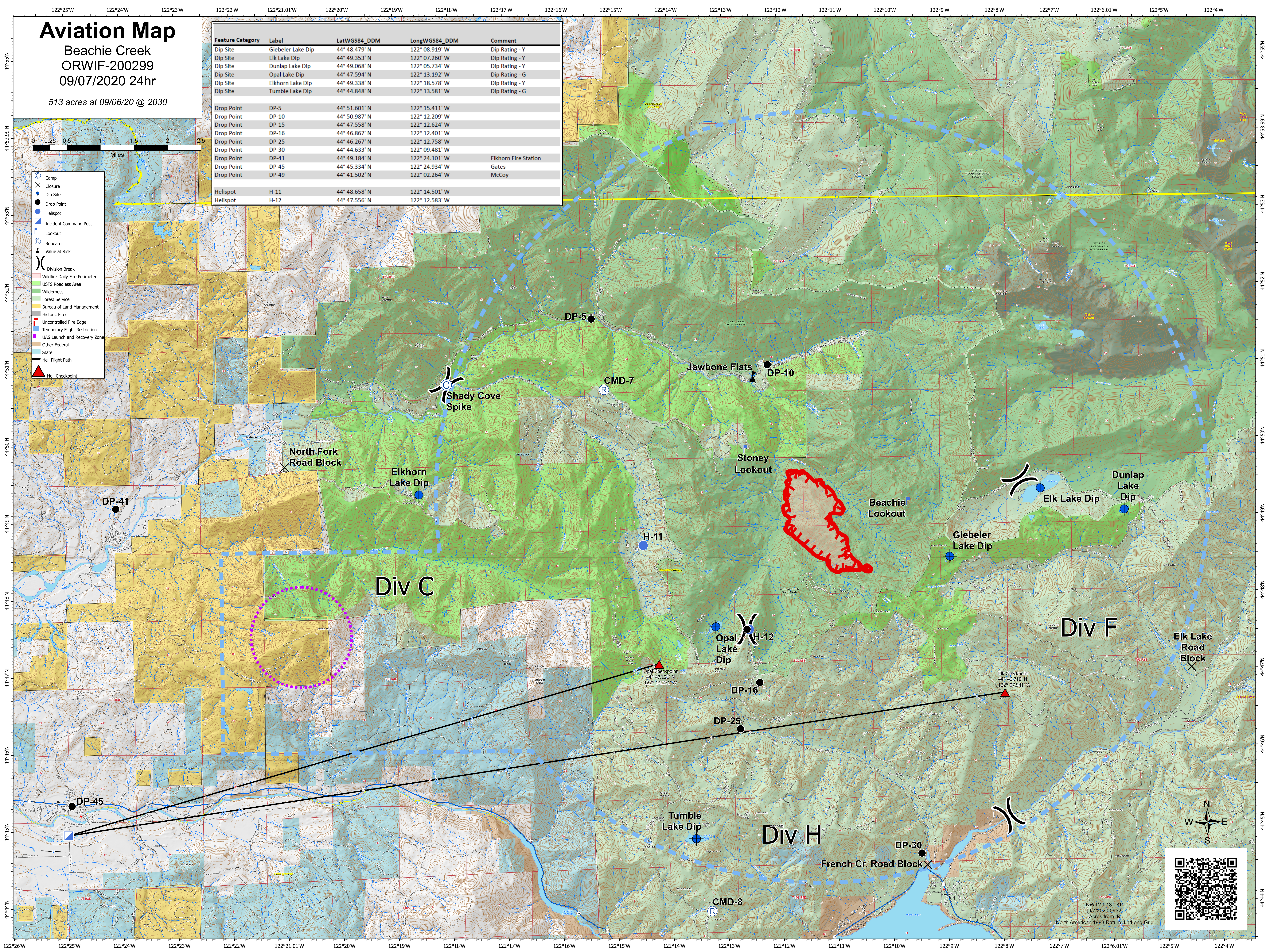
Beachie Creek
ORWIF-200299
09/07/2020 24hr

513 acres at 09/06/20 @ 2030

Feature Category	Label	LatWGS84_DDM	LongWGS84_DDM	Comment
Dip Site	Giebeler Lake Dip	44° 48.479' N	122° 08.919' W	Dip Rating - Y
Dip Site	Elk Lake Dip	44° 49.353' N	122° 07.260' W	Dip Rating - Y
Dip Site	Dunlap Lake Dip	44° 49.068' N	122° 05.734' W	Dip Rating - Y
Dip Site	Opal Lake Dip	44° 47.594' N	122° 13.192' W	Dip Rating - G
Dip Site	Elkhorn Lake Dip	44° 49.338' N	122° 18.578' W	Dip Rating - Y
Dip Site	Tumble Lake Dip	44° 44.848' N	122° 13.581' W	Dip Rating - G
Drop Point	DP-5	44° 51.601' N	122° 15.411' W	
Drop Point	DP-10	44° 50.987' N	122° 12.209' W	
Drop Point	DP-15	44° 47.558' N	122° 12.624' W	
Drop Point	DP-16	44° 46.867' N	122° 12.401' W	
Drop Point	DP-25	44° 46.267' N	122° 12.758' W	
Drop Point	DP-30	44° 44.633' N	122° 09.481' W	
Drop Point	DP-41	44° 49.184' N	122° 24.101' W	Elkhorn Fire Station
Drop Point	DP-45	44° 45.334' N	122° 24.934' W	Gates
Drop Point	DP-49	44° 41.502' N	122° 02.264' W	McCoy
Helispot	H-11	44° 48.658' N	122° 14.501' W	
Helispot	H-12	44° 47.556' N	122° 12.583' W	



- Camp
- Closure
- Dip Site
- Drop Point
- Helispot
- Incident Command Post
- Lookout
- Repeater
- Value at Risk
- Division Break
- Wildfire Daily Fire Perimeter
- USFS Roadless Area
- Wilderness
- Forest Service
- Bureau of Land Management
- Historic Fires
- Uncontrolled Fire Edge
- Temporary Flight Restriction
- UAS Launch and Recovery Zone
- Other Federal
- State
- Helicopter Flight Path
- Helicopter Checkpoint



NW IMT 13 - KD
9/7/2020 0852
Acres from IIR
North American 1983 Datum, Lat/Long Grid