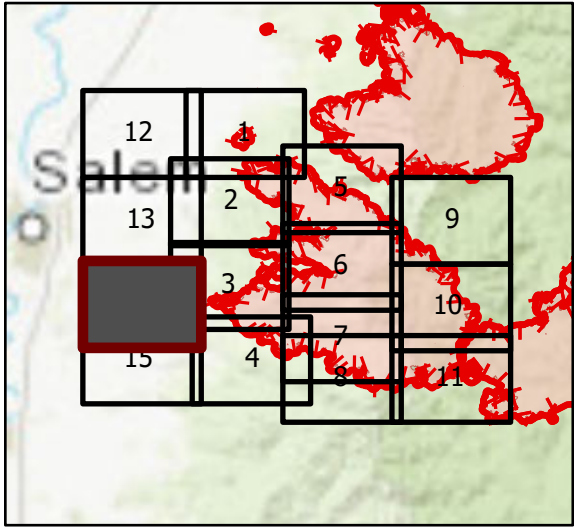


# OPS Tile 14

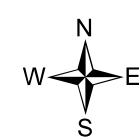
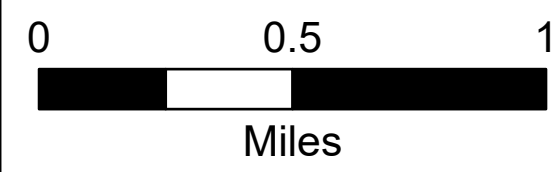
Beachie Creek Fire  
ORWIF-200299  
09/15/2020 24hr

190,138 acres at  
09/13/20 @ 2200

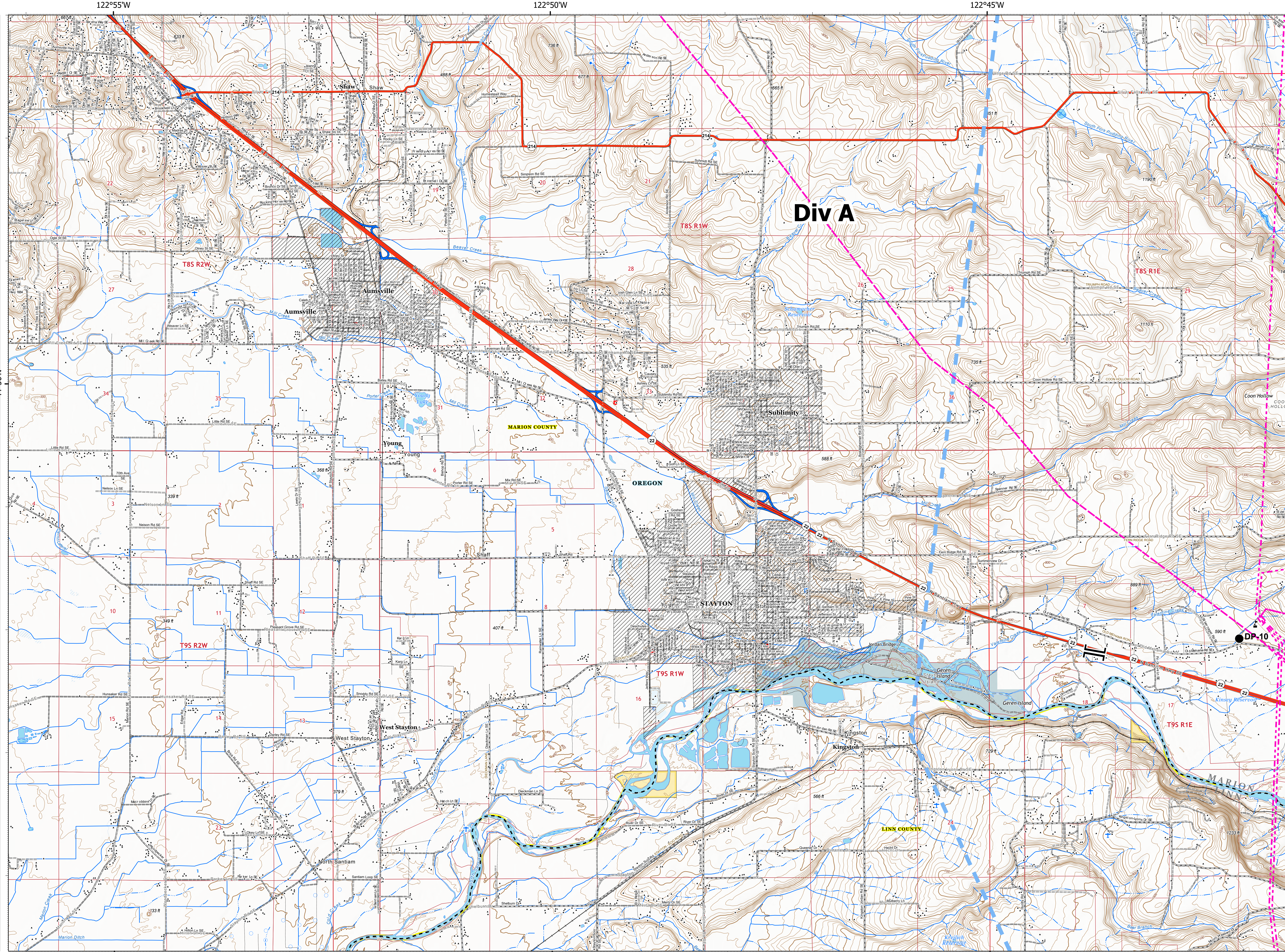


Page 14 of 15

- Temporary Flight Restriction
- Bureau of Land Management
- Local Government
- Private/Unknown
- State Highway
- Drop Point
- Value at Risk
- Branch Break
- Temporary Flight Restriction
- State Highway
- County Road
- Private Road
- County Boundary
- City Limits
- County Structures
- Place Name
- Hospital
- Fire Station
- Law Enforcement
- Airstrip
- Controlled access
- Highway or ramp
- Local connector
- Local or 4WD road
- Tunnel
- Ferry
- Controlled access
- Highway or ramp
- Local connector
- Local or 4WD road
- Controlled access
- Highway or ramp
- Local connector
- Local or 4WD road
- Alaska Pipeline
- Spring
- Well
- Perennial Stream
- Non-Perennial Stream
- Canal/Ditch
- Perennial Lake
- Swamp, Marsh
- Intermittent Lake
- Perennial Lake
- State or Territory
- County or Equivalent
- Bureau of Land Management
- Index
- Intermediate
- Depression Index
- Depression Intermediate
- Controlled access
- Highway or ramp
- Local connector
- Local or 4WD road
- Twin Ring
- Section
- Quad frame
- BPA Transmission Lines



9/14/2020 2018  
Acres from IR  
North American 1983 Datum, Lat/Long Grid



122°55'W

122°50'W

122°45'W

44°50'N