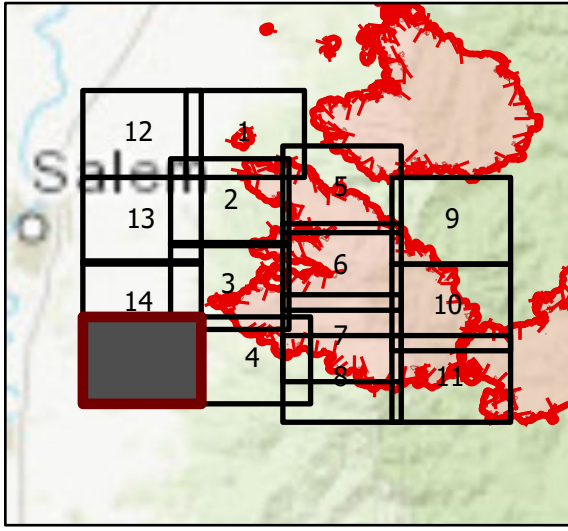


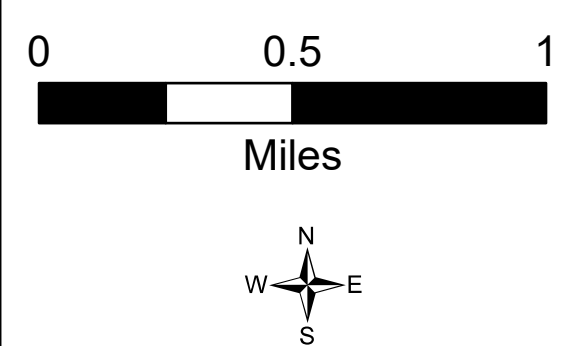
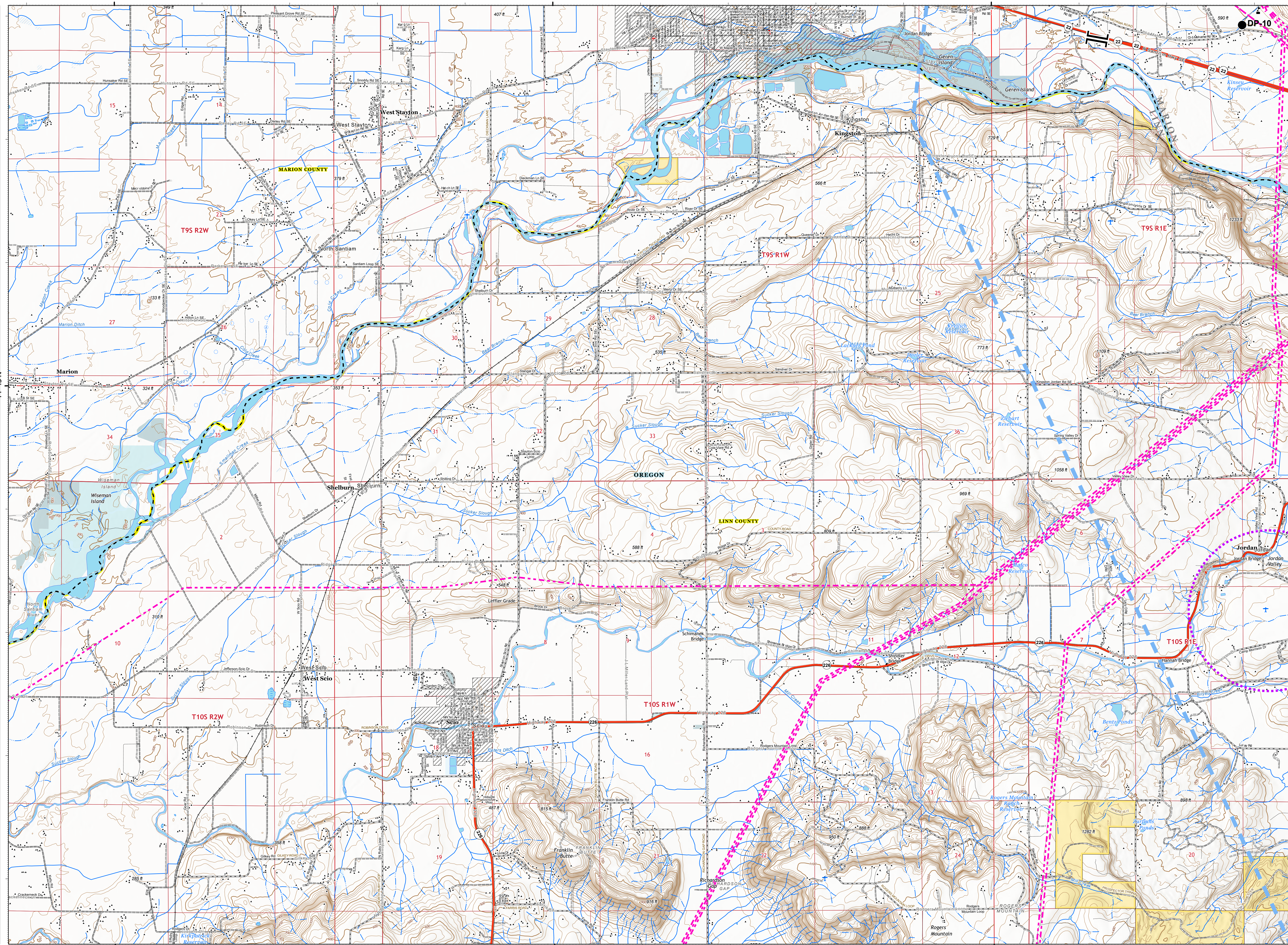
OPS Tile 15

Beachie Creek Fire
ORWIF-200299
09/15/2020 24hr
190,138 acres at
09/13/20 @ 2200



Page 15 of 15

- Temporary Flight Restriction
- UAS Launch and Recovery Zone
- Bureau of Land Management
- State
- Local Government
- Private/Unknown
- State Highway
- Drop Point
- Value at Risk
- Branch Break
- Temporary Flight Restriction
- UAS Launch and Recovery Zone
- State Highway
- County Road
- BLM Road
- Municipal Road
- Private Road
- County Boundary
- City Limits
- County Structures
- Place Name
- Index
- Fire Station
- Law Enforcement
- Airstrip
- Airport Runway
- Controlled access
- Highway or ramp
- Local connector
- Local or 4WD road
- Tunnel
- Ferry
- Highway or ramp
- Local connector
- Local or 4WD road
- Highway or ramp
- Local connector
- Local or 4WD road
- Railroad
- Alaska Pipeline
- Gaging Station
- Spring
- Well
- Perennial Stream
- Non-Perennial Stream
- Canal/Ditch
- Nonearthen Reservoir
- Perennial Lake
- Intermittent Lake
- Perennial Lake
- State or Territory
- County or Equivalent
- Bureau of Land Management
- Intermediate
- Depression Index
- Depression Intermediate
- Twin Ring
- Section
- Quad frame
- BPA Transmission Lines



9/14/2020 2018
Acres from IR
North American 1983 Datum, Lat/Long Grid

122°55'W

122°50'W

122°45'W

44°45'N