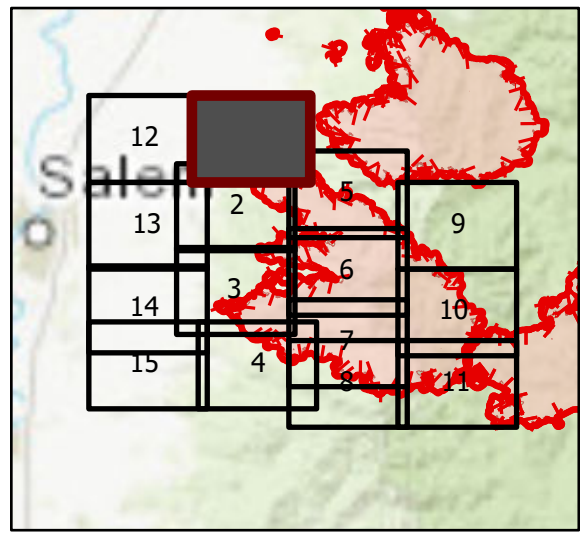


OPS Tile 1

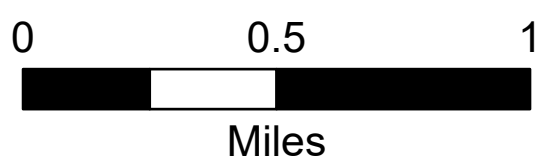
Beachie Creek Fire
ORWIF-200299
09/15/2020 24hr

190,138 acres at
09/13/20 @ 2200

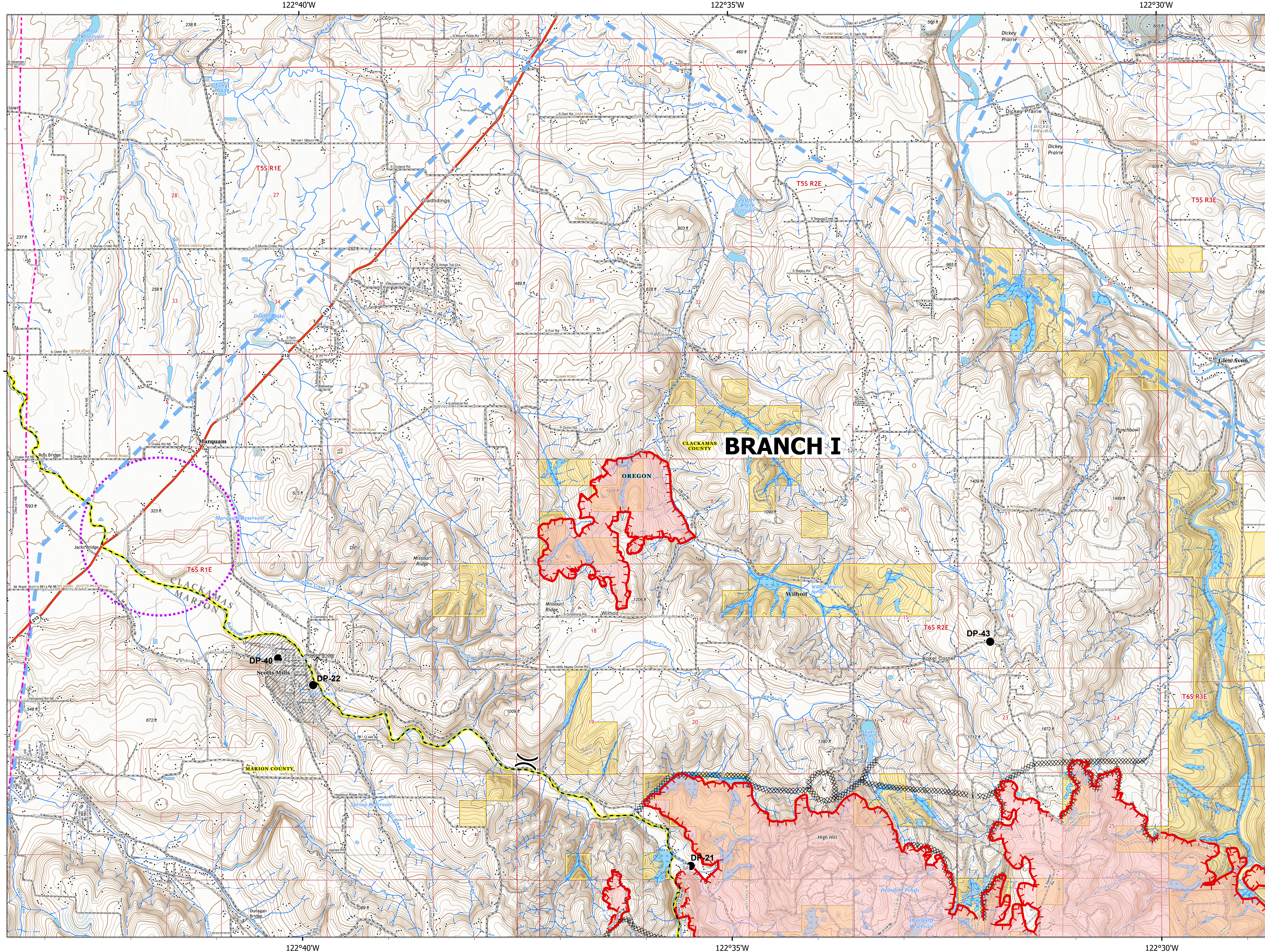


Page 1 of 15

- | | |
|---|---------------------------|
| XX Completed Dozer Line | City Limits |
| H Completed Hand Line | County Structures |
| R Road as Completed Line | Place Name |
| Blue Dashed Line Temporary Flight Restriction | Fire Station |
| US Launch and Recovery Zone | Uncontrolled Fire Edge |
| Wildfire Daily Fire Perimeter | Controlled access |
| Bureau of Land Management | Highway or ramp |
| State | Local connector |
| Local Government | Local or 4WD road |
| Private/Unknown | Tunnel |
| State Highway | Ferry |
| Bridge | Local connector |
| Closure | Local or 4WD road |
| Drop Point | Local or 4WD road |
| Fire Station | Alaska Pipeline |
| Water Source | Spring |
| Division Break | Perennial Stream |
| | Non-Perennial Stream |
| | Non-earth Dam |
| | Non-earth Shore |
| XX Completed Dozer Line | Perennial Lake |
| H Completed Hand Line | Swamp, Marsh |
| R Road as Completed Line | Intermittent Lake |
| Blue Dashed Line Temporary Flight Restriction | Perennial Lake |
| US Launch and Recovery Zone | State or Territory |
| Wildfire Daily Fire Perimeter | County or Equivalent |
| Bureau of Land Management | Bureau of Land Management |
| State Highway | Index |
| County Road | Intermediate |
| BLM Road | Tim Ring |
| Private Road | Section |
| County Boundary | Quad frame |
| | EPA Transmission Lines |



9/14/2020 2007
Acres from IR
North American 1983 Datum, Lat/Long Grid



122°40'W

122°35'W

122°30'W

45°5'N