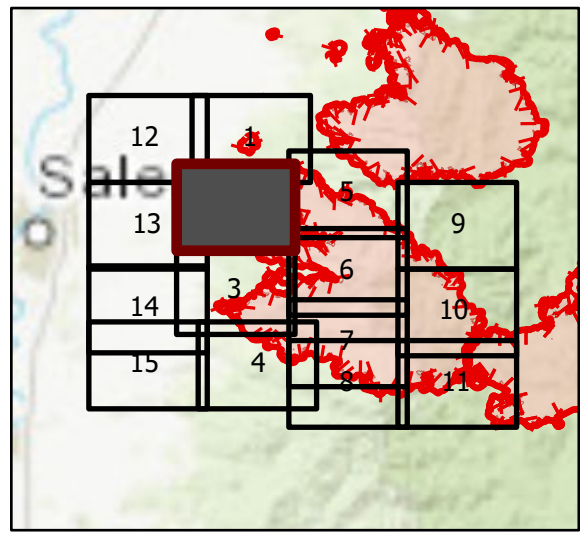


# OPS Tile 2

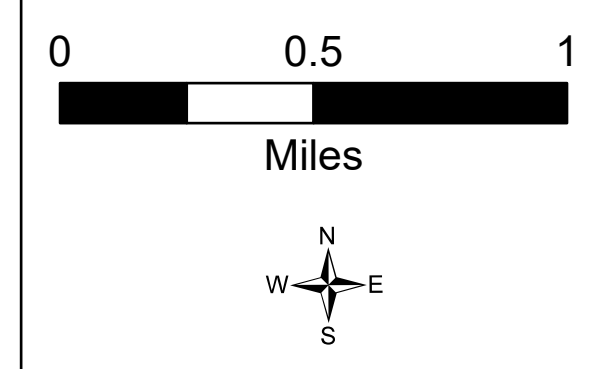
Beachie Creek Fire  
ORWIF-200299  
09/15/2020 24hr

190,138 acres at  
09/13/20 @ 2200

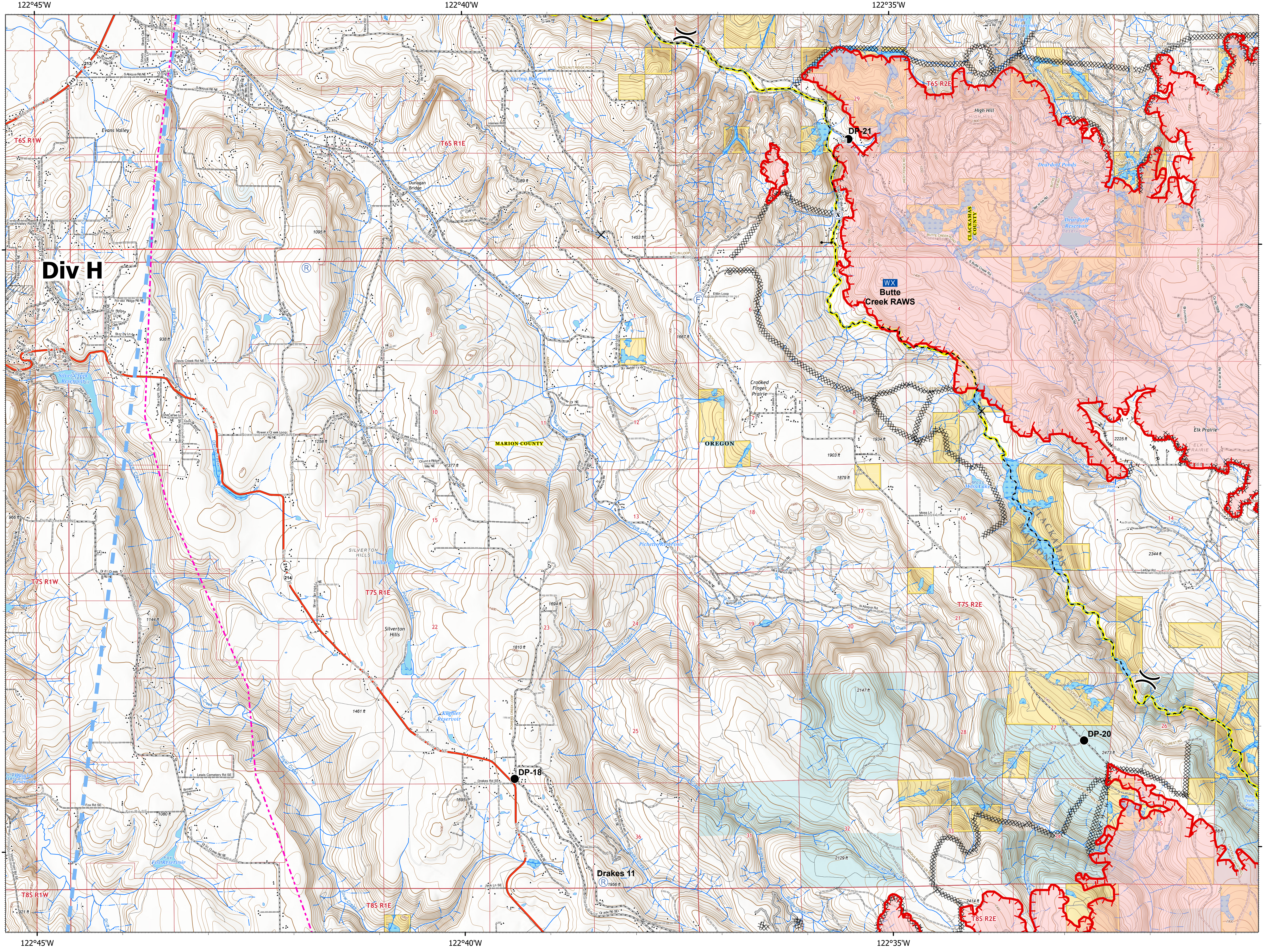


Page 2 of 15

- XX Completed Dozer Line
- H Completed Hand Line
- R Road as Completed Line
- Access or Improved Road
- Temporary Flight Restriction
- Uncontrolled Fire Edge
- Wildfire Daily Fire Perimeter
- Bureau of Land Management
- State
- Private/Unknown
- State Highway
- Bridge
- Closure
- Drop Point
- Fire Station
- Gate
- Mobile Weather Unit
- Repeater
- Water Source
- Division Break
- Completed Dozer Line
- Completed Hand Line
- Road as Completed Line
- Access or Improved Road
- Temporary Flight Restriction
- Uncontrolled Fire Edge
- Wildfire Daily Fire Perimeter
- State Highway
- County Road
- BLM Road
- Private Road
- County Boundary
- City Limits
- County Structures
- Place Name
- Fire Station
- Apprent Runway
- Controlled access
- Highway or ramp
- Local connector
- Local or 4WD road
- Local connector
- Local or 4WD road
- Local connector
- Local or 4WD road
- Alaska Pipeline
- Waterfall
- Perennial Stream
- Non-Perennial Stream
- Nonearthen Shore
- Perennial Lake
- Swamp, Marsh
- Dam
- State or Territory
- County or Equivalent
- Bureau of Land Management
- Index
- Intermediate
- Depression Intermediate
- Twin Ring
- Section
- Quad frame
- BPA Transmission Lines



9/14/2020 2008  
Acres from IR  
North American 1983 Datum, Lat/Long Grid



122°45'W 122°40'W 122°35'W 44°55'N