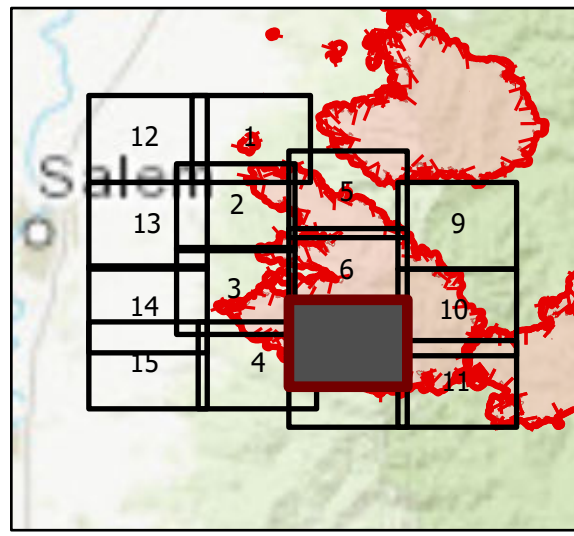


OPS Tile 7

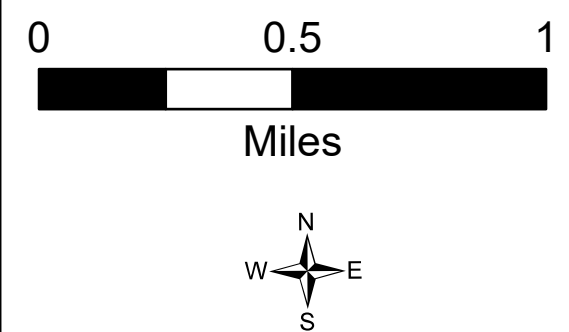
Beachie Creek Fire
ORWIF-200299
09/15/2020 24hr

190,138 acres at
09/13/20 @ 2200

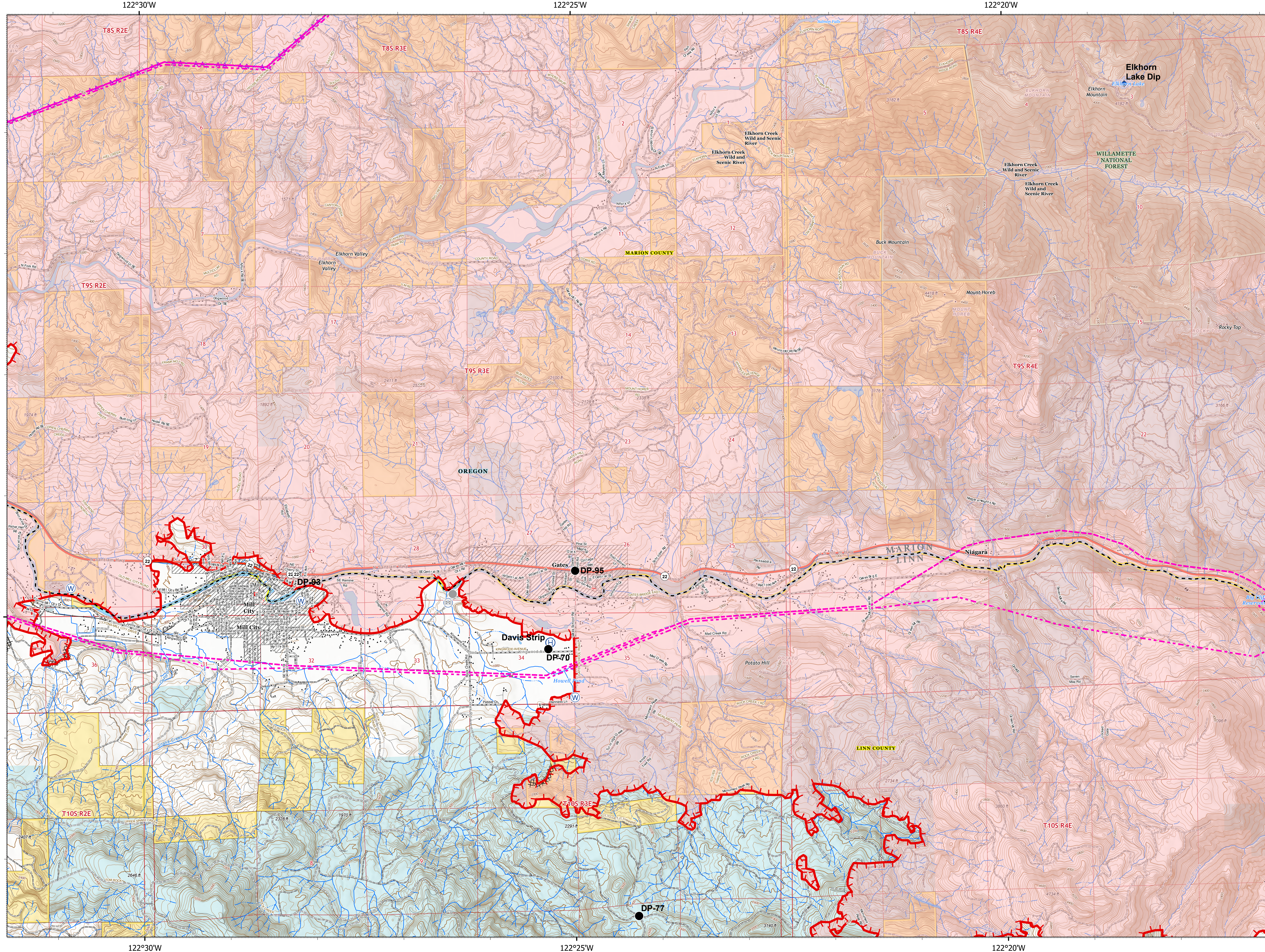


Page 7 of 15

- | | |
|---------------------------------|-----------------------------|
| XX Completed Dozer Line | ✚ Airstrip |
| — Aerial Hazard | — Airport Runway |
| — Uncontrolled Fire Edge | — Controlled access |
| — Wildlife Daily Fire Perimeter | — Highway or ramp |
| — Bureau of Land Management | — Local connector |
| — U.S. Forest Service | — Local or 4WD road |
| — Other Federal | — Tunnel |
| — State | — Ferry |
| — Local Government | — Highway or ramp |
| — Private/Unknown | — Local or 4WD road |
| — State Highway | — Highway or ramp |
| — Bridge | — Local or 4WD road |
| — Dip Site | — Railroad |
| — Drop Point | — Alaska Pipeline |
| — Helibase | — Gaging Station |
| — Water Source | — Perennial Stream |
| — Other | — Non-perennial Stream |
| — Completed Dozer Line | — Canal/Ditch |
| — Aerial Hazard | — Rapids/Waterfall |
| — Uncontrolled Fire Edge | — Perennial Lake |
| — Wildlife Daily Fire Perimeter | — Swamp, Marsh |
| — State Highway | — Perennial Lake |
| — County Road | — Dam |
| — BLM Road | — State or Territory |
| — Federal Road | — County or Equivalent |
| — Municipal Road | — Forest Service |
| — Private Road | — Bureau of Land Management |
| — Other Road | — Index |
| — County Boundary | — Intermediate |
| — City Limits | — Depression Index |
| — County Structures | — Depression Intermediate |
| — Place Name | — Tin Ring |
| — Fire Station | — Section |
| — Law Enforcement | — Quad frame |
| | — BPA Transmission Lines |



9/14/2020 2013
Acres from IR
North American 1983 Datum, Lat/Long Grid



122°30'W

122°25'W

122°20'W

44°15'N