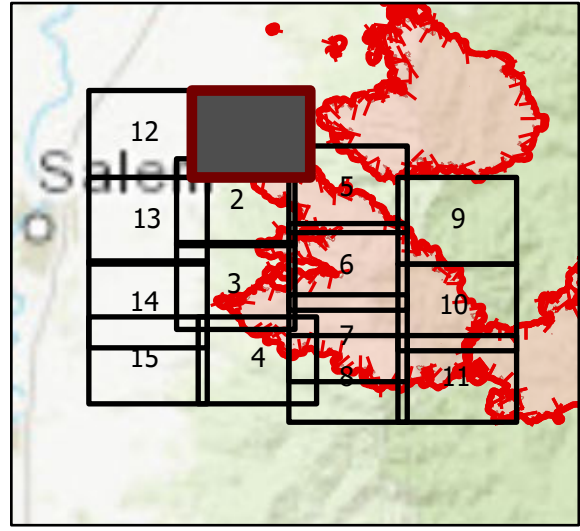


OPS Tile 1

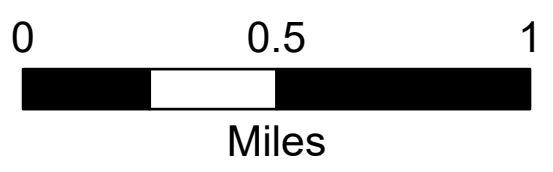
Beachie Creek Fire
ORWIF-200299
09/15/2020 24hr

190,138 acres at
09/13/20 @ 2200

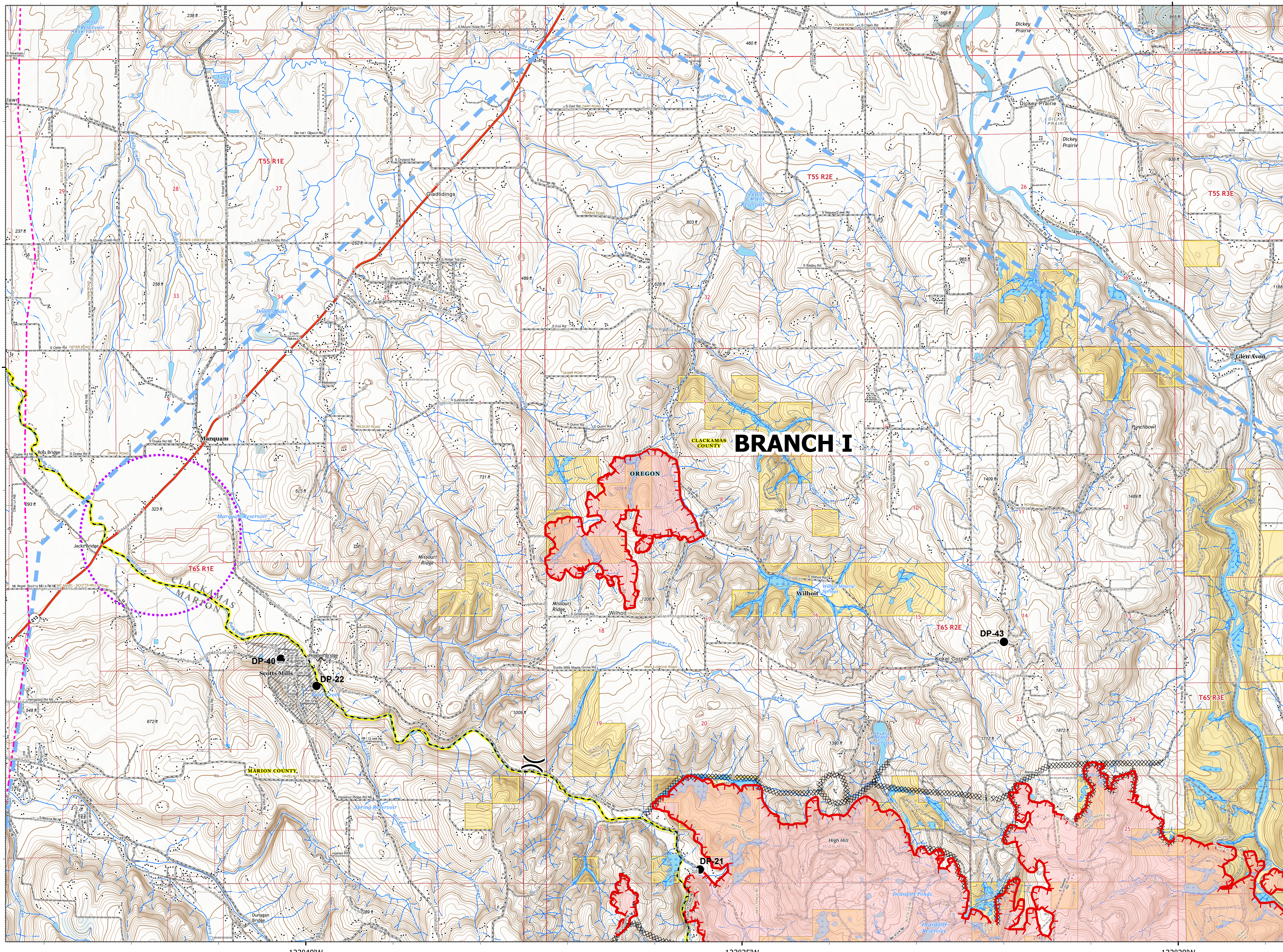


Page 1 of 15

- | | |
|---|---------------------------|
| XX Completed Dozer Line | City Limits |
| H Completed Hand Line | County Structures |
| R Road as Completed Line | Place Name |
| Blue Dashed Line Temporary Flight Restriction | Fire Station |
| US Launch and Recovery Zone | Uncontrolled Fire Edge |
| Wildfire Daily Fire Perimeter | Controlled access |
| Bureau of Land Management | Highway or ramp |
| State | Local connector |
| Local Government | Local or 4WD road |
| Private/Unknown | Tunnel |
| State Highway | Ferry |
| Bridge | Local connector |
| Closure | Local or 4WD road |
| Drop Point | Local or 4WD road |
| Fire Station | Alaska Pipeline |
| Water Source | Spring |
| Division Break | Perennial Stream |
| Perennial Lake | Non-Perennial Stream |
| Swamp, Marsh | Non-Perennial Shore |
| Intermittent Lake | Perennial Lake |
| Perennial Lake | State or Territory |
| Road as Completed Line | County or Equivalent |
| Blue Dashed Line Temporary Flight Restriction | Bureau of Land Management |
| US Launch and Recovery Zone | Index |
| Uncontrolled Fire Edge | Intermediate |
| Wildfire Daily Fire Perimeter | County Road |
| State Highway | BLM Road |
| County Road | Private Road |
| BLM Road | Section |
| Private Road | Quad frame |
| County Boundary | EPA Transmission Lines |



9/14/2020 1945
Acres from IR
North American 1983 Datum, Lat/Long Grid



122°40'W

122°35'W

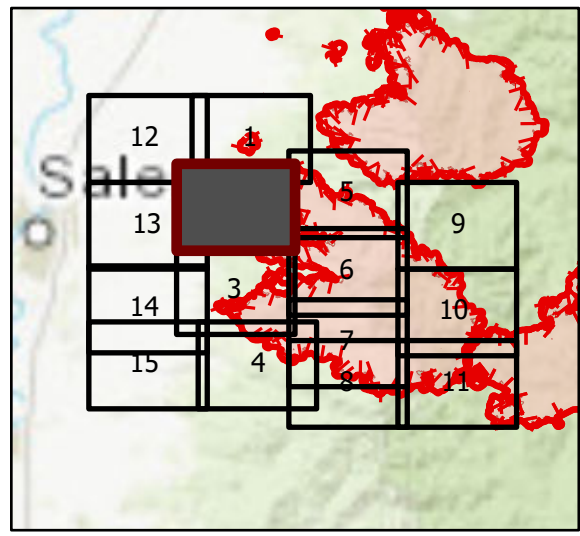
122°30'W

45°5'N

OPS Tile 2

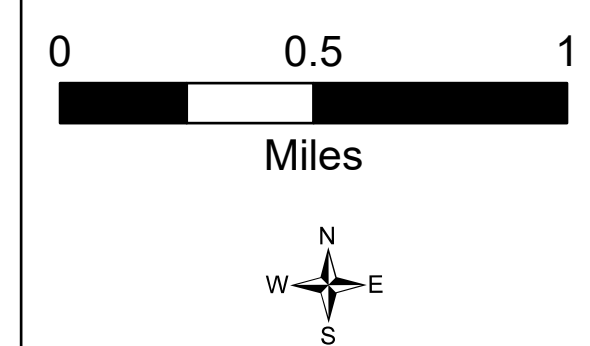
Beachie Creek Fire
ORWIF-200299
09/15/2020 24hr

190,138 acres at
09/13/20 @ 2200

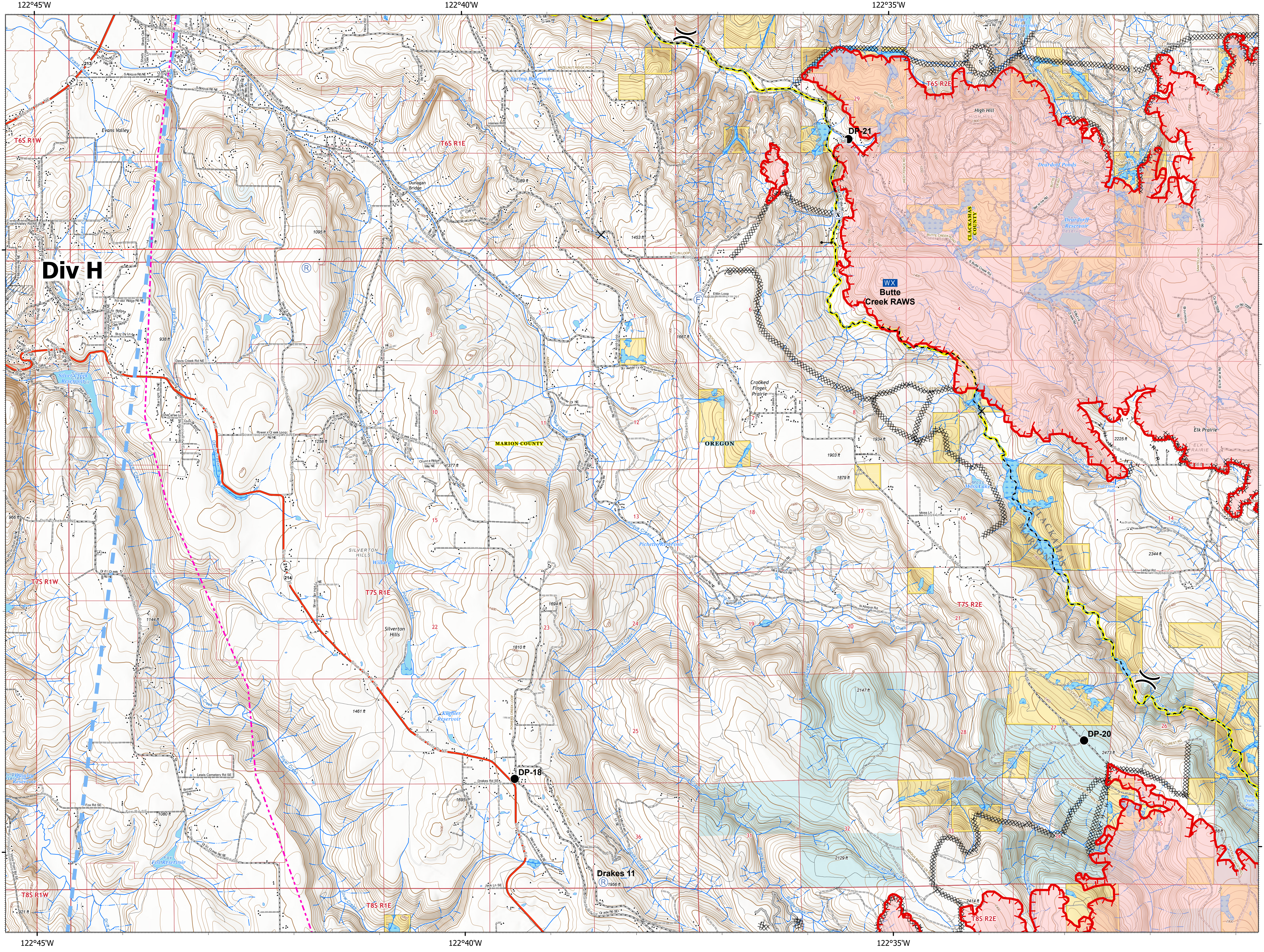


Page 2 of 15

- XX Completed Dozer Line
- H Completed Hand Line
- R Road as Completed Line
- Access or Improved Road
- Temporary Flight Restriction
- Uncontrolled Fire Edge
- Wildfire Daily Fire Perimeter
- Bureau of Land Management
- State
- Private/Unknown
- State Highway
- Bridge
- Closure
- Drop Point
- Fire Station
- Gate
- Mobile Weather Unit
- Repeater
- Water Source
- Division Break
- Completed Dozer Line
- Completed Hand Line
- Road as Completed Line
- Access or Improved Road
- Temporary Flight Restriction
- Uncontrolled Fire Edge
- Wildfire Daily Fire Perimeter
- State Highway
- County Road
- BLM Road
- Private Road
- Other Road
- County Boundary
- City Limits
- County Structures
- Place Name
- Fire Station
- Apprent Runway
- Controlled access
- Highway or ramp
- Local connector
- Local or 4WD road
- Local connector
- Local or 4WD road
- Local connector
- Local or 4WD road
- Alaska Pipeline
- Waterfall
- Perennial Stream
- Non-Perennial Stream
- Nonearthen Shore
- Perennial Lake
- Swamp, Marsh
- Dam
- State or Territory
- County or Equivalent
- Bureau of Land Management
- Index
- Intermediate
- Depression Intermediate
- Twin Ring
- Section
- Quad frame
- BPA Transmission Lines



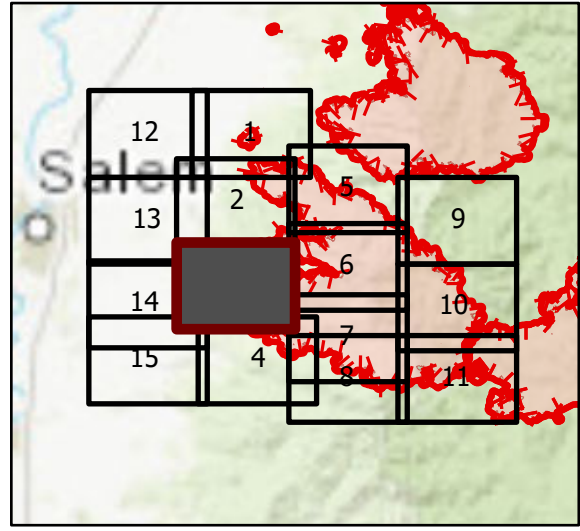
9/14/2020 1946
Acres from IR
North American 1983 Datum, Lat/Long Grid



122°45'W 122°40'W 122°35'W 44°55'N

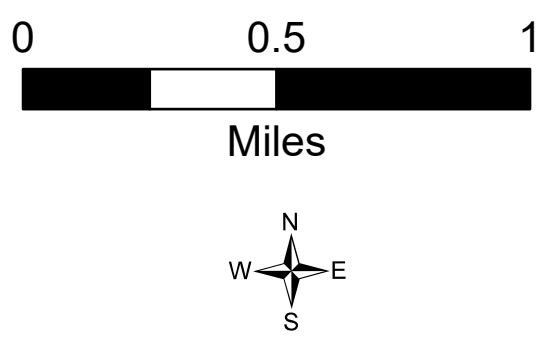
OPS Tile 3

Beachie Creek Fire
ORWIF-200299
09/15/2020 24hr
190,138 acres at
09/13/20 @ 2200

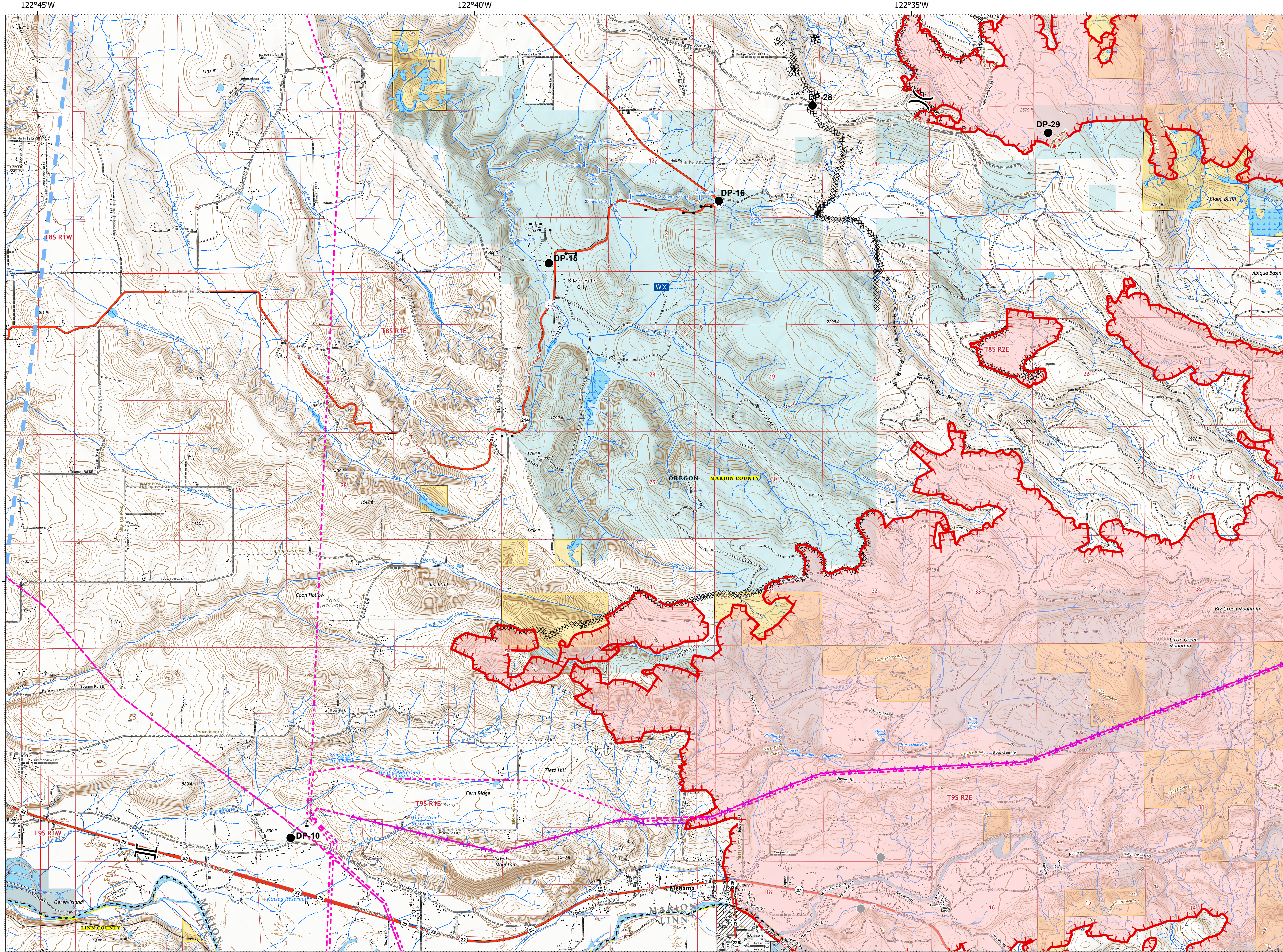


Page 3 of 15

- XX Completed Dozer Line
- H Completed Hand Line
- R Road as Completed Line
- A Access or Improved Road
- Aerial Hazard
- Temporary Flight Restriction
- Uncontrolled Fire Edge
- Wildfire Daily Fire Perimeter
- Bureau of Land Management
- State
- Local Government
- Private/Unknown
- State Highway
- Bridge
- Drop Point
- ⊕ Fire Station
- WX Mobile Weather Unit
- W Water Source
- Value at Risk
- Other
- Division Break
- Branch Break
- XX Completed Dozer Line
- H Completed Hand Line
- R Road as Completed Line
- A Access or Improved Road
- Aerial Hazard
- Temporary Flight Restriction
- Uncontrolled Fire Edge
- Wildfire Daily Fire Perimeter
- State Highway
- County Road
- BLM Road
- Municipal Road
- Private Road
- Other Road
- County Boundary
- City Limits
- County Structures
- Place Name
- Fire Station
- Airport Runway
- Controlled access
- Local connector
- State
- Local or 4WD road
- Tunnel
- Ferry
- Highway or ramp
- Local connector
- Local or 4WD road
- Highway or ramp
- Local connector
- Local or 4WD road
- Railroad
- Alaska Pipeline
- Gaging Station
- Spring
- Waterfall
- Well
- Perennial Stream
- Non-Perennial Stream
- Perennial Lake
- Swamp, Marsh
- Intermittent Lake
- Perennial Lake
- Rapids
- State or Territory
- Bureau of Land Management
- Index
- Intermediate
- Depression Index
- Depression Intermediate
- Twin Ring
- Section
- Quad frame
- BPA Transmission Lines



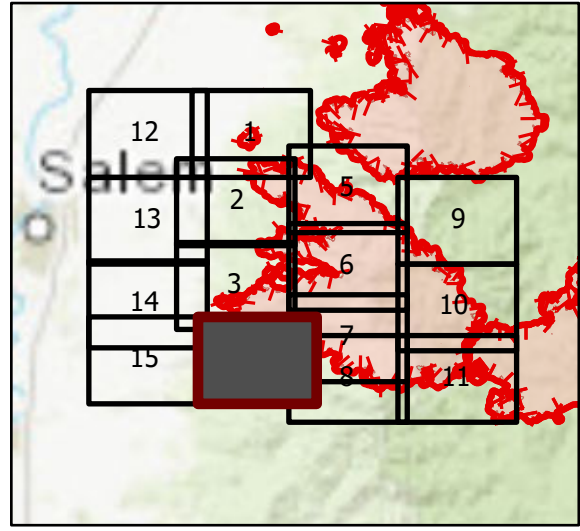
9/14/2020 1946
Acres from IR
North American 1983 Datum, Lat/Long Grid



OPS Tile 4

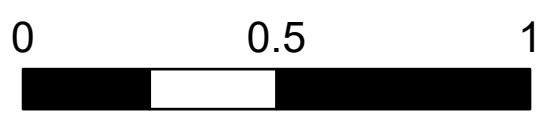
Beachie Creek Fire
ORWIF-200299
09/15/2020 24hr

190,138 acres at
09/13/20 @ 2200

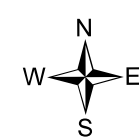


Page 4 of 15

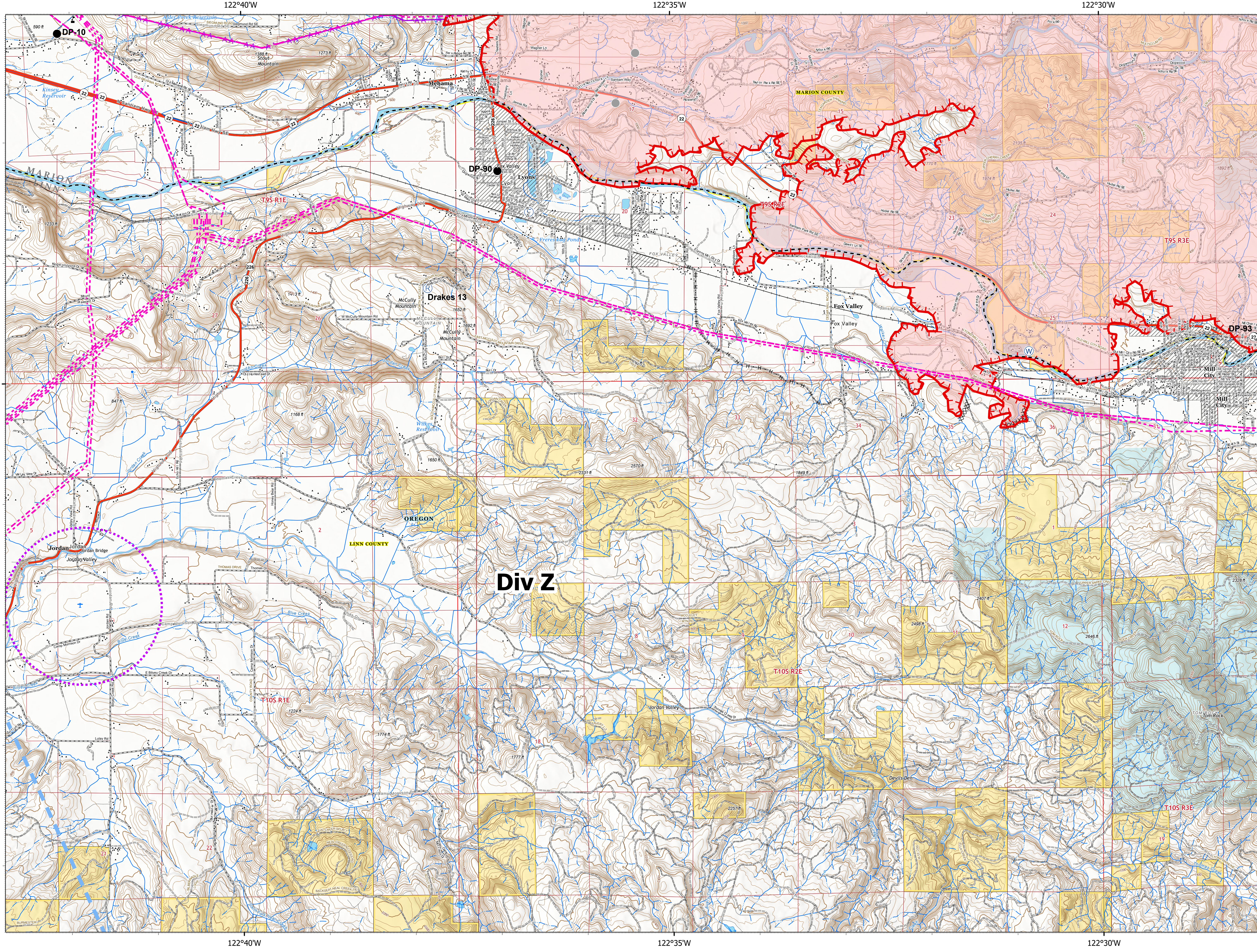
- Completed Dozer Line
- Completed Hand Line
- Aerial Hazard
- Temporary Flight Restriction
- US Launch and Recovery Zone
- Uncontrolled Fire Edge
- Wildfire Daily Fire Perimeter
- Bureau of Land Management
- Other Federal
- State
- Local Government
- Private/Unknown
- State Highway
- Drop Point
- Fire Station
- Responder
- Water Source
- Value at Risk
- Other
- Completed Dozer Line
- Completed Hand Line
- Aerial Hazard
- Temporary Flight Restriction
- US Launch and Recovery Zone
- Uncontrolled Fire Edge
- Wildfire Daily Fire Perimeter
- State Highway
- County Road
- BLM Road
- Municipal Road
- Private Road
- Other Road
- County Boundary
- City Limits
- County Structures
- Place Name
- Fire Station
- Law Enforcement
- Airstrip
- Airport Runway
- Controlled access
- Highway or ramp
- Local connector
- Local or 4WD road
- Tunnel
- Ferry
- Highway or ramp
- Local connector
- Local or 4WD road
- Highway or ramp
- Local connector
- Local or 4WD road
- Railroad
- Alaska Pipeline
- Gaging Station
- Spring
- Waterfall
- Perennial Stream
- Non-Perennial Stream
- Canal/Ditch
- Perennial Lake
- Swamp, Marsh
- Intermittent Lake
- Perennial Lake
- Roads
- State or Territory
- County or Equivalent
- Bureau of Land Management
- Index
- Intermediate
- Depression Index
- Depression Intermediate
- Twin Rng
- Section
- Quad frame
- BPA Transmission Lines



Miles



9/14/2020 1947
Acres from IR
North American 1983 Datum, Lat/Long Grid



Div Z

122°40'W

122°35'W

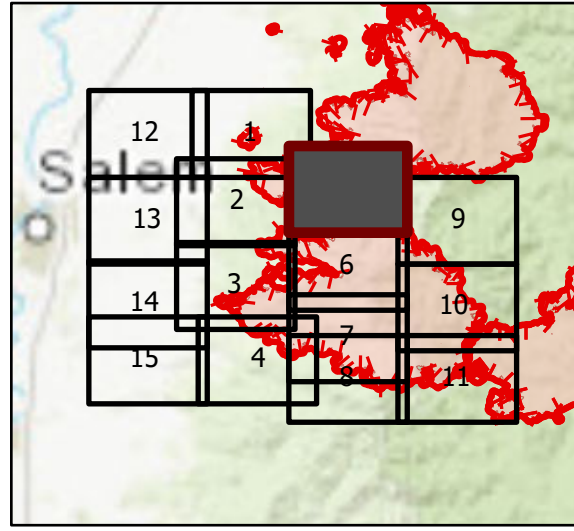
122°30'W

44°45'N

OPS Tile 5

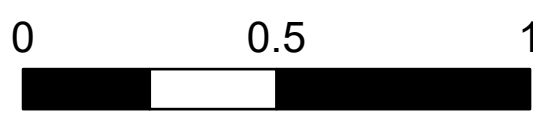
Beachie Creek Fire
ORWIF-200299
09/15/2020 24hr

190,138 acres at
09/13/20 @ 2200



Page 5 of 15

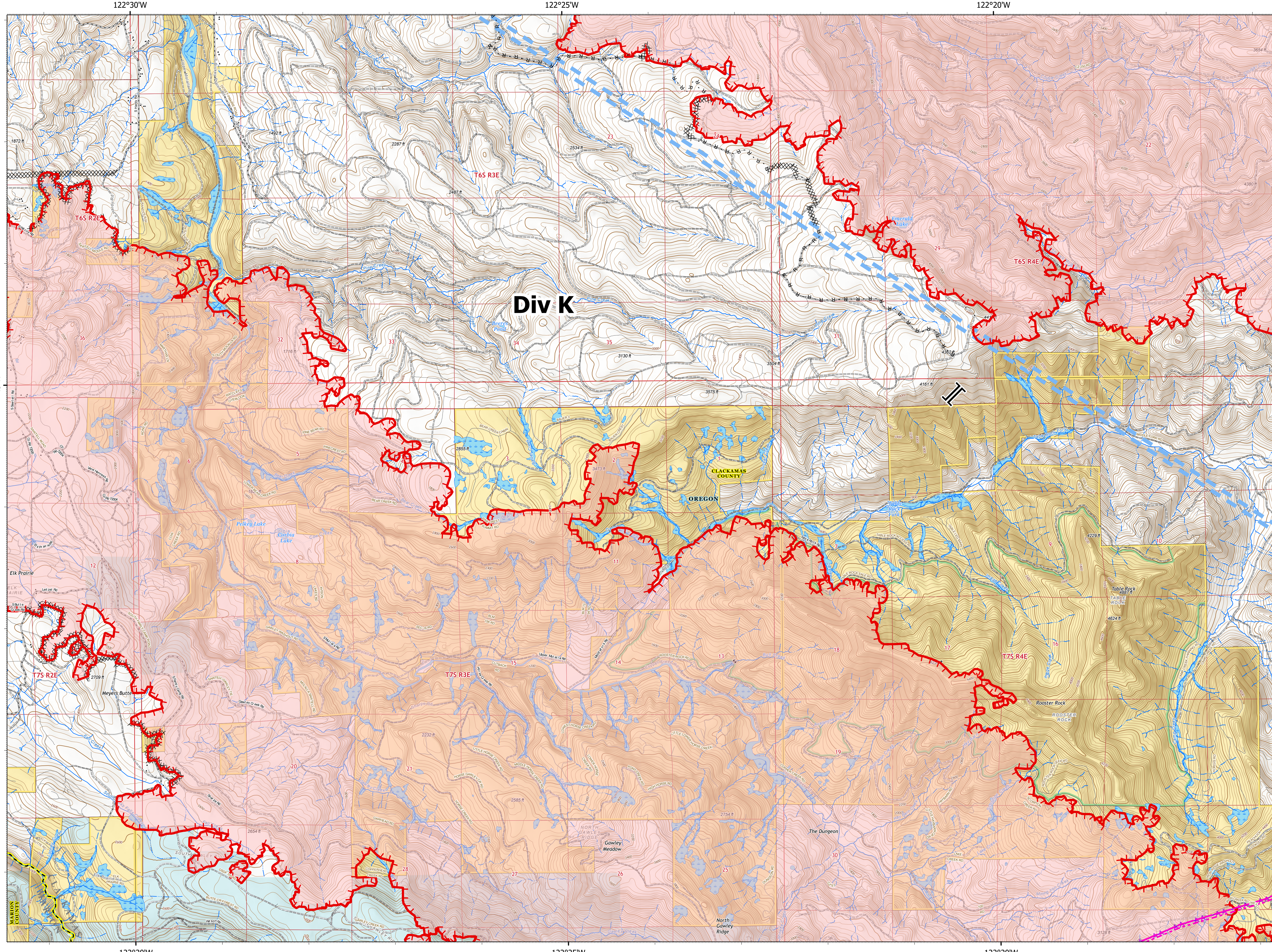
- Completed Dozer Line
- Completed Hand Line
- Road as Completed Line
- Aerial Hazard
- Temporary Flight Restriction
- Uncontrolled Fire Edge
- Wildfire Daily Fire Perimeter
- Bureau of Land Management
- State
- Private/Unknown
- Branch Break
- Completed Dozer Line
- Completed Hand Line
- Road as Completed Line
- Aerial Hazard
- Temporary Flight Restriction
- Uncontrolled Fire Edge
- Wildfire Daily Fire Perimeter
- County Road
- BLM Road
- Private Road
- Other Road
- County Boundary
- County Structures
- Place Name
- Airport Runway
- Controlled access
- Highway or ramp
- Local connector
- Local or 4WD road
- Tunnel
- Ferry
- Local or 4WD road
- Local or 4WD road
- Alaska Pipeline
- Gaging Station
- Perennial Stream
- Non-Perennial Stream
- Perennial Lake
- Swamp, Marsh
- Intermittent Lake
- Perennial Lake
- State or Territory
- County or Equivalent
- Wilderness
- Bureau of Land Management
- Index
- Intermediate
- Depression Intermediate
- Thin Ring
- Section
- Quad frame
- BPA Transmission Lines



Miles



9/14/2020 1948
Acres from IR
North American 1983 Datum, Lat/Long Grid



122°30'W

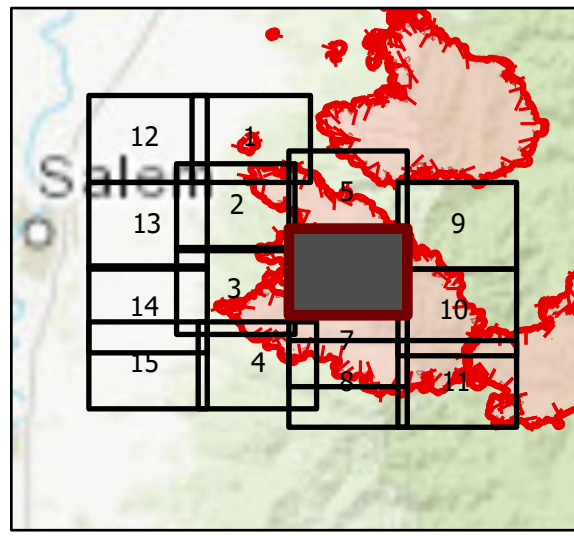
122°25'W

122°20'W

OPS Tile 6

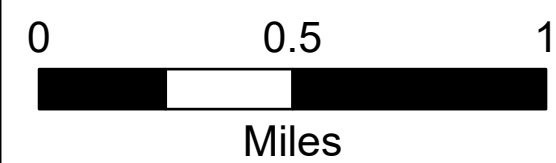
Beachie Creek Fire
ORWIF-200299
09/15/2020 24hr

190,138 acres at
09/13/20 @ 2200

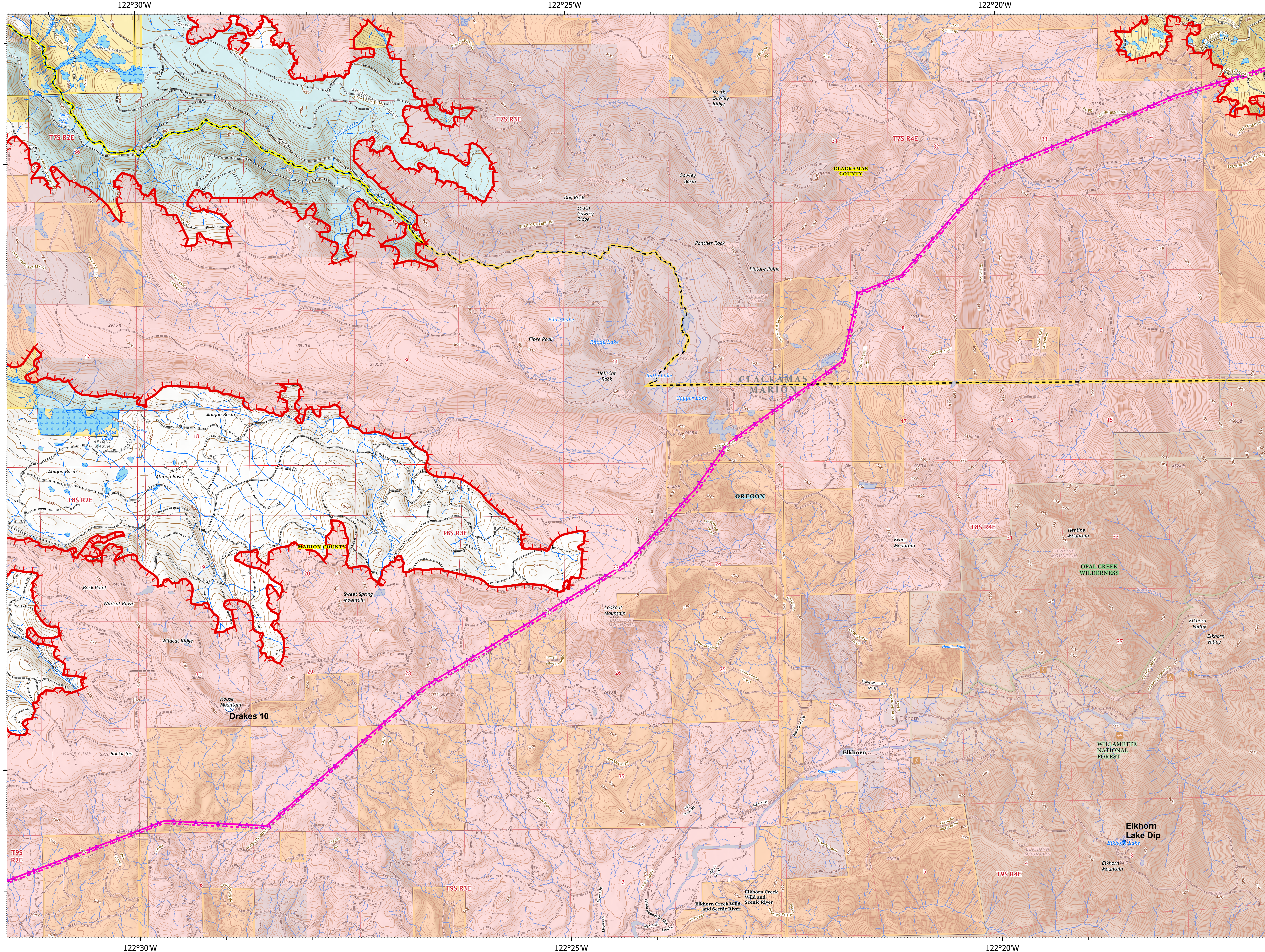


Page 6 of 15

- XX Completed Dozer Line
- Uncontrolled Fire Edge
- Wildfire Daily Fire Perimeter
- Bureau of Land Management
- U.S. Forest Service
- State
- Private/Unknown
- Dip Site
- Separator
- Completed Dozer Line
- Aerial Hazard
- Uncontrolled Fire Edge
- Wildfire Daily Fire Perimeter
- County Road
- BLM Road
- Federal Road
- Private Road
- Other Road
- County Boundary
- County Structures
- Place Name
- Fire Station
- Campground
- Trailhead
- Picnic Area
- Airport Runway
- Controlled access
- Highway or ramp
- Local connector
- Local or 4WD road
- Tunnel
- Ferry
- Local or 4WD road
- Local or 4WD road
- Local or 4WD road
- Alaska Pipeline
- Waterfall
- Perennial Stream
- Non-Perennial Stream
- Rapids/Waterfall
- Perennial Lake
- Swamp, Marsh
- Intermittent Lake
- Perennial Lake
- State or Territory
- County or Equivalent
- Wilderness
- Forest Service
- Bureau of Land Management
- Index
- Intermediate
- Depression Index
- Depression Intermediate
- Twin Ring
- Section
- Quad frame
- BPA Transmission Lines



9/14/2020 1949
Acres from IR
North American 1983 Datum, Lat/Long Grid



122°30'W

122°25'W

122°20'W

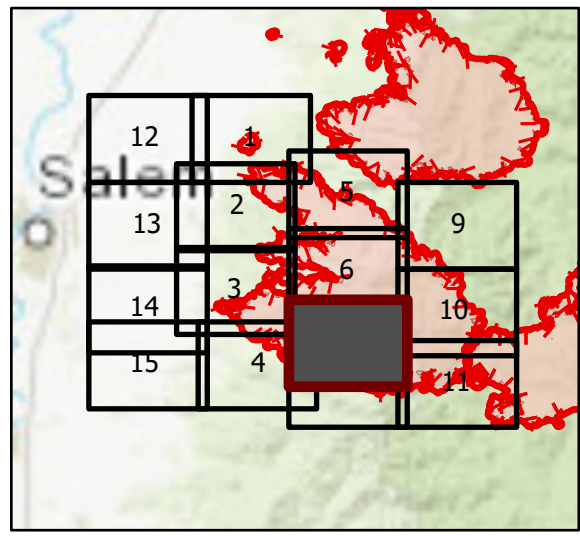
49°55'N

49°55'N

OPS Tile 7

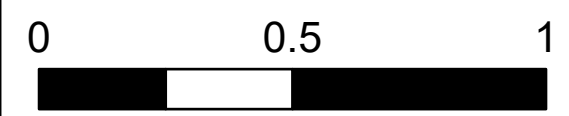
Beachie Creek Fire
ORWIF-200299
09/15/2020 24hr

190,138 acres at
09/13/20 @ 2200



Page 7 of 15

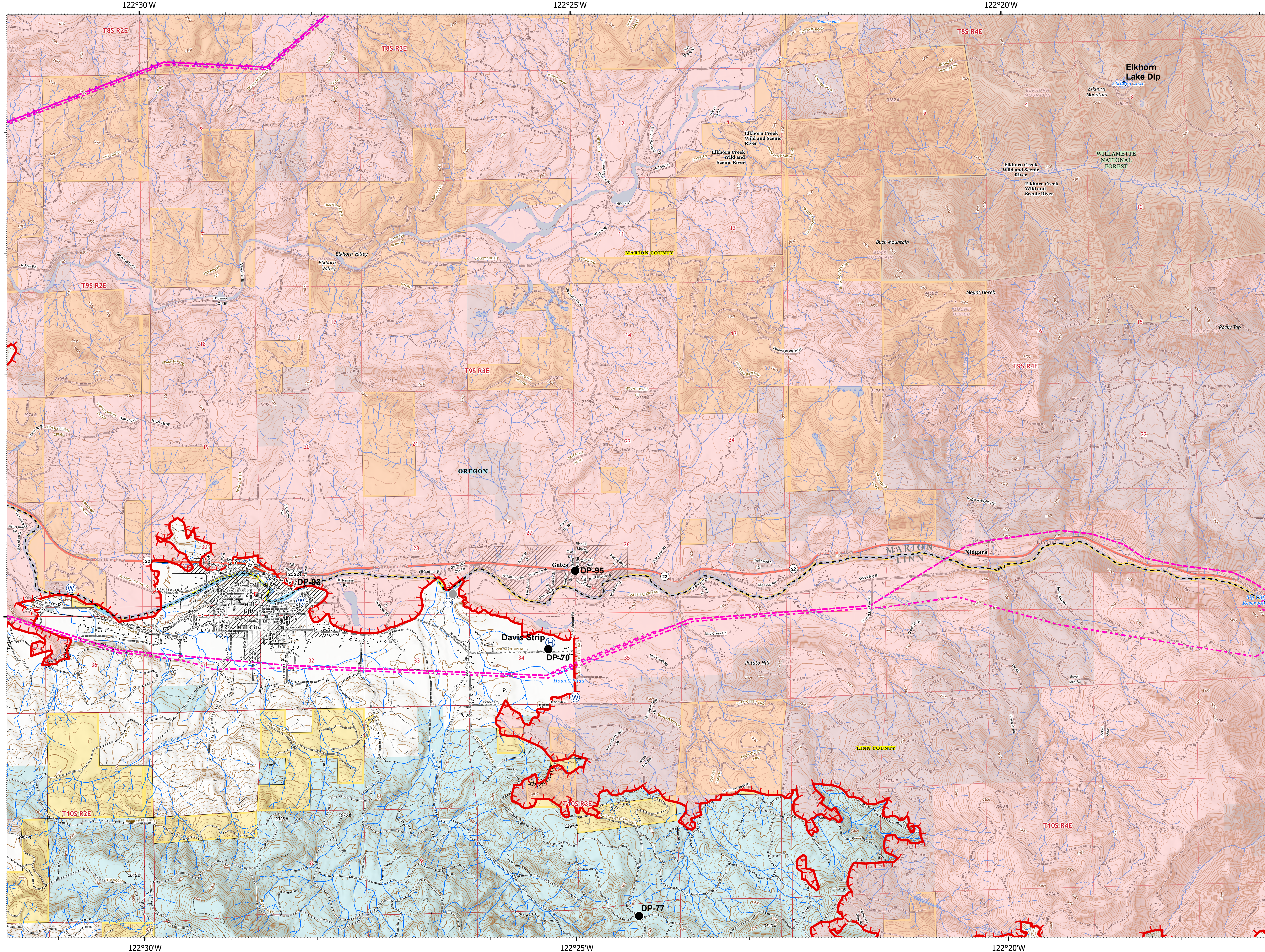
- XX Completed Dozer Line
- Aerial Hazard
- Uncontrolled Fire Edge
- Wildfire Daily Fire Perimeter
- Bureau of Land Management
- U.S. Forest Service
- Other Federal
- State
- Local Government
- Private/Unknown
- State Highway
- Bridge
- Dip Site
- Drop Point
- Helibase
- Water Source
- Other
- Completed Dozer Line
- Aerial Hazard
- Uncontrolled Fire Edge
- Wildfire Daily Fire Perimeter
- State Highway
- County Road
- BLM Road
- Federal Road
- Municipal Road
- Private Road
- Other Road
- County Boundary
- City Limits
- County Structures
- Place Name
- Fire Station
- Law Enforcement
- Airstrip
- Airport Runway
- Controlled access
- Highway or ramp
- Local connector
- Local or 4WD road
- Tunnel
- Ferry
- Highway or ramp
- Local or 4WD road
- Highway or ramp
- Local or 4WD road
- Railroad
- Alaska Pipeline
- Gaging Station
- Perennial Stream
- Non-perennial Stream
- Canal/Ditch
- Rapids/Waterfall
- Perennial Lake
- Swamp, Marsh
- Perennial Lake
- Dam
- State or Territory
- County or Equivalent
- Forest Service
- Bureau of Land Management
- Index
- Intermediate
- Depression Index
- Depression Intermediate
- Tin Ring
- Section
- Quad frame
- BPA Transmission Lines



Miles



9/14/2020 1950
Acres from IR
North American 1983 Datum, Lat/Long Grid



122°30'W

122°25'W

122°20'W

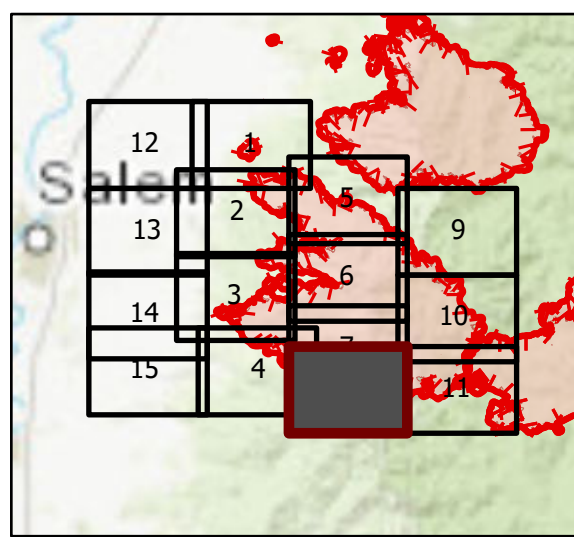
44°51'N

44°45'N

OPS Tile 8

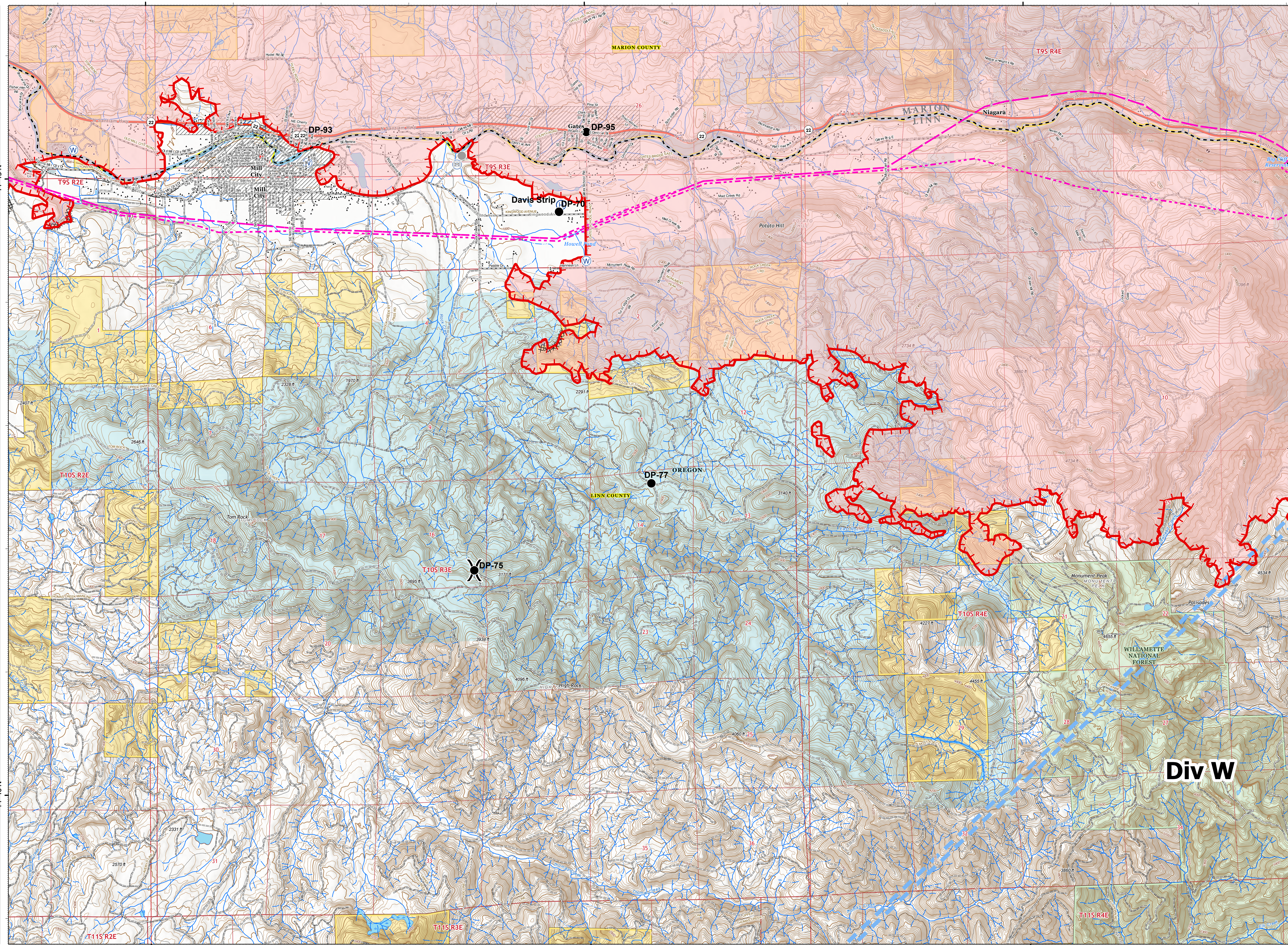
Beachie Creek Fire
ORWIF-200299
09/15/2020 24hr

190,138 acres at
09/13/20 @ 2200

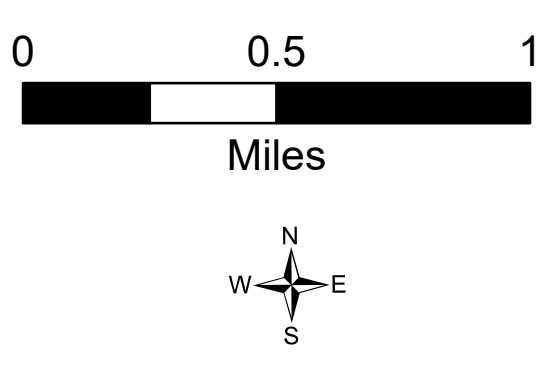


Page 8 of 15

- Completed Dozer Line
- Temporary Flight Restriction
- Uncontrolled Fire Edge
- Wildfire Daily Fire Perimeter
- Bureau of Land Management
- U.S. Forest Service
- Other Federal
- State
- Local Government
- Private/Unknown
- State Highway
- Bridge
- Drop Point
- Helibase
- Water Source
- Other
- Division Break
- Completed Dozer Line
- Temporary Flight Restriction
- Uncontrolled Fire Edge
- Wildfire Daily Fire Perimeter
- State Highway
- County Road
- BLM Road
- Federal Road
- Municipal Road
- Private Road
- Other Road
- County Boundary
- City Limits
- County Structures
- Place Name
- Fire Station
- Law Enforcement
- Airstrip
- Apprent Runway
- Controlled access
- Highway or ramp
- Local connector
- Local or 4WD road
- Tunnel
- Ferry
- Highway or ramp
- Local or 4WD road
- Highway or ramp
- Local or 4WD road
- Railroad
- Alaska Pipeline
- Gaging Station
- Waterfall
- Perennial Stream
- Non-Perennial Stream
- Canal/Ditch
- Perennial Lake
- Swamp, Marsh
- Intermittent Lake
- Perennial Lake
- Dam
- State or Territory
- County or Equivalent
- Forest Service
- Bureau of Land Management
- Index
- Intermediate
- Depression Index
- Depression Intermediate
- Twin Ring
- Section
- Quad frame
- BPA Transmission Lines



Div W

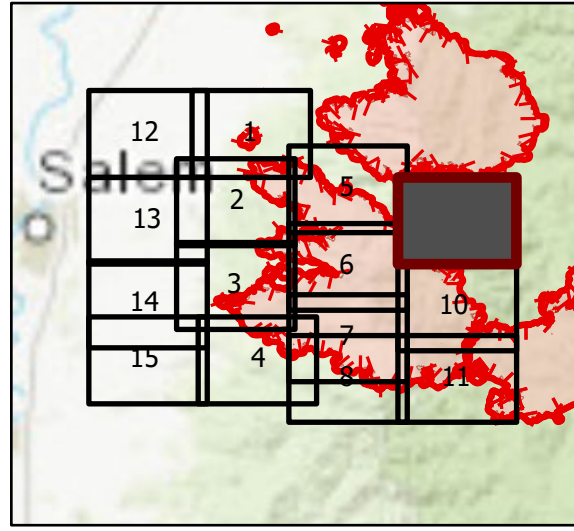


9/14/2020 1951
Acres from IR
North American 1983 Datum, Lat/Long Grid

OPS Tile 9

Beachie Creek Fire
ORWIF-200299
09/15/2020 24hr

190,138 acres at
09/13/20 @ 2200



Page 9 of 15

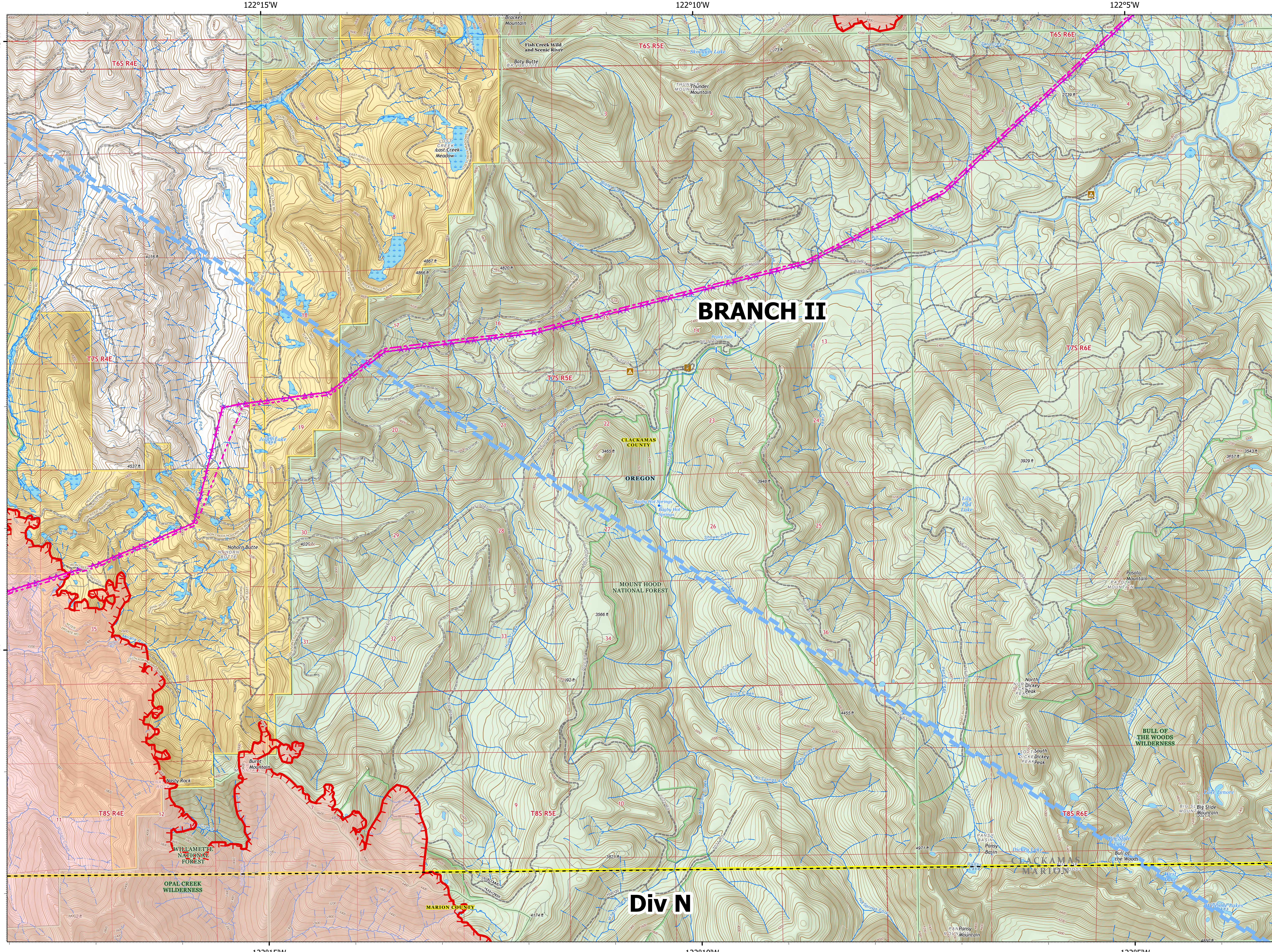
- Aerial Hazard
- Temporary Flight Restriction
- Uncontrolled Fire Edge
- Wildfire Daily Fire Perimeter
- Bureau of Land Management
- U.S. Forest Service
- Private/Unknown
- Aerial Hazard
- Temporary Flight Restriction
- Uncontrolled Fire Edge
- Wildfire Daily Fire Perimeter
- BLM Road
- Federal Road
- Private Road
- County Boundary
- County Structures
- Place Name
- Campground
- Trailhead
- Airport Runway
- Controlled access
- Highway or ramp
- Local connector
- Local or 4WD road
- Tunnel
- Ferry
- Local or 4WD road
- Local or 4WD road
- Alaska Pipeline
- Spring
- Waterfall
- Perennial Stream
- Non-Perennial Stream
- Perennial Lake
- Swamp, Marsh
- Intermittent Lake
- Perennial Lake
- Wash
- State or Territory
- County or Equivalent
- Wilderness
- Forest Service
- Bureau of Land Management
- Index
- Intermediate
- Depression Index
- Depression Intermediate
- Twin Ring
- Section
- Quad frame
- BPA Transmission Lines

0 0.5 1

Miles



9/14/2020 1951
Acres from IR
North American 1983 Datum, Lat/Long Grid



BRANCH II

Div N

122°15'W

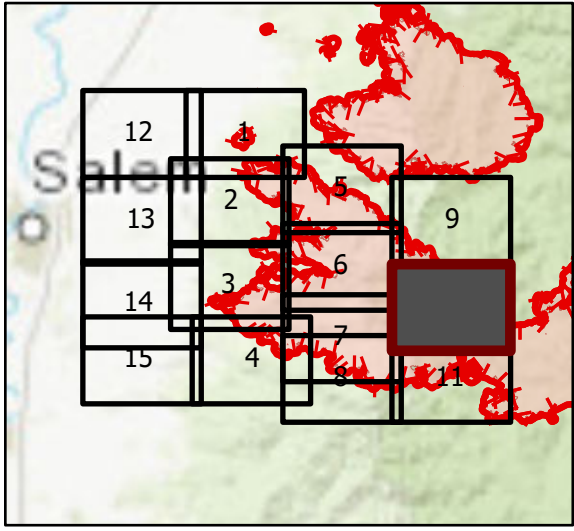
122°10'W

122°5'W

44°55'N

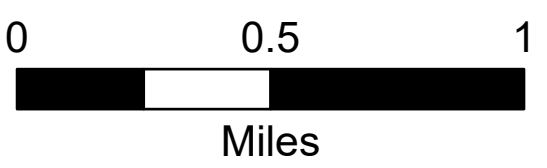
OPS Tile 10

Beachie Creek Fire
ORWIF-200299
09/15/2020 24hr
190,138 acres at
09/13/20 @ 2200

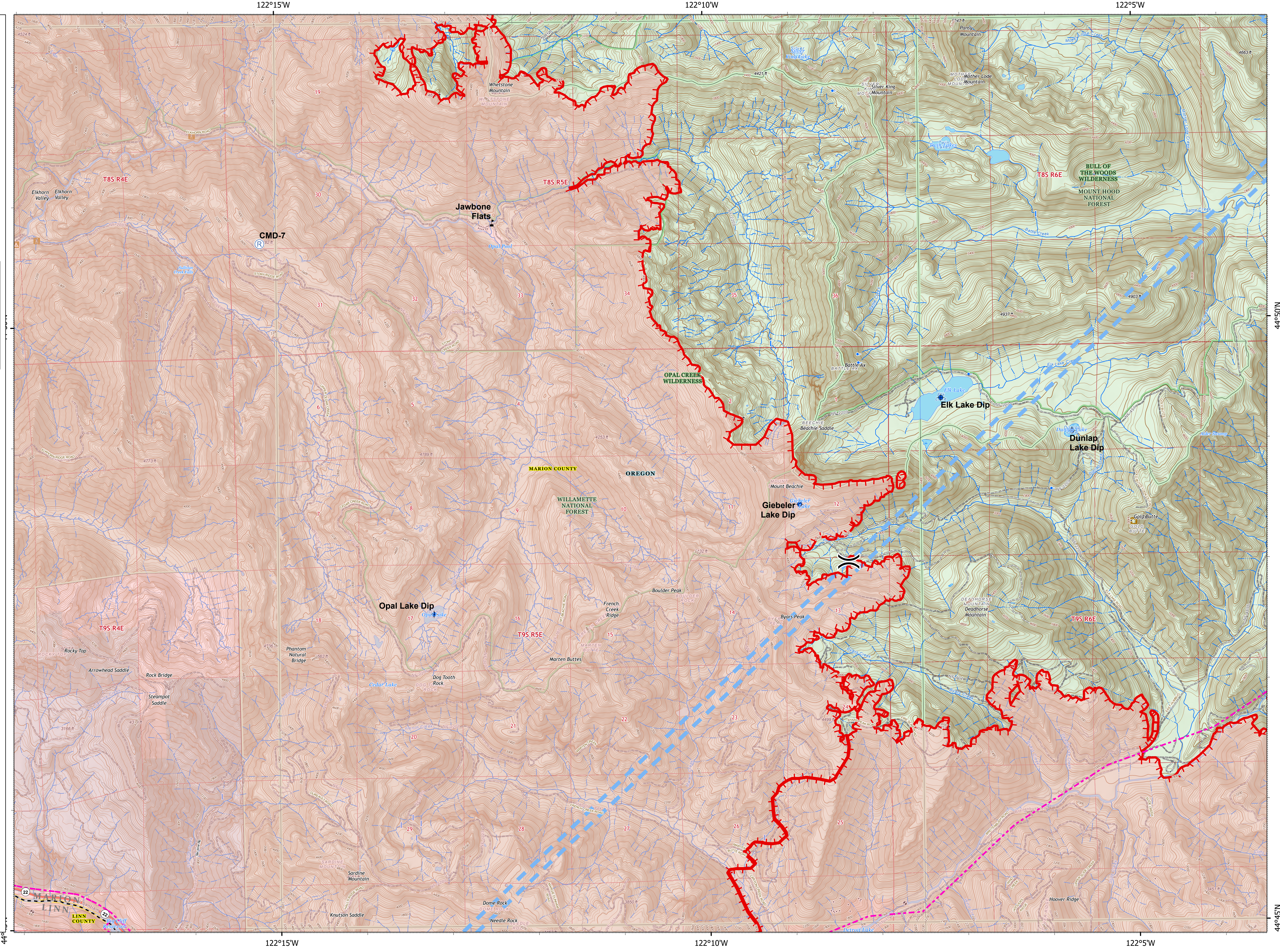


Page 10 of 15

- Temporary Flight Restriction
- Uncontrolled Fire Edge
- Wildfire Daily Fire Perimeter
- U.S. Forest Service
- Other Federal
- State
- Local Government
- Private/Unknown
- State Highway
- Dip Site
- Repeater
- Value at Risk
- Division Break
- Temporary Flight Restriction
- Uncontrolled Fire Edge
- Wildfire Daily Fire Perimeter
- State Highway
- Federal Road
- Private Road
- County Boundary
- County Structures
- Place Name
- Campground
- Cabin
- Trailhead
- Airport Runway
- Controlled access
- Highway or ramp
- Local connector
- Local or 4WD road
- Tunnel
- Ferry
- Highway or ramp
- Local or 4WD road
- Highway or ramp
- Local or 4WD road
- Alaska Pipeline
- Gaging Station
- Spring
- Waterfall
- Perennial Stream
- Non-Perennial Stream
- Perennial Lake
- Swamp, Marsh
- Intermittent Lake
- Perennial Lake
- Dam
- State or Territory
- County or Equivalent
- Wilderness
- Forest Service
- Index
- Intermediate
- Depression Intermediate
- Twin Ring
- Section
- Quad frame
- BPA Transmission Lines



9/14/2020 1952
Acres from IR
North American 1983 Datum, Lat/Long Grid



44°50'N

122°15'W

122°10'W

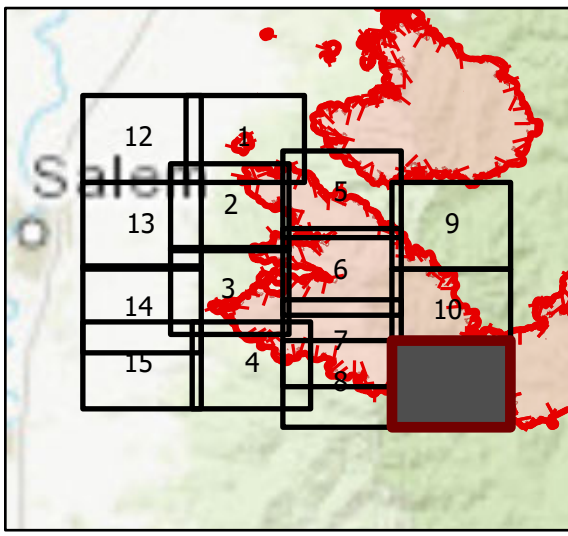
122°5'W

44°50'N

44°50'N

OPS Tile 11

Beachie Creek Fire
ORWIF-200299
09/15/2020 24hr
190,138 acres at
09/13/20 @ 2200



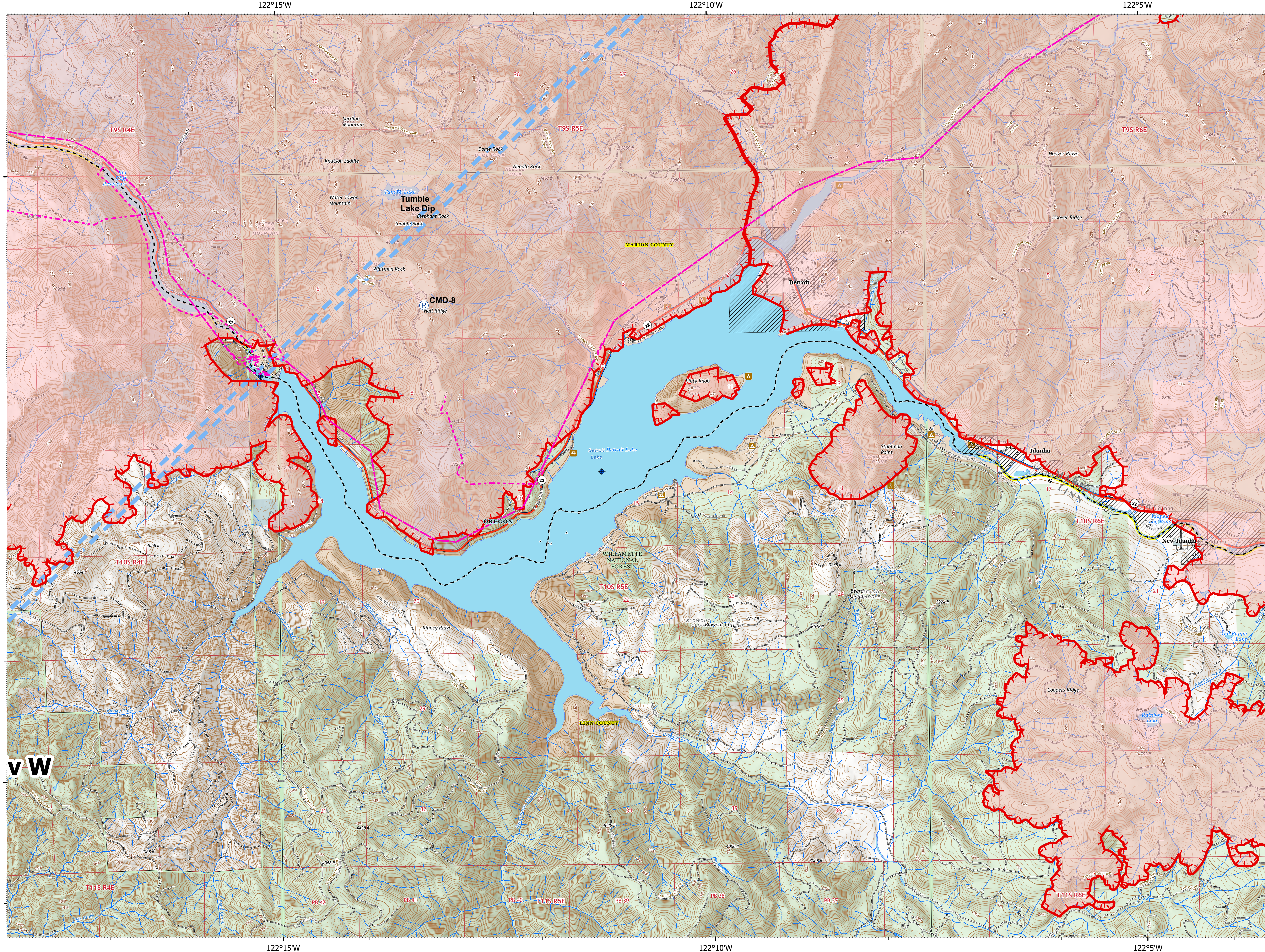
Page 11 of 15

- | | |
|-------------------------------|-------------------------|
| Temporary Flight Restriction | Highway or ramp |
| Uncontrolled Fire Edge | Local connector |
| Wildfire Daily Fire Perimeter | Local or 4WD road |
| U.S. Forest Service | Tunnel |
| Other Federal | Ferry |
| State | Highway or ramp |
| Local Government | Local or 4WD road |
| Private/Unknown | Highway or ramp |
| State Highway | Local or 4WD road |
| Dip Site | Alaska Pipeline |
| Repeater | Waterfall |
| Temporary Flight Restriction | Perennial Stream |
| Uncontrolled Fire Edge | Non-Perennial Stream |
| Wildfire Daily Fire Perimeter | Perennial Lake |
| State Highway | Swamp, Marsh |
| Federal Road | Intermittent Lake |
| Private Road | Perennial Lake |
| County Boundary | Dam |
| City Limits | State or Territory |
| County Structures | County or Equivalent |
| Place Name | Forest Service |
| Fire Station | Index |
| Campground | Intermediate |
| Ranger Station | Depression Index |
| Trailhead | Depression Intermediate |
| Picnic Area | Twin Ring |
| Airport Runway | Section |
| Controlled access | Quad frame |
| | BPA Transmission Lines |

0 0.5 1
Miles



9/14/2020 1953
Acres from IR
North American 1983 Datum, Lat/Long Grid



122°15'W

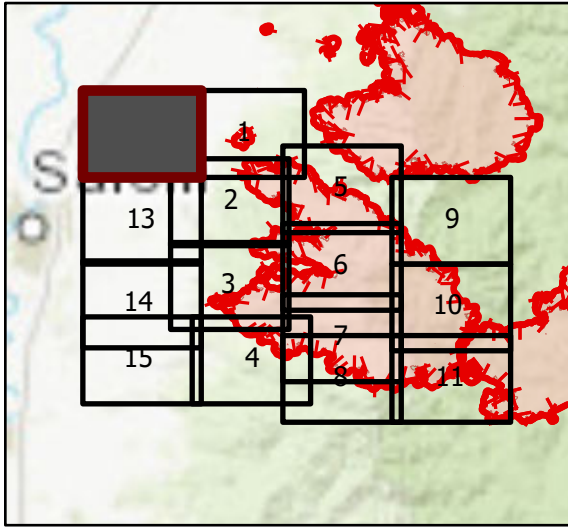
122°10'W

122°5'W

44°40'N

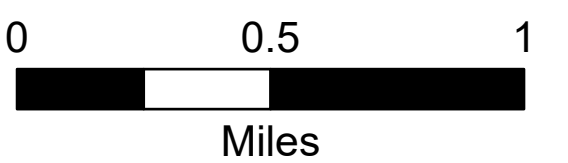
OPS Tile 12

Beachie Creek Fire
ORWIF-200299
09/15/2020 24hr
190,138 acres at
09/13/20 @ 2200

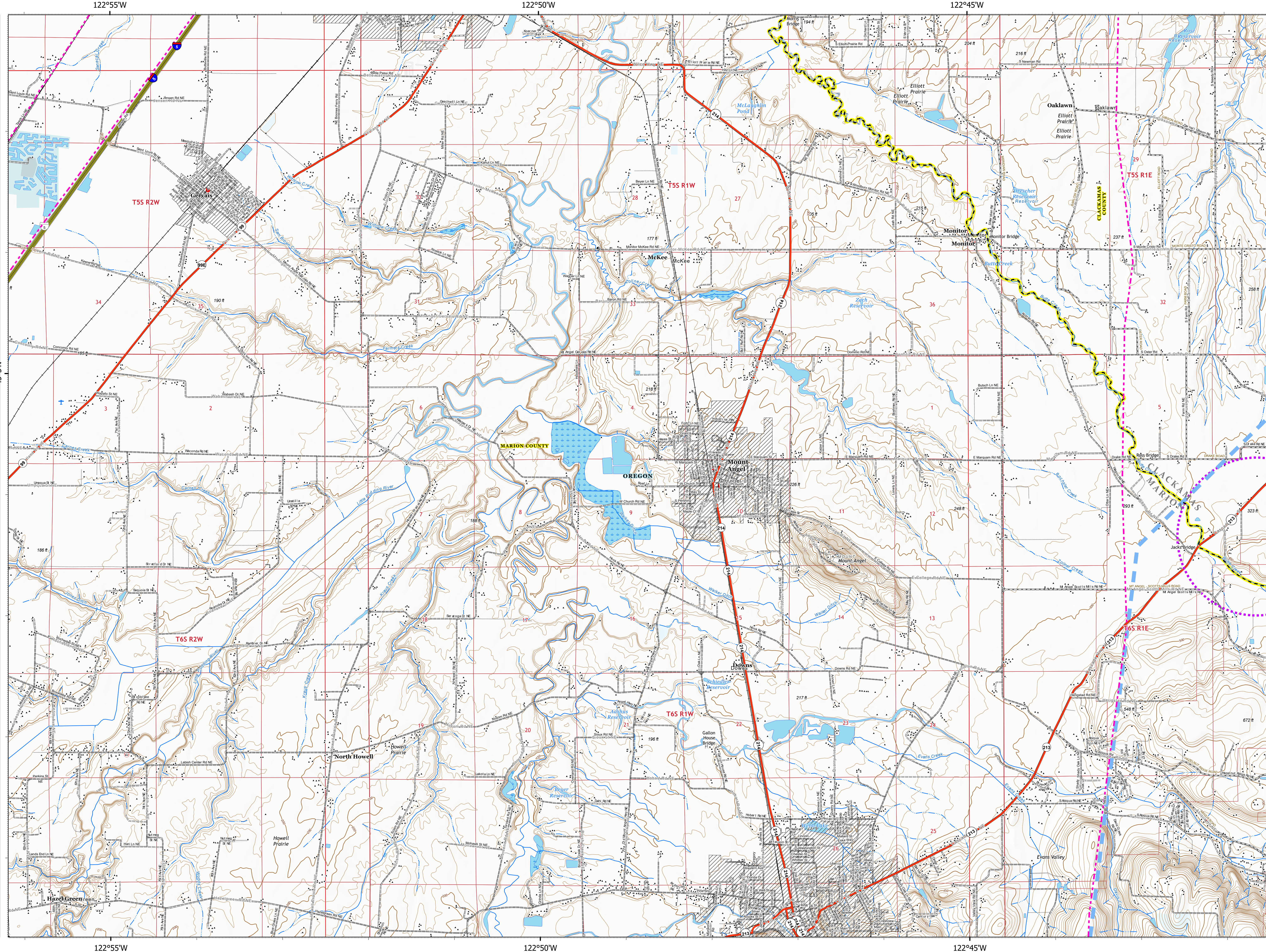


Page 12 of 15

- Temporary Flight Restriction
- UAS Launch and Recovery Zone
- State
- Local Government
- Private/Unknown
- Interstate Highway
- State Highway
- Temporary Flight Restriction
- UAS Launch and Recovery Zone
- Interstate Highway
- State Highway
- County Road
- Private Road
- County Boundary
- City Limits
- County Structures
- Place Name
- Fire Station
- Law Enforcement
- Airstrip
- Airport Runway
- Controlled access
- Highway or ramp
- Local connector
- Local or 4WD road
- Tunnel
- Ferry
- Controlled access
- Local connector
- Local or 4WD road
- Controlled access
- Local connector
- Local or 4WD road
- Railroad
- Alaska Pipeline
- Gaging Station
- Well
- Perennial Stream
- Non-Perennial Stream
- Canal/Ditch
- Nonearthen Reservoir
- Perennial Lake
- Swamp, Marsh
- Perennial Lake
- State or Territory
- County or Equivalent
- Index
- Intermediate
- Depression Intermediate
- Twin Ring
- Section
- Quad frame
- BPA Transmission Lines



9/14/2020 1954
Acres from IR
North American 1983 Datum, Lat/Long Grid



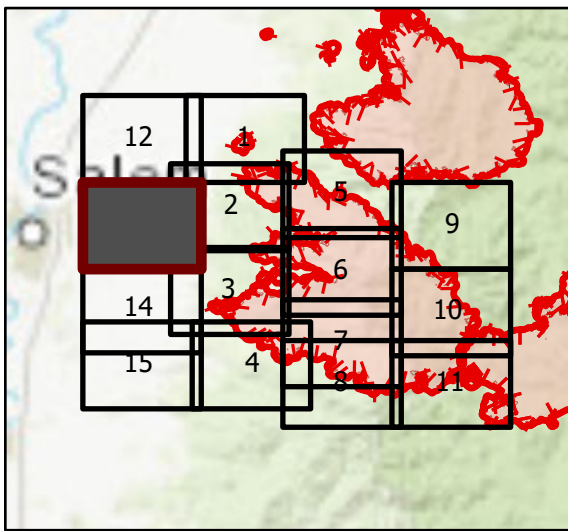
122°55'W

122°50'W

122°45'W

OPS Tile 13

Beachie Creek Fire
ORWIF-200299
09/15/2020 24hr
190,138 acres at
09/13/20 @ 2200



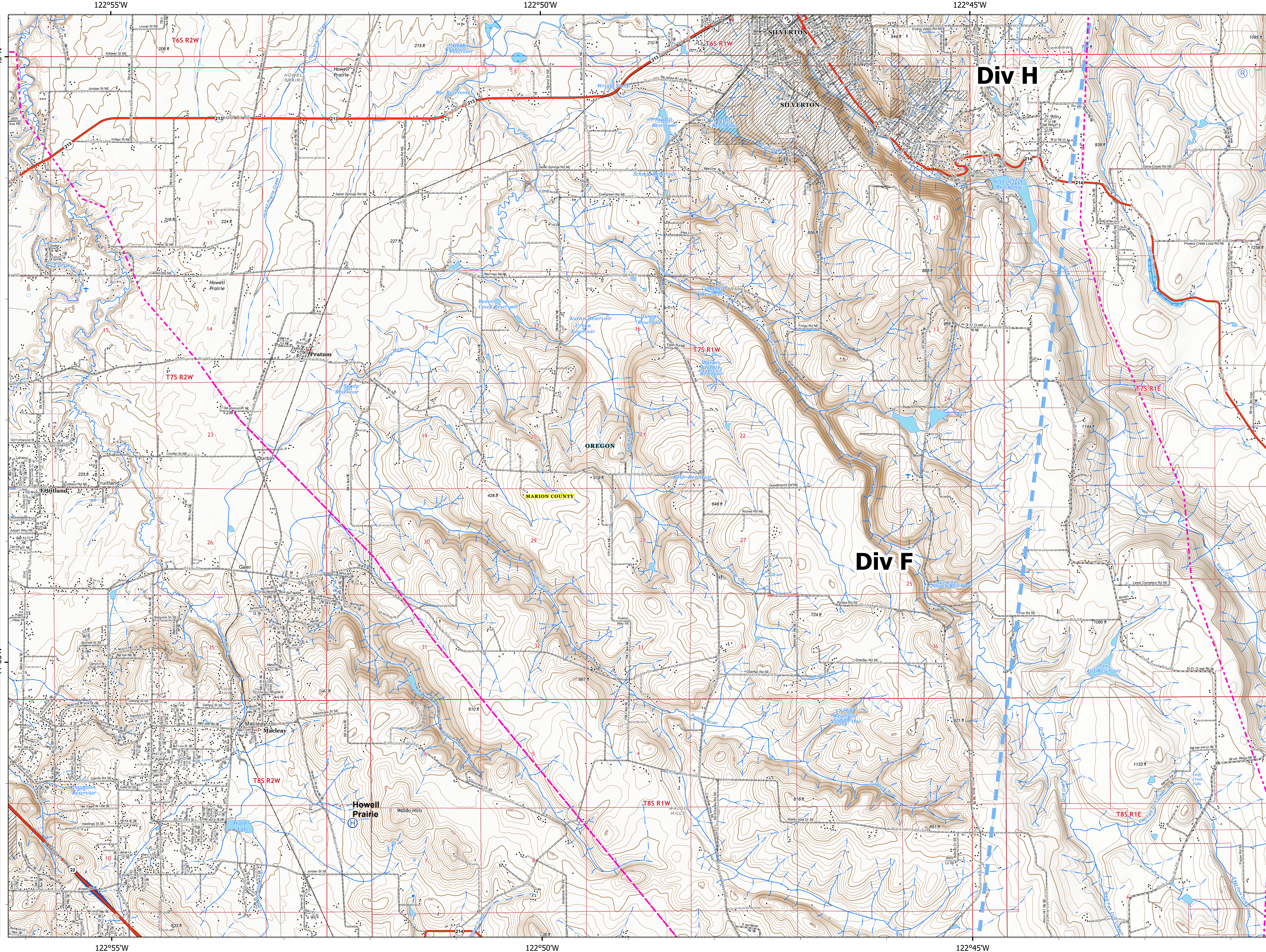
Page 13 of 15

- Temporary Flight Restriction
- Private/Unknown
- State Highway
- County Road
- Private Road
- County Boundary
- City Limits
- County Structures
- Place Name
- Hospital
- Fire Station
- Law Enforcement
- Airstrip
- Airport Runway
- Controlled access
- Highway or ramp
- Local connector
- Local or 4WD road
- Tunnel
- Ferry
- Controlled access
- Highway or ramp
- Local connector
- Local or 4WD road
- Local connector
- Local or 4WD road
- Alaska Pipeline
- Railroad
- Spring
- Waterfall
- Well
- Perennial Stream
- Non-Perennial Stream
- Nonearthen Shore
- Nonearthen Reservoir
- Perennial Lake
- Swamp, Marsh
- Intermittent Lake
- Perennial Lake
- Dam
- State or Territory
- County or Equivalent
- Index
- Intermediate
- Depression Index
- Depression Intermediate
- Twin Ring
- Section
- Quad frame
- BPA Transmission Lines
- Local or 4WD road
- Controlled access
- Highway or ramp
- Local connector
- Local or 4WD road
- Local connector
- Local or 4WD road
- Alaska Pipeline
- Railroad
- Spring
- Waterfall
- Well
- Perennial Stream
- Non-Perennial Stream
- Nonearthen Shore
- Nonearthen Reservoir
- Perennial Lake
- Swamp, Marsh
- Intermittent Lake
- Perennial Lake
- Dam
- State or Territory
- County or Equivalent
- Index
- Intermediate
- Depression Index
- Depression Intermediate
- Twin Ring
- Section
- Quad frame
- BPA Transmission Lines

0 0.5 1
Miles



9/14/2020 1955
Acres from IR
North American 1983 Datum, Lat/Long Grid



122°55'W

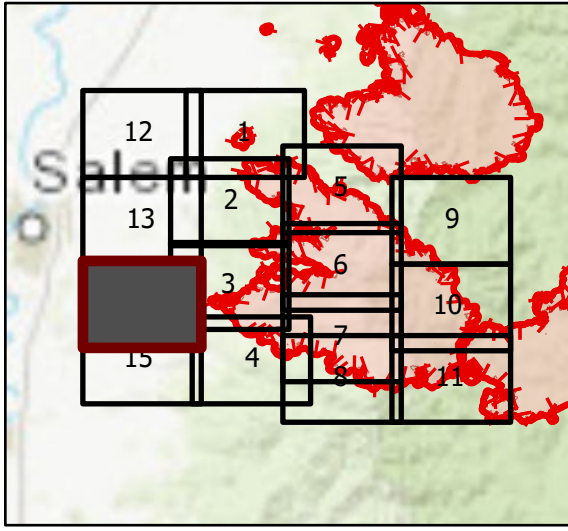
122°50'W

122°45'W

44°55'N

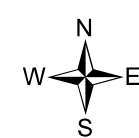
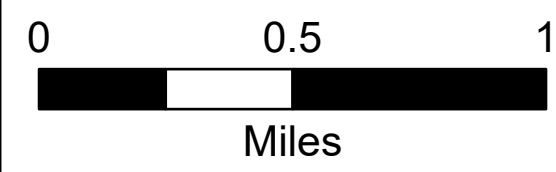
OPS Tile 14

Beachie Creek Fire
ORWIF-200299
09/15/2020 24hr
190,138 acres at
09/13/20 @ 2200

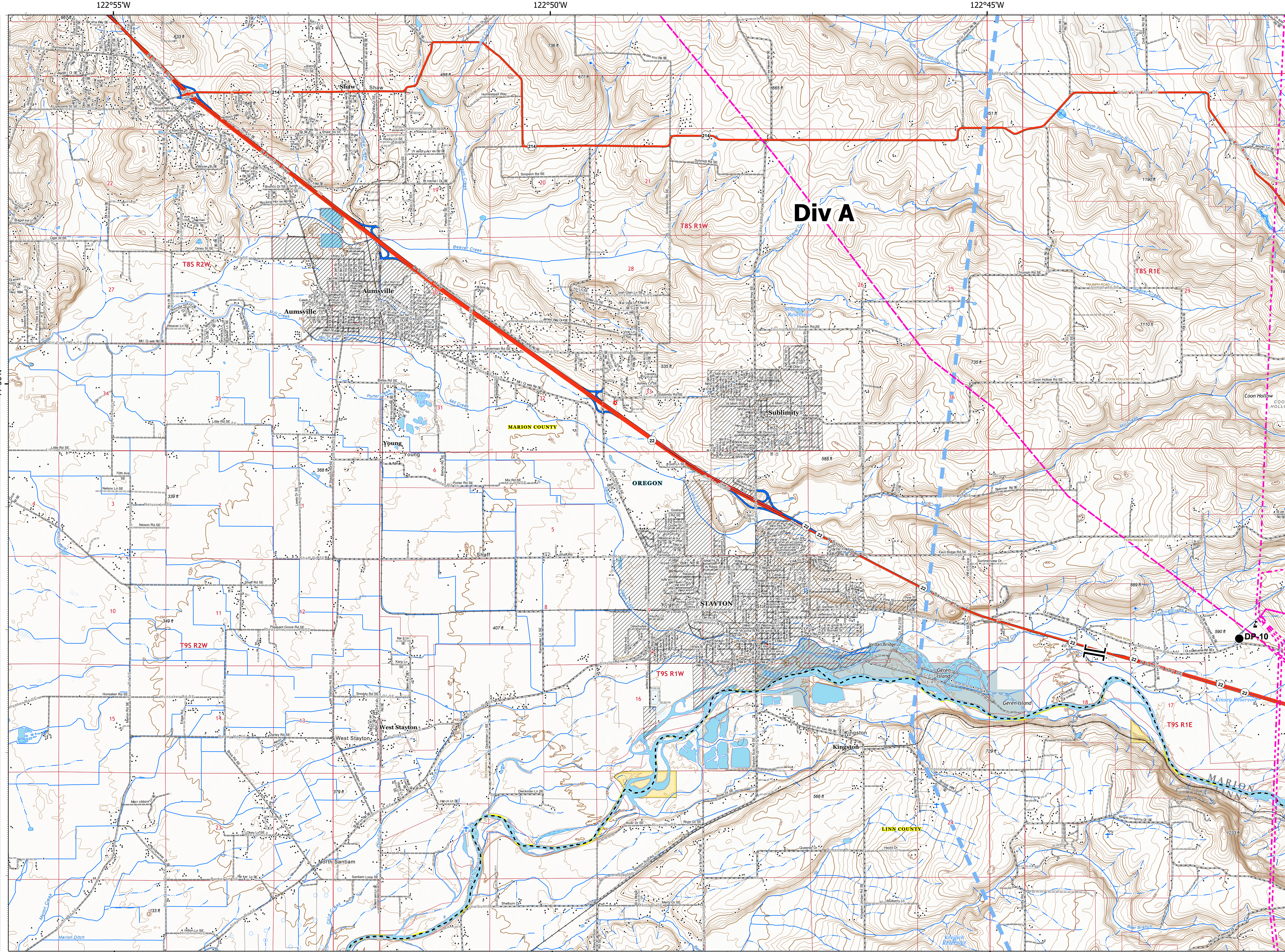


Page 14 of 15

- Temporary Flight Restriction
- Bureau of Land Management
- Local Government
- Private/Unknown
- State Highway
- Drop Point
- Value at Risk
- Branch Break
- Temporary Flight Restriction
- State Highway
- County Road
- Private Road
- County Boundary
- City Limits
- County Structures
- Place Name
- Hospital
- Fire Station
- Law Enforcement
- Airstrip
- Airport Runway
- Controlled access
- Highway or ramp
- Local connector
- Local or 4WD road
- Tunnel
- Ferry
- Controlled access
- Highway or ramp
- Local connector
- Local or 4WD road
- Controlled access
- Highway or ramp
- Local connector
- Local or 4WD road
- Alaska Pipeline
- Spring
- Well
- Perennial Stream
- Non-Perennial Stream
- Canal/Ditch
- Perennial Lake
- Swamp, Marsh
- Intermittent Lake
- Perennial Lake
- State or Territory
- County or Equivalent
- Bureau of Land Management
- Index
- Intermediate
- Depression Index
- Depression Intermediate
- Twin Ring
- Section
- Quad frame
- BPA Transmission Lines



9/14/2020 1955
Acres from IR
North American 1983 Datum, Lat/Long Grid



122°55'W

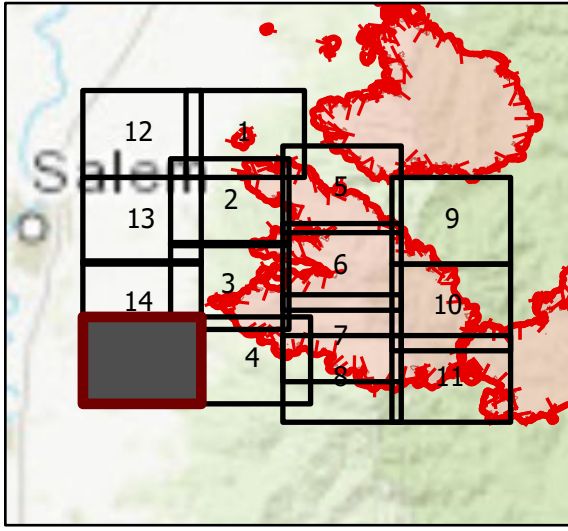
122°50'W

122°45'W

44°50'N

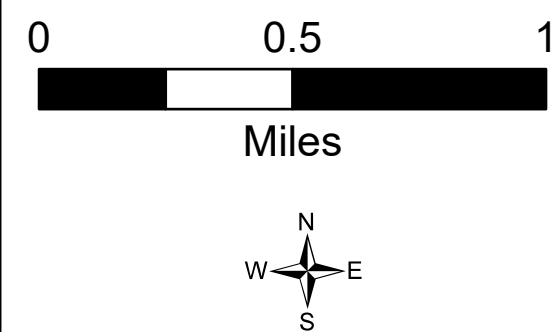
OPS Tile 15

Beachie Creek Fire
ORWIF-200299
09/15/2020 24hr
190,138 acres at
09/13/20 @ 2200

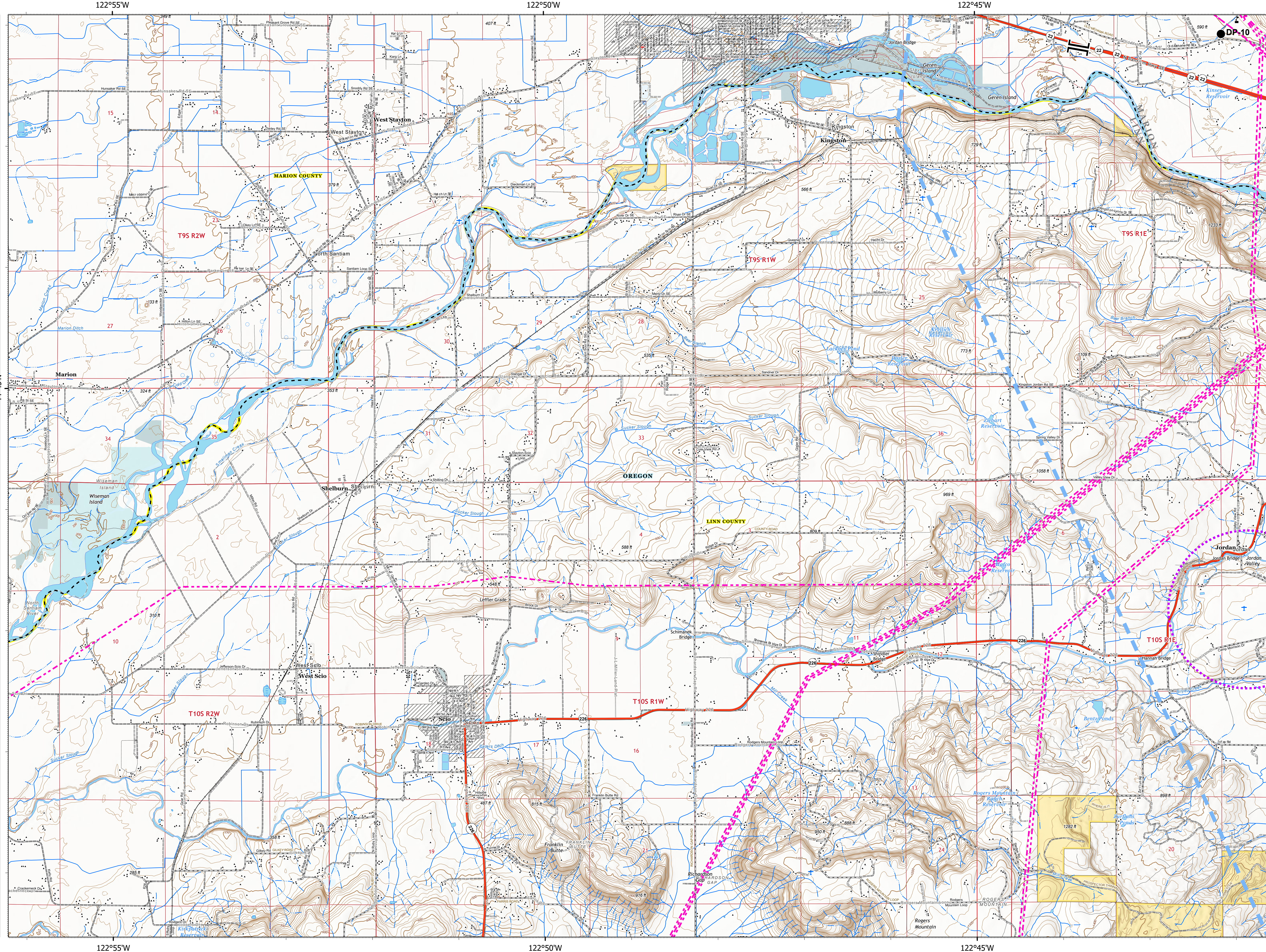


Page 15 of 15

- Temporary Flight Restriction
- UAS Launch and Recovery Zone
- Bureau of Land Management
- State
- Local Government
- Private/Unknown
- State Highway
- Drop Point
- Value at Risk
- Branch Break
- Temporary Flight Restriction
- UAS Launch and Recovery Zone
- State Highway
- County Road
- BLM Road
- Municipal Road
- Private Road
- County Boundary
- City Limits
- County Structures
- Place Name
- Index
- Fire Station
- Law Enforcement
- Airstrip
- Controlled Access
- Highway or ramp
- Local connector
- Local or 4WD road
- Tunnel
- Ferry
- Highway or ramp
- Local connector
- Local or 4WD road
- Highway or ramp
- Local connector
- Local or 4WD road
- Railroad
- Alaska Pipeline
- Gaging Station
- Spring
- Well
- Perennial Stream
- Non-Perennial Stream
- Canal/Ditch
- Nonearthen Reservoir
- Perennial Lake
- Intermittent Lake
- Perennial Lake
- State or Territory
- County or Equivalent
- Bureau of Land Management
- Intermediate
- Depression Index
- Depression Intermediate
- Twin Ring
- Section
- Quad frame
- BPA Transmission Lines



9/14/2020 1956
Acres from IR
North American 1983 Datum, Lat/Long Grid



122°55'W

122°50'W

122°45'W

44°45'N