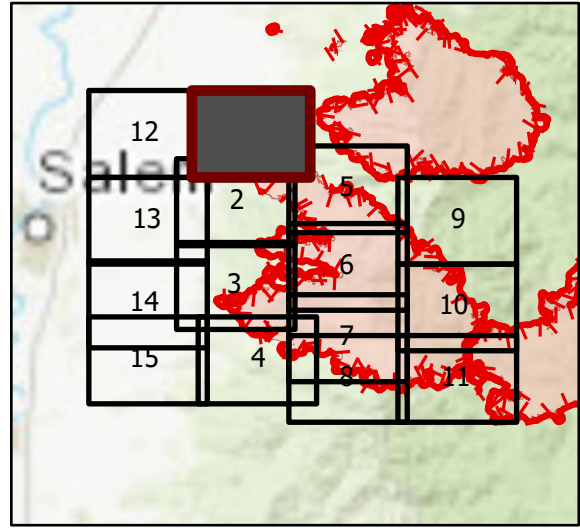


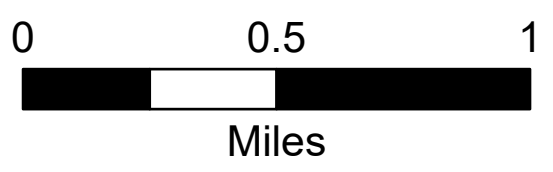
OPS Tile 1

Beachie Creek Fire
ORWIF-200299
09/16/2020 24hr
190,909 acres at
09/14/20 @ 2225

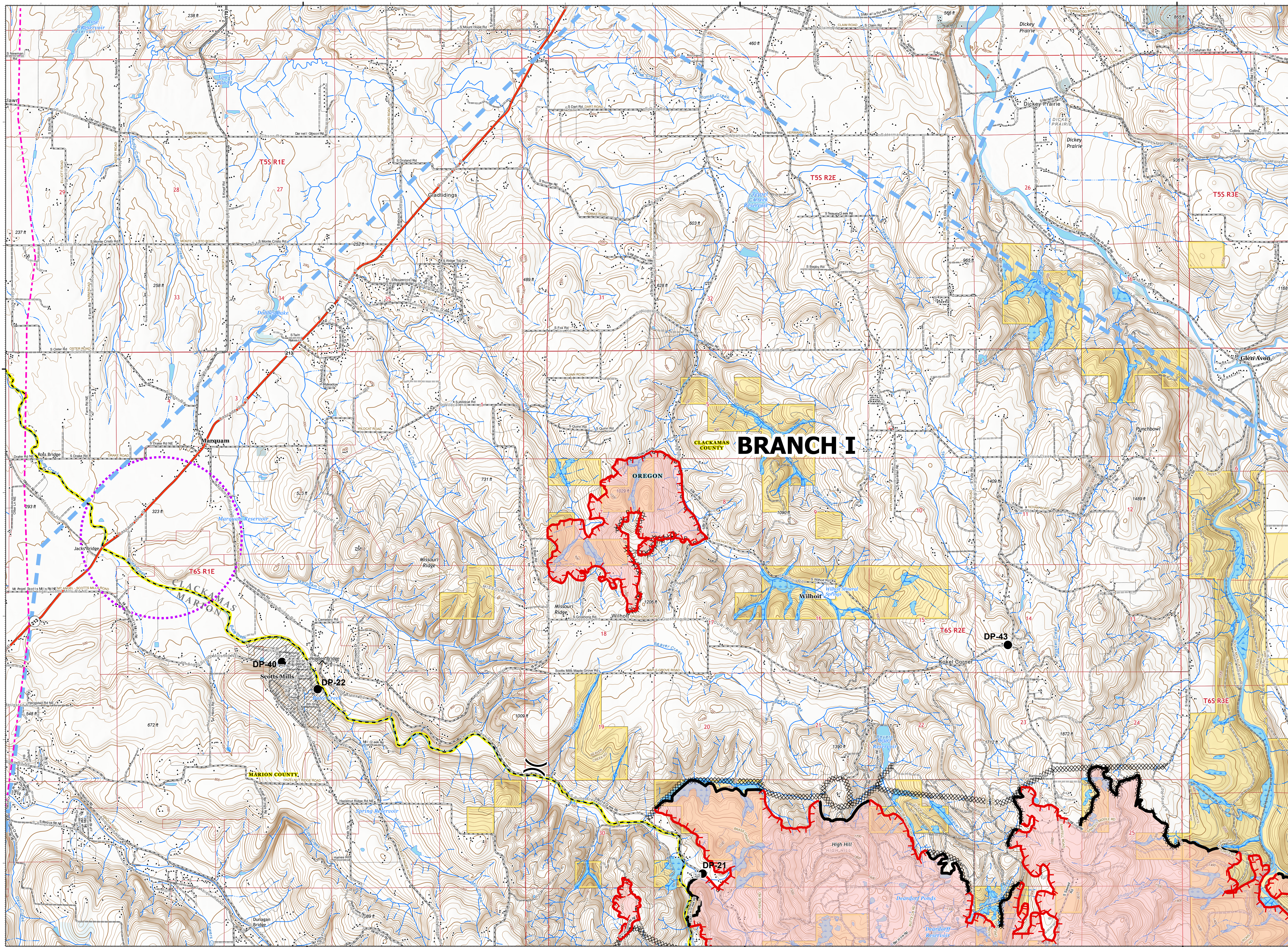


Page 1 of 15

- Contained Line
- ⊗ Completed Dozer Line
- ⊗ Completed Hand Line
- ⊗ Road as Completed Line
- ⊗ Temporary Flight Restriction
- ⊗ UAS Launch and Recovery Zone
- ⊗ Unclassified Fire Edge
- ⊗ Wildfire Daily Fire Perimeter
- ⊗ Wildfire Daily Fire Perimeter
- ⊗ State Highway
- ⊗ Bridge
- ⊗ Closure
- ⊗ Drop Point
- ⊗ Fire Station
- ⊗ Water Source
- ⊗ Division Break
- ⊗ Contained Line
- ⊗ Completed Dozer Line
- ⊗ Completed Hand Line
- ⊗ Road as Completed Line
- ⊗ Temporary Flight Restriction
- ⊗ UAS Launch and Recovery Zone
- ⊗ Unclassified Fire Edge
- ⊗ Wildfire Daily Fire Perimeter
- ⊗ Wildfire Daily Fire Perimeter
- ⊗ State Highway
- ⊗ County Road
- ⊗ BLM Road
- ⊗ Private Road
- ⊗ County Boundary
- ⊗ City Limits
- ⊗ County Structures
- ⊗ Place Name
- ⊗ Fire Station
- ⊗ Airport Runway
- ⊗ Controlled access
- ⊗ Highway or ramp
- ⊗ Local connector
- ⊗ Local or 4WD road
- ⊗ Local connector
- ⊗ Local or 4WD road
- ⊗ Local connector
- ⊗ Local or 4WD road
- ⊗ Local connector
- ⊗ Local or 4WD road
- ⊗ Alaska Pipeline
- ⊗ Spring
- ⊗ Perennial Stream
- ⊗ Non-Perennial Stream
- ⊗ Non-earth Dam
- ⊗ Non-earth Dam
- ⊗ Perennial Lake
- ⊗ Swamp, Marsh
- ⊗ Intermittent Lake
- ⊗ Perennial Lake
- ⊗ State or Territory
- ⊗ County or Equivalent
- ⊗ Bureau of Land Management
- ⊗ Index
- ⊗ Intermediate
- ⊗ Tim Ring
- ⊗ Section
- ⊗ Quad frame
- ⊗ EPA Transmission Lines



9/15/2020 2022
Acres from IR
North American 1983 Datum, Lat/Long Grid



122°40'W

122°35'W

122°30'W

45°5'N