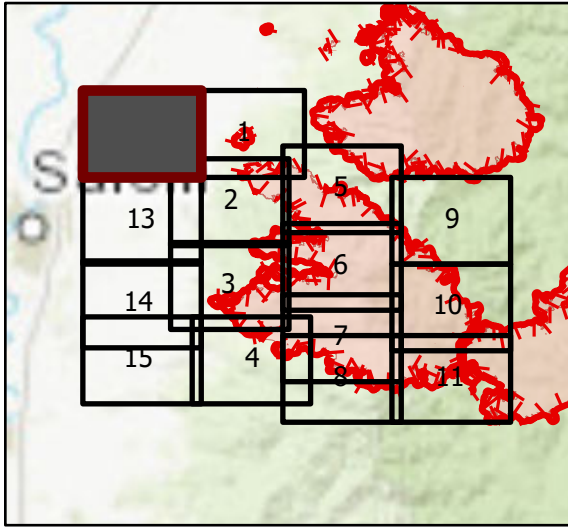


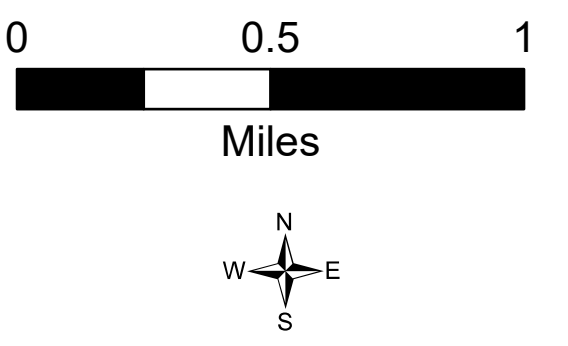
OPS Tile 12

Beachie Creek Fire
ORWIF-200299
09/16/2020 24hr
190,909 acres at
09/14/20 @ 2225

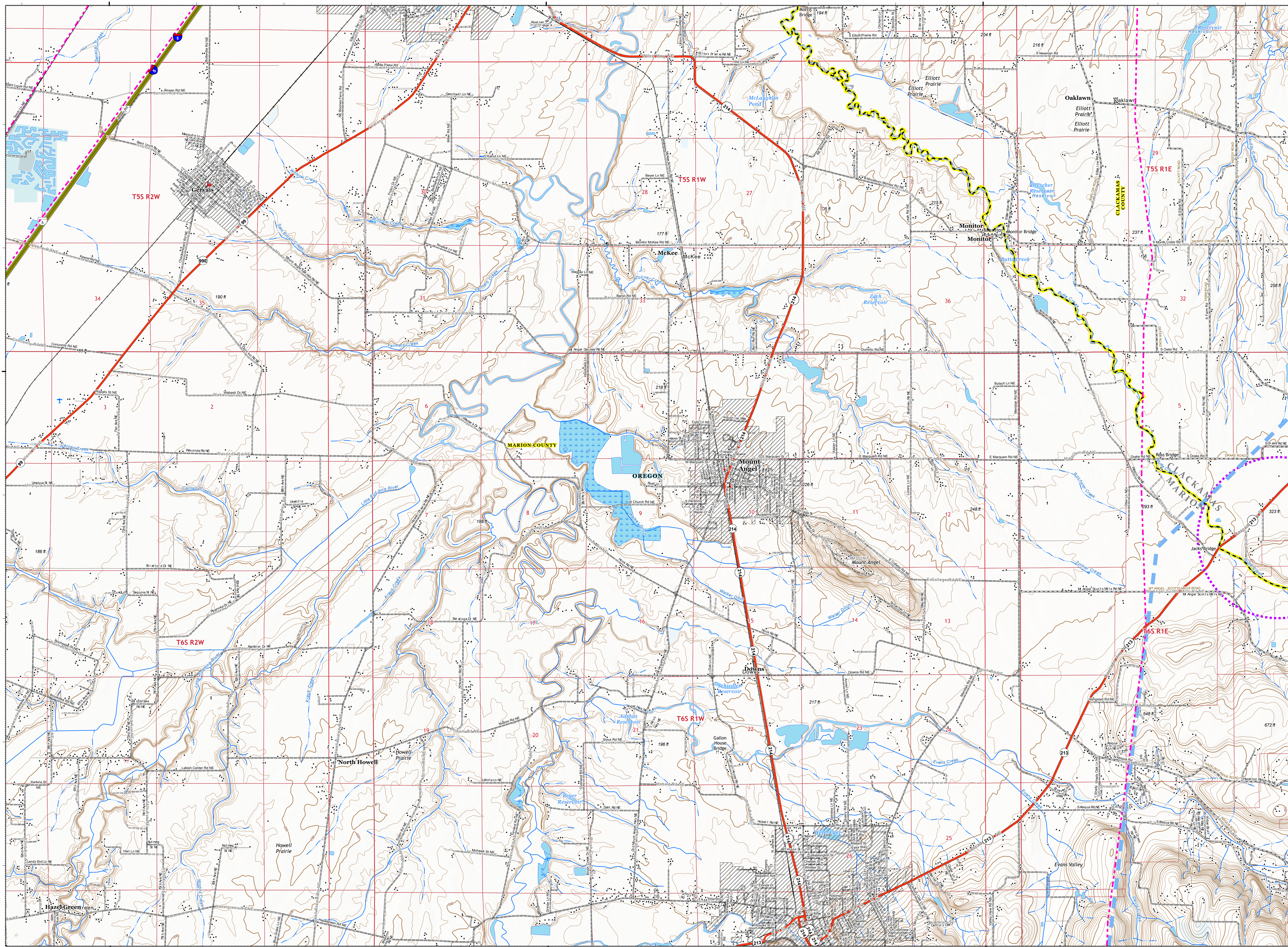


Page 12 of 15

- Temporary Flight Restriction
- UAS Launch and Recovery Zone
- State
- Local Government
- Private/Unknown
- Interstate Highway
- State Highway
- Temporary Flight Restriction
- UAS Launch and Recovery Zone
- Interstate Highway
- State Highway
- County Road
- Private Road
- County Boundary
- City Limits
- County Structures
- Place Name
- Fire Station
- Law Enforcement
- Airstrip
- Airport Runway
- Controlled access
- Highway or ramp
- Local connector
- Local or 4WD road
- Tunnel
- Ferry
- Controlled access
- Local connector
- Local or 4WD road
- Controlled access
- Local connector
- Local or 4WD road
- Railroad
- Alaska Pipeline
- Gaging Station
- Well
- Perennial Stream
- Non-Perennial Stream
- Canal/Ditch
- Nonearthen Reservoir
- Perennial Lake
- Swamp, Marsh
- Perennial Lake
- State or Territory
- County or Equivalent
- Index
- Intermediate
- Depression Intermediate
- Twin Ring
- Section
- Quad frame
- BPA Transmission Lines



9/15/2020 2032
Acres from IR
North American 1983 Datum, Lat/Long Grid



122°55'W

122°50'W

122°45'W

45°55'N