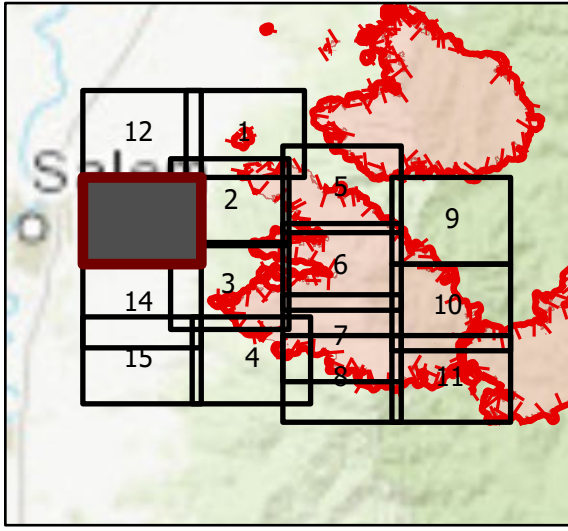


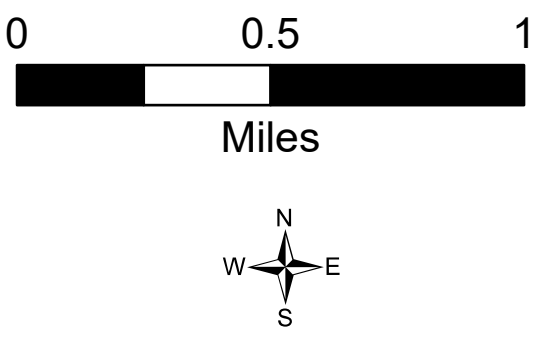
# OPS Tile 13

Beachie Creek Fire  
ORWIF-200299  
09/16/2020 24hr  
  
190,909 acres at  
09/14/20 @ 2225

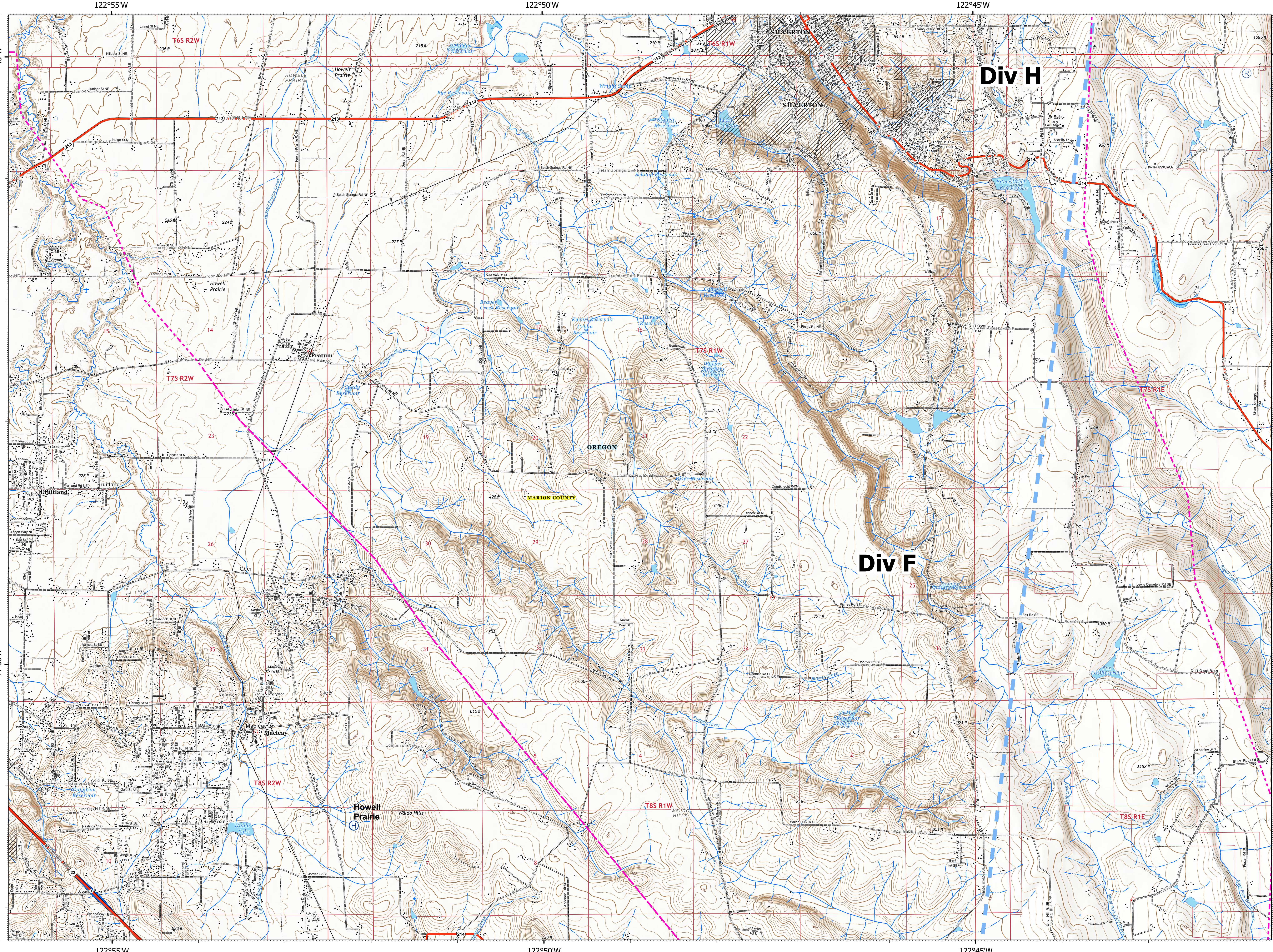


Page 13 of 15

- |                              |                         |
|------------------------------|-------------------------|
| Temporary Flight Restriction | Local or 4WD road       |
| Private/Unknown              | Controlled access       |
| State Highway                | Highway or ramp         |
| Local connector              | Local or 4WD road       |
| Local or 4WD road            | Railroad                |
| Alaska Pipeline              | Spring                  |
| State Highway                | Waterfall               |
| County Road                  | Well                    |
| Private Road                 | Perennial Stream        |
| County Boundary              | Non-Perennial Stream    |
| City Limits                  | Nonearthen Shore        |
| County Structures            | Nonearthen Reservoir    |
| Place Name                   | Perennial Lake          |
| Hospital                     | Swamp, Marsh            |
| Fire Station                 | Intermittent Lake       |
| Law Enforcement              | Perennial Lake          |
| Airstrip                     | Dam                     |
| Airport Runway               | State or Territory      |
| Controlled access            | County or Equivalent    |
| Highway or ramp              | Index                   |
| Local connector              | Intermediate            |
| Local or 4WD road            | Depression Index        |
| Tunnel                       | Depression Intermediate |
| Ferry                        | Twin Ring               |
| Controlled access            | Section                 |
| Highway or ramp              | Quad frame              |
| Local connector              | BPA Transmission Lines  |



9/15/2020 2032  
Acres from IR  
North American 1983 Datum, Lat/Long Grid



122°55'W

122°50'W

122°45'W

44°55'N