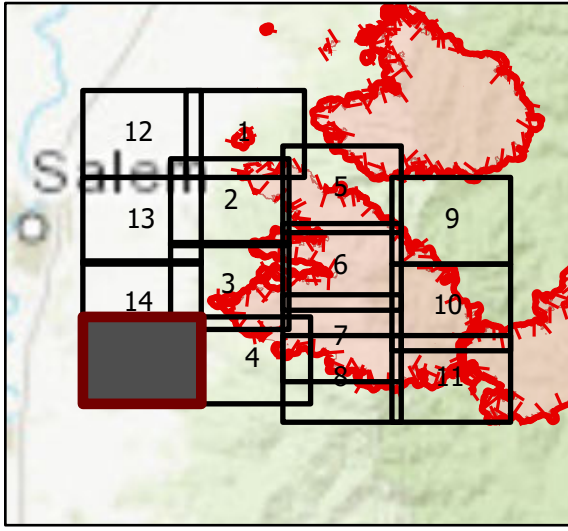


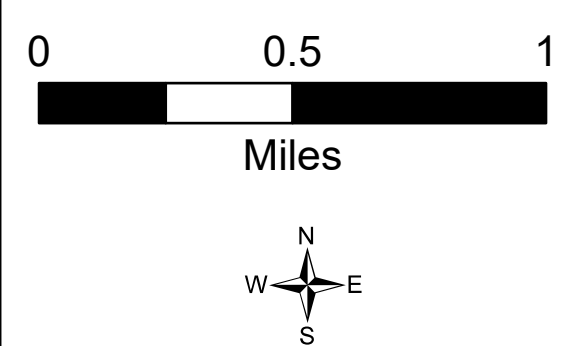
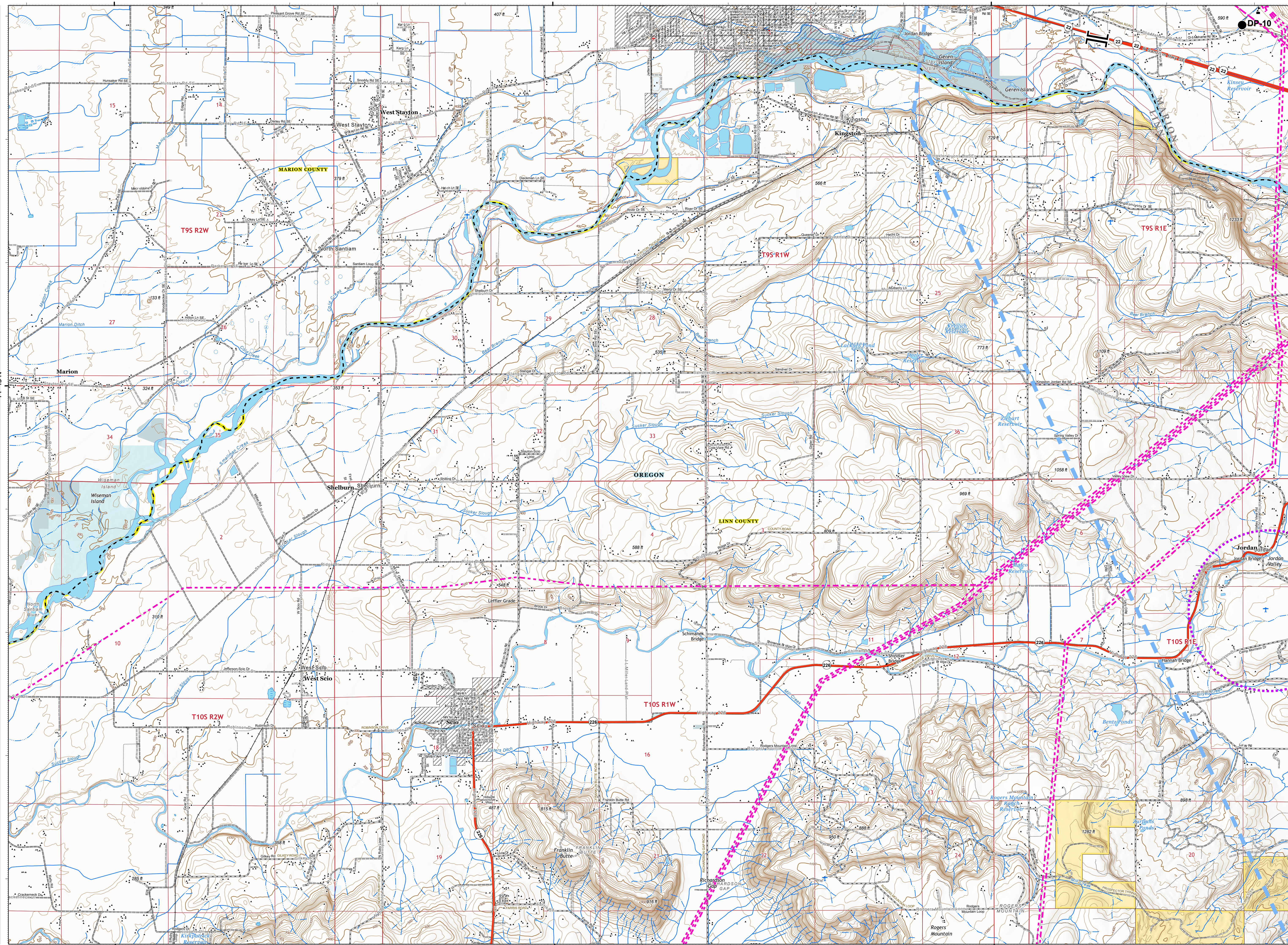
# OPS Tile 15

Beachie Creek Fire  
ORWIF-200299  
09/16/2020 24hr  
190,909 acres at  
09/14/20 @ 2225



Page 15 of 15

- Temporary Flight Restriction
- UAS Launch and Recovery Zone
- Bureau of Land Management
- State
- Local Government
- Private/Unknown
- State Highway
- Drop Point
- Value at Risk
- Branch Break
- Temporary Flight Restriction
- UAS Launch and Recovery Zone
- State Highway
- County Road
- BLM Road
- Municipal Road
- Private Road
- County Boundary
- City Limits
- County Structures
- Place Name
- Index
- Fire Station
- Law Enforcement
- Airstrip
- Controlled Access
- Highway or Ramp
- Local Connector
- Local or 4WD Road
- Tunnel
- Ferry
- Highway or Ramp
- Local Connector
- Local or 4WD Road
- Highway or Ramp
- Local Connector
- Local or 4WD Road
- Railroad
- Alaska Pipeline
- Gaging Station
- Spring
- Well
- Perennial Stream
- Non-Perennial Stream
- Canal/Ditch
- Nonearthen Reservoir
- Perennial Lake
- Intermittent Lake
- Perennial Lake
- State or Territory
- County or Equivalent
- Bureau of Land Management
- Intermediate
- Depression Index
- Depression Intermediate
- Twin Ring
- Section
- Quad Frame
- BPA Transmission Lines



9/15/2020 2034  
Acres from IR  
North American 1983 Datum, Lat/Long Grid

122°55'W

122°50'W

122°45'W

44°45'N