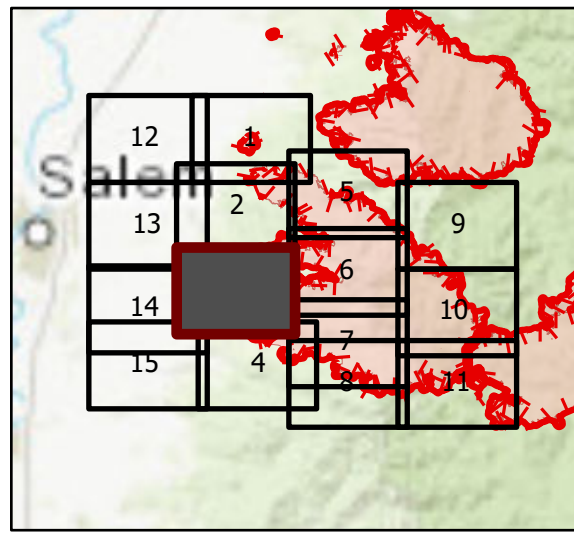


# OPS Tile 3

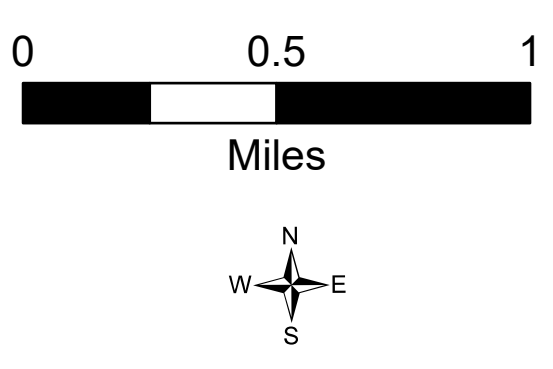
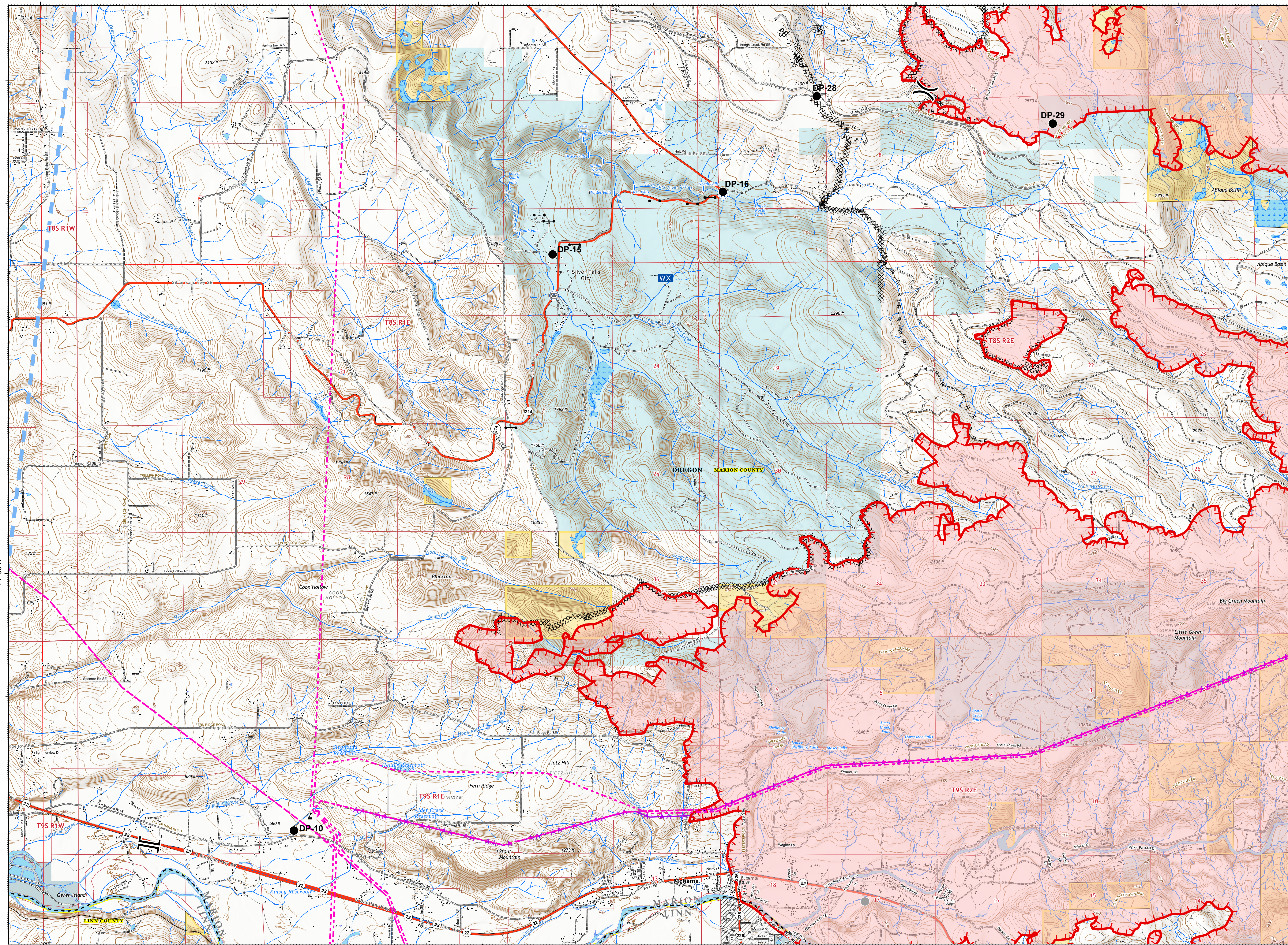
Beachie Creek Fire  
ORWIF-200299  
09/16/2020 24hr

190,909 acres at  
09/14/20 @ 2225



Page 3 of 15

- XX Completed Dozer Line
- H Completed Hand Line
- R Road as Completed Line
- A Access or Improved Road
- Aerial Hazard
- Temporary Flight Restriction
- Uncontrolled Fire Edge
- Wildfire Daily Fire Perimeter
- Bureau of Land Management
- State
- Local Government
- Private/Unknown
- State Highway
- Bridge
- Drop Point
- F Fire Station
- Gate
- WX Mobile Weather Unit
- W Water Source
- Value at Risk
- Other
- Division Break
- Branch Break
- XX Completed Dozer Line
- H Completed Hand Line
- R Road as Completed Line
- A Access or Improved Road
- Aerial Hazard
- Temporary Flight Restriction
- Uncontrolled Fire Edge
- Wildfire Daily Fire Perimeter
- State Highway
- County Road
- BLM Road
- Municipal Road
- Private Road
- Other Road
- County Boundary
- City Limits
- County Structures
- Place Name
- Fire Station
- Airport Runway
- Controlled access
- Highway or ramp
- Local connector
- Local or 4WD road
- Tunnel
- Ferry
- Highway or ramp
- Local connector
- Local or 4WD road
- Local connector
- Local or 4WD road
- Railroad
- Alaska Pipeline
- Gaging Station
- Spring
- Waterfall
- Well
- Perennial Stream
- Non-Perennial Stream
- Perennial Lake
- Swamp, Marsh
- Intermittent Lake
- Perennial Lake
- Rapids
- State or Territory
- County or Equivalent
- Bureau of Land Management
- Index
- Intermediate
- Depression Index
- Depression Intermediate
- Twin Ring
- Section
- Quad frame
- BPA Transmission Lines



9/15/2020 2024  
Acres from IR  
North American 1983 Datum, Lat/Long Grid