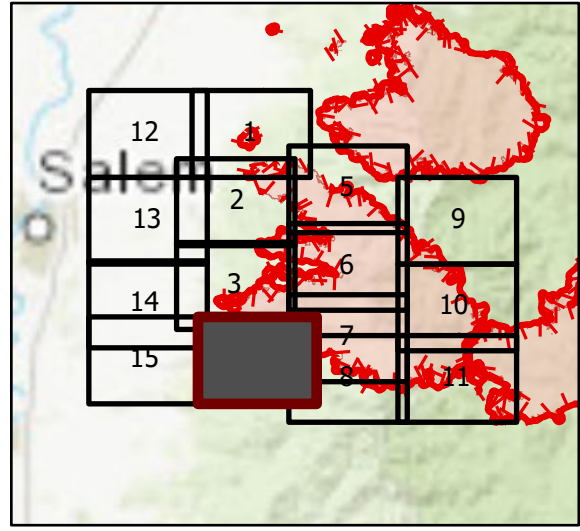


OPS Tile 4

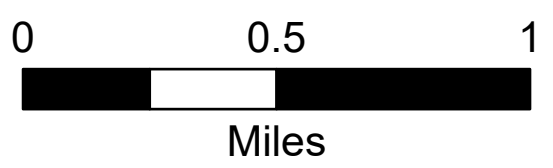
Beachie Creek Fire
ORWIF-200299
09/16/2020 24hr

190,909 acres at
09/14/20 @ 2225

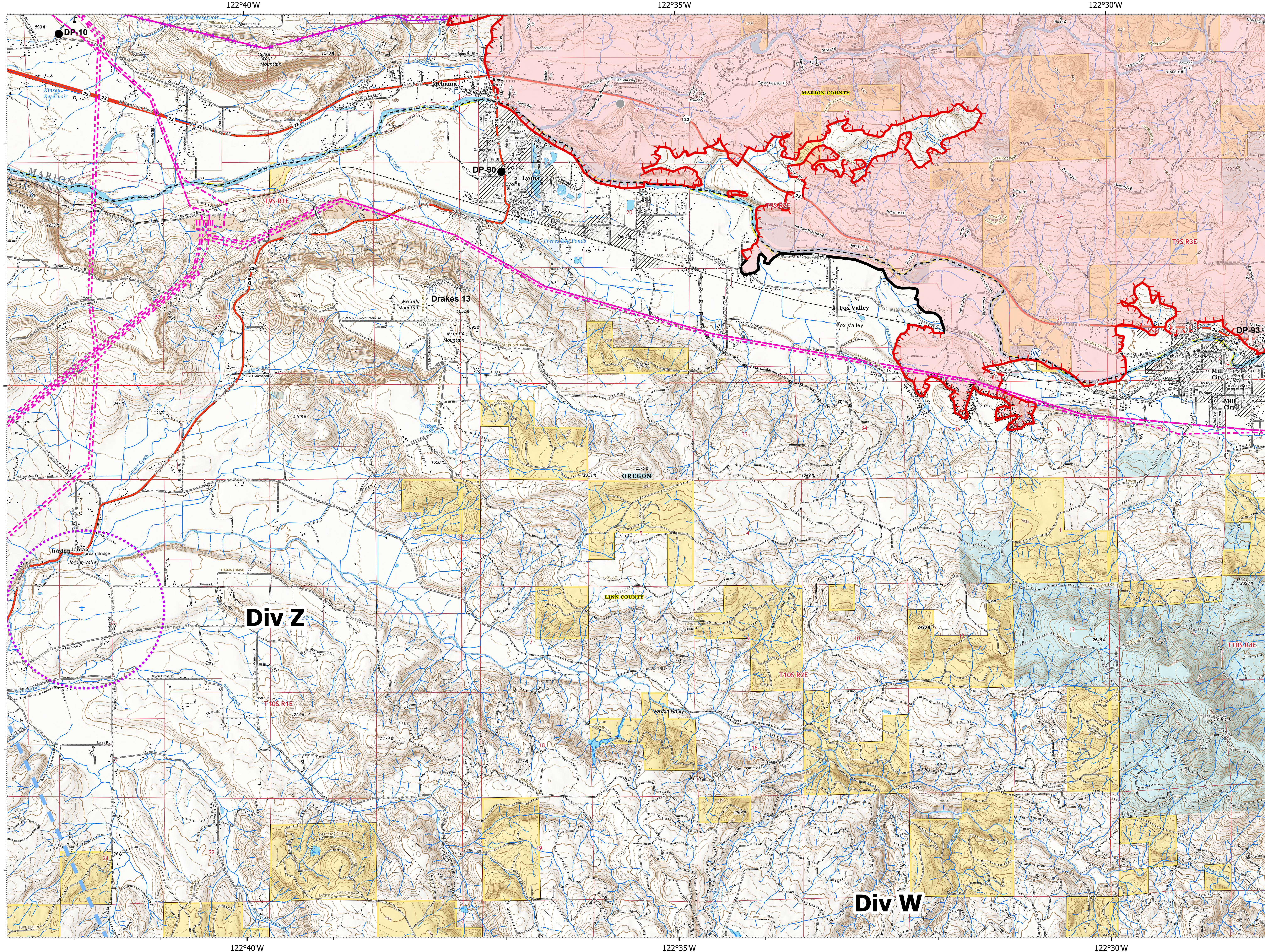


Page 4 of 15

- | | |
|---------------------------------|-----------------------------|
| — Contained Line | Place Name |
| ⊗ Completed Dotted Line | Fire Station |
| ⊗ Completed Hand Line | Law Enforcement |
| ⊗ Road as Completed Line | Airstrip |
| — Aerial Hazard | ⊗ Airport Runway |
| — Temporary Flight Restriction | — Controlled Access |
| — UAS Launch and Recovery Zone | — Highway or ramp |
| — Uncontrolled Fire Edge | — Local connector |
| — Wildlife Daily Fire Perimeter | — Local or 4WD road |
| — Bureau of Land Management | — Tunnel |
| — Other Federal | — Ferry |
| — Local Government | — Highway or ramp |
| — Private/Unknown | — Local connector |
| — State Highway | — Local or 4WD road |
| ● Drop Point | — Highway or ramp |
| ⊗ Fire Station | — Local connector |
| ⊗ Repeater | — Local or 4WD road |
| ⊗ Water Source | — Railroad |
| ⊗ Value at Risk | — Alaska Pipeline |
| ⊗ Other | — Gaging Station |
| — Contained Line | — Waterfall |
| ⊗ Completed Dotted Line | — Perennial Stream |
| ⊗ Completed Hand Line | — Non-Perennial Stream |
| ⊗ Road as Completed Line | — Canal/Ditch |
| — Aerial Hazard | — Perennial Lake |
| — Temporary Flight Restriction | — Swamp, Marsh |
| — UAS Launch and Recovery Zone | — Perennial Lake |
| — Uncontrolled Fire Edge | — Perennial Lake |
| — Wildlife Daily Fire Perimeter | — Rapids |
| — State Highway | — State or Territory |
| — County Road | — County or Equivalent |
| — BLM Road | — Bureau of Land Management |
| — Municipal Road | — Index |
| — Private Road | — Intermediate |
| — Other Road | — Depression Index |
| — County Boundary | — Depression Intermediate |
| — City Limits | — Twin Ring |
| — County Structures | — Section |
| | — Quad frame |
| | — BPA Transmission Lines |



9/15/2020 2024
Acres from IR
North American 1983 Datum, Lat/Long Grid



Div Z

Div W