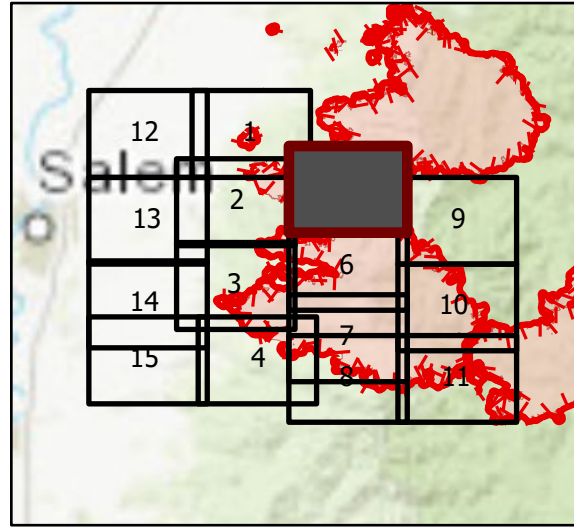


# OPS Tile 5

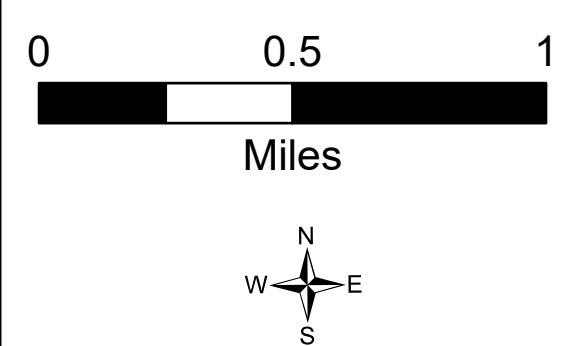
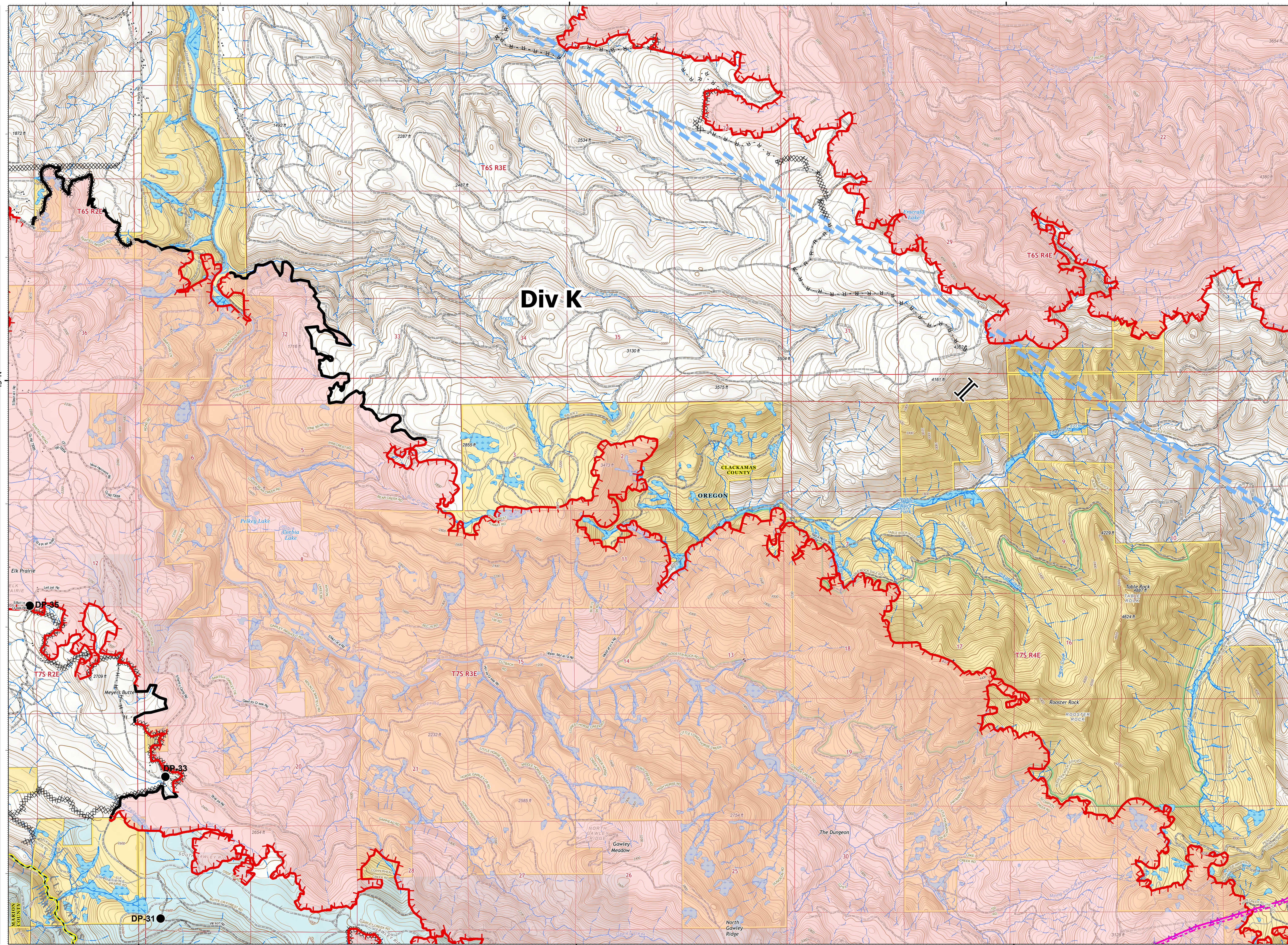
Beachie Creek Fire  
ORWIF-200299  
09/16/2020 24hr

190,909 acres at  
09/14/20 @ 2225



Page 5 of 15

- |  |   |  |   |
|--|---|--|---|
|  | Contained Line                                  |  | Place Name                                      |
|  | Completed Dozer Line                            |  | Airport Runway                                  |
|  | Completed Hand Line                             |  | Controlled access                               |
|  | Road as Completed Line                          |  | Highway or ramp                                 |
|  | Aerial Hazard                                   |  | Local connector                                 |
|  | Temporary Flight Restriction                    |  | Local or 4WD road                               |
|  | Uncontrolled Fire Edge                          |  | Tunnel  |
|  | Wildfire Daily Fire Perimeter                   |  | Ferry   |
|  | Bureau of Land Management State Private/Unknown |  | Local or 4WD road                               |
|  | Drop Point                                      |  | Alaska Pipeline                                 |
|  | Branch Break                                    |  | Gaging Station                                  |
|  | Contained Line                                  |  | Perennial Stream                                |
|  | Completed Dozer Line                            |  | Non-Perennial Stream                            |
|  | Completed Hand Line                             |  | Perennial Lake                                  |
|  | Road as Completed Line                          |  | Swamp, Marsh                                    |
|  | Aerial Hazard                                   |  | Intermittent Lake                               |
|  | Temporary Flight Restriction                    |  | Perennial Lake                                  |
|  | Uncontrolled Fire Edge                          |  | State or Territory                              |
|  | Wildfire Daily Fire Perimeter                   |  | County or Equivalent                            |
|  | Bureau of Land Management State Private/Unknown |  | Wilderness                                      |
|  | Drop Point                                      |  | Bureau of Land Management State Private/Unknown |
|  | Branch Break                                    |  | Index   |
|  | Contained Line                                  |  | Intermediate                                    |
|  | Completed Dozer Line                            |  | Depression Intermediate                         |
|  | Completed Hand Line                             |  | Twin Ring                                       |
|  | Road as Completed Line                          |  | Section   |
|  | Aerial Hazard                                   |  | Quad frame                                      |
|  | Temporary Flight Restriction                    |  | BPA Transmission Lines                          |
|  | Uncontrolled Fire Edge                          |  |   |
|  | Wildfire Daily Fire Perimeter                   |  |   |
|  | Bureau of Land Management State Private/Unknown |  |   |
|  | Drop Point                                      |  |   |
|  | Branch Break                                    |  |   |
|  | Contained Line                                  |  |   |
|  | Completed Dozer Line                            |  |   |
|  | Completed Hand Line                             |  |   |
|  | Road as Completed Line                          |  |   |
|  | Aerial Hazard                                   |  |   |
|  | Temporary Flight Restriction                    |  |   |
|  | Uncontrolled Fire Edge                          |  |   |
|  | Wildfire Daily Fire Perimeter                   |  |   |
|  | Bureau of Land Management State Private/Unknown |  |   |
|  | Drop Point                                      |  |   |
|  | Branch Break                                    |  |   |



9/15/2020 2025  
Acres from IR  
North American 1983 Datum, Lat/Long Grid