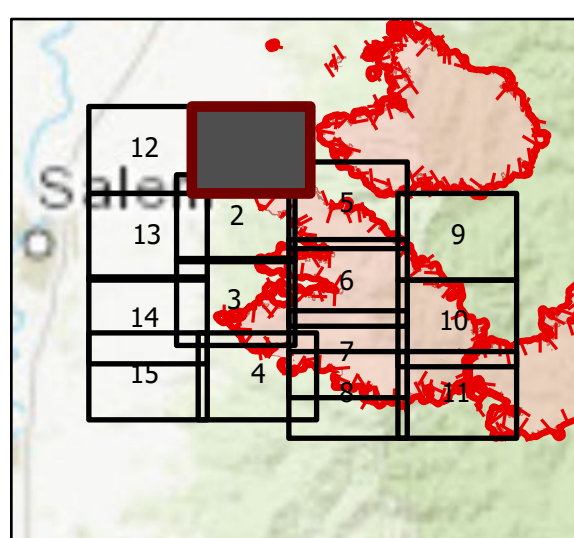


OPS Tile 1

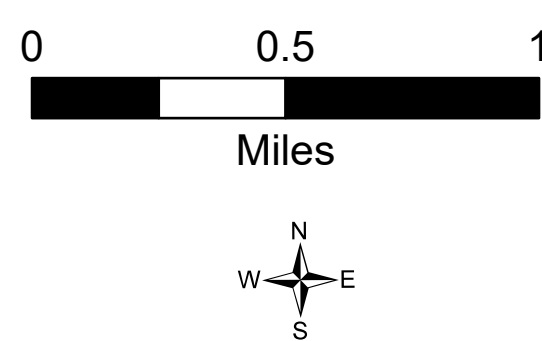
Beachie Creek Fire
ORWIF-200299
09/16/2020 24hr

190,909 acres at
09/14/20 @ 2225

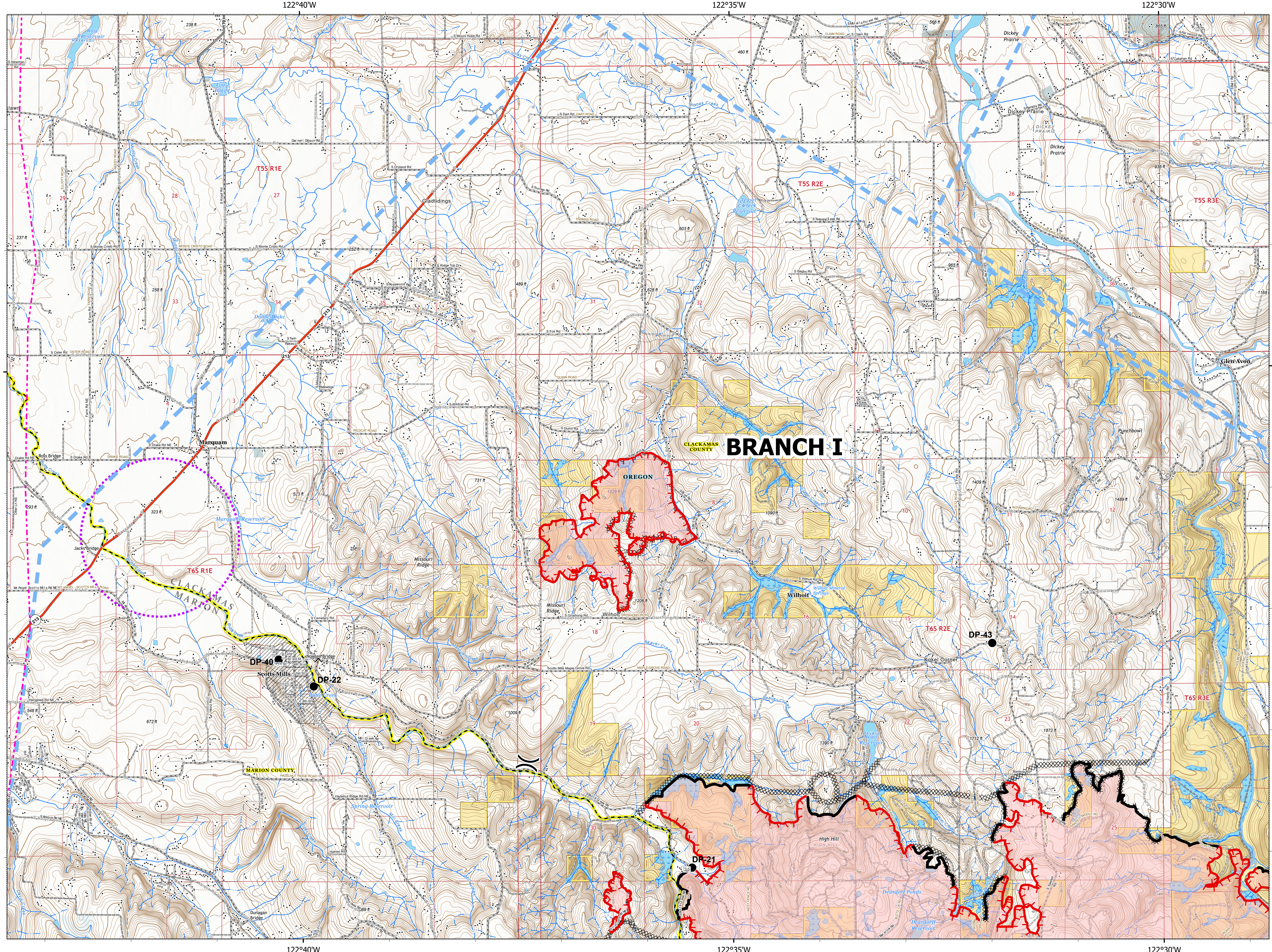


Page 1 of 15

- Contained Line
- ⊗ Completed Dozer Line
- ⊗ Completed Hand Line
- ⊗ Road as Completed Line
- ⊗ Temporary Flight Restriction
- ⊗ UAS Launch and Recovery Zone
- ⊗ Wildfire Daily Fire Perimeter
- ⊗ Wildfire Daily Fire Perimeter
- ⊗ State Highway
- ⊗ Bridge
- ⊗ Closure
- ⊗ Drop Point
- ⊗ Fire Station
- ⊗ Water Source
- ⊗ Division Break
- ⊗ Contained Line
- ⊗ Completed Dozer Line
- ⊗ Completed Hand Line
- ⊗ Road as Completed Line
- ⊗ Temporary Flight Restriction
- ⊗ UAS Launch and Recovery Zone
- ⊗ Wildfire Daily Fire Perimeter
- ⊗ Wildfire Daily Fire Perimeter
- ⊗ State Highway
- ⊗ County Road
- ⊗ BLM Road
- ⊗ Private Road
- ⊗ County Boundary
- ⊗ City Limits
- ⊗ County Structures
- ⊗ Place Name
- ⊗ Fire Station
- ⊗ Airport Runway
- ⊗ Controlled access
- ⊗ Highway or ramp
- ⊗ Local connector
- ⊗ Local or 4WD road
- ⊗ Turned
- ⊗ Ferry
- ⊗ Local connector
- ⊗ Local or 4WD road
- ⊗ Local connector
- ⊗ Local or 4WD road
- ⊗ Alaska Pipeline
- ⊗ Spring
- ⊗ Perennial Stream
- ⊗ Non-Perennial Stream
- ⊗ Non-earth Dam
- ⊗ Non-earth Dam
- ⊗ Swamp, Marsh
- ⊗ Intermittent Lake
- ⊗ Perennial Lake
- ⊗ State or Territory
- ⊗ County or Equivalent
- ⊗ Bureau of Land Management
- ⊗ Index
- ⊗ Intermediate
- ⊗ Turn Ring
- ⊗ Section
- ⊗ Quad frame
- ⊗ EPA Transmission Lines



9/15/2020 2002
Acres from IR
North American 1983 Datum, Lat/Long Grid



BRANCH I

CLACKAMAS COUNTY

OREGON

WILHOIT

MARION COUNTY

SCOTT'S MILLS

WARMON

T55 R1E

T55 R2E

T55 R3E

T65 R1E

T65 R2E

T65 R3E

DP-40

DP-22

DP-21

DP-43

238 ft

27

258 ft

33

323 ft

672 ft

731 ft

1000 ft

1000 ft

1000 ft

460 ft

603 ft

626 ft

709 ft

1029 ft

1029 ft

1029 ft

1029 ft

566 ft

965 ft

965 ft

1409 ft

1409 ft

1409 ft

1712 ft

1712 ft

965 ft

965 ft

965 ft

1409 ft

1409 ft

1409 ft

1712 ft

1712 ft

122°40'W

122°35'W

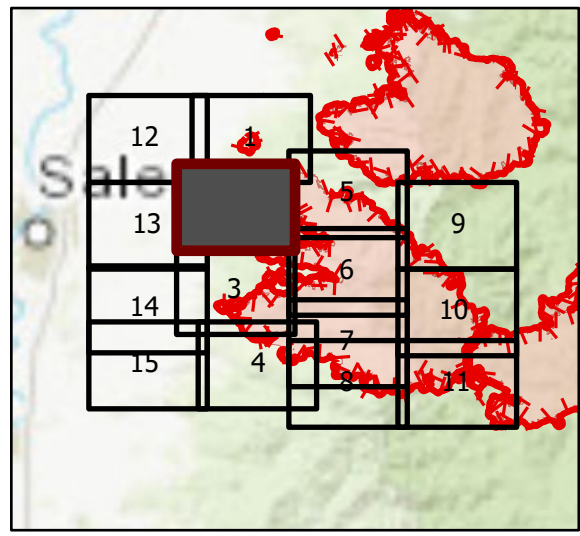
122°30'W

45°55'N

OPS Tile 2

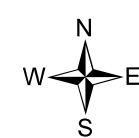
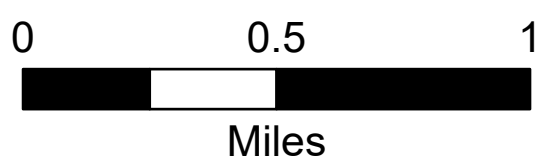
Beachie Creek Fire
ORWIF-200299
09/16/2020 24hr

190,909 acres at
09/14/20 @ 2225

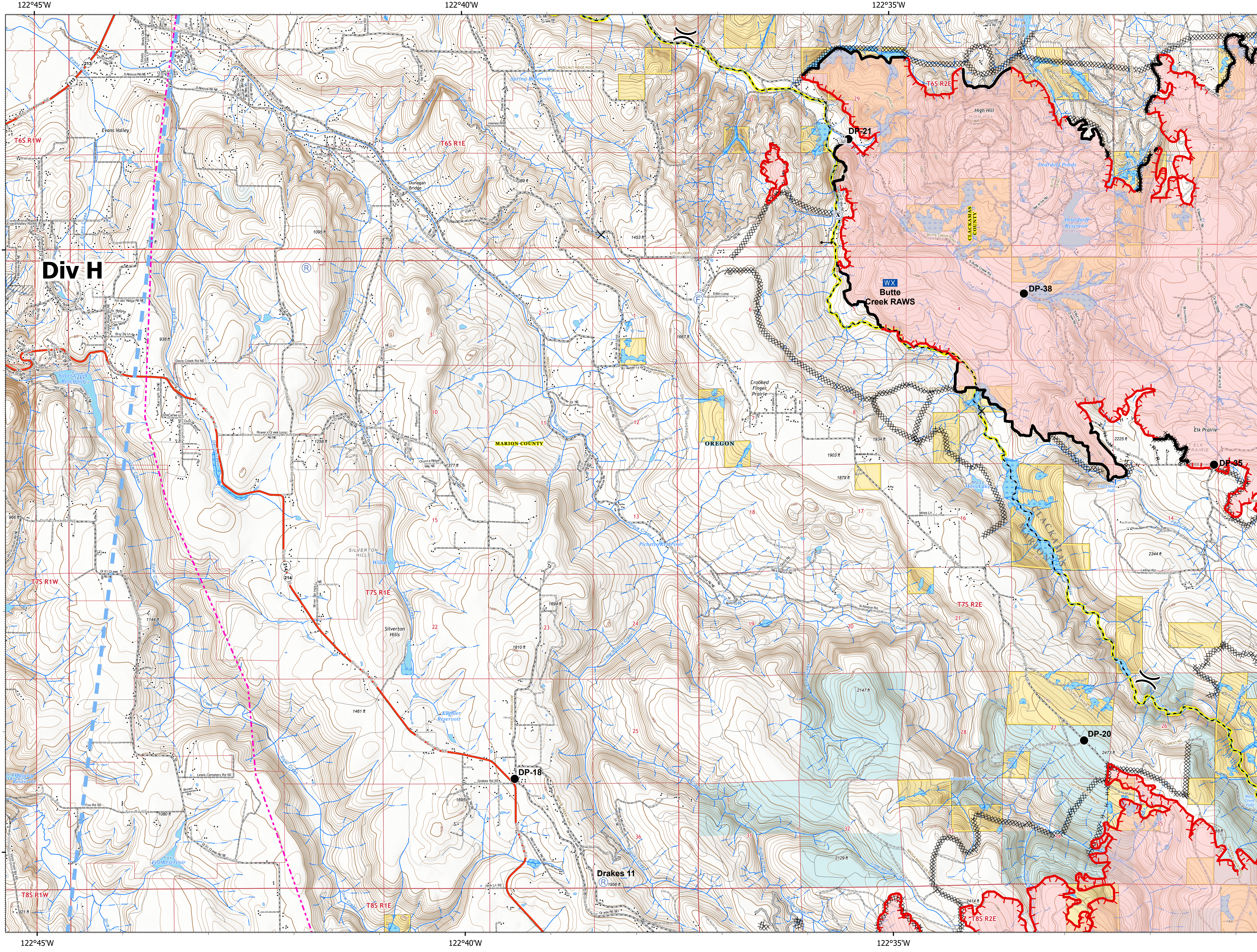


Page 2 of 15

- Contained Line
- Completed Dozer Line
- Completed Hand Line
- Road as Completed Line
- Access or Improved Road
- Temporary Flight Restriction
- Uncontrolled Fire Edge
- Wildfire Daily Fire Perimeter
- Bureau of Land Management
- State
- Private/Unknown
- State Highway
- Bridge
- Closure
- Drop Point
- Fire Station
- Gate
- Mobile Weather Unit
- Repeater
- Water Source
- Division Break
- Completed Line
- Completed Dozer Line
- Completed Hand Line
- Road as Completed Line
- Access or Improved Road
- Temporary Flight Restriction
- Uncontrolled Fire Edge
- Wildfire Daily Fire Perimeter
- State Highway
- County Road
- BUM Road
- Private Road
- Other Road
- County Boundary
- City Limits
- County Structures
- Place Name
- Fire Station
- Airport Runway
- Controlled access
- Highway or ramp
- Local connector
- Local or 4WD road
- Local or 4WD road
- Tunnel
- Ferry
- Local connector
- Local or 4WD road
- Local connector
- Local or 4WD road
- Alaska Pipeline
- Waterfall
- Perennial Stream
- Non-Perennial Stream
- Nonearthen Shore
- Perennial Lake
- Swamp, Marsh
- Dam
- State or Territory
- County or Equivalent
- Bureau of Land Management
- Index
- Intermediate
- Depression Intermediate
- Twin Ring
- Section
- Quad frame
- BPA Transmission Lines

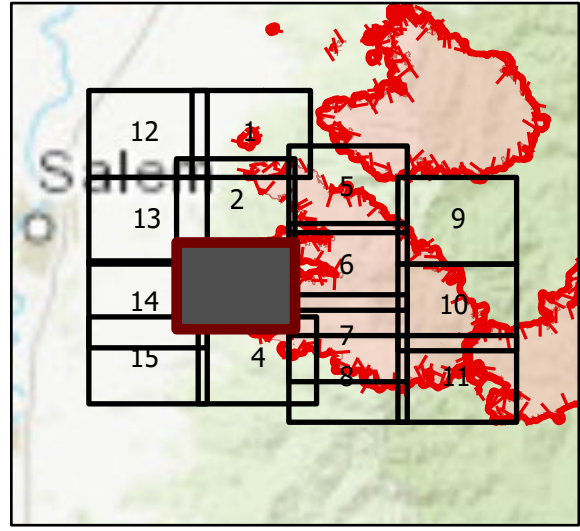


9/15/2020 2002
Acres from IR
North American 1983 Datum, Lat/Long Grid



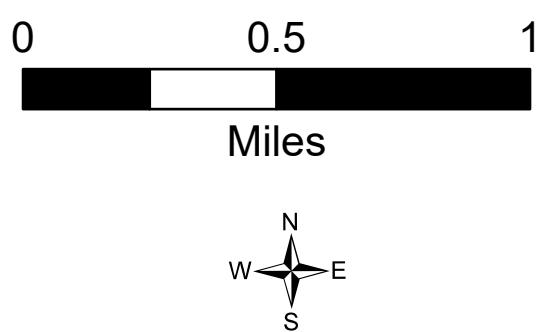
OPS Tile 3

Beachie Creek Fire
ORWIF-200299
09/16/2020 24hr
190,909 acres at
09/14/20 @ 2225

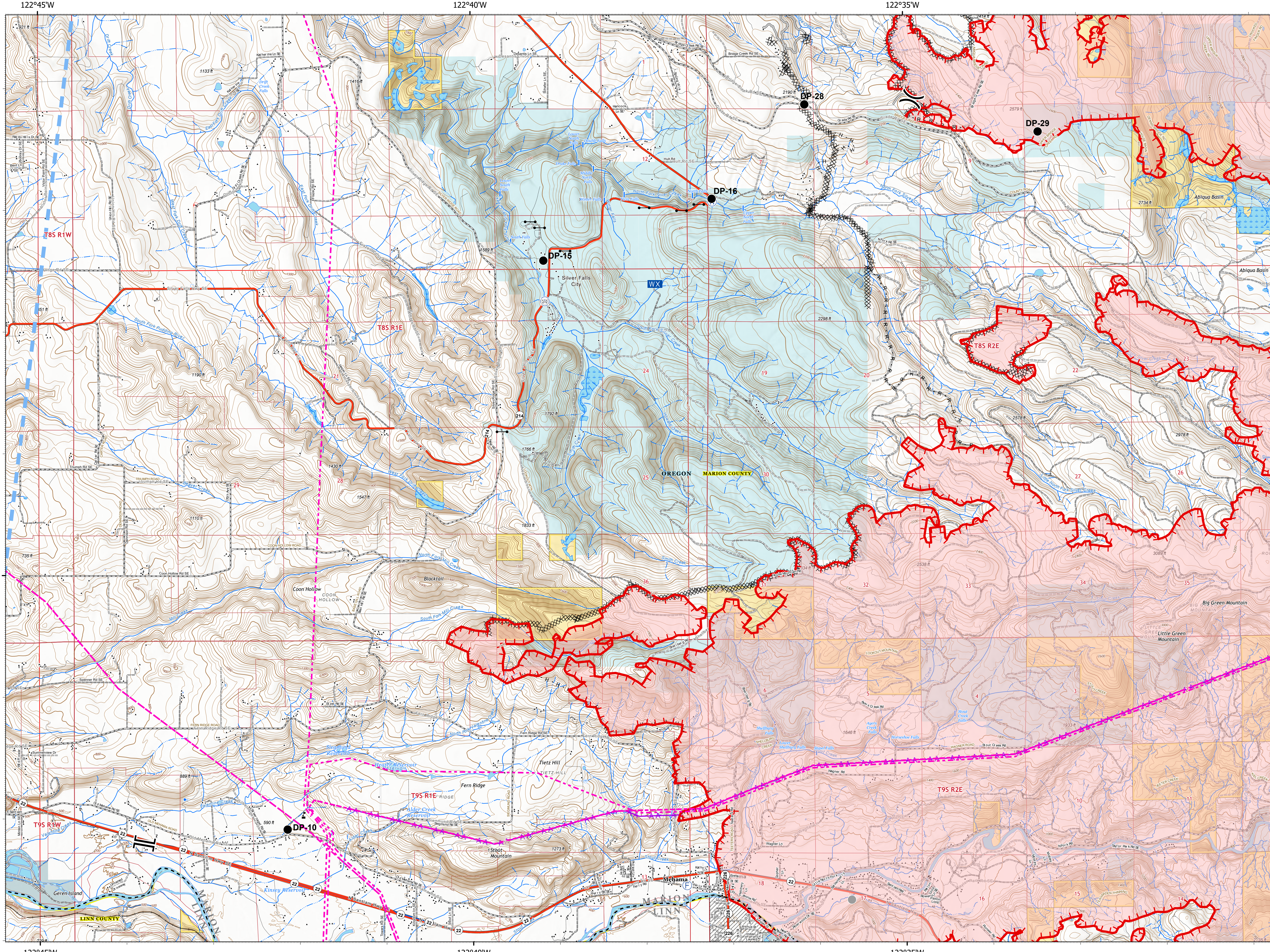


Page 3 of 15

- XX Completed Dozer Line
- H Completed Hand Line
- R Road as Completed Line
- A Access or Improved Road
- Aerial Hazard
- Temporary Flight Restriction
- Uncontrolled Fire Edge
- Wildfire Daily Fire Perimeter
- Bureau of Land Management
- State
- Local Government
- Private/Unknown
- State Highway
- Bridge
- Drop Point
- F Fire Station
- Gate
- WX Mobile Weather Unit
- W Water Source
- Value at Risk
- Other
- Division Break
- Branch Break
- XX Completed Dozer Line
- H Completed Hand Line
- R Road as Completed Line
- A Access or Improved Road
- Aerial Hazard
- Temporary Flight Restriction
- Uncontrolled Fire Edge
- Wildfire Daily Fire Perimeter
- State Highway
- County Road
- BLM Road
- Municipal Road
- Private Road
- Other Road
- County Boundary
- City Limits
- County Structures
- Place Name
- Fire Station
- Airport Runway
- Controlled access
- Highway or ramp
- Local connector
- Local or 4WD road
- Tunnel
- Ferry
- Highway or ramp
- Local connector
- Local or 4WD road
- Highway or ramp
- Local connector
- Local or 4WD road
- Railroad
- Alaska Pipeline
- Gaging Station
- Spring
- Waterfall
- Well
- Perennial Stream
- Non-Perennial Stream
- Perennial Lake
- Swamp, Marsh
- Intermittent Lake
- Perennial Lake
- Rapids
- State or Territory
- County or Equivalent
- Bureau of Land Management
- Index
- Intermediate
- Depression Index
- Depression Intermediate
- Twin Ring
- Section
- Quad frame
- BPA Transmission Lines



9/15/2020 2003
Acres from IR
North American 1983 Datum, Lat/Long Grid



122°45'W

122°40'W

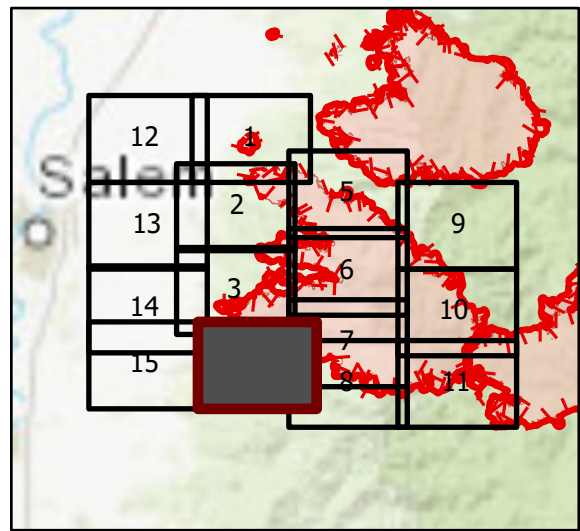
122°35'W

44°50'N

OPS Tile 4

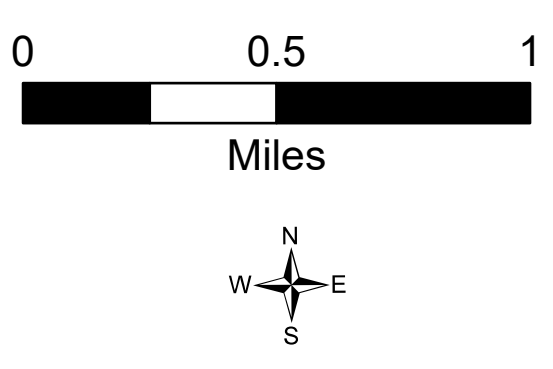
Beachie Creek Fire
ORWIF-200299
09/16/2020 24hr

190,909 acres at
09/14/20 @ 2225

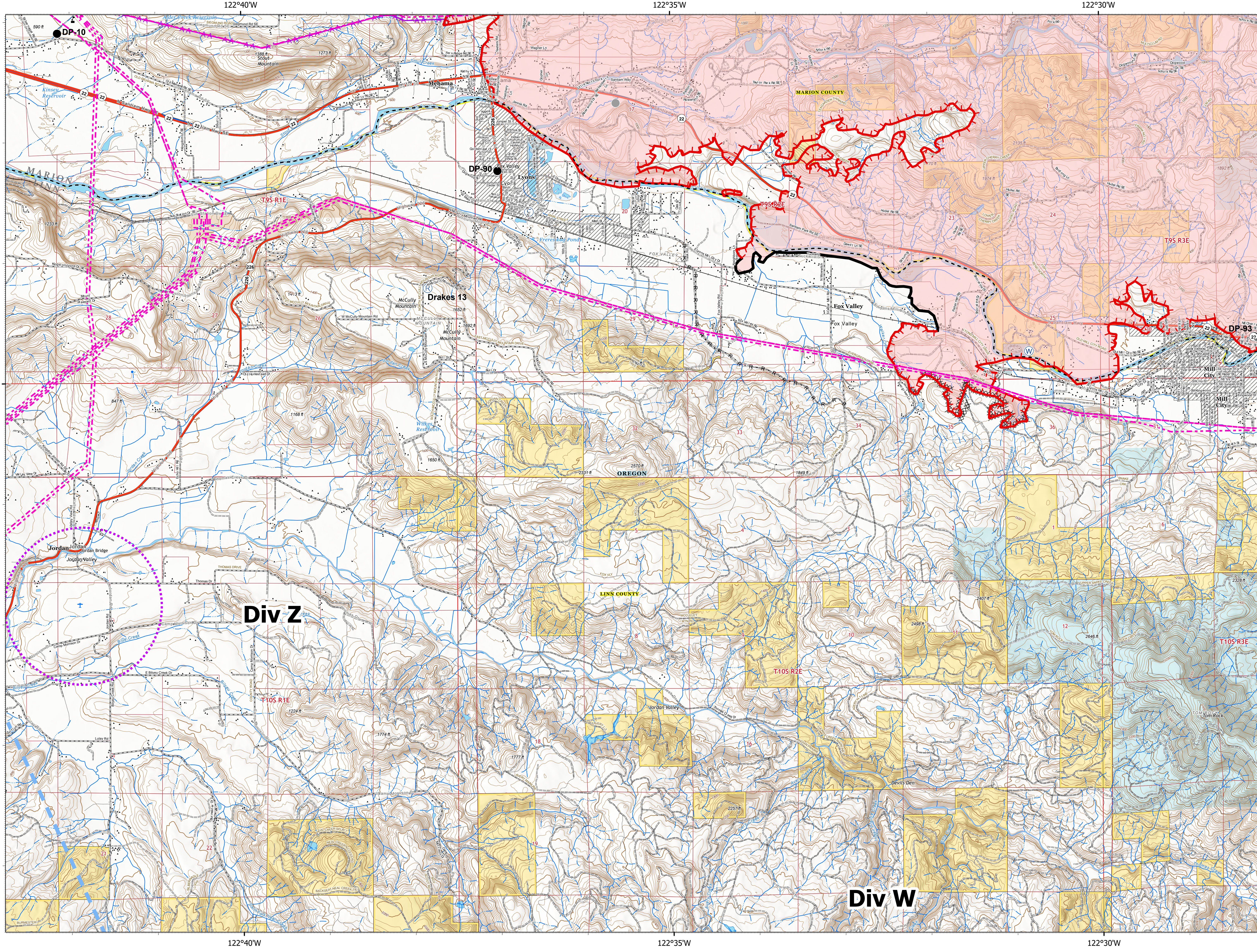


Page 4 of 15

- | | |
|---------------------------------|-----------------------------|
| ● Contained Line | ● Place Name |
| ⊗ Completed Dotted Line | ● Fire Station |
| ⊗ Completed Hand Line | ● Law Enforcement |
| ⊗ Road as Completed Line | ⊕ Airstrip |
| ⊗ Aerial Hazard | ⊕ Airport Runway |
| ⊗ Temporary Flight Restriction | ⊕ Controlled Access |
| ⊗ UAS Launch and Recovery Zone | ⊕ Highway or ramp |
| ⊗ Uncontrolled Fire Edge | ⊕ Local connector |
| ⊗ Wildlife Daily Fire Perimeter | ⊕ Local or 4WD road |
| ⊗ Bureau of Land Management | ⊕ Tunnel |
| ⊗ Other Federal | ⊕ Ferry |
| ⊗ Local Government | ⊕ Highway or ramp |
| ⊗ Private/Unknown | ⊕ Local connector |
| ⊗ State Highway | ⊕ Local or 4WD road |
| ● Drop Point | ⊕ Highway or ramp |
| ⊕ Fire Station | ⊕ Local connector |
| ⊕ Repeater | ⊕ Local or 4WD road |
| ⊕ Water Source | ⊕ Railroad |
| ⊕ Value at Risk | ⊕ Alaska Pipeline |
| ⊕ Other | ⊕ Gaging Station |
| ⊕ Contained Line | ⊕ Perennial Stream |
| ⊕ Completed Dotted Line | ⊕ Non-Perennial Stream |
| ⊕ Completed Hand Line | ⊕ Canal/Ditch |
| ⊕ Road as Completed Line | ⊕ Perennial Lake |
| ⊕ Aerial Hazard | ⊕ Swamp, Marsh |
| ⊕ Temporary Flight Restriction | ⊕ Intermittent Lake |
| ⊕ UAS Launch and Recovery Zone | ⊕ Perennial Lake |
| ⊕ Uncontrolled Fire Edge | ⊕ Rapids |
| ⊕ Wildlife Daily Fire Perimeter | ⊕ State or Territory |
| ⊕ State Highway | ⊕ County or Equivalent |
| ⊕ County Road | ⊕ Bureau of Land Management |
| ⊕ BLM Road | ⊕ Index |
| ⊕ Municipal Road | ⊕ Intermediate |
| ⊕ Private Road | ⊕ Depression Index |
| ⊕ Other Road | ⊕ Depression Intermediate |
| ⊕ County Boundary | ⊕ Twin Ring |
| ⊕ City Limits | ⊕ Section |
| ⊕ County Structures | ⊕ Quad frame |
| | ⊕ BPA Transmission Lines |



9/15/2020 2004
Acres from IR
North American 1983 Datum, Lat/Long Grid



122°40'W

122°35'W

122°30'W

44°45'N

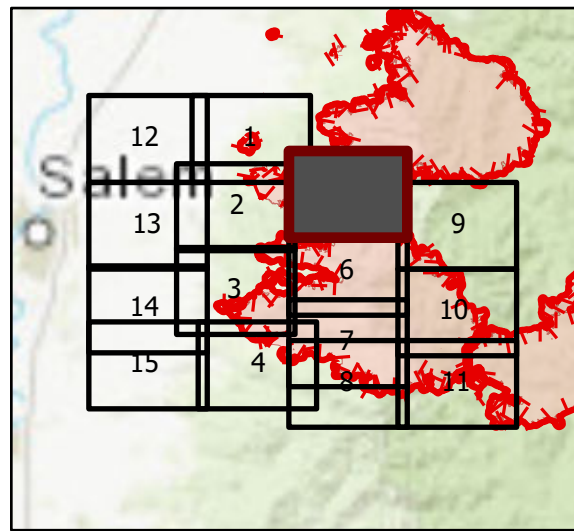
Div Z

Div W

OPS Tile 5

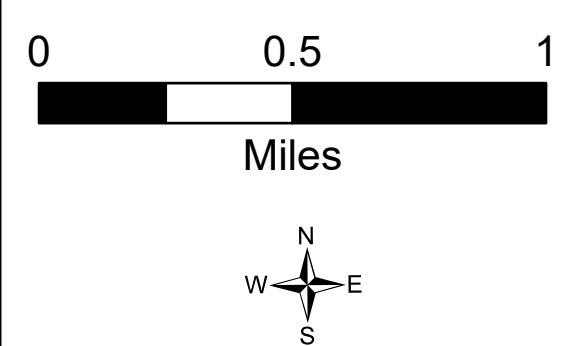
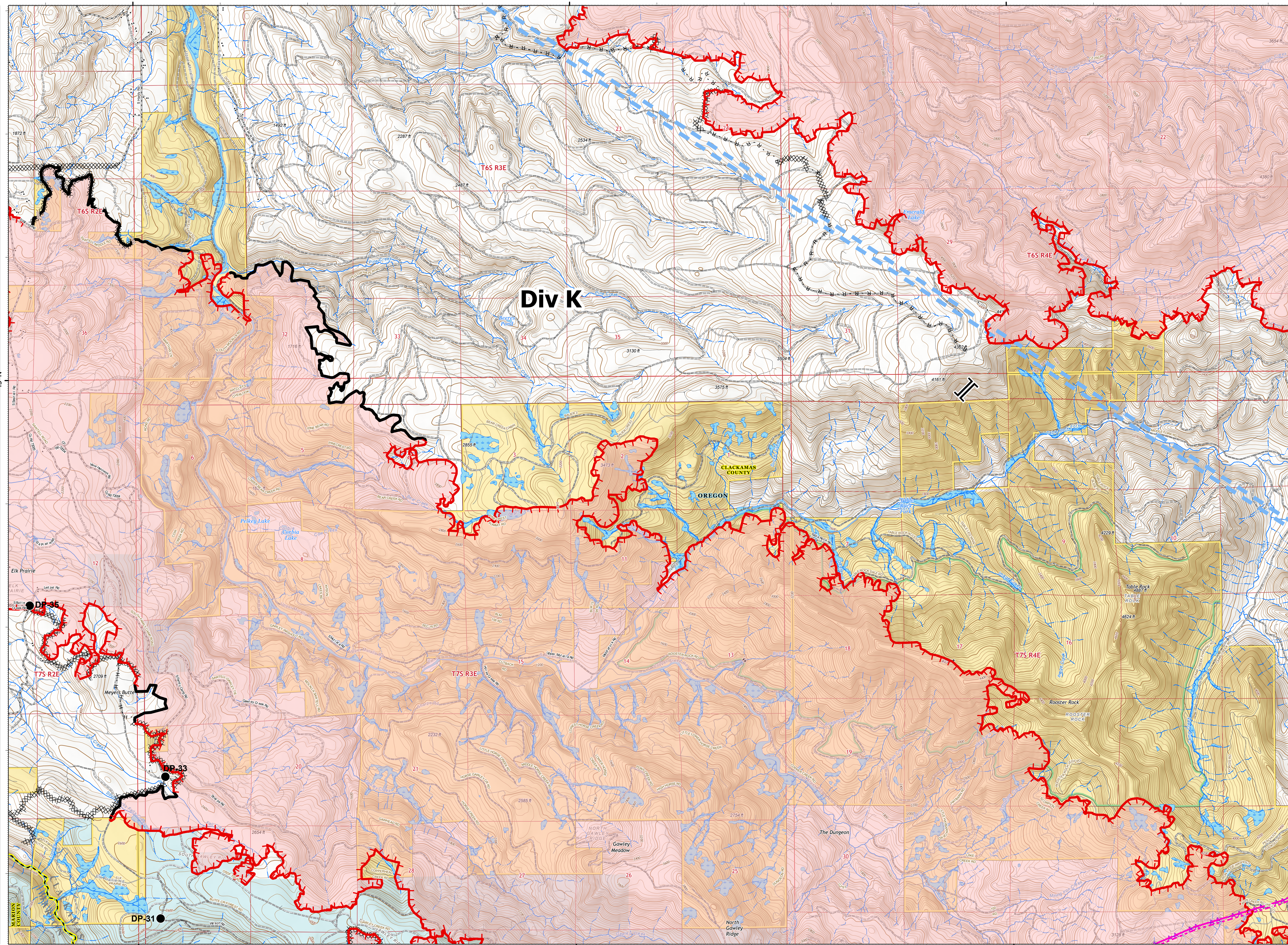
Beachie Creek Fire
ORWIF-200299
09/16/2020 24hr

190,909 acres at
09/14/20 @ 2225



Page 5 of 15

- | | | | |
|--|-------------------------------|--|---------------------------|
| | Contained Line | | Place Name |
| | Completed Dozer Line | | Airport Runway |
| | Completed Hand Line | | Controlled access |
| | Road as Completed Line | | Highway or ramp |
| | Aerial Hazard | | Local connector |
| | Temporary Flight Restriction | | Local or 4WD road |
| | Uncontrolled Fire Edge | | Tunnel |
| | Wildfire Daily Fire Perimeter | | Ferry |
| | State | | Local or 4WD road |
| | Private/Unknown | | Alaska Pipeline |
| | Drop Point | | Gaging Station |
| | Branch Break | | Perennial Stream |
| | Contained Line | | Non-Perennial Stream |
| | Completed Dozer Line | | Perennial Lake |
| | Completed Hand Line | | Swamp, Marsh |
| | Road as Completed Line | | Intermittent Lake |
| | Aerial Hazard | | Perennial Lake |
| | Temporary Flight Restriction | | State or Territory |
| | Uncontrolled Fire Edge | | County or Equivalent |
| | Wildfire Daily Fire Perimeter | | Wilderness |
| | State | | Bureau of Land Management |
| | Private/Unknown | | Index |
| | Drop Point | | Intermediate |
| | Branch Break | | Depression Intermediate |
| | Contained Line | | Twin Ring |
| | Completed Dozer Line | | Section |
| | Completed Hand Line | | Quad frame |
| | Road as Completed Line | | BPA Transmission Lines |
| | Aerial Hazard | | |
| | Temporary Flight Restriction | | |
| | Uncontrolled Fire Edge | | |
| | Wildfire Daily Fire Perimeter | | |
| | State | | |
| | Private/Unknown | | |
| | Drop Point | | |
| | Branch Break | | |
| | Contained Line | | |
| | Completed Dozer Line | | |
| | Completed Hand Line | | |
| | Road as Completed Line | | |
| | Aerial Hazard | | |
| | Temporary Flight Restriction | | |
| | Uncontrolled Fire Edge | | |
| | Wildfire Daily Fire Perimeter | | |
| | State | | |
| | Private/Unknown | | |
| | Drop Point | | |
| | Branch Break | | |

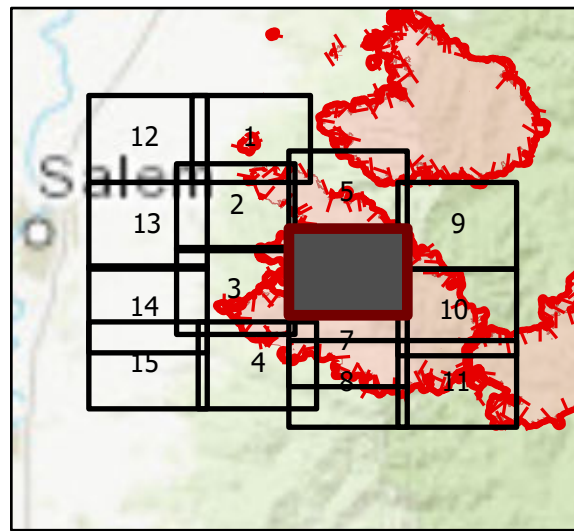


9/15/2020 2005
Acres from IR
North American 1983 Datum, Lat/Long Grid

OPS Tile 6

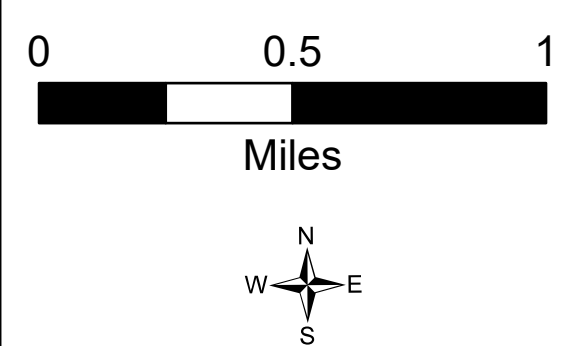
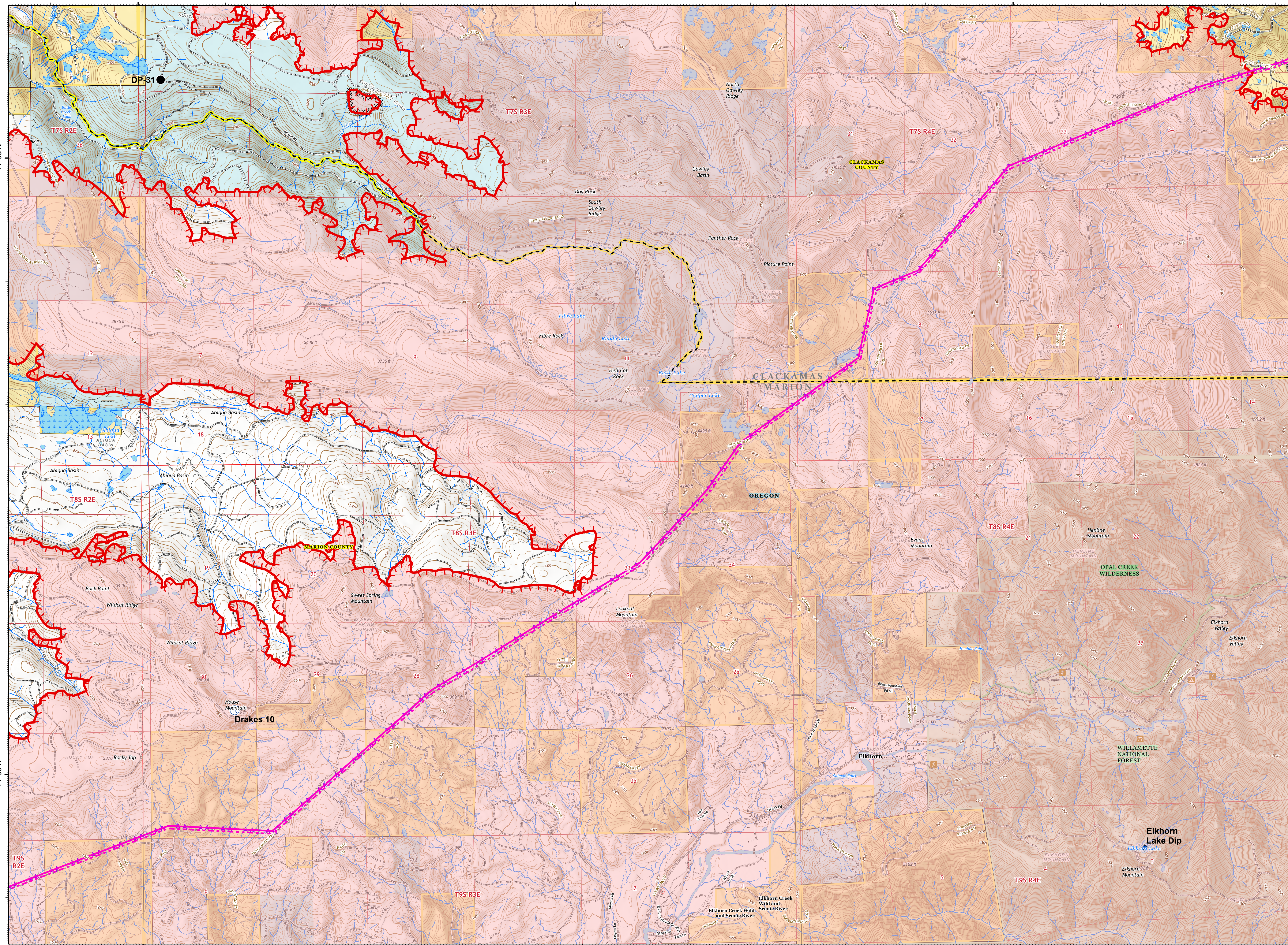
Beachie Creek Fire
ORWIF-200299
09/16/2020 24hr

190,909 acres at
09/14/20 @ 2225



Page 6 of 15

- Completed Dozer Line
- Aerial Hazard
- Uncontrolled Fire Edge
- Wildfire Daily Fire Perimeter
- Bureau of Land Management
- U.S. Forest Service
- State
- Private/Unknown
- Dip Site
- Drop Point
- Repeater
- Completed Dozer Line
- Aerial Hazard
- Uncontrolled Fire Edge
- Wildfire Daily Fire Perimeter
- County Road
- BLM Road
- Federal Road
- Private Road
- Other Road
- County Boundary
- County Structures
- Place Name
- Fire Station
- Campground
- Trailhead
- Picnic Area
- Airport Runway
- Controlled access
- Highway or ramp
- Local connector
- Local or 4WD road
- Tunnel
- Ferry
- Local or 4WD road
- State
- Local or 4WD road
- Alaska Pipeline
- Waterfall
- Perennial Stream
- Non-Perennial Stream
- Rapids/Waterfall
- Perennial Lake
- Swamp, Marsh
- Intermittent Lake
- Perennial Lake
- State or Territory
- County or Equivalent
- Wilderness
- Forest Service
- Bureau of Land Management
- Index
- Intermediate
- Depression Index
- Depression Intermediate
- Tri-Range
- Section
- Quad frame
- BPA Transmission Lines

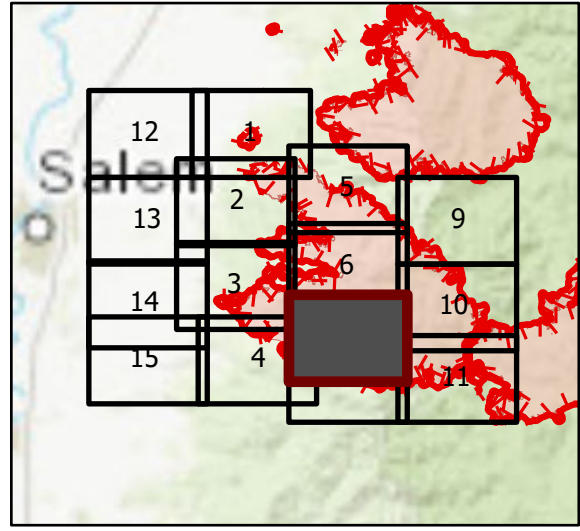


9/15/2020 2006
Acres from IR
North American 1983 Datum, Lat/Long Grid

OPS Tile 7

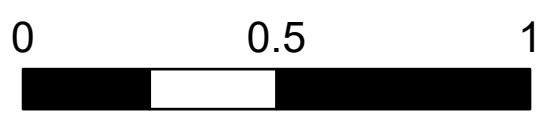
Beachie Creek Fire
ORWIF-200299
09/16/2020 24hr

190,909 acres at
09/14/20 @ 2225

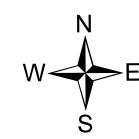


Page 7 of 15

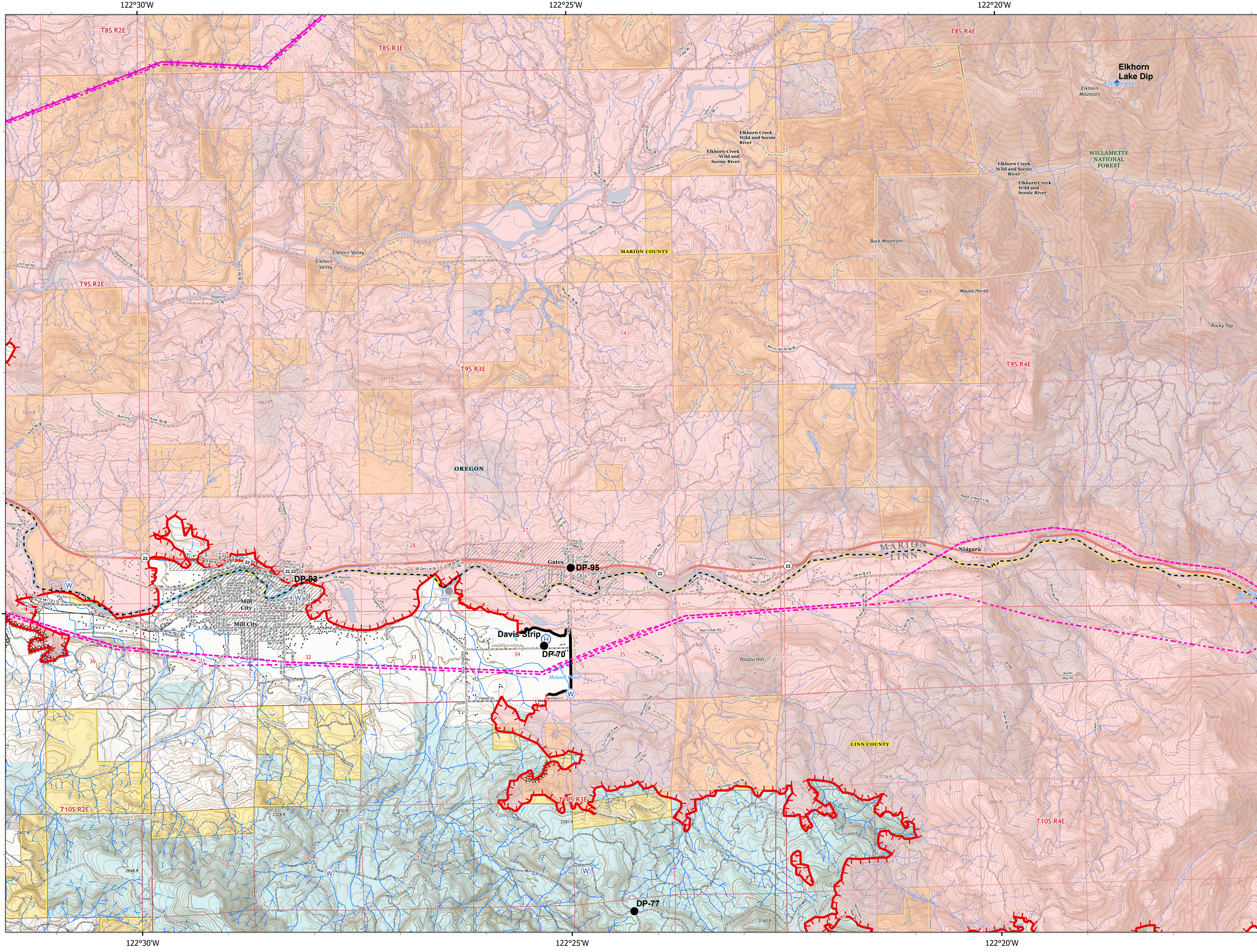
- Contained Line
- Completed Dozer Line
- Aerial Hazard
- Wildfire Daily Fire Perimeter
- Bureau of Land Management
- U.S. Forest Service
- Other Federal
- State
- Local Government
- Private/Unknown
- State Highway
- Bridge
- Dip Site
- Drop Point
- Helibase
- Water Source
- Other
- Law Enforcement
- Airstrip
- Approp Runway
- Controlled access
- Highway or ramp
- Local connector
- Local or 4WD road
- Tunnel
- Highway or ramp
- Local or 4WD road
- Highway or ramp
- Local or 4WD road
- Railroad
- Alaska Pipeline
- Gaging Station
- Perennial Stream
- Non-Perennial Stream
- Canal/Ditch
- Rapids/Waterfall
- Perennial Lake
- Swamp, Marsh
- Perennial Lake
- Dam
- State or Territory
- County or Equivalent
- Forest Service
- Bureau of Land Management
- Index
- Intermediate
- Depression Index
- Depression Intermediate
- Twin Ring
- Section
- Quid frame
- BPA Transmission Lines



Miles



9/15/2020 2007
Acres from IR
North American 1983 Datum, Lat,Long Grid



122°30'W

122°25'W

122°20'W

44°55'N

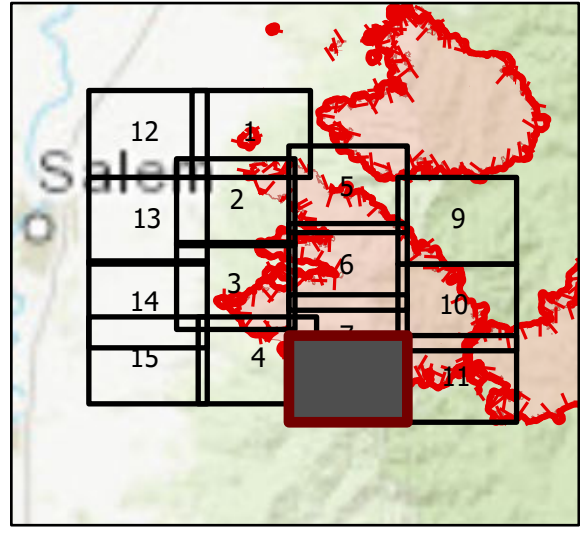
44°50'N

44°45'N

OPS Tile 8

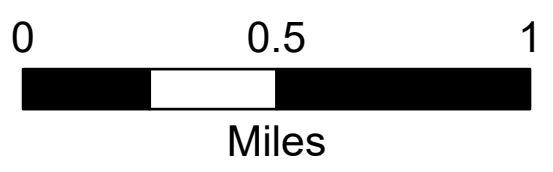
Beachie Creek Fire
ORWIF-200299
09/16/2020 24hr

190,909 acres at
09/14/20 @ 2225

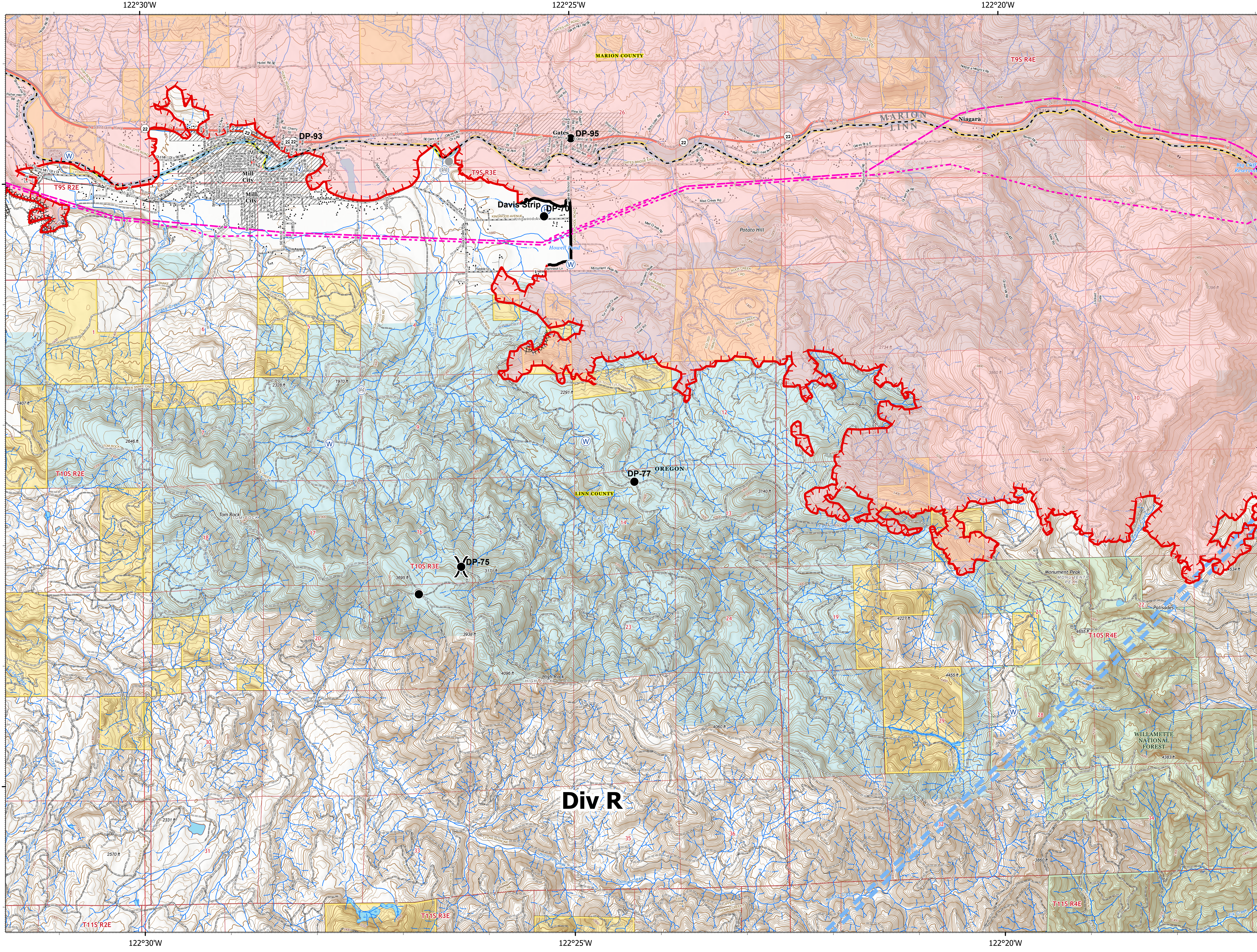


Page 8 of 15

- Contained Line
- Completed Dozer Line
- Temporary Flight Restriction
- Uncontrolled Fire Edge
- Wildfire Daily Fire Perimeter
- Bureau of Land Management
- U.S. Forest Service
- Other Federal
- State
- Local Government
- Private/Unknown
- State Highway
- Bridge
- Drop Point
- Helibase
- Water Source
- Other
- Division Break
- County Road
- BLM Road
- Federal Road
- Municipal Road
- Private Road
- Other Road
- County Boundary
- City Limits
- County Structures
- Place Name
- Fire Station
- Law Enforcement
- Airstrip
- Controlled access
- Highway or ramp
- Local connector
- Local or 4WD road
- Tunnel
- Ferry
- Highway or ramp
- Local or 4WD road
- Highway or ramp
- Local or 4WD road
- Railroad
- Alaska Pipeline
- Gaging Station
- Waterfall
- Perennial Stream
- Non-Perennial Stream
- Canal/Ditch
- Perennial Lake
- Swamp, Marsh
- Intermittent Lake
- Perennial Lake
- Dam
- State or Territory
- County or Equivalent
- Forest Service
- Bureau of Land Management
- Index
- Intermediate
- Depression Index
- Depression Intermediate
- Twin Ring
- Section
- Quad frame
- BPA Transmission Lines



9/15/2020 2008
Acres from IR
North American 1983 Datum, Lat/Long Grid



122°30'W

122°25'W

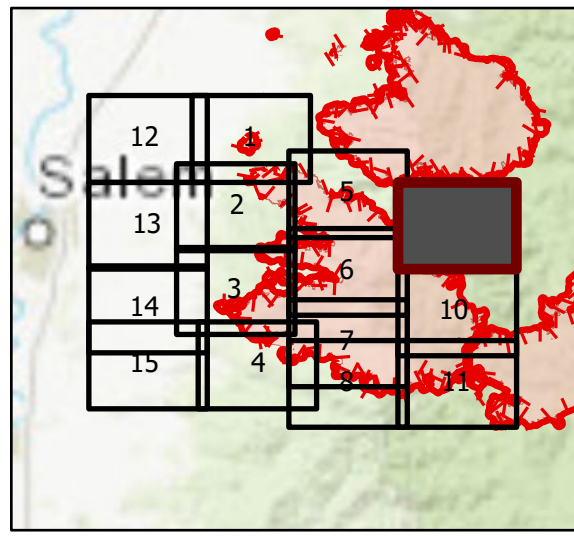
122°20'W

44°40'N

OPS Tile 9

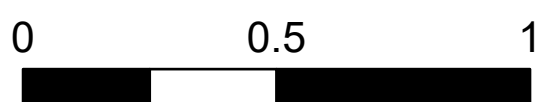
Beachie Creek Fire
ORWIF-200299
09/16/2020 24hr

190,909 acres at
09/14/20 @ 2225

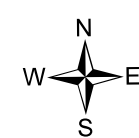


Page 9 of 15

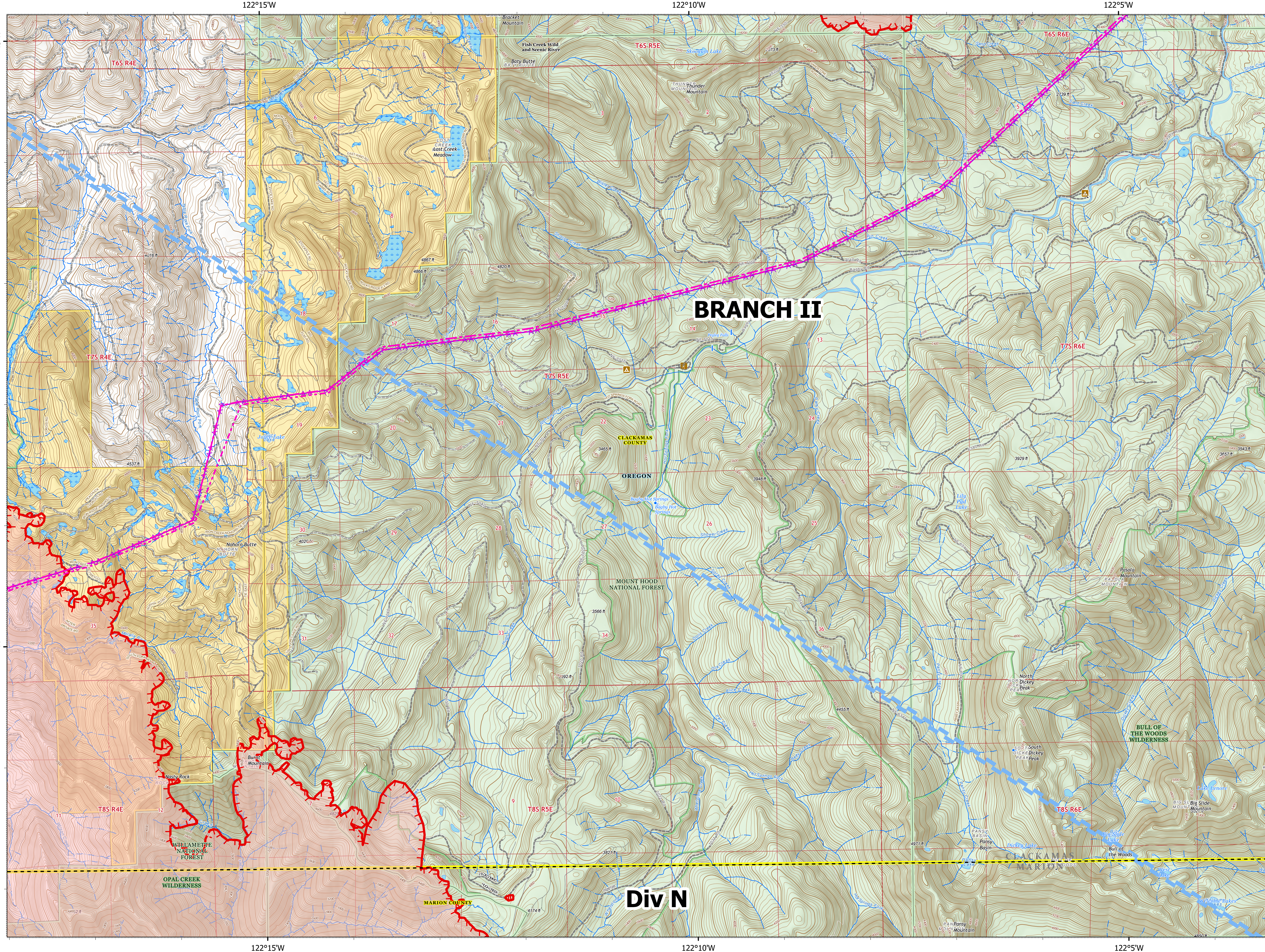
- Aerial Hazard
- Temporary Flight Restriction
- Uncontrolled Fire Edge
- Wildfire Daily Fire Perimeter
- Bureau of Land Management
- U.S. Forest Service
- Private/Unknown
- Aerial Hazard
- Temporary Flight Restriction
- Uncontrolled Fire Edge
- Wildfire Daily Fire Perimeter
- BLM Road
- Federal Road
- Private Road
- County Boundary
- County Structures
- Place Name
- Campground
- Trailhead
- Airport Runway
- Controlled access
- Highway or ramp
- Local connector
- Local or 4WD road
- Tunnel
- Ferry
- Local or 4WD road
- Local or 4WD road
- Alaska Pipeline
- Spring
- Waterfall
- Perennial Stream
- Non-Perennial Stream
- Perennial Lake
- Swamp, Marsh
- Intermittent Lake
- Perennial Lake
- Wash
- State or Territory
- County or Equivalent
- Wilderness
- Forest Service
- Bureau of Land Management
- Index
- Intermediate
- Depression Index
- Depression Intermediate
- Twin Ring
- Section
- Quad frame
- BPA Transmission Lines



Miles



9/15/2020 2009
Acres from IR
North American 1983 Datum, Lat/Long Grid



BRANCH II

Div N

122°15'W

122°10'W

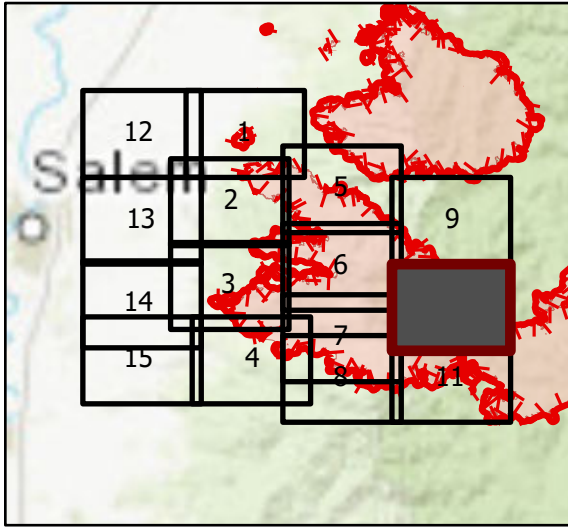
122°5'W

49°55'N

OPS Tile 10

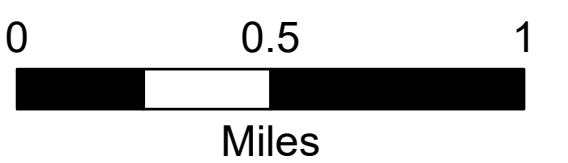
Beachie Creek Fire
ORWIF-200299
09/16/2020 24hr

190,909 acres at
09/14/20 @ 2225

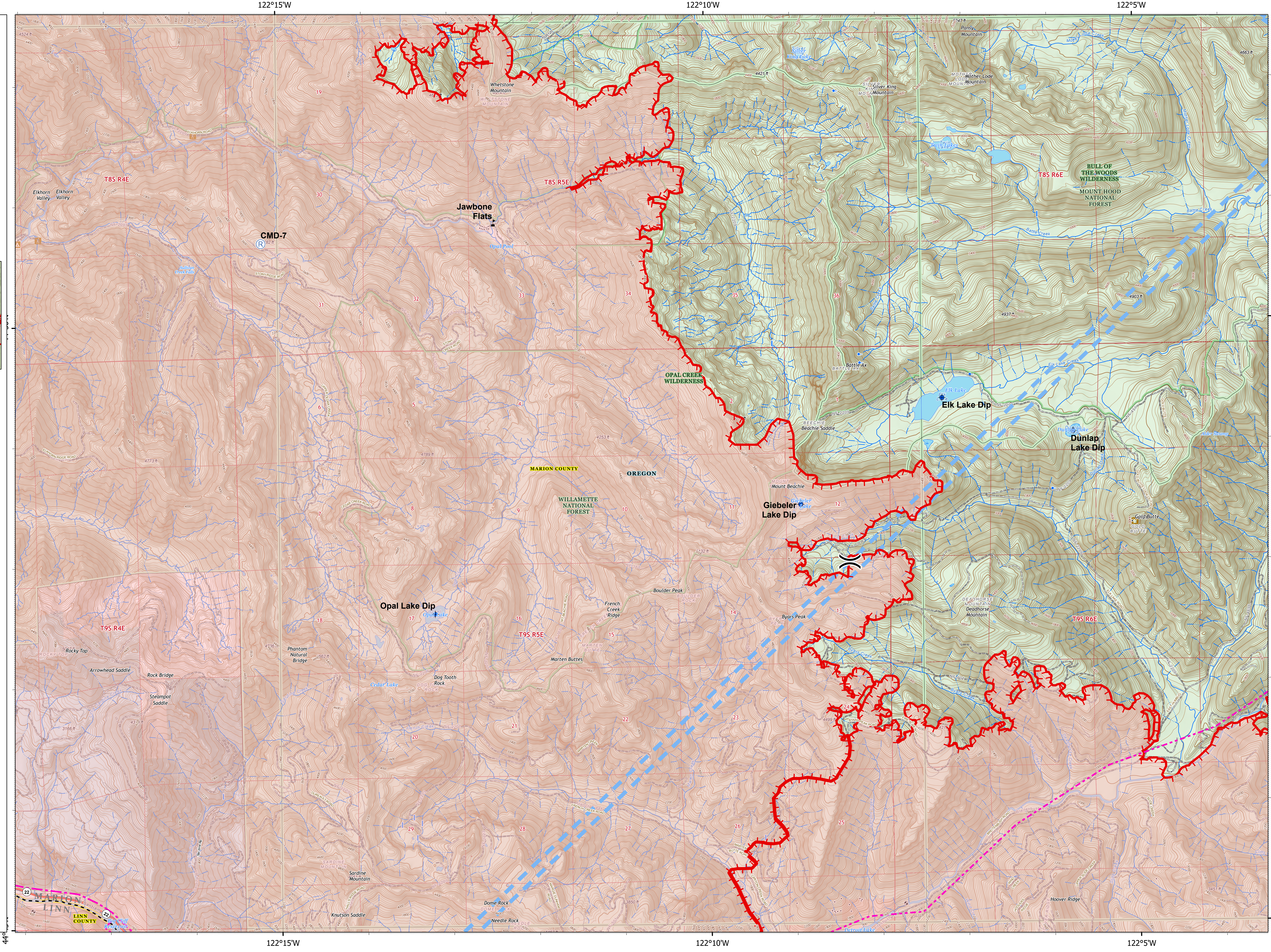


Page 10 of 15

- | | |
|-------------------------------|-------------------------|
| Temporary Flight Restriction | Highway or ramp |
| Uncontrolled Fire Edge | Local connector |
| Wildfire Daily Fire Perimeter | Local or 4WD road |
| U.S. Forest Service | Tunnel |
| Other Federal | Ferry |
| State | Highway or ramp |
| Local Government | Local or 4WD road |
| Private/Unknown | Highway or ramp |
| State Highway | Local or 4WD road |
| Dip Site | Alaska Pipeline |
| Repeater | Gaging Station |
| Value at Risk | Spring |
| Division Break | Waterfall |
| Temporary Flight Restriction | Perennial Stream |
| Uncontrolled Fire Edge | Non-Perennial Stream |
| Wildfire Daily Fire Perimeter | Perennial Lake |
| State Highway | Intermittent Lake |
| Federal Road | Perennial Lake |
| Private Road | Swamp, Marsh |
| County Boundary | Intermittent Lake |
| County Structures | Perennial Lake |
| Place Name | State or Territory |
| Campground | County or Equivalent |
| Cabin | Wilderness |
| Trailhead | Forest Service |
| Airport Runway | Index |
| Controlled access | Intermediate |
| | Depression Intermediate |
| | Twin Ring |
| | Section |
| | Quad frame |
| | BPA Transmission Lines |



9/15/2020 2010
Acres from IR
North American 1983 Datum, Lat/Long Grid



44°50'N

122°15'W

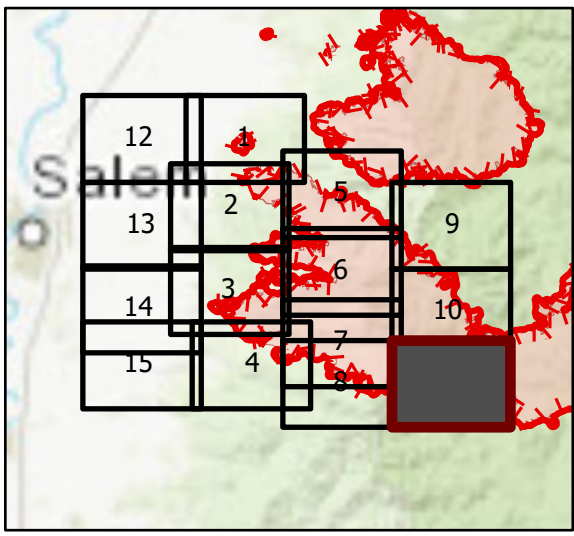
122°10'W

122°5'W

44°50'N

OPS Tile 11

Beachie Creek Fire
ORWIF-200299
09/16/2020 24hr
190,909 acres at
09/14/20 @ 2225



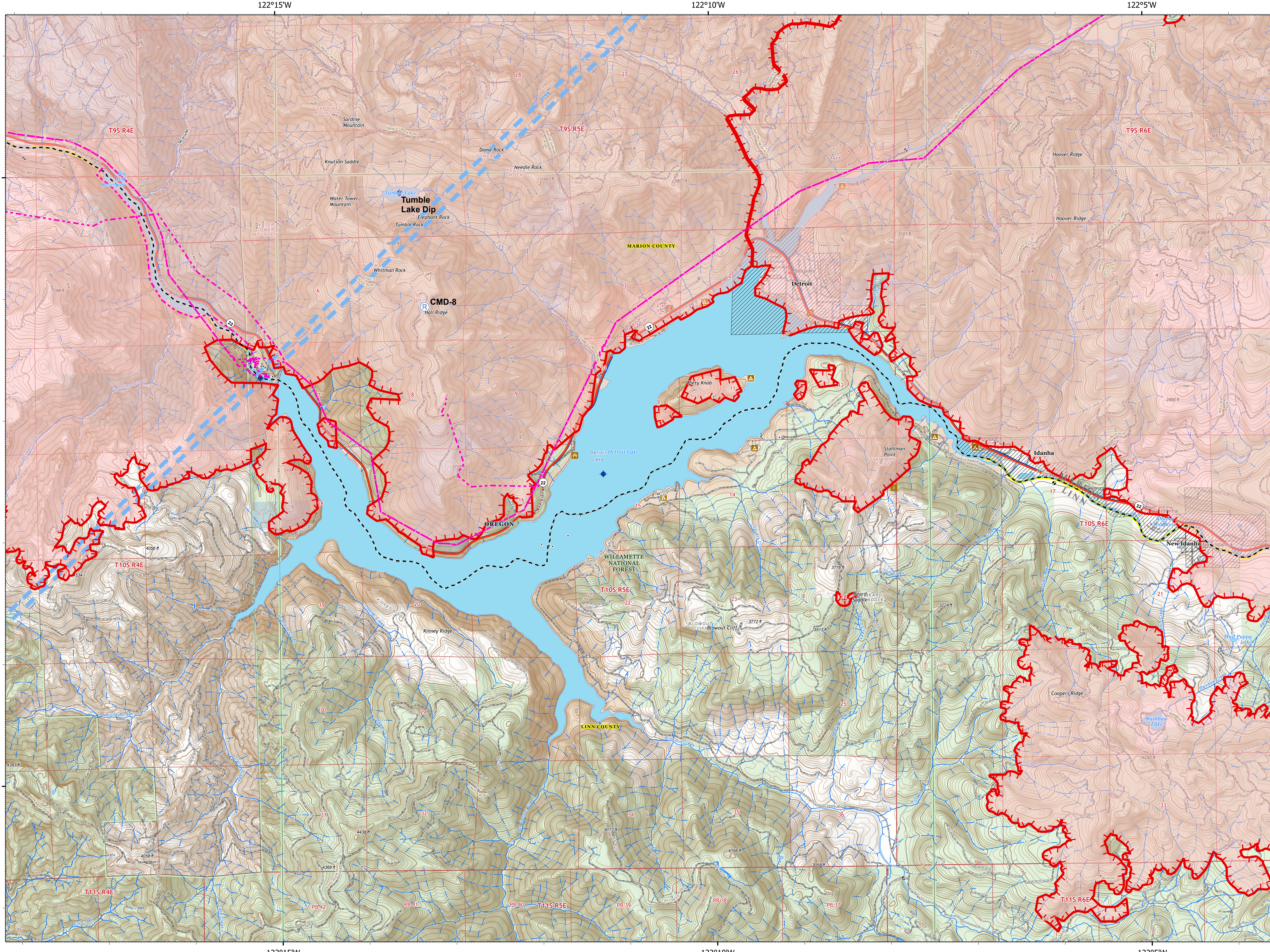
Page 11 of 15

- | | |
|-------------------------------|-------------------------|
| Temporary Flight Restriction | Highway or ramp |
| Uncontrolled Fire Edge | Local connector |
| Wildfire Daily Fire Perimeter | Local or 4WD road |
| U.S. Forest Service | Tunnel |
| Other Federal | Ferry |
| State | Highway or ramp |
| Local Government | Local or 4WD road |
| Private/Unknown | Highway or ramp |
| State Highway | Local or 4WD road |
| Dip Site | Alaska Pipeline |
| Repeater | Waterfall |
| Temporary Flight Restriction | Perennial Stream |
| Uncontrolled Fire Edge | Non-Perennial Stream |
| Wildfire Daily Fire Perimeter | Perennial Lake |
| State Highway | Swamp, Marsh |
| Federal Road | Intermittent Lake |
| Private Road | Perennial Lake |
| County Boundary | Dam |
| City Limits | State or Territory |
| County Structures | County or Equivalent |
| Place Name | Forest Service |
| Fire Station | Index |
| Campground | Intermediate |
| Ranger Station | Depression Index |
| Trailhead | Depression Intermediate |
| Picnic Area | Twin Ring |
| Airport Runway | Section |
| Controlled access | Quad frame |
| | BPA Transmission Lines |

0 0.5 1
Miles



9/15/2020 2011
Acres from IR
North American 1983 Datum, Lat/Long Grid



122°15'W

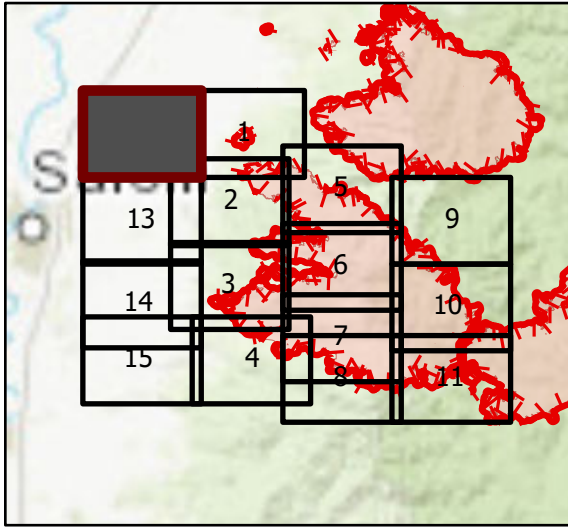
122°10'W

122°5'W

44°40'N

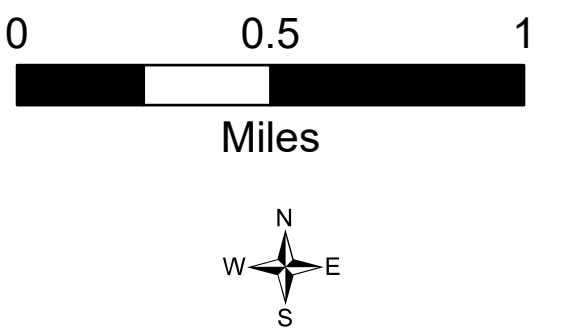
OPS Tile 12

Beachie Creek Fire
ORWIF-200299
09/16/2020 24hr
190,909 acres at
09/14/20 @ 2225

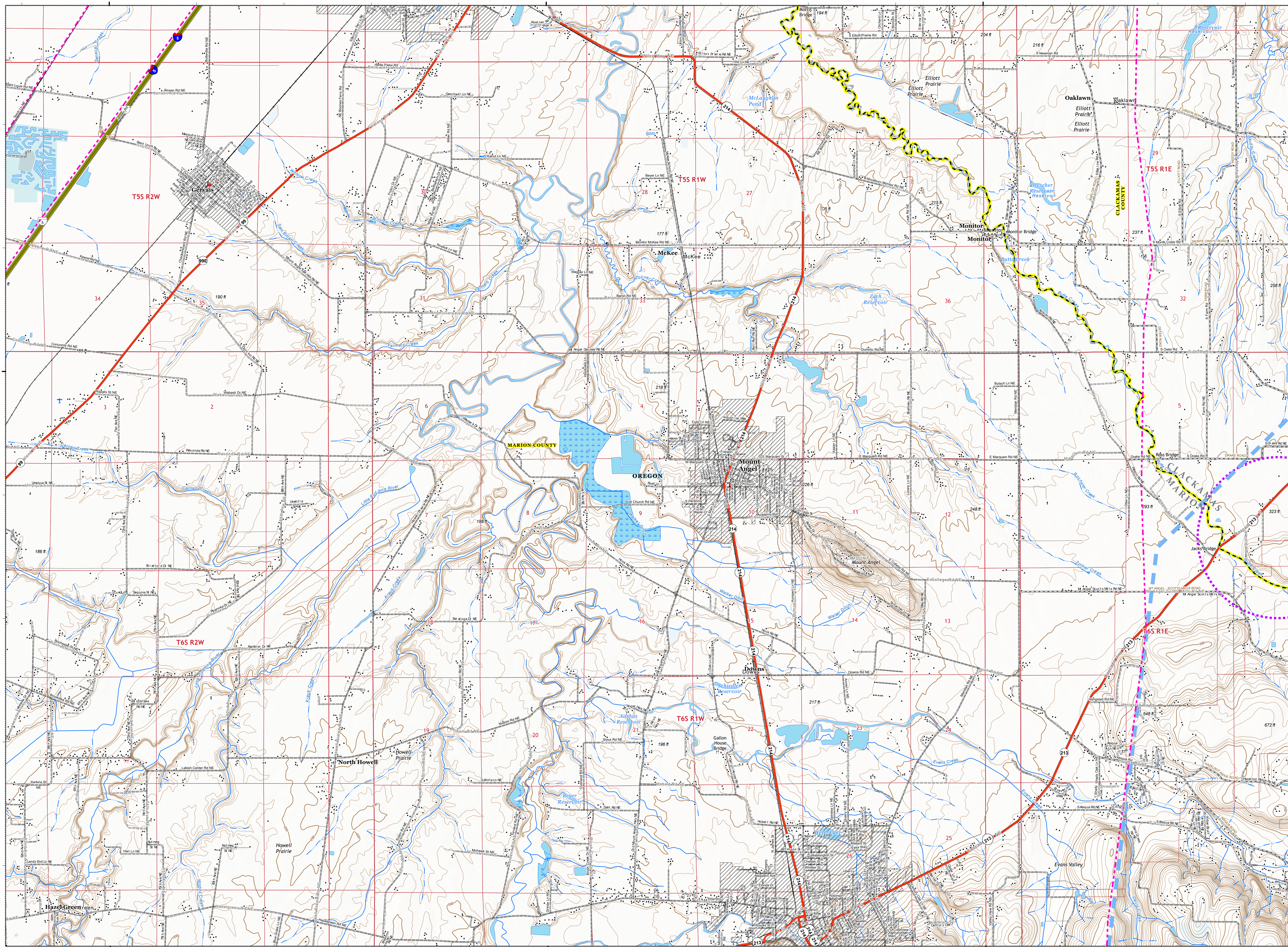


Page 12 of 15

- Temporary Flight Restriction
- UAS Launch and Recovery Zone
- State
- Local Government
- Private/Unknown
- Interstate Highway
- State Highway
- Temporary Flight Restriction
- UAS Launch and Recovery Zone
- Interstate Highway
- State Highway
- County Road
- Private Road
- County Boundary
- City Limits
- County Structures
- Place Name
- Fire Station
- Law Enforcement
- Airstrip
- Airport Runway
- Controlled access
- Highway or ramp
- Local connector
- Local or 4WD road
- Tunnel
- Ferry
- Controlled access
- Local connector
- Local or 4WD road
- Controlled access
- Local connector
- Local or 4WD road
- Railroad
- Alaska Pipeline
- Gaging Station
- Well
- Perennial Stream
- Non-Perennial Stream
- Canal/Ditch
- Nonearthen Reservoir
- Perennial Lake
- Swamp, Marsh
- Perennial Lake
- State or Territory
- County or Equivalent
- Index
- Intermediate
- Depression Intermediate
- Twin Ring
- Section
- Quad frame
- BPA Transmission Lines



9/15/2020 2011
Acres from IR
North American 1983 Datum, Lat/Long Grid



122°55'W

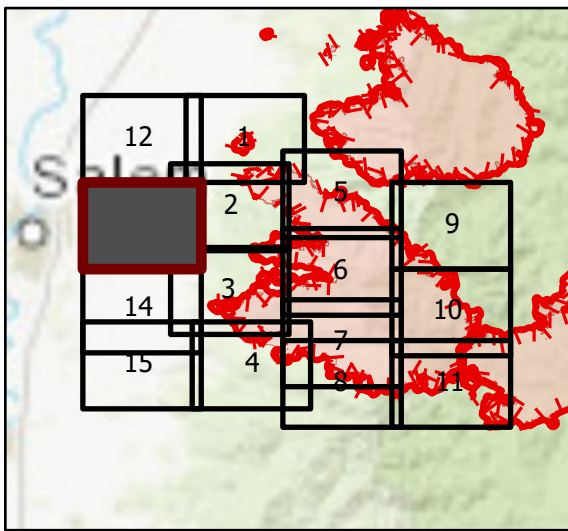
122°50'W

122°45'W

45°55'N

OPS Tile 13

Beachie Creek Fire
ORWIF-200299
09/16/2020 24hr
190,909 acres at
09/14/20 @ 2225



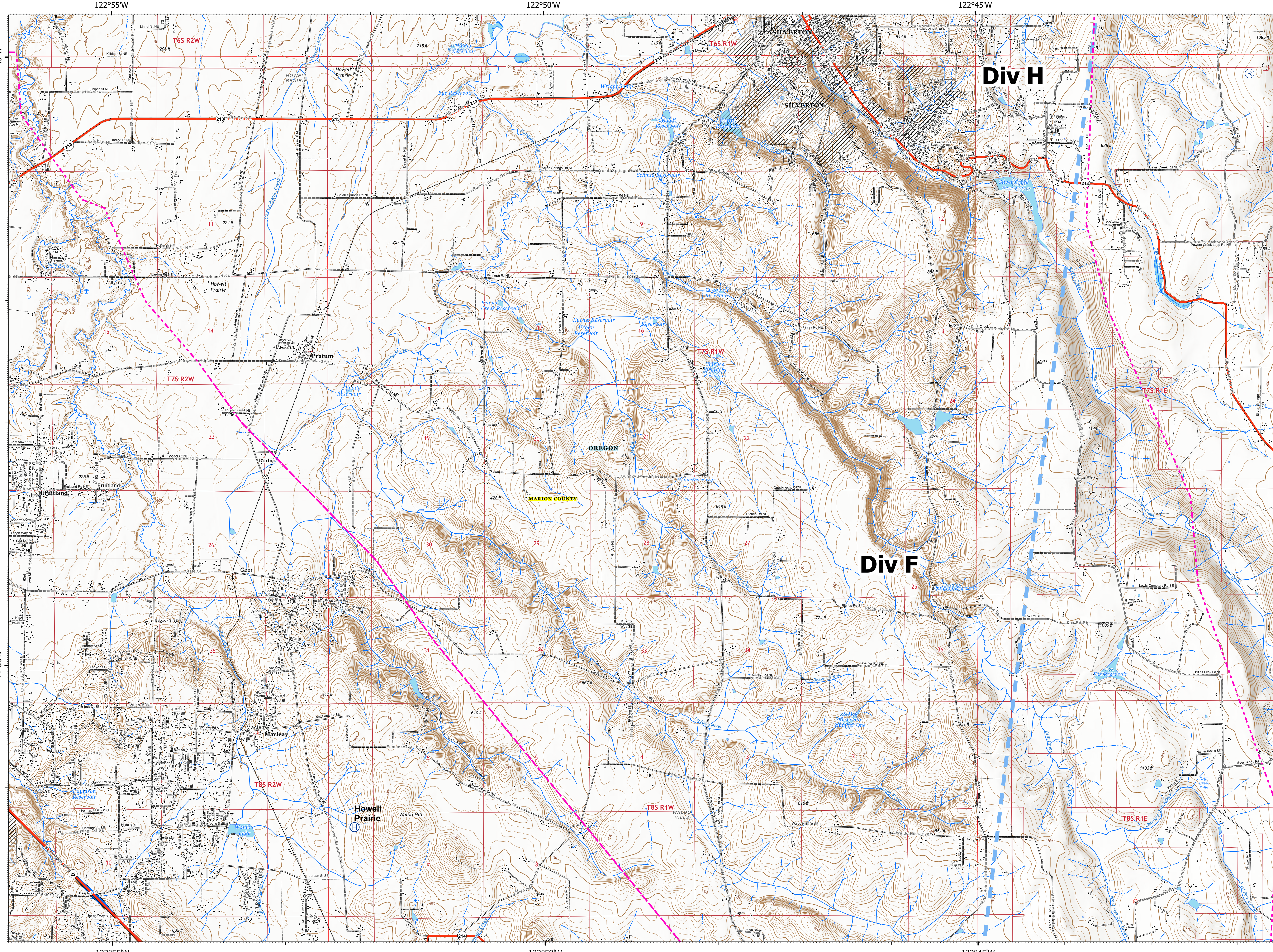
Page 13 of 15

- Temporary Flight Restriction
- Private/Unknown
- State Highway
- County Road
- Private Road
- County Boundary
- City Limits
- County Structures
- Place Name
- Hospital
- Fire Station
- Law Enforcement
- Airstrip
- Airport Runway
- Controlled access
- Highway or ramp
- Local connector
- Local or 4WD road
- Tunnel
- Ferry
- Controlled access
- Highway or ramp
- Local connector
- Local or 4WD road
- Local connector
- Local or 4WD road
- Alaska Pipeline
- Railroad
- Spring
- Waterfall
- Well
- Perennial Stream
- Non-Perennial Stream
- Nonearthen Shore
- Nonearthen Reservoir
- Perennial Lake
- Swamp, Marsh
- Intermittent Lake
- Perennial Lake
- Dam
- State or Territory
- County or Equivalent
- Index
- Intermediate
- Depression Index
- Depression Intermediate
- Twin Ring
- Section
- Quad frame
- BPA Transmission Lines
- Local or 4WD road
- Controlled access
- Highway or ramp
- Local connector
- Local or 4WD road
- Local connector
- Local or 4WD road
- Alaska Pipeline
- Railroad
- Spring
- Waterfall
- Well
- Perennial Stream
- Non-Perennial Stream
- Nonearthen Shore
- Nonearthen Reservoir
- Perennial Lake
- Swamp, Marsh
- Intermittent Lake
- Perennial Lake
- Dam
- State or Territory
- County or Equivalent
- Index
- Intermediate
- Depression Index
- Depression Intermediate
- Twin Ring
- Section
- Quad frame
- BPA Transmission Lines

0 0.5 1
Miles



9/15/2020 2012
Acres from IR
North American 1983 Datum, Lat/Long Grid



122°55'W

122°50'W

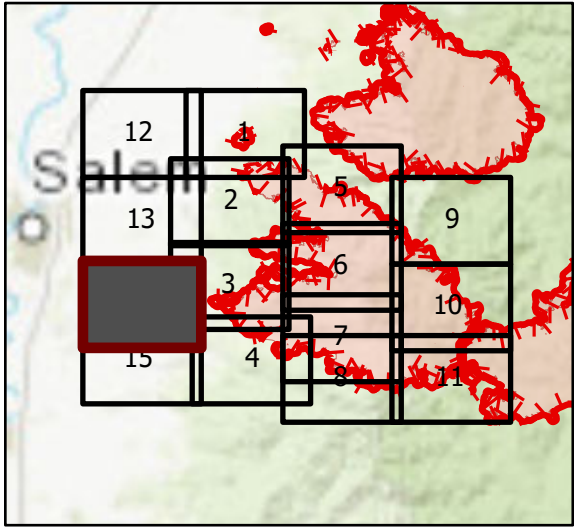
122°45'W

44°55'N

OPS Tile 14

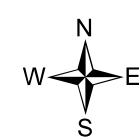
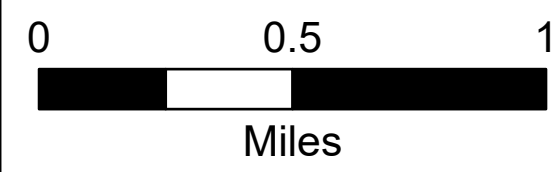
Beachie Creek Fire
ORWIF-200299
09/16/2020 24hr

190,909 acres at
09/14/20 @ 2225

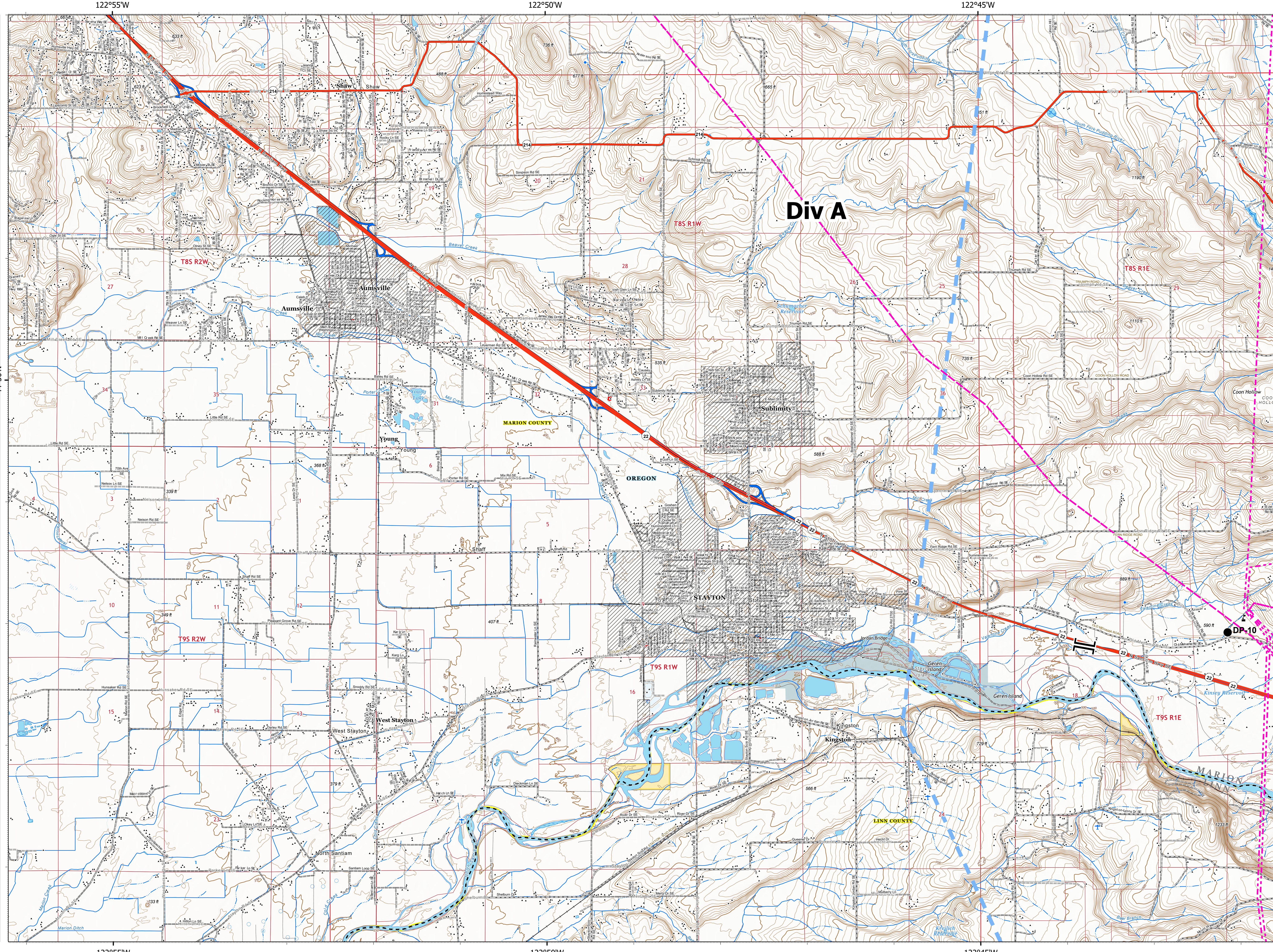


Page 14 of 15

- Temporary Flight Restriction
- Bureau of Land Management
- Local Government
- Private/Unknown
- State Highway
- Drop Point
- Value at Risk
- Branch Break
- Temporary Flight Restriction
- State Highway
- County Road
- Private Road
- County Boundary
- City Limits
- County Structures
- Place Name
- Hospital
- Fire Station
- Law Enforcement
- Airstrip
- Airport Runway
- Controlled access
- Highway or ramp
- Local connector
- Local or 4WD road
- Tunnel
- Ferry
- Controlled access
- Highway or ramp
- Local connector
- Local or 4WD road
- Controlled access
- Highway or ramp
- Local connector
- Local or 4WD road
- Alaska Pipeline
- Spring
- Well
- Perennial Stream
- Non-Perennial Stream
- Canal/Ditch
- Perennial Lake
- Swamp, Marsh
- Intermittent Lake
- Perennial Lake
- State or Territory
- County or Equivalent
- Bureau of Land Management
- Index
- Intermediate
- Depression Index
- Depression Intermediate
- Controlled access
- Highway or ramp
- Local connector
- Local or 4WD road
- Twin Ring
- Section
- Quad frame
- BPA Transmission Lines



9/15/2020 2013
Acres from IR
North American 1983 Datum, Lat/Long Grid



122°55'W

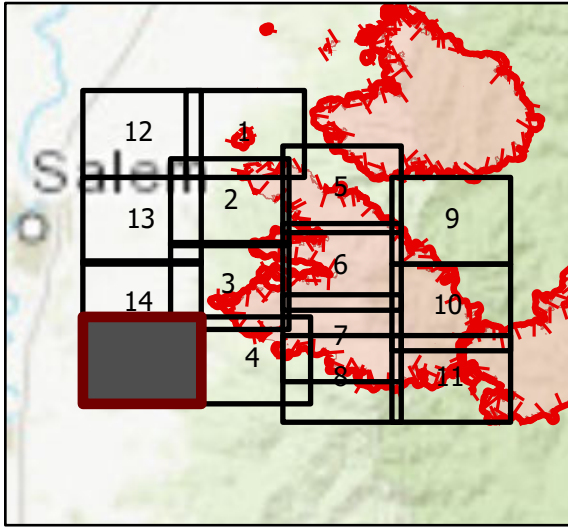
122°50'W

122°45'W

44°50'N

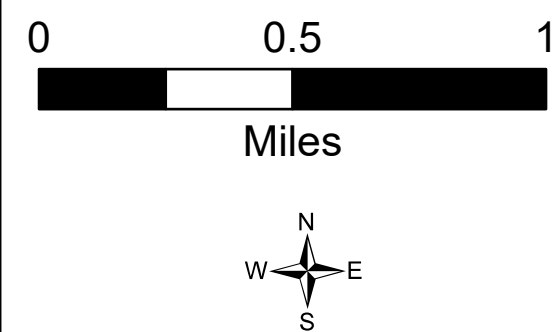
OPS Tile 15

Beachie Creek Fire
ORWIF-200299
09/16/2020 24hr
190,909 acres at
09/14/20 @ 2225

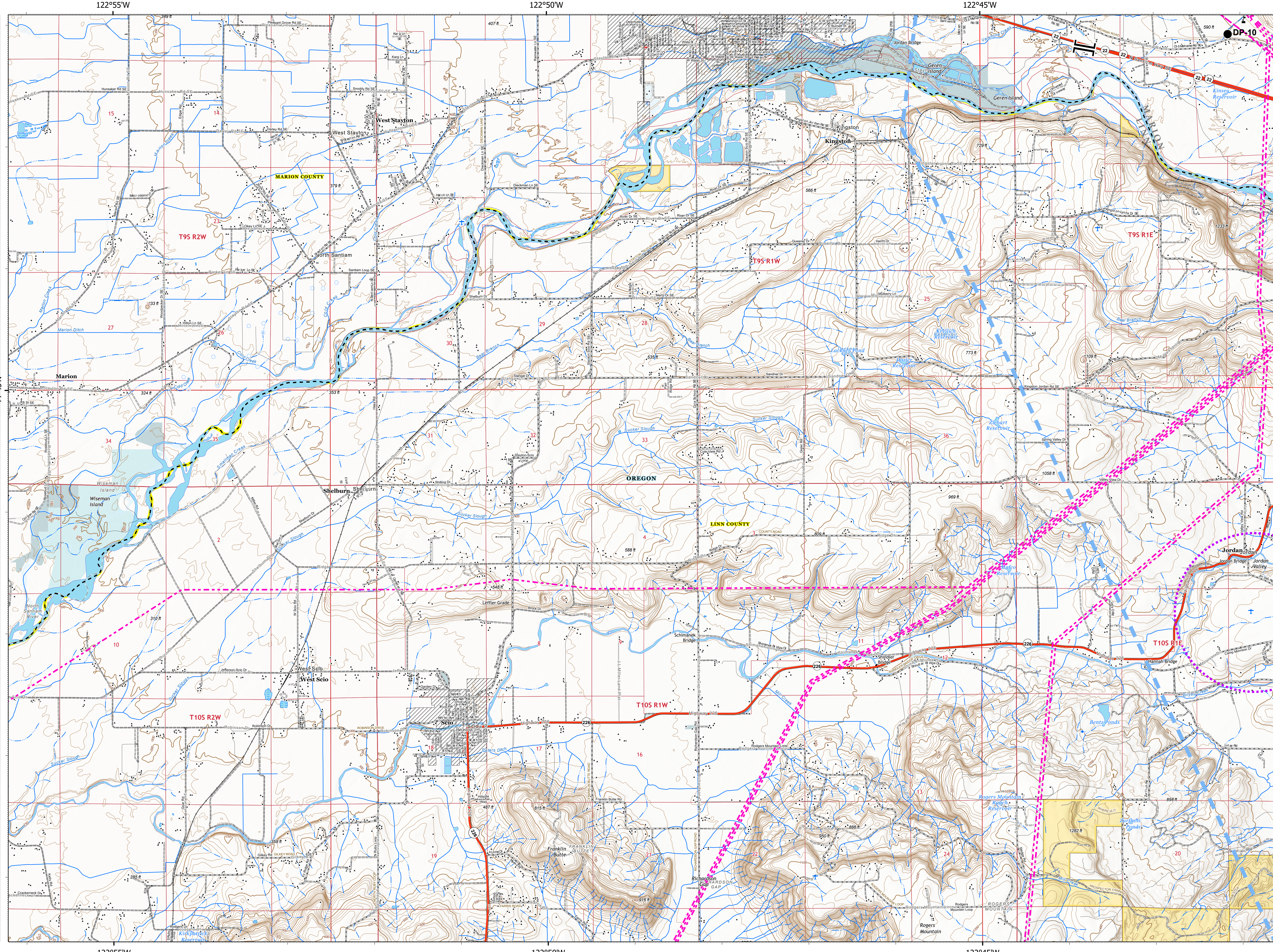


Page 15 of 15

- Temporary Flight Restriction
- UAS Launch and Recovery Zone
- Bureau of Land Management
- State
- Local Government
- Private/Unknown
- State Highway
- Drop Point
- Value at Risk
- Branch Break
- Temporary Flight Restriction
- UAS Launch and Recovery Zone
- State Highway
- County Road
- BLM Road
- Municipal Road
- Private Road
- County Boundary
- City Limits
- County Structures
- Place Name
- Index
- Fire Station
- Law Enforcement
- Airstrip
- Airport Runway
- Controlled access
- Highway or ramp
- Local connector
- Local or 4WD road
- Tunnel
- Ferry
- Highway or ramp
- Local connector
- Local or 4WD road
- Highway or ramp
- Local connector
- Local or 4WD road
- Railroad
- Alaska Pipeline
- Gaging Station
- Spring
- Well
- Perennial Stream
- Non-Perennial Stream
- Canal/Ditch
- Nonearthen Reservoir
- Perennial Lake
- Intermittent Lake
- Perennial Lake
- State or Territory
- County or Equivalent
- Bureau of Land Management
- Intermediate
- Depression Index
- Depression Intermediate
- Twin Ring
- Section
- Quad frame
- BPA Transmission Lines



9/15/2020 2013
Acres from IR
North American 1983 Datum, Lat/Long Grid



122°55'W

122°50'W

122°45'W

44°45'N