

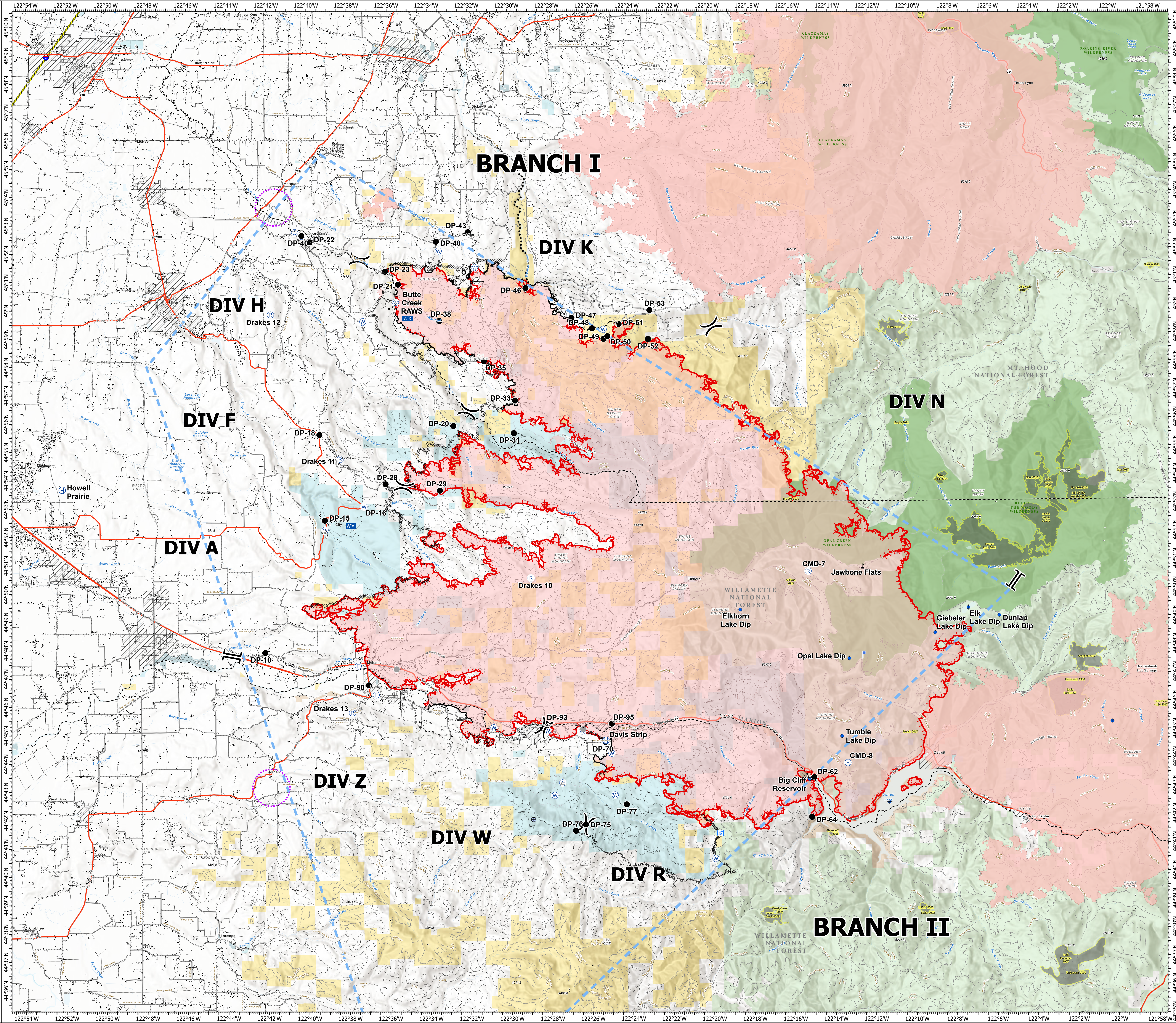
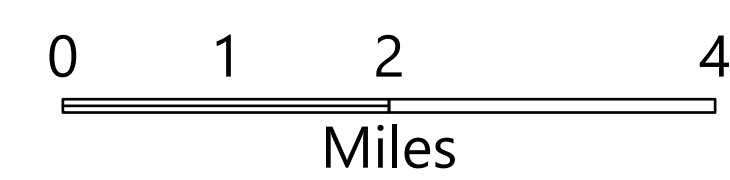
# Operations

Beachie Creek  
ORWIF-200299

9/17/20

191,661 acres at 09/16/20 @ 2224

- County Boundary
- Bridge
- Camp
- Closure
- Culvert
- Dip Site
- Drop Point
- Fire Station
- Gate
- Helibase
- Internet Access
- Lookout
- Mobile Weather Unit
- Repeater
- Resource Location
- Stream Crossing
- Water Source
- Water Development or Draft Site
- Value at Risk
- Other
- Division Break
- Branch Break
- Uncontrolled Fire Edge
- Contained Line
- Completed Dozer Line
- Completed Hand Line
- Road as Completed Line
- Access or Improved Road
- Fire Break Planned or Incomplete
- Planned Fire Line
- Planned Secondary Line
- Temporary Flight Restriction
- UAS Launch and Recovery Zone
- Other
- Wildfire Daily Fire Perimeter
- City Limits
- County Structures
- Historic Fire Perimeters
- Ranger District Boundaries
- Bureau of Land Management
- U.S. Forest Service
- Other Federal
- State
- Local Government
- Private/Unknown
- Wilderness



## BRANCH I

## DIV K

## DIV H

## DIV N

## DIV F

## DIV A

## DIV Z

## DIV W

## DIV R

## BRANCH II