

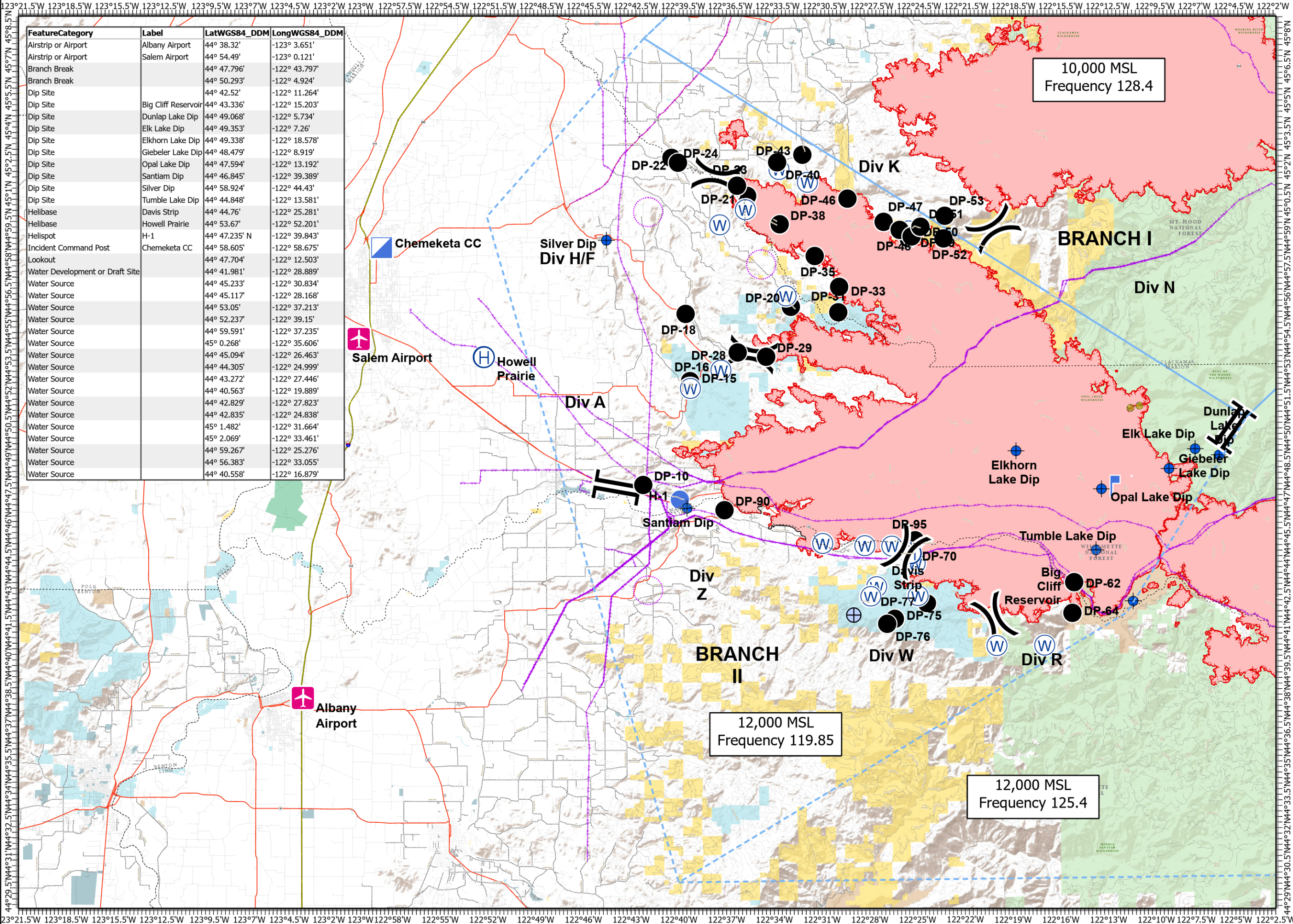
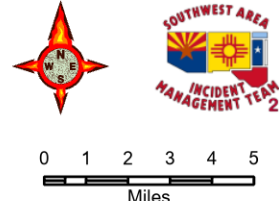
Pilot Map

Beachie Creek
ORWIF-200299
9/18/20

192,012 acres at 09/17/20 @ 2234

-  Airstrip or Airport
-  Dip Site
-  Drop Point
-  Helibase
-  Helispot
-  Incident Command Post
-  Lookout
-  Water Source
-  Water Development or Draft Site
-  Division Break
-  Branch Break
-  BPA Transmission Lines
-  Mine Waste Aerial Avoidance

FeatureCategory	Label	LatWGS84_DDM	LongWGS84_DDM
Airstrip or Airport	Albany Airport	44° 38.32'	-123° 3.651'
Airstrip or Airport	Salem Airport	44° 54.49'	-123° 0.121'
Branch Break		44° 47.796'	-122° 43.797'
Branch Break		44° 50.293'	-122° 4.924'
Dip Site		44° 42.52'	-122° 11.264'
Dip Site	Big Cliff Reservoir	44° 43.336'	-122° 15.203'
Dip Site	Dunlap Lake Dip	44° 49.068'	-122° 5.734'
Dip Site	Elk Lake Dip	44° 49.353'	-122° 7.26'
Dip Site	Elkhorn Lake Dip	44° 49.338'	-122° 18.578'
Dip Site	Giebeler Lake Dip	44° 48.479'	-122° 8.919'
Dip Site	Opal Lake Dip	44° 47.594'	-122° 13.192'
Dip Site	Santiam Dip	44° 46.845'	-122° 39.389'
Dip Site	Silver Dip	44° 58.924'	-122° 44.43'
Dip Site	Tumble Lake Dip	44° 44.848'	-122° 13.581'
Helibase	Davis Strip	44° 44.76'	-122° 25.281'
Helibase	Howell Prairie	44° 53.67'	-122° 52.201'
Helispot	H-1	44° 47.235' N	-122° 39.843'
Incident Command Post	Chemeketa CC	44° 58.605'	-122° 58.675'
Lookout		44° 47.704'	-122° 12.503'
Water Development or Draft Site		44° 41.981'	-122° 28.889'
Water Source		44° 45.233'	-122° 30.834'
Water Source		44° 45.117'	-122° 28.168'
Water Source		44° 53.05'	-122° 37.213'
Water Source		44° 52.237'	-122° 39.15'
Water Source		44° 59.591'	-122° 37.235'
Water Source		45° 0.268'	-122° 35.606'
Water Source		44° 45.094'	-122° 26.463'
Water Source		44° 44.305'	-122° 24.999'
Water Source		44° 43.272'	-122° 27.446'
Water Source		44° 40.563'	-122° 19.889'
Water Source		44° 42.829'	-122° 27.823'
Water Source		44° 42.835'	-122° 24.838'
Water Source		45° 1.482'	-122° 31.664'
Water Source		45° 2.069'	-122° 33.461'
Water Source		44° 59.267'	-122° 25.276'
Water Source		44° 56.383'	-122° 33.055'
Water Source		44° 40.558'	-122° 16.879'

0 1 2 3 4 5
Miles

1:290,000 - SW IMT 2 - JTH -
09/18/2020 1848

