










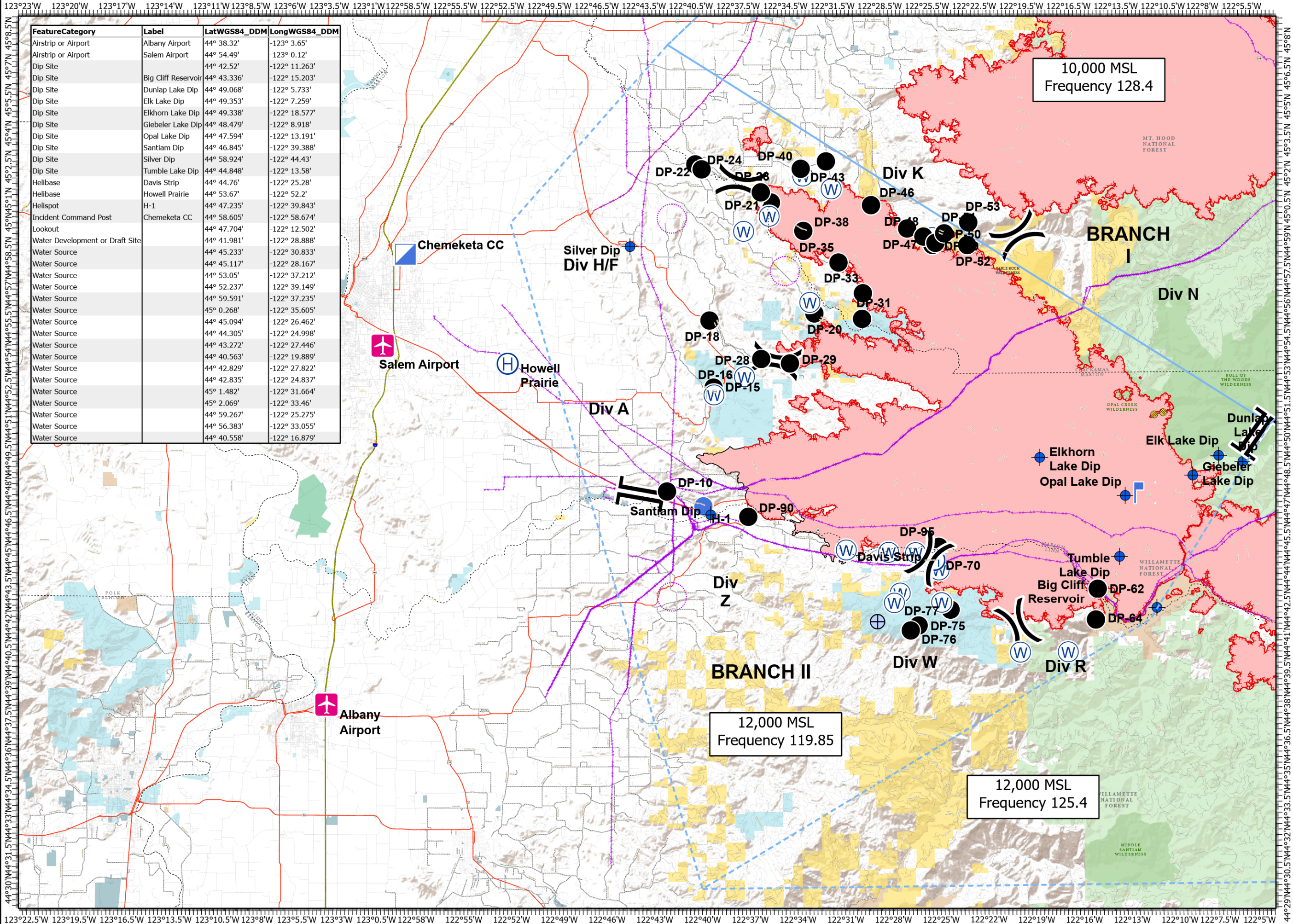
# Pilot Map

Beachie Creek  
ORWIF-200299  
9/19/20

192,531 acres at 09/18/20 @ 1942

-  Airstrip or Airport
-  Dip Site
-  Drop Point
-  Heliport
-  Heli-spot
-  Incident Command Post
-  Lookout
-  Water Source
-  Water Development or Draft Site

FeatureCategory	Label	LatWGS84_DDM	LongWGS84_DDM
Airstrip or Airport	Albany Airport	44° 38.32'	-123° 3.65'
Airstrip or Airport	Salem Airport	44° 54.49'	-123° 0.12'
Dip Site	Dip Site	44° 42.52'	-122° 11.263'
Dip Site	Big Cliff Reservoir	44° 43.336'	-122° 15.203'
Dip Site	Dunlap Lake Dip	44° 49.068'	-122° 5.733'
Dip Site	Elk Lake Dip	44° 49.353'	-122° 7.259'
Dip Site	Elkhorn Lake Dip	44° 49.338'	-122° 18.577'
Dip Site	Giebeler Lake Dip	44° 48.479'	-122° 8.918'
Dip Site	Opal Lake Dip	44° 47.594'	-122° 13.191'
Dip Site	Santiam Dip	44° 46.845'	-122° 39.388'
Dip Site	Silver Dip	44° 58.924'	-122° 44.43'
Dip Site	Tumble Lake Dip	44° 44.848'	-122° 13.58'
Heli-base	Davis Strip	44° 44.76'	-122° 25.28'
Heli-base	Howell Prairie	44° 53.67'	-122° 52.2'
Heli-spot	H-1	44° 47.235'	-122° 39.843'
Incident Command Post	Chemeketa CC	44° 58.605'	-122° 58.674'
Lookout	Lookout	44° 47.704'	-122° 12.502'
Water Development or Draft Site	Water Development or Draft Site	44° 41.981'	-122° 28.888'
Water Source	Water Source	44° 45.233'	-122° 30.833'
Water Source	Water Source	44° 45.117'	-122° 28.167'
Water Source	Water Source	44° 53.05'	-122° 37.212'
Water Source	Water Source	44° 52.237'	-122° 39.149'
Water Source	Water Source	44° 59.591'	-122° 37.235'
Water Source	Water Source	45° 0.268'	-122° 35.605'
Water Source	Water Source	44° 45.094'	-122° 26.462'
Water Source	Water Source	44° 44.305'	-122° 24.998'
Water Source	Water Source	44° 43.272'	-122° 27.446'
Water Source	Water Source	44° 40.563'	-122° 19.889'
Water Source	Water Source	44° 42.829'	-122° 27.822'
Water Source	Water Source	44° 42.835'	-122° 24.837'
Water Source	Water Source	45° 1.482'	-122° 31.664'
Water Source	Water Source	45° 2.069'	-122° 33.46'
Water Source	Water Source	44° 59.267'	-122° 25.275'
Water Source	Water Source	44° 56.383'	-122° 33.055'
Water Source	Water Source	44° 40.558'	-122° 16.879'



10,000 MSL  
Frequency 128.4

12,000 MSL  
Frequency 119.85

12,000 MSL  
Frequency 125.4



0 1 2 3 4 5  
Miles

1:290,000 - SW IMT 2 - JTH -  
09/18/2020 2310

