

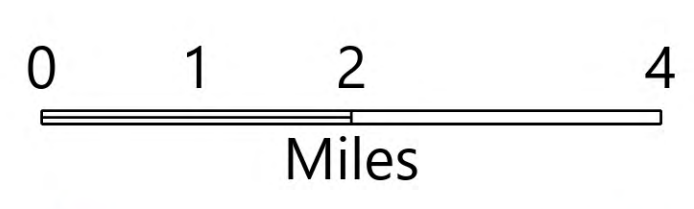
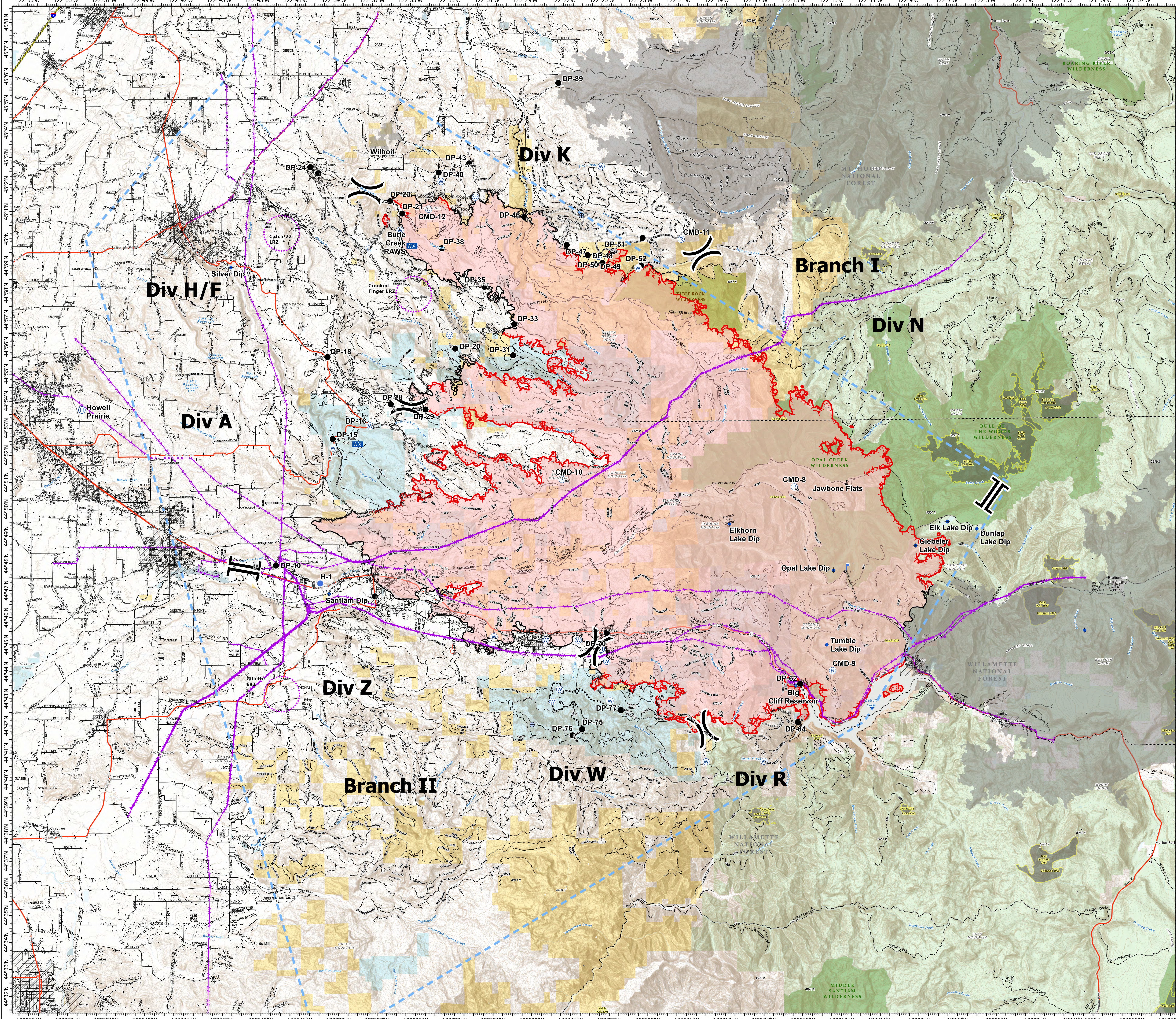
Operations

Beachie Creek
ORWIF-200299

9/20/20

192,713 acres at 09/19/20 @ 2309

- County Boundary
- Dip Site
- Drop Point
- Helibase
- Helispot
- Lookout
- Mobile Weather Unit
- Repeater
- Resource Location
- Spot Fire
- Water Source
- Water Development or Draft Site
- Value at Risk
- Division Break
- Branch Break
- Uncontrolled Fire Edge
- Contained Line
- Completed Dozer Line
- Completed Hand Line
- Road as Completed Line
- Access or Improved Road
- Proposed Dozer Line
- Fire Break Planned or Incomplete
- Planned Fire Line
- Planned Secondary Line
- Aerial Hazard
- Temporary Flight Restriction
- UAS Launch and Recovery Zone
- Other
- Wildfire Daily Fire Perimeter
- City Limits
- County Structures
- Historic Fire Perimeters
- Ranger District Boundaries
- Bureau of Land Management
- U.S. Forest Service
- Other Federal
- State
- Local Government
- Private/Unknown
- Other - Wildfire Fire Perimeter
- Wilderness
- Interstate Highway
- US Highway
- State Highway
- Roads



178,595 - SW/IMT 2 - CH - 9/20/2020 0804
Acres from GIS
North American 1983 Datum, LatLong Grid