

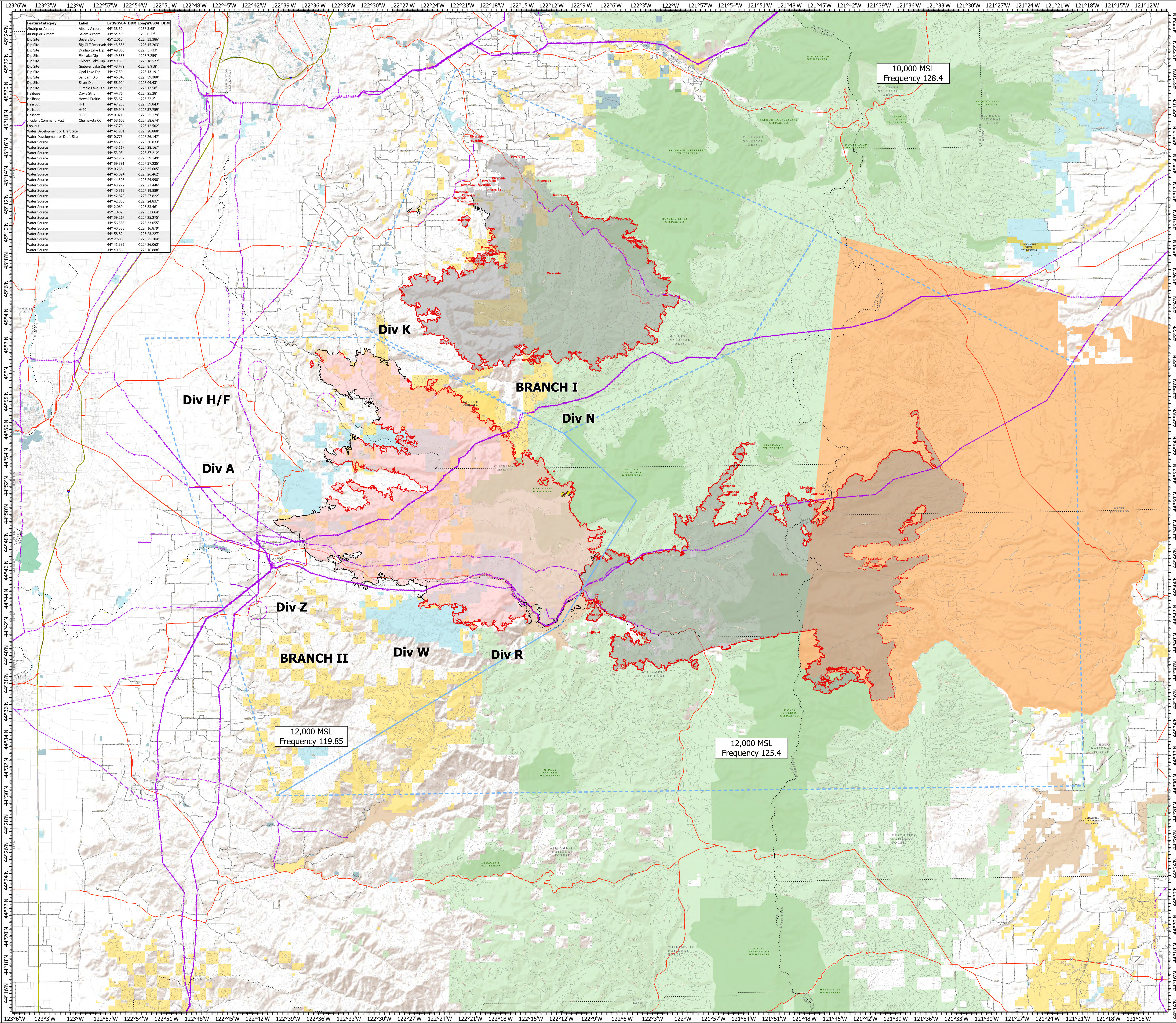
Air Ops

Beachie Creek
ORWIF-200299

9/21/20

192,764 acres at 09/20/20 @ 2337

-  Mine Waste Aerial Avoidance
-  Uncontrolled Fire Edge
-  Contained Line
-  Aerial Hazard
-  Temporary Flight Restriction
-  UAS Launch and Recovery Zone
-  Wildfire Daily Fire Perimeter
-  IR Heat Perimeter
-  Other Fire Perimeters
-  Bureau of Land Management
-  U.S. Forest Service
-  U.S. Fish and Wildlife Service
-  Bureau of Indian Affairs
-  Other Federal
-  State
-  Local Government
-  Private/Unknown
-  US Wilderness
-  BLM Wilderness Areas (REST Service)



Feature/Category	Label	LatWGS84	DDM	LongWGS84	DDM
Airport or Airport	Albany Airport	44° 38.23'	-122° 3.65'		
Airport or Airport	Salem Airport	44° 54.49'	-122° 0.12'		
Dip Site	Beyers Dip	45° 2.018'	-122° 33.386'		
Dip Site	Dip Cliff Reservoir	44° 43.338'	-122° 15.203'		
Dip Site	Durlap Lake Dip	44° 49.068'	-122° 5.733'		
Dip Site	Elk Lake Dip	44° 49.353'	-122° 7.259'		
Dip Site	Elkhorn Lake Dip	44° 49.338'	-122° 18.577'		
Dip Site	Goshute Lake Dip	44° 48.470'	-122° 9.818'		
Dip Site	Opal Lake Dip	44° 47.594'	-122° 13.191'		
Dip Site	Santiam Dip	44° 46.845'	-122° 39.388'		
Dip Site	Silver Dip	44° 58.924'	-122° 44.31'		
Dip Site	Tumble Lake Dip	44° 44.848'	-122° 13.58'		
Heli-base	Davis Strip	44° 44.76'	-122° 25.28'		
Heli-base	Hovell Prairie	44° 52.67'	-122° 5.2'		
Helipod	H-1	44° 47.235'	-122° 39.843'		
Helipod	H-20	44° 59.948'	-122° 37.759'		
Helipod	H-30	45° 0.071'	-122° 26.799'		
Incident Command Post	Chemeketa CC	44° 58.605'	-122° 58.674'		
Lookout		44° 47.704'	-122° 12.502'		
Water Development or Draft Site		44° 41.981'	-122° 28.888'		
Water Development or Draft Site		45° 0.772'	-122° 26.447'		
Water Source		44° 45.233'	-122° 30.833'		
Water Source		44° 45.117'	-122° 28.167'		
Water Source		44° 53.05'	-122° 37.212'		
Water Source		44° 52.237'	-122° 39.149'		
Water Source		44° 59.591'	-122° 37.235'		
Water Source		45° 0.268'	-122° 35.665'		
Water Source		44° 45.094'	-122° 26.462'		
Water Source		44° 44.305'	-122° 24.998'		
Water Source		44° 43.272'	-122° 27.448'		
Water Source		44° 40.563'	-122° 19.889'		
Water Source		44° 42.829'	-122° 27.822'		
Water Source		44° 42.835'	-122° 24.837'		
Water Source		45° 0.069'	-122° 33.46'		
Water Source		45° 1.482'	-122° 31.664'		
Water Source		44° 59.267'	-122° 25.275'		
Water Source		44° 56.383'	-122° 33.655'		
Water Source		44° 40.558'	-122° 16.879'		
Water Source		44° 58.824'	-122° 23.227'		
Water Source		45° 2.883'	-122° 25.104'		
Water Source		44° 41.386'	-122° 26.063'		
Water Source		44° 40.56'	-122° 16.888'		

0 1 2
Miles

