









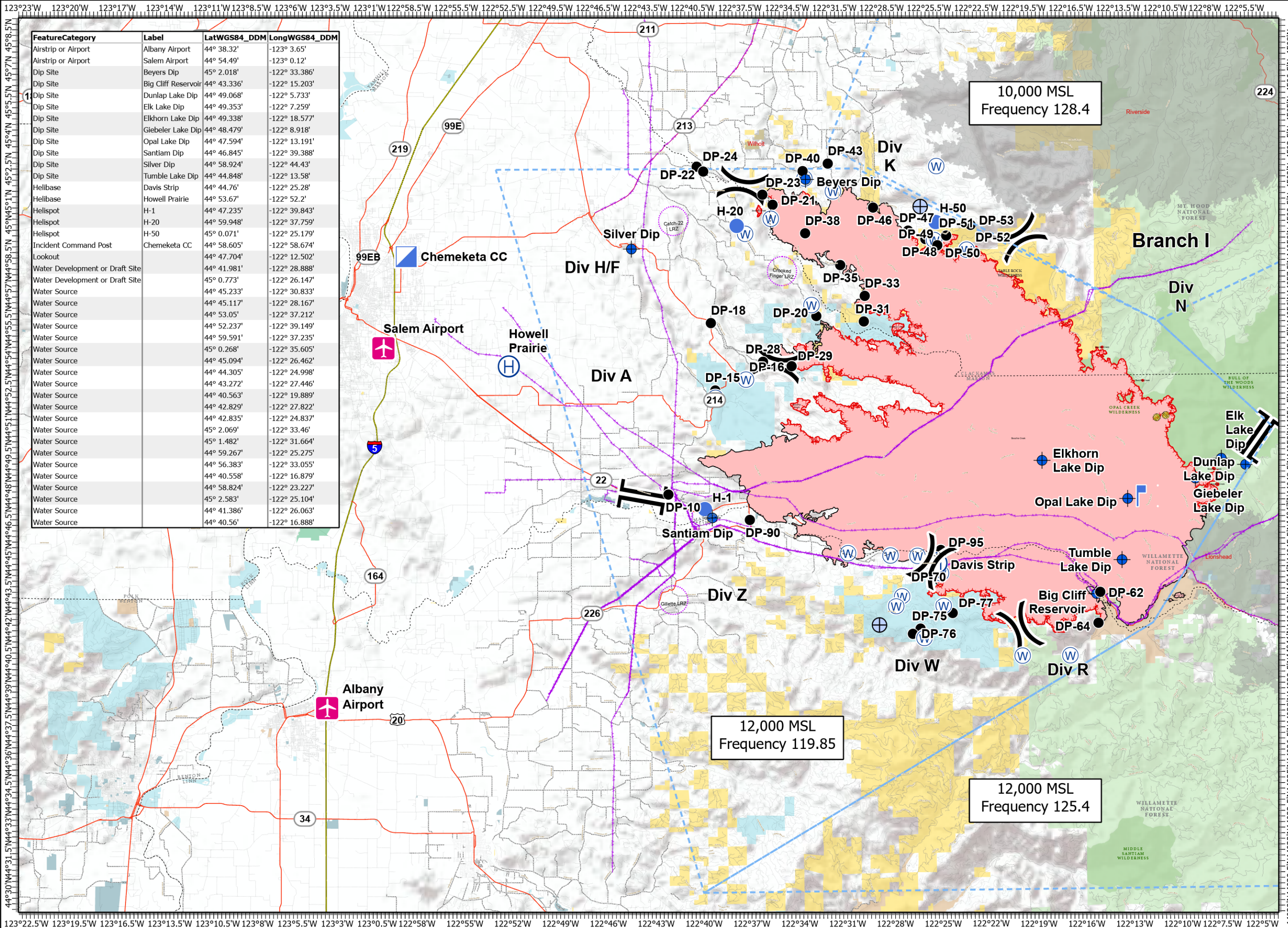
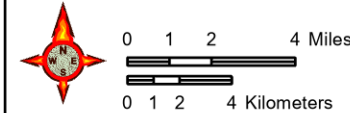
Pilot

Beachie Creek
ORWIF-200299

9/21/20

192,764 acres
78,009 hectares
as of 09/20/20 @ 2337

-  Airstrip or Airport
-  Dip Site
-  Drop Point
-  Helibase
-  Helispot
-  Incident Command Post
-  Lookout
-  Water Source
-  Water Development or Draft Site
-  Division Break
-  Branch Break
-  BPA Transmission Lines
-  Mine Waste Aerial Avoidance



| FeatureCategory | Label | LatWGS84_DDM | LongWGS84_DDM |
|---------------------------------|---------------------|--------------|---------------|
| Airstrip or Airport | Albany Airport | 44° 38.32' | -123° 3.65' |
| Airstrip or Airport | Salem Airport | 44° 54.49' | -123° 0.12' |
| Dip Site | Beyers Dip | 45° 2.018' | -122° 33.386' |
| Dip Site | Big Cliff Reservoir | 44° 43.336' | -122° 15.203' |
| Dip Site | Dunlap Lake Dip | 44° 49.068' | -122° 5.733' |
| Dip Site | Elk Lake Dip | 44° 49.353' | -122° 7.259' |
| Dip Site | Elkhorn Lake Dip | 44° 49.338' | -122° 18.577' |
| Dip Site | Giebler Lake Dip | 44° 48.479' | -122° 8.918' |
| Dip Site | Opal Lake Dip | 44° 47.594' | -122° 13.191' |
| Dip Site | Santiam Dip | 44° 46.845' | -122° 39.388' |
| Dip Site | Silver Dip | 44° 58.924' | -122° 44.43' |
| Dip Site | Tumble Lake Dip | 44° 44.848' | -122° 13.58' |
| Helibase | Davis Strip | 44° 44.76' | -122° 25.28' |
| Helibase | Howell Prairie | 44° 53.67' | -122° 52.2' |
| Helispot | H-1 | 44° 47.235' | -122° 39.843' |
| Helispot | H-20 | 44° 59.948' | -122° 37.759' |
| Helispot | H-50 | 45° 0.071' | -122° 25.179' |
| Incident Command Post | Chemeketa CC | 44° 58.605' | -122° 58.674' |
| Lookout | | 44° 47.704' | -122° 12.502' |
| Water Development or Draft Site | | 44° 41.981' | -122° 28.888' |
| Water Development or Draft Site | | 45° 0.773' | -122° 26.147' |
| Water Source | | 44° 45.233' | -122° 30.833' |
| Water Source | | 44° 45.117' | -122° 28.167' |
| Water Source | | 44° 53.05' | -122° 37.212' |
| Water Source | | 44° 52.237' | -122° 39.149' |
| Water Source | | 44° 59.591' | -122° 37.235' |
| Water Source | | 45° 0.268' | -122° 35.605' |
| Water Source | | 44° 45.094' | -122° 26.462' |
| Water Source | | 44° 44.305' | -122° 24.998' |
| Water Source | | 44° 43.272' | -122° 27.446' |
| Water Source | | 44° 40.563' | -122° 19.889' |
| Water Source | | 44° 42.829' | -122° 27.822' |
| Water Source | | 44° 42.835' | -122° 24.837' |
| Water Source | | 45° 2.069' | -122° 33.46' |
| Water Source | | 45° 1.482' | -122° 31.664' |
| Water Source | | 44° 59.267' | -122° 25.275' |
| Water Source | | 44° 56.383' | -122° 33.055' |
| Water Source | | 44° 40.558' | -122° 16.879' |
| Water Source | | 44° 58.824' | -122° 23.227' |
| Water Source | | 45° 2.583' | -122° 25.104' |
| Water Source | | 44° 41.386' | -122° 26.063' |
| Water Source | | 44° 40.56' | -122° 16.888' |

10,000 MSL
Frequency 128.4

12,000 MSL
Frequency 119.85

12,000 MSL
Frequency 125.4