

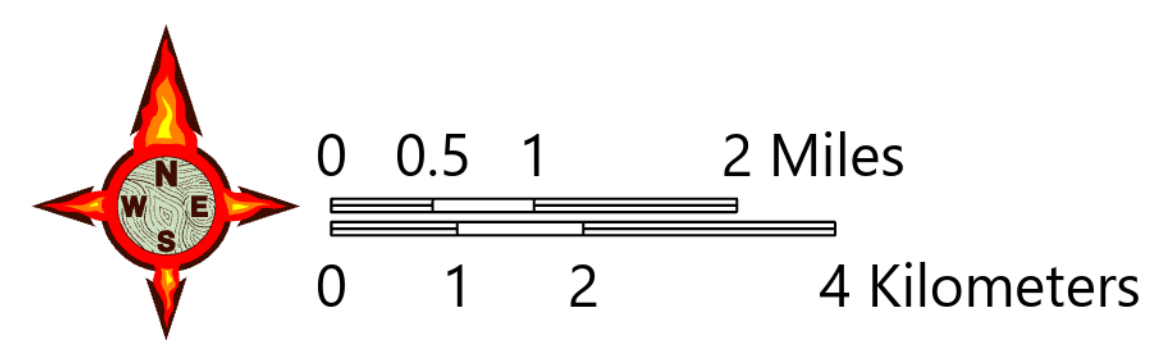
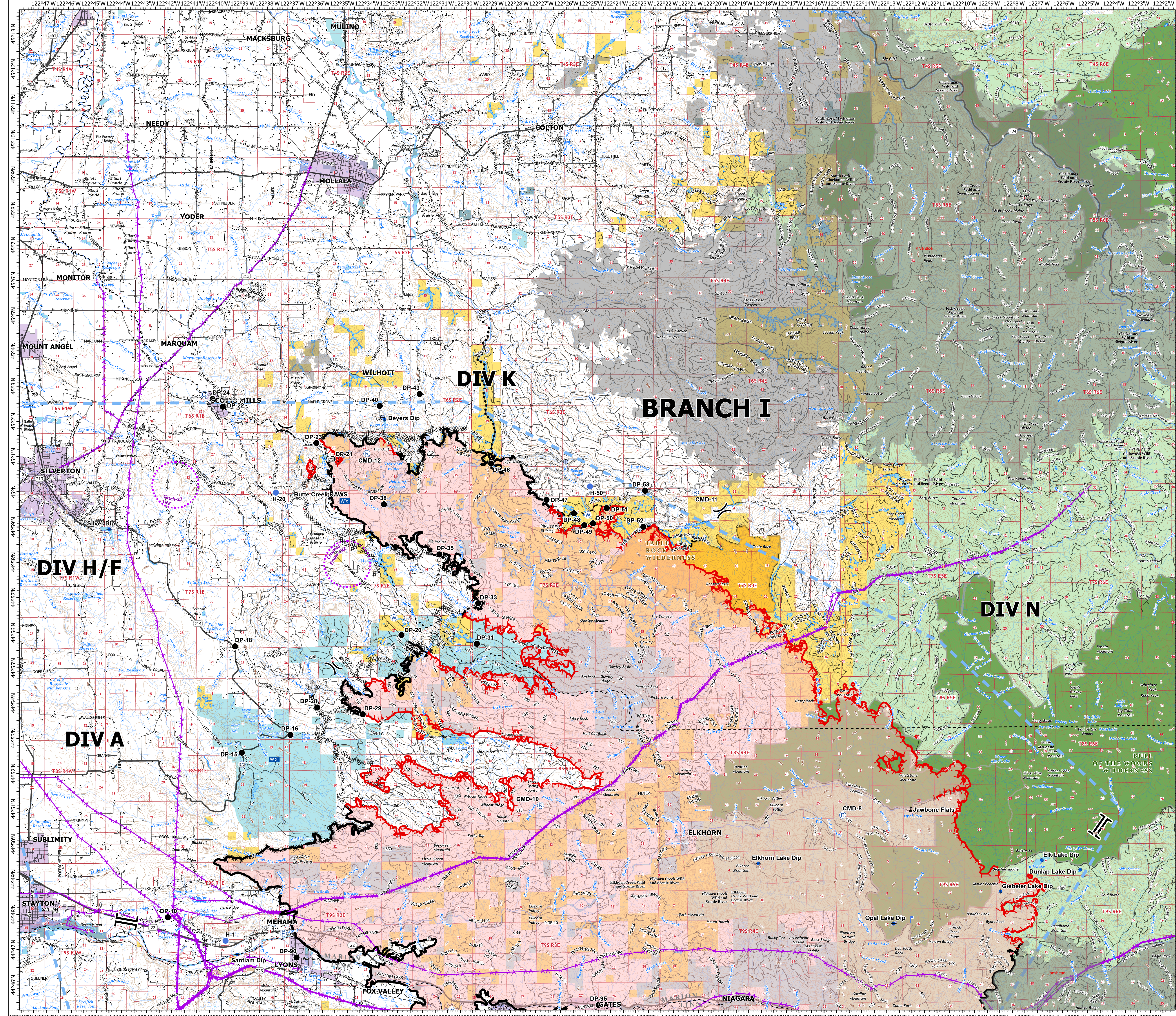
OPS Branch I

Beachie Creek
ORWIF-200299

9/22/20

192,775 acres | 78,013 hectares
at 09/21/20 @ 1800

- Bridge
- Camp
- Closure
- Dip Site
- Drop Point
- Fire Station
- Gate
- Helispot
- Internet Access
- Lookout
- Mobile Weather Unit
- Repeater
- Water Source
- Water Development or Draft Site
- Value at Risk
- Division Break
- Branch Break
- Contained Line
- Completed Dozer Line
- Completed Hand Line
- Road as Completed Line
- Access or Improved Road
- Planned Fire Line
- Planned Secondary Line
- Aerial Hazard
- Temporary Flight Restriction
- UAS Launch and Recovery Zone
- Uncontrolled Fire Edge
- Wildfire Daily Fire Perimeter
- Other Daily Wildfire Perimeter
- County Boundary
- Roads
- Highway, Freeway
- Structures
- City Limits
- Twn Rng
- Section
- FS Wilderness
- BLM Wilderness
- Bureau of Land Management
- U.S. Forest Service
- Other Federal
- State
- Local Government
- Private/Unknown



1:60,000 - SW IMT 2 - 9/21/2020 2011
Acres from GIS
North American 1983 Datum, LatLong Grid