

Air Ops

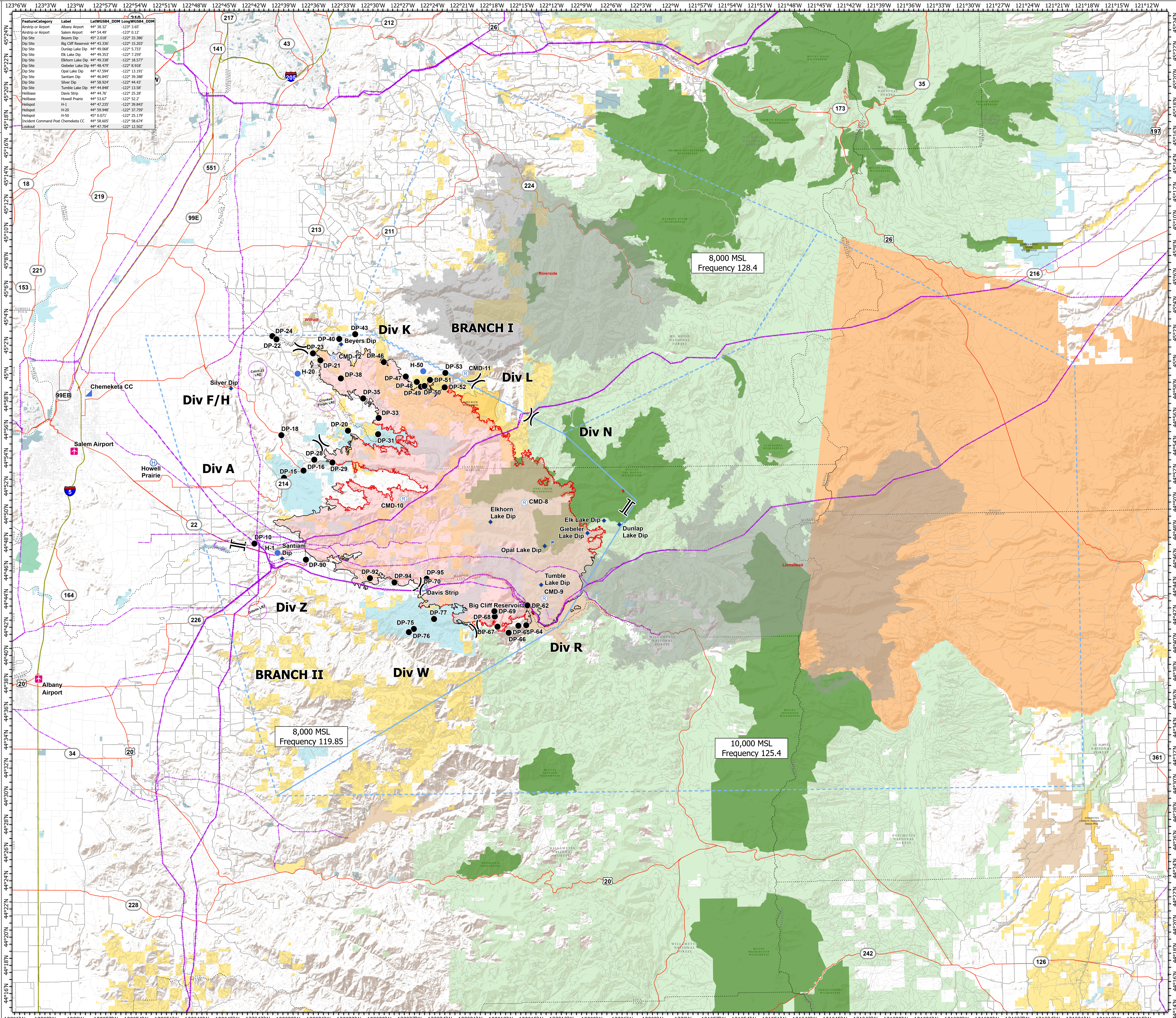
Beachie Creek
ORWIF-200299

9/24/20

192,838 acres

78,039 hectares

as of 09/23/20 @ 1810



Feature/Category	Label	Lat/Long (NAD 83)	Lat/Long (WGS84, UTM)
Airstrip or Airport	Albany Airport	44° 36.32'	-122° 3.62'
Airstrip or Airport	Salem Airport	44° 54.49'	-122° 0.12'
Dip Site	Beyers Dip	45° 2.018'	-122° 33.386'
Dip Site	Big Cliff Reservoir	44° 43.356'	-122° 15.202'
Dip Site	Dunlap Lake Dip	44° 49.068'	-122° 5.733'
Dip Site	Elk Lake Dip	44° 49.353'	-122° 7.259'
Dip Site	Elkhorn Lake Dip	44° 49.238'	-122° 18.777'
Dip Site	Giebelser Lake Dip	44° 46.479'	-122° 8.918'
Dip Site	Opal Lake Dip	44° 47.594'	-122° 13.191'
Dip Site	Santiam Dip	44° 46.845'	-122° 39.388'
Dip Site	Silver Dip	44° 58.924'	-122° 44.42'
Dip Site	Tumble Lake Dip	44° 44.848'	-122° 13.58'
Helibase	Davis Strip	44° 44.76'	-122° 25.26'
Helibase	Howell Prairie	44° 53.67'	-122° 52.2'
Helispot	H-1	44° 47.235'	-122° 39.843'
Helispot	H-20	44° 59.948'	-122° 37.759'
Helispot	H-50	45° 0.071'	-122° 25.179'
Incident Command Post	Chemeketa CC	44° 58.895'	-122° 58.674'
Lookout		44° 47.704'	-122° 12.502'

- Mine Waste Aerial Avoidance
- County Boundary
- Airstrip or Airport
- Dip Site
- Drop Point
- Helibase
- Helispot
- Incident Command Post
- Lookout
- Repeater
- Division Break
- Branch Break
- Uncontrolled Fire Edge
- Contained Line
- Aerial Hazard
- Temporary Flight Restriction
- UAS Launch and Recovery Zone
- BPA_TransmissionLines
- Wildfire Daily Fire Perimeter
- Other Fire Perimeters
- Interstate Highway
- US Highway
- State Highway
- County Road
- BLM Road
- Federal Road
- Municipal Road
- Private Road
- Other Road
- Bureau of Land Management
- U.S. Forest Service
- U.S. Fish and Wildlife Service
- Bureau of Indian Affairs
- Other Federal
- State
- Local Government
- Private/Unknown
- US Wilderness
- BLM Wilderness Areas

