

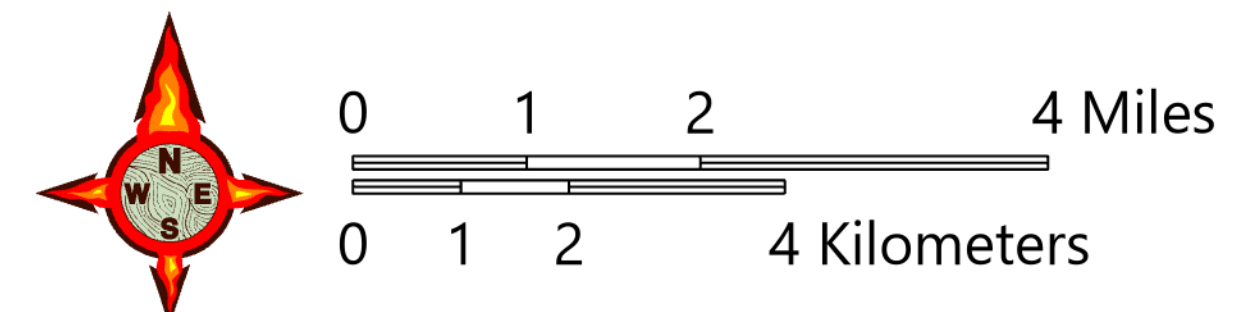
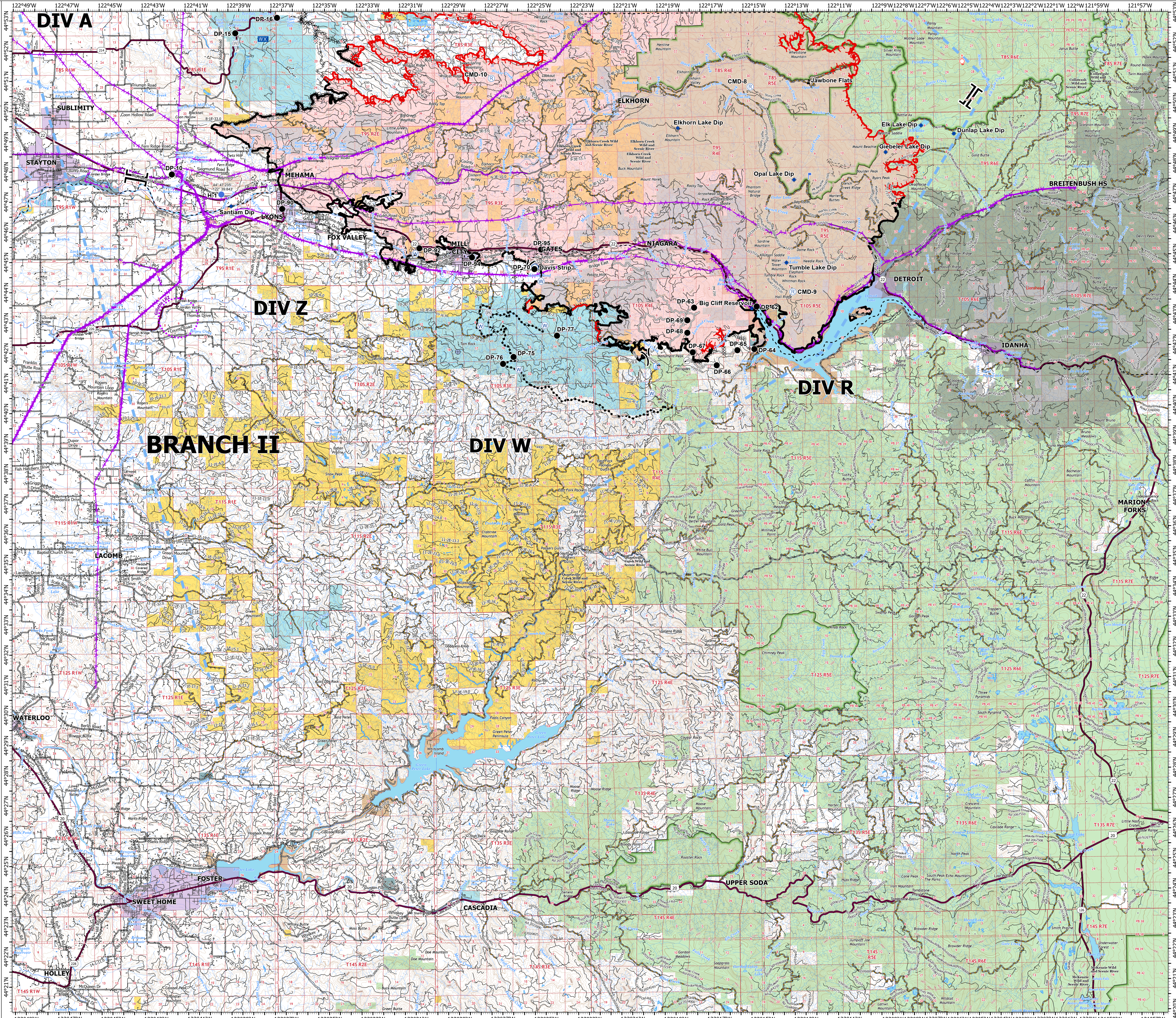
OPS Branch II

Beachie Creek
ORWIF-200299

9/25/20

192,838 acres | 78,039 hectares
at 09/23/20 @ 1810

- ◆ Bridge
- ◆ Dip Site
- ◆ Drop Point
- Fire Station
- Helibase
- Helispot
- Internet Access
- Lookout
- Mobile Weather Unit
- Repeater
- Resource Location
- Spot Fire
- Stream Crossing
- Water Source
- Water Development or Draft Site
- ⚡ Value at Risk
- ⊗ Division Break
- ⊗ Branch Break
- Contained Line
- ⊗ Completed Dozer Line
- ⊗ Completed Hand Line
- ⊗ Road as Completed Line
- Access or Improved Road
- ⊗ Proposed Dozer Line
- Planned Fire Line
- ⊗ Planned Secondary Line
- ⊗ Aerial Hazard
- ⊗ Temporary Flight Restriction
- ⊗ UAS Launch and Recovery Zone
- ⊗ Uncontrolled Fire Edge
- ⊗ Wildfire Daily Fire Perimeter
- ⊗ Other Daily Wildfire Perimeter
- ⊗ County Boundary
- ⊗ Structures
- ⊗ City Limits
- ⊗ Twn Rng
- ⊗ Section Protected
- ⊗ Section
- ⊗ FS Wilderness
- ⊗ Bureau of Land Management
- ⊗ U.S. Forest Service
- ⊗ Other Federal
- ⊗ State
- ⊗ Local Government
- ⊗ Private/Unknown
- US Highway
- State Highway
- County Road
- Major road
- Intermediate road
- Minor road
- Decommissioned or Closed



1:70,000 - SW IMT 2 - 9/24/2020 2038
Acres from GIS
North American 1983 Datum, LatLong Grid