

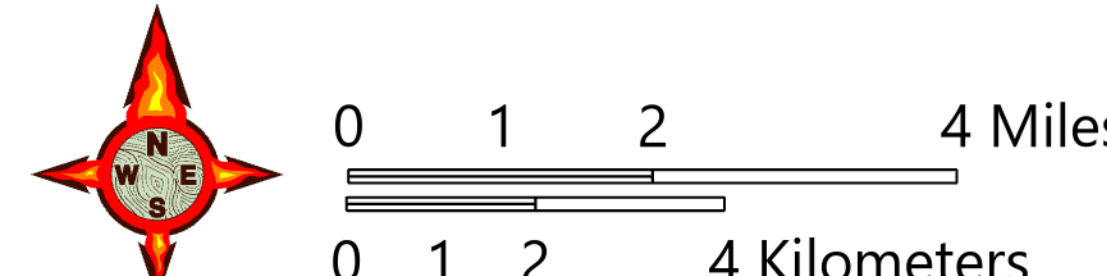
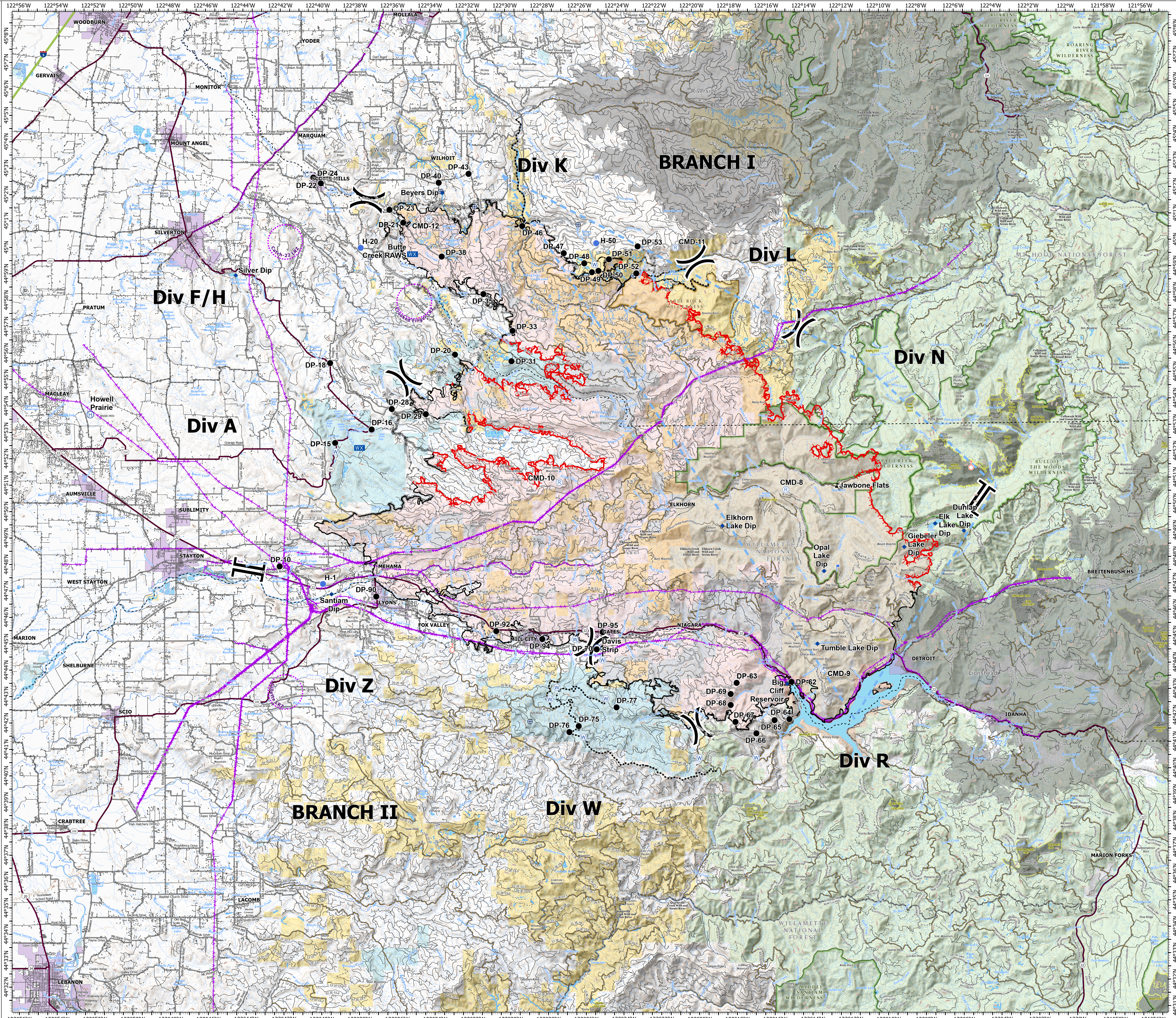
# Operations

Beachie Creek  
ORWIF-200299

9/27/20

192,838 acres | 78,039 hectares  
as of 09/23/20 @ 1810

- Camp
- Dip Site
- Drop Point
- Helibase
- Helispot
- Hot Spot
- Lookout
- Mobile Weather Unit
- Repeater
- Resource Location
- Spot Fire
- Water Source
- Water Development or Draft Site
- ⋮ Value at Risk
- ⋮ Division Break
- ⋮ Branch Break
- Uncontrolled Fire Edge
- Contained Line
- Completed Dozer Line
- Completed Hand Line
- Road as Completed Line
- Access or Improved Road
- Proposed Dozer Line
- Planned Fire Line
- Planned Secondary Line
- Aerial Hazard
- Temporary Flight Restriction
- UAS Launch and Recovery Zone
- Wildfire Daily Fire Perimeter
- Other - Wildfire Fire Perimeter
- Historic Fire Perimeters
- Ranger District Boundaries
- County Boundary
- City Limits
- Structures
- FS Wilderness
- BLM Wilderness
- Bureau of Land Management
- U.S. Forest Service
- Other Federal
- State
- Local Government
- Private/Unknown
- Interstate
- US Highway
- State Highway
- County Road
- Major road
- Intermediate road
- Minor road
- Decommissioned or Closed



1:80,000 - SWAMIT2 - 9/26/2020 1930  
Acres from GIS  
North American 1983 Datum, LatLong Grid