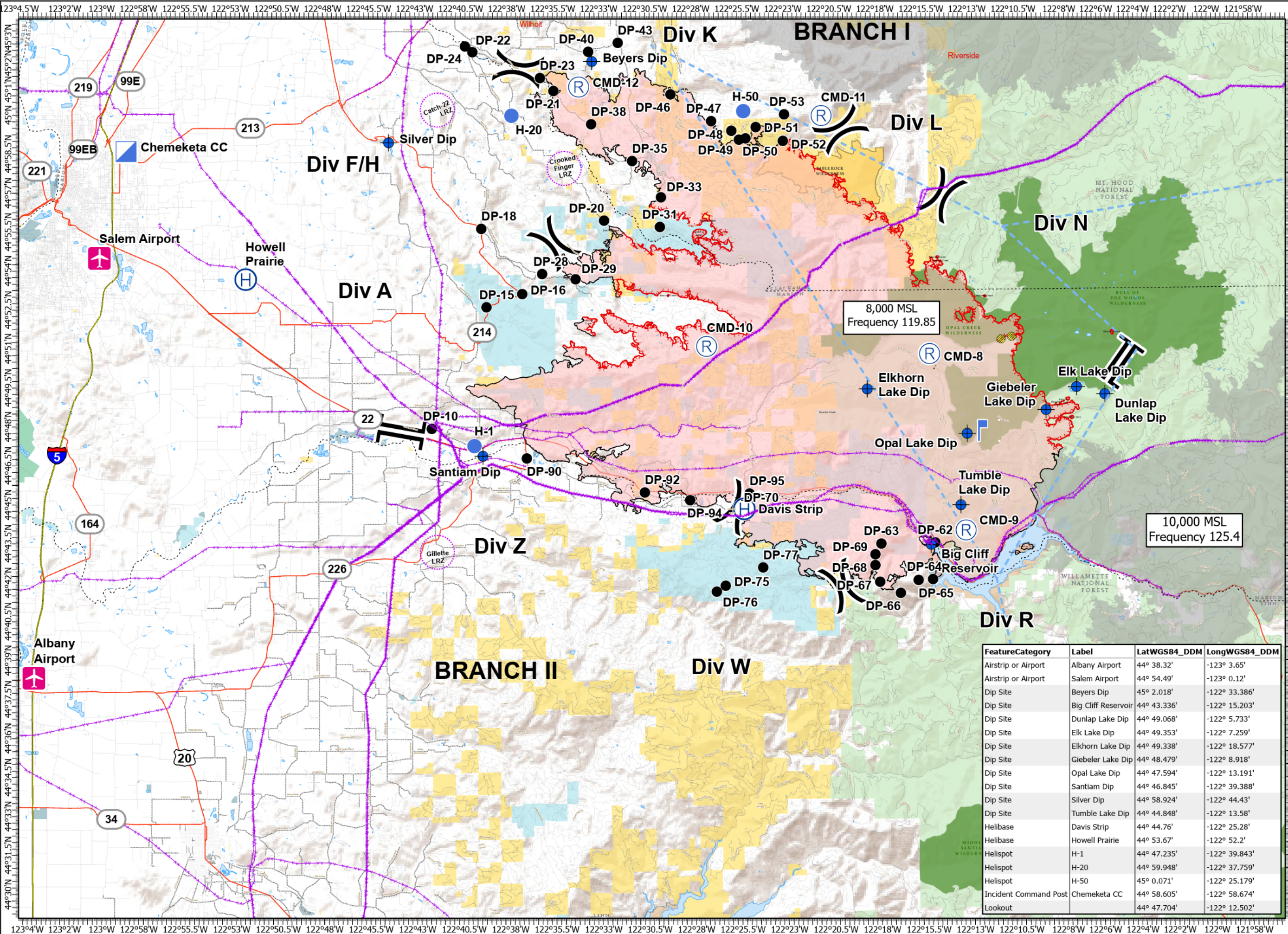


# Pilot

Beachie Creek  
ORWIF-200299  
9/27/20  
192,838 acres  
78,039 hectares  
as of 09/23/20 @ 1810

- Airstrip or Airport
- Dip Site
- Drop Point
- Helibase
- Helispot
- Incident Command Post
- Lookout
- Repeater
- Division Break
- Branch Break
- Aerial Hazard
- Temporary Flight Restriction
- Mine Waste Aerial Avoidance



8,000 MSL  
Frequency 119.85

10,000 MSL  
Frequency 125.4

FeatureCategory	Label	LatWGS84_DDM	LongWGS84_DDM
Airstrip or Airport	Albany Airport	44° 38.32'	-123° 3.65'
Airstrip or Airport	Salem Airport	44° 54.49'	-123° 0.12'
Dip Site	Beyers Dip	45° 2.018'	-122° 33.386'
Dip Site	Big Cliff Reservoir	44° 43.336'	-122° 15.203'
Dip Site	Dunlap Lake Dip	44° 49.068'	-122° 5.733'
Dip Site	Elk Lake Dip	44° 49.353'	-122° 7.259'
Dip Site	Elkhorn Lake Dip	44° 49.338'	-122° 18.577'
Dip Site	Giebeler Lake Dip	44° 48.479'	-122° 8.918'
Dip Site	Opal Lake Dip	44° 47.594'	-122° 13.191'
Dip Site	Santiam Dip	44° 46.845'	-122° 39.388'
Dip Site	Silver Dip	44° 58.924'	-122° 44.43'
Dip Site	Tumble Lake Dip	44° 44.848'	-122° 13.58'
Helibase	Davis Strip	44° 44.76'	-122° 25.28'
Helibase	Howell Prairie	44° 53.67'	-122° 52.2'
Helispot	H-1	44° 47.235'	-122° 39.843'
Helispot	H-20	44° 59.948'	-122° 37.759'
Helispot	H-50	45° 0.071'	-122° 25.179'
Incident Command Post	Chemeketa CC	44° 58.605'	-122° 58.674'
Lookout		44° 47.704'	-122° 12.502'

