

# Air Ops

Beachie Creek  
ORWIF-200299

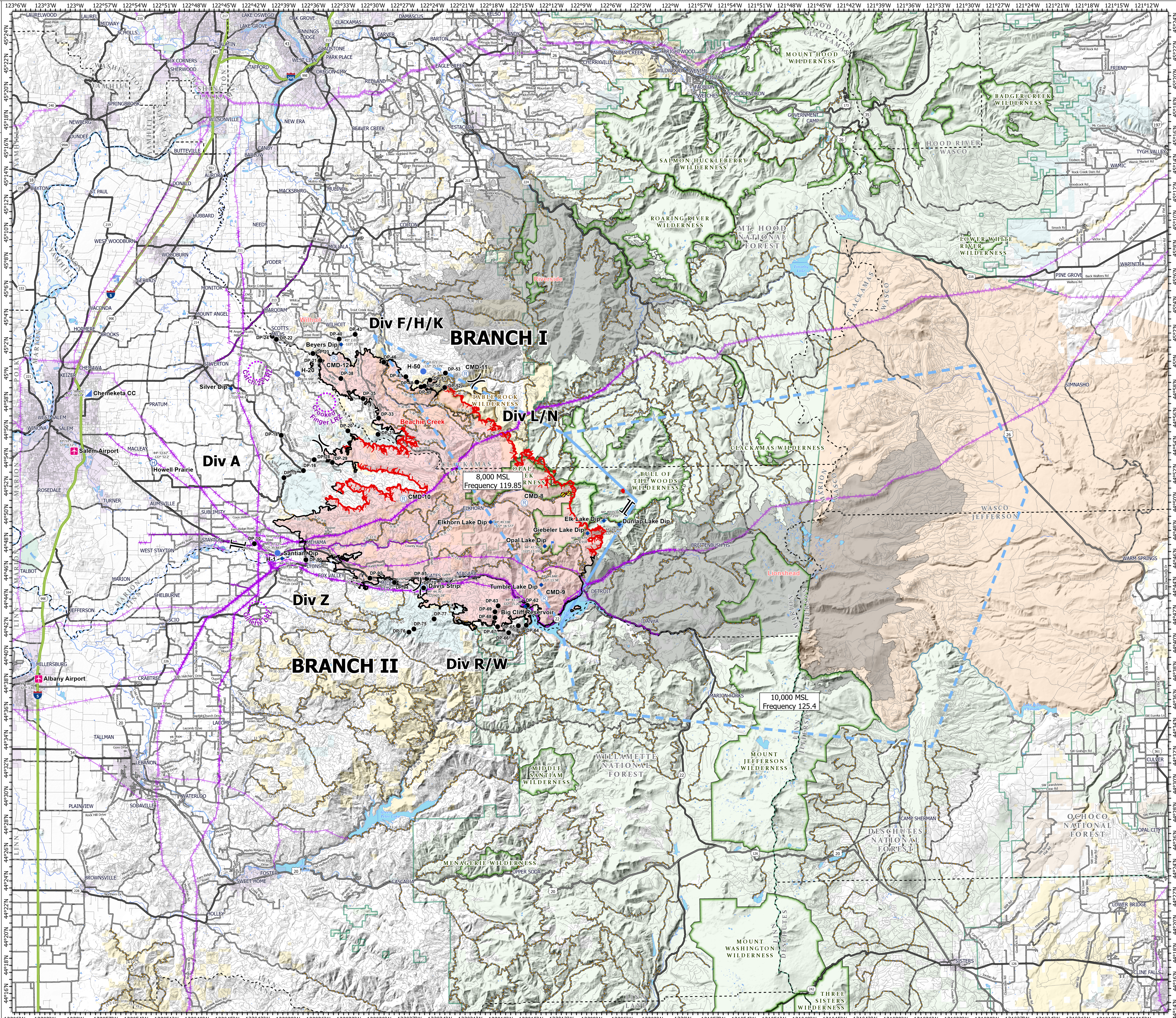
9/28/20

192,838 acres

78,039 hectares  
as of 09/23/20 @ 1810

- Mine Waste Aerial Avoidance
- Airstrip or Airport
- Dip Site
- Drop Point
- Helibase
- Helispot
- Incident Command Post
- Lookout
- Repeater
- X Division Break
- || Branch Break
- Uncontrolled Fire Edge
- Contained Line
- Aerial Hazard
- Temporary Flight Restriction
- UAS Launch and Recovery Zone
- Wildfire Daily Fire Perimeter
- Other Fire Perimeters
- County Boundary
- FS Wilderness
- BLM Wilderness
- USDA-FS Forests
- City Limits
- Bureau of Land Management
- U.S. Forest Service
- U.S. Fish and Wildlife Service
- Bureau of Indian Affairs
- Other Federal
- State
- Local Government
- Private/Unknown
- Interstate
- US Highway
- State Highway
- County Road
- Major road
- Intermediate road
- Minor road

FeatureCategory	Label	LatWGS84	DDM	LongWGS84	DDM
Airstrip or Airport	Albany Airport	44° 38.32'		-123° 3.65'	
Airstrip or Airport	Salem Airport	44° 54.49'		-123° 0.12'	
Dip Site	Beyers Dip	45° 2.018'		-122° 33.386'	
Dip Site	Big Cliff Reservoir	44° 43.336'		-122° 15.203'	
Dip Site	Dunlap Lake Dip	44° 49.068'		-122° 5.733'	
Dip Site	Elk Lake Dip	44° 49.353'		-122° 7.259'	
Dip Site	Elkhorn Lake Dip	44° 49.338'		-122° 18.577'	
Dip Site	Giebler Lake Dip	44° 48.479'		-122° 8.918'	
Dip Site	Opal Lake Dip	44° 47.594'		-122° 13.191'	
Dip Site	Santiam Dip	44° 46.845'		-122° 39.388'	
Dip Site	Silver Dip	44° 58.924'		-122° 44.433'	
Dip Site	Tumble Lake Dip	44° 44.848'		-122° 13.58'	
Drop Point	DP-10	44° 47.905'		-122° 42.141'	
Drop Point	DP-15	44° 52.572'		-122° 39.164'	
Drop Point	DP-16	44° 53.073'		-122° 37.216'	
Drop Point	DP-18	44° 55.594'		-122° 39.415'	
Drop Point	DP-20	44° 55.89'		-122° 32.76'	
Drop Point	DP-21	45° 0.891'		-122° 35.479'	
Drop Point	DP-22	45° 2.399'		-122° 39.866'	
Drop Point	DP-23	45° 1.35'		-122° 36.123'	
Drop Point	DP-24	45° 2.621'		-122° 40.272'	
Drop Point	DP-28	44° 53.845'		-122° 36.14'	
Drop Point	DP-29	44° 53.645'		-122° 34.326'	
Drop Point	DP-31	44° 55.628'		-122° 29.748'	
Drop Point	DP-33	44° 56.778'		-122° 29.683'	
Drop Point	DP-35	44° 58.172'		-122° 31.223'	
Drop Point	DP-38	44° 59.602'		-122° 33.433'	
Drop Point	DP-40	45° 2.4'		-122° 33.577'	
Drop Point	DP-43	45° 2.73'		-122° 31.978'	
Drop Point	DP-46	44° 0.741'		-122° 29.129'	
Drop Point	DP-47	44° 59.687'		-122° 26.852'	
Drop Point	DP-48	44° 59.314'		-122° 25.832'	
Drop Point	DP-49	44° 58.938'		-122° 25.266'	
Drop Point	DP-50	44° 59.026'		-122° 25.072'	
Drop Point	DP-51	44° 59.456'		-122° 24.509'	
Drop Point	DP-52	44° 58.917'		-122° 23.051'	
Drop Point	DP-53	44° 59.938'		-122° 22.971'	
Drop Point	DP-62	44° 43.407'		-122° 14.978'	
Drop Point	DP-63	44° 43.388'		-122° 17.89'	
Drop Point	DP-64	44° 42.0'		-122° 15.108'	
Drop Point	DP-65	44° 41.967'		-122° 15.894'	
Drop Point	DP-66	44° 41.474'		-122° 16.865'	
Drop Point	DP-67	44° 41.911'		-122° 17.969'	
Drop Point	DP-68	44° 42.64'		-122° 18.227'	
Drop Point	DP-69	44° 43.007'		-122° 18.27'	
Drop Point	DP-70	44° 44.705'		-122° 25.305'	
Drop Point	DP-75	44° 41.801'		-122° 26.298'	
Drop Point	DP-76	44° 41.575'		-122° 26.792'	
Drop Point	DP-77	44° 42.496'		-122° 24.276'	
Drop Point	DP-90	44° 46.751'		-122° 37.015'	
Drop Point	DP-92	44° 45.417'		-122° 30.647'	
Drop Point	DP-94	44° 45.105'		-122° 28.203'	
Drop Point	DP-95	44° 45.351'		-122° 24.987'	
Helibase	Davis Strip	44° 44.76'		-122° 25.28'	
Helibase	Howell Prairie	44° 53.67'		-122° 52.2'	
Helispot	H-1	44° 47.235'		-122° 39.943'	
Helispot	H-20	44° 59.946'		-122° 37.759'	
Helispot	H-50	45° 0.071'		-122° 25.179'	
Incident Command Post	Chemeketa CC	44° 58.605'		-122° 58.674'	
Lookout		44° 47.704'		-122° 12.502'	



Div F/H/K  
**BRANCH I**

Div L/N

Div A

Div Z

**BRANCH II**

Div R/W

8,000 MSL  
Frequency 119.85

10,000 MSL  
Frequency 125.4

