

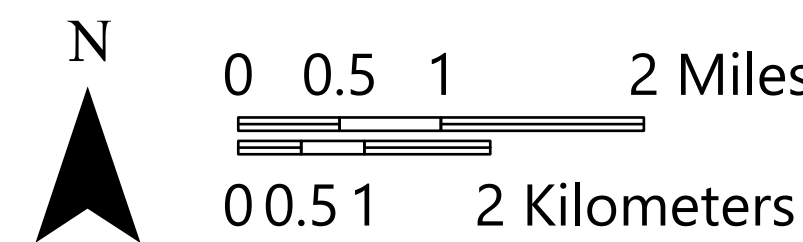
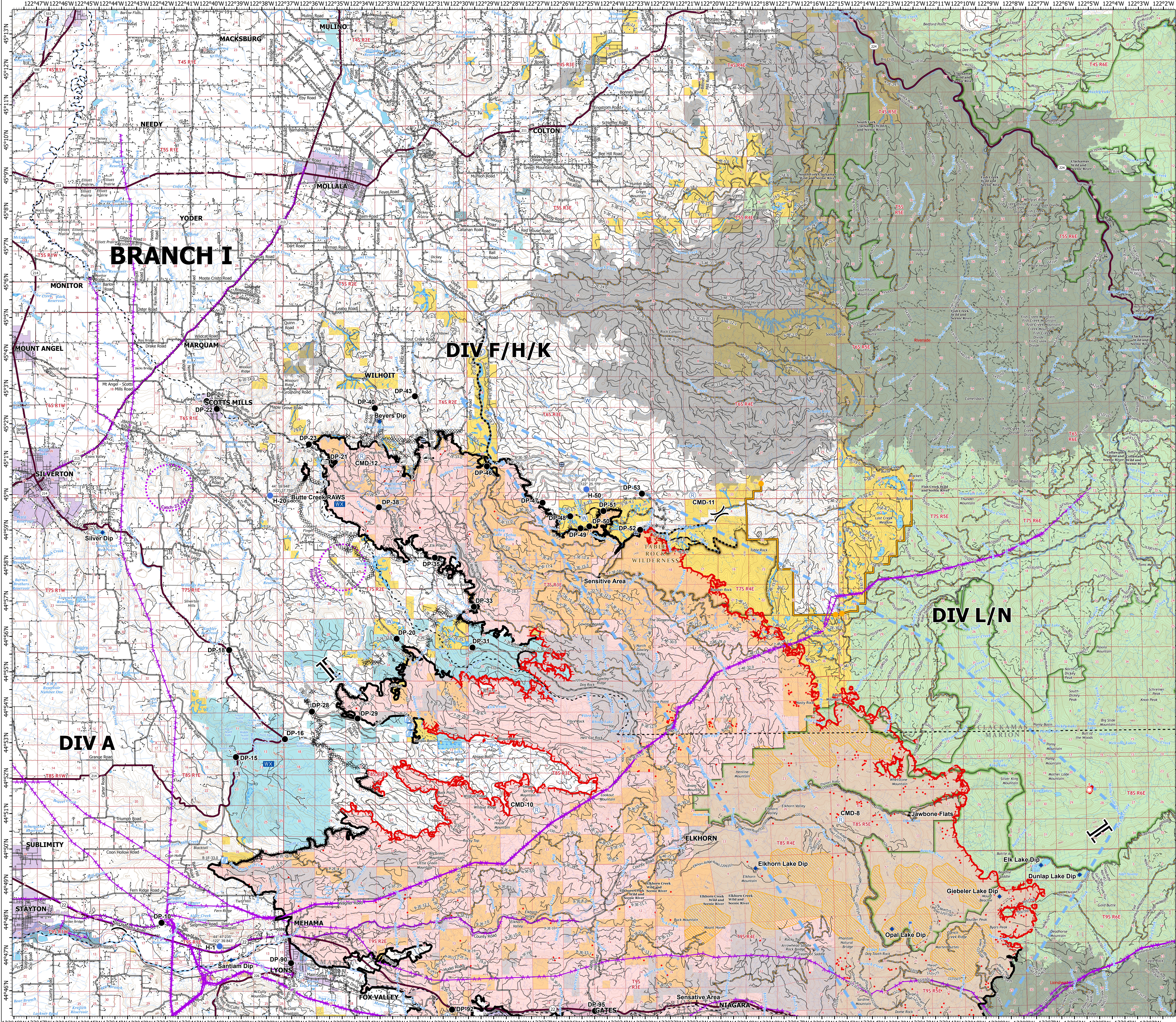
OPS Branch I

Beachie Creek
ORWIF-200299

9/29/20

192,848 acres | 78,043 hectares
at 09/27/20 @ 2127

- IR Isolated Heat Source
- IR Scattered Heat
- ⊠ Bridge
- ⊙ Camp
- ⊗ Closure
- Dip Site
- Drop Point
- Fire Station
- Gate
- Helispot
- Internet Access
- Lookout
- Mobile Weather Unit
- Repeater
- Spot Fire
- Stream Crossing
- Water Source
- Water Development or Draft Site
- Value at Risk
- ⊗ Division Break
- ⊗ Branch Break
- Contained Line
- ⊗ Completed Dozer Line
- ⊗ Completed Hand Line
- Road as Completed Line
- Access or Improved Road
- Planned Fire Line
- Planned Secondary Line
- Aerial Hazard
- Temporary Flight Restriction
- UAS Launch and Recovery Zone
- Management Action Point
- Uncontrolled Fire Edge
- Wildfire Daily Fire Perimeter
- Other Daily Wildfire Perimeter
- County Boundary
- Structures
- City Limits
- Twn Rng
- Section
- FS Wilderness
- BLM Wilderness
- Bureau of Land Management
- U.S. Forest Service
- Other Federal
- State
- Local Government
- Private/Unknown
- State Highway
- County Road
- Major road
- Intermediate road
- Minor road
- Decommissioned or Closed



1:60,000 - PNMWMT3 - 9/28/2020 2134
Acres from GIS
North American 1983 Datum, LatLong Grid