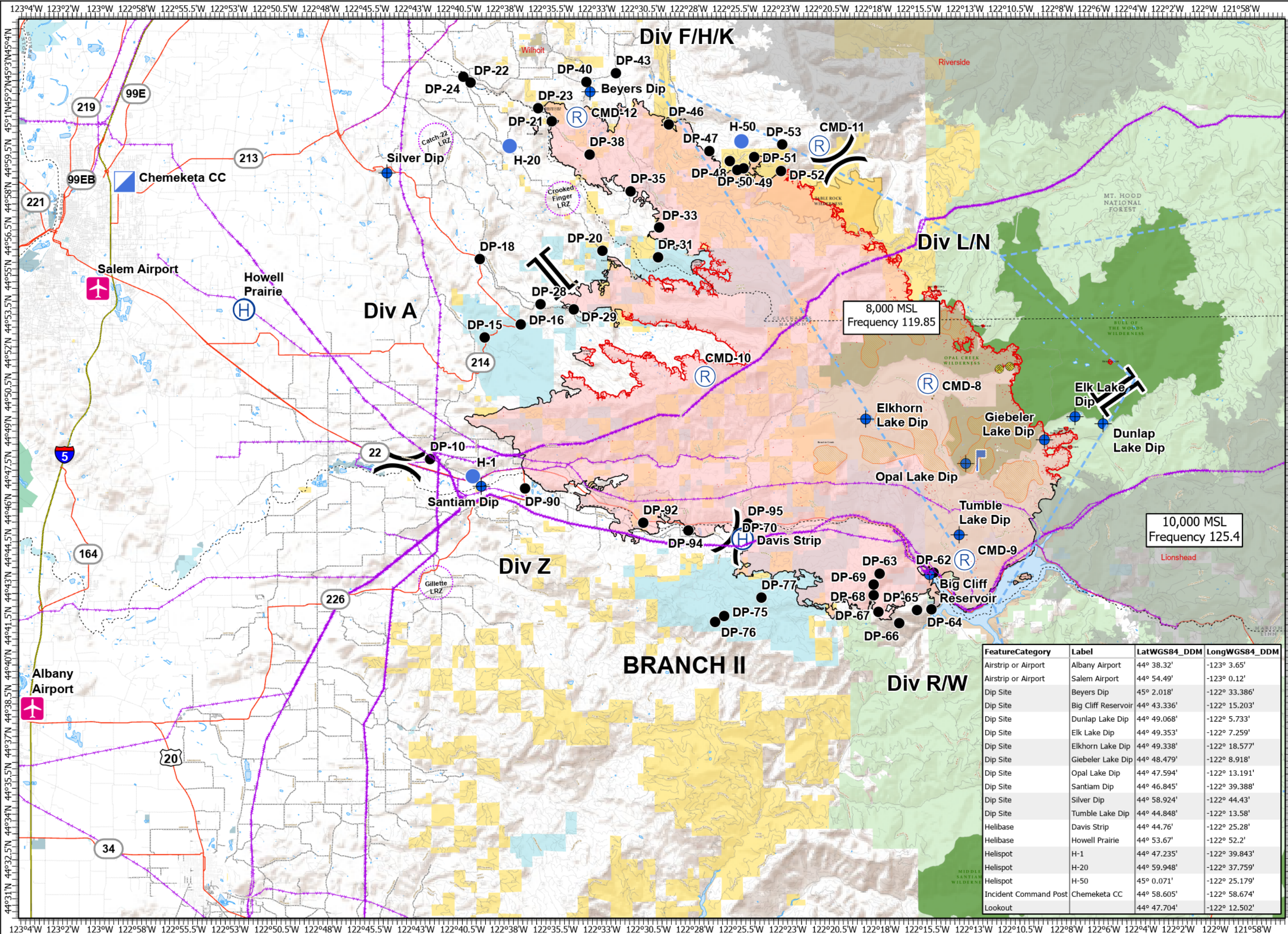


Pilot

Beachie Creek
 ORWIF-200299
 9/29/20
 192,848 acres
 78,043 hectares
 as of 09/27/20 @ 2127

- IR Isolated Heat Source
- IR Scattered Heat Source
- ✈ Airstrip or Airport
- ♦ Dip Site
- Drop Point
- Helibase
- Helispot
- ▢ Incident Command Post
- └ Lookout
- R Repeater
-) Division Break
- || Branch Break
- A- Aerial Hazard
- Temporary Flight Restriction
- Mine Waste Aerial Avoidance



8,000 MSL
 Frequency 119.85

10,000 MSL
 Frequency 125.4

| FeatureCategory | Label | LatWGS84_DDM | LongWGS84_DDM |
|-----------------------|---------------------|--------------|---------------|
| Airstrip or Airport | Albany Airport | 44° 38.32' | -123° 3.65' |
| Airstrip or Airport | Salem Airport | 44° 54.49' | -123° 0.12' |
| Dip Site | Beyers Dip | 45° 2.018' | -122° 33.386' |
| Dip Site | Big Cliff Reservoir | 44° 43.336' | -122° 15.203' |
| Dip Site | Dunlap Lake Dip | 44° 49.068' | -122° 5.733' |
| Dip Site | Elk Lake Dip | 44° 49.353' | -122° 7.259' |
| Dip Site | Elkhorn Lake Dip | 44° 49.338' | -122° 18.577' |
| Dip Site | Giebeler Lake Dip | 44° 48.479' | -122° 8.918' |
| Dip Site | Opal Lake Dip | 44° 47.594' | -122° 13.191' |
| Dip Site | Santiam Dip | 44° 46.845' | -122° 39.388' |
| Dip Site | Silver Dip | 44° 58.924' | -122° 44.43' |
| Dip Site | Tumble Lake Dip | 44° 44.848' | -122° 13.58' |
| Helibase | Davis Strip | 44° 44.76' | -122° 25.28' |
| Helibase | Howell Prairie | 44° 53.67' | -122° 52.2' |
| Helispot | H-1 | 44° 47.235' | -122° 39.843' |
| Helispot | H-20 | 44° 59.948' | -122° 37.759' |
| Helispot | H-50 | 44° 0.071' | -122° 25.179' |
| Incident Command Post | Chemeketa CC | 44° 58.605' | -122° 58.674' |
| Lookout | | 44° 47.704' | -122° 12.502' |

