

Suppression Repair

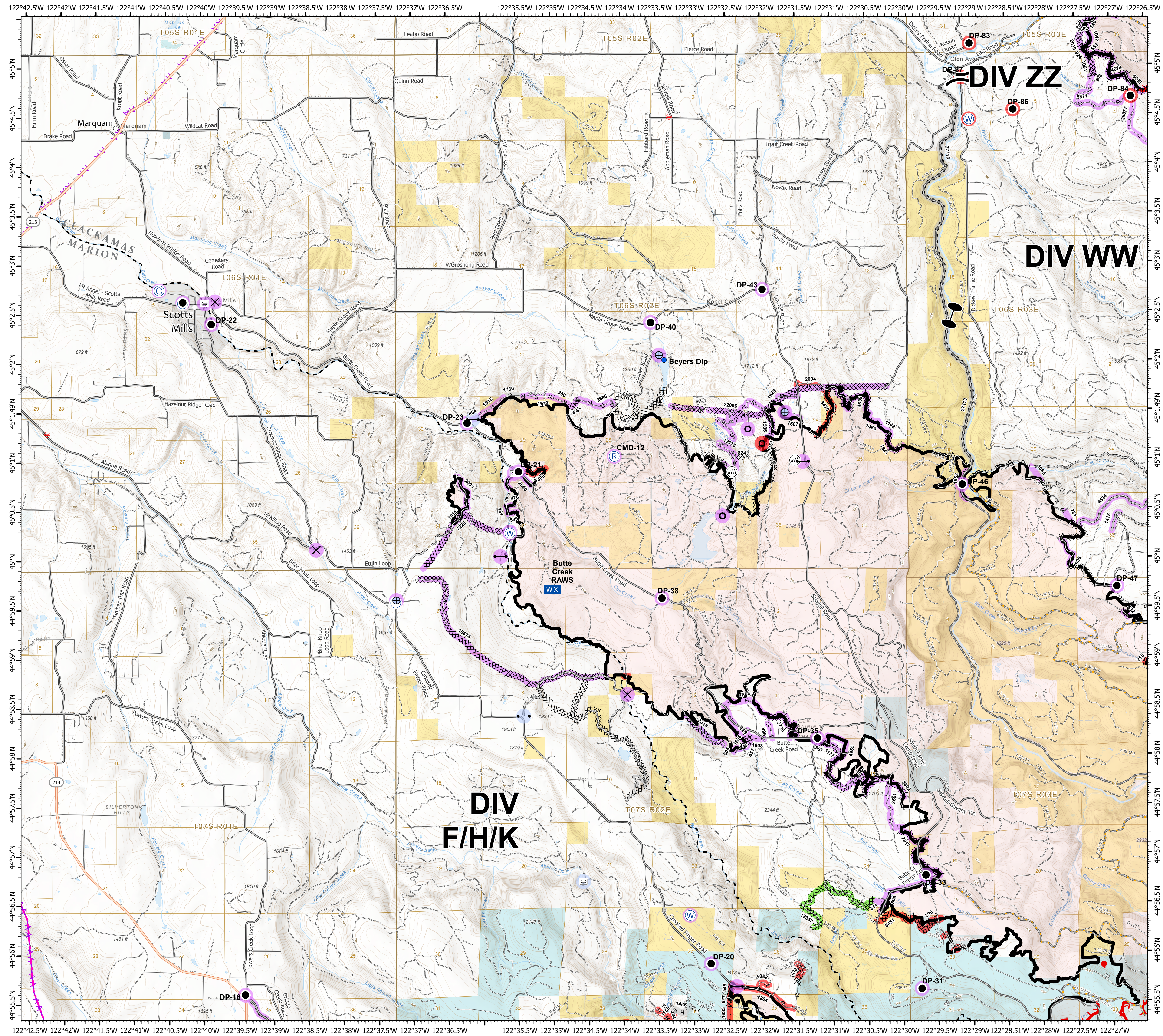
Beachie Creek ORWIF-200299 Riverside ORMHF-000859 10/02/20 Page: 8

- Repair Point Status**
- Repair Needed
 - No Repair Needed
 - Unknown
- Repair Line Status**
- Completed - Inspected
 - Repair Needed
 - Other - See Comments
 - Unknown
- Legend**
- Dip Site
 - Drop Point
 - Fire Station
 - Gate
 - Internet Access
 - Mobile Weather Unit
 - Repeater
 - Stream Crossing
 - Water Source
 - Water Development or Draft Site
 - Bridge
 - Camp
 - Closure
 - Division Break
 - Culvert
 - Completed Dozer Line
 - Completed Hand Line
 - Road as Completed Line
 - Access or Improved Road
 - Planned Fire Line
 - Planned Secondary Line
 - Aerial Hazard
 - Uncontrolled Fire Edge
 - BPA Transmission Lines
 - Wildfire Daily Fire Perimeter
 - Fire Station
 - City, Town, or Community
 - State Highway
 - County Road
 - Major road
 - Intermediate road
 - Minor road
 - Decommissioned or Closed
 - Rivers and Streams
 - Lake, Pond or Reservoir
 - County Boundary
 - City Limits
 - Bureau of Land Management
 - State
 - Local Government
 - Private/Unknown

FC Point Type	Repair Status	Repair Comments	Label
Bridge	No Repair Needed		
Bridge	Unknown		
Bridge	Unknown		
Bridge	Unknown		
Camp	Unknown		
Closure	Unknown		
Closure	Unknown		
Culvert	Repair Needed		
Culvert	Unknown		
Culvert	Unknown	Washed out, equipment repair needed	
Drop Point	Repair Needed		DP-83
Drop Point	Repair Needed		DP-84
Drop Point	Repair Needed		DP-86
Drop Point	Repair Needed		DP-87
Drop Point	Unknown		DP-30
Drop Point	Unknown		DP-21
Drop Point	Unknown		DP-22
Drop Point	Unknown		DP-23
Drop Point	Unknown		DP-24

FC Point Type	Repair Status	Repair Comments	Label
Drop Point	Unknown		DP-31
Drop Point	Unknown		DP-33
Drop Point	Unknown		DP-35
Drop Point	Unknown		DP-38
Drop Point	Unknown		DP-40
Drop Point	Unknown		DP-43
Drop Point	Unknown		DP-46
Drop Point	Unknown		DP-47
Gate	No Repair Needed		
Gate	Unknown		
Gate	Unknown		
Gate	Unknown		
Repeater	Unknown		CMD-12
Stream Crossing	Repair Needed	Consult road engineer	
Water Development or Draft Site	Unknown		
Water Development or Draft Site	Unknown		
Water Source	Repair Needed		
Water Source	Unknown		
Water Source	Unknown		

FC Line Type	Repair Status	Repair Comments	Length Feet
Access or Improved Road	Unknown		6534
Completed Dozer Line	Completed - Inspected	Consult land owner	824
Completed Dozer Line	Repair Needed		12347
Completed Dozer Line	Repair Needed	Repair per local specs, needs a few water bars on slopes, obliterate berms and push piles, scatter slash on line. Consult local landowner for line off BLM land.	3470
Completed Dozer Line	Unknown		457
Completed Dozer Line	Unknown	Consult local land owner, has berm from dozer push, some pushed over trees	961
Completed Dozer Line	Unknown		967
Completed Dozer Line	Unknown		1177
Completed Dozer Line	Unknown		1351
Completed Dozer Line	Unknown		1385
Completed Dozer Line	Unknown		1641
Completed Dozer Line	Unknown		3315
Completed Dozer Line	Unknown		3738
Completed Dozer Line	Unknown		3802
Completed Dozer Line	Unknown		4635
Completed Dozer Line	Unknown		4955
Completed Dozer Line	Unknown		7017
Completed Dozer Line	Unknown		7228
Completed Dozer Line	Unknown		12347
Completed Dozer Line	Unknown		15674
Completed Dozer Line	Unknown		22096
Completed Dozer Line	Unknown		22096
Completed Hand Line	Repair Needed	obliterate berm, scatter slash over line	
Completed Hand Line	Repair Needed	obliterate berms, scatter slash over line	
Completed Hand Line	Unknown		375
Completed Hand Line	Unknown		476
Completed Hand Line	Unknown		505
Completed Hand Line	Unknown		539



0 0.5 1 2 Miles

1:33,000 - 10/1/2020 2040
Acres from GIS
North American 1983 Datum, LatLong Grid