

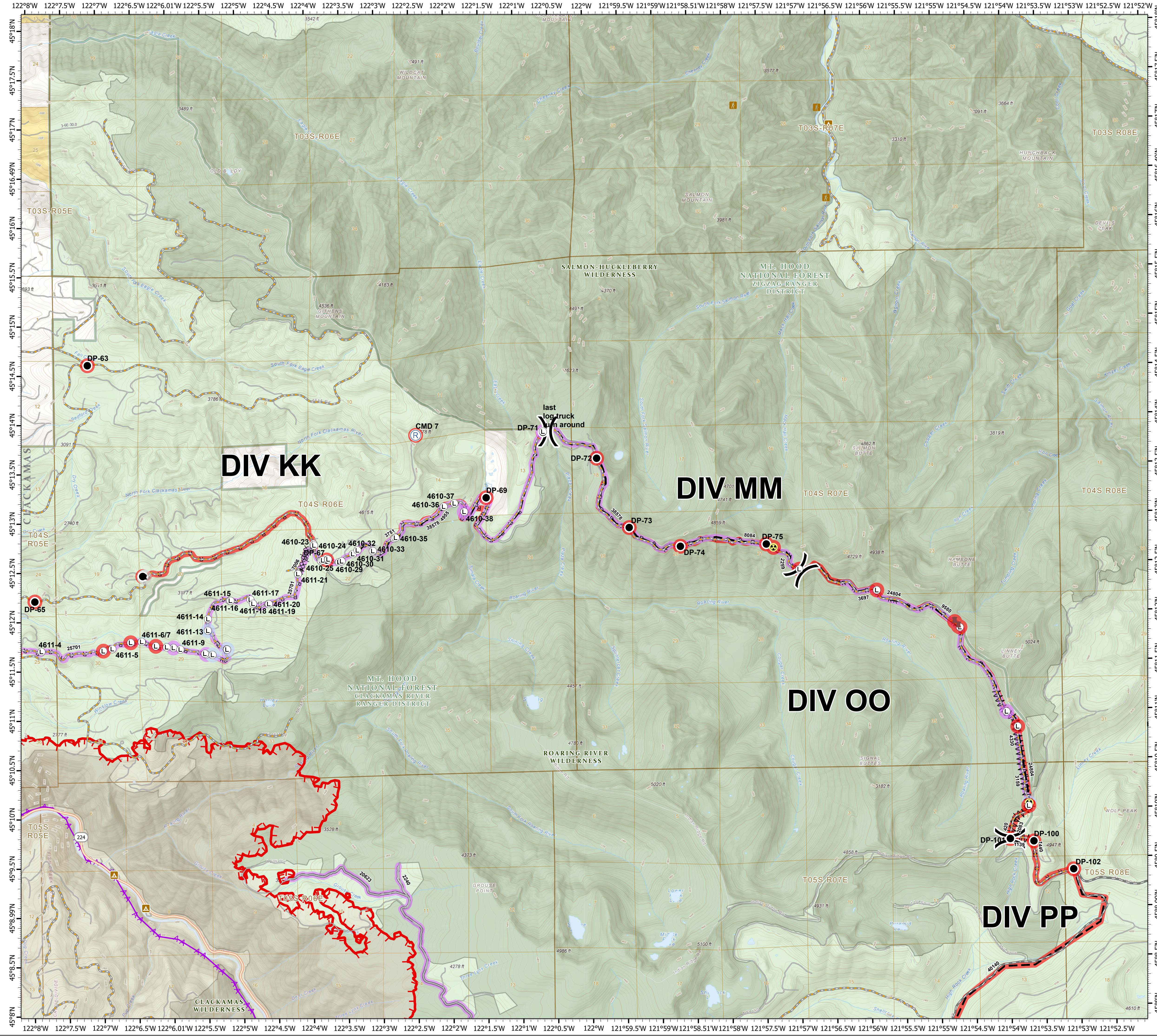
Suppression Repair

Beachie Creek
ORWIF-200299
Riverside 2
10/02/20
Page: 2

- Repair Point Status**
- Repair Needed
 - No Repair Needed
 - Other - See Comments
 - Unknown
- Repair Line Status**
- Repair Needed
 - Unknown
 - Drop Point
 - Dozer Push
 - Hazard
 - Landing or Log Deck
 - Repeater
- Legend**
- R Resource Location
 - X Division Break
 - XX XX Completed Dozer Line
 - R - Road as Completed Line
 - Access or Improved Road
 - Line Break Completed
 - Planned Fire Line
 - Aerial Hazard
 - Uncontrolled Fire Edge
 - Wildfire Daily Fire Perimeter
 - Campground
 - Trailhead
 - State Highway
 - Major road
 - Intermediate road
 - Minor road
 - Decommissioned or Closed
 - Rivers and Streams
 - Lake, Pond or Reservoir
 - County Boundary
 - Ranger District Boundaries
 - Forest Service Wilderness Area
 - Bureau of Land Management
 - U.S. Forest Service
 - Private/Unknown

FC Point Type	Repair Status	Repair Comments	Label	FC Point Type	Repair Status	Repair Comments	Label
Dozer Push	Repair Needed			Landing or Log Deck			4610-27
Dozer Push	Repair Needed			Landing or Log Deck			4610-28
Drop Point	Repair Needed		DP-101	Landing or Log Deck			4610-29
Drop Point	Repair Needed		DP-101	Landing or Log Deck			4610-30
Drop Point	Repair Needed		DP-102	Landing or Log Deck			4610-31
Drop Point	Repair Needed		DP-63	Landing or Log Deck			4610-32
Drop Point	Repair Needed		DP-64	Landing or Log Deck			4610-33
Drop Point	Repair Needed		DP-65	Landing or Log Deck			4610-34
Drop Point	Repair Needed		DP-66	Landing or Log Deck			4610-35
Drop Point	Repair Needed		DP-67	Landing or Log Deck			4610-36
Drop Point	Repair Needed		DP-69	Landing or Log Deck			4610-37
Drop Point	Repair Needed		DP-71	Landing or Log Deck			4610-38
Drop Point	Repair Needed		DP-72	Landing or Log Deck			4610-39
Drop Point	Repair Needed		DP-73	Landing or Log Deck			4610-40
Drop Point	Repair Needed		DP-74	Landing or Log Deck			4610-41
Drop Point	Repair Needed		DP-75	Landing or Log Deck			4610-42
Hazard	No Repair Needed	One way road. No turnaround. Contact Div O before proceeding.		Landing or Log Deck			4611-10
Hazard	Repair Needed	Waterbar and divert sweep away from failure. cutbank releveling.		Landing or Log Deck			4611-11
Landing or Log Deck				Landing or Log Deck			4611-12
Landing or Log Deck			4610-23	Landing or Log Deck			4611-13
Landing or Log Deck			4610-24	Landing or Log Deck			4611-14
Landing or Log Deck			4610-25	Landing or Log Deck	No Repair Needed		4611-15

FC Line Type	Repair Status	Repair Comments	Length Feet
Access or Improved Road	Unknown		2240
Access or Improved Road	Unknown		20623
Completed Dozer Line	Repair Needed	Dozer line needs significant repair. Follow decom with slash and water bars.	
Completed Dozer Line	Repair Needed	Pull in berms, may not be needed until log deck is removed.	
Completed Dozer Line	Repair Needed	Light chipping and sweeping needed.	1139
Line Break Completed	Repair Needed	Logs in ditch need to be removed. Chip smaller material. Berms need to be knocked down. Rocky debris behind shoulder needs additional repair.	2083
Line Break Completed	Unknown		3159
Line Break Completed	Unknown		4330
Planned Fire Line	Repair Needed	Road grading, remove berms, repair cut and fill slopes (marked separately), and chipping -Suing.	24804
Planned Fire Line	Repair Needed	Chipping needed throughout NF 58 and entry to NF 5830 and NF 150. Crews needed to sweep debris.	40140
Planned Fire Line	Unknown		8084
Planned Fire Line	Unknown		38578
Road as Completed Line	Repair Needed		
Road as Completed Line	Repair Needed	Road grading, remove berms, repair cut and fill slopes (marked separately), and chipping -Suing.	
Road as Completed Line	Repair Needed	Bladed and water bars	
Road as Completed Line	Repair Needed	Sweeping of debris and light chipping need at intersection of DP 102	
Road as Completed Line	Repair Needed	The road needs drainage. excavator work, too narrow for grader on out-sloped road, remove slash from road, road has little surfacing and very bony.	
Road as Completed Line	Repair Needed	Begin grading to remove berm on roadside from tracked equipment, begin slash removal from drainage features, barricade light grading, road prism needs brushed, ditches pulled and graded to remove ruts and have proper drainage. Will require spot rock, starts at 150 spur, this segment has worst rutting.	
Road as Completed Line	Repair Needed	Light chipping needed	420
Road as Completed Line	Repair Needed	Sweeping of debris	1440
Road as Completed Line	Repair Needed		3751
Road as Completed Line	Repair Needed	Needs grading of berm caused by dozer. Masticated edge needs follow up hand cutting (stems were cut too long).	4955
Road as Completed Line	Unknown		2259
Road as Completed Line	Unknown		3697
Road as Completed Line	Unknown		7006
Road as Completed Line	Unknown		9580
Road as Completed Line	Unknown		25701



0 0.5 1 2 Miles

1:33,000 - 10/1/2020 2037
Acres from GIS
North American 1983 Datum, Lat/Long Grid