

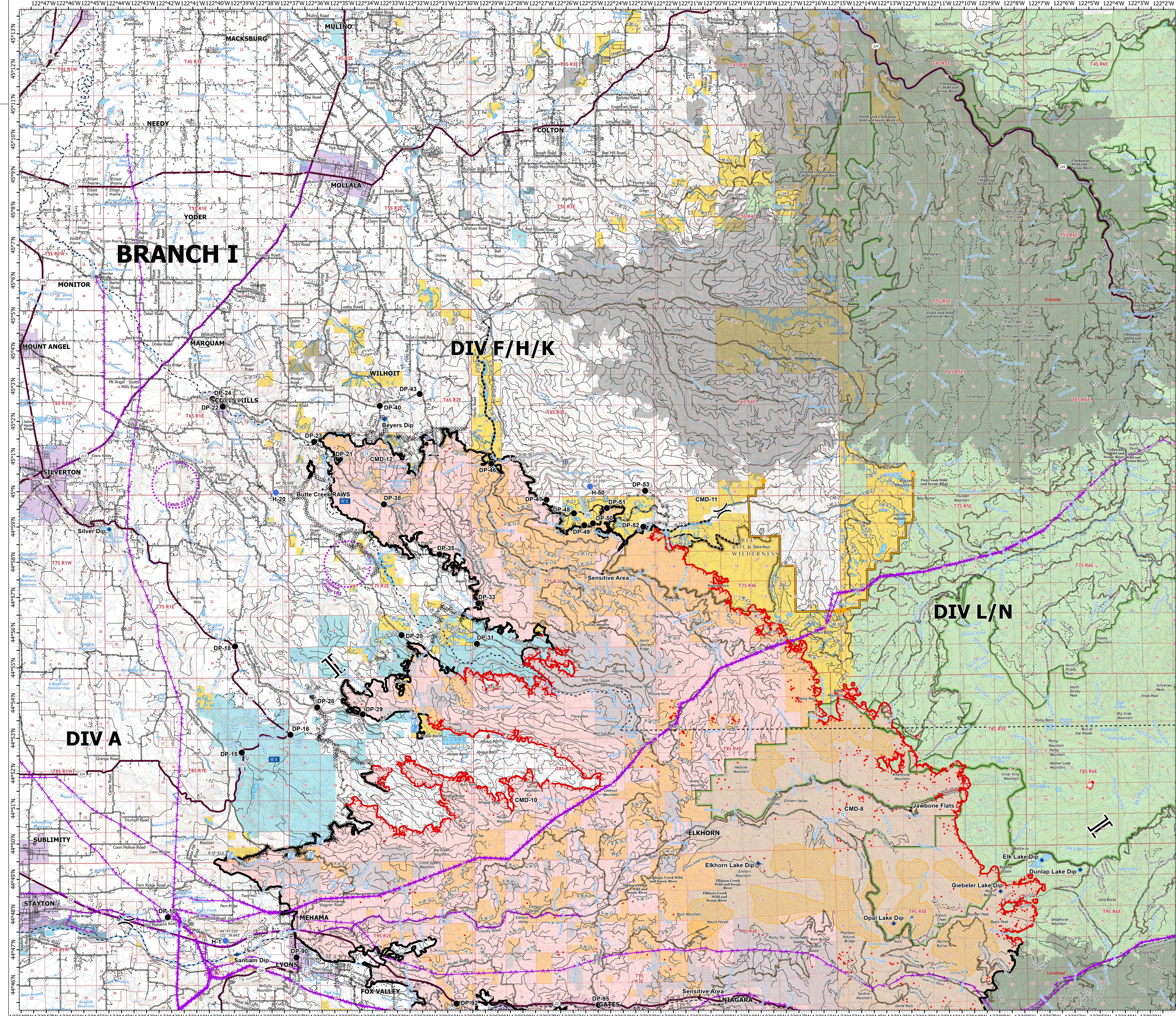
OPS Branch I

Beachie Creek
ORWIF-200299

10/02/20

192,882 acres | 78,090 hectares
at 10/01/20 @ 2020

- IR Isolated Heat Source
- IR Scattered Heat
- ✕ Bridge
- ⊙ Camp
- ✕ Closure
- Dip Site
- Drop Point
- Fire Station
- Gate
- Helispot
- Internet Access
- Lookout
- Mobile Weather Unit
- Repeater
- Spot Fire
- Stream Crossing
- Water Source
- Water Development or Draft Site
- Value at Risk
- ✕ Division Break
- || Branch Break
- Contained Line
- Completed Dozer Line
- Completed Hand Line
- Road as Completed Line
- Access or Improved Road
- Planned Fire Line
- Planned Secondary Line
- Aerial Hazard
- UAS Launch and Recovery Zone
- Management Action Point
- Uncontrolled Fire Edge
- Wildfire Daily Fire Perimeter
- Other Daily Wildfire Perimeter
- County Boundary
- Structures
- City Limits
- Twn Rng
- Section
- FS Wilderness
- BLM Wilderness
- Bureau of Land Management
- U.S. Forest Service
- Other Federal
- State
- Local Government
- Private/Unknown
- State Highway
- County Road
- Major road
- Intermediate road
- Minor road
- Decommissioned or Closed



1:60,000 - PNMIMT3 - 10/1/2020 2000
Acres from GIS
North American 1983 Datum, LatLong Grid