

# OPS Branch I

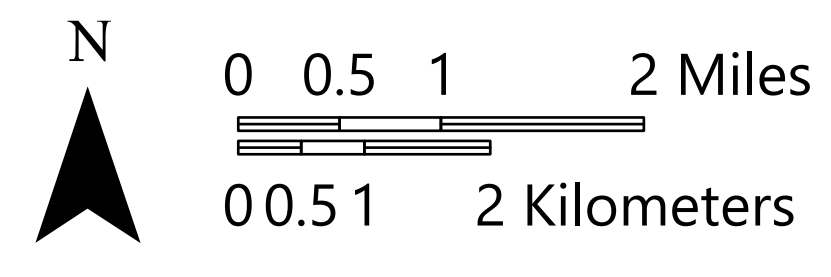
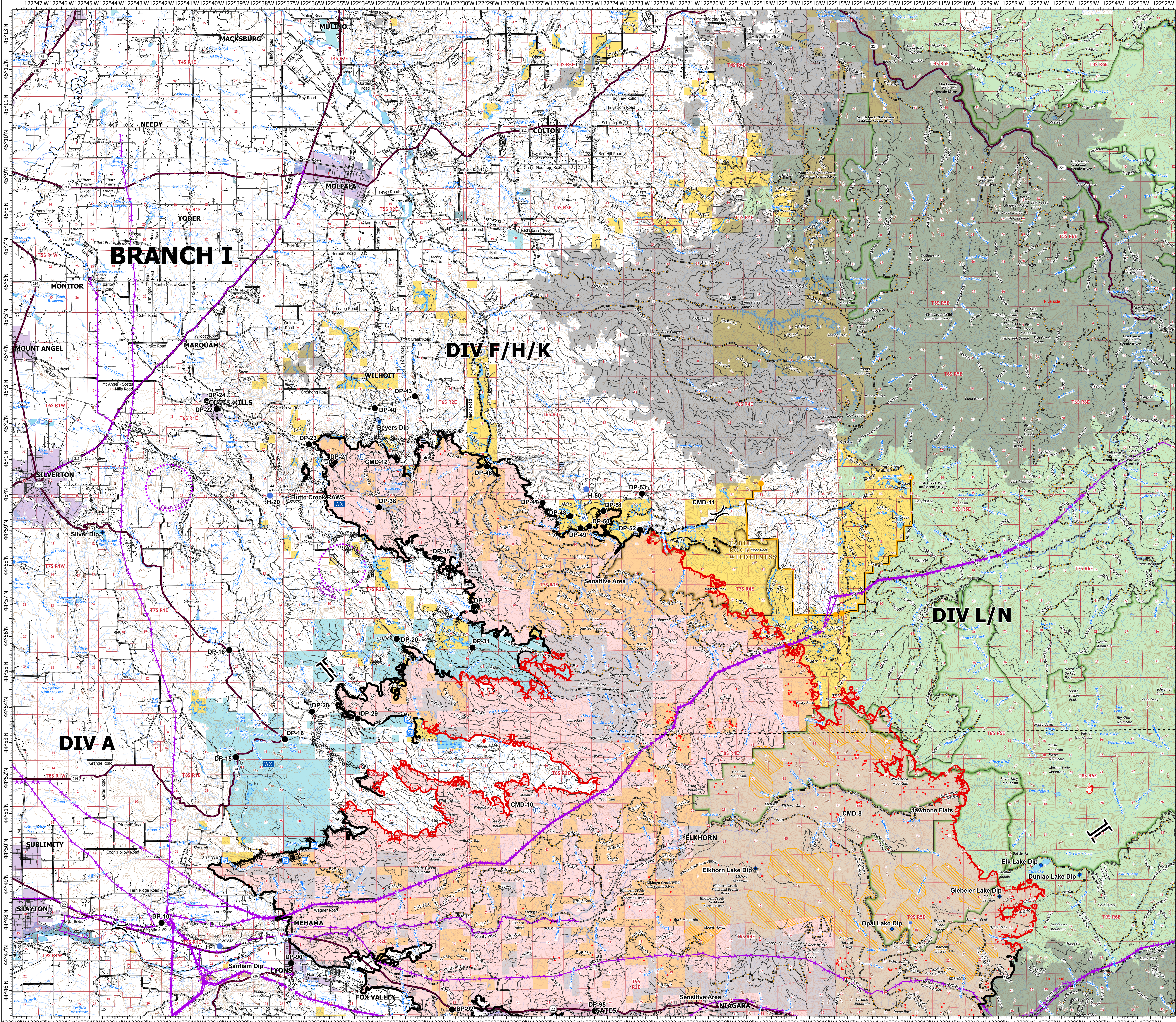
Beachie Creek

ORWIF-200299

10/02/20

192,882 acres | 78,090 hectares  
at 10/01/20 @ 2020

- IR Isolated Heat Source
- IR Scattered Heat
- ⊕ Bridge
- ⊕ Camp
- ⊕ Closure
- ⊕ Dip Site
- ⊕ Drop Point
- ⊕ Fire Station
- ⊕ Gate
- ⊕ Helispot
- ⊕ Internet Access
- ⊕ Lookout
- ⊕ Mobile Weather Unit
- ⊕ Repeater
- ⊕ Spot Fire
- ⊕ Stream Crossing
- ⊕ Water Source
- ⊕ Water Development or Draft Site
- ⊕ Value at Risk
- ⊕ Division Break
- ⊕ Branch Break
- Contained Line
- ⊕ Completed Dozer Line
- ⊕ Completed Hand Line
- Road as Completed Line
- Access or Improved Road
- Planned Fire Line
- ⊕ Planned Secondary Line
- ⊕ Aerial Hazard
- ⊕ UAS Launch and Recovery Zone
- ⊕ Management Action Point
- ⊕ Uncontrolled Fire Edge
- ⊕ Wildfire Daily Fire Perimeter
- ⊕ Other Daily Wildfire Perimeter
- ⊕ County Boundary
- ⊕ Structures
- ⊕ City Limits
- ⊕ Twn Rng
- ⊕ Section
- ⊕ FS Wilderness
- ⊕ BLM Wilderness
- ⊕ Bureau of Land Management
- ⊕ U.S. Forest Service
- ⊕ Other Federal
- ⊕ State
- ⊕ Local Government
- ⊕ Private/Unknown
- State Highway
- County Road
- Major road
- Intermediate road
- Minor road
- Decommissioned or Closed



1:60,000 - PNMIMT3 - 10/1/2020 2036  
Acres from GIS  
North American 1983 Datum, LatLong Grid