

Air Ops

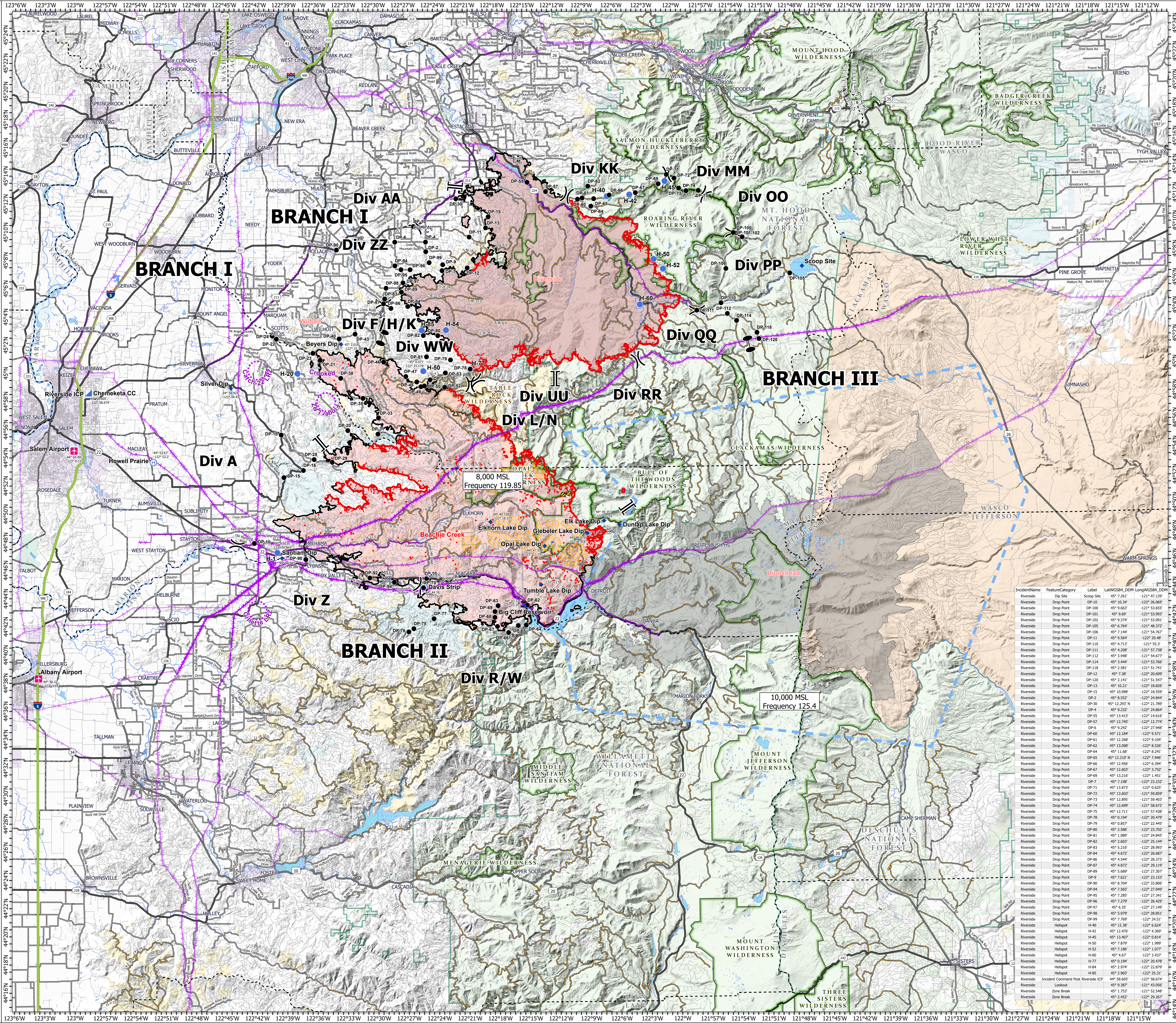
Beachie Creek

ORWIF-200299

10/03/20
192,901 acres
78,090 hectares
as of 10/01/20 @ 2204

- IR Isolated Heat Source
- Mine Waste Aerial Avoidance
- IR Scattered Heat
- Airstrip or Airport
- Dip Site
- Drop Point
- Helibase
- Helispot
- Incident Command Post
- Lookout
- Zone Break
- Division Break
- Branch Break
- Uncontrolled Fire Edge
- Contained Line
- Aerial Hazard
- UAS Launch and Recovery Zone
- Wildfire Daily Fire Perimeter
- Other Fire Perimeters
- Interstate
- US Highway
- State Highway
- County Road
- Major road
- Intermediate road
- Minor road
- County Boundary
- FS Wilderness
- BLM Wilderness
- USDA-FS Forests
- City Limits
- Bureau of Land Management
- U.S. Forest Service
- U.S. Fish and Wildlife Service
- Bureau of Indian Affairs
- Other Federal
- State
- Local Government
- Private/Unknown

IncidentName	FeatureCategory	Label	LatWGS84_DTM	LongWGS84_DTM
Beachie Creek	Airstrip or Airport	Albany Airport	44° 36.32'	-122° 3.65'
Beachie Creek	Airstrip or Airport	Salem Airport	44° 54.49'	-122° 0.12'
Beachie Creek	Dip Site	Beyers Dip	45° 2.018'	-122° 33.386'
Beachie Creek	Dip Site	Big Cliff Reservoir	44° 43.330'	-122° 15.203'
Beachie Creek	Dip Site	Chapel Lake Dip	44° 49.069'	-122° 5.737'
Beachie Creek	Dip Site	Elk Lake Dip	44° 49.353'	-122° 7.259'
Beachie Creek	Dip Site	Elkhorn Lake Dip	44° 49.338'	-122° 18.577'
Beachie Creek	Dip Site	Gableler Lake Dip	44° 48.479'	-122° 8.918'
Beachie Creek	Dip Site	Opal Lake Dip	44° 47.594'	-122° 13.911'
Beachie Creek	Dip Site	Santiam Dip	44° 46.945'	-122° 39.388'
Beachie Creek	Dip Site	Silver Dip	44° 58.924'	-122° 44.43'
Beachie Creek	Dip Site	Tumble Lake Dip	44° 44.848'	-122° 13.58'
Beachie Creek	Drop Point	DP-10	44° 47.905'	-122° 42.141'
Beachie Creek	Drop Point	DP-15	44° 52.572'	-122° 39.864'
Beachie Creek	Drop Point	DP-16	44° 53.073'	-122° 37.216'
Beachie Creek	Drop Point	DP-18	44° 55.594'	-122° 39.415'
Beachie Creek	Drop Point	DP-20	44° 55.89'	-122° 32.76'
Beachie Creek	Drop Point	DP-21	44° 55.479'	-122° 35.479'
Beachie Creek	Drop Point	DP-22	45° 2.399'	-122° 39.866'
Beachie Creek	Drop Point	DP-23	45° 1.388'	-122° 36.21'
Beachie Creek	Drop Point	DP-24	45° 2.621'	-122° 40.272'
Beachie Creek	Drop Point	DP-28	44° 53.945'	-122° 36.14'
Beachie Creek	Drop Point	DP-29	44° 53.645'	-122° 34.330'
Beachie Creek	Drop Point	DP-31	44° 55.628'	-122° 29.748'
Beachie Creek	Drop Point	DP-33	44° 56.778'	-122° 29.683'
Beachie Creek	Drop Point	DP-35	44° 58.129'	-122° 31.223'
Beachie Creek	Drop Point	DP-38	44° 59.602'	-122° 31.452'
Beachie Creek	Drop Point	DP-40	45° 2.4'	-122° 33.577'
Beachie Creek	Drop Point	DP-43	45° 2.73'	-122° 31.978'
Beachie Creek	Drop Point	DP-46	45° 0.741'	-122° 29.129'
Beachie Creek	Drop Point	DP-47	44° 59.701'	-122° 36.937'
Beachie Creek	Drop Point	DP-48	44° 59.314'	-122° 25.832'
Beachie Creek	Drop Point	DP-49	44° 58.972'	-122° 25.421'
Beachie Creek	Drop Point	DP-50	44° 59.026'	-122° 25.072'
Beachie Creek	Drop Point	DP-51	44° 59.456'	-122° 35.509'
Beachie Creek	Drop Point	DP-52	44° 58.917'	-122° 23.051'
Beachie Creek	Drop Point	DP-53	44° 59.938'	-122° 22.971'
Beachie Creek	Drop Point	DP-62	44° 43.407'	-122° 14.978'
Beachie Creek	Drop Point	DP-63	44° 43.308'	-122° 17.879'
Beachie Creek	Drop Point	DP-64	44° 42.07'	-122° 15.108'
Beachie Creek	Drop Point	DP-65	44° 41.967'	-122° 15.894'
Beachie Creek	Drop Point	DP-66	44° 41.474'	-122° 16.885'
Beachie Creek	Drop Point	DP-67	44° 41.911'	-122° 17.969'
Beachie Creek	Drop Point	DP-68	44° 42.055'	-122° 18.105'
Beachie Creek	Drop Point	DP-69	44° 42.97'	-122° 18.211'
Beachie Creek	Drop Point	DP-70	44° 44.705'	-122° 25.305'
Beachie Creek	Drop Point	DP-75	44° 41.801'	-122° 26.298'
Beachie Creek	Drop Point	DP-76	44° 41.575'	-122° 26.372'
Beachie Creek	Drop Point	DP-77	44° 42.496'	-122° 24.270'
Beachie Creek	Drop Point	DP-90	44° 46.751'	-122° 37.015'
Beachie Creek	Drop Point	DP-92	44° 45.417'	-122° 30.647'
Beachie Creek	Drop Point	DP-94	44° 45.102'	-122° 30.203'
Beachie Creek	Drop Point	DP-95	44° 45.351'	-122° 34.807'
Beachie Creek	Helibase	Davis Strip	44° 44.76'	-122° 25.28'
Beachie Creek	Helibase	Howell Prairie	44° 53.67'	-122° 52.7'
Beachie Creek	Helispot	H-1	44° 47.235'	-122° 29.842'
Beachie Creek	Helispot	H-20	44° 59.945'	-122° 37.709'
Beachie Creek	Helispot	H-50	45° 0.071'	-122° 25.179'
Beachie Creek	Incident Command Post	Chemeketa CC	44° 58.605'	-122° 58.674'
Beachie Creek	Lookout		44° 47.704'	-122° 12.502'



IncidentName	FeatureCategory	Label	LatWGS84_DTM	LongWGS84_DTM
Riverside	Drop Point	DP-10	45° 10.34'	-122° 26.069'
Riverside	Drop Point	DP-100	45° 9.663'	-121° 53.655'
Riverside	Drop Point	DP-101	45° 9.169'	-121° 53.993'
Riverside	Drop Point	DP-102	45° 9.174'	-121° 53.991'
Riverside	Drop Point	DP-105	45° 6.764'	-121° 48.372'
Riverside	Drop Point	DP-106	45° 7.144'	-121° 54.767'
Riverside	Drop Point	DP-111	45° 9.564'	-122° 20.48'
Riverside	Drop Point	DP-112	45° 4.712'	-121° 55.27'
Riverside	Drop Point	DP-113	45° 4.208'	-121° 57.738'
Riverside	Drop Point	DP-114	45° 3.444'	-121° 53.766'
Riverside	Drop Point	DP-118	45° 3.281'	-121° 51.741'
Riverside	Drop Point	DP-12	45° 7.38'	-122° 30.699'
Riverside	Drop Point	DP-120	45° 2.141'	-121° 51.547'
Riverside	Drop Point	DP-13	45° 10.21'	-122° 18.826'
Riverside	Drop Point	DP-15	45° 10.988'	-122° 18.559'
Riverside	Drop Point	DP-2	45° 8.552'	-122° 36.846'
Riverside	Drop Point	DP-30	45° 12.293'	-122° 21.789'
Riverside	Drop Point	DP-4	45° 9.232'	-122° 24.864'
Riverside	Drop Point	DP-55	45° 13.415'	-122° 14.616'
Riverside	Drop Point	DP-57	45° 12.765'	-122° 12.774'
Riverside	Drop Point	DP-6	45° 9.242'	-122° 27.948'
Riverside	Drop Point	DP-60	45° 12.184'	-122° 9.571'
Riverside	Drop Point	DP-61	45° 12.268'	-122° 9.104'
Riverside	Drop Point	DP-62	45° 13.098'	-122° 16.528'
Riverside	Drop Point	DP-64	45° 11.68'	-122° 8.241'
Riverside	Drop Point	DP-65	45° 12.210'	-122° 7.946'
Riverside	Drop Point	DP-66	45° 12.458'	-122° 6.394'
Riverside	Drop Point	DP-72	45° 12.603'	-122° 12.752'
Riverside	Drop Point	DP-73	45° 13.216'	-122° 14.911'
Riverside	Drop Point	DP-7	45° 7.198'	-122° 23.232'
Riverside	Drop Point	DP-71	45° 13.873'	-122° 0.625'
Riverside	Drop Point	DP-72	45° 13.603'	-121° 58.859'
Riverside	Drop Point	DP-79	45° 12.895'	-121° 56.459'
Riverside	Drop Point	DP-74	45° 12.699'	-121° 58.672'
Riverside	Drop Point	DP-75	45° 12.711'	-121° 57.438'
Riverside	Drop Point	DP-78	45° 0.194'	-122° 20.479'
Riverside	Drop Point	DP-79	45° 13.857'	-122° 21.441'
Riverside	Drop Point	DP-80	45° 2.586'	-122° 23.702'
Riverside	Drop Point	DP-81	45° 1.089'	-122° 24.845'
Riverside	Drop Point	DP-82	45° 2.603'	-122° 25.144'
Riverside	Drop Point	DP-83	45° 5.216'	-122° 26.983'
Riverside	Drop Point	DP-84	45° 4.872'	-122° 26.667'
Riverside	Drop Point	DP-86	45° 4.544'	-122° 28.373'
Riverside	Drop Point	DP-87	45° 4.872'	-122° 29.119'
Riverside	Drop Point	DP-89	45° 5.689'	-122° 27.307'
Riverside	Drop Point	DP-94	45° 7.565'	-122° 27.949'
Riverside	Drop Point	DP-95	45° 7.285'	-122° 27.341'
Riverside	Drop Point	DP-97	45° 6.335'	-122° 27.149'
Riverside	Drop Point	DP-98	45° 5.979'	-122° 28.851'
Riverside	Drop Point	DP-99	45° 7.769'	-122° 24.51'
Riverside	Helispot	H-46	45° 12.38'	-122° 6.624'
Riverside	Helispot	H-42	45° 12.476'	-122° 4.369'
Riverside	Helispot	H-45	45° 13.407'	-122° 0.814'
Riverside	Helispot	H-50	45° 6.879'	-122° 1.999'
Riverside	Helispot	H-52	45° 7.186'	-122° 1.077'
Riverside	Helispot	H-60	45° 4.67'	-122° 1.437'
Riverside	Helispot	H-77	45° 0.194'	-122° 20.478'
Riverside	Helispot	H-84	45° 2.974'	-122° 22.879'
Riverside	Helispot	H-85	45° 2.965'	-122° 23.31'
Riverside	Incident Command Post	Riverside ICP	44° 58.455'	-122° 18.514'
Riverside	Lookout		45° 9.387'	-121° 43.056'
Riverside	Zone Break		45° 1.753'	-121° 52.548'
Riverside	Zone Break		45° 2.452'	-122° 29.267'

0 1 2 4 Miles
0 1 2 4 Kilometers

1:50,000 - PNWMT3 - 10/2/2020 2143
Aerials from GIS
North American 1983 Datum, Lat/Long Grid