

# Air Ops

## Beachie Creek

### ORWIF-200299

10/03/20  
192,901 acres  
78,090 hectares  
as of 10/01/20 @ 2204

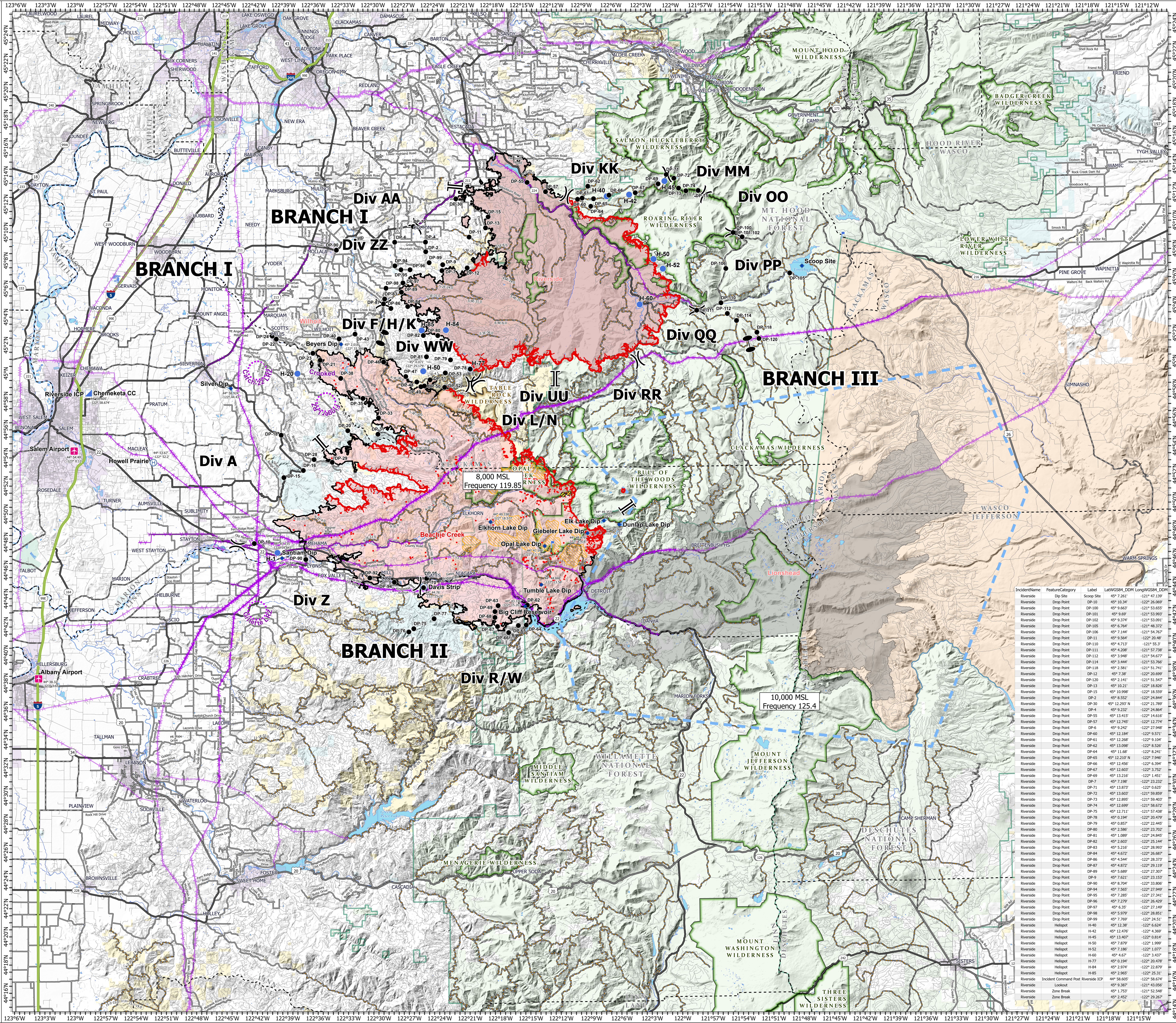
- IR Isolated Heat Source
- Mine Waste Aerial Avoidance
- IR Scattered Heat
- Airstrip or Airport
- Dip Site
- Drop Point
- Helibase
- Helispot
- Incident Command Post
- Lookout
- Zone Break
- Division Break
- Branch Break
- Uncontrolled Fire Edge
- Contained Line
- Aerial Hazard
- UAS Launch and Recovery Zone
- Wildfire Daily Fire Perimeter
- Other Fire Perimeters
- Interstate
- US Highway
- State Highway
- County Road
- Major road
- Intermediate road
- Minor road
- County Boundary
- FS Wilderness
- BLM Wilderness
- USDA-FS Forests
- City Limits
- Bureau of Land Management
- U.S. Forest Service
- U.S. Fish and Wildlife Service
- Bureau of Indian Affairs
- Other Federal
- State
- Local Government
- Private/Unknown

IncidentName	FeatureCategory	Label	LatWGS84_DOM	LongWGS84_DOM
Beachie Creek	Airstrip or Airport	Albany Airport	44° 38.32'	-122° 3.65'
Beachie Creek	Airstrip or Airport	Salem Airport	44° 54.49'	-122° 0.12'
Beachie Creek	Dip Site	Beyers Dip	45° 2.018'	-122° 33.386'
Beachie Creek	Dip Site	Big Cliff Reservoir	44° 43.330'	-122° 15.203'
Beachie Creek	Dip Site	Chum Lake Dip	44° 49.066'	-122° 15.737'
Beachie Creek	Dip Site	Elk Lake Dip	44° 49.353'	-122° 7.259'
Beachie Creek	Dip Site	Elkhorn Lake Dip	44° 49.338'	-122° 18.577'
Beachie Creek	Dip Site	Gebeler Lake Dip	44° 48.479'	-122° 8.918'
Beachie Creek	Dip Site	Opal Lake Dip	44° 47.599'	-122° 13.911'
Beachie Creek	Dip Site	Santiam Dip	44° 46.945'	-122° 39.388'
Beachie Creek	Dip Site	Silver Dip	44° 58.924'	-122° 44.43'
Beachie Creek	Dip Site	Tumble Lake Dip	44° 44.948'	-122° 13.58'
Beachie Creek	Drop Point	DP-10	44° 47.905'	-122° 42.141'
Beachie Creek	Drop Point	DP-15	44° 52.572'	-122° 38.184'
Beachie Creek	Drop Point	DP-16	44° 53.073'	-122° 37.210'
Beachie Creek	Drop Point	DP-18	44° 55.594'	-122° 39.415'
Beachie Creek	Drop Point	DP-20	44° 55.89'	-122° 32.70'
Beachie Creek	Drop Point	DP-21	45° 0.891'	-122° 35.479'
Beachie Creek	Drop Point	DP-22	45° 2.399'	-122° 39.866'
Beachie Creek	Drop Point	DP-23	45° 1.388'	-122° 36.21'
Beachie Creek	Drop Point	DP-24	45° 2.621'	-122° 40.272'
Beachie Creek	Drop Point	DP-26	44° 53.945'	-122° 36.194'
Beachie Creek	Drop Point	DP-29	44° 53.645'	-122° 34.330'
Beachie Creek	Drop Point	DP-31	44° 55.628'	-122° 29.748'
Beachie Creek	Drop Point	DP-33	44° 56.778'	-122° 29.683'
Beachie Creek	Drop Point	DP-35	44° 58.172'	-122° 31.223'
Beachie Creek	Drop Point	DP-38	45° 0.600'	-122° 31.452'
Beachie Creek	Drop Point	DP-40	45° 2.4'	-122° 33.577'
Beachie Creek	Drop Point	DP-43	45° 2.73'	-122° 31.978'
Beachie Creek	Drop Point	DP-46	45° 0.741'	-122° 29.129'
Beachie Creek	Drop Point	DP-47	44° 59.701'	-122° 28.919'
Beachie Creek	Drop Point	DP-48	44° 59.314'	-122° 25.832'
Beachie Creek	Drop Point	DP-49	44° 58.972'	-122° 25.421'
Beachie Creek	Drop Point	DP-50	44° 59.020'	-122° 25.072'
Beachie Creek	Drop Point	DP-51	44° 59.456'	-122° 25.509'
Beachie Creek	Drop Point	DP-52	44° 58.917'	-122° 23.051'
Beachie Creek	Drop Point	DP-53	44° 59.938'	-122° 22.971'
Beachie Creek	Drop Point	DP-62	44° 43.407'	-122° 14.978'
Beachie Creek	Drop Point	DP-63	44° 43.308'	-122° 17.89'
Beachie Creek	Drop Point	DP-64	44° 42.07'	-122° 15.108'
Beachie Creek	Drop Point	DP-65	44° 41.967'	-122° 15.894'
Beachie Creek	Drop Point	DP-66	44° 41.474'	-122° 16.803'
Beachie Creek	Drop Point	DP-67	44° 41.911'	-122° 17.969'
Beachie Creek	Drop Point	DP-68	44° 42.000'	-122° 18.215'
Beachie Creek	Drop Point	DP-69	44° 42.97'	-122° 18.211'
Beachie Creek	Drop Point	DP-70	44° 44.705'	-122° 25.305'
Beachie Creek	Drop Point	DP-75	44° 41.801'	-122° 26.296'
Beachie Creek	Drop Point	DP-76	44° 41.575'	-122° 26.732'
Beachie Creek	Drop Point	DP-77	44° 42.496'	-122° 24.270'
Beachie Creek	Drop Point	DP-90	44° 46.751'	-122° 37.015'
Beachie Creek	Drop Point	DP-92	44° 45.417'	-122° 30.647'
Beachie Creek	Drop Point	DP-94	44° 45.105'	-122° 30.203'
Beachie Creek	Drop Point	DP-95	44° 45.351'	-122° 24.887'
Beachie Creek	Helibase	Davis Strip	44° 44.70'	-122° 25.28'
Beachie Creek	Helibase	Howell Prairie	44° 53.67'	-122° 52.7'
Beachie Creek	Helispot	H-1	44° 47.235'	-122° 29.843'
Beachie Creek	Helispot	H-20	44° 59.946'	-122° 37.709'
Beachie Creek	Helispot	H-50	45° 0.071'	-122° 25.179'
Beachie Creek	Incident Command Post	Chemeketa CC	44° 58.605'	-122° 58.674'
Beachie Creek	Lookout		44° 47.704'	-122° 12.502'

0 1 2 4 Miles  
0 1 2 4 Kilometers



1:50,000 - PNWMT3 - 10/2/2020 2123  
Acres from GIS  
North American 1983 Datum, LatLong Grid



IncidentName	FeatureCategory	Label	LatWGS84_DOM	LongWGS84_DOM
Riverside	Dip Site	Scoop Site	45° 2.611'	-121° 47.139'
Riverside	Drop Point	DP-10	45° 10.34'	-122° 26.069'
Riverside	Drop Point	DP-100	45° 9.663'	-121° 53.655'
Riverside	Drop Point	DP-101	45° 9.169'	-121° 53.993'
Riverside	Drop Point	DP-102	45° 8.274'	-121° 53.901'
Riverside	Drop Point	DP-105	45° 6.764'	-121° 48.372'
Riverside	Drop Point	DP-106	45° 7.144'	-121° 54.767'
Riverside	Drop Point	DP-111	45° 9.564'	-122° 20.46'
Riverside	Drop Point	DP-110	45° 4.712'	-121° 55.27'
Riverside	Drop Point	DP-111	45° 4.208'	-121° 57.738'
Riverside	Drop Point	DP-112	45° 3.948'	-121° 54.677'
Riverside	Drop Point	DP-114	45° 3.444'	-121° 53.760'
Riverside	Drop Point	DP-115	45° 3.251'	-121° 51.711'
Riverside	Drop Point	DP-12	45° 7.38'	-122° 20.999'
Riverside	Drop Point	DP-120	45° 2.141'	-121° 51.547'
Riverside	Drop Point	DP-13	45° 10.21'	-122° 18.826'
Riverside	Drop Point	DP-15	45° 10.988'	-122° 18.839'
Riverside	Drop Point	DP-2	45° 8.932'	-122° 24.894'
Riverside	Drop Point	DP-30	45° 12.293'	-122° 21.789'
Riverside	Drop Point	DP-4	45° 9.232'	-122° 24.864'
Riverside	Drop Point	DP-55	45° 13.415'	-122° 14.616'
Riverside	Drop Point	DP-57	45° 12.765'	-122° 12.714'
Riverside	Drop Point	DP-6	45° 9.242'	-122° 27.948'
Riverside	Drop Point	DP-60	45° 12.184'	-122° 9.571'
Riverside	Drop Point	DP-61	45° 12.268'	-122° 9.104'
Riverside	Drop Point	DP-62	45° 11.098'	-122° 8.528'
Riverside	Drop Point	DP-64	45° 11.68'	-122° 8.241'
Riverside	Drop Point	DP-65	45° 12.210'	-122° 7.946'
Riverside	Drop Point	DP-66	45° 12.456'	-122° 6.394'
Riverside	Drop Point	DP-67	45° 12.603'	-122° 4.752'
Riverside	Drop Point	DP-69	45° 13.216'	-122° 1.451'
Riverside	Drop Point	DP-7	45° 7.196'	-122° 23.232'
Riverside	Drop Point	DP-71	45° 13.873'	-122° 0.625'
Riverside	Drop Point	DP-72	45° 13.603'	-121° 58.859'
Riverside	Drop Point	DP-73	45° 12.895'	-121° 58.497'
Riverside	Drop Point	DP-74	45° 12.699'	-121° 58.672'
Riverside	Drop Point	DP-75	45° 12.711'	-121° 57.438'
Riverside	Drop Point	DP-78	45° 0.194'	-122° 20.479'
Riverside	Drop Point	DP-79	45° 1.857'	-122° 21.449'
Riverside	Drop Point	DP-80	45° 2.586'	-122° 23.702'
Riverside	Drop Point	DP-81	45° 1.089'	-122° 24.845'
Riverside	Drop Point	DP-82	45° 2.603'	-122° 25.144'
Riverside	Drop Point	DP-83	45° 2.516'	-122° 26.863'
Riverside	Drop Point	DP-84	45° 4.672'	-122° 26.662'
Riverside	Drop Point	DP-86	45° 4.544'	-122° 28.373'
Riverside	Drop Point	DP-87	45° 4.872'	-122° 29.119'
Riverside	Drop Point	DP-89	45° 5.689'	-122° 27.307'
Riverside	Drop Point	DP-9	45° 4.67'	-122° 24.697'
Riverside	Drop Point	DP-90	45° 8.704'	-122° 33.806'
Riverside	Drop Point	DP-94	45° 7.565'	-122° 27.949'
Riverside	Drop Point	DP-95	45° 7.285'	-122° 27.341'
Riverside	Drop Point	DP-97	45° 6.335'	-122° 27.149'
Riverside	Drop Point	DP-98	45° 5.979'	-122° 28.851'
Riverside	Drop Point	DP-99	45° 7.769'	-122° 24.51'
Riverside	Helispot	H-40	45° 12.36'	-122° 6.624'
Riverside	Helispot	H-42	45° 12.470'	-122° 4.369'
Riverside	Helispot	H-45	45° 13.407'	-122° 0.814'
Riverside	Helispot	H-50	45° 8.079'	-122° 1.999'
Riverside	Helispot	H-52	45° 7.186'	-122° 1.077'
Riverside	Helispot	H-60	45° 4.67'	-122° 1.437'
Riverside	Helispot	H-77	45° 0.194'	-122° 20.478'
Riverside	Helispot	H-84	45° 2.974'	-122° 22.879'
Riverside	Helispot	H-85	45° 2.865'	-122° 23.31'
Riverside	Lookout	Incident Command Post Riverside ICP	44° 58.605'	-122° 58.674'
Riverside	Zone Break		45° 1.753'	-121° 52.548'
Riverside	Zone Break		45° 2.402'	-122° 29.267'