

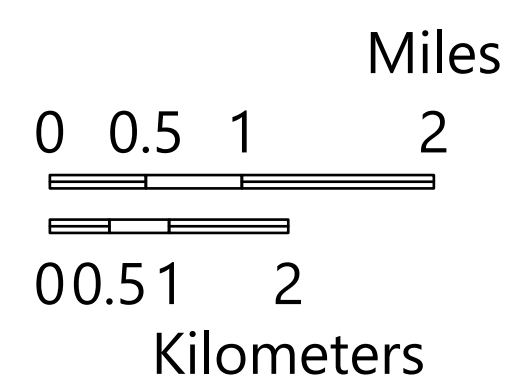
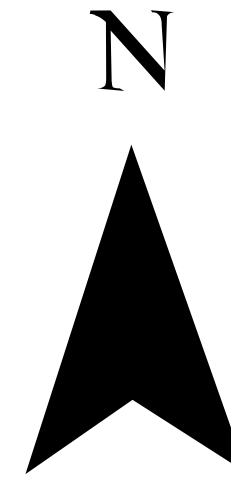
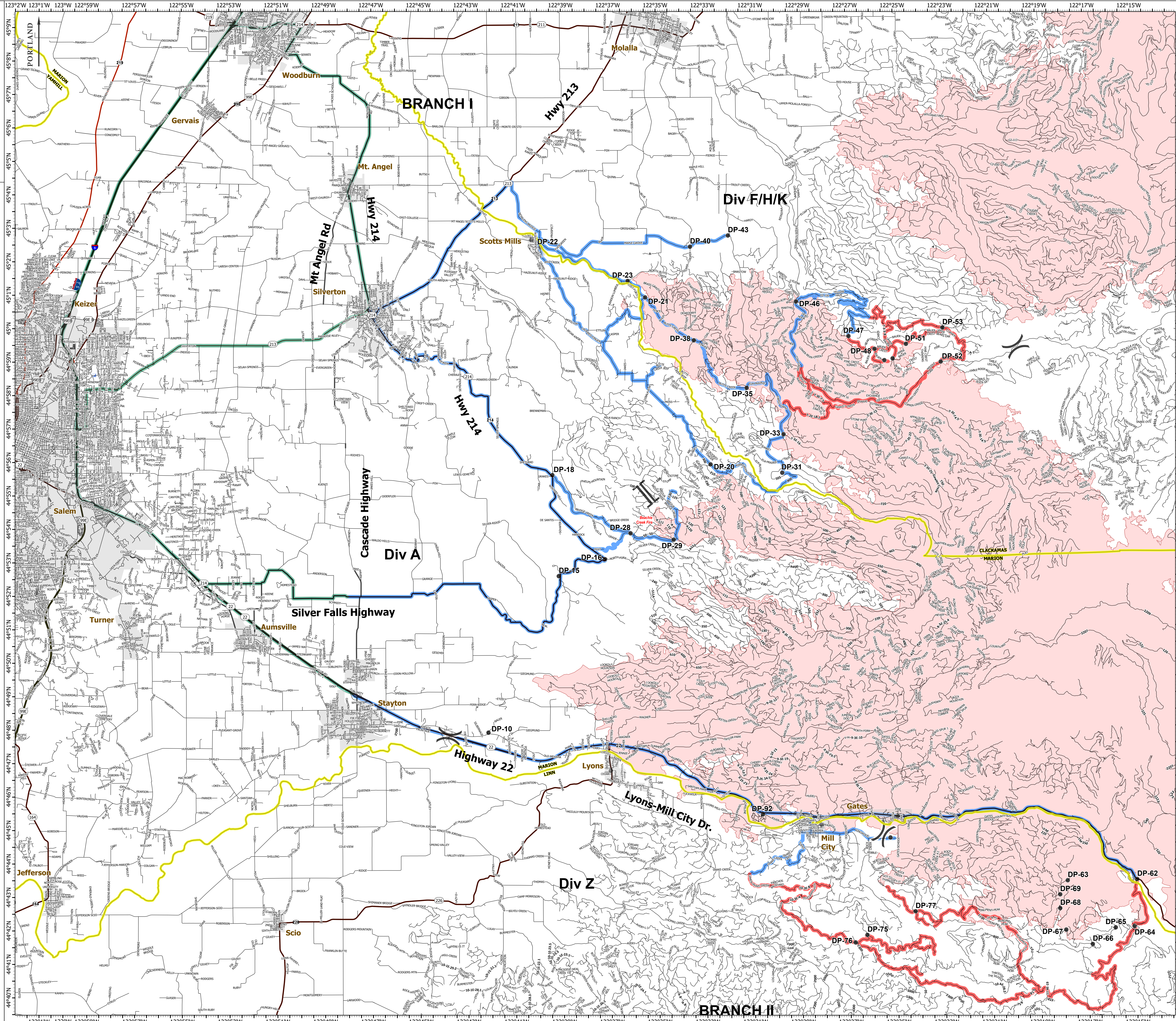
Medical Transportation

Beachie Creek
ORWIF-200299
10/03/20

192,901 acres
78,090 hectares
as of 10/01/20 @ 2204

Medical Transportation Routes

- Travel Time
 - <1 Hr
 - 1-2 Hr
 - >2 Hr
- Interstate Highway
- State Highway
- Drop Point
- Incident Command Post
- Division Break
- Branch Break
- Wildfire Daily Fire Perimeter
- County Line



1:63,360 - PNW IMT 3 - ADB - 10/2/2020 2151
North American 1983 Datum, LatLong Grid