

Suppression Repair

Beachie Creek
ORWIF-200299
Riverside
ORMHF-000859
10/03/20
Page: 1

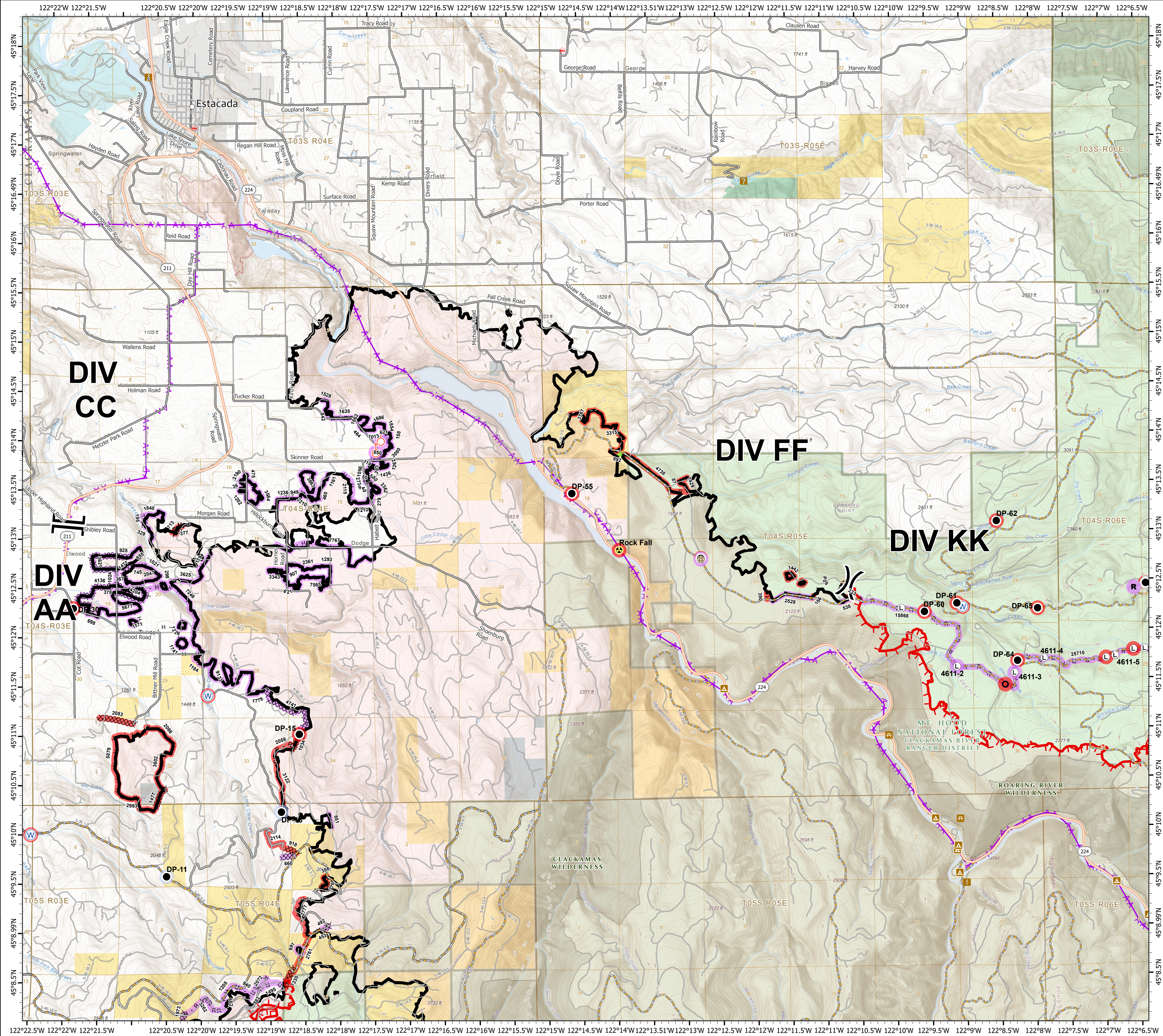
- | | | | |
|--|--|---|---|
| Repair Point Status
<ul style="list-style-type: none"> ● Repair Needed ○ No Repair Needed ○ Other - See Comments ○ Unknown | Repair Line Status
<ul style="list-style-type: none"> — Completed - Inspected — Repair Needed — Unknown | <ul style="list-style-type: none"> ● Resource Location ● Spot Fire ● Water Source ○ Division Break ○ Branch Break — Contained Line — Completed Dozer Line — Completed Hand Line — Road as Completed Line — Access or Improved Road — Line Break Completed — Aerial Hazard — Fence - Cut/Damaged — Hazard — Landing or Log Deck | <ul style="list-style-type: none"> ● Fire Station ● Campground ● Ranger Station ● Visitor/Information Center ● Trailhead ● Picnic Area ○ City, Town, or Community — County Road — Major road — Intermediate road — Minor road — Decommissioned or Closed — Rivers and Streams — Lake, Pond or Reservoir — County Boundary — City Limits — Ranger District Boundaries — Forest Service Wilderness Area — Bureau of Land Management — U.S. Forest Service — U.S. Fish and Wildlife Service — State — Local Government — Private/Unknown |
|--|--|---|---|

FC Point Type	Repair Status	Repair Comments	Label
Culvert	Repair Needed	Debris around culvert inlet - remove debris	
Drop Point	No Repair Needed	Road turnout, no repair needed. REAF BERNARDS	DP-11
Drop Point	No Repair Needed	No repairs, REAF BERNARDS	DP-13
Drop Point	Repair Needed		DP-15
Drop Point	Repair Needed		DP-30
Drop Point	Repair Needed		DP-55
Drop Point	Repair Needed		DP-57
Drop Point	Repair Needed		DP-60
Drop Point	Repair Needed		DP-61
Drop Point	Repair Needed		DP-62
Drop Point	Repair Needed		DP-64
Drop Point	Repair Needed		DP-65
Drop Point	Repair Needed		DP-66
Fence - Cut/Damaged	Unknown		
Hazard	Repair Needed		Rock Fall

FC Point Type	Repair Status	Repair Comments	Label
Landing or Log Deck			4611-4
Landing or Log Deck			4611-5
Landing or Log Deck	Repair Needed		4611-6/7
Landing or Log Deck	Repair Needed		
Landing or Log Deck	Unknown		4611-2
Landing or Log Deck	Unknown		4611-3
Resource Location	Other - See Comments	check to see if rock belongs to active timber sale	
Resource Location	Unknown		
Spot Fire	Unknown		
Spot Fire	Unknown		
Water Source	Repair Needed		
Water Source	Repair Needed		
Water Source	Repair Needed		

FC Line Type	Repair Status	Repair Comments	Length Feet
Road as Completed Line	Unknown		273
Road as Completed Line	Unknown		367
Road as Completed Line	Unknown		379
Road as Completed Line	Unknown		464
Road as Completed Line	Unknown		475
Road as Completed Line	Unknown		538
Road as Completed Line	Unknown		621
Road as Completed Line	Unknown		698
Road as Completed Line	Unknown		850
Road as Completed Line	Unknown		851
Road as Completed Line	Unknown		907
Road as Completed Line	Unknown		1024
Road as Completed Line	Unknown		1161
Road as Completed Line	Unknown		1202
Road as Completed Line	Unknown		1212
Road as Completed Line	Unknown		1236
Road as Completed Line	Unknown		1293
Road as Completed Line	Unknown		1635
Road as Completed Line	Unknown		1696
Road as Completed Line	Unknown		2528
Road as Completed Line	Unknown		15868
Road as Completed Line	Unknown		25710
Road as Completed Line	Repair Needed		2059
Road as Completed Line	Repair Needed		2993
Road as Completed Line	Repair Needed		3122
Road as Completed Line	Repair Needed		4738
Road as Completed Line	Completed - Inspected		892
Other	Unknown		158
Other	Unknown		393
Other	Unknown		842
Other	Unknown		940
Other	Unknown		1056
Other	Unknown		1262
Other	Unknown		1436
Other	Unknown		1528
Other	Unknown		1662
Other	Unknown		1854
Other	Unknown		2362
Other	Unknown		3090
Line Break Completed	Repair Needed		377
Line Break Completed	Repair Needed		713
Completed Hand Line	Unknown		36
Completed Hand Line	Unknown		55
Completed Hand Line	Unknown		119
Completed Hand Line	Unknown		298
Completed Hand Line	Unknown		329
Completed Hand Line	Unknown		329
Completed Hand Line	Unknown		460
Completed Hand Line	Unknown		745
Completed Hand Line	Unknown		855
Completed Hand Line	Unknown		949
Completed Hand Line	Unknown		1021

FC Line Type	Repair Status	Repair Comments	Length Feet
Completed Hand Line	Unknown		1171
Completed Hand Line	Unknown		1184
Completed Hand Line	Unknown		1194
Completed Hand Line	Unknown		1226
Completed Hand Line	Unknown		1241
Completed Hand Line	Unknown		1278
Completed Hand Line	Unknown		1840
Completed Hand Line	Unknown		2047
Completed Hand Line	Unknown		2115
Completed Hand Line	Unknown		2190
Completed Hand Line	Unknown		2210
Completed Hand Line	Unknown		2361
Completed Hand Line	Unknown		3343
Completed Hand Line	Unknown		3584
Completed Hand Line	Unknown		3625
Completed Hand Line	Unknown		3863
Completed Hand Line	Unknown		5677
Completed Hand Line	Unknown		7246
Completed Hand Line	Unknown		7565
Completed Hand Line	Unknown		7767
Completed Hand Line	Unknown		9133
Completed Hand Line	Repair Needed		87
Completed Hand Line	Repair Needed	Repair to prevent visibility from road and use by OHVs	156
Completed Hand Line	Repair Needed	Remove bit of hand line to prevent OHV use into forest	233
Completed Hand Line	Repair Needed	minimal waterbars needed on steep portions near bottom	358
Completed Hand Line	Repair Needed	Repair to prevent visibility from road and use by OHVs	390
Completed Hand Line	Repair Needed	No line observed here - misangle, mis (READ)	908
Completed Hand Line	Repair Needed	Most handline (other than those noted) has already been covered in slash	1429
Completed Hand Line	Repair Needed	misangle, mis (READ)	1442
Completed Hand Line	Repair Needed		2098
Completed Hand Line	Repair Needed		3315
Completed Hand Line	Repair Needed		3602
Completed Hand Line	Repair Needed		3767
Completed Hand Line	Repair Needed		5879
Completed Dozer Line	Unknown		195
Completed Dozer Line	Unknown		660
Completed Dozer Line	Unknown		925
Completed Dozer Line	Unknown		1471
Completed Dozer Line	Unknown		3621
Completed Dozer Line	Unknown		4136
Completed Dozer Line	Unknown		4204
Completed Dozer Line	Unknown		4741
Completed Dozer Line	Repair Needed	berms and waterbars pull slash	776
Completed Dozer Line	Repair Needed	pull berms and waterbars. black road at each end. salvage logs on private portion. ARCH cleared by B Saunters	918
Completed Dozer Line	Repair Needed		1034
Completed Dozer Line	Repair Needed		1477
Completed Dozer Line	Repair Needed		2083
Access or Improved Road	Unknown		279
Access or Improved Road	Unknown		580
Access or Improved Road	Unknown		621
Access or Improved Road	Unknown		1013
Access or Improved Road	Repair Needed	spread berm off shoulder to drain water from rd surface. Remove trees where dozer line meets road. confirm with landowner Port Blakeley	2114



0 0.5 1 2 Miles

1:33,000 - 10/2/2020 2:125
Acres from GIS
North American 1983 Datum, LatLong Grid

