

# Suppression Repair

Beachie Creek  
ORWIF-200299  
Riverside 2

Riverside  
ORMHF-000859  
10/03/20  
Page: 2

**Repair Point Status**

- Repair Needed
- No Repair Needed
- Other - See Comments
- Unknown

**Repair Line Status**

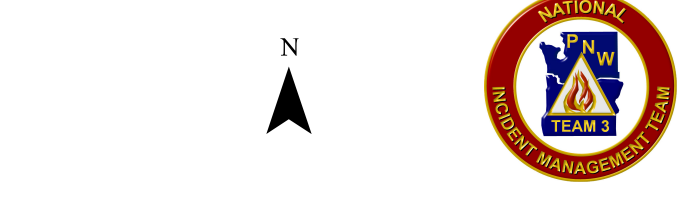
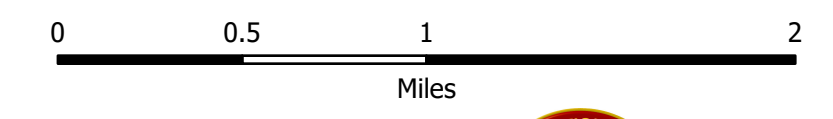
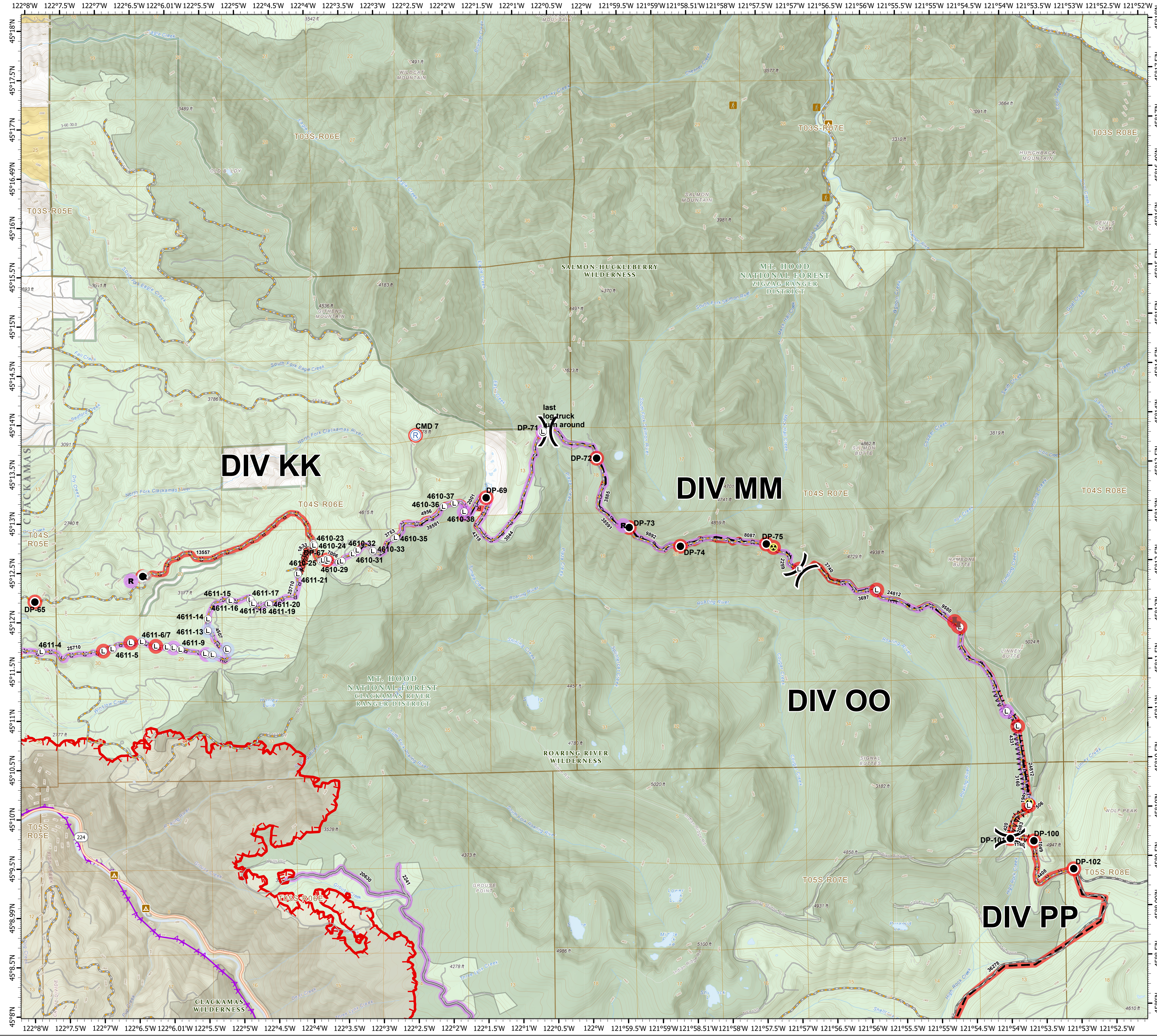
- Repair Needed
- Unknown

**Legend**

- R Resource Location
- X Division Break
- XX XX Completed Dozer Line
- R · Road as Completed Line
- Access or Improved Road
- Line Break Completed
- Planned Fire Line
- Aerial Hazard
- Uncontrolled Fire Edge
- Wildfire Daily Fire Perimeter
- Hazard
- Landing or Log Deck
- Repeater
- Major road
- Intermediate road
- Minor road
- Decommissioned or Closed
- Rivers and Streams
- Lake, Pond or Reservoir
- County Boundary
- Ranger District Boundaries
- Forest Service Wilderness Area
- Bureau of Land Management
- U.S. Forest Service
- Private/Unknown
- State Highway

FC Point Type	Repair Status	Repair Comments	Label	FC Point Type	Repair Status	Repair Comments	Label
Dozer Push	Repair Needed			Landing or Log Deck			4610-28
Dozer Push	Repair Needed			Landing or Log Deck			4610-29
Drop Point	Repair Needed		DP-101	Landing or Log Deck			4610-30
Drop Point	Repair Needed		DP-102	Landing or Log Deck			4610-31
Drop Point	Repair Needed		DP-64	Landing or Log Deck			4610-32
Drop Point	Repair Needed		DP-65	Landing or Log Deck			4610-35
Drop Point	Repair Needed		DP-66	Landing or Log Deck			4610-36
Drop Point	Repair Needed		DP-67	Landing or Log Deck			4610-37
Drop Point	Repair Needed		DP-69	Landing or Log Deck			4611-10
Drop Point	Repair Needed		DP-71	Landing or Log Deck			4611-14
Drop Point	Repair Needed		DP-72	Landing or Log Deck			4611-15
Drop Point	Repair Needed		DP-73	Landing or Log Deck			4611-16
Drop Point	Repair Needed		DP-74	Landing or Log Deck			4611-17
Drop Point	Repair Needed		DP-75	Landing or Log Deck			4611-18
Hazard	No Repair Needed	One way road, No turn around, Contact Div O before proceeding.		Landing or Log Deck			4611-19
Hazard	Repair Needed	waterbar and divert steep away from failure, cutbank retelling		Landing or Log Deck			4611-20
Landing or Log Deck				Landing or Log Deck			4611-21
Landing or Log Deck				Landing or Log Deck			4611-22
Landing or Log Deck			4610-23	Landing or Log Deck			4611-5
Landing or Log Deck			4610-24	Landing or Log Deck	No Repair Needed		4611-47
Landing or Log Deck			4610-25	Landing or Log Deck	No Repair Needed		4611-9
Landing or Log Deck			4610-27	Landing or Log Deck	No Repair Needed		4611-12

FC Line Type	Repair Status	Repair Comments	Length Feet
Road as Completed Line	Unknown		2259
Road as Completed Line	Unknown		3044
Road as Completed Line	Unknown		3697
Road as Completed Line	Unknown		9580
Road as Completed Line	Unknown		25710
Road as Completed Line	Repair Needed	Light chipping needed	420
Road as Completed Line	Repair Needed	Sweeping of debris	1049
Road as Completed Line	Repair Needed		2001
Road as Completed Line	Repair Needed	Road grading, remove berms, repair cut and fill slopes (marked separately), and chipping -Suing	3740
Road as Completed Line	Repair Needed	excavator work, too narrow for grader on outcropped road, remove slash from road, road has little surfacing and very bony	3753
Road as Completed Line	Repair Needed		3885
Road as Completed Line	Repair Needed		4218
Road as Completed Line	Repair Needed	Sweeping of debris and light chipping need at intersection of DP 102	4408
Road as Completed Line	Repair Needed	Bladed and water bars	4507
Road as Completed Line	Repair Needed	Needs grading of berm caused by dozer. Masticated edge needs follow up hand cutting (stems were cut too long)	4956
Road as Completed Line	Repair Needed	repair notes in comments	7006
Road as Completed Line	Repair Needed	The road needs drainage.	9892
Road as Completed Line	Repair Needed	Begin grading to remove berm on roadside from tracked equipment, begin slash removal from drainage features, barricade light grading, road prism needs brushed, ditches pulled and graded to remove ruts, and have proper drainage. Will require spot rock, starts at 150 spot, this segment has worst rutting	13557
Planned Fire Line	Unknown		8087
Planned Fire Line	Unknown		38591
Planned Fire Line	Repair Needed	Road grading, remove berms, repair cut and fill slopes (marked separately), and chipping -Suing	24812
Planned Fire Line	Repair Needed	Chipping needed throughout NF 58 and entry to NF 5830 and NF 150. Crews needed to sweep debris.	36278
Line Break Completed	Unknown		3160
Line Break Completed	Unknown		4331
Line Break Completed	Repair Needed	Light chipping and sweeping needed	1140
Line Break Completed	Repair Needed	Logs in ditch need to be removed. Chop smaller material. Berms need to be knocked down. Rocky debris behind shoulder needs additional repair	2083
Completed Dozer Line	Repair Needed	Pull in berms, may not be needed until log deck is removed	194
Completed Dozer Line	Repair Needed		506
Completed Dozer Line	Repair Needed	Dozer line needs significant repair. Follow decom with slash and water bars.	1833
Access or Improved Road	Unknown		2241
Access or Improved Road	Unknown		20630



1:33,000 - - 10/2/2020 2125  
Acres from GIS  
North American 1983 Datum, LatLong Grid

